



FBR-1161

**ADSL2+ Modem Router
1W 1LAN 1USB**

Quick Installation Guide

English

Português

Deutsch

繁體中文

Français

Español

Nederlands

Danish

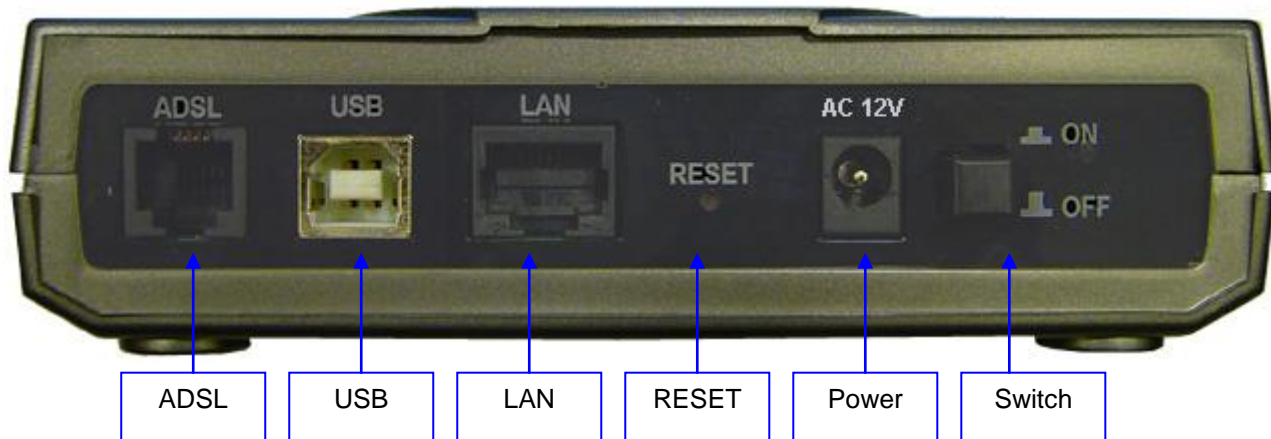
Italiano

Front Panel



LED		Meaning
1	PPP :	Lit steady when there is a PPPoA / PPPoE connection.
2	ADSL:	Š ã c Á , @ ^ } Á • ˇ & & ^ • • ~ ˇ ^ Á & [} } ^ & c ^ á
3	USB:	Lit when the USB port is connected to the PC and working properly
4	LAN Port :	Lit when connected to an Ethernet device. Green for 100Mbps; Orange for 10Mbps. Blinking when data is Transmitted / Received.
5	SYS :	Lit when the system is ready.
6	PWR :	Lit when power is ON.

Rear Ports

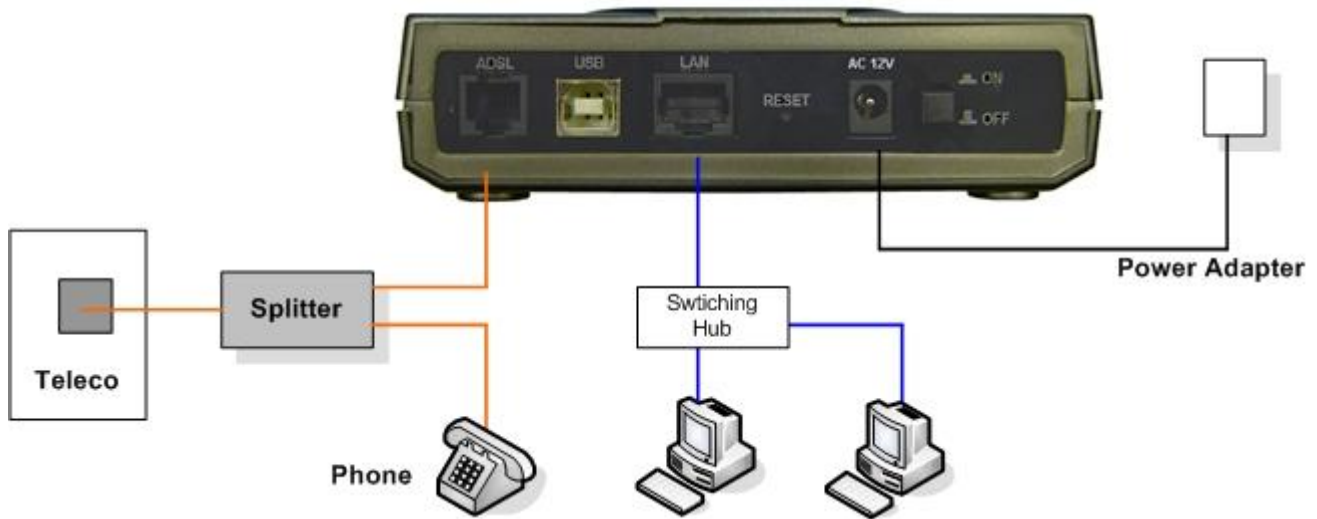


Port		Meaning
1	Power Switch	Power ON/OFF switch
2	POWER	Connect the supplied power adapter to this jack.
3	RESET	After the device is powered on, press it to reset the device or restore to factory default settings. 0-3 seconds: reset the device 6 seconds above: restore to factory default settings (this is used when you can not login to the router, e.g. forgot the password)
4	LAN	Connect a UTP Ethernet cable (Cat-5 or Cat-5e) to the LAN ports when connecting to a PC or an office/home network of 10Mbps or 100Mbps.
5	USB	Connect the supplied USB cable to this port when connecting to the PC
6	ADSL	Connect the supplied RJ-F F Á Ç %oC ^ ^] @[} ^ + D Á & a connecting to the ADSL/telephone network.

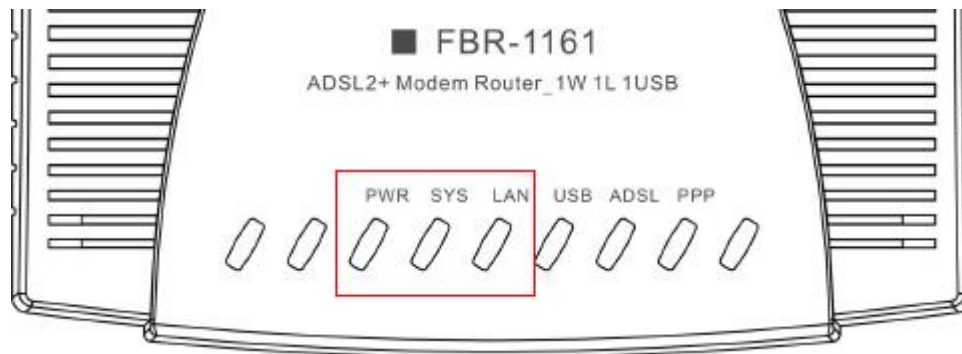
Connecting Your ADSL2+ Modem/Router

Through Ethernet Port

1. Connect the Router to a **LAN** (Local Area Network) and the ADSL/telephone (**LINE**) network and Power on the device.

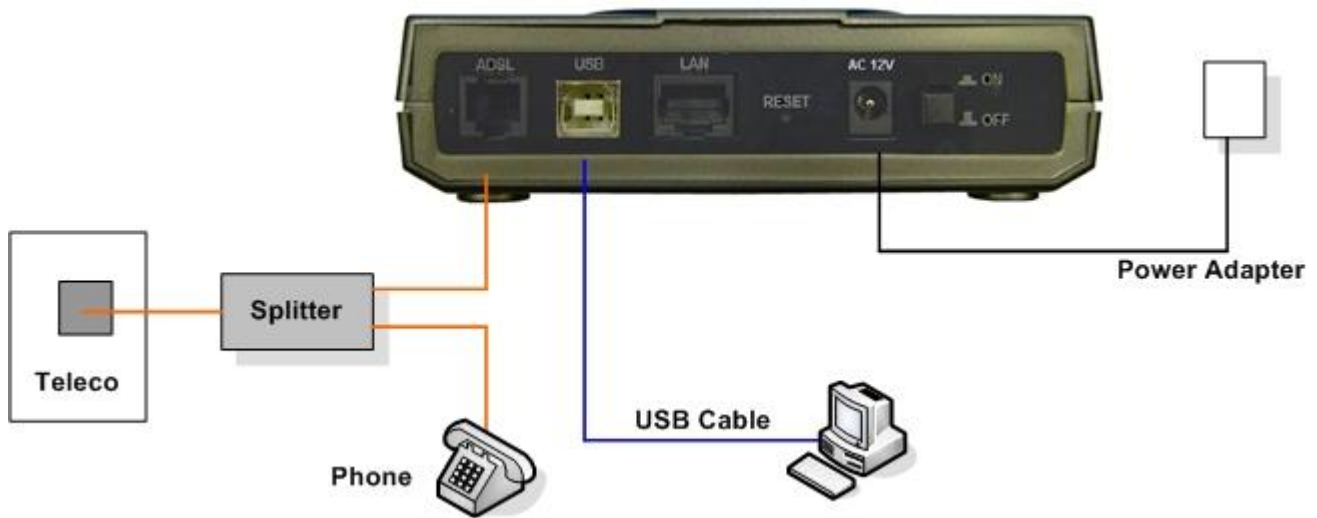


2. Make sure the **PWR** and **SYS** LEDs are lit steadily and that the **relevant LAN** LED is lit.

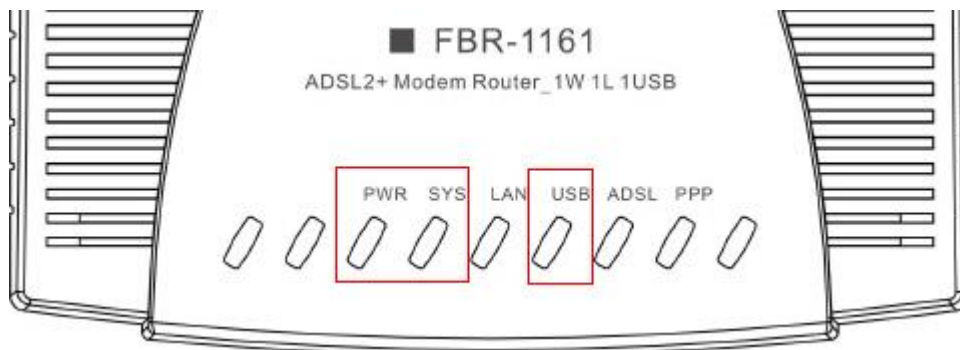


Through USB Port

1. Connect the Router to a **USB** port and the ADSL/telephone (**LINE**) network and Power on the device.



2. Make sure the **PWR** and **SYS** LEDs are lit steadily and that the **relevant USB** LED is lit.



Package Contents

- D FBR-1161 ADSL2+ Modem Router
- D Quick Installation Guide
- D CD-ROM with Manual / Driver
- D AC-AC Power Adapter (12VAC, 1A)
- D RJ-11 ADSL/telephone Cable
- D Cat.5 Ethernet Cable
- D USB Cable

Note

For more detailed instructions on configuring and using the ADSL2+ Modem Router, please refer to the User Manual

Warning

- ⓘ ***Do not use the FBR-1161 in high humidity or high temperatures.***
- ⓘ ***Do not use the same power source for the FBR-1161 as other equipment.***
- ⓘ ***Do not open or repair the case yourself. If the FBR-1161 is too hot, turn off the power immediately and have it repaired at a qualified service center.***
- ⓘ ***Avoid using this product and all accessories outdoors.***

Attention

- ⓘ ***Place the FBR-1161 on a stable surface.***
- ⓘ ***Only use the power adapter that comes with the package. Using a different voltage rating power adaptor may damage the router.***

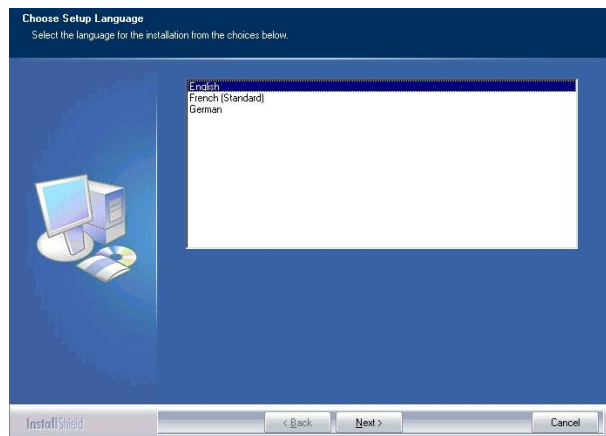
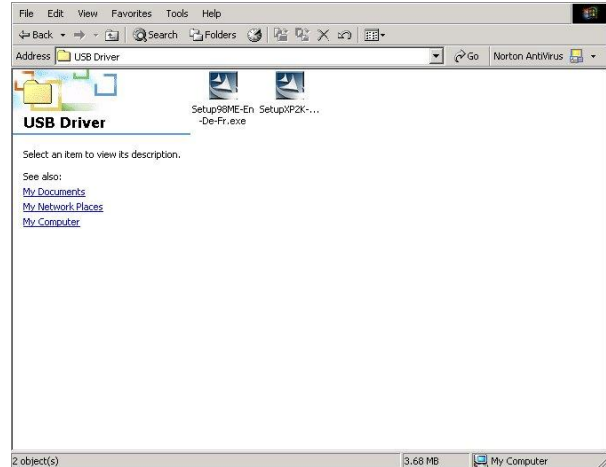
Installing the USB Driver on a PC

If you connect the device through USB port instead of Ethernet port, for the first time the USB cable is connected to the PC, Windows will automatically detect the device. Follow the steps to install the USB driver.

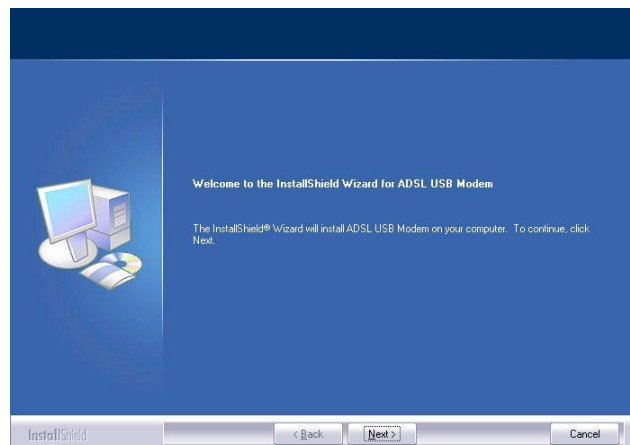
For Windows XP & 2000

1. Start Windows. Then insert the installation CD into the CD-ROM drive. In next window, to

can choose: English. German and French)

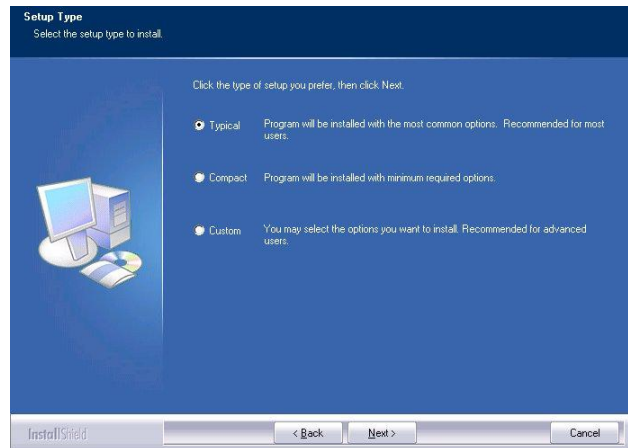


3. Then follow screen

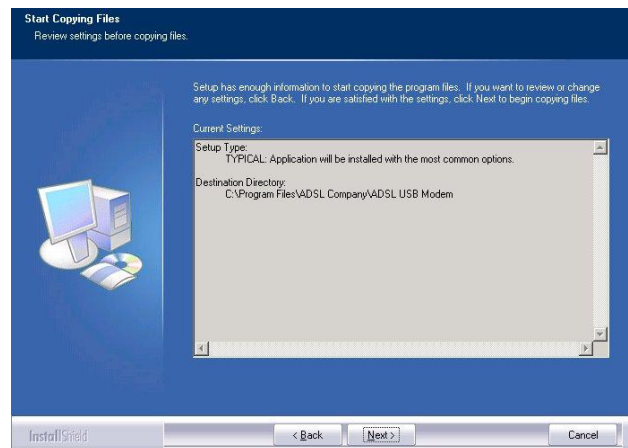


English

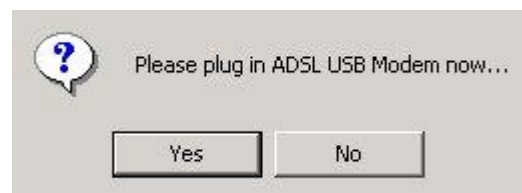
4. To click the type of setup you prefer, then click Next >



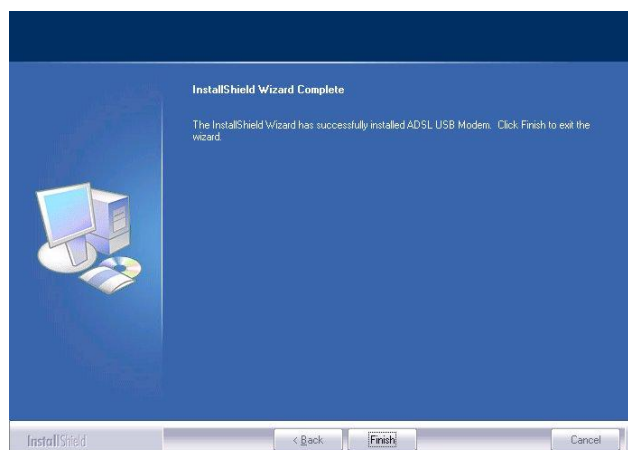
5. Setup has enough information to copying the program files, then click Next >



6. Please plug USB cable into ADSL USB Mode



7. Then, c| ã & \ Á %ø ã } ã • @+



8. The windows will show the screen and
] | ^ æ• ^ Á ^ } c ^ ! Á %W• ^ ! } æ{
 configure the status report on web page

Default setting:
 User Name: **admin**
 Password: **admin**

Please type your user name and password.

Site: 192.168.1.254
 Realm: ADSL Modem/Router
 User Name:
 Password:
 Save this password in your password list
 OK Cancel

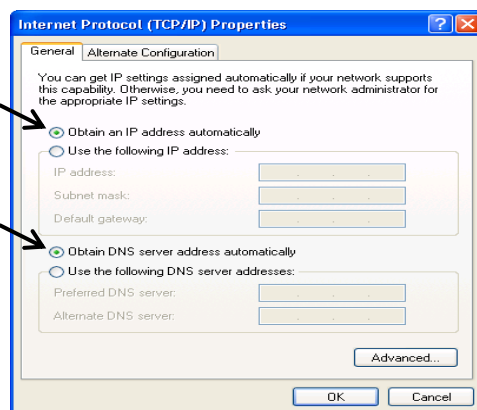
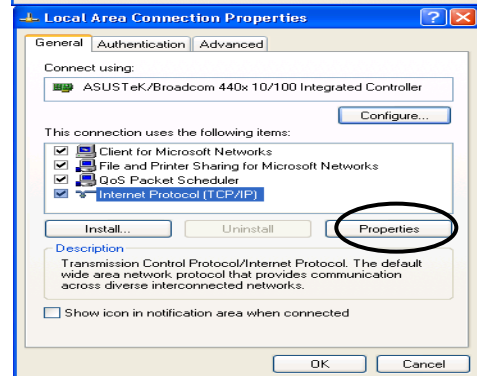
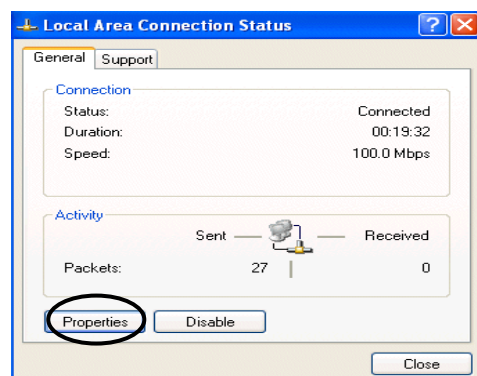
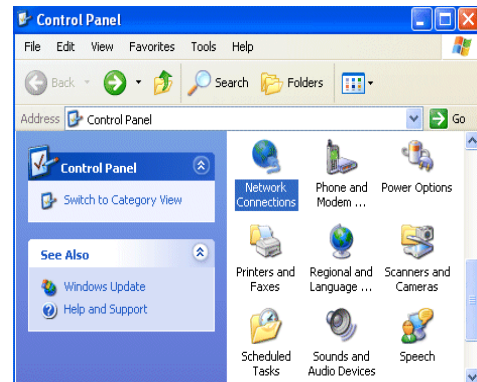
The Main Page

Status	Quick Start	Interface Setup	Advanced Setup	Access Management	Maintenance	Status	Help
Device Info		System Log		Statistics			
Device Information	Firmware Version : 2.7.0.26(UE0.C2C)3.5.10.5 MAC Address : 00:04:ed:ff:f5:16						
LAN	IP Address : 192.168.1.254 Subnet Mask : 255.255.255.0 DHCP Server : Enabled						
WAN	Virtual Circuit : PVC0 Status : Not Connected Connection Type : PPPoE IP Address : 0.0.0.0 Subnet Mask : 0.0.0.0 Default Gateway : 0.0.0.0 DNS Server : 0.0.0.0						
ADSL	ADSL Firmware Ver : FwVer:3.5.10.5_A_TC3085 HwVer:T14.F7_1.0 Line State : Down Modulation : Multi-Mode Annex Mode : ANNEX_A						
		Downstream	Upstream				
	SNR Margin :	N/A	N/A	db			
	Line Attenuation :	N/A	N/A	db			
	Data Rate :	0	0	kbps			

Configuring the Network Properties

Configuring PC in Windows XP

1. Go to **Start / Control Panel (in Classic View)**. In the Control Panel, double-click on **Network Connections**
2. Double-click **Local Area Connection**.
3. In the **Local Area Connection Status** window, click **Properties**.
4. Select **Internet Protocol (TCP/IP)** and click **Properties**.
5. Select the **Obtain an IP address automatically** and the **Obtain DNS server address automatically** radio buttons.
6. Click **OK** to finish the configuration.

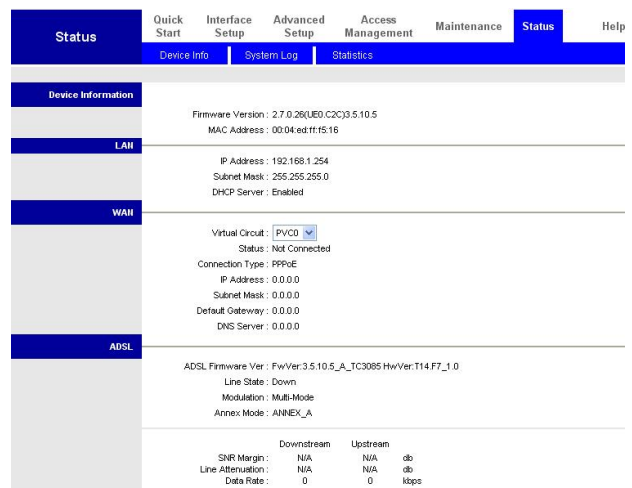


Configuring Your ADSL2+ Modem/Router

Note

To configure this device, you must have IE 5.0 / Netscape 4.5 or above installed

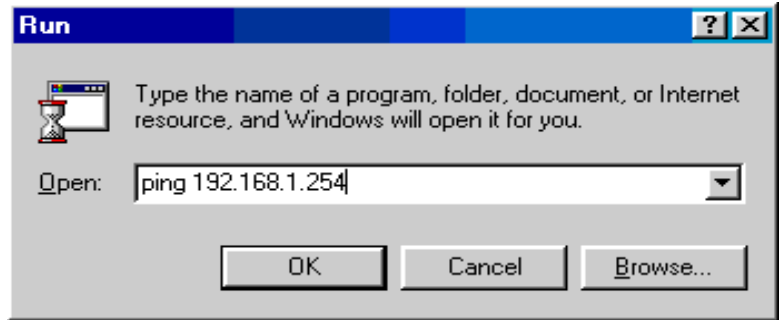
1. Open the web browser and type <http://192.168.1.254> in the address box. This number is the default IP address for this router. Press **Enter**.
2. A username and password window will appear. **The default username and password are admin and admin.** Press **OK** to proceed.
3. You will get a status report on web page.



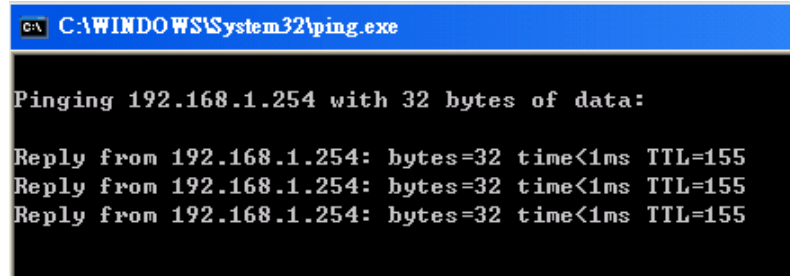
English

Verifying Your Local Network Connection with the Device

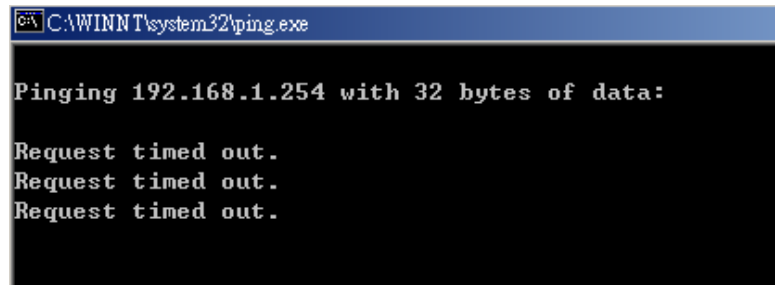
To see if this ADSL Router is visible on the local network, go to **Start / Run**. In the Run dialog box, type `ping 192.168.1.254`, then press **OK**.



A command prompt window will pop out. If your ping is successful which means your local network is able to reach to the device, then the command prompt window will close up automatically.



Connection fails, when you see `Request timed out.` in the command prompt window. You may need to check your set up.



Lieferumfang

- D FBR-1161 ADSL2+ Modem/Router
- D Kurz-Installationsanleitung
- D CD-ROM mit Anleitung und Treiber
- D Netzteil (12 VAC, 1 A)
- D RJ-11-Kabel (ADSL/Telefon)
- D Ethernet-Kabel, Cat. 5
- D USB-Kabel

Hinweis

Detalliertere Hinweise zur Konfiguration und zum Einsatz des ADSL2+-Modems/Routers finden Sie in der Bedienungsanleitung.

Warnung

- ⚠ ***Verwenden Sie das Gerät nicht an feuchten oder heißen Orten.***
- ⚠ ***Schließen Sie das Gerät an eine eigene Stromquelle an.***
- ⚠ ***Öffnen Sie nicht das Gehäuse, versuchen Sie nicht, das Gerät selbst zu reparieren. Falls sich das Gerät überhitzen sollte, schalten Sie sofort den Strom ab und lassen das Gerät in einem qualifizierten Servicecenter reparieren.***
- ⚠ ***Setzen Sie das Produkt und sämtliche Zubehörteile nicht im Freien ein.***

Achtung

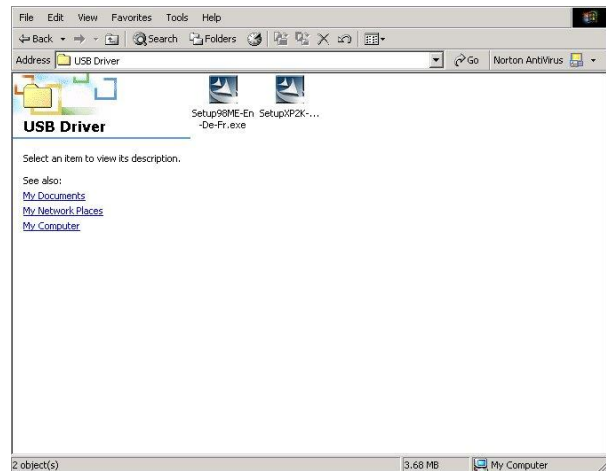
- ⚠ ***Stellen Sie das Produkt auf einem stabilen Untergrund auf.***
- ⚠ ***Verwenden Sie ausschließlich das mitgelieferte Netzteil. Bei Verwendung eines Netzteils mit abweichenden Ausgangswerten kann der Router beschädigt werden.***

USB-Treiber am PC installieren

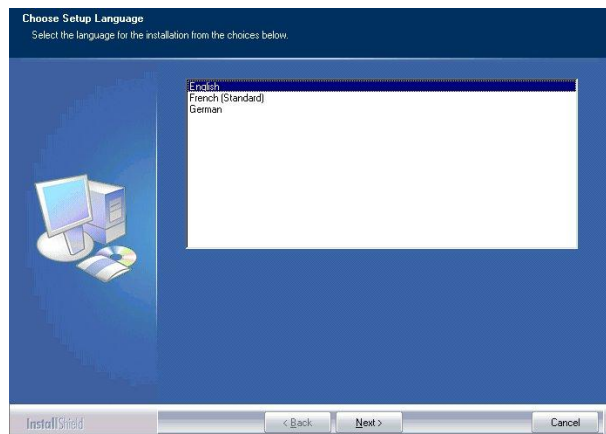
Falls Sie das Gerät statt über Ethernet über den USB-Port anschließen möchten, wird das Gerät beim ersten Anschluss an den PC automatisch von Windows erkannt. Mit den folgenden Schritten installieren Sie den USB-Treiber.

Unter Windows XP und 2000:

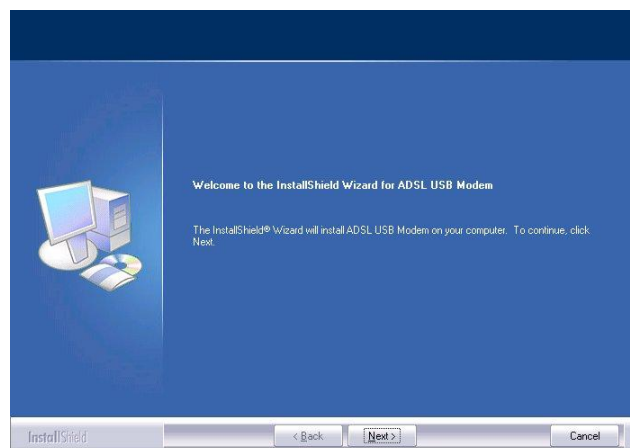
1. Starten Sie Windows. Legen Sie dann die Installations-CD in das CD-ROM-Laufwerk ein. Im nächsten Fenster wählen Sie den Ordner aus, in dem sich der Treiber befindet; **USB Driver** die Installation fortgesetzt.



2. Wählen Sie nun die Installations Sprache. Klicken Sie zwischen drei Sprachen auswählen: Deutsch, Französisch und Englisch.)



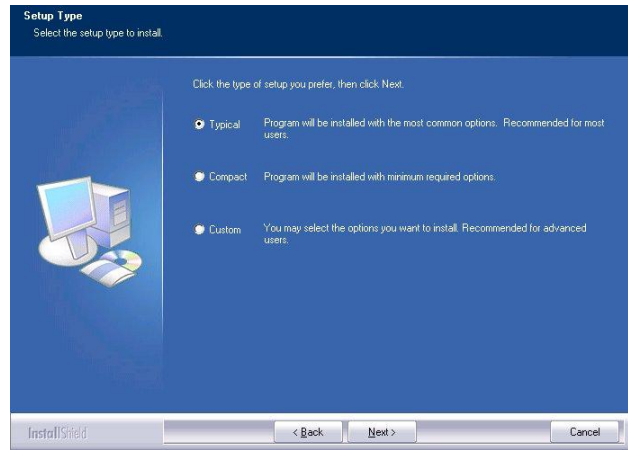
3. Der folgende Bildschirm wird angezeigt.



Deutsch

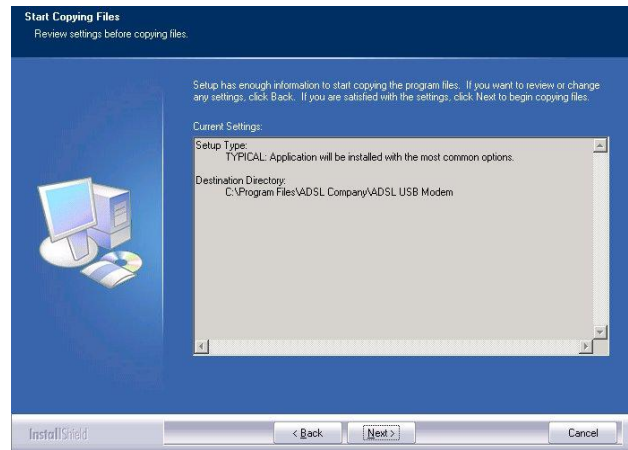
4. Wählen Sie den gewünschten

Q} • c æ | | æ c ã [] • c ^] Ê Á \ | ã
Ç Y ^ ã c ^ ! D N % Ë

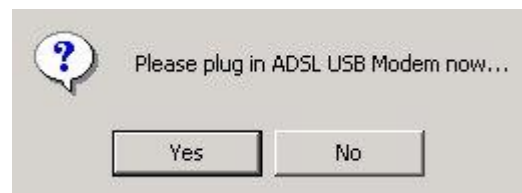


5. Zum Kopieren der Treiberdateien klicken

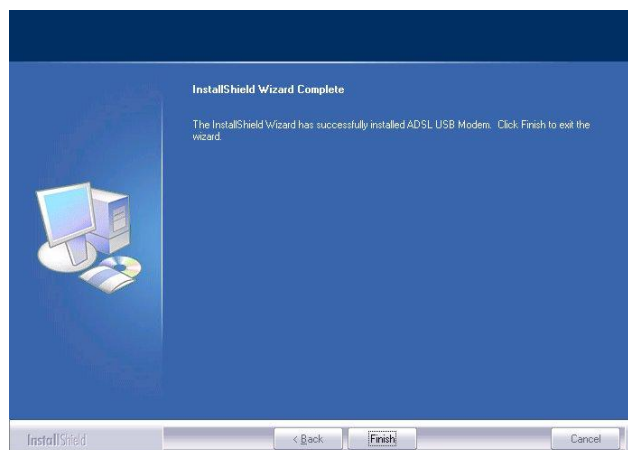
Ù ã ^ Á } [& @ Á ^ ã } { æ | Á æ ~ Á s



6. Bitte schließen Sie nun das USB-Kabel an das ADSL-Modem an.



7. S | ã & \ ^ } Á Ù ã ^ Á : ~ { Á Æ à •
Ç Ø ^ ! c ã * • c ^ | | ^ } D % Ë



8. Der folgende Bildschirm wird angezeigt.
 Übersichtseite.

Please type your user name and password.

Site: 192.168.1.254

Realm: ADSL Modem/Router

User Name:

Password:

Save this password in your password list

OK Cancel

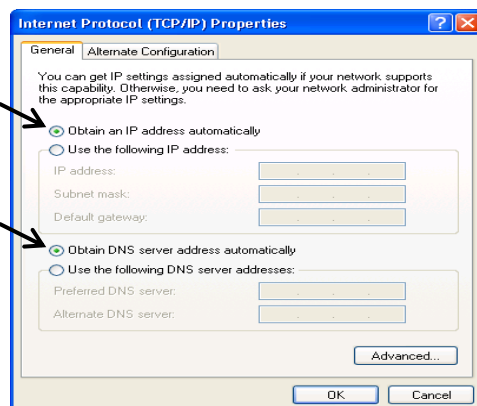
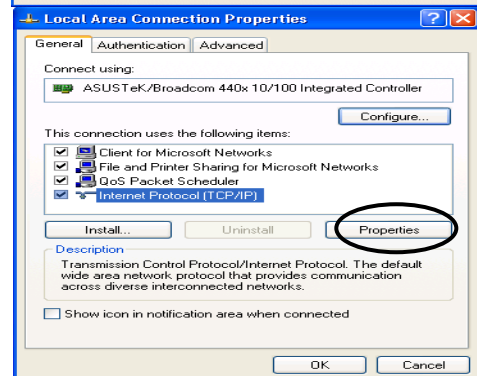
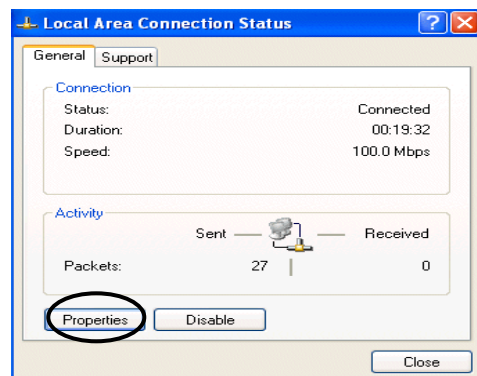
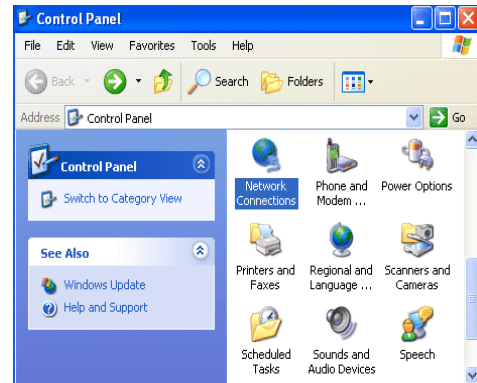
Die Hauptseite

Status	Quick Start	Interface Setup	Advanced Setup	Access Management	Maintenance	Status	Help
	Device Info	System Log	Statistics				
Device Information	Firmware Version : 2.7.0.26(UE0.C2C)3.5.10.5 MAC Address : 00:04:ed:ff:f5:16						
LAN	IP Address : 192.168.1.254 Subnet Mask : 255.255.255.0 DHCP Server : Enabled						
WAN	Virtual Circuit : PYC0 Status : Not Connected Connection Type : PPPoE IP Address : 0.0.0.0 Subnet Mask : 0.0.0.0 Default Gateway : 0.0.0.0 DNS Server : 0.0.0.0						
ADSL	ADSL Firmware Ver : FwVer:3.5.10.5_A_TC3085 HwVer:T14.F7_1.0 Line State : Down Modulation : Multi-Mode Annex Mode : ANNEX_A						
			Downstream	Upstream			
	SNR Margin :	N/A	N/A	db			
	Line Attenuation :	N/A	N/A	db			
	Data Rate :	0	0	kbps			

Netzwerkeinstellungen konfigurieren

PC unter Windows XP konfigurieren

1. Rufen Sie (in der klassischen Ansicht) **Start / Control Panel (Start / Einstellungen / Systemsteuerung)** auf. In der Systemsteuerung doppelklicken Sie auf **Network Connections (Netzwerkverbindungen)**.
2. Doppelklicken Sie auf **Local Area Connection (LAN oder Hochgeschwindigkeitsinternet)**.
3. Im Fenster **Local Area Connection Status (Status von LAN-Verbindung)** klicken Sie auf **Properties (Eigenschaften)**.
4. Wählen Sie **Internet Protocol (Internetprotokoll) (TCP/IP)** aus und klicken Sie auf **Properties (Eigenschaften)**.
5. Wählen Sie **Obtain an IP address automaticall (IP-Adresse automatisch beziehen)** und **Obtain DNS server address automatically (DNS-Serveradresse automatisch beziehen)**.
6. Klicken Sie zum Abschluss der Konfiguration auf **OK**.



So konfigurieren Sie Ihr ADSL2+-Modem/Router

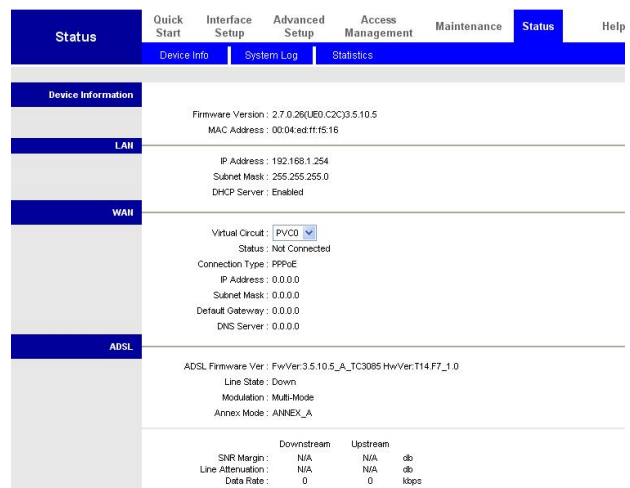
Hinweis

Zur Konfiguration des Gerätes muss Internet Explorer 5.0/Netscape 4.5 oder eine jeweils aktuellere Version installiert sein.

1. Öffnen Sie den Webbrowser und geben Sie <http://192.168.1.254> in das Adresse-Feld des Browsers ein. Diese Adresse ist die Standard-IP-Adresse des Routers. Drücken Sie **Enter**.
2. Ein Fenster zur Eingabe von Benutzernamen und Kennwort wird eingeblendet. **Standard-Benutzername und Standard-Kennwort lauten** **admin** und **admin**. Klicken Sie zum Fortfahren auf **OK**.

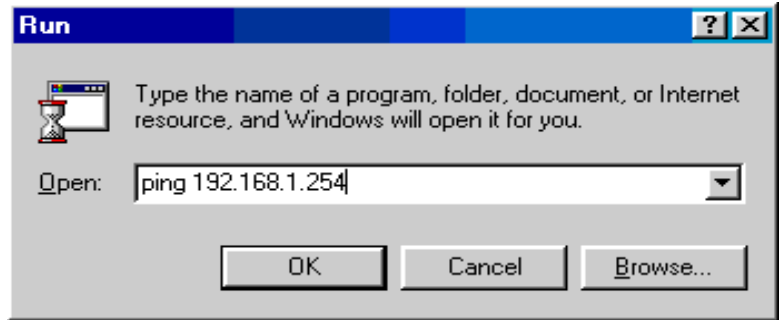


3. Ein Statusbericht wird in Form einer Webseite angezeigt.

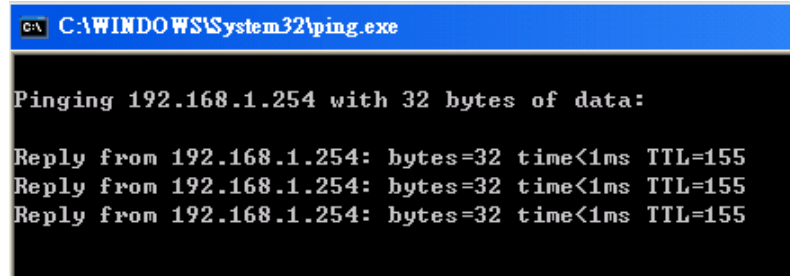


Lokale Netzwerkverbindung mit dem Gerät überprüfen

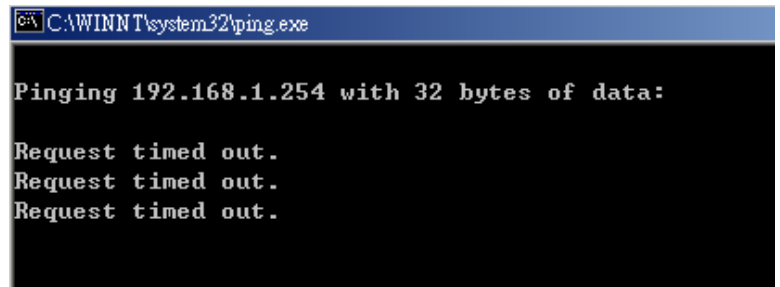
Um zu überprüfen, ob Ihr ADSL-Router im Netzwerk angesprochen werden kann, klicken Sie auf **Start / Run (Start/Ausführen)**. Im Ausführen-Dialogfenster geben Sie **ping 192.168.1.254** ein und klicken dann auf **OK**.



Ein Befehlsfenster
Ç s Ö-ØÜ } • c ^ | %oD Á 4 ~
Sofern der Ping erfolgreich war, kann das Gerät im lokalen Netzwerk erreicht werden. Das Befehlsfenster schließt sich nach kurzer Zeit von selbst.



Bei einem Verbindungsfehler wird **Request timed out (Zeitüberschreitung der Anforderung)** angezeigt. In diesem Falle sollten Sie Ihre Einstellungen noch einmal überprüfen.



7 c b h Y b i m

- D Modem routeur FBR-1161 ADSL2+
- D CD-ROM avec manuel / pilote
- D Câble RJ-11 ADSL/ téléphone
- D Câble Ethernet Cat.5
- D Câble USB

Note

Pour des instructions plus détaillées sur l'installation, consultez le manuel de l'utilisateur.

Avertissement

- Si la température est élevée, ne touchez pas le produit.
- Ne placez pas le produit sur une surface instable.
- Ne touchez pas les composants internes du produit.
- Évitez d'utiliser ce produit et ses accessoires en extérieur.

Attention

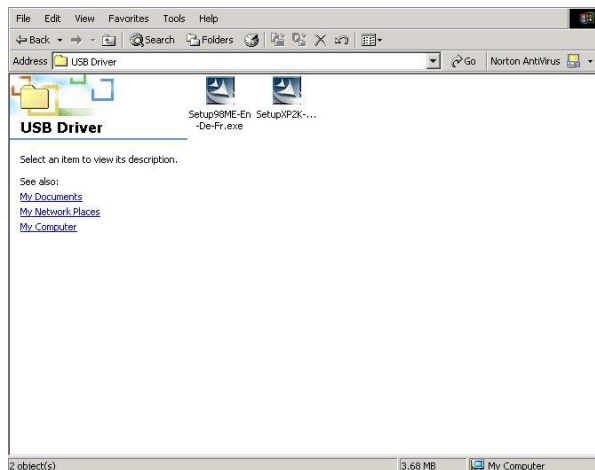
- Placez le FBR-1161 sur une surface stable.
- Ne touchez pas les composants internes du produit.

Installer le pilote USB sur un PC

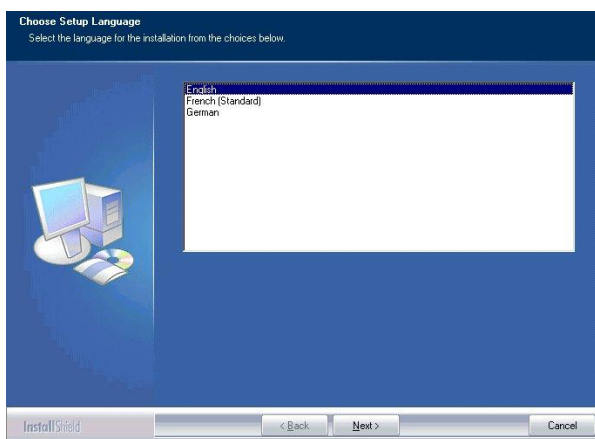
Une fois que le câble USB est relié au PC, Windows détecte automatiquement le nouveau périphérique. Suivez les étapes pour installer le pilote USB.

Pour Windows XP & 2000

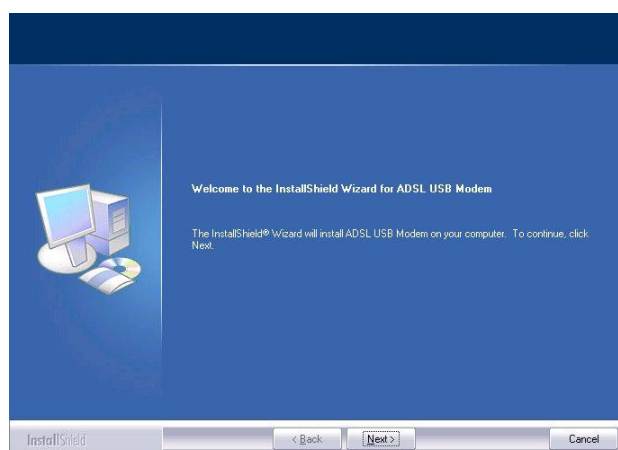
1. Démarrez Windows. Puis insérez le CD-ROM. Dans la fenêtre suivante, spécifiez le pilote USB.



2. Choisissez la langue de l'installation (Anglais, Allemand et Français).

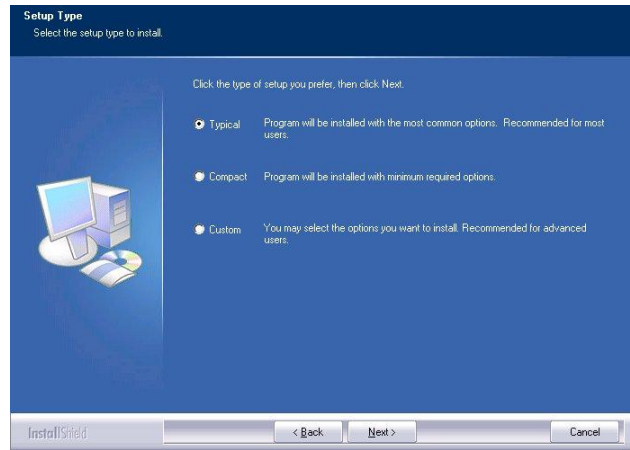


3. Bienvenue dans l'assistant d'installation du pilote USB.

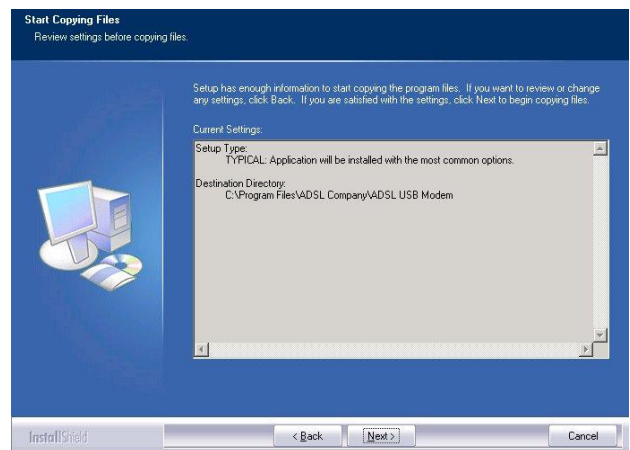


Français

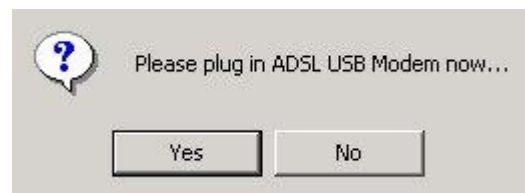
4. Cliquez sur Next (Suivant) >



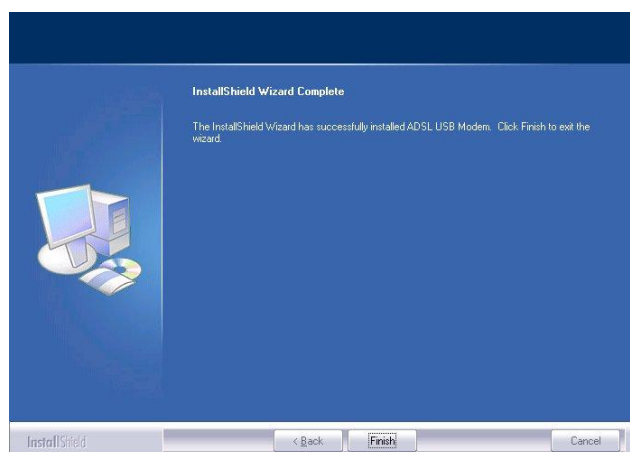
5. Cliquez sur Suivant >



6. Veuillez brancher le câble USB sur le mode ADSL USB



7. Cliquez sur Finish



8. La fenêtre af~ ã & @^ Á | q ...& i æ} /
 %oW• ^ i } æ{ ^ Á Ç Þ [{ Á á q ~ c ã |
 %oÚ æ• • , [i á Á Ç T [c Á á ^ Á] æ•
 i æ]] [i c Á á q ...c æc Á á ^ Á | æÁ

Please type your user name and password.

Site: 192.168.1.254

Realm: ADSL Modem/Router

User Name:

Password:

Save this password in your password list

OK Cancel

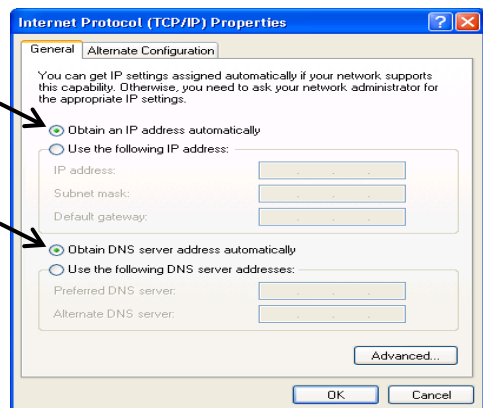
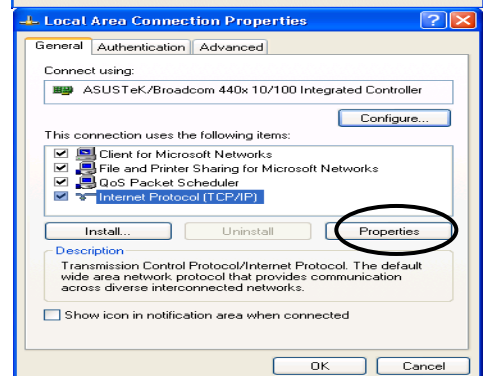
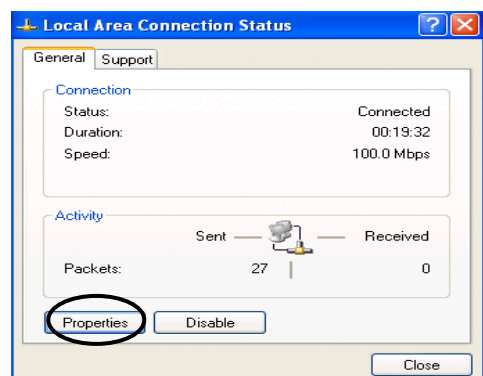
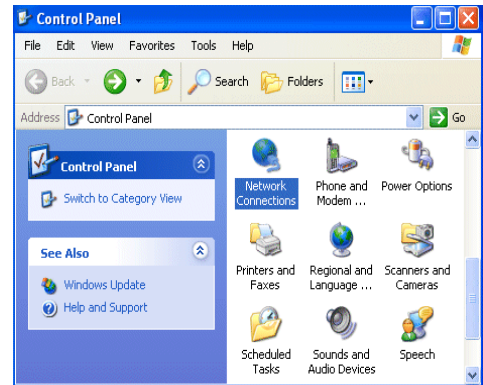
Page principale

Status	Quick Start	Interface Setup	Advanced Setup	Access Management	Maintenance	Status	Help
	Device Info	System Log	Statistics				
Device Information	Firmware Version : 2.7.0.26(UE0.C2C)3.5.10.5 MAC Address : 00:04:ed:ff:ff:16						
LAN	IP Address : 192.168.1.254 Subnet Mask : 255.255.255.0 DHCP Server : Enabled						
WAN	Virtual Circuit : PYC0 Status : Not Connected Connection Type : PPPoE IP Address : 0.0.0.0 Subnet Mask : 0.0.0.0 Default Gateway : 0.0.0.0 DNS Server : 0.0.0.0						
ADSL	ADSL Firmware Ver : FwVer:3.5.10.5_A_TC3085 HwVer:T14.F7_1.0 Line State : Down Modulation : Multi-Mode Annex Mode : ANNEX_A						
		Downstream	Upstream				
	SNR Margin :	N/A	N/A	db			
	Line Attenuation :	N/A	N/A	db			
	Data Rate :	0	0	kbps			

Configurer les propriétés réseau

Configurer le PC sous Windows XP

1. Allez dans **Start / Control Panel (Démarrer / Panneau de configuration) (en vue Classique)**. Dans le pannesau de configuration, double cliquez sur **Connexions réseau**
2. Double cliquez sur **Local Area Connection (Connexion au réseau local)**.
3. **Local Area ... a Connection Status (Connexion au réseau local)**, cliquez sur **Propriétés (Propriétés)**.
4. Sélectionnez **Internet Protocol (Protocole Internet) (TCP/IP)** et cliquez sur **Propriétés (Propriétés)**.
5. Sélectionnez les boutons radio **Obtain an IP address automatically (Obtenir une adresse IP automatiquement)** et **Obtain DNS server address automatically (Obtenir une adresse serveur DNS automatiquement)**.
6. Cliquez sur **OK** pour terminer la configuration.



Configuration de votre modem/routeur ADSL2+

Note

Pour configurer cet appareil, vous devez avoir installé IE 5.0 / Netscape 4.5 ou supérieur

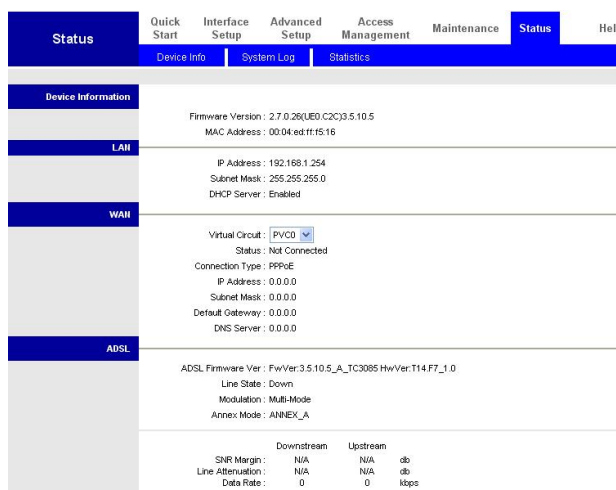
- Ouvrez le navigateur Web et tapez <http://192.168.1.254> dans sa barre de navigation. Appuyez sur **Enter (Entrée)**.



- Un message de demande de mot de passe apparaît. Les identifiants par défaut sont **admin** et **admin**. Appuyez sur **OK** pour continuer.



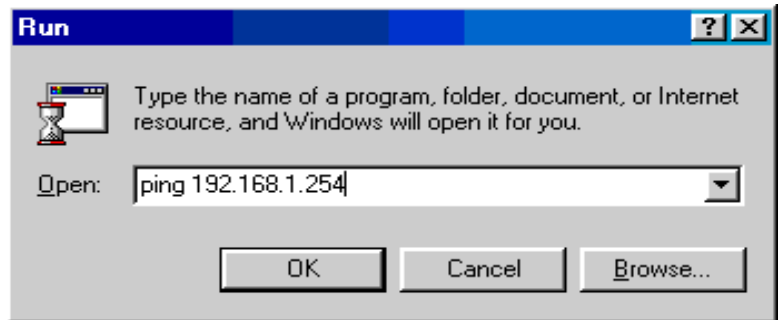
- Une page Web s'affiche. Appuyez sur **OK** pour continuer.



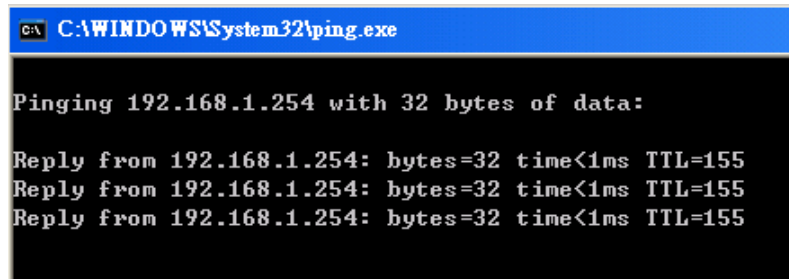
Français

Vérifier si le routeur ADSL est visible sur le réseau local, allez dans **Start/Run (Démarrer / Exécuter)**. Dans la boîte de dialogue, saisissez l'adresse IP du routeur (par exemple, 192.168.1.254) et appuyez sur **OK**.

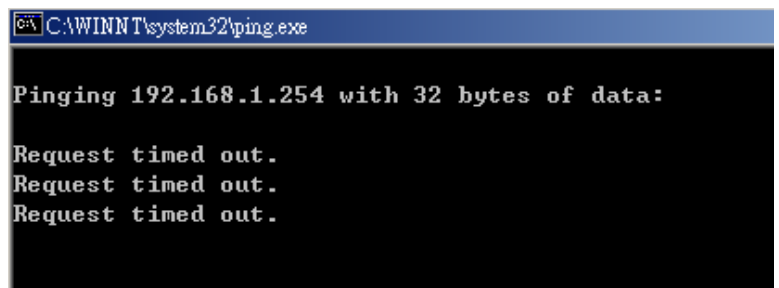
Pour voir si le routeur ADSL est visible sur le réseau local, allez dans **Start/Run (Démarrer / Exécuter)**. Dans la boîte de dialogue, saisissez l'adresse IP du routeur (par exemple, 192.168.1.254) et appuyez sur **OK**.



Une commande apparaît. Si le ping aboutit, ce qui signifie que votre réseau local est capable de communiquer avec le routeur. La commande se ferme automatiquement.



Lorsque la connexion échoue, une erreur est affichée. Le délai d'attente de la demande dépasse la limite. Vous devez vérifier à nouveau votre installation.



Contenidos de la caja

- D Módem enrutador ADSL2+ FBR-1161
- D Guía de instalación rápida
- D CD-Rom con Manual / Controladores
- D Adaptador de alimentación AC-AC (12VAC, 1A)
- D Cable RJ-11 ADSL / teléfono
- D Cable Ethernet Cat. 5
- D Cable USB

Nota

Para más información sobre la configuración y el uso del Módem Enrutador ADSL2+, consulte el Manual del usuario

Advertencia

- ***No utilice el equipo FBR-1161 en entornos de alta humedad o altas temperaturas.***
- ***No utilice la misma fuente de alimentación del FBR-1161 también para otro equipo.***
- ***No abra ni repare la carcasa usted mismo. Si el equipo FBR-1161 se calienta demasiado, desactive la alimentación inmediatamente y solicite su reparación a un centro de servicio cualificado.***
- ***Evite utilizar este producto y todos sus accesorios en exteriores.***

Atención

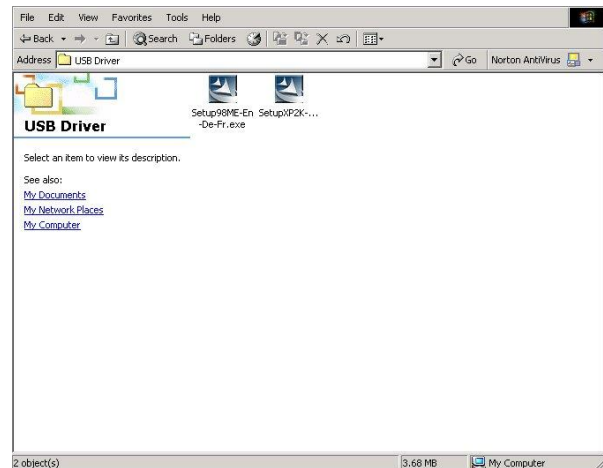
- ***Coloque el equipo FBR-1161 sobre una superficie estable.***
- ***Utilice únicamente el adaptador de alimentación que incluye la caja. Si utiliza un adaptador de alimentación de otro voltaje podrá dañar el enrutador.***

Instalación del controlador USB en un PC

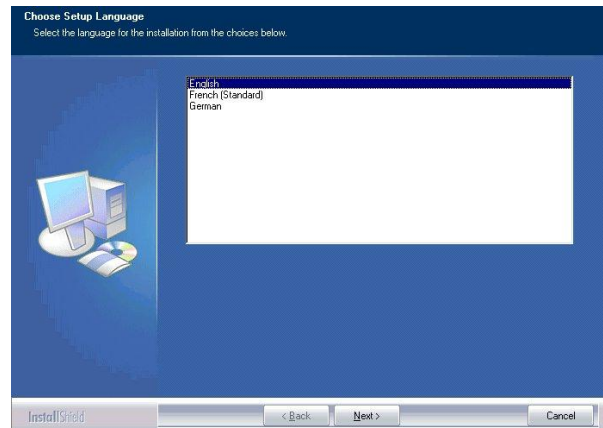
Si conecta el dispositivo a través de un puerto USB en lugar de un puerto Ethernet, la primera vez que conecte el cable USB a su PC, Windows detectará automáticamente el dispositivo. Siga los pasos siguientes para instalar el controlador USB.

Para Windows XP y 2000:

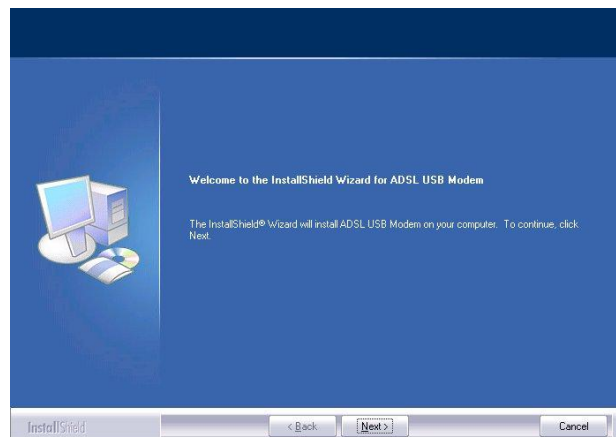
1. Inicie Windows. Inserte el CD de instalación en la unidad de CD-ROM. En la pantalla siguiente, especifique el directorio del & [} c ! [| æ å [! Ê Å USB! Á ^ b ^ { Driver • ^ c ~] Ý Ú G S ' Ö } ' Ö ^ ' Ø å



2. Seleccione el idioma de instalación y @æ* æÁ & | ã & Á ^ } Á %oP ^ ç c Á N + elegir entre tres idiomas diferentes: inglés, alemán y francés)

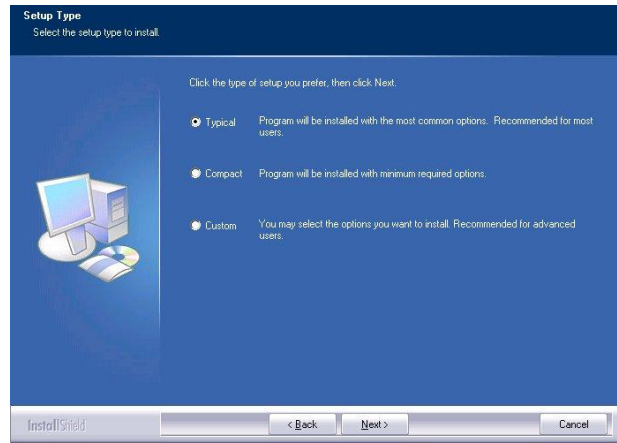


3. Aparecerá entonces la siguiente pantalla.

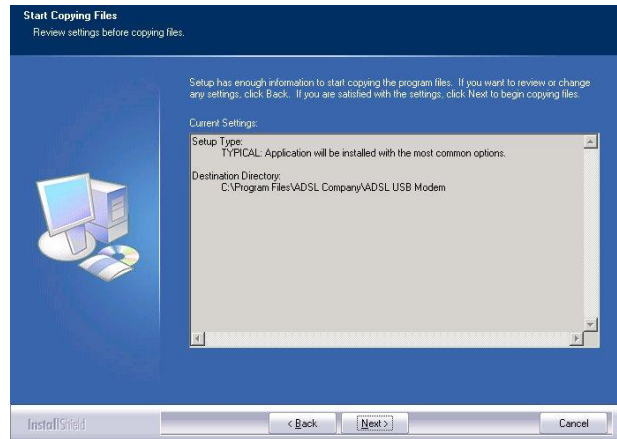


Español

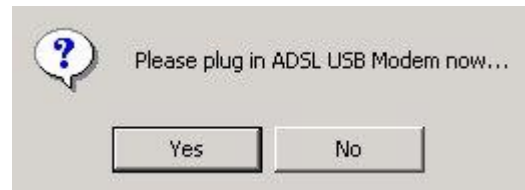
4. Haga clic en el tipo de instalación que
] ; ^ ~ ã ^ ; æÁ ^ Á á ^ •] ~ ...• Á] ~
(Siguiente)".



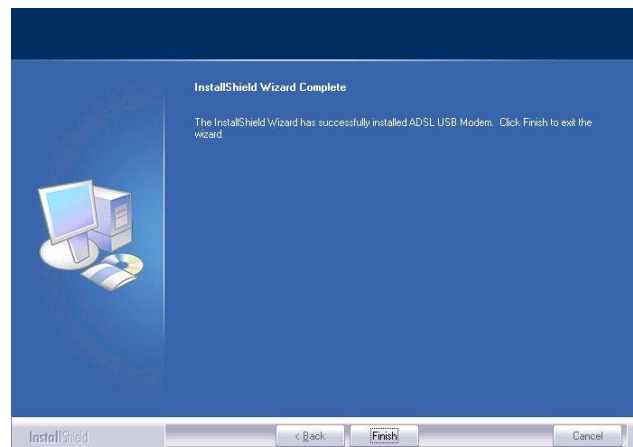
5. El asistente de instalación ya tiene datos
suficientes para comenzar a copiar los
archivos de programa. Haga clic en Next >
(Siguiente) para continuar,.



6. Conecte el cable USB en el Modo USB
ADSL.



7. Ø ã } æ | { ^ } c ^ Ê Á @æ* æÁ & |
Ç Ø ã } æ | ã : æ ! D + Ê



8. Windows mostrará la ventana y le pedirá configurar el informe de estado de la página web

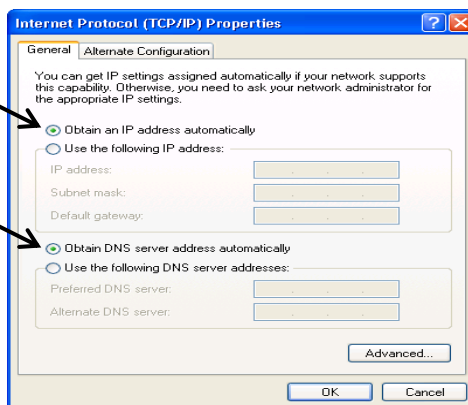
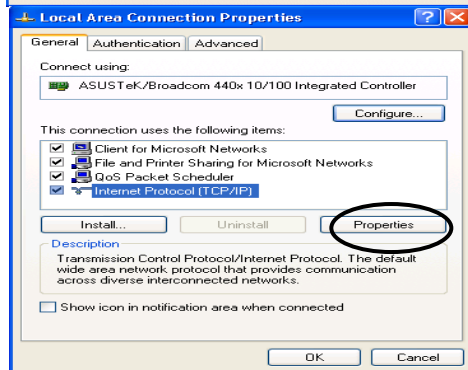
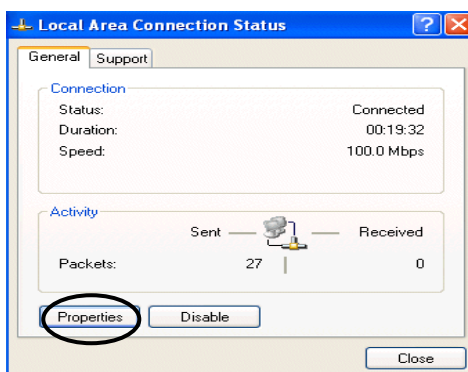
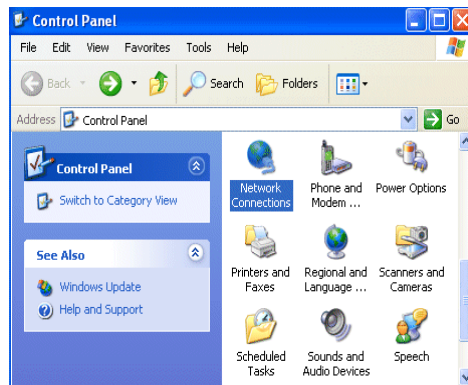
La página principal

Status	Quick Start	Interface Setup	Advanced Setup	Access Management	Maintenance	Status	Help
	Device Info	System Log	Statistics				
Device Information	Firmware Version : 2.7.0.26(UE0.C2C)3.5.10.5 MAC Address : 00:04:ed:ff:f5:16						
LAN	IP Address : 192.168.1.254 Subnet Mask : 255.255.255.0 DHCP Server : Enabled						
WAN	Virtual Circuit : PVC0 Status : Not Connected Connection Type : PPPoE IP Address : 0.0.0.0 Subnet Mask : 0.0.0.0 Default Gateway : 0.0.0.0 DNS Server : 0.0.0.0						
ADSL	ADSL Firmware Ver : FwVer:3.5.10.5_A_TC3085 HwVer:T14.F7_1.0 Line State : Down Modulation : Multi-Mode Annex Mode : ANNEX_A						
		Downstream	Upstream				
	SNR Margin :	N/A	N/A	db			
	Line Attenuation :	N/A	N/A	db			
	Data Rate :	0	0	kbps			

Configuración de las propiedades de red

Configuración de PC en Windows XP

1. Diríjase a **Start/Control Panel (Inicio / Panel de control) (en la Vista Clásica)**. Una vez en el Panel de control, haga doble clic en **Network Connection (Conexiones de red)**.
2. Haga doble clic en **Local Area Connection (Conexión de área local)**.
3. En la ventana **Local Area Connection Status (Estado de conexión de área local)**, haga clic en **Properties (Propiedades)**.
4. Seleccione **Internet Protocol (Protocolo Internet) (TCP/IP)** y haga clic en **Properties (Propiedades)**.
5. Seleccione las opciones **Obtain an IP address automatically (Obtener una dirección IP automáticamente)** y **Obtain DNS server address automatically (Obtener una dirección de servidor DNS automáticamente)**.
6. Haga clic en **OK (Aceptar)** para finalizar la configuración.



Configurar su Módem/Enrutador ADSL2+

Nota

Para configurar este dispositivo, deberá tener instalado IE 5.0 / Netscape 4.5 o posterior.

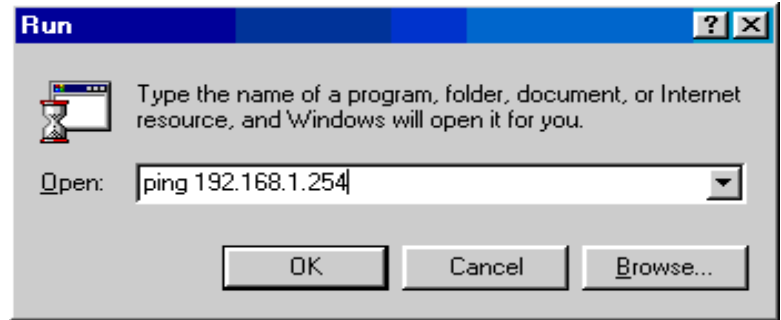
1. Abra su navegador web y escriba <http://192.168.1.254> en el cuadro de dirección del navegador. Este es el número de la dirección IP predeterminada del enrutador. Presione **Enter (Entre)**.
2. Aparecerá una ventana que le pedirá un nombre de usuario y una contraseña. **El nombre de usuario y contraseña predeterminados son admin y admin.** Pulse **OK (Aceptar)** para continuar.
3. Obtendrá un informe de estado presentado en una página web.



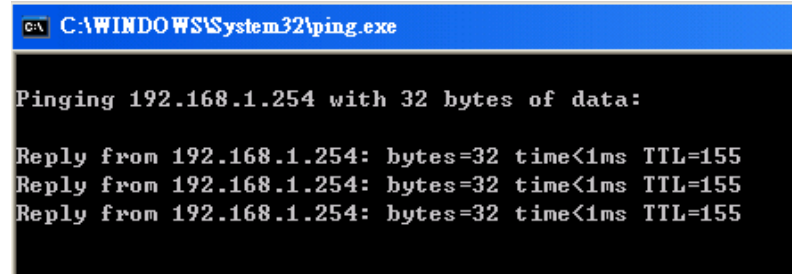
Status	Quick Start	Interface Setup	Advanced Setup	Access Management	Maintenance	Status	Help
	Device Info	System Log	Statistics				
Device Information	Firmware Version : 2.7.0.26(UE0 C2C)3.5.10.5 MAC Address : 00:04:ed:ff:15:16						
LAN	IP Address : 192.168.1.254 Subnet Mask : 255.255.255.0 DHCP Server : Enabled						
WAN	Virtual Circuit : PVC0 Status : Not Connected Connection Type : PPPoE P Address : 0.0.0.0 Subnet Mask : 0.0.0.0 Default Gateway : 0.0.0.0 DNS Server : 0.0.0.0						
ADSL	ADSL Firmware Ver : FwVer:3.5.10.5_A_TC3085 HwVer:T14.F7_1.0 Line State : Down Modulation : Multi-Mode Annex Mode : ANNEK_A						
		Downstream	Upstream				
	SNR Margin :	N/A	N/A	db			
	Line Attenuation :	N/A	N/A	db			
	Data Rate :	0	0	Kbps			

Verificar su conexión de red local con el dispositivo

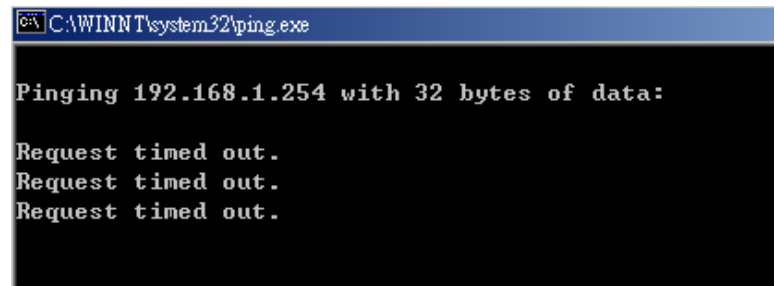
Para ver si este Enrutador ADSL es visible en su red local, diríjase a **Start / Run (Inicio / Ejecutar)**. En el cuadro de diálogo **Run (Ejecutar)**, escriba `cmd` y pulse **OK (Aceptar)**.
En el cuadro de diálogo **Run (Ejecutar)**, escriba `ping 192.168.1.254` y pulse **OK (Aceptar)**.



Aparecerá una ventana de línea de comando. Si su ping tiene éxito, ello significará que su red local puede acceder al dispositivo y después la ventana de línea de comando se cerrará automáticamente.



Si la conexión falla, verá el mensaje `Request timed out.` (Tiempo de espera de solicitud agotado) en la ventana de línea de comando. Puede que necesite comprobar su configuración.



Inhoud van de verpakking

- D FBR-1161 ADSL2+ modemrouter
- D Snelle installatiegids
- D Cd-rom met handleiding en stuurprogramma
- D Netvoedingsapparaat (12V~, 1A)
- D RJ-11 ADSL/telefoonkabel
- D Cat.5 Ethernetkabel
- D Usb-kabel

Opmerking

Meer gedetailleerde instructies voor de configuratie en het gebruik van de ADSL2+ modemrouter vindt u in de handleiding

Waarschuwing

- ⚠ ***Gebruik de FBR-1161 niet bij hoge vochtigheid of hoge temperaturen.***
- ⚠ ***Gebruik niet dezelfde voedingsbron voor de FBR-1161 en andere apparatuur.***
- ⚠ ***Open of repareer de behuizing niet zelf. Wordt de FBR-1161 te heet, schakel hem dan direct uit en laat hem repareren op een bevoegd reparatiecentrum.***
- ⚠ ***Gebruik het product en zijn toebehoren liever niet buitenshuis.***

Let op

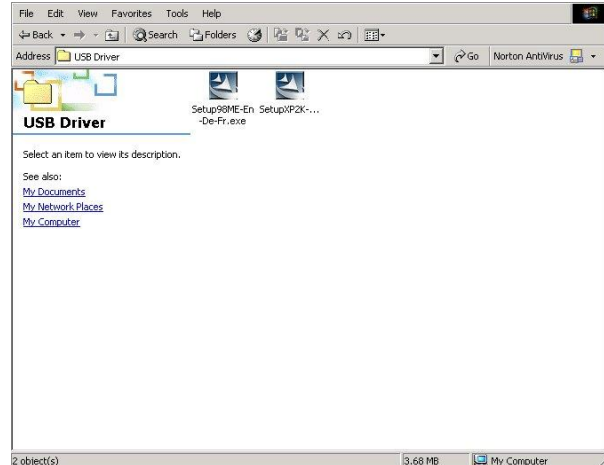
- ⚠ ***Zet de FBR-1161 op een stabiele ondergrond.***
- ⚠ ***Gebruik alleen het meegeleverde netvoedingsapparaat. Het gebruik van een netvoedingsapparaat dat een andere spanning afgeeft, kan de router beschadigen.***

Een USB-stuurprogramma op de computer installeren

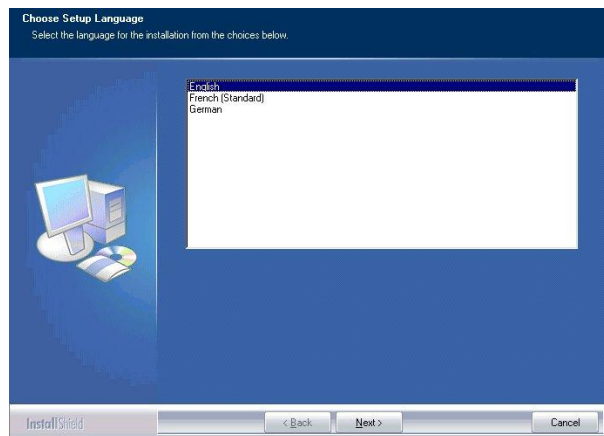
Sluit u het apparaat aan met USB in plaats van Ethernet, dan zal, als het apparaat voor de eerste keer wordt aangesloten, Windows het apparaat automatisch detecteren. Ga als volgt te werk om het USB-stuurprogramma te installeren.

Voor Windows XP & 2000

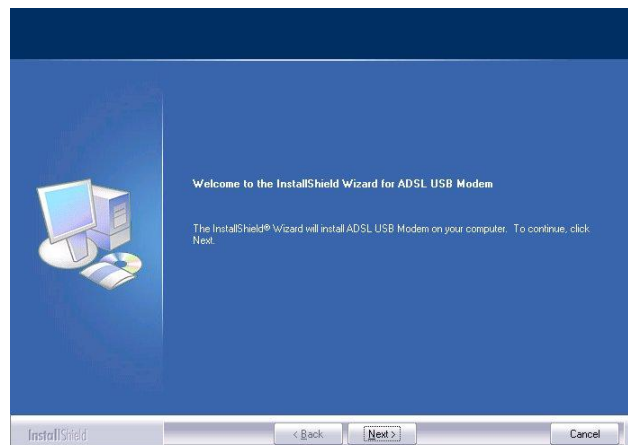
1. Start Windows. Leg de installatie-cd in de cd-lezer. Ga in het volgende venster naar de map met het stuurprogramma, bijvoorbeeld %USB Driver\^ c ^] Y U G S ' Ö } ' Ö verder te gaan



2. S ã ^ • Á å ^ Á ã } • c æ | | æ c ã ^ Ç X [| * ^ } å ^ D Å N + È Á Ç W Á \ ~ } talen: Engels, Duits en Frans)

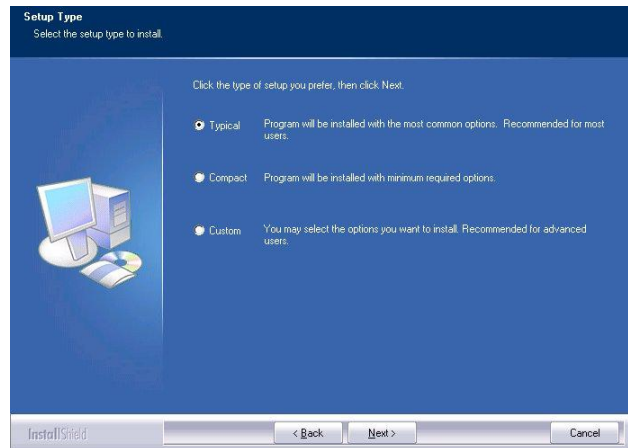


3. Volg de aanwijzingen op het scherm

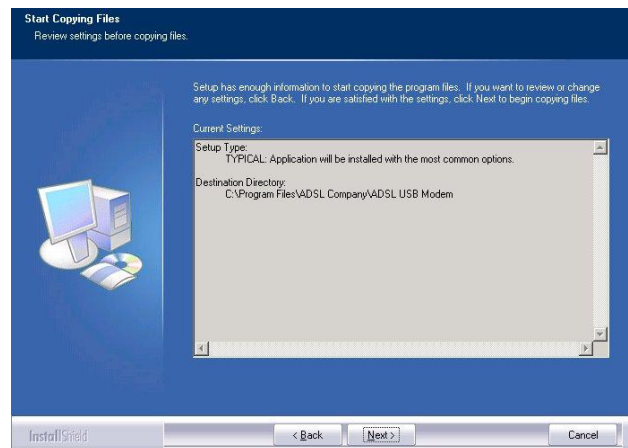


Nederlands

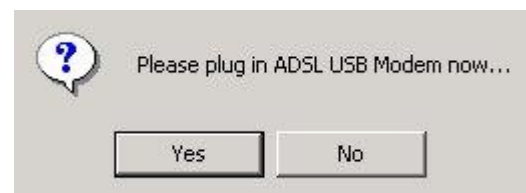
4. Klik op de gewenste instellingswijze en klik op Next (Volgende) >



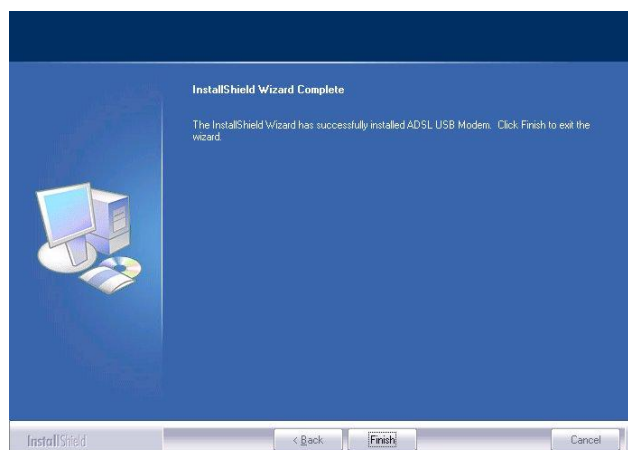
5. Stel de informatie in om het programma te kopiëren en klik op **Next (Volgende)** >



6. Sluit de USB-kabel aan op de ADSL USB-modem



7. S | ã \ Á [] Á %ø ã } ã • @Á Ç X [



8. Het getoonde venster verschijnt. Geef de statusverslag op de webpagina te configureren

Please type your user name and password.

Site: 192.168.1.254

Realm: ADSL Modem/Router

User Name:

Password:

Save this password in your password list

OK Cancel

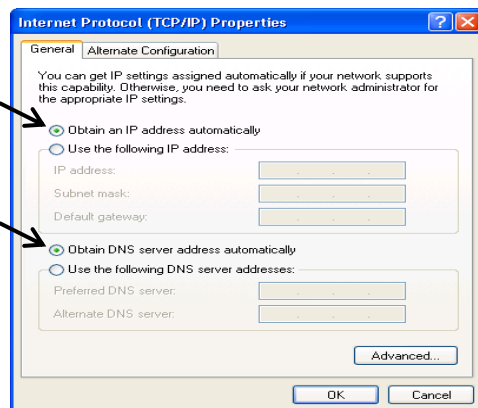
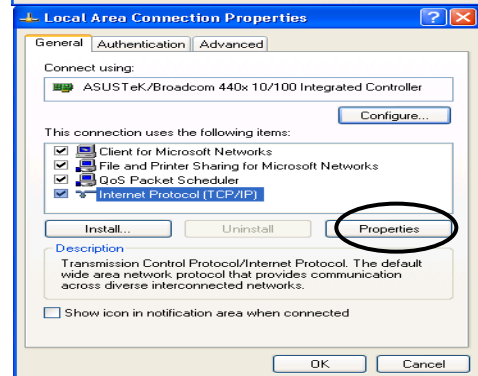
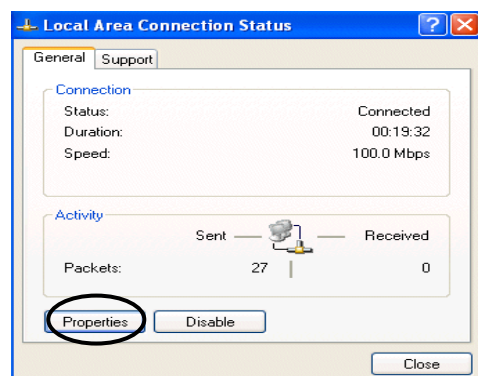
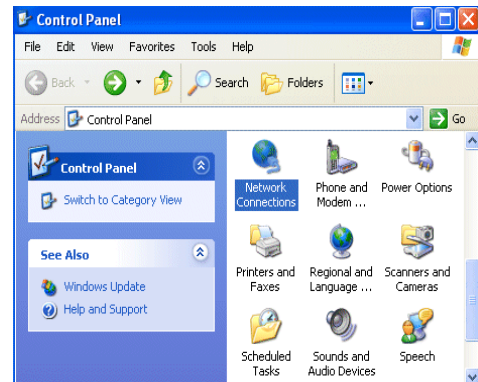
De hoofdpagina

Status	Quick Start	Interface Setup	Advanced Setup	Access Management	Maintenance	Status	Help
Device Info		System Log		Statistics			
Device Information	Firmware Version : 2.7.0.26(UE0.C2C)3.5.10.5 MAC Address : 00:04:ed:ff:f5:16						
LAN	IP Address : 192.168.1.254 Subnet Mask : 255.255.255.0 DHCP Server : Enabled						
WAN	Virtual Circuit : PVC0 Status : Not Connected Connection Type : PPPoE IP Address : 0.0.0.0 Subnet Mask : 0.0.0.0 Default Gateway : 0.0.0.0 DNS Server : 0.0.0.0						
ADSL	ADSL Firmware Ver : FwVer:3.5.10.5_A_TC3085 HwVer:T14.F7_1.0 Line State : Down Modulation : Multi-Mode Annex Mode : ANNEX_A						
		Downstream		Upstream			
SNR Margin :		N/A		N/A		db	
Line Attenuation :		N/A		N/A		db	
Data Rate :		0		0		kbps	

De netwerkeigenschappen configureren

De computer configureren onder Windows XP

1. Ga naar **Start / Control Panel (Configuratiescherm) (in Klassieke weergave)**. Dubbelklik in het Configuratiescherm op **Network Connections (Netwerkverbindingen)**
2. Dubbelklik op **Local Area Connection (LAN-verbinding)**.
3. Klik in het venster **Local Area Connection Status (Status van LAN-verbinding)** op **Properties (Eigenschappen)**.
4. Selecteer **Internet Protocol (TCP/IP)** en klik op **Properties (Eigenschappen)**.
5. Selecteer **Obtain an IP address automatically (Automatisch een IP-adres laten toewijzen)** en **Obtain DNS server address automatically (Automatisch een DNS-serveradres laten toewijzen)**.
6. Klik op **OK** om de configuratie te voltooien.

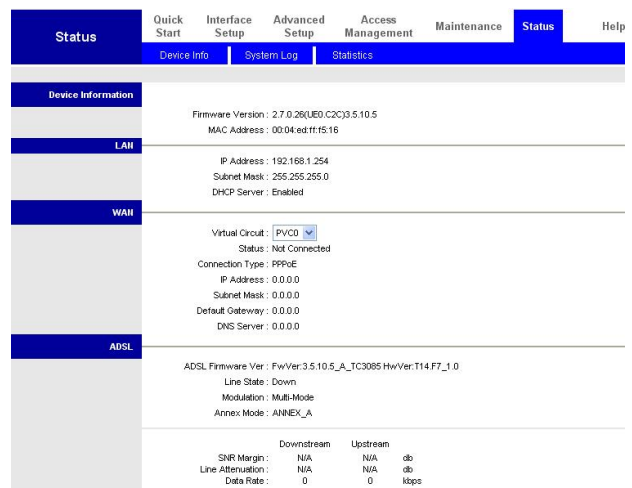


De ADSL2+ Modem/Router configureren

Opmerking

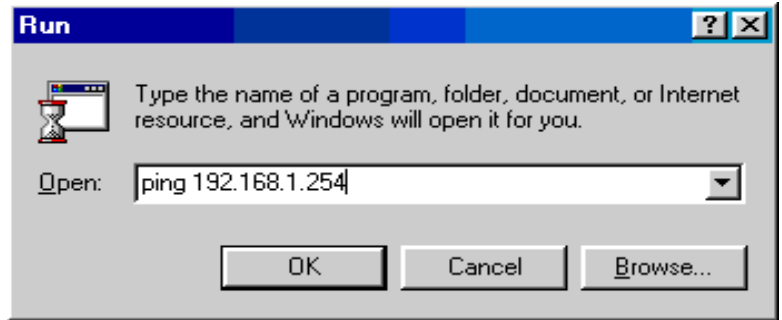
Om dit apparaat te configureren, moet u IE 5.0 of Netscape 4.5 of een latere versie hebben.

1. Open de webbrowser en typ <http://192.168.1.254> in het adresveld. Dat is het standaard-IP-adres van de router. Druk op **Enter**.
2. Er wordt gevraagd om een gebruikersnaam en een wachtwoord. **De standaard is admin en admin**. Klik op **OK** om verder te gaan.
3. Er verschijnt een statusverslag.

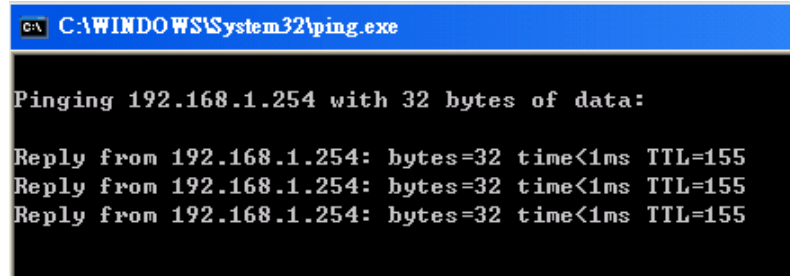


De locale netwerkverbinding van het apparaat controleren

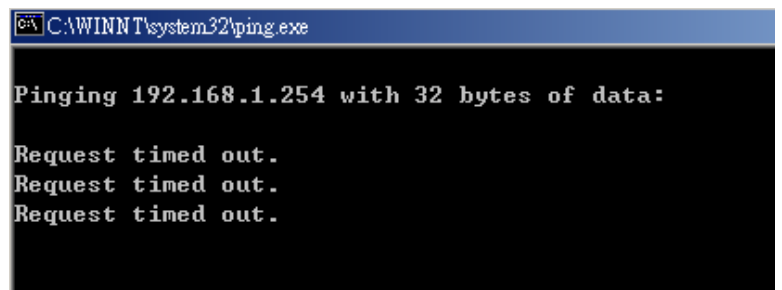
Om te zien of deze ADSL-router zichtbaar is op het locale netwerk, gaat u naar **Start / Run (Uitvoeren)**. Typ in het dialoogvenster Run (Uitvoeren) **ping 192.168.1.254** en klik op **OK**.



Er verschijnt een DOS-venster. Is de ping geslaagd, dan weet u dat het locale netwerk het apparaat kan bereiken. Het venster wordt automatisch gesloten.



De verbinding is mislukt als u **Request timed out (Time-out bij opdracht)** in het DOS-venster zit verschijnen. Het kan nodig zijn de hardware te controleren.



Emballagen indeholder

- D FBR-1161 ADSL2+ modem-router
- D Guide til kvikinstallation
- D Cd-rom med brugervejledning og driver
- D Lysnetadapter (12 V AC, 1A)
- D RJ-11 ADSL/telefonkabel
- D Cat.5 Ethernet-kabel
- D USB-kabel

Bemærk!

Læs brugervejledningen nøje med hensyn til detaljerede oplysninger om konfiguration og anvendelse af ADSL2+ modem-routeren.

Advarsel!

- **FBR-116-udstyret må ikke anvendes i omgivelser med høj luftfugtighed eller høje temperaturer.**
- **Samme strømkilde må ikke anvendes til FBR-116-udstyret som til andet udstyr.**
- **Kabinettet må ikke åbnes eller repareres. Sluk omgående for strømmen til FBR-1161-udstyret, hvis det bliver for varmt, og få det repareret hos et autoriseret servicecenter.**
- **Det udstyr med alle tilhørende dele må ikke anvendes udendørs.**

Vær forsigtig!

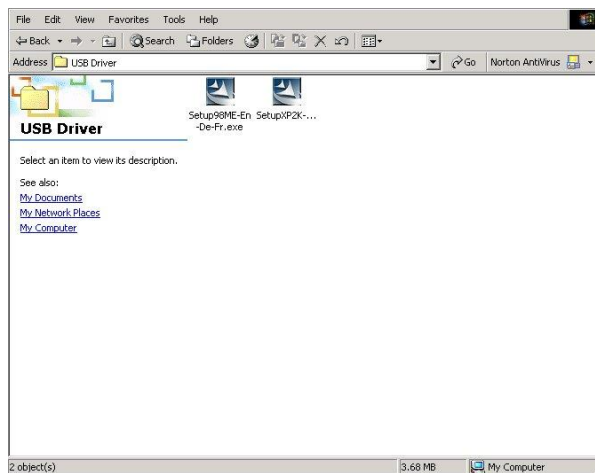
- **Placer FBR-1161-udstyret på et stabilt underlag.**
- **Anvend kun den medfølgende lysnetadapter. Anvendelse af en lysnetadapter med anden spænding kan nemlig forårsage skade på routeren.**

Installering af USB-driveren på en pc

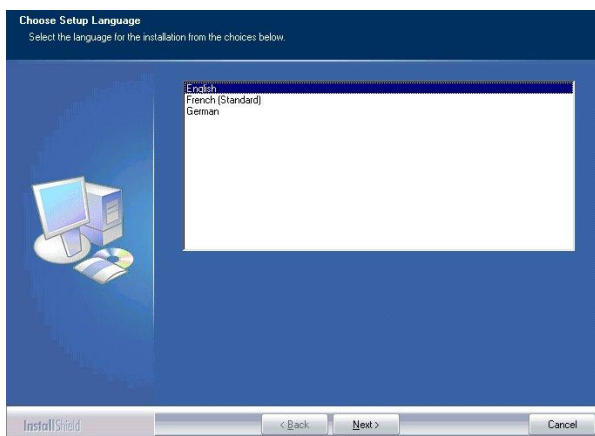
Hvis udstyret tilsluttes via USB-porten i stedet for Ethernet-porten den allerførste gang USB-kablet kobles c ã | Á] & q ^ } Ê Á * ^ } \ ^ } á ^ ! Á Y ã } á [, • Á æ ~ c [{ æ c ã • fremgangsmåde for at installere USB-driveren.

Gælder Windows XP og 2000:

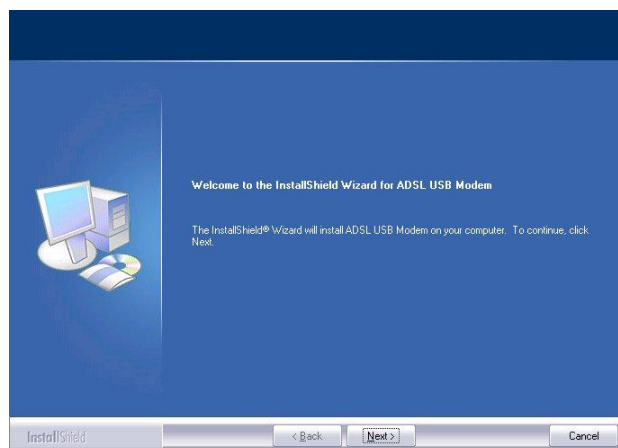
1. Û c æ ! c Á Y ã } á [, • È Á Q } á • installationsprogrammet i cd-rom-drevet. I det efterfølgende vindue angives den aktuelle å ! ã ç ^ ! { æ]] ^ USB ~ È ^ \ • È Á %c Driver • ^ c ~] Y Ú G S ' Ò } ' Ö ^ ' Ø ã fortsættes.



2. X ö | * Á ã } á • c ã | | ã } * • •] (Næ st). Der kan vælges mellem tre sprog, nemlig engelsk, fransk og tysk.

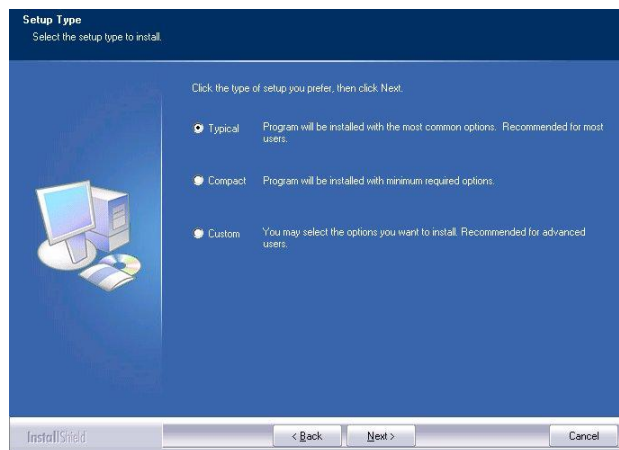


3. Følg derefter skærminstruktionerne.

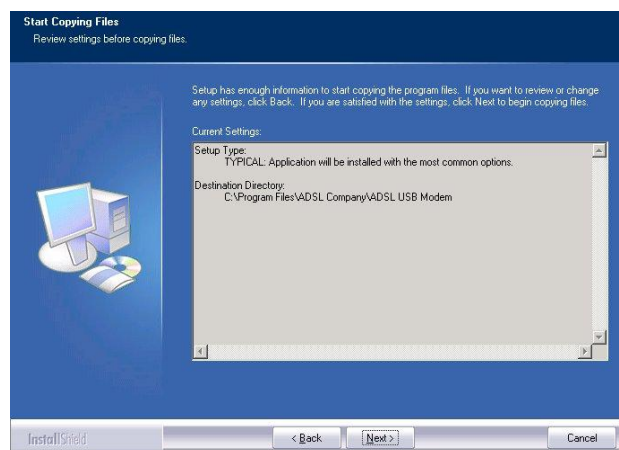


Danish

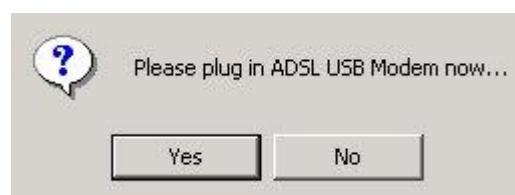
4. Klik på den foretrukne type af indstilling
[* Á \ | ã \ Á å ^ ! ^ ~ Næ^ste.Á] è Á +



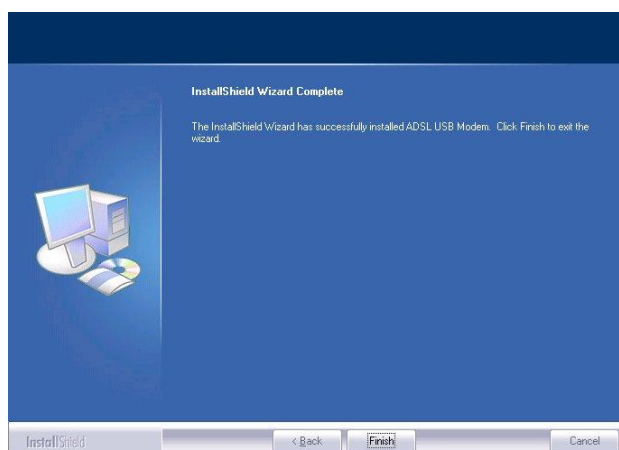
5. At indstille tilstrækkeligt med informationer til kopiering af programfilerne, klik derefter på Next > (Næste >)



6. Tilslut USB-kablet til ADSL USB-modemmet nu.



7. S | ã \ Á å ^ ! ^ ~ c Afslut.] è Á %0



8. Følgende skærbillede vil fremkomme.
 Brugernavn og Adgangskode for at konfigurere statusrapporten på vor website.

Please type your user name and password.

Site: 192.168.1.254

Realm: ADSL Modem/Router

User Name:

Password:

Save this password in your password list

OK Cancel

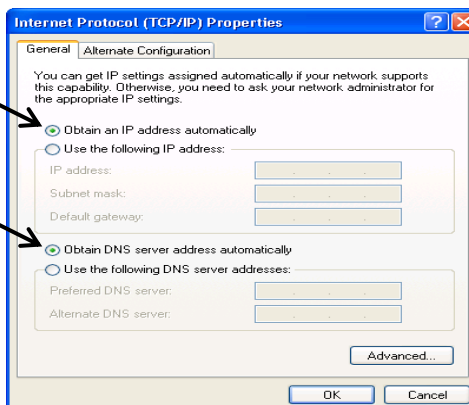
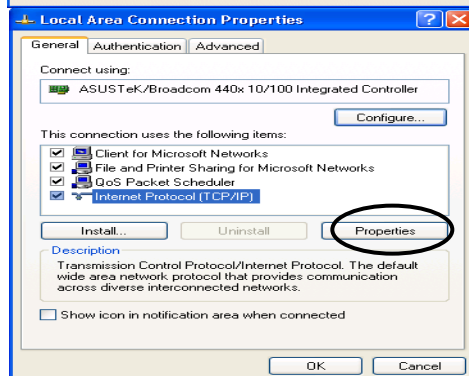
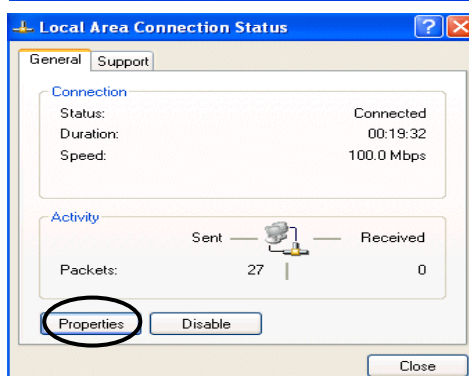
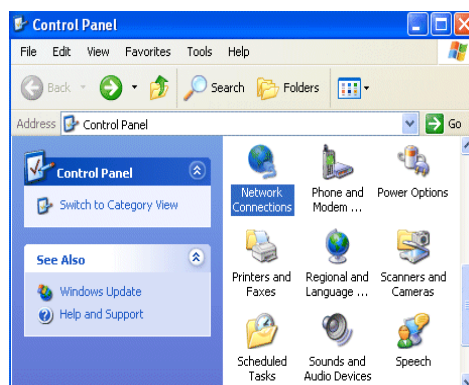
Hovedsiden

Status	Quick Start	Interface Setup	Advanced Setup	Access Management	Maintenance	Status	Help
	Device Info	System Log	Statistics				
Device Information	Firmware Version : 2.7.0.26(UE0.C2C)3.5.10.5 MAC Address : 00:04:ed:ff:f5:16						
LAN	IP Address : 192.168.1.254 Subnet Mask : 255.255.255.0 DHCP Server : Enabled						
WAN	Virtual Circuit : PYC0 Status : Not Connected Connection Type : PPPoE IP Address : 0.0.0.0 Subnet Mask : 0.0.0.0 Default Gateway : 0.0.0.0 DNS Server : 0.0.0.0						
ADSL	ADSL Firmware Ver : FwVer:3.5.10.5_A_TC3085 HwVer:T14.F7_1.0 Line State : Down Modulation : Multi-Mode Annex Mode : ANNEX_A						
			Downstream	Upstream			
	SNR Margin :	N/A	N/A	db			
	Line Attenuation :	N/A	N/A	db			
	Data Rate :	0	0	kbps			

Konfigurering af netværksegenskaberne

Konfigurering af en pc under Windows XP

1. Gå til **Start / Control Panel (in Classic View) (Start / Kontrolpanel)**. Dobbeltklik på **Network Connections (Netværksforbindelse)** i Kontrolpanelet,
2. Dobbeltklik på **Local Area Connection (Lokalnetværk)**.
3. Klik på **Properties (Egenskaber)** i vinduet **Local Area Connection Status (Status for lokalnetværksforbindelse)**.
4. Marker afkrydsningsfeltet **Internet Protocol (TCP/IP) (Internetprotokol (TCP/IP))** og klik på **Properties (Egenskaber)**.
5. Klik på radioknapperne **Obtain an IP address automatically (Indhent IP-adressen automatisk)** og **Obtain DNS server address automatically (Indhent DNS-serveradressen automatisk)**.
6. Klik **OK** for at afslutte konfigureringen.

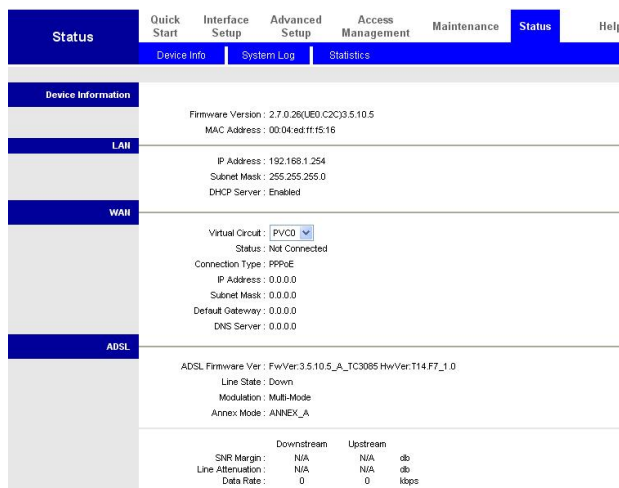


Konfigurering af ADSL2+ modem-routeren

Bemærk!

Der skal være installeret Internet Explorer 5.0 / Netscape 4.5 eller nyere version på forhånd for at dette udstyr kan konfigureres!

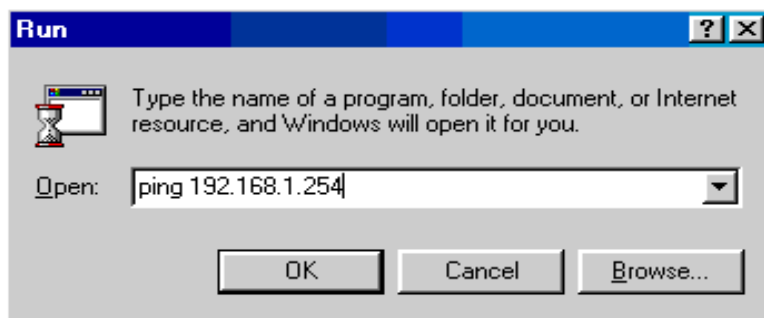
1. Åbn web-browseren og indtast <http://192.168.1.254> i browserens adressefelt. Dette er standard IP-adressen på denne router. Tryk på **Enter**.
2. Der fremkommer et vindue til Brugernavn (username) og en Adgangskode (password). **Standardangivelserne for brugernavnet og adgangskode er hhv. admin og admin.** Tryk **OK** for at fortsætte.
3. Statusrapporten fremkommer på websiden, som vist her.



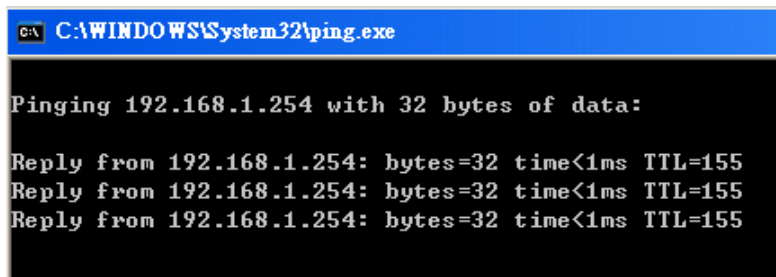
Danish

Verificering af lokalnetværksforbindelsen med udstyret

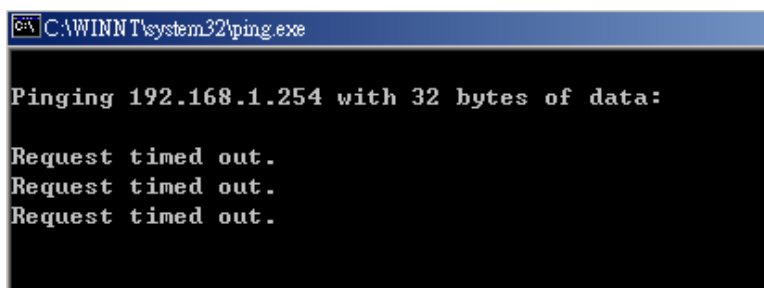
For at se, om denne ADSL-router fremstår på lokalnetværket, skal du gå til to **Start / Run (Start / Kør)**. Indtast **Í d] b [' %- & " .%* , " %** dialogboksen Run (*Kør*) og klik **OK**.



Der fremkommer et kommandovindue. Hvis ping er lykkedes korrekt, hvilket betyder at lokalnetværket har opnået forbindelse med udstyret, lukkes kommandovinduet automatisk.



Forbindelsen er mislykket, hvis **c ^ \ • RequYá% · h] a Y X (Tidsfristen for anmodningen er udløbet)** fremkommer i kommandovinduet. I så fald skal hele indstillingen kontrolleres.





Contenuti della confezione

- D Modem Router BR-1161 ADSL2+
- D Guida all'installazione rapida
- D CD-ROM con Manuale / Driver
- D Adattatore di corrente CA-CA (12VAC, 1A)
- D Cavo ADSL/telefono RJ-11
- D Cavo Ethernet categoria 5
- D Cavo USB

Nota

Modem Router, fare riferimento al Manuale utente.

Avviso

- *Non usare FBR-1161 in ambienti umidi e ad alte temperature.*
- *Non usare la stessa presa di corrente per alimentare FBR-1161 ed altre attrezzature.*
- *Non aprire o riparare da sé il dispositivo. Se FBR-1161 è troppo caldo, rivolgetevi al centro assistenza qualificato.*
- *Evitare di usare il prodotto e tutti i suoi accessori in esterni.*

Attenzione

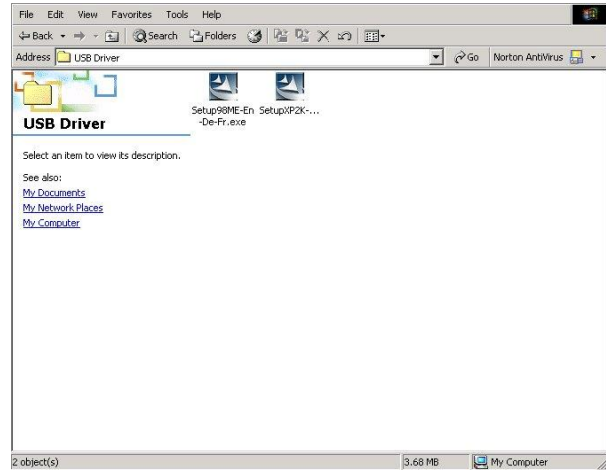
- *Collocare FBR-1161 su una superficie stabile.*
- *Usare solamente gli adattatori di corrente con potenza diversa può danneggiare il router.*

Installazione del driver USB sul PC

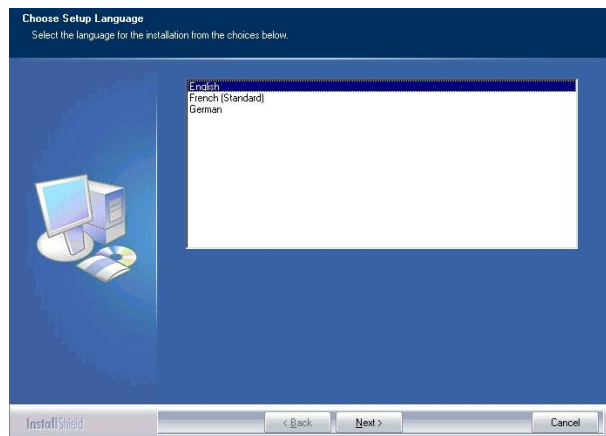
Se si collega il dispositivo usando la porta USB, invece della porta Ethernet, la prima volta che si collega il cavo USB al PC, Windows rileverà automaticamente il dispositivo. Attenersi alle fasi che seguono per installare il driver USB.

Utenti Windows XP e 2000:

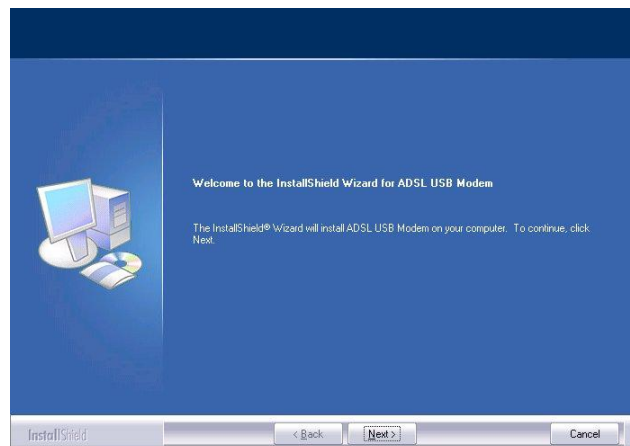
1. Avviare Windows. Inserire il CD d'installazione nell'unità CD-ROM. Nella finestra successiva, specificare la directory del Driver USB.



2. Scegliere la lingua di installazione (tre lingue: Inglese, Tedesco e Francese).

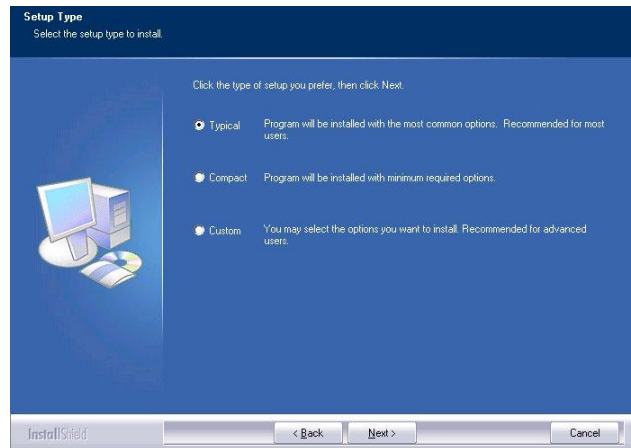


3. Seguire le istruzioni su schermo.

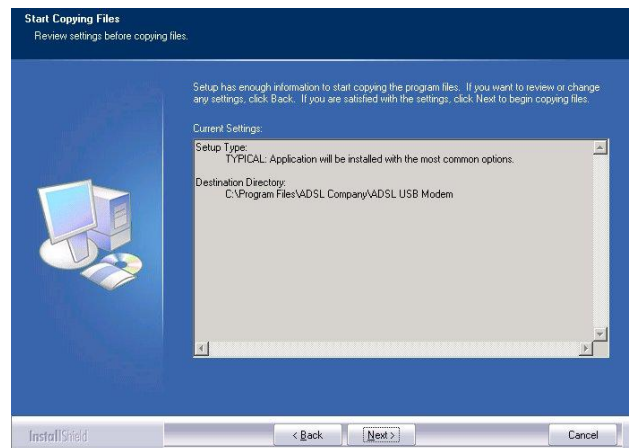


Italiano

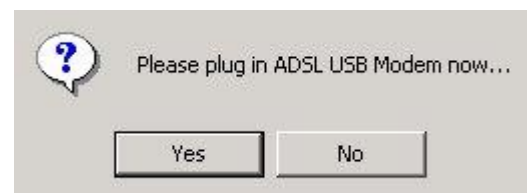
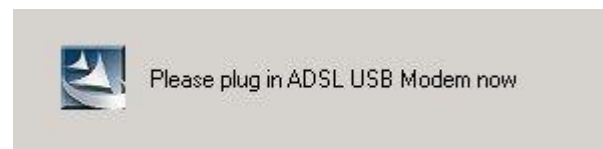
4. **Ù & ^ * | ã ^ ! ^ Á ã | Á c ã] [Á à**
poi fare clic su **Next >** (Avanti >).



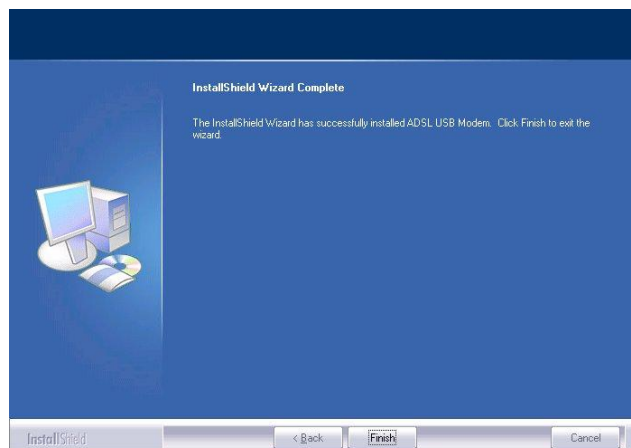
5. **Š q ã } • c æ | | æ : ã [} ^ Á @æÁ**
per iniziare a copiare i file di programma, fare clic su **Next >** (Avanti >).



6. Collegare il cavo USB al modem ADSL USB.



7. **Ø æ ! ^ Á & | ã & Á • ~ Á % Ø ã } ã •**



8. Sullo schermo apparirà una finestra;

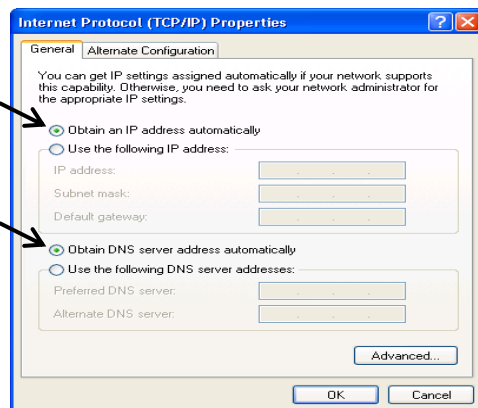
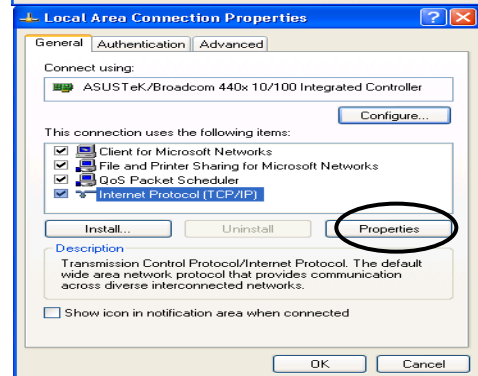
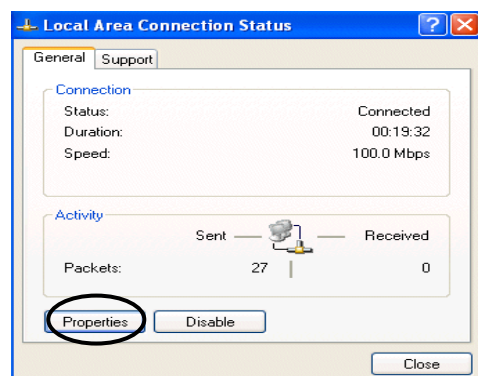
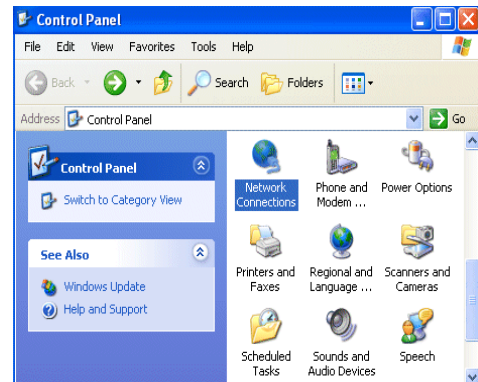
Pagina principale

Status	Quick Start	Interface Setup	Advanced Setup	Access Management	Maintenance	Status	Help
Device Info		System Log		Statistics			
Device Information	Firmware Version : 2.7.0.26(UE0.C2C)3.5.10.5 MAC Address : 00:04:ed:ff:f5:16						
LAN	IP Address : 192.168.1.254 Subnet Mask : 255.255.255.0 DHCP Server : Enabled						
WAN	Virtual Circuit : PVC0 Status : Not Connected Connection Type : PPPoE IP Address : 0.0.0.0 Subnet Mask : 0.0.0.0 Default Gateway : 0.0.0.0 DNS Server : 0.0.0.0						
ADSL	ADSL Firmware Ver : FwVer:3.5.10.5_A_TC3085 HwVer:T14.F7_1.0 Line State : Down Modulation : Multi-Mode Annex Mode : ANNEX_A						
			Downstream	Upstream			
	SNR Margin :	N/A	N/A	N/A	db		
	Line Attenuation :	N/A	N/A	N/A	db		
	Data Rate :	0	0	0	kbps		

Configurazione delle proprietà di rete

Configurazione del PC con Windows XP

1. Andare su **Start / Control Panel (Pannello di controllo) (in visualizzazione classica)**. Nel Pannello di controllo fare doppio clic su **Network Connections (Rete e connessioni Internet e poi su Connessioni di rete)**.
2. Fare doppio clic su **Local Area Connection (Connessione alla rete locale (LAN))**.
3. **Local Area Connection (Connessione alla rete locale (LAN))**, poi selezionare **Properties (Proprietà)** nel menu a comparsa.
4. Selezionare **Internet Protocol (TCP/IP) (Protocollo Internet (TCP/IP))** e fare clic su **Properties (Proprietà)**.
5. **Obtain an IP address automatically (Ottieni automaticamente un indirizzo IP) e Obtain DNS server address automatically (Ottieni indirizzo server DNS automaticamente)**.
6. Fare clic su **OK** per terminare la configurazione.



Configurazione di ADSL2+ Modem/Router

Nota

È necessario avere installato Internet Explorer 5.0 / Netscape 4.5, o versione più recente, per potere configurare questo dispositivo.

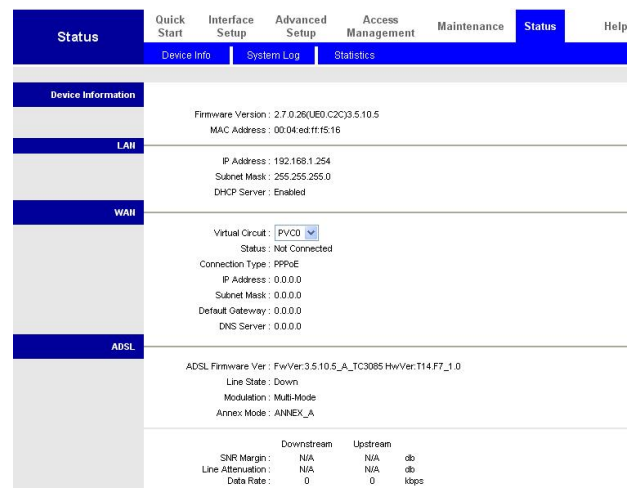
1. Aprire il Browser Web e scrivere <http://192.168.1.254> nella barra di indirizzo predefinito di questo router. Premere **Enter**.



2. Appaia una finestra che richiede nome utente e password. **Per impostazione predefinita il nome utente e la password sono admin ed admin.** Premere **OK** per procedere.

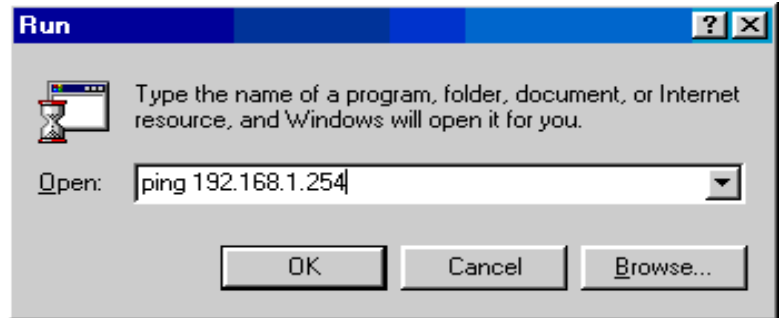


3. Si otterrà una pagina web di stato.

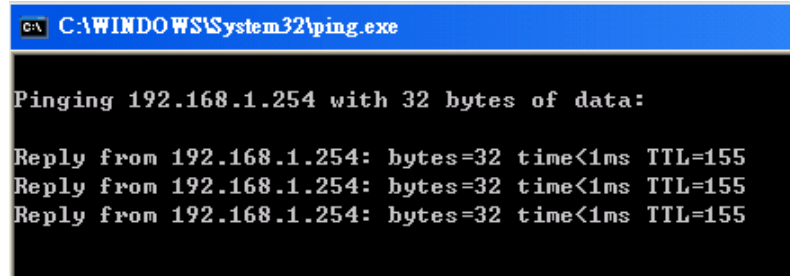


Verifica della connessione locale con il dispositivo

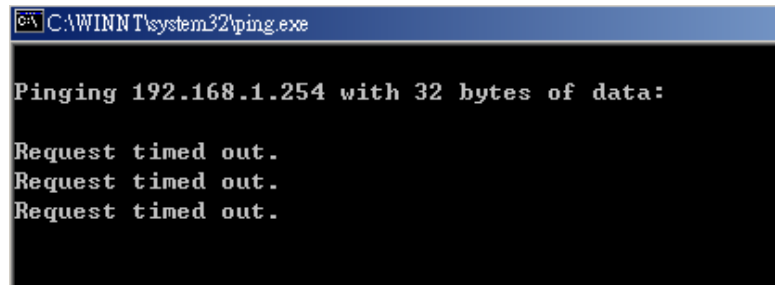
Per verificare che questo ADSL Router sia visibile alla rete locale, andare su **Start / Run (Esegui)**. Nella finestra di dialogo Run (Esegui), scrivere `ping 192.168.1.254` e premere **OK**.



Apparirà una finestra di prompt dei comandi. Se il ping va a buon fine, vale a dire che la rete locale è in grado di raggiungere il dispositivo, la finestra di prompt dei comandi si chiuderà automaticamente.



Se la connessione non riesce, nella finestra di prompt dei comandi apparirà il messaggio `Request timed out.` (Time out richiesta). Sarà necessario controllare la configurazione.



EL

D FBR-F F Î F Á œ Ö ù Š G É Á Á Á
D Á Á
D CD-Ü UT Á Á Á Đ Á Á
D -AC (12VAC, 1000
D -F F Á Ü Ö ù Š Đ Á
D Á Ò c @ ^ ! } ^ c Á È í Á
D W ù Ó Á

5 8 G @ & Ž

ž

ö " -%%* % " : 6 F
ö " -%%* %
ö " FBR-1161
ö " ž
ö "

ö -%%* % : 6 F " " " " " "



Á
Á

Á Á
Á Á

Á WÙ Ó Á Á
Á WÙ Ó Á Á

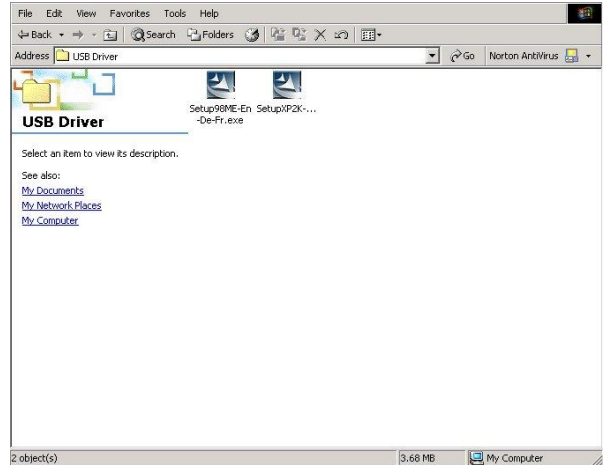
Á Á
Á Á

Á Á
Á Á

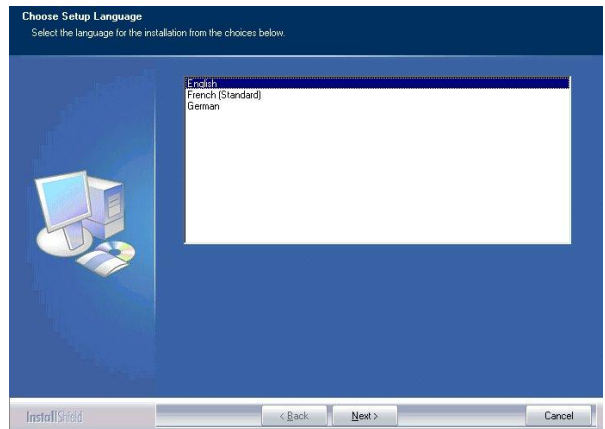
Á Á
É Á Á
Á Á

K] b X c k g L D / & \$ \$ \$

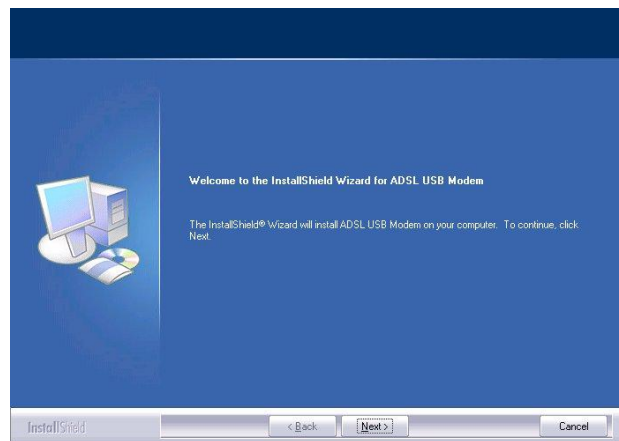
1. Á Á Y ã } á [, • È
Á Á Ô Ö Á
CD-Ü UT È Á
Á Á
Driver\• ^ c ~] Y Ú G S ' Ò } ' Ö ^ ' Ø ã



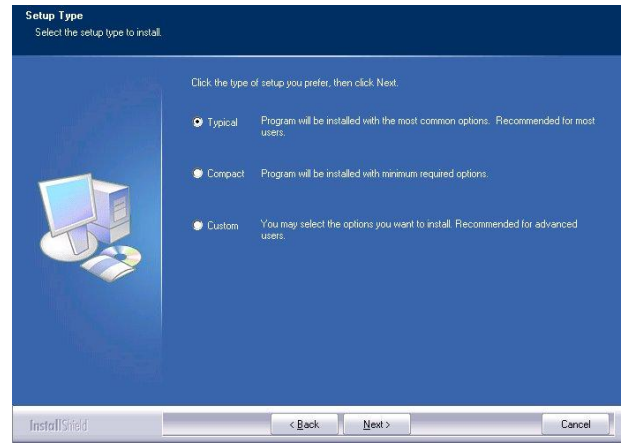
2. Á Á
È Á + Next Á
N () È Á Ç
Á Á Á Á Á



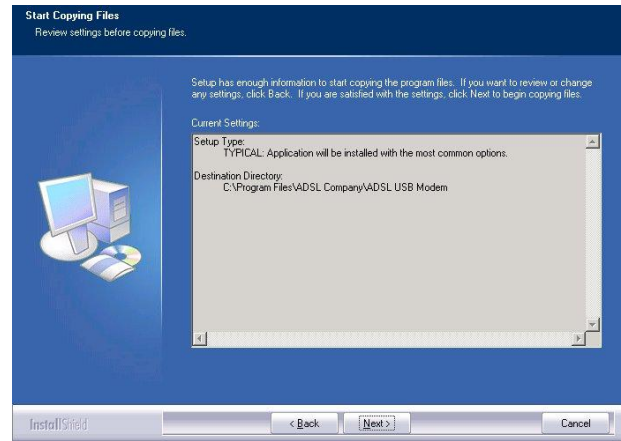
3. Á Á



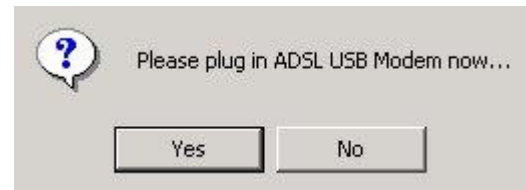
4. [Redacted] Á Á Á Á Á
 Next >()



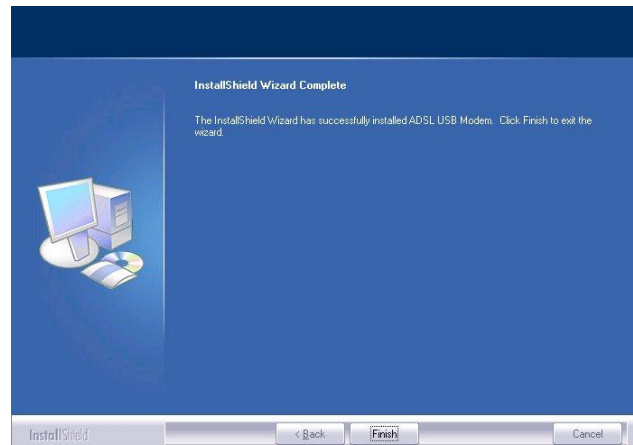
5. % Á Á Á Á Á
 Á Á N +



6. Á œö ù š Á wù ó Á Á



7. Ê Á %inishÁ(). Á



8. Username+(Password%)

Please type your user name and password.

Site: 192.168.1.254

Realm: ADSL Modem/Router

User Name:

Password:

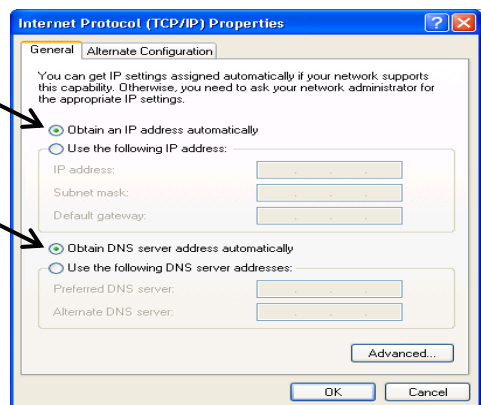
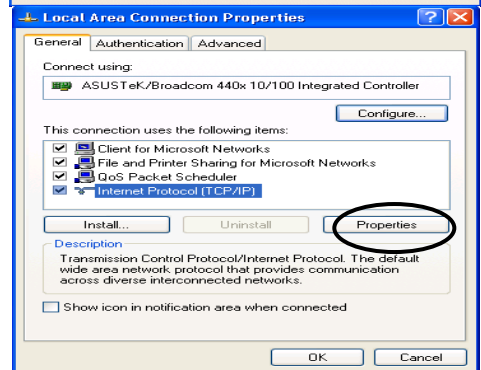
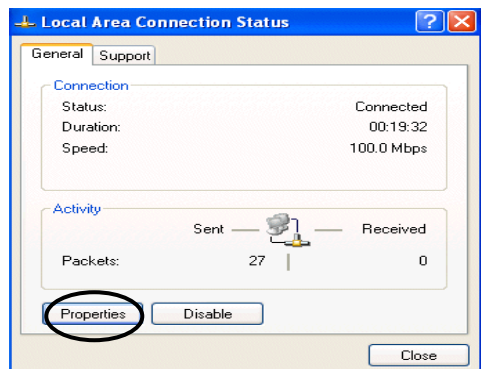
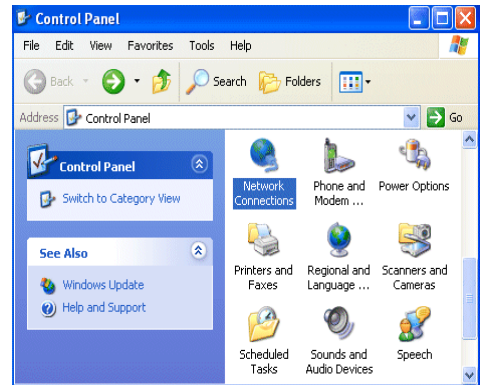
Save this password in your password list

OK Cancel

Á Á

Status	Quick Start	Interface Setup	Advanced Setup	Access Management	Maintenance	Status	Help
	Device Info	System Log	Statistics				
Device Information	Firmware Version : 2.7.0.26(UE0.C2C)3.5.10.5 MAC Address : 00:04:ed:ff:f5:16						
LAN	IP Address : 192.168.1.254 Subnet Mask : 255.255.255.0 DHCP Server : Enabled						
WAN	Virtual Circuit : PVC0 Status : Not Connected Connection Type : PPPoE IP Address : 0.0.0.0 Subnet Mask : 0.0.0.0 Default Gateway : 0.0.0.0 DNS Server : 0.0.0.0						
ADSL	ADSL Firmware Ver : FwVer:3.5.10.5_A_TC3085 HwVer:T14.F7_1.0 Line State : Down Modulation : Multi-Mode Annex Mode : ANNEX_A						
		Downstream	Upstream				
	SNR Margin :	N/A	N/A	db			
	Line Attenuation :	N/A	N/A	db			
	Data Rate :	0	0	kbps			

1. **Click on the Network Connections icon in the Control Panel.**
2. **Click on the Local Area Connection icon.**
3. **Click on the Local Area Connection Status icon.**
4. **Click on the Internet Protocol (Internet) (TCP/IP) Properties icon.**
5. **Click on the Obtain an IP address automatically (IP) Obtain DNS server address automatically (DNS).**
6. **Click on the OK button.**



5.0 / Netscape 4.5

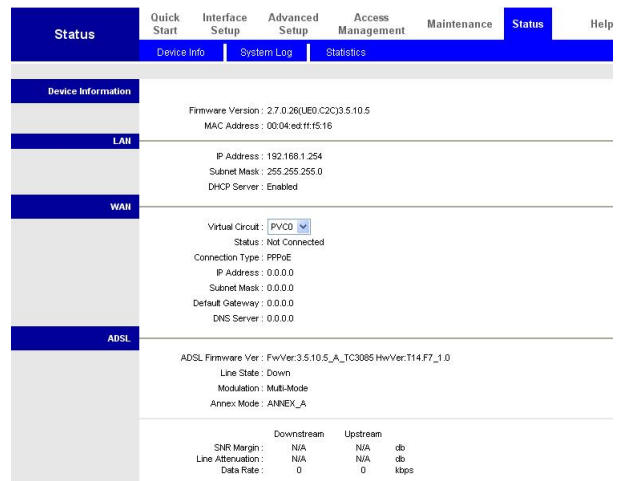
1. <http://192.168.1.254>
 Enter



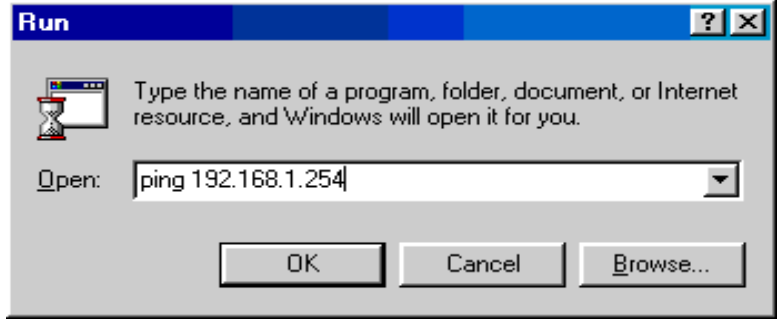
2. ()
 UX a] b
 OK



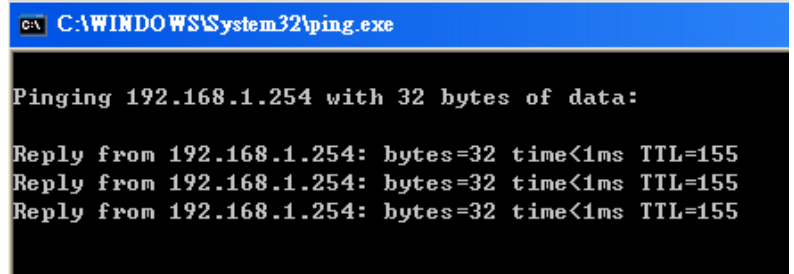
3. Á, ^ à È Á



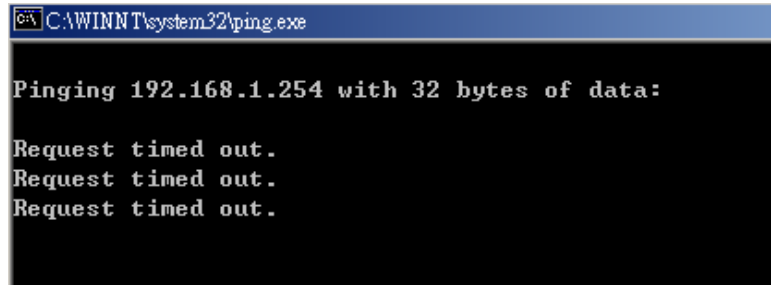
Á Á Á Á OEÖ
 Á Á
 G h U f h · flÁ/
 F i b · fl . Á Ł
 Á
 Í d] b [· Á
 %- & " %* , " %" &) (î ·
 OK.Á



Á Á Á
] ã } * Á Á Á
 Á Á Á Á Á
 Á Á Á Á



Á Á Á
 Á Á Request timed out
 c i h î : fl · Á
 · Á Á
 È Á Á
 Á Á



Conteúdo da embalagem

- D Modem Router FBR-1161 ADSL2+
- D Guia de instalação rápida
- D CD-ROM com manual / controlador
- D Transformador a.c.-a.c. (a.c. 12 V, 1 A)
- D Cabo RJ-11 ADSL/telefónico
- D Cabo Ethernet Cat.5
- D Cabo USB

Nota

Para instruções mais detalhadas sobre a configuração e utilização do Modem Router ADSL2+, consulte o manual do utilizador

Aviso

- ⓘ ***Não utilize o FBR-1161 em ambientes de muita humidade ou de temperaturas elevadas.***
- ⓘ ***Não utilize a fonte de alimentação de outros equipamentos com o FBR-1161.***
- ⓘ ***Não tente abrir ou reparar o dispositivo pelos seus próprios meios. Se o FBR-1161 estiver muito quente, desligue-o imediatamente e recorra a um centro de assistência para que o dispositivo seja reparado.***
- ⓘ ***Evite utilizar este dispositivo e respectivos acessórios fora de casa.***

Atenção

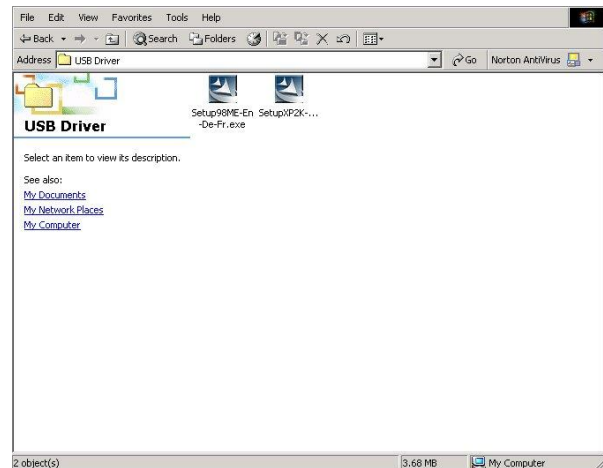
- ⓘ ***Coloque o FBR-1161 sobre uma superfície estável.***
- ⓘ ***Utilize apenas o transformador que vem incluído na embalagem. A utilização de um transformador com uma voltagem diferente pode danificar o router.***

Instalação do controlador USB no PC

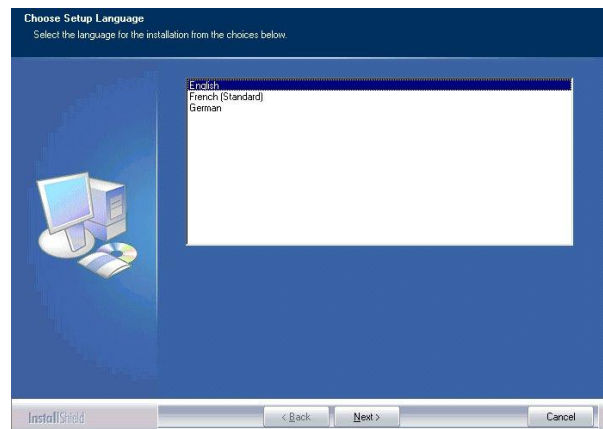
Se fizer a ligação do dispositivo através da porta USB em vez da porta Ethernet, da primeira vez que ligar o cabo USB ao PC o Windows detectará o dispositivo automaticamente. Siga as etapas seguintes para instalar o controlador USB.

Para o Windows XP & 2000

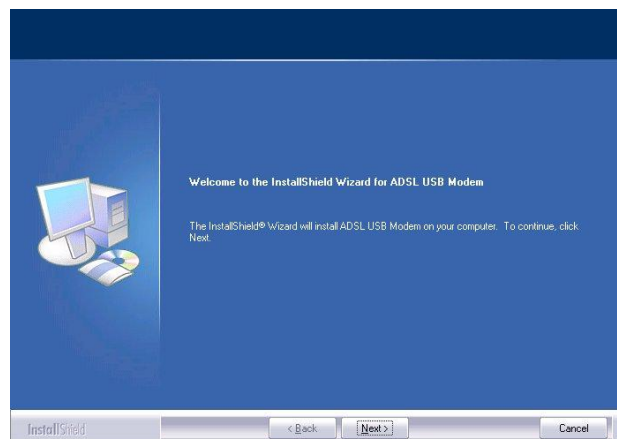
1. Inicie o Windows. Introduza o CD de instalação na unidade de CD-ROM. Na janela seguinte, especifique o directório onde se encontra o controlador como, por exemplo %USB Driver\... prossiga com a instalação



2. Escolha o idioma pretendido. Depois, escolha o idioma que o utilizador pode escolher: English (Inglês), German (Alemão) e French (Francês)

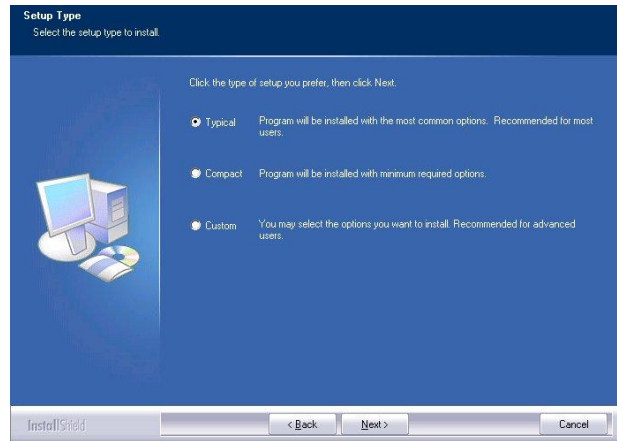


3. De seguida, siga as instruções apresentadas no ecrã.

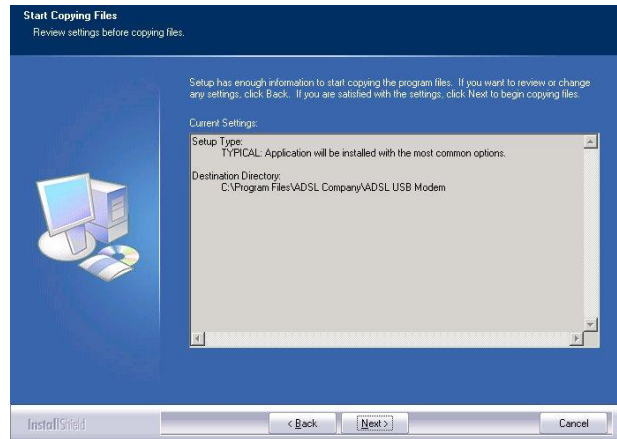


Português

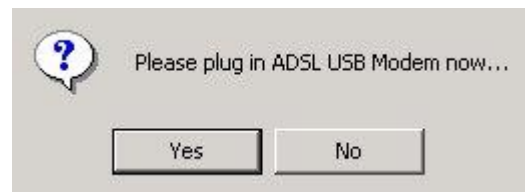
4. Escolha o tipo de instalação que pretende e clique em Next (Seguinte).



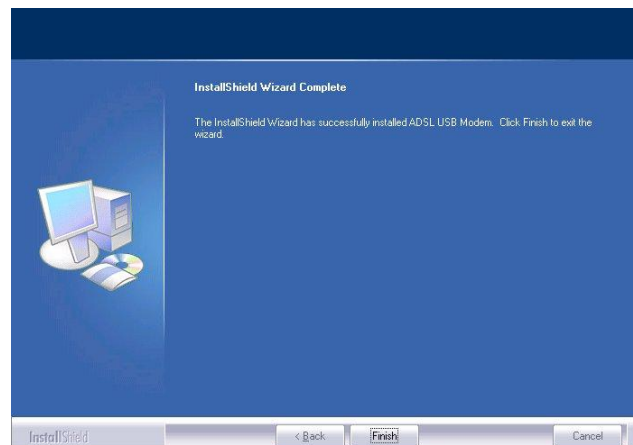
5. Verifique a informação relativa à cópia dos ficheiros do programa e clique em Next (Seguinte).



6. Ligue o cabo USB ao modem USB ADSL



7. De seguida, clique em "Finish" (Concluir).



8. Será apresentada a janela seguinte.
 Será configurado o relatório de estado na página web.

Please type your user name and password.

Site: 192.168.1.254

Realm: ADSL Modem/Router

User Name:

Password:

Save this password in your password list

OK Cancel

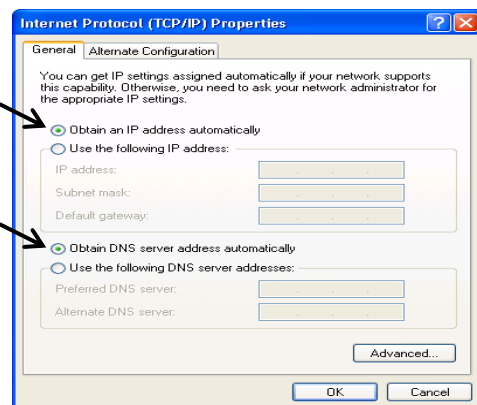
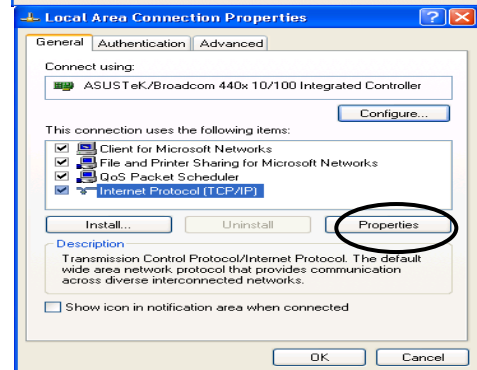
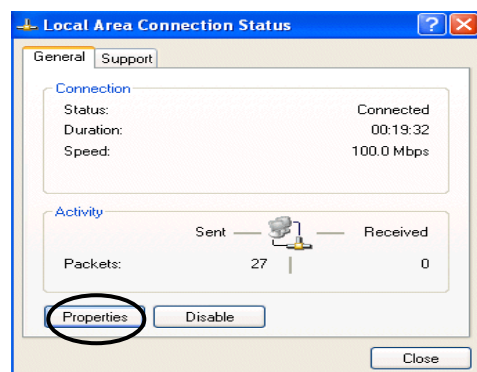
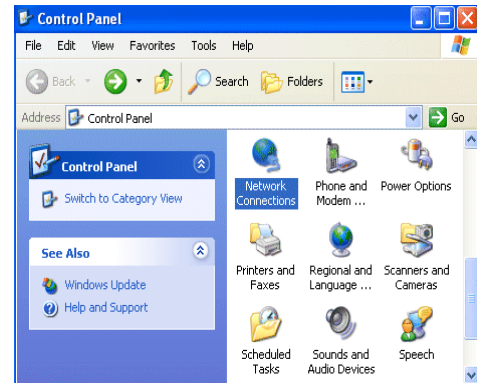
Página principal

Status	Quick Start	Interface Setup	Advanced Setup	Access Management	Maintenance	Status	Help
	Device Info	System Log	Statistics				
Device Information	Firmware Version : 2.7.0.26(UE0.C2C)3.5.10.5 MAC Address : 00:04:ed:ff:f5:16						
LAN	IP Address : 192.168.1.254 Subnet Mask : 255.255.255.0 DHCP Server : Enabled						
WAN	Virtual Circuit : PVC0 Status : Not Connected Connection Type : PPPoE IP Address : 0.0.0.0 Subnet Mask : 0.0.0.0 Default Gateway : 0.0.0.0 DNS Server : 0.0.0.0						
ADSL	ADSL Firmware Ver : FwVer:3.5.10.5_A_TC3085 HwVer:T14.F7_1.0 Line State : Down Modulation : Multi-Mode Annex Mode : ANNEX_A						
		Downstream	Upstream				
	SNR Margin :	N/A	N/A	db			
	Line Attenuation :	N/A	N/A	db			
	Data Rate :	0	0	kbps			

Configuração da opção Network Properties (Propriedades de rede)

Configuração do PC no Windows XP

1. Vá até **Start / Control Panel (in Classic View) (Iniciar / Painel de controlo (vista clássica))**. No Control Panel (Painel de controlo), faça um duplo clique sobre a opção **Network Connections (Ligações de rede)**.
2. Faça um duplo sobre a opção **Local Area Connection (Ligação de área local)**.
3. Na janela **Local Area Connection Status (Estado da ligação de área local)**, clique em **Properties (Propriedades)**.
4. Seleccione a opção **Internet Protocol (TCP/IP) (Protocolo Internet (TCP/IP))** e clique em **Properties (Propriedades)**.
5. Seleccione os botões de opção **Obtain an IP address automatically (Obter um endereço IP automaticamente)** e **Obtain DNS server address automatically (Obter endereço do servidor DNS automaticamente)**.
6. Clique em **OK** para concluir a configuração.



Configuração do Modem Router ADSL2+

Nota

Para configurar este dispositivo terá de ter o IE 5.0 / Netscape 4.5 ou acima instalado

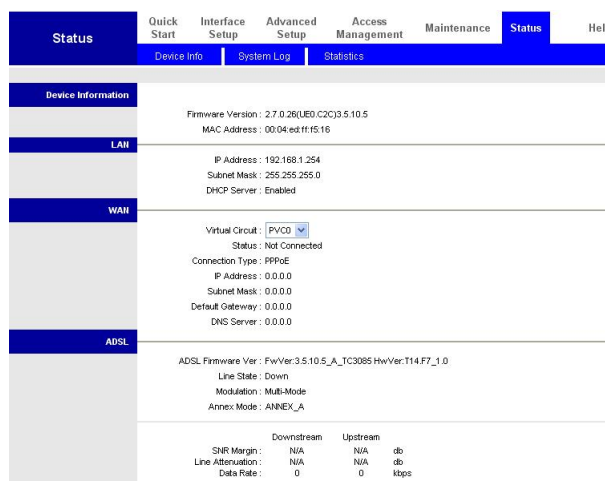
1. Abra o browser da web e digite o endereço <http://192.168.1.254> na barra de endereço do browser. Este número é o endereço IP predefinido do router. Prima a tecla **Enter**.



2. Será apresentada uma janela para introdução do nome de utilizador e da senha. **Em ambos os casos, o nome de utilizador e a senha é admin.** Prima **OK (OK)** para prosseguir.



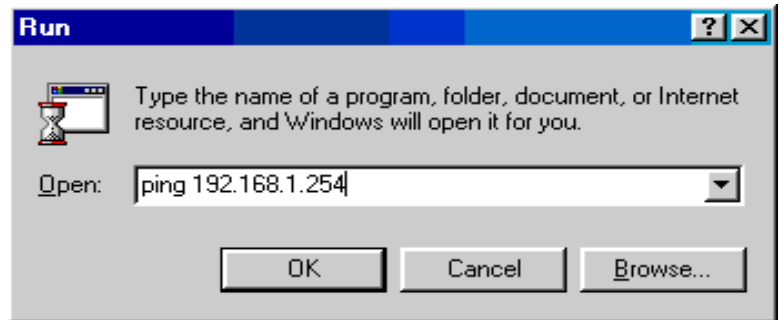
3. Na página web será apresentado um relatório de estado.



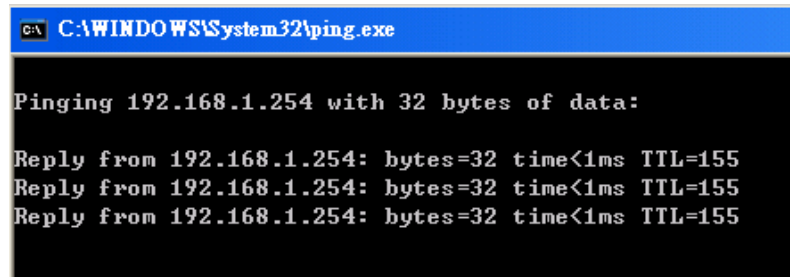
Português

Verificação da ligação do router à rede local

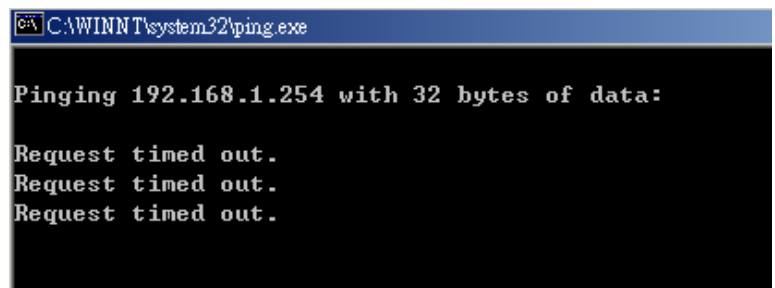
Para ver se este router ADSL consta da rede local, vá até **Start/Run (Iniciar/Executar)**. No campo Run (Executar), digite **cmd** e pressione a tecla **OK (OK)**.



Será apresentada uma janela com linhas de comando. Se o ping for feito com êxito, ou seja se a rede local conseguir comunicar com o dispositivo, a janela contendo as linhas de comando fechar-se-á automaticamente.



Sempre que vir a mensagem **Request timed out** na janela de linhas de comando é porque a ligação falhou. Neste caso, poderá ter de verificar a configuração.



- D FBR-1161 ADSL2+ Modem Router
- D 快速安裝手冊
- D CD-ROM 使用手冊 / 驅動程式
- D AC-AC 電源供應器 (12VAC, 1A)
- D RJ-11 ADSL / 電話線
- D Cat.5 網路線
- D USB 連接線

附註

如需更進一步了解本產品詳細設定，請參考使用手冊

警告

- ⊘ 請勿在高溼度高溫環境下使用本產品
- ⊘ 請勿使用其它電源供應器
- ⊘ 請勿自行打開或者維修本產品；如產品過熱，請立即移除電源並送至維修中心檢測
- ⊘ 請勿在室外使用本產品

注意

- ⊘ 請將本產品設置於穩固平面
- ⊘ 請使用包裝內含之電源供應器，不同之電源可造成產品故障或者燒毀。

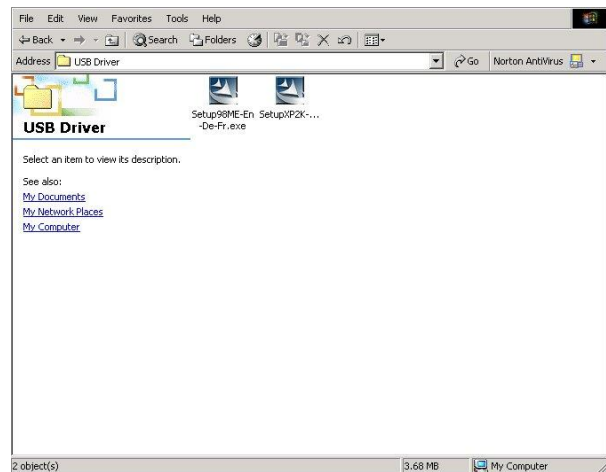
USB

如果利用 USB 介面接連你的個人電腦提供網際網路服務，你必須在你的個人電腦上安裝 USB 驅動程式。當 PC 第一次接上 USB 會自動偵測到新的設備並準備安裝相關的驅動程式；按照下面步驟來安裝 USB 驅動程式。

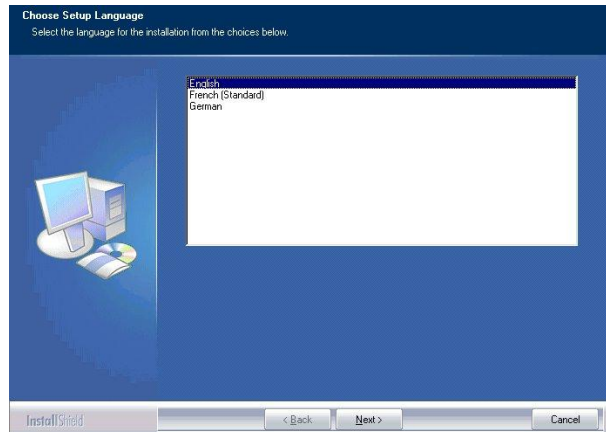
For Windows XP & 2000

1. 將驅動程式光碟放入電腦光碟機中，在光碟機路徑裡執行驅動程式檔案，例如：

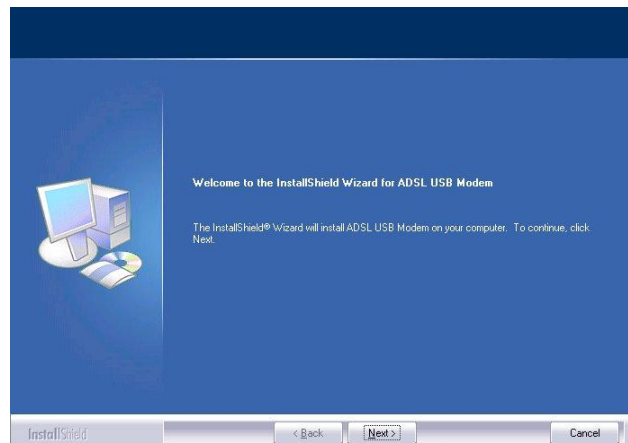
G:\USB Driver\setupXP2K_En_De_Fi



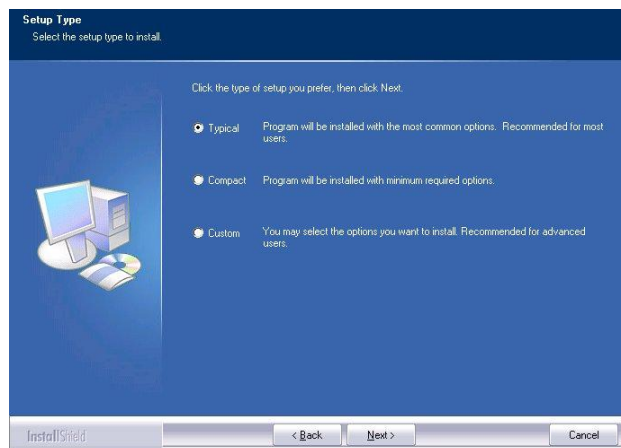
2. 選擇語言然後按下 Next> 繼續 (預設有英文、德文、法文選擇)



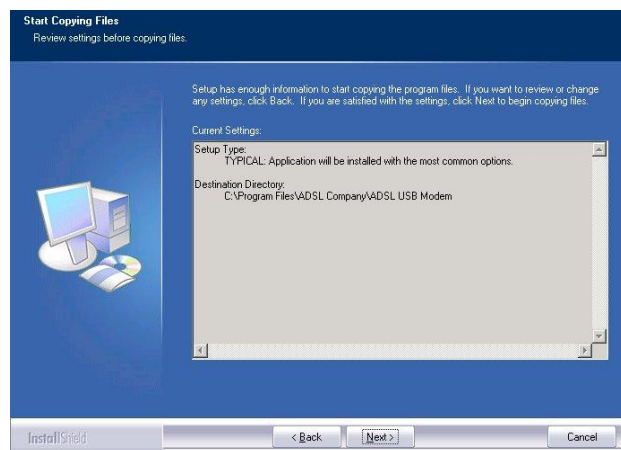
3. 依照螢幕上的指示、按下 Next> 繼續



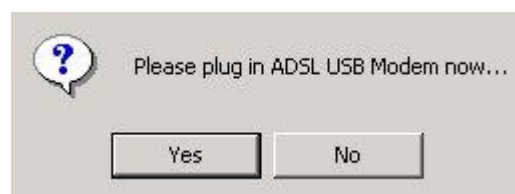
4. 選擇安裝方式，通常選擇預設值 Typical 然後按下 Next > 繼續



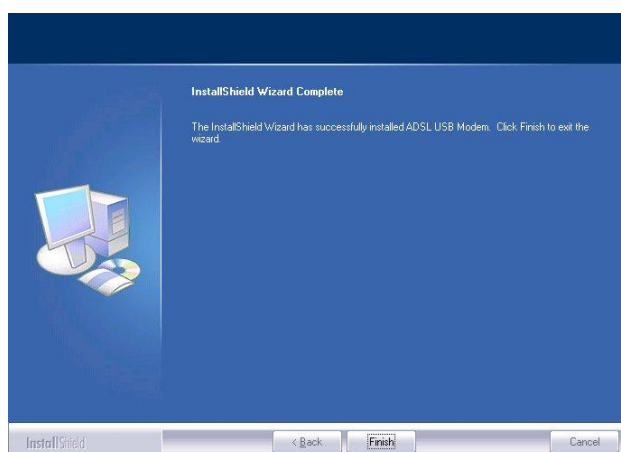
5. 準備安裝驅動程式，按下 Next > 繼續



6. 將 USB Cable 連接，如畫面所示



7. 按下 Finish 完成安裝



8. 開啟網頁，在網址輸入 192.168.1.254 預設值 IP，網頁會提示輸入使用者名稱與密碼。輸入預設值的帳號與密碼後按下 OK，進入主選單如下圖：

Please type your user name and password.

Site: 192.168.1.254

Realm: ADSL Modem/Router

User Name:

Password:

Save this password in your password list

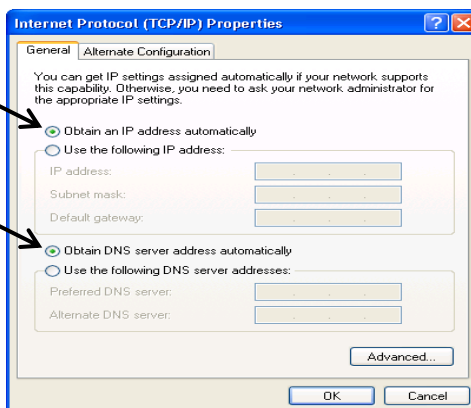
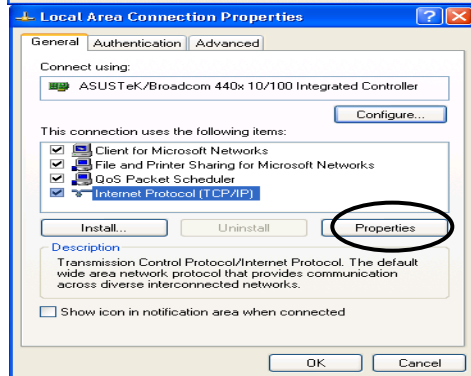
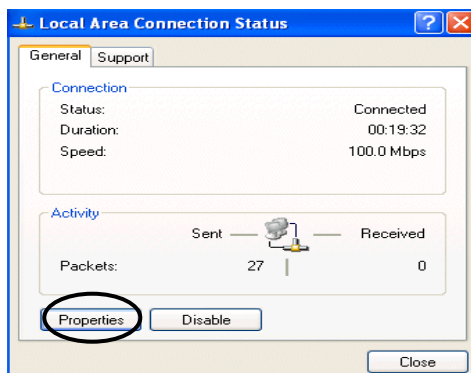
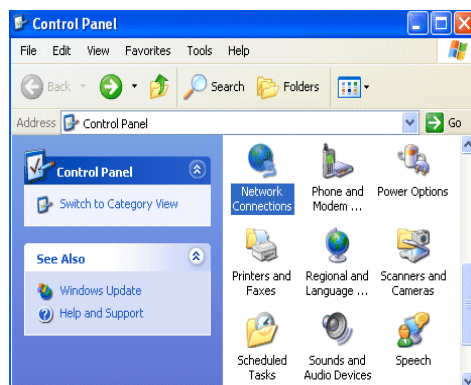
OK Cancel

主選單畫面

Status	Quick Start	Interface Setup	Advanced Setup	Access Management	Maintenance	Status	Help
	Device Info	System Log	Statistics				
Device Information	Firmware Version : 2.7.0.26(UE0.C2C)3.5.10.5 MAC Address : 00:04:ed:ff:f5:16						
LAN	IP Address : 192.168.1.254 Subnet Mask : 255.255.255.0 DHCP Server : Enabled						
WAN	Virtual Circuit : PVC0 Status : Not Connected Connection Type : PPPoE IP Address : 0.0.0.0 Subnet Mask : 0.0.0.0 Default Gateway : 0.0.0.0 DNS Server : 0.0.0.0						
ADSL	ADSL Firmware Ver : FwVer:3.5.10.5_A_TC3085 HwVer:T14.F7_1.0 Line State : Down Modulation : Multi-Mode Annex Mode : ANNEX_A						
		Downstream	Upstream				
	SNR Margin :	N/A	N/A	db			
	Line Attenuation :	N/A	N/A	db			
	Data Rate :	0	0	kbps			

Windows XP

1. 進入控制台點選並執行網路連線
2. 點選執行區域網路連線
3. 在區域網路連線狀態視窗點選內容
4. 點選 Internet Protocol (TCP/IP) 後按下內容
5. 選擇自動取得 IP address 和自動取得 DNS server address
6. 點擊 OK 按鍵結束設定



ADSL2+ Modem/Router

注意

你至少需要 IE5.0 或者 Netscape4.5 以上的網頁瀏覽器才可設定此設備

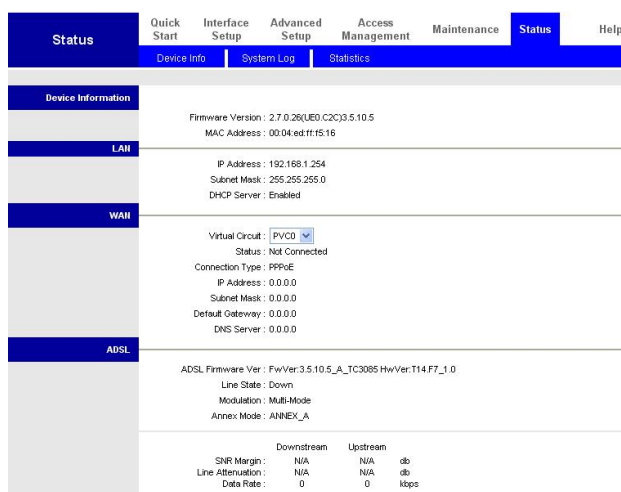
1. 開啓網頁瀏覽器，在網址中輸入 <http://192.168.1.254>。這個 IP 是出廠預設值，按下 Enter。



2. 網頁會提示輸入使用者名稱與密碼。輸入預設值的帳號與密碼(預設值為 admin / admin)後按下 OK，進入主選單如下圖：



3. 主選單首頁

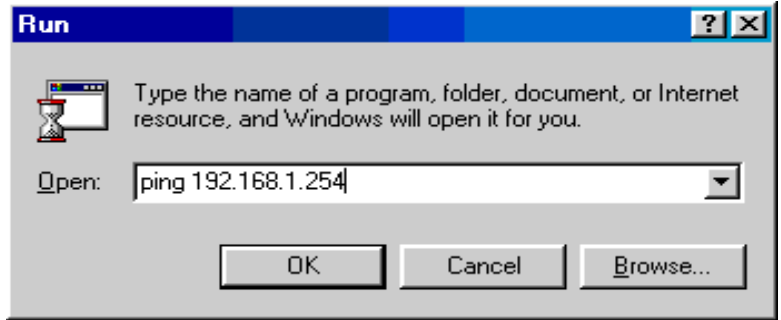


確認 PC 端網路連線

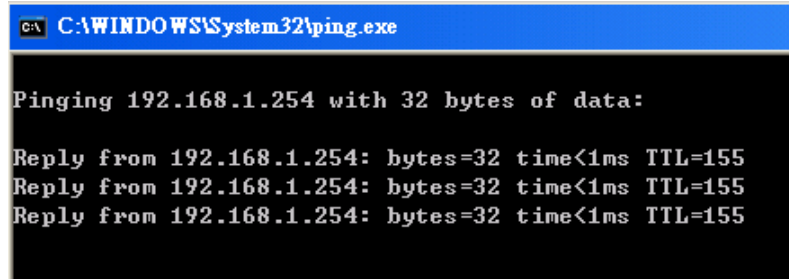
在 Windows OS，點選開始/執行，在執行視窗中輸入：

ping 192.168.1.254

點選 **OK**.



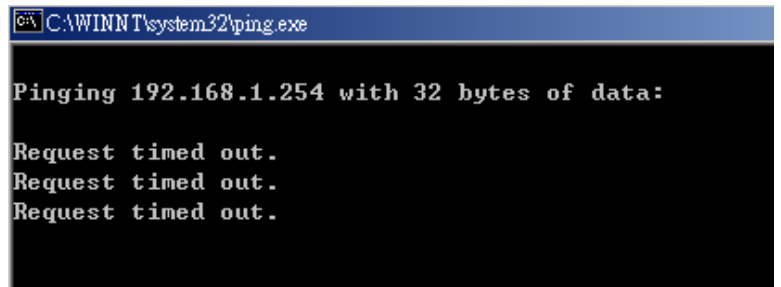
命令提示字元 視窗顯示。如果 ping 指令有成功回應(如圖)，則代表 Router 以正常工作並且可以連線。測試完畢後，視窗會自動關閉。



如過連線失敗，會顯示

Request timed out

請從新確認連線與設定





- D FBR - 1161 ADSL2+
- D
- D / CD - ROM
- D AC - AC (12VAC, 1A)
- D RJ - 11 ADSL/
- D Cat - 5
- D USB

ADSL2+

- *FBR - 1161*
- *FBR - 1161*
- *FBR - 1161*
-

- *FBR - 1161*
-



PC USB

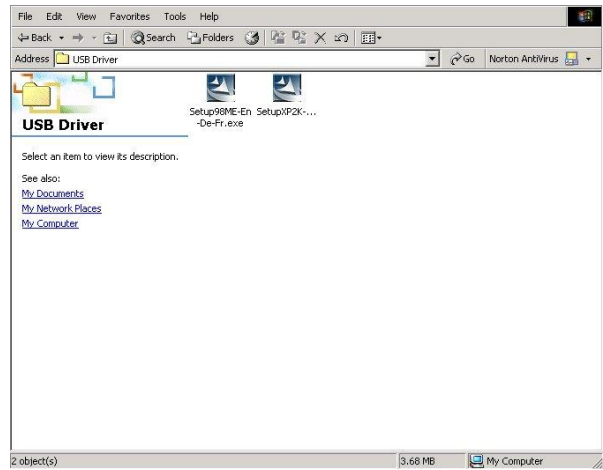
USB
Windows

USB
USB

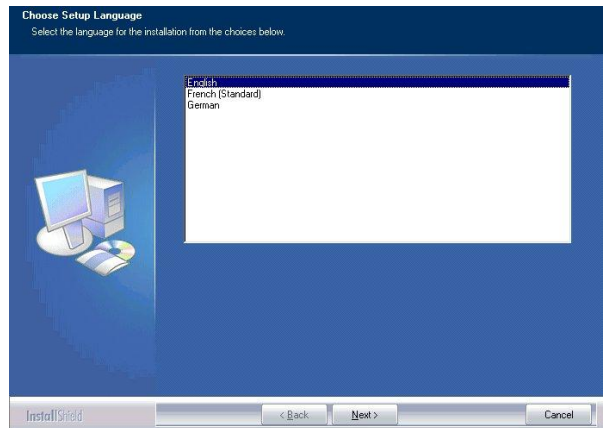
PC

Windows XP 2000 :

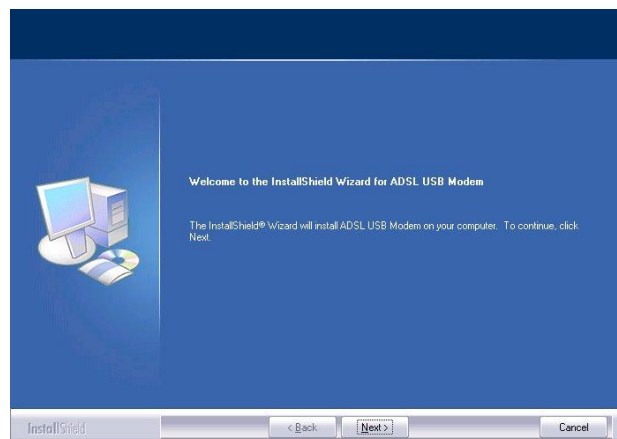
1. Windows
CD - ROM CD
"G: \ USB
Driver\ setupXP2K_En_De_Fi"



2. "Next () >"
(, ,)
3

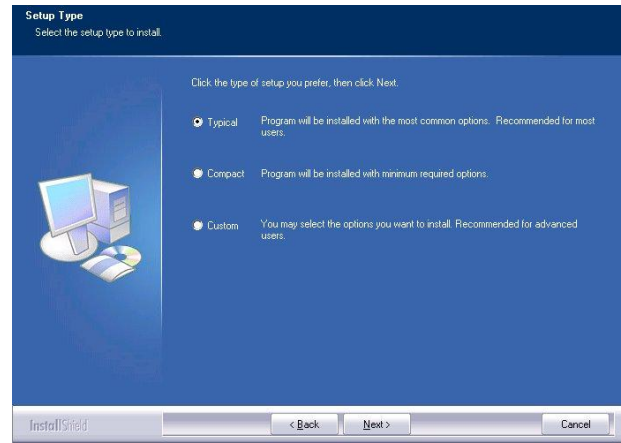


3.



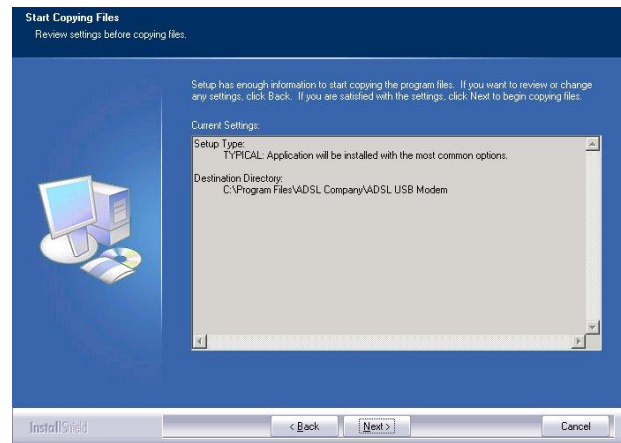
4.
() >"

" Next

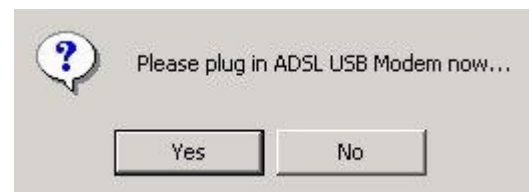


5.
Next () >"

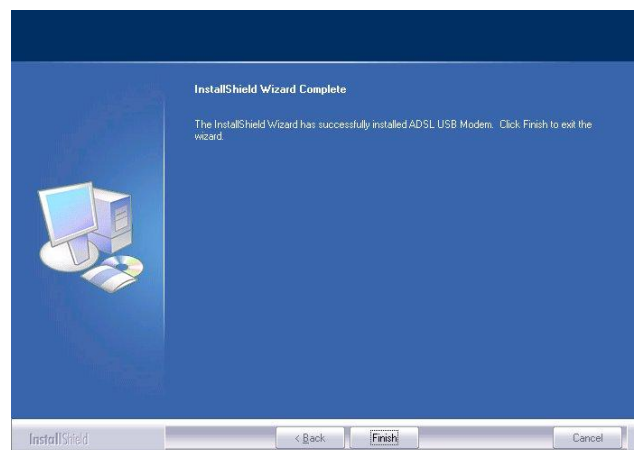
"



6. USB ADSL USB



7. "Finish ()"



8. "Username ()"
 "Password ()"

Please type your user name and password.

Site: 192.168.1.254
 Realm: ADSL Modem/Router
 User Name:
 Password:

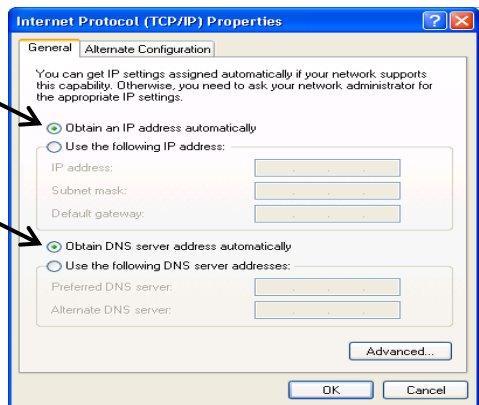
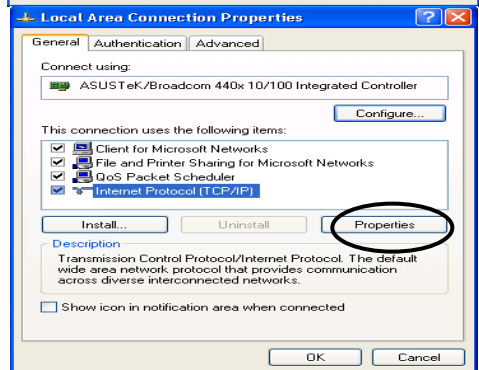
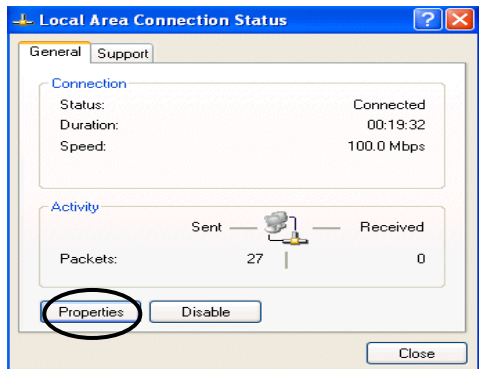
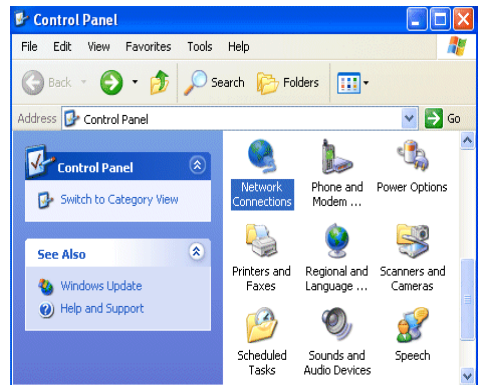
Save this password in your password list

OK Cancel

Status	Quick Start	Interface Setup	Advanced Setup	Access Management	Maintenance	Status	Help
<p>Device Info System Log Statistics</p>							
Device Information	Firmware Version : 2.7.0.26(UE0.C2C)3.5.10.5 MAC Address : 00:04:ed:ff:f5:16						
LAN	IP Address : 192.168.1.254 Subnet Mask : 255.255.255.0 DHCP Server : Enabled						
WAN	Virtual Circuit : PVC0 Status : Not Connected Connection Type : PPPoE IP Address : 0.0.0.0 Subnet Mask : 0.0.0.0 Default Gateway : 0.0.0.0 DNS Server : 0.0.0.0						
ADSL	ADSL Firmware Ver : FwVer:3.5.10.5_A_TC3085 HwVer:T14.F7_1.0 Line State : Down Modulation : Multi-Mode Annex Mode : ANNEX_A						
			Downstream	Upstream			
			SNR Margin :	N/A	N/A	db	
			Line Attenuation :	N/A	N/A	db	
			Data Rate :	0	0	kbps	

Windows XP PC

1. Start () > Control Panel () ()
Network Connection ()
2. Local Area Connection ()
3. Local Area Connection Status ()
Properties ()
4. Internet Protocol (TCP/IP)
5. Obtain an IP address automatically ()
Obtain DNS server address automatically ()
DNS
6. OK ()



ADSL2+ /

IE 5.0/Netscape 4.5

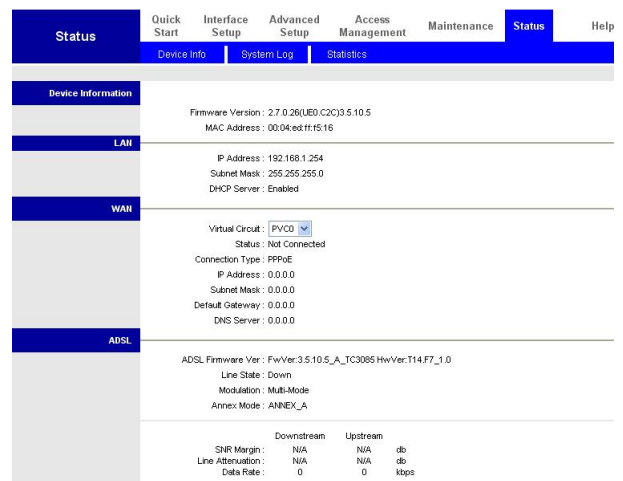
1. <http://192.168.1.254>
IP
<Enter () >



2. admin admin

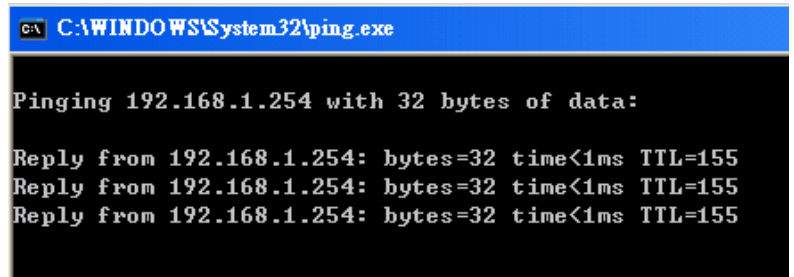
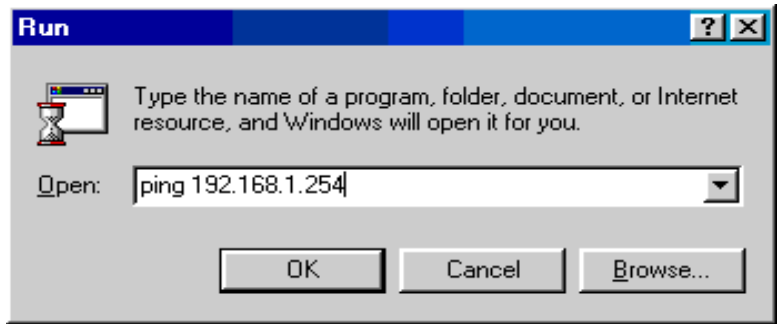


- 3.

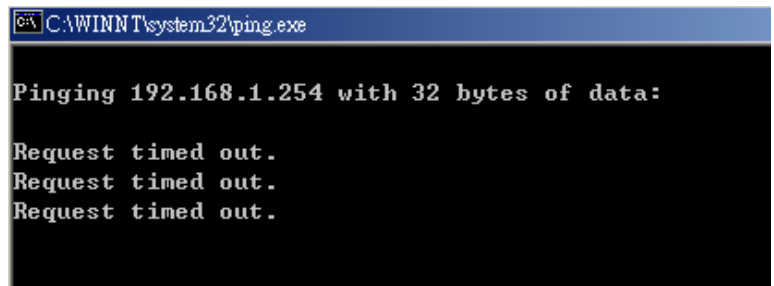




ADSL
Start/Run
(/)
"ping
192.168.1.254



timed out:
"Request





- D FBR-1161 ADSL2+
- D
- D CD-ROM(/)
- D AC-AC (12VAC 1A)
- D RJ-11 ADSL/
- D Cat.5
- D USB

ADSL2+

õ *FBR-1161*

õ *FBR-1161*

õ *FBR-1161*

õ

õ *FBR-1161*

õ



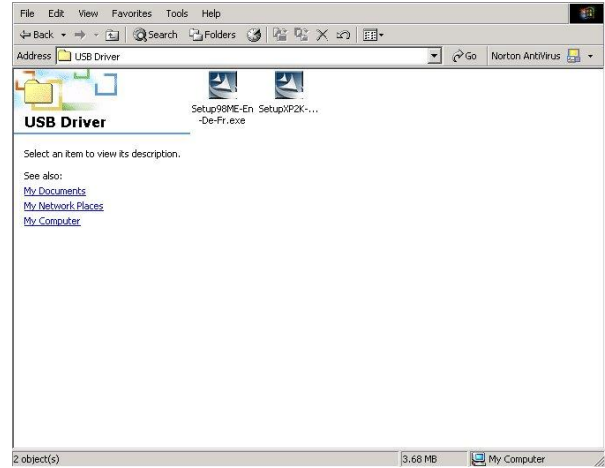
PC USB

USB
Windows

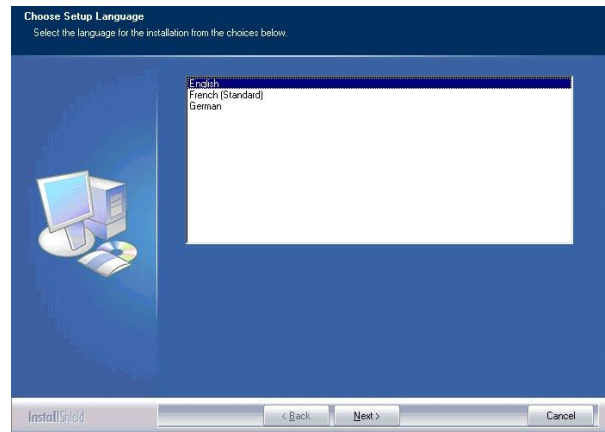
PC USB
USB

Windows XP & 2000

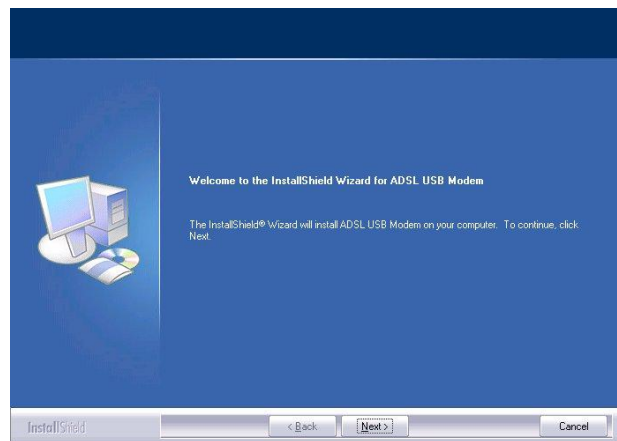
- Windows CD
CD-ROM
G: USB Driver setupXP2K_En_De_Fi



- Next >()
() 3

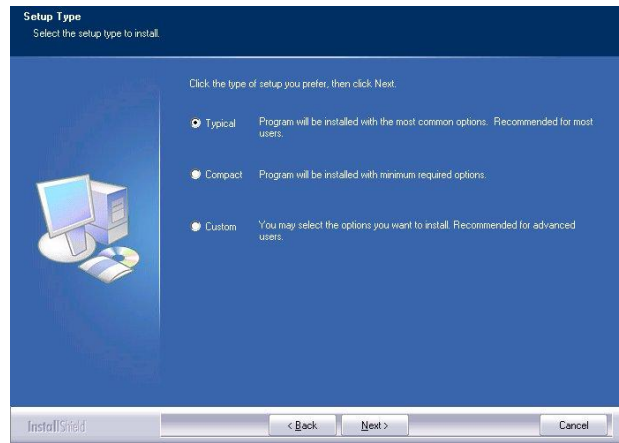


-

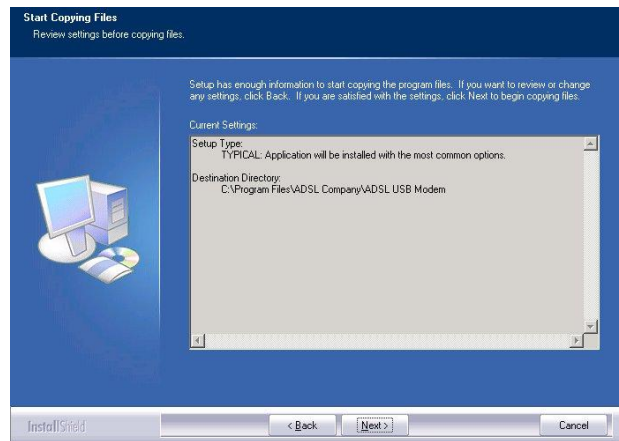




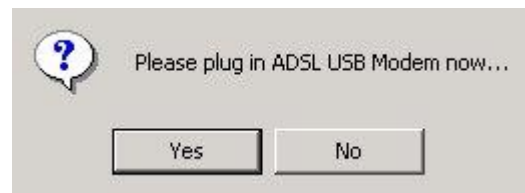
4.
Next >()



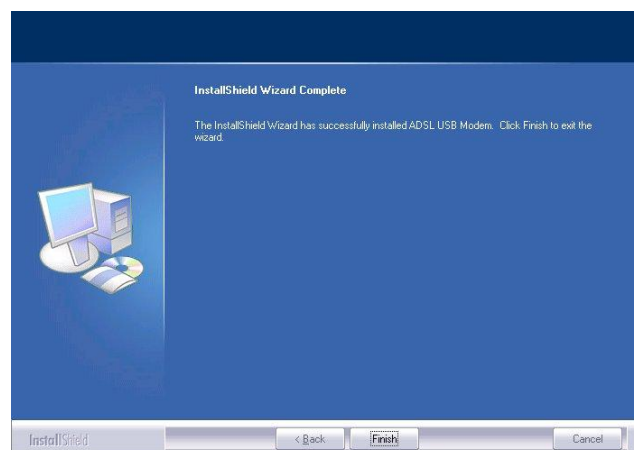
5.
Next >()



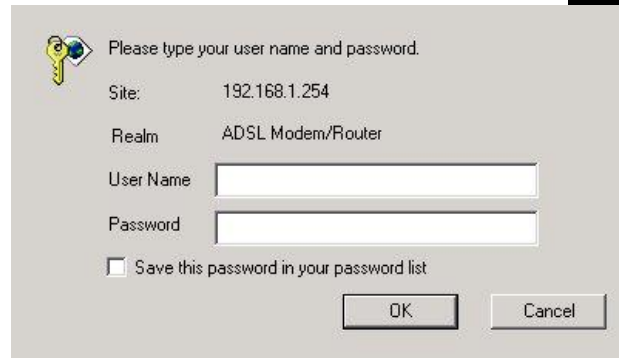
6. USB ADSL USB



7. Finish()



8. Username () Password () Web



Please type your user name and password.

Site: 192.168.1.254
 Realm: ADSL Modem/Router

User Name:
 Password:

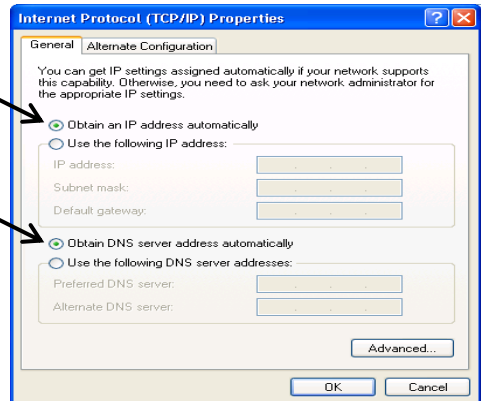
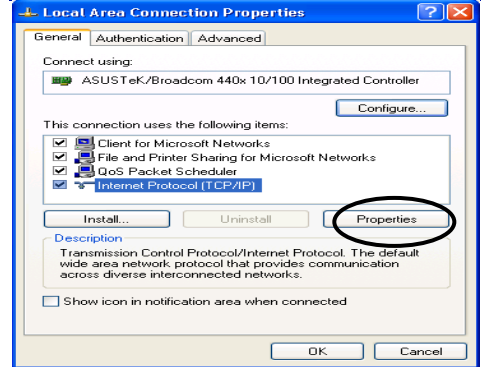
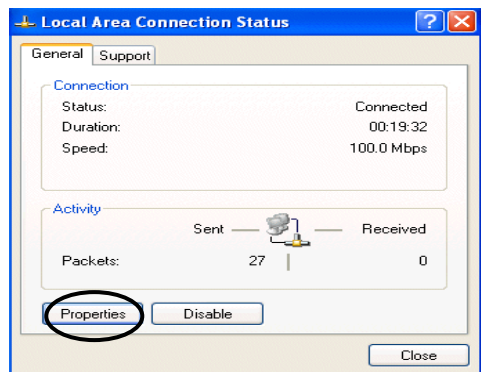
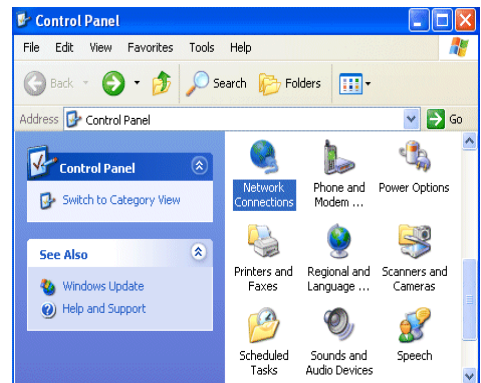
Save this password in your password list

OK Cancel

Status	Quick Start	Interface Setup	Advanced Setup	Access Management	Maintenance	Status	Help
	Device Info	System Log	Statistics				
Device Information	Firmware Version : 2.7.0.26(UE0.C2C)3.5.10.5 MAC Address : 00:04:ed:ff:f5:16						
LAN	IP Address : 192.168.1.254 Subnet Mask : 255.255.255.0 DHCP Server : Enabled						
WAN	Virtual Circuit : PVC0 Status : Not Connected Connection Type : PPPoE IP Address : 0.0.0.0 Subnet Mask : 0.0.0.0 Default Gateway : 0.0.0.0 DNS Server : 0.0.0.0						
ADSL	ADSL Firmware Ver : FwVer:3.5.10.5_A_TC3085 HwVer:T14.F7_1.0 Line State : Down Modulation : Multi-Mode Annex Mode : ANNEX_A						
		Downstream	Upstream				
	SNR Margin :	N/A	N/A	db			
	Line Attenuation :	N/A	N/A	db			
	Data Rate :	0	0	kbps			

Windows XP PC

1. Start () / Control Panel ()
 Network Connections()
2. Local Area Connection()
3. Local Area Connection Status()
 Properties()
4. Internet Protocol()
 (TCP/IP) Properties()
5. Obtain an IP address automatically
) Obtain DNS server
 address automatically
)
6. OK



ADSL2+ /

IE 5.0 / Netscape 4.5

1. Web

<http://192.168.1.254/>

IP

(Enter)



2.

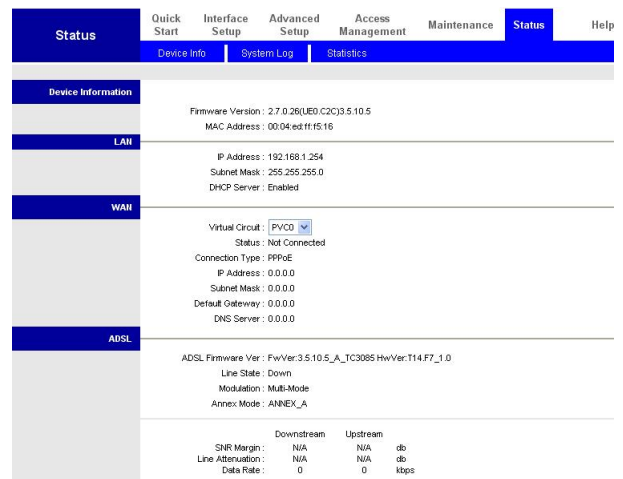
admin

OK

admin



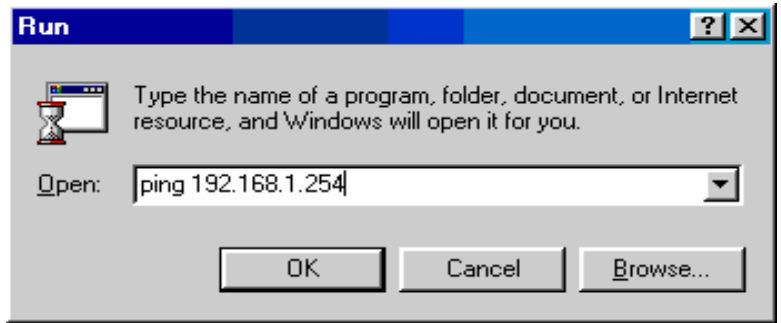
3. Web



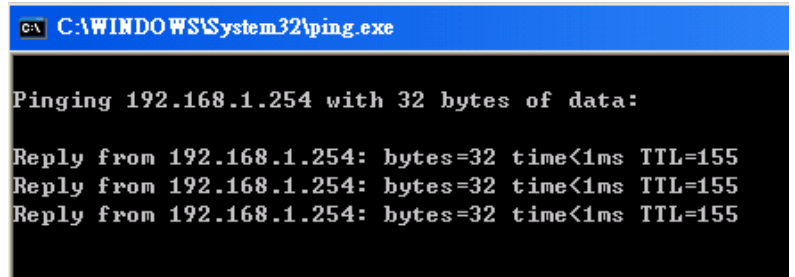


ADSL

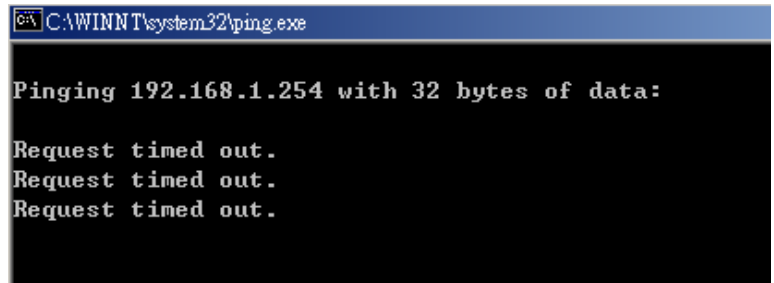
(Start)
 (Run)
 [
] ping 192.168.1.254
 OK



ping



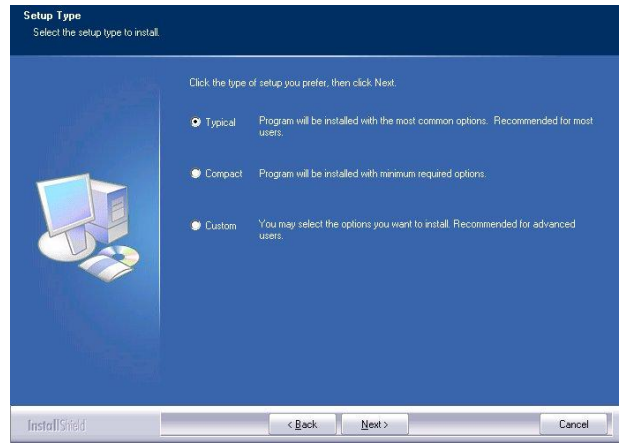
out(
 Request timed
)



4.

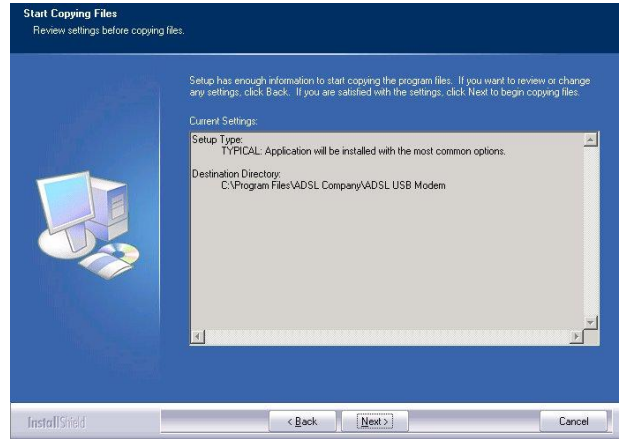
Á Á

Á °



5.

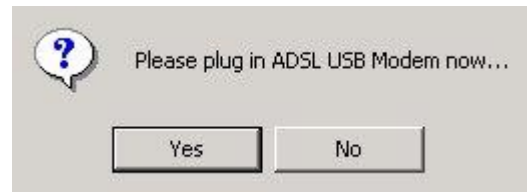
Á Á Á Á
Á ° Þ ^ ç c Á N ø Á Ç



6.
ADSL-

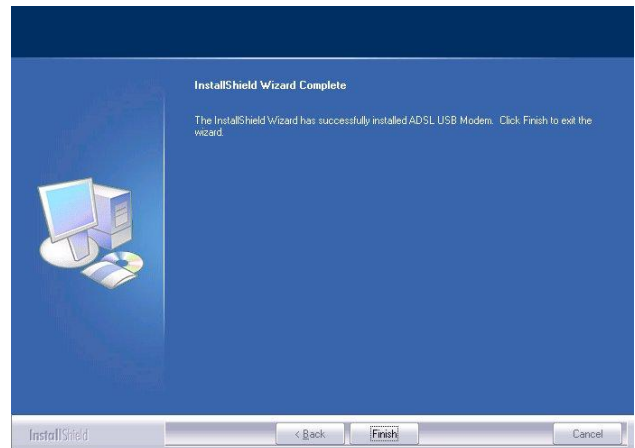
Ê Á Á

Á W



7.

Á ° ø ã } ã • @ø Á Ç



8.

° Ú æ • • , [! á ø Á Ç
 - Á Á Á

Please type your user name and password.

Site: 192.168.1.254

Realm: ADSL Modem/Router

User Name:

Password:

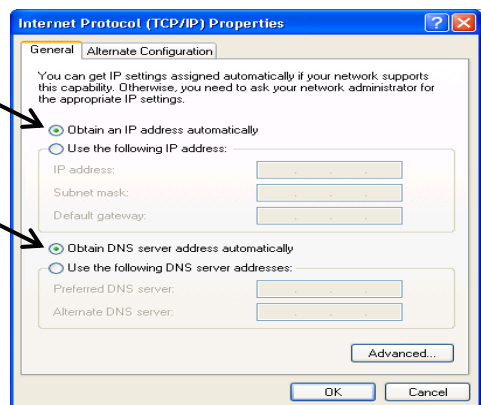
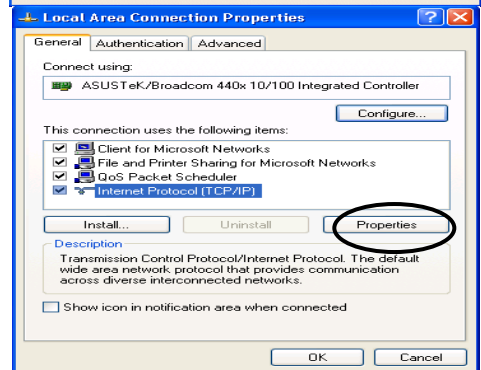
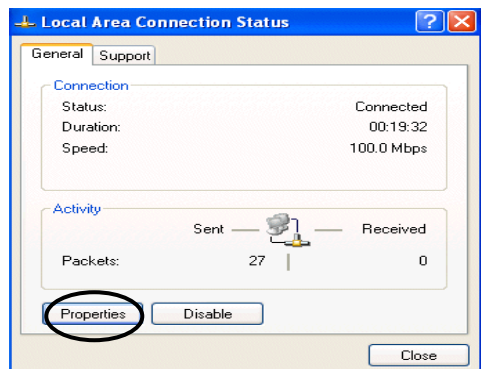
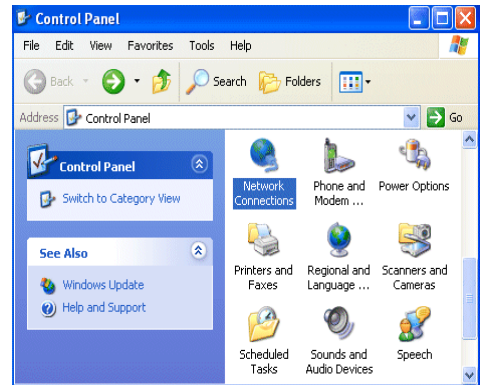
Save this password in your password list

OK Cancel

Á

Status	Quick Start	Interface Setup	Advanced Setup	Access Management	Maintenance	Status	Help
	Device Info	System Log	Statistics				
Device Information	Firmware Version : 2.7.0.26(UE0.C2C)3.5.10.5 MAC Address : 00:04:ed:ff:f5:16						
LAN	IP Address : 192.168.1.254 Subnet Mask : 255.255.255.0 DHCP Server : Enabled						
WAN	Virtual Circuit : PVC0 Status : Not Connected Connection Type : PPPoE IP Address : 0.0.0.0 Subnet Mask : 0.0.0.0 Default Gateway : 0.0.0.0 DNS Server : 0.0.0.0						
ADSL	ADSL Firmware Ver : FwVer:3.5.10.5_A_TC3085 HwVer:T14.F7_1.0 Line State : Down Modulation : Multi-Mode Annex Mode : ANNEX_A						
		Downstream	Upstream				
	SNR Margin :	N/A	N/A	db			
	Line Attenuation :	N/A	N/A	db			
	Data Rate :	0	0	kbps			

1. «Start» () , «Control Panel» () fl «Network Connections» ().
2. «Local Area Connection» ().
3. «Local Area Connection Status» () «Properties» ().
4. «Local Area Connection Properties» () «Properties» ().
5. «Obtain an IP address automatically» () «Obtain DNS server address automatically» ().
6. «OK».



BYhgWUdY (")

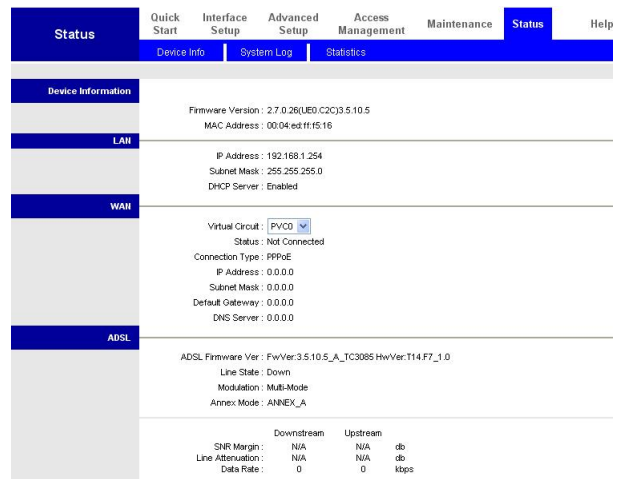
1. <http://192.168.1.254>
Enter » fl



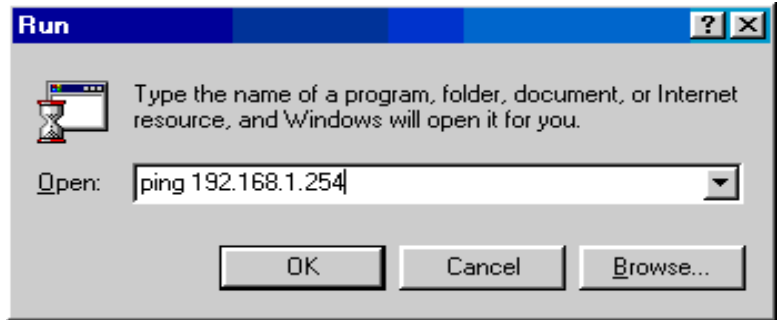
2. Enter Network Password dialog box with fields for Site (192.168.1.254), Realm (ADSL Modem/Router), User Name (admin), and Password (password).
OKÁ



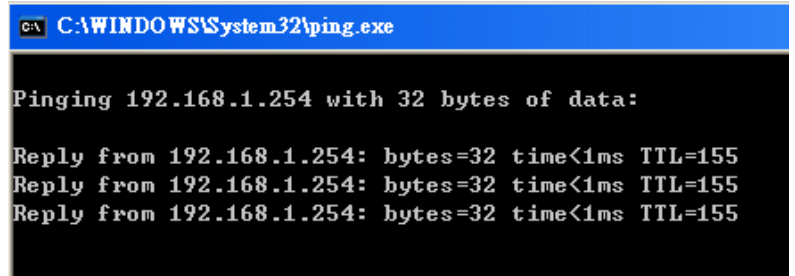
3. -



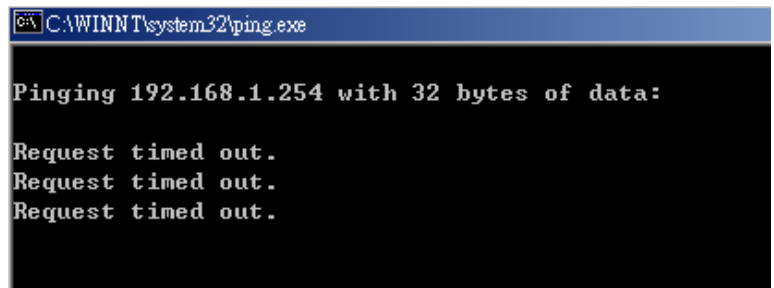
(St rt) (Run)
 ADSL-
 «ping 192.168.1.254»
 «OK».



(Run) (St rt)
 ADSL-
 «ping 192.168.1.254»
 «OK».



«Request timed out»
 (





Package Contents

- D FBR-1161 ADSL2+ Modem Router
- D
- D CD-ROM
- D AC-AC (12VAC, 1A)
- D RJ-11 ADSL/
- D Cat.5
- D USB

Router

ADSL2+ Modem

• *FBR-1161*

• *FBR-1161*

• *FBR-1161*

•

• *FBR-1161*

•

USB

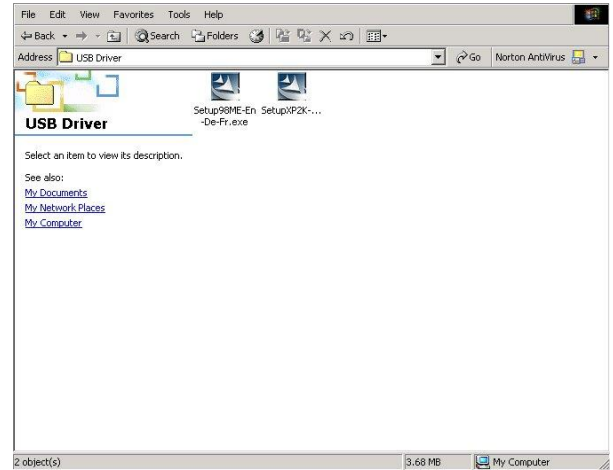
Windows

USB

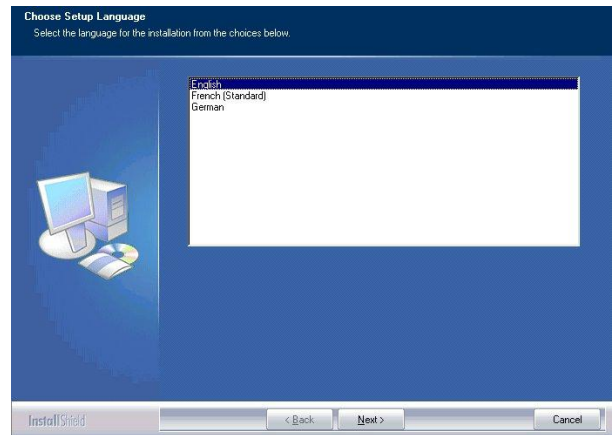
USB
USB

Windows XP & 2000

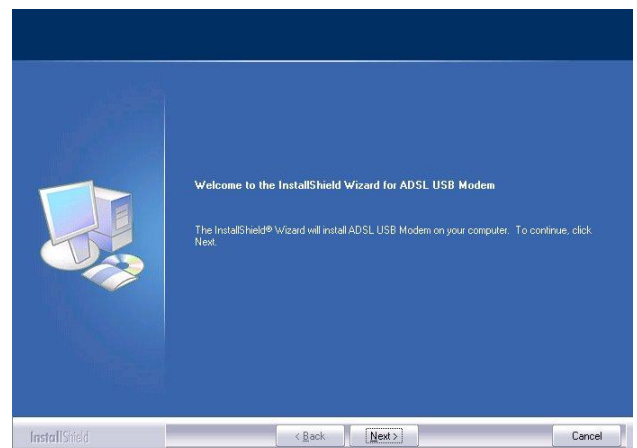
1. Windows CD
CD-ROM
; \USB
Driver\g Y h i d L D & ? S 9 b S 8 Y S :] ^



2. ^ ^ 2 ^
()

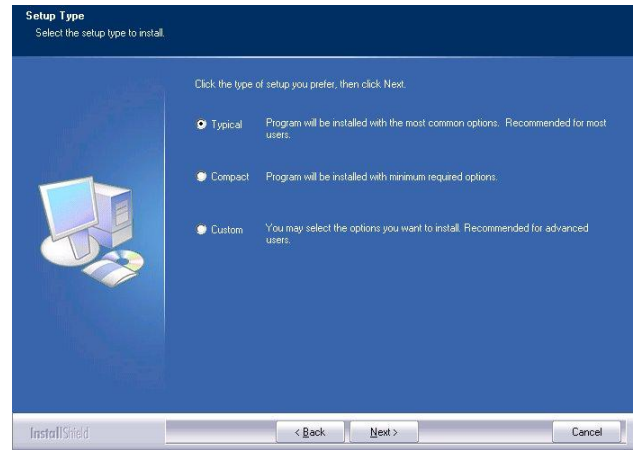


- 3.



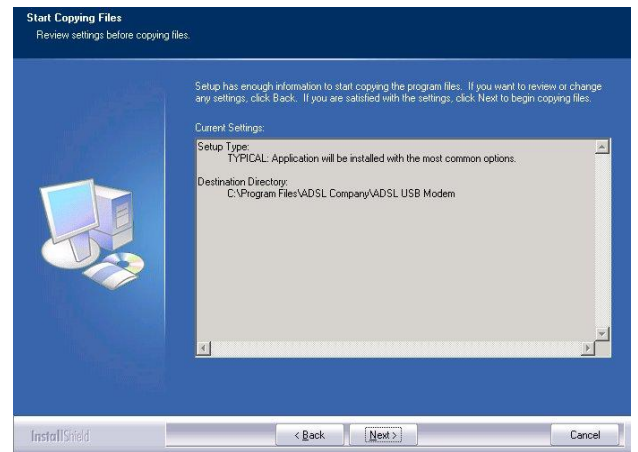
4.

>



5.

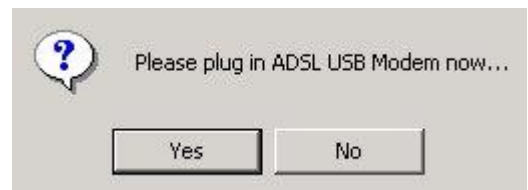
>



6.

'USB

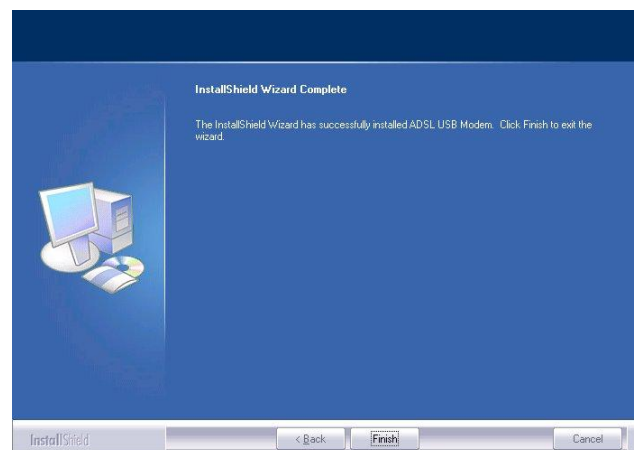
'ADSL USB



7.

↑

↑



8.

Please type your user name and password.

Site: 192.168.1.254

Realm: ADSL Modem/Router

User Name:

Password:

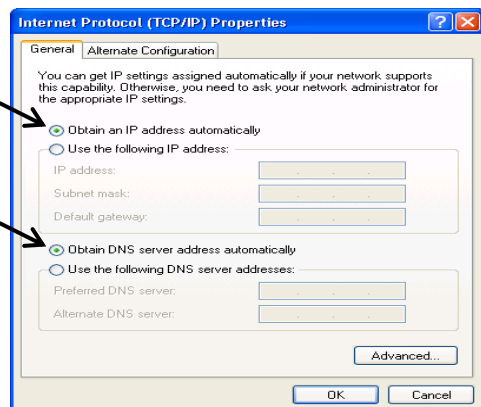
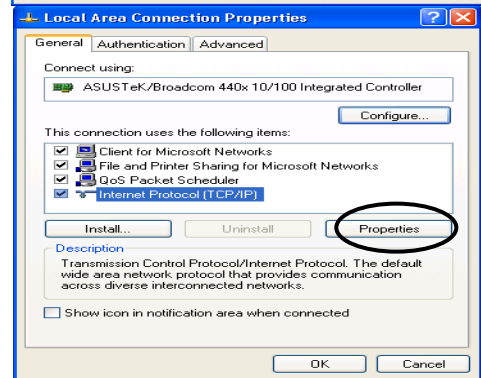
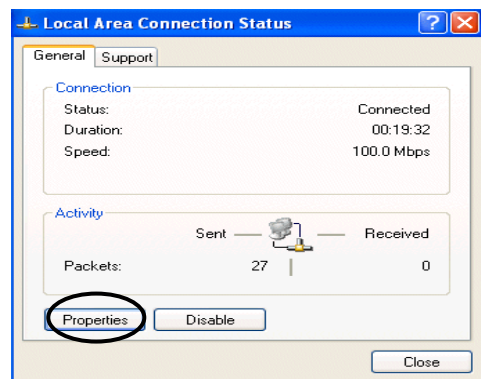
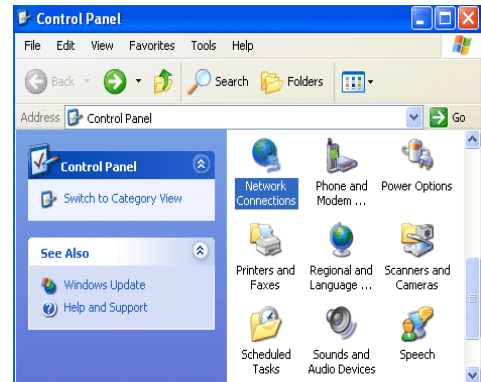
Save this password in your password list

OK Cancel

Status	Quick Start	Interface Setup	Advanced Setup	Access Management	Maintenance	Status	Help
	Device Info	System Log	Statistics				
Device Information	Firmware Version : 2.7.0.26(UE0.C2C)3.5.10.5 MAC Address : 00:04:ed:ff:f5:16						
LAN	IP Address : 192.168.1.254 Subnet Mask : 255.255.255.0 DHCP Server : Enabled						
WAN	Virtual Circuit : PVC0 Status : Not Connected Connection Type : PPPoE IP Address : 0.0.0.0 Subnet Mask : 0.0.0.0 Default Gateway : 0.0.0.0 DNS Server : 0.0.0.0						
ADSL	ADSL Firmware Ver : FwVer:3.5.10.5_A_TC3085 HwVer:T14.F7_1.0 Line State : Down Modulation : Multi-Mode Annex Mode : ANNEX_A						
			Downstream	Upstream			
	SNR Margin :	N/A	N/A	db			
	Line Attenuation :	N/A	N/A	db			
	Data Rate :	0	0	kbps			

Windows XP

1. Start / Control Panel
() Control Panel
Network Connections
2. Local Area Connection
3. Local Area Connection Status
Properties
4. Internet Protocol (TCP/IP)
Properties
5. Obtain an IP address
automatically Obtain DNS server
address automatically
6. OK



ADSL2+ Modem/Router

IE 5.0 / Netscape 4.5

1. <http://192.168.1.254>

IP

Enter



2.

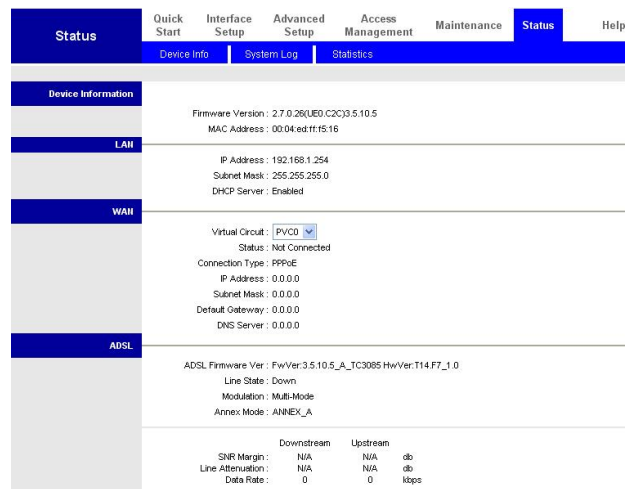
admin

admin

OK

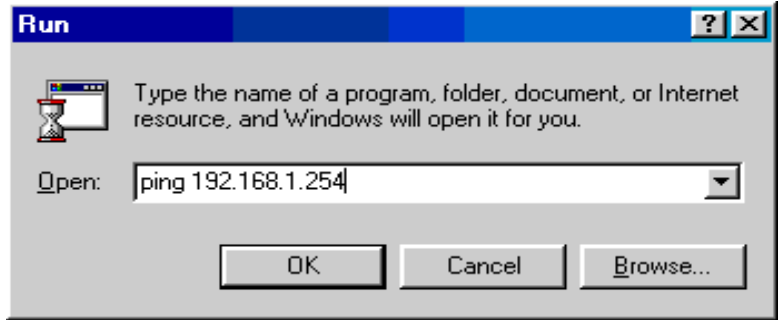


3.

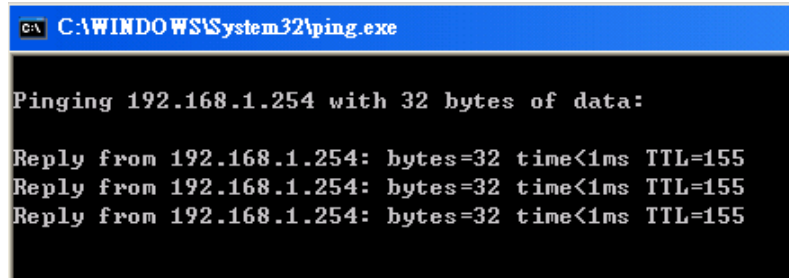




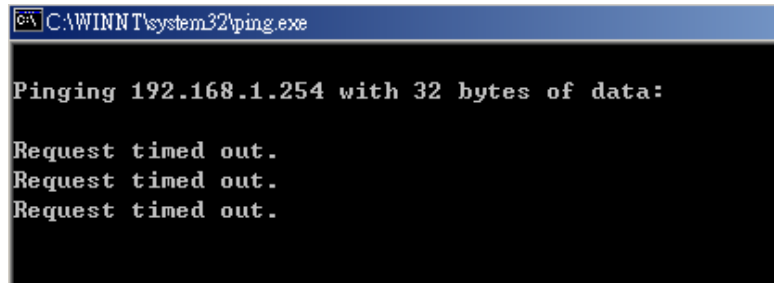
ADSL
 Start / Run
 Run
 [d] b [' % - & " % * , " % OK &

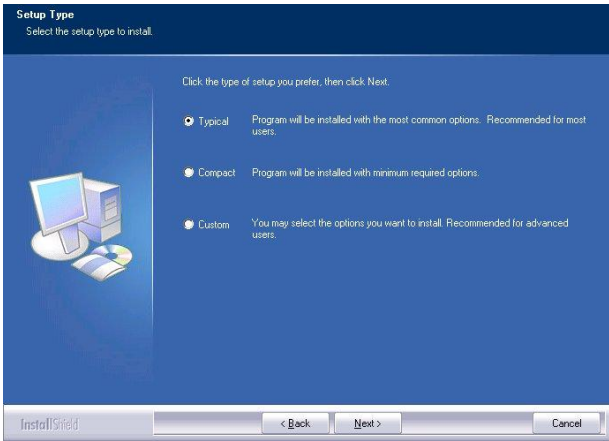


ping

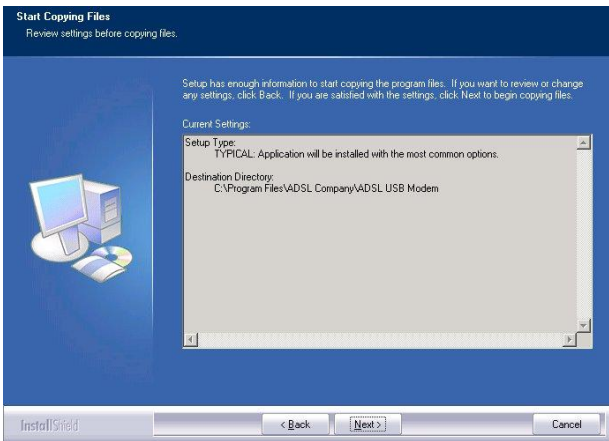


Request
 h] a Y X ' c i h I





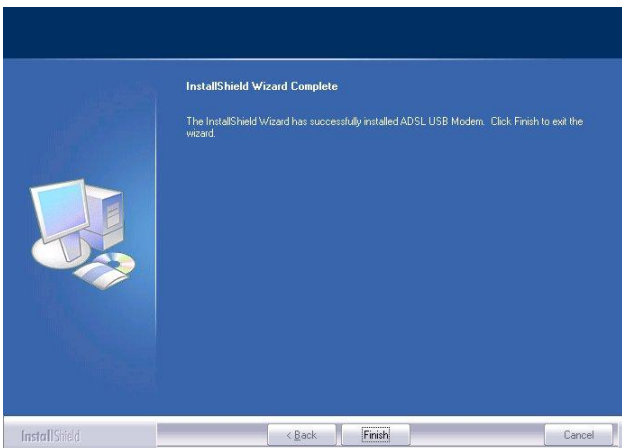
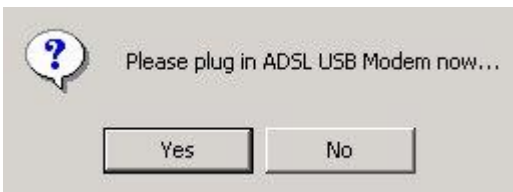
Next > Á Á Á Á Ä4
 Á Á)



Á Á Á Á Á Á Ä5
 Next > Á Á Á Á D



ADSL USBÁ ÁUSBÁ Á Ä6



Á)Á%Øã }Áã • @+Á Ä7



 Please type your user name and password.

Site: 192.168.1.254

Realm: ADSL Modem/Router

User Name:

Password:

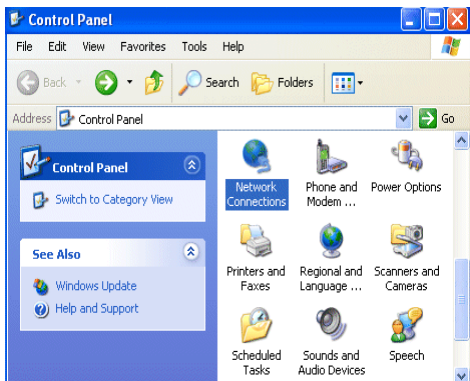
Save this password in your password list

Á D%Ú æ • • , ÁÇ ! á + D%W • Á ! } æ }
 Æ Á Á Á ÁÇ

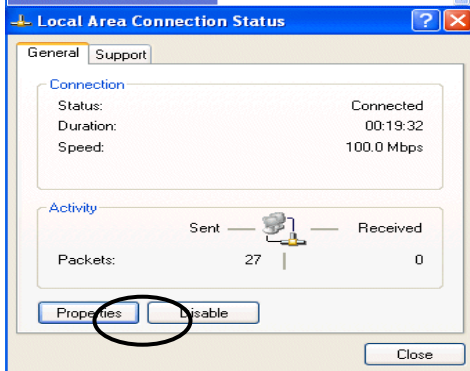
Á Á

Status	Quick Start	Interface Setup	Advanced Setup	Access Management	Maintenance	Status	Help
<div style="display: flex; justify-content: space-between;"> Device Info System Log Statistics </div>							
Device Information	Firmware Version : 2.7.0.26(UE0.C2C)3.5.10.5 MAC Address : 00:04:ed:ff:f5:16						
LAN	IP Address : 192.168.1.254 Subnet Mask : 255.255.255.0 DHCP Server : Enabled						
WAN	Virtual Circuit : <input type="text" value="PVCD"/> Status : Not Connected Connection Type : PPPoE IP Address : 0.0.0.0 Subnet Mask : 0.0.0.0 Default Gateway : 0.0.0.0 DNS Server : 0.0.0.0						
ADSL	ADSL Firmware Ver : FwVer:3.5.10.5_A_TC3085 HwVer:T14.F7_1.0 Line State : Down Modulation : Multi-Mode Annex Mode : ANNEX_A						
			Downstream	Upstream			
			SNR Margin :	N/A	N/A	db	
			Line Attenuation :	N/A	N/A	db	
			Data Rate :	0	0	kbps	

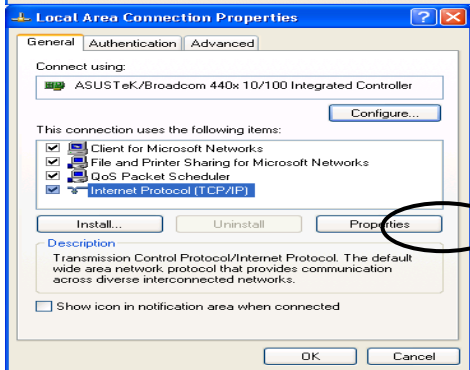
Windows XP



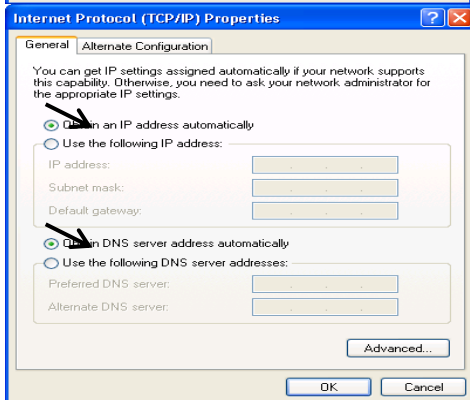
Control Panel Start
 Control Panel Network Connections
 Local Area Connection



Local Area Connection Status Properties



Internet Protocol (TCP/IP) Properties



Obtain an IP address automatically
 Obtain DNS server address automatically

ADSL2+

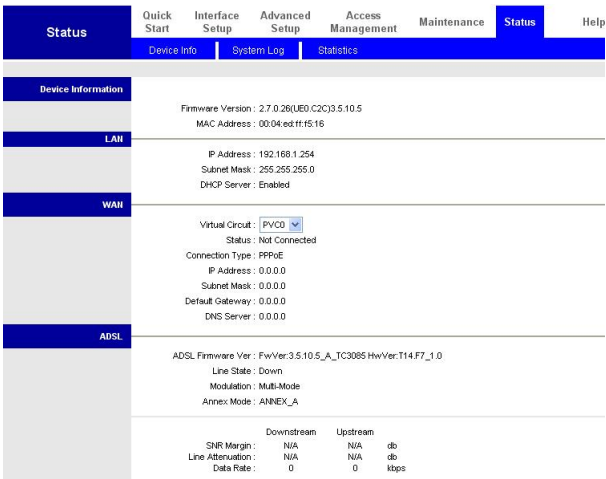
" IE 5.0 " Netscape 4.5 "



Á <http://192.168.1.254> Á Á Ä1
ÁPÁ Á È Á ÄÄ
È)ÁEnterÁ Á È Á



· È Á Á Ä2
Á Á È Á Á ÄminÁ ·
È Á)ÁOKÁ ÁÈ Áadmin



È Á Á Ä3

