



DOH-1100 Heavy-Duty Outdoor Domed Housing

Quick Installation Guide

CHECK YOUR PACKAGE CONTENTS

The carton should contain the following items:

- DOH-1100
- Power Adapter
- Wall Mount Kit

If any item is found missing or damaged, please contact your local reseller for replacement.

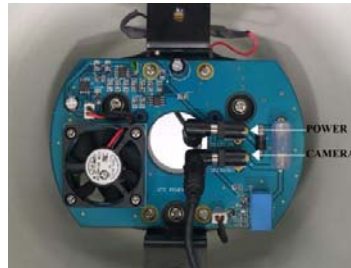
GENERAL FEATURE

- Heavy-duty aluminum dome for outdoor and indoor installation
- 2-layer dome design keeps cameras cool
- Special fluorocarbon coating resists harsh acids and bases (i.e. salt water)
- Built-in fan and heater for operation in diverse environments
- Vandal-proof polycarbonate cover
- IP-66 rated protection level

INSTALLATION

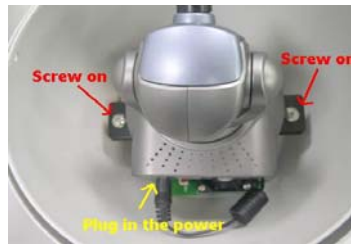
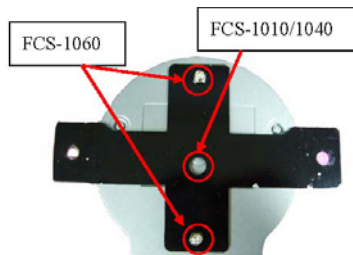
Step 1: Get the power wire through the bracket first.

Step 2: Insert the power cable and camera separately to the socket.



Step 3: Screw the camera on the mounting kit.

Step 4: Screw on the two side screws, and plug in the power to the IP camera.



Step 5: Place the cover and the installation is finished.

