



LevelOne

User Manual

VDS-0110 / VDS-0111

Ethernet over VDSL2 Converter (Sender)

Ethernet over VDSL2 Converter (Receiver)

V1.0

FCC Certifications

This Equipment has been tested and found to comply with the limits for a Class A digital device, pursuant to part 15 of the FCC Rules. These limits are designed to provide reasonable protection against harmful interference when the equipment is operated in a commercial environment. This equipment generates, uses, and can radiate radio frequency energy and, if not installed and used in accordance with the instruction manual, may cause harmful interference to radio communications.

Operation of this equipment in a residential area is likely to cause harmful interference in which case the user will be required to correct the interference at his own expense.

This device complies with Part 15 of the FCC Rules. Operation is subject to the following two conditions: (1) this device may not cause harmful interference, and (2) this device must accept any interference received; including interference that may cause undesired operation.

CE Mark Warning

This equipment complies with the requirements relating to electromagnetic compatibility, EN 55022 Class A for ITE, the essential protection requirement of Council Directive 89/336/EEC on the approximation of the laws of the Member States relating to electromagnetic compatibility.

Company has an on-going policy of upgrading its products and it may be possible that information in this document is not up-to-date. Please check with your local distributors for the latest information. No part of this document can be copied or reproduced in any form without written consent from the company.



Table of Content

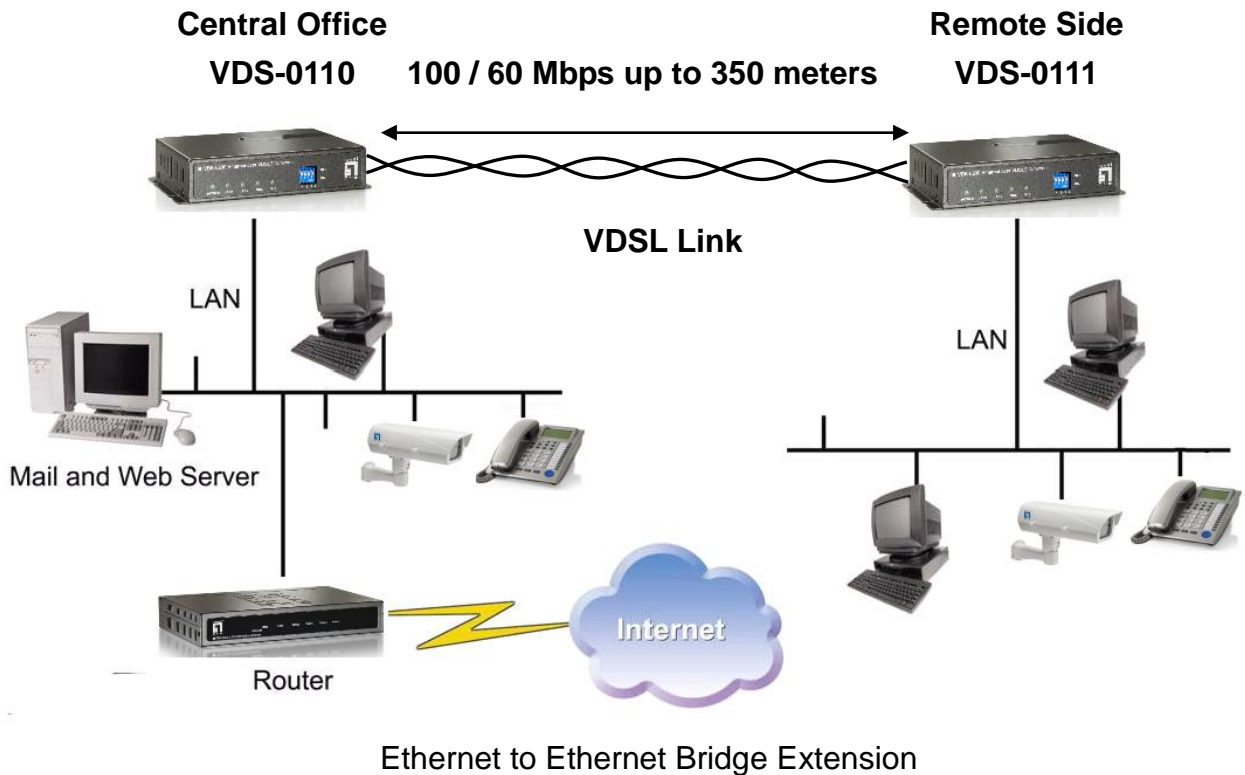
1. INTRODUCTIONS.....	4
2. APPLICATION NOTES	4
3. FEATURES	5
4. PACKING CONTENTS.....	5
5. LED INDICATORS	6
6. DIP SWITCHES SETTINGS.....	7
7. DATA RATES & DISTANCES.....	9
8. TECHNICAL SUPPORT.....	10

1. Introductions

The VDS-0110 and VDS-0111, a line power pair of VDSL2 (Very high-bit-rate Digital Subscriber Line) converter, provides a broadband transmission up to 100/60Mbps of downstream/upstream data rate over single pair copper line for point-to-point Ethernet connectivity. With 100/60Mbps data rate, VDS-0110/VDS-0111 supports transmission distance up to 350 meters for line power connection. The line power is supplied from the VDS-0110 to VDS-0111 and conforms to the Safety-Extra-Low-Voltage (SELV) standards.

With plug and play features and minimum installation time, VDS-0110 is always configured as master mode for central side, and VDS-0111 as slave mode for remote side. The VDS-0110/VDS-0111 conforms to the ITU-T G.993.1 and G.993.2 to meet VDSL/VDSL2 and SG15Q4 DMT for network requirements. A pair of VDS-0110/VDS-0111 offers a cost effective line power solution for bandwidth-hungry applications such as LAN-to-LAN connectivity, Video Streaming, FTTB, and MDU/MTU over single twisted pair telephone line.

2. Application Notes



3. Features

- ITU-T G.993.1, G.993.2 VDSL/VDSL2 and SG15Q4 DMT Compliance
- 100/60Mbps DownStream/UpStream for distance up to 350 meters
- Supports Line Powered VDSL2 connection
- Conforms Safety-Extra-Low-Voltage (SELV) standard
- RJ11 for DSL interfaces + RJ45 for Ethernet LAN port
- 5 LED Indicators for VDS-0110(Master)
- 4 LED indicators for VDS-0111(Slave)
- 4 Dip Switches for Configuration Settings
- Trellis Coding support up to 1024 Discrete Multi-Tone (DMT) bins
- Auto MDIX for 10/100 BaseT Ethernet LAN Ports
- Low-Latency for Video/Voice/Data applications
- Line Surge Protection
- Selectable Fast and Interleaved modes
 - Fast mode guarantees a minimum end to end latency less than 1 ms.
 - Interleaved mode provides impulse noises protection for any impulse noise with a duration less than 250 us. Interleaved mode has a maximum end to end latency of 10 ms. Interleaved mode is the default mode.
- Selectable fixed data rate and fixed SNR margin
 - User may select fixed SNR margin (9 dB) or fixed target data rate.
 - When fixed SNR margin is selected, the systems will maintain the SNR margin at 9 dB across all available loop length.
 - When fixed target data rate is selected, the system will lock the data rate at 50/20Mbps whenever the calculated SNR margin is higher than 9 dB. This will result in the best system stability and is the default mode.

4. Packing Contents

Inside the package you should find:

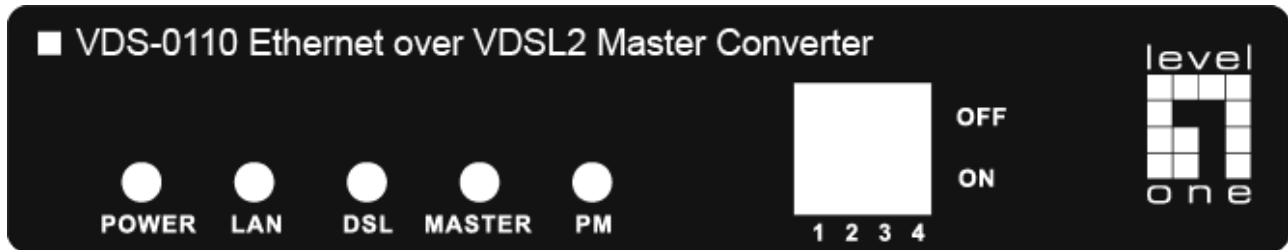
- VDSL2 Converter
- Power Adaptor (DC12V/2.5A) for VDS-0110
- User's Manual CD
- Telephone line

Please check if the packing is damaged or any component is missing. If so, please contact your distributor.

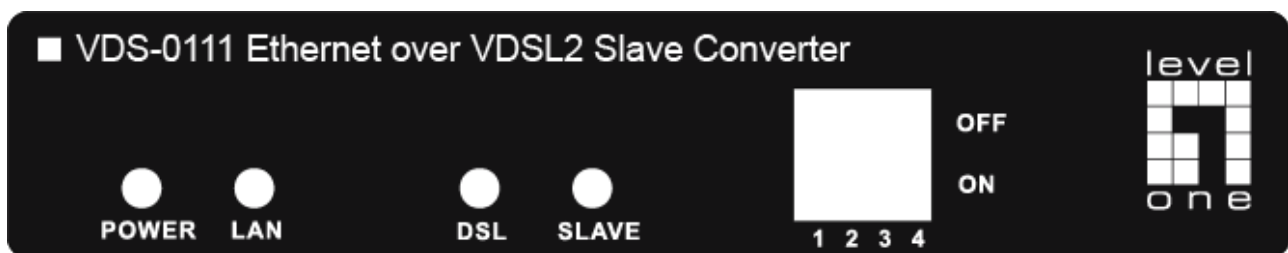
5. LED Indicators

On the front panel of VDS-0110/VDS-0111, there are 5 LED indicators as the following

■ VDS-0110 Front Panel



■ VDS-0111 Front Panel

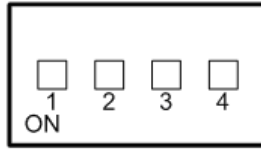


■ VDS-0110 Rear Panel/ VDS-0111 not Power Jack

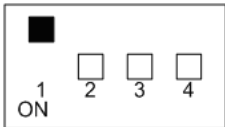


POWER	Green On	Indicates power is on and normal
LAN1	Green On	Indicates Ethernet LAN1 port is in connection
	Flashing	Indicates Ethernet LAN1 data activities
LAN2	Green On	Indicates Ethernet LAN1 port is in connection
	Flashing	Indicates Ethernet LAN1 data activities
Master	Green On	Indicates VDS-0110 is always set as Master (VTU-C) mode.
Slave	Green On	Indicates VDS-0111 is always set as Slave (VTU-R) mode.
PM	Green On	Indicates VDS-0110 is providing line power to VDS-0111.
	OFF	Indicates VDS-0110 line power is OFF.

6. Dip Switches Settings



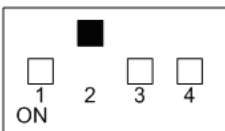
	Pin 1	Pin 2	Pin 3	Pin 4
	VTU-C/R	Mode	Rate Limit	SNR
OFF	VTU-C	Interleaved	50/20 Mbps	9dB
ON	VTU-R	Fast	Full Rate	6dB



Pin 1: VTU-C/R Switch

VTU-C: The VDS-0110 converter will act as at the Central Office (CO) side.

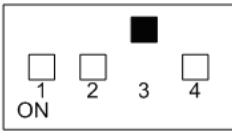
VTU-R: The VDS-0111 converter will act as at the Customer Premise Equipment (CPE) or Remote side.



Pin 2: Mode for impulse noise protection

Interleave mode: Protection for up to 250ms impulse noises with latency less than 6 ms.

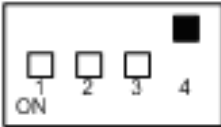
Fast mode: Direct data transmission with latency less than 1ms.



Pin 3: Rate limit control

50/20 Mbps: Line rate limited to 50/20 Mbps.

Full Rate: Provides up to 100Mbps/60Mbps line rate in short line.



Pin 4: Signal to Noise Ratio (SNR)

9dB: Higher SNR margin (9dB) will result in less error with more stable VDSL2 link.

6dB: Original and Normal channel noise protection with 6 dB SNR.

7. Data Rates & Distances

Performance in AWG 26 Line at 6dB with full rate

Down Stream Data Rate (Mbps)	Up Stream Data Rate (Mbps)	Distance (feet)
100	60	500
98	53	1000
90	44	1250

8. Technical Support

Thank you for selecting LevelOne products. LevelOne's website contains the latest user documentation and software updates for LevelOne products.

Please contact LevelOne Technical Support through our website.

World Wide Web

<http://www.level1.com>