

LevelOne
KVM-0206
KVM-0406

2/4 port DVI KVM Switch w/Audio

User's Manual

Introduction

Thank you for purchasing LevelOne KVM-0206/0406, PS/2 DVI KVM Switch with Audio. DVI (Digital Visual Interface). It is widely applied to in flat screen monitor or LCD monitor. The traditional CRT (Cathode Ray Tube) style monitor is used with HDDDB-15 pin connector and its radiation is higher than LCD monitor's. The heavy CRT monitor is replaced by new arrival DVI monitor day after day. At the same time, traditional KVM Switch works with HDDDB-15 pin connector also need be upgraded to DVI KVM Switch.

KVM-0206/0406 is a power free switch box specifically designed for small office home office (SOHO) computer users to control multiple computers without redundant keyboards, monitors, mice and audio. LevelOne DVI KVM Switch supports a wide range of PC hardware and software platforms, which can save your money, time, space and power.

LevelOne DVI KVM Switch with audio is loaded with features such as hot-key, individual push button on the front panel, audio switching and auto scan control. It has complete keyboard and mouse emulation for simultaneous PCs boot-up process.

Features

- 2/4 port PS/2 DVI KVM switch is desktop size design.
- Support Microsoft Intellimouse, Microsoft Intellimouse Explorer, Microsoft Optical Mouse, Logitech Net Mouse... etc.
- Support some proprietary type 4D/5D mice or the mouse driver with special function and even the future new generation mouse which is compatible to Microsoft mouse and supported more user's define keys for special application.
- Work with DOS, Win3.X, Win95/98/98SE/ME/XP/2000/NT, Netware, Unix, Linux.
- Support MAC and Sun Microsystems with DVI interface and USB port (Need to work with USB-PS/2 adapter).
- Hot Plug - add or remove connected PCs for maintenance without powering down the KVM Switch or PCs.
- For applications required mixed analogue / digital operation or multiple video head switching from different PCs connected to this switch.
- Supports DVI flat panels and monitors at resolutions up to 1600 x 1200 @ 60Hz (165MHz) – i.e. the maximum DVI single-link bandwidth.
- No Software Required - easy PC selection via Push Buttons, Hot Keys.
- Auto Scan Mode for monitoring PCs.
- Keyboard status restored when switching PCs.

- LED Display for easy status monitoring
- Buzzer sound for switching port confirmation.

Package Contents

Model No.: KVM-0206 **2 port PS/2 DVI KVM Switch with Audio**
 2 port PS/2 DVI KVM Switch 1 PCS
 with Audio
 User's manual 1 PCS
 DVI KVM Cable 2 PCS

Model No.: KVM-0406 **4 port PS/2 DVI KVM Switch with Audio**
 4 port PS/2 DVI KVM Switch 1 PCS
 with Audio
 User's manual 1 PCS
 DVI KVM Cable 4 PCS

Technical specifications:

Functions	2 port PS/2 DVI KVM Switch with Audio	4 port PS/2 DVI KVM Switch with Audio
PC Port	2	4
Console Port	1	1
Console Audio Port	1	1
PC Audio Port	2 (Shared with PS/2 port)	4 (Shared with PS/2 port)
MAX PC Connections	2	4
LED (PC port and Power)	4	8
PC Port Connector (All Female Type)	PS/2 Keyboard Mini-Din 6 pin (PC99 Purple Color) PS/2 Mouse Mini-Din 6 pin (PC99 Green Color) DVI-I video connector	
Console port connector (All Female Type)	PS/2 Keyboard Mini-Din 6 pin (PC99 Purple Color) PS/2 Mouse Mini-Din 6 pin (PC99 Green Color) DVI-I video connector One 3.5mm Speaker Jack One 3.5mm Microphone Jack	
PC selection	Hot Key / Push Button	
Scan Intervals	8 sec.	
Keyboard Emulation	PS/2	
Mouse Emulation	PS/2	
VGA Resolution	2048X1536 @ 75Hz	
VGA Bandwidth	400 MHz	
DVI Resolution	1600X1200 @ 60Hz	
DVI Bandwidth	165 MHz	
Housing	Metal	
Size	Desktop	Desktop
Weight (g)	999	1165
Dimension (mm)	180(L)X138(W)X44(H)	241(L)X138(W)X44(H)

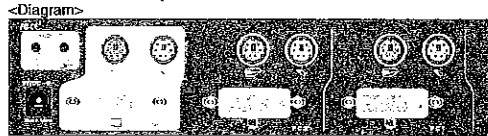
System Requirements Specifications:

Functions	2 port PS/2 DVI KVM Switch with Audio
Console Side	One DVI-I Monitor One PS/2 Keyboard One PS/2 Mouse One 3.5mm Speaker Jack One 3.5mm Microphone Jack
Computer Side	Two 3-in-one (PS/2-PS/2-DVI) to 5-in-one (PS/2-PS/2-Speaker-Microphone-DVI) cables

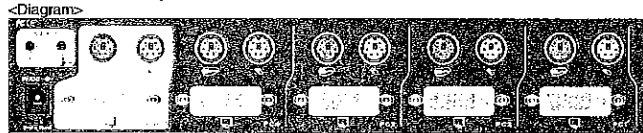
Functions	4 port PS/2 DVI KVM Switch with Audio
Console Side	One DVI-I Monitor One PS/2 Keyboard One PS/2 Mouse One 3.5mm Speaker Jack One 3.5mm Microphone Jack
Computer Side	Four 3-in-one (PS/2-PS/2-DVI) to 5-in-one (PS/2-PS/2-Speaker-Microphone-DVI) cables

Product Details

KVM-0206 2 port PS/2 DVI KVM Switch with Audio



KVM-0406 4 port PS/2 DVI KVM Switch with Audio



Hardware Installation

Before installation, please make sure all of peripherals and computers have been turned off.

1. Connect the one end of 3-in-one to 5-in-one cables to the computer ports of KVM Switch and the other end of cables to the computer.
2. Connect the Keyboard, DVI monitor, Audio and Mouse to the console port of KVM Switch
3. After powering on computers and the boot-up process, you can start to go KVM Switch.

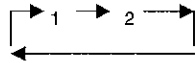
Note:

Please don't switch the PC port (i.e. Don't press the push button of KVM Switch or run hot key) during the boot-up process.

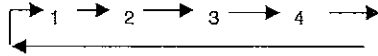
Usage:

The push Button:

Pressing individual button to select respective PC port.
2 port PS/2 DVI KVM Switch with Audio



4 port PS/2 DVI KVM Switch with Audio



There are two LEDs available at each PC port of front panel. One is PC port LED and the other is PC power LED. Power LED is ON or OFF based on the connected PC or empty PC port. Once the PC is powered on, the power LED is lit, otherwise the power LED is off.

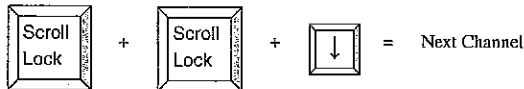
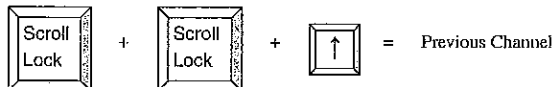
Normally, there is one PC port LED always lit (i.e. the console is linked to this PC port) for one PC port and the other PC or PCs port's LED is off, when you power on KVM switch.
When you select one of two or four PCs and it is shut down, the selected port LED flashed.

Keyboard Hot Key Commands:

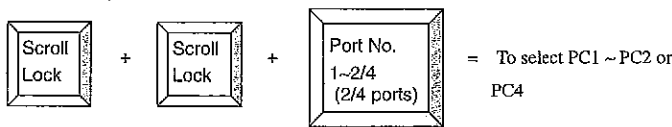
You can also conveniently command DVI KVM to switch ports through simple key sequences. To send commands to DVI KVM switch, the SCROLL LOCK key must be pressed twice within 2 seconds. You will hear a beep for confirmation.

Below are the different Hot Key commands:

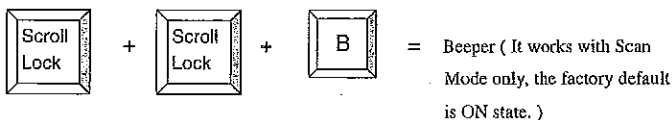
within 2 seconds



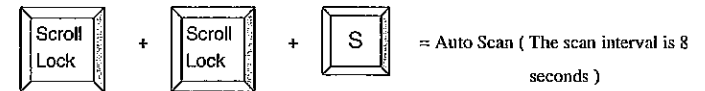
Select PC port:



Beeper Function:



Auto Scan Mode:



To get out of Auto Scan Mode, Press any key or SPACE bar.

Troubleshooting:

Ensure that all cables are well seated. Label all of cables with the number for each respective computer to avoid confusion.

1. KVM switch draws the power from keyboard port of computers. If the computer like laptop computer, notebook computer, or the other computer cannot support enough power to KVM switch, please add a DC 9V, 500mA~1A to the power jack. The power jack polarity is center positive.
2. Don't press any key on the keyboard while booting up the selected computer. Otherwise, it might cause the keyboard error or not detected at PC side.
3. The computer boots up fine, but keyboard doesn't work.
 - Make sure the keyboard works when directly plugged into the computer.
 - Try a different keyboard, but use only 101, 102, or 104-key keyboard.
4. The Mouse is not detected during PC boot up.
 - Make sure the mouse works when directly plugged into the computer.
 - Make sure the mouse is a true PS/2 mouse. A combo mouse will work just as long as it is set for PS/2 mode with the correct adapter.
 - Try a different mouse.
5. Avoiding moving the mouse or pressing the mouse buttons while switching the port.

CERTIFICATIONS:

This equipment has been tested and found to comply with Part 15 of the FCC Rules.

Operation is subject to the following two conditions:

- (1) This device may not cause harmful interference
- (2) This device must accept any interference received. Including interference that may cause undesired operation.

This equipment is in compliance with the requirements of the following regulations: EN 55 022: CLASS B

