



LevelOne

User Manual

FNS-1020

1-Bay Simple Network Storage

Ver. 1.0

Table of Content

1. INTRODUCTION	3
2. UNPACKING AND SETUP	4
FEATURES.....	4
PACKAGE CONTENTS.....	4
3. HARDWARE INSTALLATION.....	5
FRONT VIEW	5
REAR VIEW	7
4. HARDWARE INSTALLATION.....	8
5. CONNECTING THE CABLES	10
6. CHECK YOUR NETWORK SETTINGS (WINDOWS XP / VISTA)	11
7. CONFIGURATION INTERFACE	14
UTILITY METHOD	14
WEB BROWSER METHOD.....	15
8. CONFIGURATION WIZARD.....	16
9. ADVANCED FUNCTIONS	21
NETWORK SETTINGS	22
LAN Configurations	22
STORAGE CONFIGURATION	24
Storage Sharing.....	24
FTP Server	25
Disk Utility.....	26
Access Control	27
File Browser.....	29
iTunes Server	29
UPnP AV Media Server Settings.....	30
ADVANCED TOOLS.....	31
Configuration Backup	31
Reset to Default.....	31
Reboot	31
Firmware Upgrade.....	31
DOWNLOAD ASSISTANT	32
Add Download Job	32
Email Alert Configuration.....	37
Download Status	38
MISCELLANEOUS SETTINGS	39
Administrator Timeout	39
Change Password	39
System Time.....	40
System Logs.....	40
10. FAQ	41
11. SPECIFICATIONS	43
12. SAFETY.....	44
13. GENERAL PUBLIC LICENSE	45

Default Settings

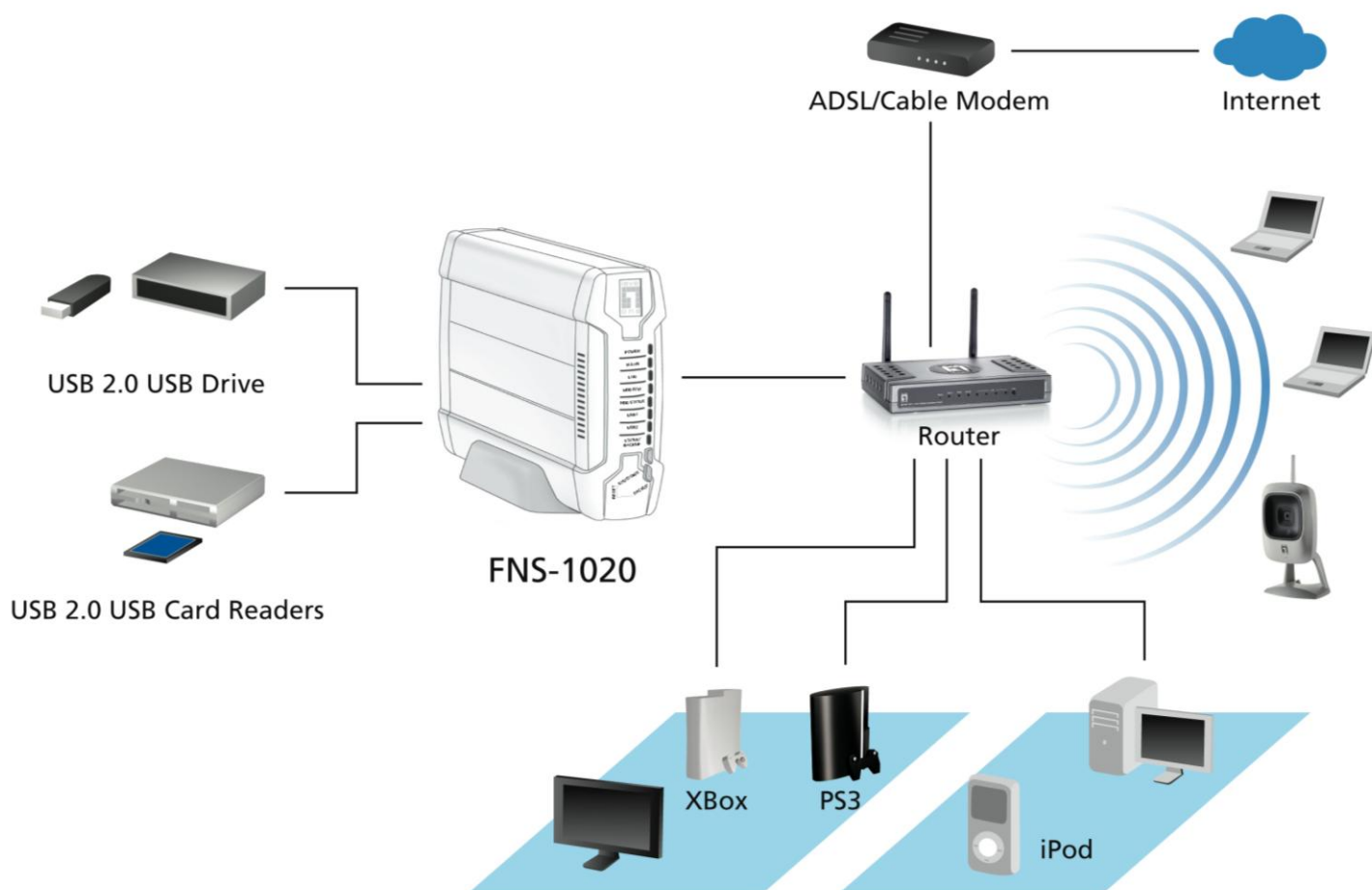
IP Address	192.168.0.254
Password	admin

1. Introduction

Congratulations on your purchase of LevelOne FNS-1020 1-Bay Simple Network Storage. This product is specifically designed for Small Office and Home Office needs. It provides a complete SOHO solution for Internet surfing, and is easy to configure and operate even for non-technical users.

Instructions for installing and configuring this product can be found in this manual. Before you install and use this product, please read the manual carefully for fully exploiting the functions of this product.

The LevelOne FNS-1020 is designed for 3.5" IDE and Serial-ATA (SATA) hard disk drive use. This storage server is a value-adding equipment that allows you to control file-sharing within a small office/home/office (SOHO) environment. It can also be used in multi-media applications, allowing to stream music or videos to networked media players. Additionally, the download function can be used independently to perform download tasks from FTP, HTTP and BitTorrent sources.



2. Unpacking and Setup

This chapter provides the package contents and setup information for the *1-Bay Simple Network Storage*.

Features

- 1x 10/100Mbps Auto-MDIX RJ-45 Port
- Single 3.5 inch SATA or IDE Hard Disk Bay
- 2x High Speed USB2.0 Ports for extra storage
- One-Button USB to Hard Disk File Transfer
- Download Files without PC - Supports HTTP, FTP and BitTorrent
- Share Files using FTP Server or Windows File Sharing / Samba
- Supports FAT, FAT32, EXT2 and NTFS (Read Only)
- Built-in UPnP and iTunes Media Servers
- Browser-based Interface Configuration and Management
- Supports Windows 2000/XP/Vista

Package Contents

Open the box of the FNS-1020 and carefully unpack it. The box should contain the following items:

- FNS-1020 1-Bay Simple Network Storage
- Power Adapter and Power Cord
- RJ45 Ethernet LAN Cable
- Desktop Stand and Rubber Feet
- Installation Screws
- CD with Manual / Configuration Utility
- Quick Installation Guide

If any of the above items are missing, please contact your retailer or distributor.

3. Hardware Installation

Front View



1) Power LED

Indicates power off or on

2) LAN

A solid light indicates the LAN link is achieved

Off indicates no LAN link

LED blinks during LAN data transmission

3) HDD R/W

Lights when reading or writing to the hard disk drive

4) HDD Status

On – Error with HDD

Off – No HDD detected

Blinking – 1 per second, device is working normally

Fast Blinking – HDD is running low on disk space

5) USB 1 and 2

A solid light indicated USB device is in use

6) Shutdown Button

Press for 4 seconds to prepare unit for shutdown. Do this before powering off the unit.

7) Backup Button

Press for 4 seconds to copy data from attached USB device to HDD

8) Reset

Press Shutdown and Backup buttons together for 6 seconds to reset system to factory defaults.

Rear View



1) LAN Port

Connect Ethernet devices such as computers, switches or hubs.

2) USB 1 and 2

Connect USB storage devices such as Pen Drives, Card Readers, Portable Music Players

3) Power On/Off Button

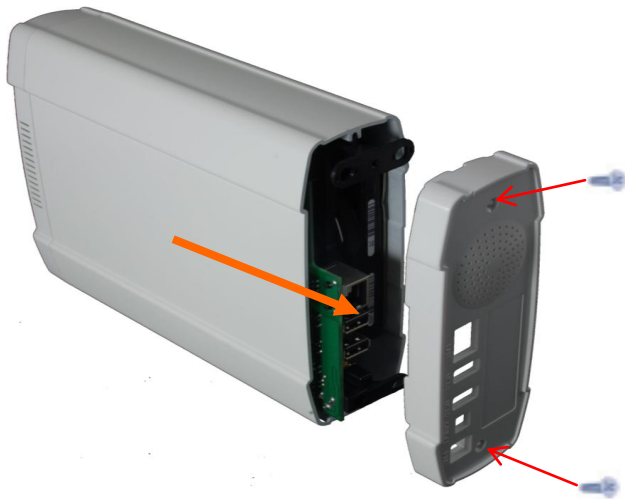
Used to turn unit on and off.

4) Power Jack

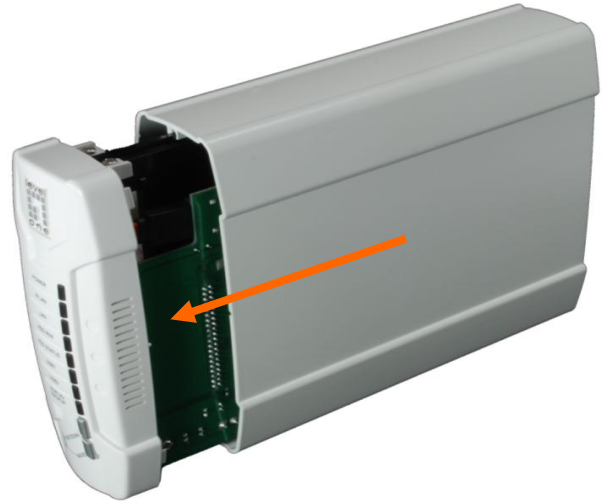
Receptor for the supplied power adapter

4. Hardware Installation

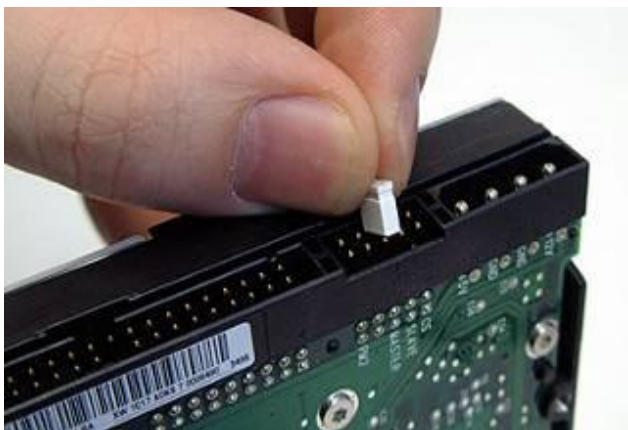
1. Unfasten the two screws from the rear and remove the back panel.



2. Pull out front panel and inner tray.



3. Make sure the jumper on your hard drive is set to **Master**



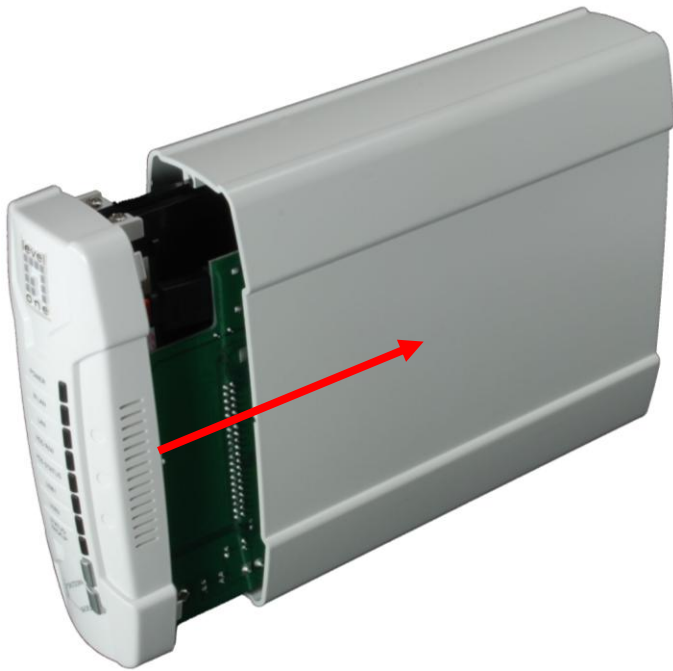
4. Install your 3.5-inch IDE or SATA hard drive and connect the data and power cables.

Then use the screws provided to fasten the hard drive.



* Consult the instructions on your hard drive as it differs from each manufacturer.

5. Put on the front panel.
The arrow on the casing indicates **bottom front**.



6. Reassemble the back cover and fasten the two screws.

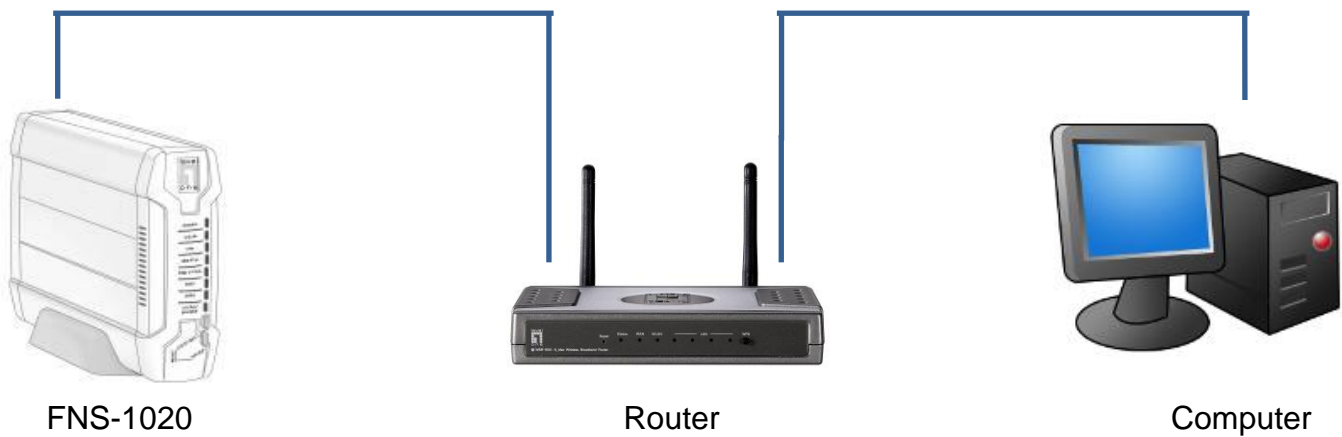


5. Connecting the Cables

1. Now connect the power adapter and network cable.



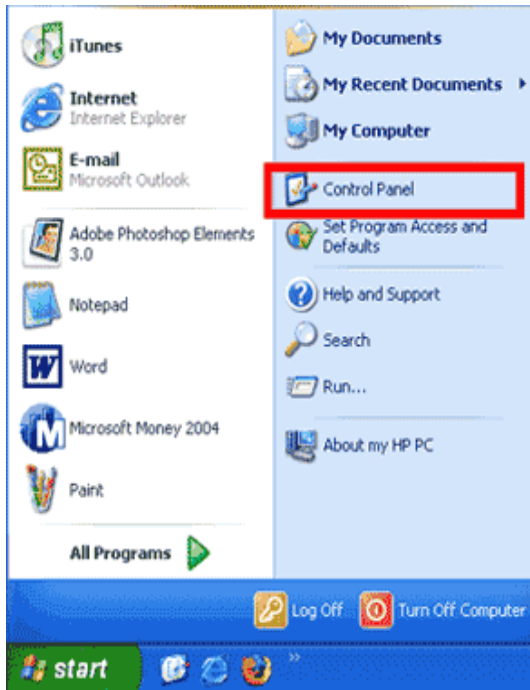
2. Connect the FNS-1020 to an Internet ready router.



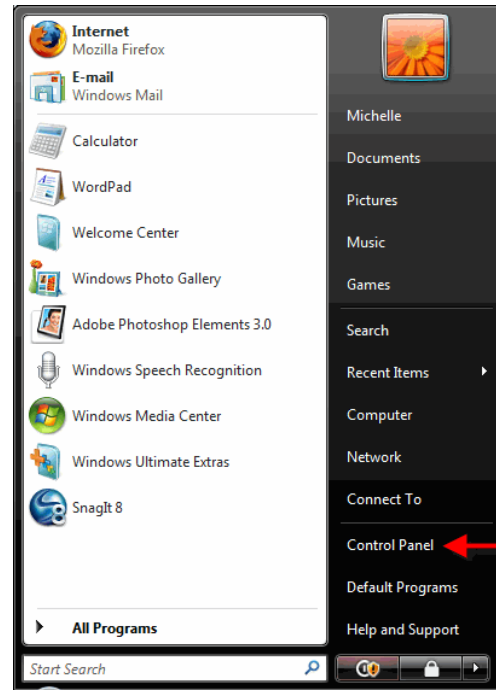
3. Installation is now complete. You can now power on the device and begin to configure the settings.

6. Check Your Network Settings (Windows XP / Vista)

1. Click Start button and open Control Panel.



Windows XP

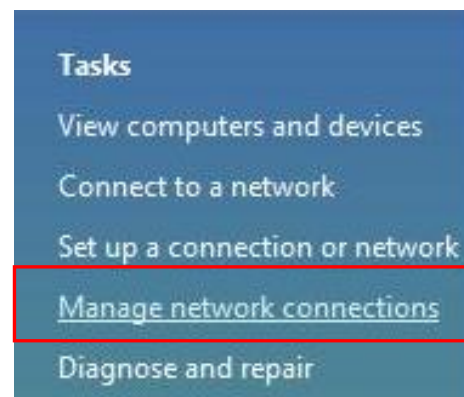
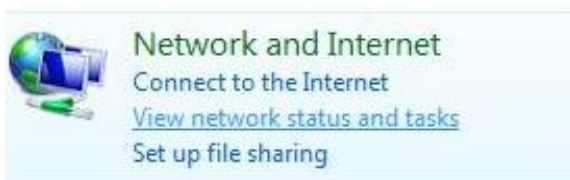


Windows Vista

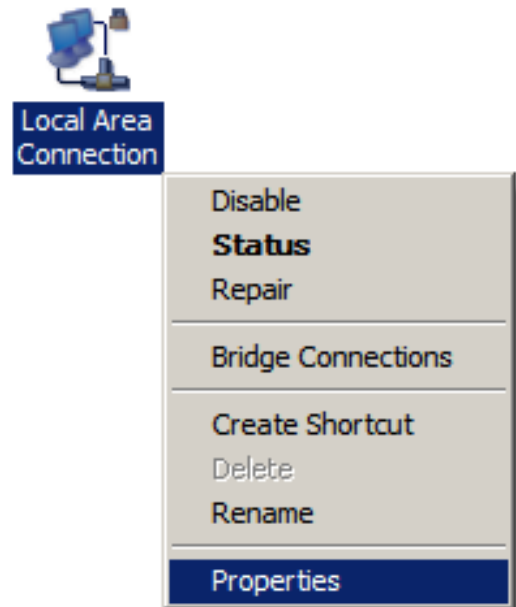
2. Windows XP, click [Network Connection]



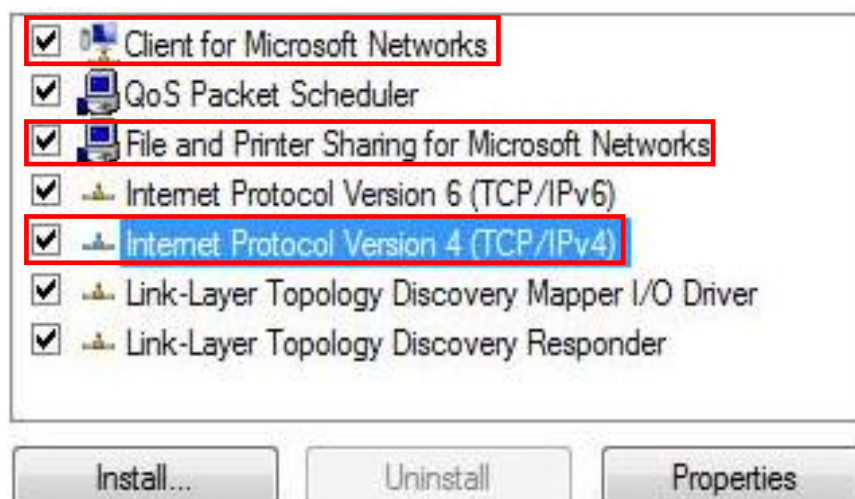
Windows Vista, click
[View Network Status and Tasks]
then [Manage Network Connections]



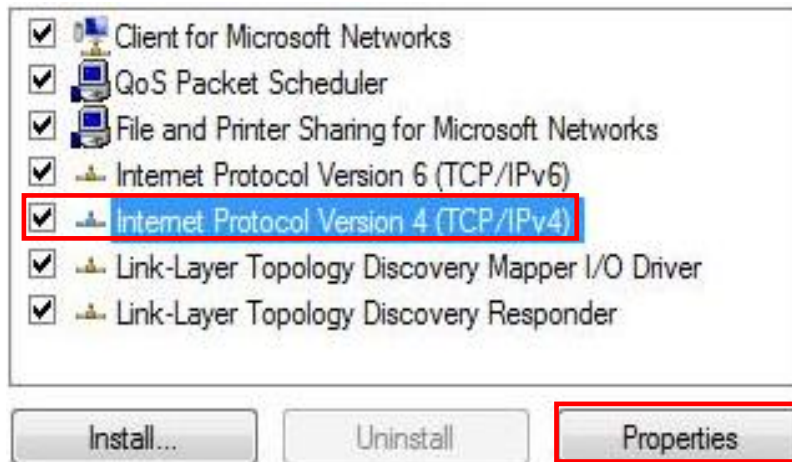
3. Right click on **[Local Area Connection]** and choose **[Properties]**.



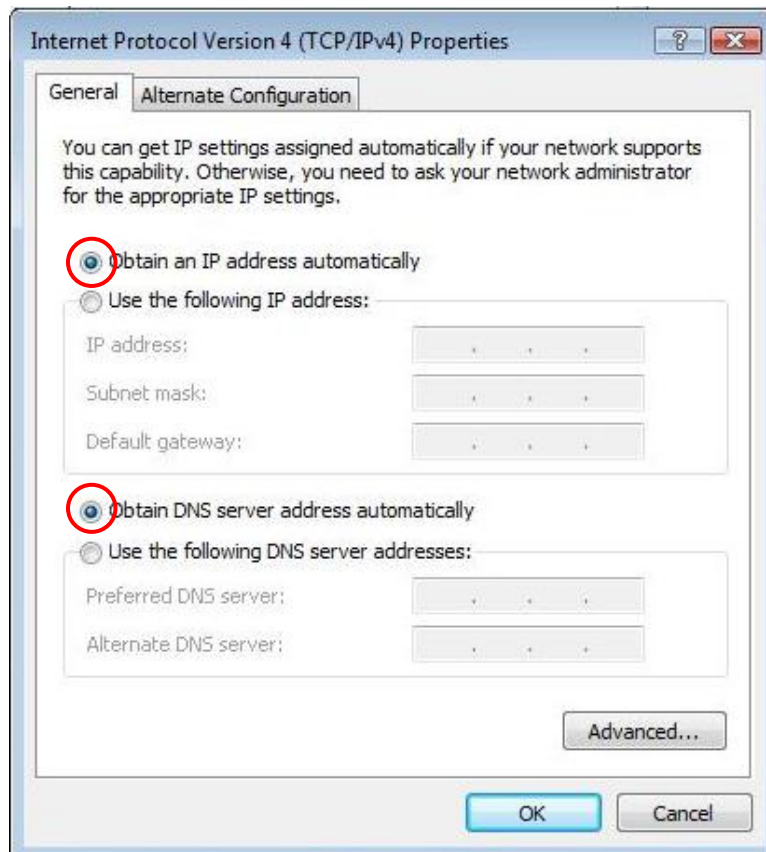
4. Check the “**Client for Microsoft Networks**”, “**File and Printer Sharing for Microsoft Networks**”, and “**Internet Protocol (TCP/IP)**” is ticked. If not, please install them.



5. Select “Internet Protocol (TCP/IP)” and click [Properties]



6. Select these two options and click [OK].



7. Configuration Interface

Once all the wires are properly connected power on the FNS-1020. There are two methods to access the configuration and management interface.

Utility Method

1. Insert the included CD and install the **Utility**.
2. Use the Utility to find your FNS-1020.

Note: The included utility only works in Windows XP and Vista 32-bit. If you use other operating systems, please use the Web Browser Method.

FNS-1020 Configuration Utility

192.168.0.254 Find FNS-1020

Status

▼ LAN

Device IP :	192.168.0.254
Subnet Mask	255.255.255.0
Gateway :	0.0.0.0
Host Name :	FNS-1020
LAN MAC Address :	00-50-18-55-9F-19
DHCP Mode :	Auto Mode

▼ FNS-1020

Connected Devices :	DISK : Ready USB1: Not Ready USB2: Not Ready
Firmware Version :	Version Number :R4.00b4_1212

You don't have administrative rights or you have been idle too long, so you are not allowed to access configuration pages. Please log in as administrator and try again!

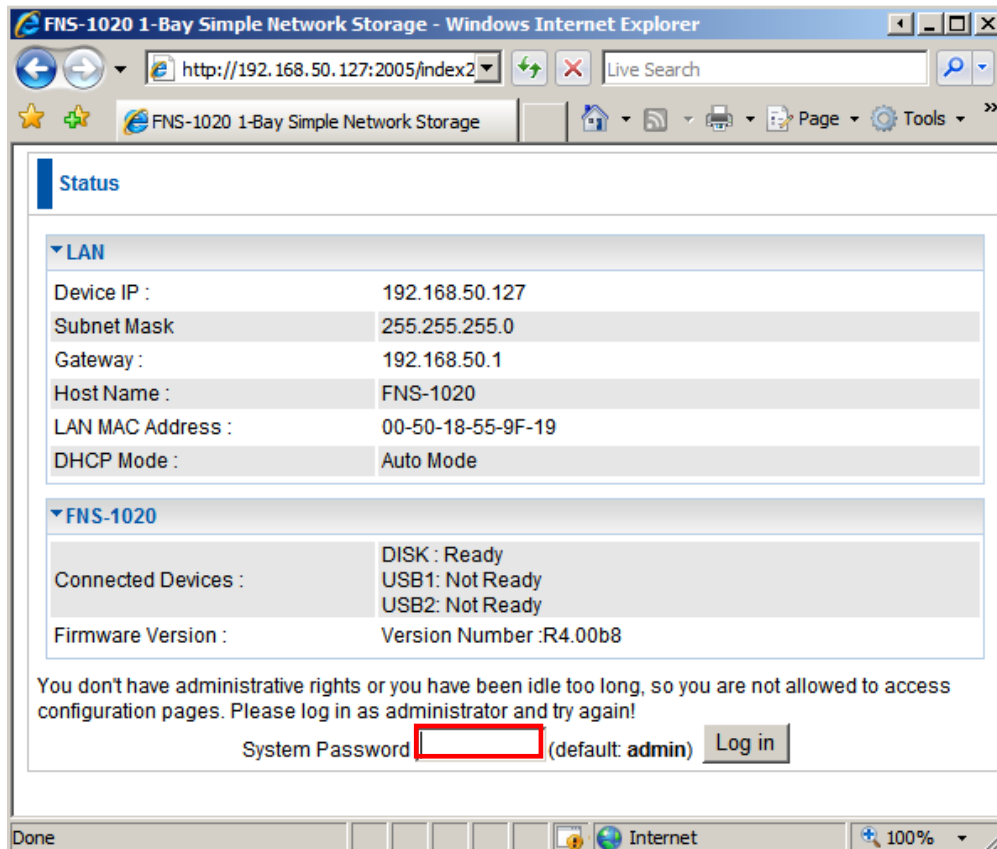
System Password (default: admin) Log in

Web Browser Method

1. Open a web browser (Internet Explorer/Firefox/Safari) and type in the address bar **FNS-1020** and press “Enter.”



2. Please enter the password (**admin**)



Configuration Modes

After login, you will be presented with the following options.

Please press **Wizard** or **General** to configure the device
or press **Log Out** to log out device configuration.

Wizard: Simple step-by-step configuration to help you configure the FNS-1020.

General: Contains more submenus to configure more advanced functions.

Log Out: Exit the Configuration Interface.

8. Configuration Wizard

The Wizard allows you to quickly and easily set up and configure the FNS-1020 1-Bay Simple Network Storage. The items that will be set up includes:

- IP Address
- DHCP Mode
- Device Time
- Hard Disk

Press the “Next” button to start configuration.

Setup Wizard Steps

Steps	Items	Descriptions
1.	Network Settings	Set the IP Address and DHCP Mode.
2.	System Time	Set the System Time.
3.	Storage Setup	Make a partition on the disk and decide disk size.
4.	Save	Save your configuration.

Step 1:

If you are unsure which option to choose, just keep it as [Auto].

Step 1: Network Settings

Option	DHCP Mode	Descriptions
<input type="radio"/>	Client	The FNS-1020 will obtain an IP Address from a DHCP Server on your LAN network. Usually your broadband router will have a built-in DHCP Server.
<input type="radio"/>	Server	The FNS-1020 will allocate IP Addresses to other network devices on your LAN network. Note that only one DHCP Server can exist on a LAN at one time.
<input checked="" type="radio"/>	Auto	The FNS-1020 will detect whether a DHCP Server exists on your LAN network. If one is found, then it will become a client. If none is found, then it will become a server.
<input type="radio"/>	Static	Allows you to set the IP Address of the FNS-1020 manually.

If you choose Server/Auto/Static modes, you will need to set further TCP/IP settings. Usually there is no need to change these settings, however if you encounter difficulty, please ask your network administrator.

IP Settings

	Item	Input
1.	Device IP :	<input type="text" value="192.168.0.254"/>
2.	Subnet Mask :	<input type="text" value="255.255.255.0"/>
3.	Primary DNS :	<input type="text" value="0.0.0.0"/>
4.	Secondary DNS :	<input type="text" value="0.0.0.0"/>
5.	Gateway :	<input type="text" value="0.0.0.0"/>

Step 2:

Here there are three ways to set the system time for your FNS-1020.

1. Sync with a Network Time Server
2. Use your computer's time
3. Set the time manually.

Step 2: Set Time

☐ **Select Time Zone**

(GMT+08:00) Taipei

☐ **Change System Time**

☒ Get Date and Time by NTP Protocol

Time Server time.nist.gov

☐ Set Date and Time using PC's Date and Time

PC Date and Time : Tuesday, 17 February 2009 2:09:28 PM

☐ Set Date and Time manually

Date2002Jan1

Time (HHMMSS)000

(HH:0-23,MM:0-59,SS:0-59)

BackNext

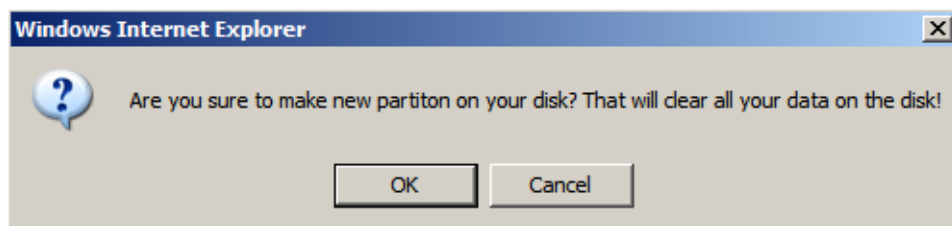
Step 3:

There are two security levels.

Step 3: Storage Configuration	
	Option
Choose security level	<input checked="" type="radio"/> Guest Mode <input type="radio"/> Authorization Mode <input type="radio"/> Decide it later
Do you want to initial Disk with only one partition ?	<input checked="" type="radio"/> Yes <input type="radio"/> No
<div>BackNext</div>	

Guest Mode: Anyone can access your storage.

If Guest Mode is chosen, the system will ask if you want to initialize your disk with only one partition. If you are using a new hard disk, it is recommended you choose [Yes], as this option will format your hard disk later. If you already have data on your hard disk, you may select [No]



Authorization Mode: Only authorized users can access data in the password-protected folders.

If authorization mode is chosen, it is necessary to reallocate and format your hard disk drive. Please indicate your desired capacities for public and private directories.

When the capacity of one directory is assigned, the system will automatically assign the rest to the other directory.

Note: The [Backup] button on the front panel will copy folders/files from USB devices to the public directory once you activate authorization mode.

Or you can decide the level of security later if you cannot decide now.

Step 3: Storage Configuration

	Option
Choose security level	<input type="radio"/> Guest Mode <input checked="" type="radio"/> Authorization Mode <input type="radio"/> Decide it later
Disk Total Capacity = 157066 MB	
Public Directory Capacity	<input type="text" value="0"/> MB
Private Directory Capacity	<input type="text" value="0"/> MB
*** Public Directory is default sharing directory for everyone ***	
***Private Directory is used to be user's private directory and can't share to other users ***	
<input type="button" value="Back"/> <input type="button" value="Next"/>	

Step 4

This is a summary of the settings you have chosen.

If you would like to start over without saving changes, click "Discard Settings."

Otherwise, once all the information is confirmed, please click "Save" to continue.

Note: If the disk is initializing and formatting, please wait until the progress bar shows 100%. Do not press any button or power off the device.


Once formatting is done, the system will reboot automatically. Please wait 30 seconds for the system to restart.

9. Advanced Functions

To access the Advanced Setup, click on **General** at the main login page.

Please press **Wizard** or **General** to configure the device
or press **Log Out** to log out device configuration.

Once in the Advanced Setup, you will be presented with the following screen.



- Status
- ▶ Network Settings
- ▶ Storage Configuration
- ▶ Advanced Tools
- ▶ Download Assistant
- ▶ Misc.

Log Out

English ▼

Status

▼ LAN

Device IP :	192.168.50.127
Subnet Mask	255.255.255.0
Gateway :	192.168.50.1
Host Name :	FNS-1020
LAN MAC Address :	00-50-18-55-9F-19
DHCP Mode :	Auto Mode

▼ FNS-1020

	DISK : Ready
Connected Devices :	USB1: Not Ready USB2: Not Ready
Firmware Version :	Version Number :R4.00b8

Refresh

Devices information

Display time: Tue Feb 17 18:38:35 2009


In this mode, you can change the language of the User Interface.

The supported languages are **English, German, Danish, Greek and Traditional Chinese.**

Network Settings

LAN Configurations

These are the various network settings for the FNS-1020.



- Status
- ▼ Network Settings
 - LAN Config
 - ▶ Storage Configuration
 - ▶ Advanced Tools
 - ▶ Download Assistant
 - ▶ Misc.

[Log Out](#)

English ▼

LAN Configuration

▼ General Settings

Device IP

192.168.0.254

Host Name

FNS-1020

▼ DHCP Mode

☐ Client

☐ Server

☒ Auto

☐ Static

Clients List...

Fixed Mapping...

▼ DHCP Server Settings

Subnet Mask

255.255.255.0

IP Address Range

50 ~ 199

Primary DNS

0.0.0.0

Secondary DNS

0.0.0.0

Gateway

0.0.0.0

Save

Undo

General Settings	
Device IP	The default IP address of FNS-1020. However if the device obtained an IP address from a DHCP server, then the IP address will be different
Host Name	The identification name of the FNS-1020 when you browse for it on your network.
DHCP Mode	
Client	The FNS-1020 will receive an automatic IP address from a DHCP server on your network.
Server	FNS-1020 will become a DHCP server on the network and allocate IP addresses to other devices.
Static	Manually Configure the IP address and subnet mask of the FNS-1020
Auto	Let the FNS-1020 determine whether to use Client or Server mode.

DHCP Server Settings	
Subnet Mask	The subnet mask of your network
IP Address Range	Decide the IP address range that the FNS-1020's DHCP Server will provide.
Primary / Secondary DNS	This feature allows you to assign DNS Servers.
Gateway	The gateway IP address would be the IP address of your gateway or router.

Storage Configuration

In this section, you will learn how to use the different storage functions such as file sharing, assign user access rule and enabling media servers.

Storage Sharing

These settings decide how your FNS-1020 will appear in the “My Network Places” in Windows operating systems.



- Status
- Network Settings
- ▼ Storage Configuration
 - Storage Sharing
 - FTP Server
 - Disk Utility
 - Access Control
 - File Browser
 - iTunes Server
 - UPnP Settings
- Advanced Tools
- Download Assistant
- Misc.

Storage Sharing Configuration

▼ Storage Server

Device Name

FNS-1020

WorkGroup

WORKGROUP

Comment

samba server

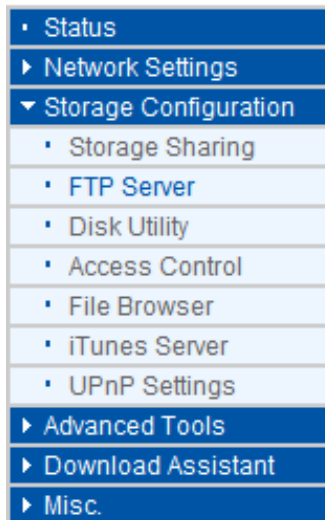
Save

Undo

Storage Server	
Device Name	The identification name you can give to the FNS-1020 as it will appear in Microsoft My Network Places.
WorkGroup	Indicates the workgroup name under Microsoft My Network places.
Comment	The comment will be shown when you see if in Microsoft My Network places.

FTP Server

FTP is another method of accessing your files. By default, the FTP server is enabled so you can use any FTP client utility. An advantage to FTP service is that you can set the maximum concurrent connections (max 20).



FTP Server

FTP Server Configurations

FTP

☐ Disable ☒ Enable

FTP Max Connection per IP

2

FTP MAX Clients

5

Client Support UTF8

☒ No ☐ Yes

Codepage

LatinI+ Europe(CP850)

Save

Undo

FTP Server	
FTP	Choose to enable or disable the FTP service
Max Connection per IP	Set the number of connections allowed from each IP address
Max Clients	Set the maximum number of clients allowed on the FTP server
Client Support UTF8	Select whether you FTP client utility can support UTF8 coding for file names.
Codepage	Select which language will be used for folder / file names on the hard disk. Incorrect language settings may cause folder / file names to be unreadable.

Disk Utility

If you did not initialize and format the hard disk using the wizard, then you can manually do it here.



• Status
▸ Network Settings
▾ Storage Configuration
▪ Storage Sharing
▪ FTP Server
▪ Disk Utility
▪ Access Control
▪ File Browser
▪ iTunes Server
▪ UPnP Settings
▸ Advanced Tools
▸ Download Assistant
▸ Misc.

Disk Utility					
Disk Total Capacity = 157066 MB					
Partition	Free Space (MB)	Used (MB)	Total (MB)	Format	Check
1 [ext2]	55711	467	56178	Format	Check
2 [ext2]	98227	61	98288	Format	Check
Disk Partition					

Disk Utility	
Format	Format the hard disk drive
Check	Checks the integrity of the disk partition.

You can also use the Disk Utility to change the hard disk to one partition by clicking the **Disk Partition** button. If you press “Format” button, the FNS-1020 will make only one partition with the total capacity of the internal hard disk, and then format that partition.

FDisk Utility	
Total Disk capacity(MB) = 157066 MB	
▶ Make only one partition on disk of total capacity	Format

Note: All data on the hard disk will be ERASED after pressing the format button. The drive will be formatted to Ext2 file system, so it cannot be connected directly to a Microsoft Windows system without reformatting to another file system that Windows systems can recognize.

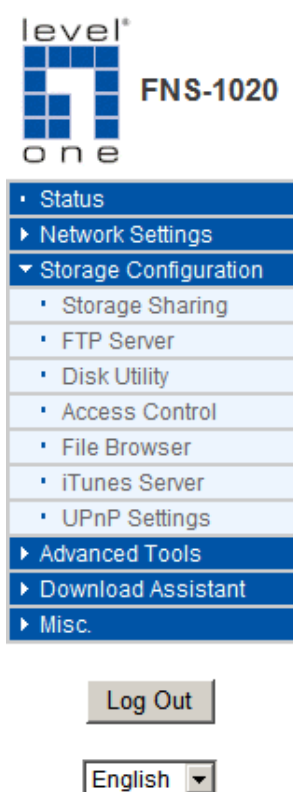
Access Control

These settings allow you to set the User Access security controls for your shared files and folders under Microsoft Network Places and FTP services. There are two levels of access control.

Guest Mode: Anyone can access any data stored on the FNS-1020. There is no need to set any user access controls under this mode.

Authorization Mode: Only authorized people can access certain folders on the hard disk. In this mode, you will need to edit user configurations to assign access rights to privileged users. You can also assign quota limits for every user.

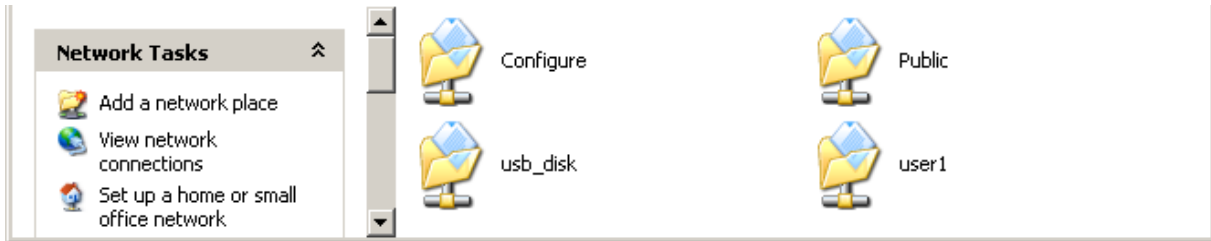
Note: The hard disk needs to be initialized when you activate authorization mode for the first time. Also, the initialization of the hard disk will ERASE all data on the hard disk drive.



The screenshot shows the 'Access Control' configuration page. It has three main sections: 'User Access Configuration', 'Quota Configuration', and 'User Accounts'.
1. 'User Access Configuration': Contains a 'Security Level' section with radio buttons for 'Guest Mode' and 'Authorization Mode' (which is selected). A 'Save' button is to the right.
2. 'Quota Configuration': Contains a 'Quota' section with radio buttons for 'Disable' (selected) and 'Enable'. To the right are 'Quota Status' and 'Save' buttons.
3. 'User Accounts': A table with columns 'User Name', 'Password', and 'Quota'. Below the table are input fields for 'User Name' (with a '(Max 20 users)' hint), 'Password', and 'Quota' (with a '0' value and '(MBytes)' hint). At the bottom of this section are 'Add', 'Modify', and 'Delete' buttons.

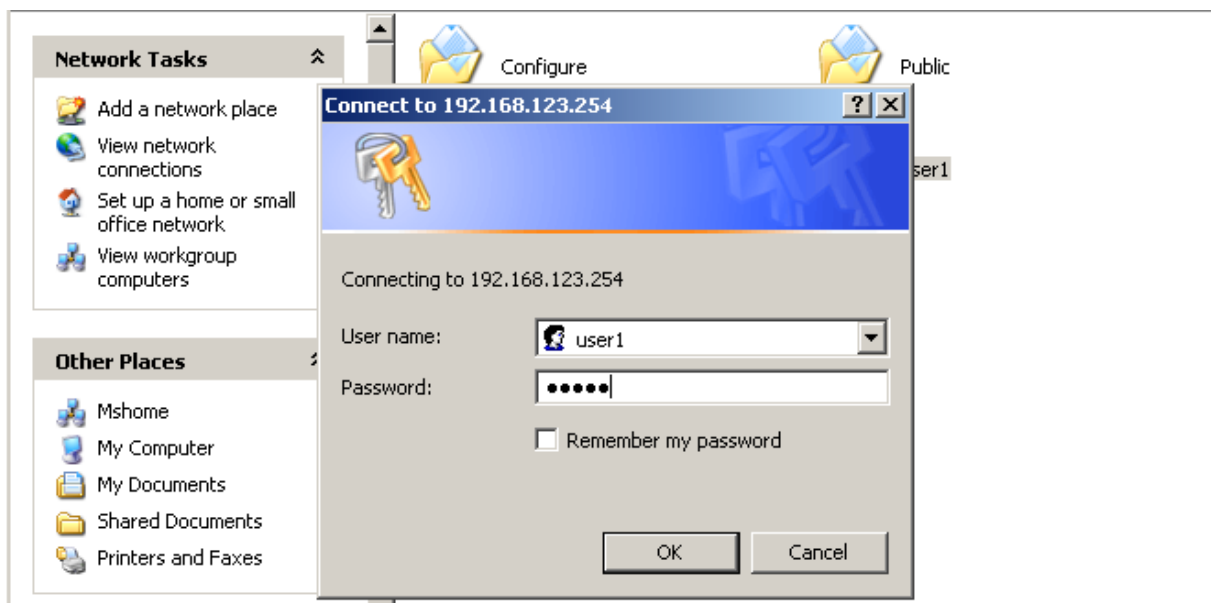
To configure user accounts, just type in the desired username, password and/or quota limits and press the “Add” button.

To access folders in Authorization mode, find the FNS-1020 in Microsoft My Network Places.



For example, we have created a User Account called **user1**.

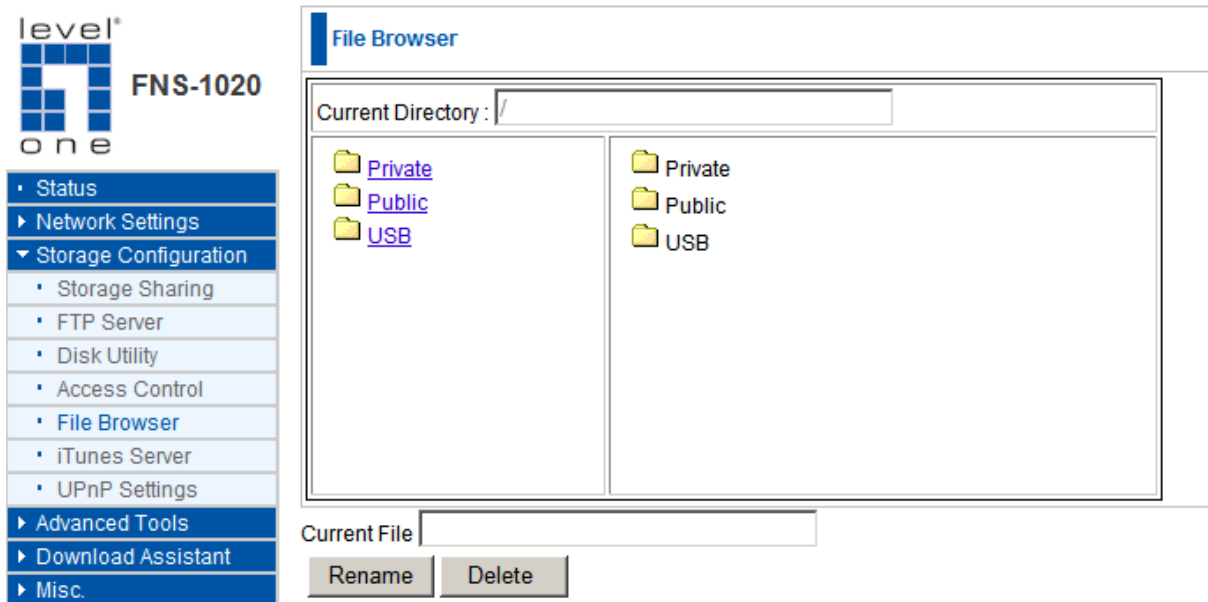
Anyone can access data stored in the **Public** and **usb_disk** folders. However only **user1** can access data which is stored in the **user1** folder. When someone wants to access the **user1** folder, an authentication window will pop-up and ask for the username and password.



File Browser

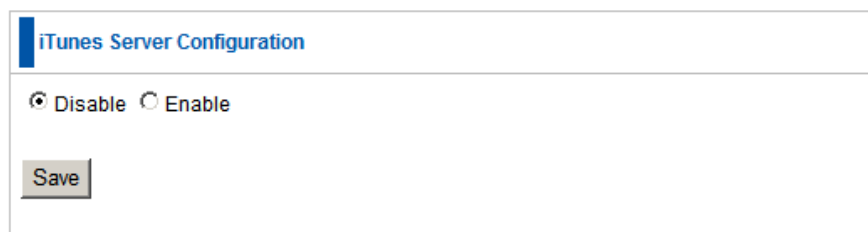
The FNS-1020 provides a file browser to let users rename and delete folders / files easily. This is especially useful when users cannot rename or delete folders or files via FTP or Microsoft My Network Places successfully.

For example, users may download from the Internet an “unrecognized” file, and may appear as random characters, such as \$\$\$@.avi. Sometimes these files cannot be renamed so the user can correct the file name with this file browser.



iTunes Server

The iTunes server allows computers with iTunes installed to find the music files stored on the FNS-1020. This allows you to centralize your music collection. Simply choose to **Enable** or **Disable** this function in the user interface.



UPnP AV Media Server Settings

An UPnP Media Server allows other multimedia devices on your network to find and access media files on the FNS-1020. Using this method, a virtual folder will be created to show only the media file types decided by the user. This filtering process is done using a database of media files which is automatically updated in the background by the FNS-1020.

level[®] one FNS-1020

- Status
- ▶ Network Settings
- ▼ Storage Configuration
 - Storage Sharing
 - FTP Server
 - Disk Utility
 - Access Control
 - File Browser
 - iTunes Server
 - UPnP Settings
- ▶ Advanced Tools
- ▶ Download Assistant
- ▶ Misc.

UPnP AV Media Server Settings

Virtual Folder Display

☒ Enable Music ☒ Enable Video

☒ Enable Photo ☒ Enable Disks

Rescan Interval Minute:

Update DB in Background ☐ Disable ☒ Enable

Update DB manually

Create Database progress report

UPnP Server	
Virtual Folder Display	Tick the type of files you want to appear in this virtual folder.
Rescan Interval	How often the FNS-1020 will scan your folders and update the list of media files.
Update DB in Background	Whether the FNS-1020 will automatically update the database of media files in the background.
Update DB manually	Force an update of the media files database.
Sharing Settings	You can choose up to 3 different folders to share in your UPnP Media Virtual Folder. The FNS-1020 will scan these folders to build the media file database.

Advanced Tools

These tools enable you to configure the various system settings.

Configuration Backup

This allows you to back up the current settings of the FNS-1020.

Reset to Default

This will reset the FNS-1020 to its default factory settings.

Reboot

Will reboot the FNS-1020

Firmware Upgrade

This enables you to upgrade to newer firmware (available to download on www.level1.com), or to restore a backup configuration.

Choose the location of the file to install on the FNS-1020 and then click the “Upgrade” button.

Download Assistant

This function allows you to download files from the Internet without using a computer. You can queue or schedule download jobs so you can easily let the FNS-1020 do the work for you without needing any additional input. Additionally, the FNS-1020 can even send an e-mail to you to inform you that the file has finished downloading.

Add Download Job

There are three types of protocols you can use to download files, HTTP, FTP or BitTorrent. The first step in adding a download job is to choose the protocol to use.

The screenshot shows the 'level one FNS-1020' web interface. On the left is a sidebar menu with options: Status, Network Settings, Storage Configuration, Advanced Tools, Download Assistant (selected), Add Download Job (highlighted), Email Alert Config, Download Status, and Misc. Below the menu are 'Log Out' and 'English' buttons. The main area is titled 'Add Download job'. It features a 'Select Protocol' section with radio buttons for HTTP (selected), FTP, and BitTorrent. Below this is the 'HTTP' configuration section with fields for 'Job Name', 'HTTP URL', 'Save to' (set to '/Public' with a 'Browse' button), 'Start Time' (radio buttons for 'At Once' and 'Scheduled Time/Date', with date/time pickers set to 18/Feb/2009 16:06), and 'Email when Complete' (with a placeholder '(xxx@yyy.com)'). At the bottom right are 'Email Config', 'Save', and 'Undo' buttons.

HTTP	
Job Name	Name of the Download Job
HTTP URL	IP address or URL of the file to download Eg: software.level1.com/file1.avi
Save to	Indicate which folder to save the file on the FNS-1020 hard disk drive. You can use the "Browse" button, or type in the path manually.
Start Time	The download job can be set to start immediately (At Once), or scheduled to start at a later time and date.
Email when Complete	When the file has finished downloading, a notice will be sent to the indicated e-mail address. Click on the "Email Config" button to set up the e-mail settings.

Log Out

English ▼

Add Download job

▼ Select Protocol

☐ HTTP ☒ FTP ☐ BitTorrent

▼ FTP

Job Name

FTP Server

Port

Login method

☒ Anonymous ☐ Account

Username

Password

Save to

Browse

Start Time :

☐ At Once ☒ Scheduled Time/Date

Email when Complete

Email Config

Save

Undo

FTP	
Job Name	Name of the Download Job
FTP Server	IP address or URL of the file to download Eg: ftp.level1.com/file1.avi
Port	Port number that the source FTP server uses.
Save to	Indicate which folder to save the file on the FNS-1020 hard disk drive. You can use the "Browse" button, or type in the path manually.
Start Time	The download job can be set to start immediately (At Once), or scheduled to start at a later time and date.
Email when Complete	When the file has finished downloading, a notice will be sent to the indicated e-mail address. Click on the "Email Config" button to set up the e-mail settings.

BitTorrent

Before using the BitTorrent downloading function, please click on the **BitTorrent Config** button to configure the settings.

Bittorrent Client Configuration

▼ Settings

Job Limit

10

Listen Port

5800

▼ Limits

Download Limit

100

KB/s

Upload limit

20

KB/s


Back

Save

Undo

BitTorrent	
Job Limit	Number of BitTorrent jobs that can be running at one time.
Listen Port	The port number that the FNS-1020 will run the BitTorrent Client. You will need to set up on your broadband router, port forwarding or a virtual server to the FNS-1020 IP address for this port number.
Download Limit	Combined maximum download speed that the FNS-1020 will run using BitTorrent. This value must be under 100KB/s, or use -1 to set no limits.
Upload Limit	Set the limit for the combine upload speed that the FNS-1020 will run using BitTorrent.

Step 1:

**FNS-1020**

- Status
- ▶ Network Settings
- ▶ Storage Configuration
- ▶ Advanced Tools
- ▼ Download Assistant
 - Add Download Job
 - Email Alert Config
 - Download Status
- ▶ Misc.

Add Download job

▼ Select Protocol


☐ HTTP ☐ FTP ☒ BitTorrent

▼ BitTorrent

Step 1: Upload Torrent File:

You will need to first upload the Torrent file to the FNS-1020. Use the “Browse” button to select the .torrent file.

Step 2:



- Status
- ▶ Network Settings
- ▶ Storage Configuration
- ▶ Advanced Tools
- ▼ Download Assistant
 - Add Download Job
 - Email Alert Config
 - Download Status
- ▶ Misc.

Log Out

English ▼

Add Download job

▼ Select Protocol

☐ HTTP
 ☐ FTP
 ☒ BitTorrent

▼ BitTorrent

Step 2: Setup Download Job

Job Name

ubuntu-8.10-desktop-i386.

Torrent File

ubuntu-8.10-desktop-i386.

File Character Set

None ▼

Save to

/Public

Browse

Start Time :

☐ At Once
 ☒ Scheduled Time/Date

18 ▼

/ Feb ▼

/ 2009 ▼

16 ▼

: 42 ▼

Email when Complete

Email Config


Save

Undo

BitTorrent	
Job Name	Name of the Download Job
File Character Set	The language of the filename. If unsure, use none .
Save to	Indicate which folder to save the file on the FNS-1020 hard disk drive. You can use the “Browse” button, or type in the path manually.
Start Time	The download job can be set to start immediately (At Once), or scheduled to start at a later time and date.
Email when Complete	When the file has finished downloading, a notice will be sent to the indicated e-mail address. Click on the “Email Config” button to set up the e-mail settings.

Email Alert Configuration

Email Alert can send you a notification email when a download job has completed.



- Status
- ▶ Network Settings
- ▶ Storage Configuration
- ▶ Advanced Tools
- ▼ Download Assistant
 - Add Download Job
 - Email Alert Config
 - Download Status
- ▶ Misc.

Email Alert Configuration

▼ Settings

E-mail Address :

SMTP Server :

SMTP Server Port:

Account Name :

Password :

Email Settings	
E-mail Address	<p>Enter the email that will be used as the sender of the email alert feature.</p> <p>Note: Some mail servers will refuse to process an email if there sender isn't an account on the mail server.</p>
SMTP Server	<p>Enter the IP address or domain name of the mail server you want to use.</p>
SMTP Server Port	<p>Enter the Port number of the SMTP Server you want to use. This is usually 25.</p>
Account Name	<p>Please enter the username of your account on the mail server.</p>
Password	<p>Please enter the password of your account on the mail server.</p>

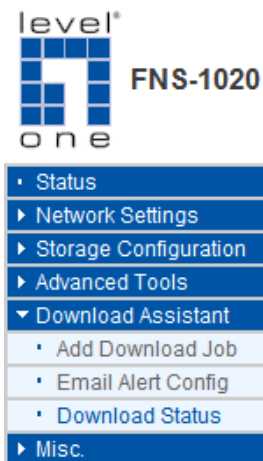
Download Status

This page displays the status of the download jobs being processed by the FNS-1020.

Running: Shows all the download jobs that are currently running.

Waiting: Shows download jobs in queue and waiting to run

Scheduled: Shows the download jobs that have been scheduled to run at a later time and date.



Download Status

View Running (1 Jobs)

Page 1/1

	Type	Job Name	Status
<input type="checkbox"/>	BT	ubuntu-8.10-desktop-i386.iso [mi	Progress: [0.00] %, 0 peers, download from [0] [.....

Download Status Log Pause Delete Refresh

Miscellaneous Settings

This section allows you to change some system settings.

Administrator Timeout

Set how long a user can be idle when logged into the FNS-1020 User Interface. If the user remains idle for too long, then they will be automatically logged out, and they will need to enter the password again.

Administrator Timeout	
Administrator Timeout	<input type="text" value="600"/> seconds (0 to disable)
<input type="button" value="Save"/>	<input type="button" value="Undo"/>

Change Password

Change the system password

Change Password	
Old Password	<input type="password" value="••••••••"/>
New Password	<input type="password"/>
Reconfirm	<input type="password"/>
<input type="button" value="Save"/>	<input type="button" value="Undo"/>

System Time

Here there are three ways to set the system time for your FNS-1020.

1. Sync with a Network Time Server
2. Use your computer's time
3. Set the time manually.

System Time

Select Time Zone

(GMT+08:00) Taipei

Change System Time

☒ Get Date and Time by NTP Protocol

Time Server time.nist.gov

☐ Set Date and Time using PC's Date and Time

PC Date and Time : Wednesday, 18 February 2009 4:57:42 PM

☐ Set Date and Time manually

Date2002Jan1

Time (HHMMSS)000

(HH:0-23,MM:0-59,SS:0-59)

Save

Undo

System Logs

Logs are useful for troubleshooting, and you can review the whole system logs here. There are four categories of logs: **System Log**, **Samba**, and **FTP**.

Log messages

System Log

View Log

Samba

View Log

FTP

View Log

10. FAQ

1. How to “Reset settings to default”?

A: Press the buttons of “Shutdown” and “Backup” simultaneously over 6 seconds to reset the system to the factory default setting.

2. What can I do if I forget login password?

A: Please refer to question 1 above to reset setting to default. The default login password is **admin**.

3. When I log in to the storage directory of the FNS-1020 via My Network Places, I cannot find any files or folders even though I have installed a Hard Disk Drive in the FNS-1020.

A: First, check your HDD status LED. If the hard disk is correctly connected, the HDD status LED will flash. If the LED doesn't flash, maybe you forget to format the new hard disk before using it, or the hard disk is not connected correctly, or the hard disk is damaged or corrupted.

Note. This FNS-1020 supports FAT/FAT32/Ext2 file systems. If the file system of hard disk drive is NTFS, the device just can only read files but cannot write to the hard disk drive.

4. I cannot save a file which is large than 2GB in size.

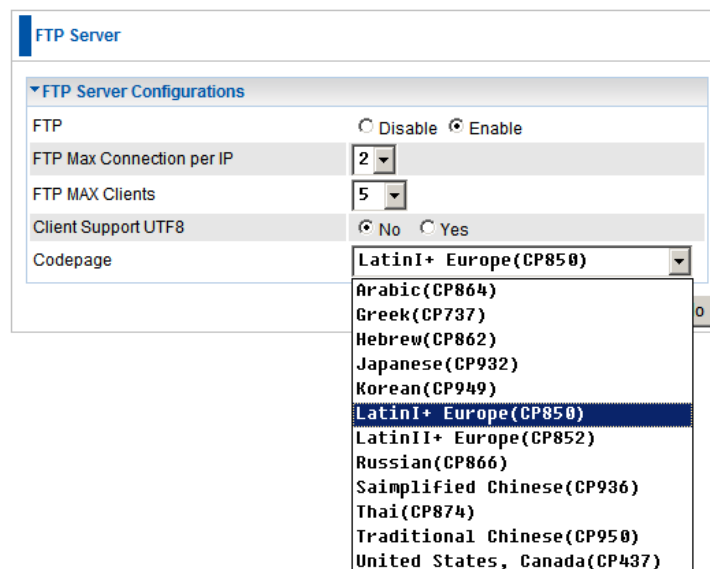
A: Please check the file system of your hard disk. This problem will occur if the file system is FAT or FAT32. Converting file system to Ext2 can solve this problem. The format utility of FNS-1020 will format HDD to ext2.

5. I can't access the shared folder with Microsoft Windows 98/Me.

A: If you use Microsoft Windows 98/Me, and want to access the authorized folder, you **MUST** have the same account and password in the FNS-1020 and your computer.

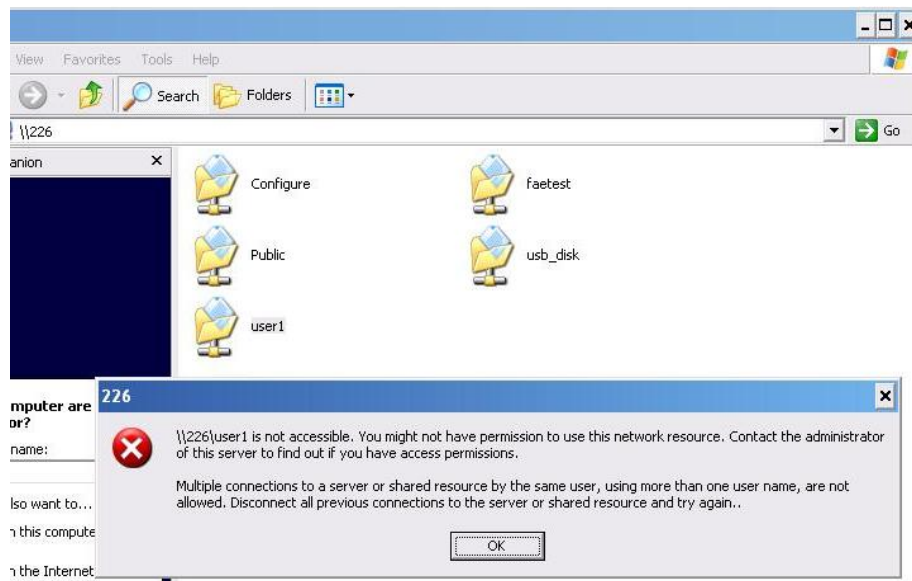
6. Why do I see the wrong folder/file name in My Network Places?

A: Please select the proper language.

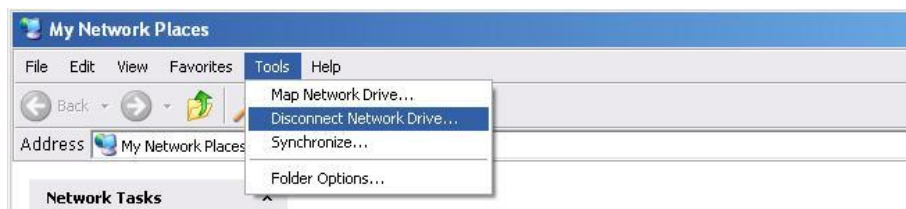


7. Why can't I access the file from My Network Places after enabling Authorization mode?

A: Sometimes I can't access folders via My Network Places by using correct user name and password, such as shown below:



This is because a Windows system caches the previous login records, so that user cannot use another account to login this device. To solve this problem, please disconnect previous network drive first. This can be done under My Network Places, select from the menu **[Tools]** and select **“Disconnect Network Drive.”**



After deleting the previous record, please try to login again.

11. Specifications

LAN – Interface	1x 10/100 Mbps Auto-MDIX RJ-45 Port
USB-Interface	2x USB2.0 High-Speed Ports
HDD Bay	1x Internal 3.5" IDE/SATA Hard Disk Bay Supports UltraDMA 133 and SATA1.0a
Buttons	Backup – Back up files from external USB drive to internal HDD Shutdown – Shuts down the internal HDD safely, before powering off device
File Systems	FAT16 / FAT32 / EXT2 / NTFS (Read Only)
Disk Tools	Disk Partition / Disk Format / Disk Scan
Storage	FTP / Samba / Windows File Sharing Server
Download Tools	Schedule HTTP, FTP and BitTorrent files to download.
Multimedia	UPnP Server – Works with Networked Media Players and Gaming Consoles iTunes Server – Share Music to Computers
Other Network Features	DHCP Client and Server Fixed IP Mapping User Account Managements System Logs for FTP and Samba
Supported Operating Systems	Windows 2000 / XP / Vista / Mac OSX / Linux
Power Adapter	DC12V / 4A
Operating Temperature	0°C ~ 40°C / 85% Humidity
Storage Temperature	-20°C ~ 70°C / 85% Humidity
Dimensions	215mm(L) * 150mm(W) * 48mm(H)
Certifications	CE, FCC
Standard Compliance	IEEE 802.3, IEEE802.3x, IEEE 802.3u

12. Safety

FCC WARNING

This equipment may generate or use radio frequency energy. Changes or modifications to this equipment may cause harmful interference unless the modifications are expressly approved in the instruction manual. The user could lose the authority to operate this equipment if an unauthorized change or modification is made.

This equipment has been tested and found to comply with the limits for a Class B digital device, pursuant to Part 15 of the FCC Rules. These limits are designed to provide reasonable protection against harmful interference in a residential and commercial installation.

This equipment generates, uses, and can radiate radio frequency energy and, if not installed and used in accordance with the instructions, may cause harmful interference to radio communications. However, there is no guarantee that interference will not occur in a particular installation. If this equipment does cause harmful interference, then the user will be required to correct the interference at their own expense.

CE Declaration of conformity

This equipment complies with the requirements relating to electromagnetic compatibility, EN 55022 class B for ITE, the essential protection requirement of Council Directive 89/336/EEC on the approximation of the laws of the Member States relating to electromagnetic compatibility.

CE Marking Warning

Hereby, Digital Data Communications, declares that this (Model-no. FNS-1020) is in compliance with the essential requirements and other relevant provisions of Directive 1999/5/EC.

The CE-Declaration of Conformity can be downloaded at:

<http://www.levelone.eu/support.php>



13. General Public License

This product incorporates open source code into the software and therefore falls under the guidelines governed by the General Public License (GPL) agreement.

Adhering to the GPL requirements, the open source code and open source license for the source code are available for free download at <http://global.level1.com>.

If you would like a copy of the GPL or other open source code in this software on a physical CD medium, LevelOne (Digital Data Communications) offers to mail this CD to you upon request, for a price of US\$9.99 plus the cost of shipping.

GNU GENERAL PUBLIC LICENSE

Version 2, June 1991

Copyright (C) 1989, 1991 Free Software Foundation, Inc.
59 Temple Place, Suite 330, Boston, MA 02111-1307 USA

Everyone is permitted to copy and distribute verbatim copies
of this license document, but changing it is not allowed.

Preamble

The licenses for most software are designed to take away your freedom to share and change it. By contrast, the GNU General Public License is intended to guarantee your freedom to share and change free software--to make sure the software is free for all its users. This General Public License applies to most of the Free Software Foundation's software and to any other program whose authors commit to using it. (Some other Free Software Foundation software is covered by the GNU Library General Public License instead.) You can apply it to your programs, too.

When we speak of free software, we are referring to freedom, not price. Our General Public Licenses are designed to make sure that you have the freedom to distribute copies of free software (and charge for this service if you wish), that you receive source code or can get it if you want it, that you can change the software or use pieces of it in new free programs; and that you know you can do these things.

To protect your rights, we need to make restrictions that forbid anyone to deny you these rights or to ask you to surrender the rights. These restrictions translate to certain responsibilities for you if you distribute copies of the software, or if you modify it.

For example, if you distribute copies of such a program, whether gratis or for a fee, you must give the recipients all the rights that you have. You must make sure that they, too, receive or can get the source code. And you must show them these terms so they know their rights.

We protect your rights with two steps: (1) copyright the software, and (2) offer you this license which gives you legal permission to copy, distribute and/or modify the software.

Also, for each author's protection and ours, we want to make certain that everyone understands that there is no warranty for this free software. If the software is modified by someone else and passed on, we want its recipients to know that what they have is not the original, so that any problems introduced by others will not reflect on the original authors' reputations.

Finally, any free program is threatened constantly by software patents. We wish to avoid the danger that redistributors of a free program will individually obtain patent licenses, in effect making the program proprietary. To prevent this, we have made it clear that any patent must be licensed for everyone's free use or not licensed at all.

The precise terms and conditions for copying, distribution and modification follow.

GNU GENERAL PUBLIC LICENSE

TERMS AND CONDITIONS FOR COPYING, DISTRIBUTION AND MODIFICATION

0. This License applies to any program or other work which contains a notice placed by the copyright holder saying it may be distributed under the terms of this General Public License. The "Program", below, refers to any such program or work, and a "work based on the Program" means either the Program or any derivative work under copyright law: that is to say, a work containing the Program or a portion of it, either verbatim or with modifications and/or translated into another language. (Hereinafter, translation is included without limitation in the term "modification".) Each licensee is addressed as "you".

Activities other than copying, distribution and modification are not covered by this License; they are outside its scope. The act of running the Program is not restricted, and the output from the Program is covered only if its contents constitute a work based on the Program (independent of having been made by running the Program). Whether that is true depends on what the Program does.

1. You may copy and distribute verbatim copies of the Program's source code as you receive it, in any medium, provided that you conspicuously and appropriately publish on each copy an appropriate copyright notice and disclaimer of warranty; keep intact all the notices that refer to this License and to the absence of any warranty; and give any other recipients of the Program a copy of this License along with the Program.

You may charge a fee for the physical act of transferring a copy, and you may at your option offer warranty protection in exchange for a fee.

2. You may modify your copy or copies of the Program or any portion of it, thus forming a work based on the Program, and copy and distribute such modifications or work under the terms of Section 1 above, provided that you also meet all of these conditions:

- a) You must cause the modified files to carry prominent notices stating that you changed the files and the date of any change.
- b) You must cause any work that you distribute or publish, that in whole or in part contains or is derived from the Program or any part thereof, to be licensed as a whole at no charge to all third parties under the terms of this License.
- c) If the modified program normally reads commands interactively when run, you must cause it, when started running for such interactive use in the most ordinary way, to print or display an announcement including an appropriate copyright notice and a notice that there is no warranty (or else, saying that you provide a warranty) and that users may redistribute the program under these conditions, and telling the user how to view a copy of this License. (Exception: if the Program itself is interactive but does not normally print such an announcement, your work based on the Program is not required to print an announcement.)

These requirements apply to the modified work as a whole. If identifiable sections of that work are not derived from the Program, and can be reasonably considered independent and separate works in themselves, then this License, and its terms, do not apply to those sections when you distribute them as separate works. But when you distribute the same sections as part of a whole which is a work based on the Program, the distribution of the whole must be on the terms of this License, whose permissions for other licensees extend to the entire whole, and thus to each and every part regardless of who wrote it.

Thus, it is not the intent of this section to claim rights or contest your rights to work written entirely by you; rather, the intent is to exercise the right to control the distribution of derivative or collective works based on the Program.

In addition, mere aggregation of another work not based on the Program with the Program (or with a work based on the Program) on a volume of a storage or distribution medium does not bring the other work under the scope of this License.

3. You may copy and distribute the Program (or a work based on it, under Section 2) in object code or executable form under the terms of Sections 1 and 2 above provided that you also do one of the following:
- a) Accompany it with the complete corresponding machine-readable source code, which must be distributed under the terms of Sections 1 and 2 above on a medium customarily used for software interchange; or,
 - b) Accompany it with a written offer, valid for at least three years, to give any third party, for a charge no more than your cost of physically performing source distribution, a complete machine-readable copy of the corresponding source code, to be distributed under the terms of Sections 1 and 2 above on a medium customarily used for software interchange; or,
 - c) Accompany it with the information you received as to the offer to distribute corresponding source code. (This alternative is allowed only for noncommercial distribution and only if you received the program in object code or executable form with such an offer, in accord with Subsection b above.)

The source code for a work means the preferred form of the work for making modifications to it. For an executable work, complete source code means all the source code for all modules it contains, plus any associated interface definition files, plus the scripts used to control compilation and installation of the executable. However, as a special exception, the source code distributed need not include anything that is normally distributed (in either source or binary form) with the major components (compiler, kernel, and so on) of the operating system on which the executable runs, unless that component itself accompanies the executable.

If distribution of executable or object code is made by offering access to copy from a designated place, then offering equivalent access to copy the source code from the same place counts as distribution of the source code, even though third parties are not compelled to copy the source along with the object code.

4. You may not copy, modify, sublicense, or distribute the Program except as expressly provided under this License. Any attempt otherwise to copy, modify, sublicense or distribute the Program is void, and will automatically terminate your rights under this License. However, parties who have received copies, or rights, from you under this License will not have their licenses terminated so long as such parties remain in full compliance.

5. You are not required to accept this License, since you have not signed it. However, nothing else grants you permission to modify or distribute the Program or its derivative works. These actions are prohibited by law if you do not accept this License. Therefore, by modifying or distributing the Program (or any work based on the Program), you indicate your acceptance of this License to do so, and all its terms and conditions for copying, distributing or modifying the Program or works based on it.

6. Each time you redistribute the Program (or any work based on the Program), the recipient automatically receives a license from the original licensor to copy, distribute or modify the Program subject to these terms and conditions. You may not impose any further restrictions on the recipients' exercise of the rights granted herein. You are not responsible for enforcing compliance by third parties to this License.

7. If, as a consequence of a court judgment or allegation of patent infringement or for any other reason (not limited to patent issues), conditions are imposed on you (whether by court order, agreement or otherwise) that contradict the conditions of this License, they do not excuse you from the conditions of this License. If you cannot distribute so as to satisfy simultaneously your obligations under this License and any other pertinent obligations, then as a consequence you may not distribute the Program at all. For example, if a patent license would not permit royalty-free redistribution of the Program by all those who receive copies directly or indirectly through you, then the only way you could satisfy both it and this License would be to refrain entirely from distribution of the Program.

If any portion of this section is held invalid or unenforceable under any particular circumstance, the balance of the section is intended to apply and the section as a whole is intended to apply in other circumstances.

It is not the purpose of this section to induce you to infringe any patents or other property right claims or to contest validity of any such claims; this section has the sole purpose of protecting the integrity of the free software distribution system, which is implemented by public license practices. Many people have made generous contributions to the wide range of software distributed through that system in reliance on consistent application of that system; it is up to the author/donor to decide if he or she is willing to distribute software through any other system and a licensee cannot impose that choice.

This section is intended to make thoroughly clear what is believed to be a consequence of the rest of this License.

8. If the distribution and/or use of the Program is restricted in certain countries either by patents or by copyrighted interfaces, the original copyright holder who places the Program under this License may add an explicit geographical distribution limitation excluding those countries, so that distribution is permitted only in or among countries not thus excluded. In such case, this License incorporates the limitation as if written in the body of this License.

9. The Free Software Foundation may publish revised and/or new versions of the General Public License from time to time. Such new versions will be similar in spirit to the present version, but may differ in detail to address new problems or concerns.

Each version is given a distinguishing version number. If the Program specifies a version number of this License which applies to it and "any later version", you have the option of following the terms and conditions either of that version or of any later version published by the Free Software Foundation. If the Program does not specify a version number of this License, you may choose any version ever published by the Free Software Foundation.

10. If you wish to incorporate parts of the Program into other free programs whose distribution conditions are different, write to the author to ask for permission. For software which is copyrighted by the Free Software Foundation, write to the Free Software Foundation; we sometimes make exceptions for this. Our decision will be guided by the two goals of preserving the free status of all derivatives of our free software and of promoting the sharing and reuse of software generally.

NO WARRANTY

11. BECAUSE THE PROGRAM IS LICENSED FREE OF CHARGE, THERE IS NO WARRANTY FOR THE PROGRAM, TO THE EXTENT PERMITTED BY APPLICABLE LAW. EXCEPT WHEN OTHERWISE STATED IN WRITING THE COPYRIGHT HOLDERS AND/OR OTHER PARTIES PROVIDE THE PROGRAM "AS IS" WITHOUT WARRANTY OF ANY KIND, EITHER EXPRESSED OR IMPLIED, INCLUDING, BUT NOT LIMITED TO, THE IMPLIED WARRANTIES OF MERCHANTABILITY AND FITNESS FOR A PARTICULAR PURPOSE. THE ENTIRE RISK AS TO THE QUALITY AND PERFORMANCE OF THE PROGRAM IS WITH YOU. SHOULD THE PROGRAM PROVE DEFECTIVE, YOU ASSUME THE COST OF ALL NECESSARY SERVICING, REPAIR OR CORRECTION.

12. IN NO EVENT UNLESS REQUIRED BY APPLICABLE LAW OR AGREED TO IN WRITING WILL ANY COPYRIGHT HOLDER, OR ANY OTHER PARTY WHO MAY MODIFY AND/OR REDISTRIBUTE THE PROGRAM AS PERMITTED ABOVE, BE LIABLE TO YOU FOR DAMAGES, INCLUDING ANY GENERAL, SPECIAL, INCIDENTAL OR CONSEQUENTIAL DAMAGES ARISING OUT OF THE USE OR INABILITY TO USE THE PROGRAM (INCLUDING BUT NOT LIMITED TO LOSS OF DATA OR DATA BEING RENDERED INACCURATE OR LOSSES SUSTAINED BY YOU OR THIRD PARTIES OR A FAILURE OF THE PROGRAM TO OPERATE WITH ANY OTHER PROGRAMS), EVEN IF SUCH HOLDER OR OTHER PARTY HAS BEEN ADVISED OF THE POSSIBILITY OF SUCH DAMAGES.

END OF TERMS AND CONDITIONS