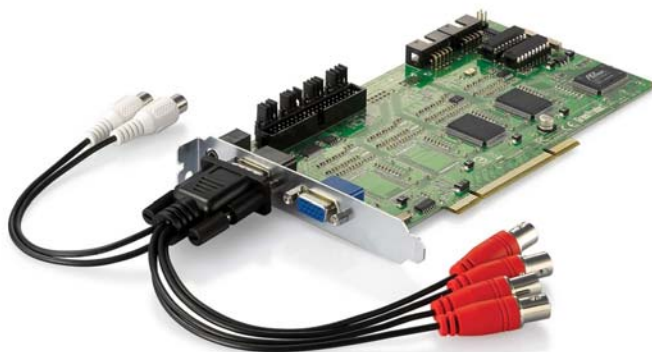




LevelOne

FCS-8005 Analog Camera Capture Card



User's Manual

Table of Contents

Package Contents-----	P.2
System Requirements-----	P.2
Physical Description-----	P.2
Install the FCS-8005 to your PC-----	P.3
Install the driver of FCS-8005-----	P.3
Check DirectX version-----	P.6
Install IP CamSecure-----	P.6
Technical Specifications-----	P.9
Appendix-----	P.10

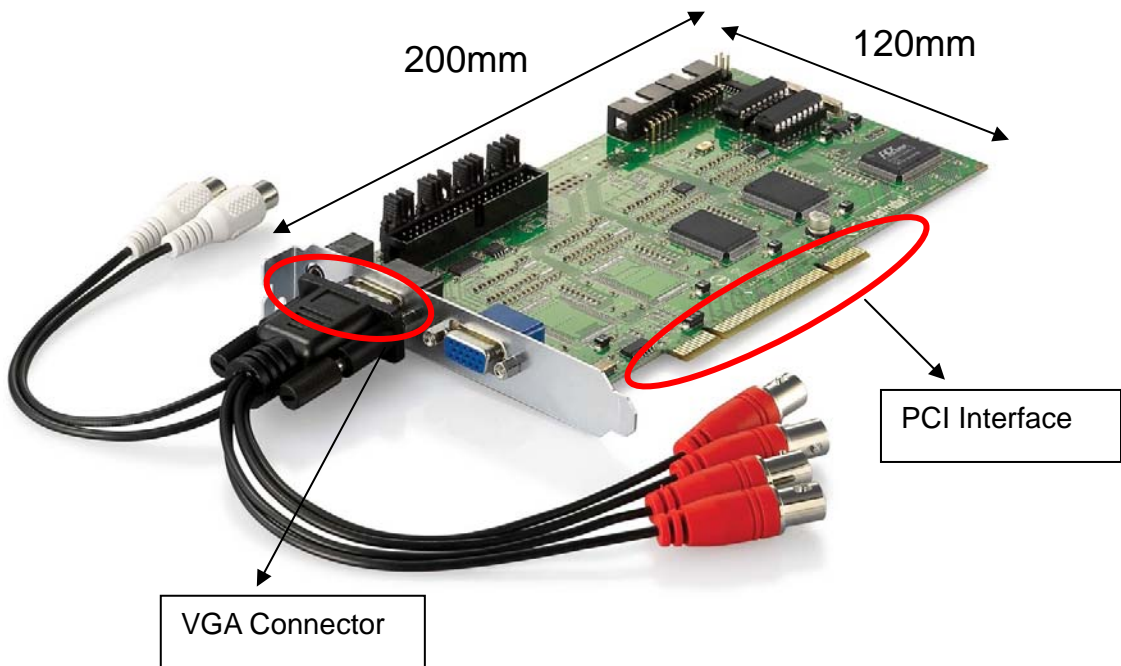
Package Contents

- FCS-8005
- Audio/Video Cable
- CD Manual / Driver / Utility
- Quick Installation Guide

System Requirements

FCS-8005	
CPU	Pentium4 2.8 GHz
RAM	512 MB
Motherboard	Intel 945 or 965 chip, Intel Chipset and ASUS motherboard recommended
Display	ATI Radeon 9200, nVIDIA GeForce FX-5200, Intel 945 / 965, or above (ATI recommended)
Hard Disk	80 GB or above
OS	Windows 2000 / Windows XP / Windows 2003 / Windows VISTA

Physical Description



Install the FCS-8005 to your PC

Step1: Insert the card onto an empty PCI slot. Connect the Audio/Video cable to the connector in the same color.

Step 2: Turn on your PC and start Windows.

Connect the Audio/Video Cable

There are two audio and four video input connectors on the **Audio/Video Cable**.

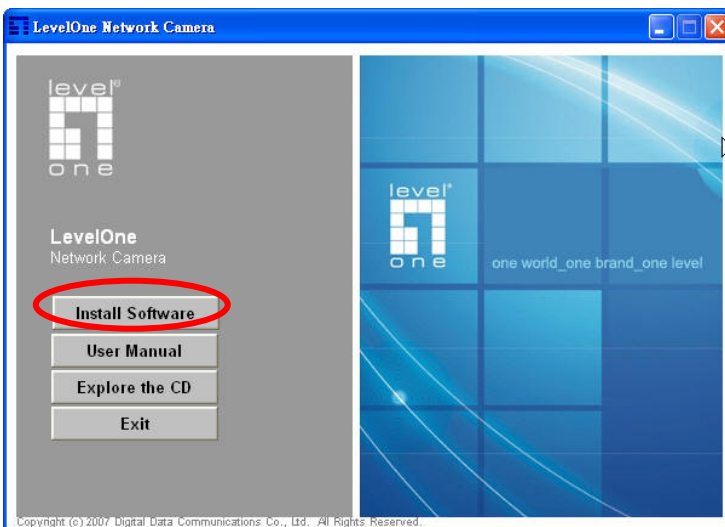
Connect the black cable to the black connector.

The audio input connectors of the black cable are in white; the video input connectors are in red.

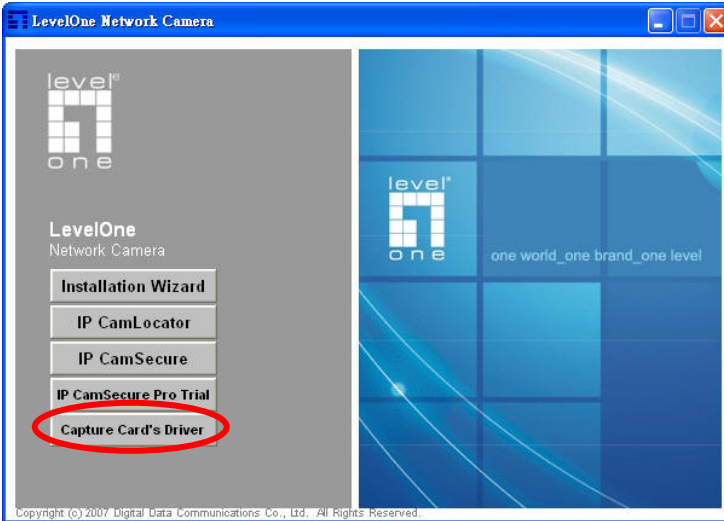
Install the driver of FCS-8005

Insert the included CD into CD-ROM. The setup page should load automatically. If it does not, please select your CD-ROM drive manually to run **autorun.exe**.

Click "Install Software"

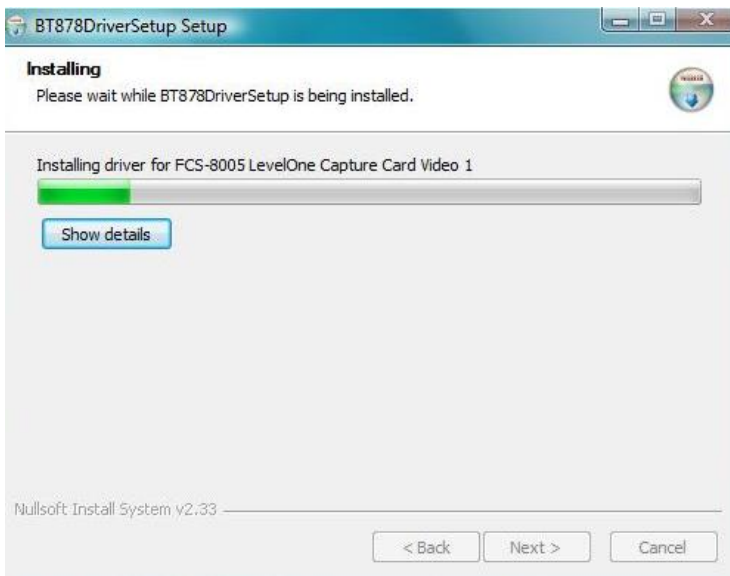


Click "Capture Card's driver"

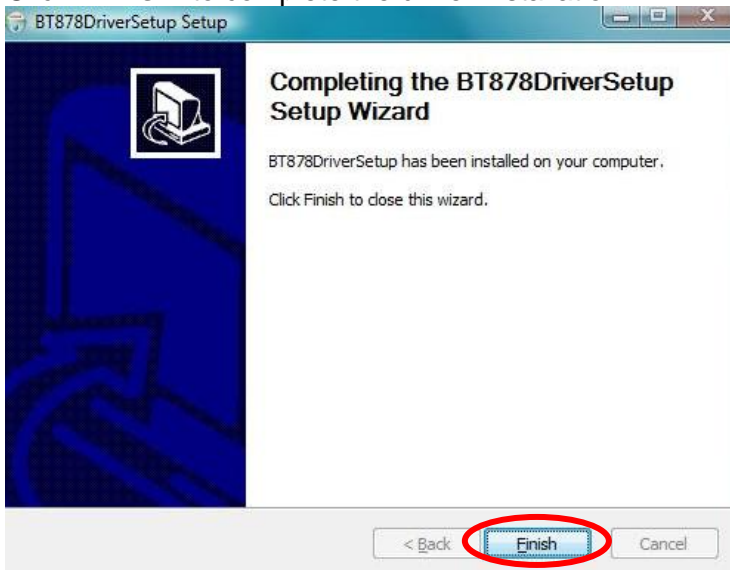


Click "Install" to install the driver



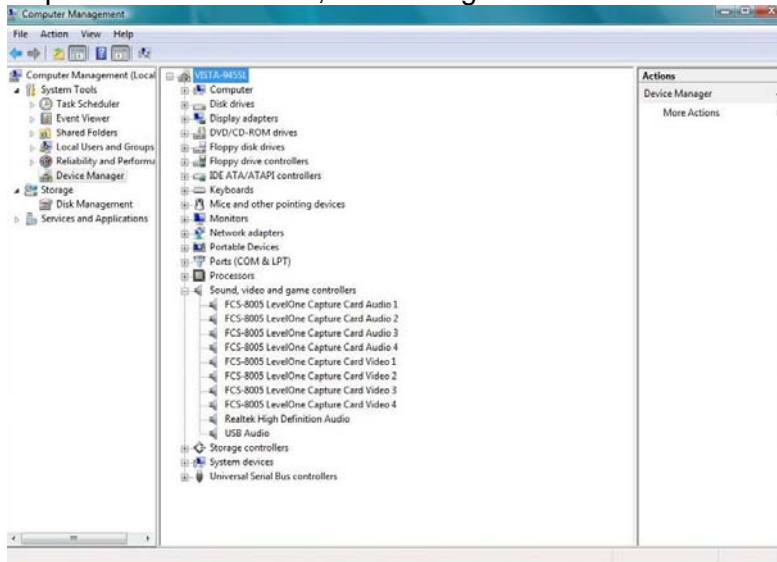


Click **“Finish”** to complete the driver installation.



After driver being installed, please restart your PC.

You may check the device from Device Manger. You will find FCS-8005 LevelOne Capture Card in “Sound,video and game controllers”.

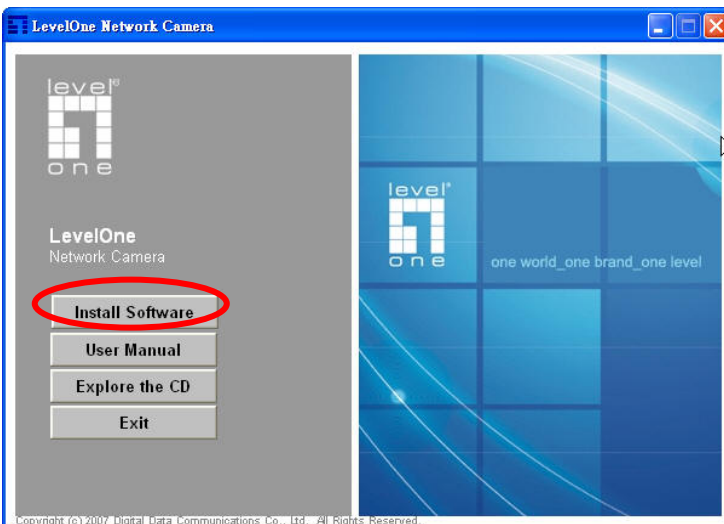


Check DirectX version

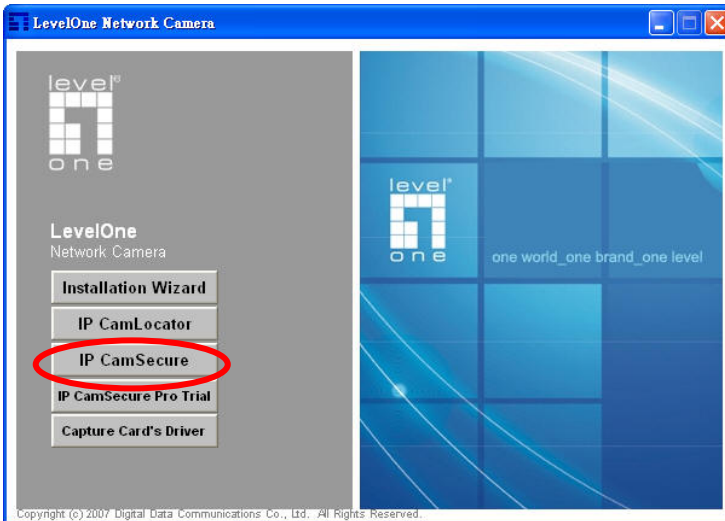
Run **dxdiag.exe** from start menu ‘**Start-> Run**’ to check your DirectX version. If the installed version is less than 9.0, install DirectX 9.0 from the CD-ROM **directx9/** directory.

Install IP CamSecure

Click”Install Software”

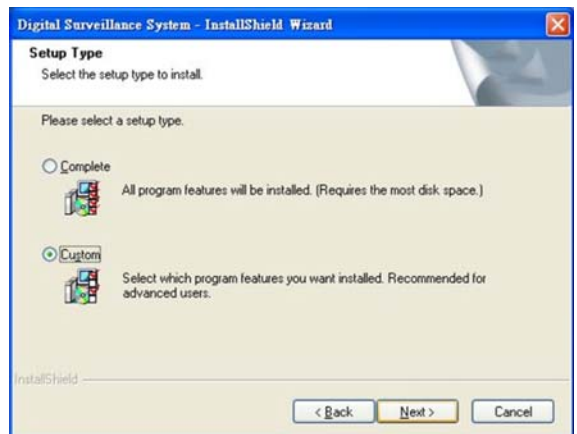


Click "IP CamSecure"

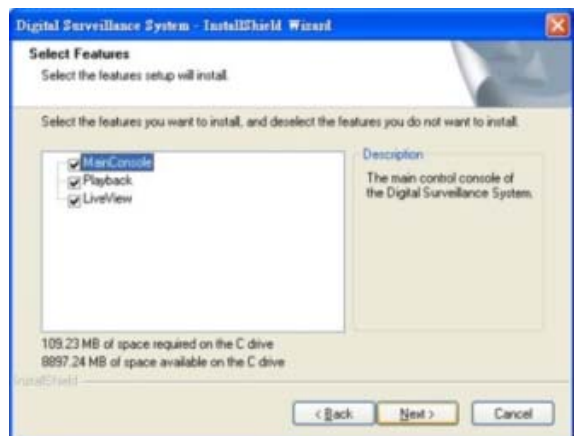


Custom Setup Type:

You may install the system to the directory of your preference and choose which feature(s) you want to install to the PC.



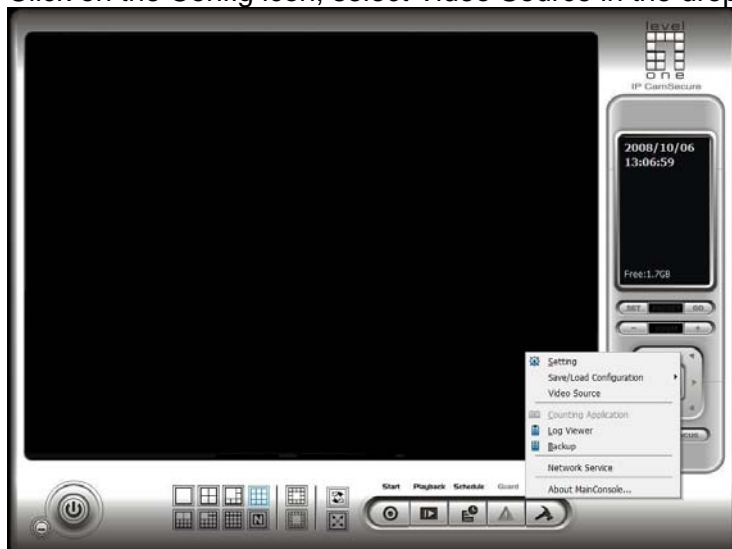
Hint: You may, for instance, install only Playback and/or LiveView on the PC at home or other remote site from which you do not install the camera but are going to watch them remotely.



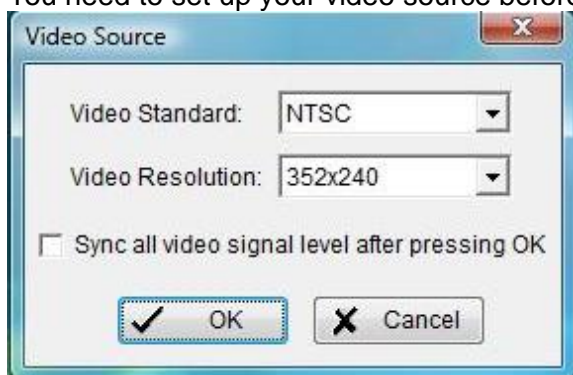
Run IP CamSecure

After installing IP CamSecure, run “main console”

Click on the Config icon, select Video Source in the drop-down menu.



You need to set up your video source before you start to activate schedule recording .



Video Standard: Select the Standard that you apply, from NTSC and PAL.

Video Resolution: Select the resolution you want.

For more details about how to use IP CamSecure, please refer to the user's manual of the software.

Technical Specifications

Video Input

4

Audio Input

2

Maximum Cards in one PC (FCS-8005 only)

4

Display Rate

60fps(NTSC)

50fps(PAL)

Recording Rate

60fps(NTSC)

50fps(PAL)

Video Resolution

704x480/640x480/352x240(NTSC)

704x576/640x576/352x288(PAL)

Compression Mode

Software Compression MPEG4

Hardware Watchdog

Yes

Dimension

200(W)x120(H)mm

Appendix

Watchdog Installation

