



LevelOne

FCS-8004 4-Port Hybrid Capture Card

User Manual

Ver 1.0.0 - 0609

Table of Contents

Package Contents-----	P.2
System Requirements-----	P.2
Physical Description-----	P.2
Install the FCS-8004 to your PC-----	P.3
Install the driver of FCS-8004-----	P.4
Check DirectX version-----	P.5
Install IP CamSecure-----	P.5

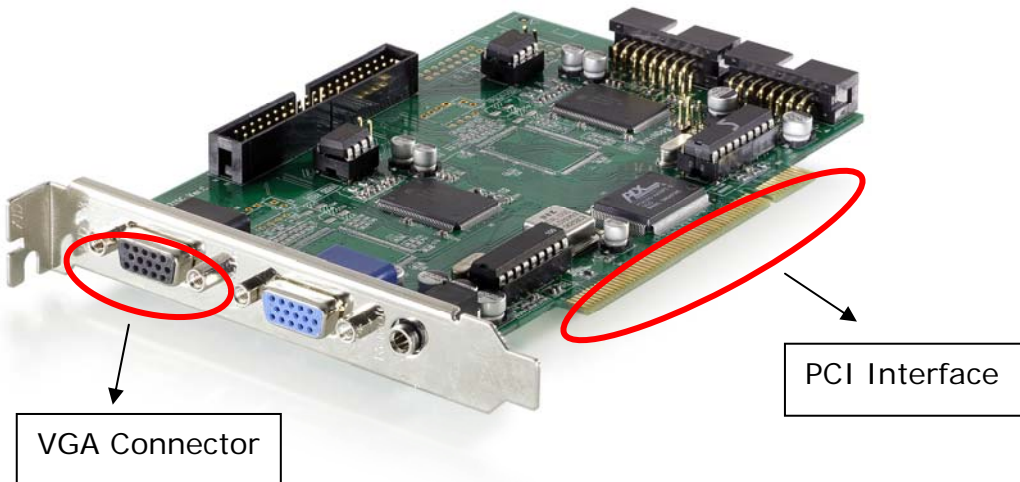
Package Contents

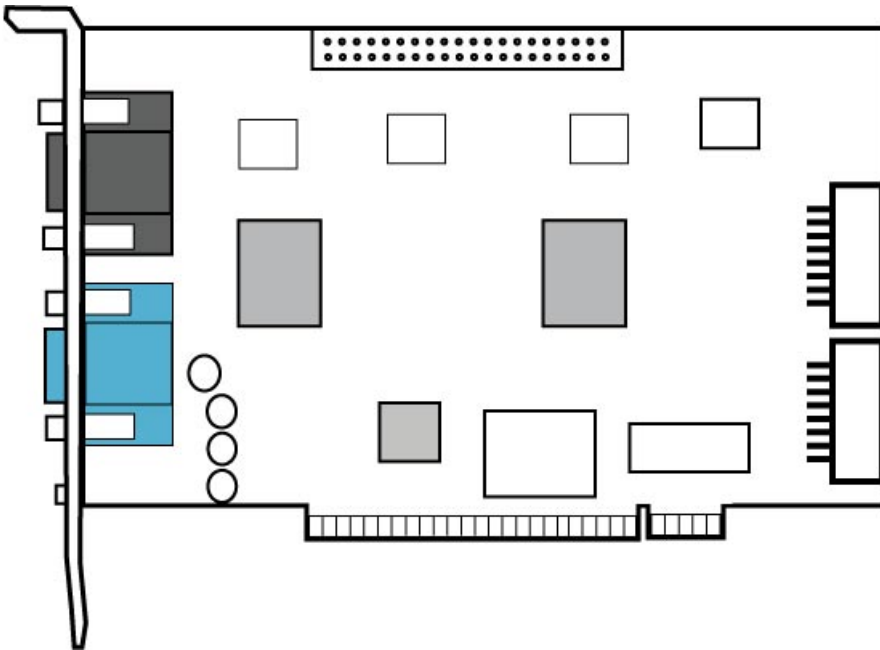
- FCS-8004
- Audio/Video Cables
- CD Manual / Driver / Utility
- Quick Installation Guide

System Requirements

FCS-8004	
CPU	Intel P4 2.4 GHz
RAM	512 MB
Mother-board	Intel 845 or 865 chip, Intel Chipset recommended
Display	ATI Radeon 9200, nVIDIA GeForce FX-5200, Intel 845G/865G, or above (ATI recommended)
Hard Disk	80 GB or above
OS	MS Windows 2000 / XP

Physical Description





Install the FCS-8004 to your PC

Step1: Insert the card onto an empty PCI slot. Connect the Audio/Video cables to the connectors in the same color.

Step 2: Turn on your PC and start Windows.

Connect the Audio/Video Cable

There are two audio and four video input connectors on the **Audio/Video Cable**.

Connect the black cable to the black connector.

The audio input connectors of the black cable are with white wires and marks of "Aud" on them; the video input connectors are with black wires and the marks of "Vid".

Install the driver of FCS-8004

Insert the included CD into CD-ROM. The setup page should load automatically. If it does not, please select your CD-ROM drive manually to run **autorun.exe**.

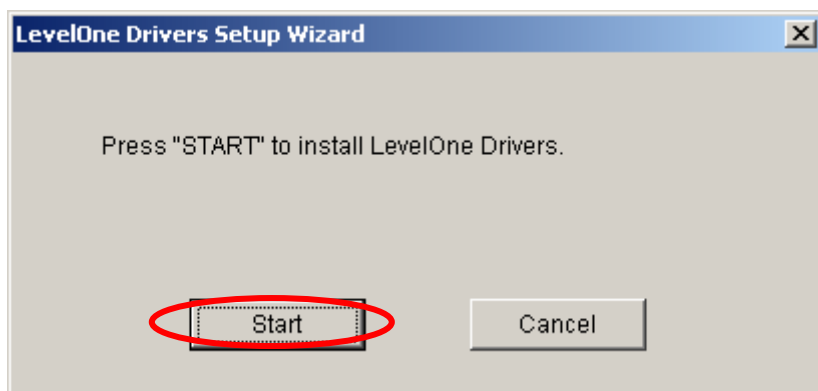
Click "Install Software"

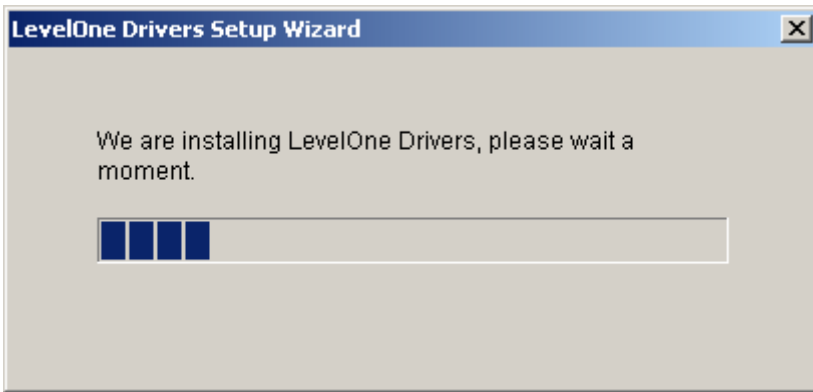


Click "Capture Card's driver"

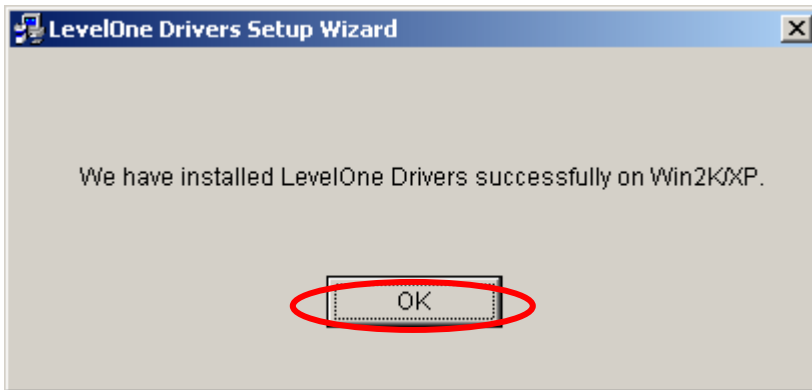


Click "Start" to install the driver





Click **“OK”** to complete the driver installation.



After driver being installed, please restart your PC.

Check DirectX version

Run **dxdiag.exe** from start menu **‘Start-> Run’** to check your DirectX version. If the installed version is less than 9.0, install DirectX 9.0 from the CD-ROM **directx9/** directory.

Install IP CamSecure

Click **“Install Software”**

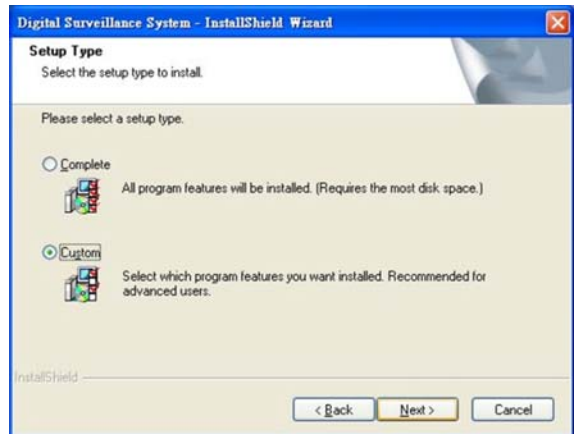


Click "IP CamSecure"



Custom Setup Type:

You may install the system to the directory of your preference and choose which feature(s) you want to install to the PC.



Hint: You may, for instance, install only Playback and/or LiveView on the PC at home or other remote site from which you do not install the camera but are going to watch them remotely.

