



FCS-3061

Megapixel Day/Night PoE Dome Network Camera

User's Manual

H/W: V2.0

Product name:	FCS-3061-V2
Release Date:	2012/12/13
Manual Revision:	V1.0

Default Settings

IP Address	DHCP
Username	admin
Password	admin

Table of Contents

Package Contents	1
Hardware	2
Device Appearance	2
LED Indicators	3
DI/DO Diagram	3
Hardware Reset	4
Hardware Installation	5
Camera Connection	11
Software Installation	13
Access to the Network Camera	21
Check Network Settings	21
Add Password to prevent Unauthorized Access	21
Authentication	22
Installing plug-in	22
Live View	23
Configuration	26
Camera/Video/Audio	26
Camera	26
Video	30
Audio	34
Network	35
IP Settings	35
UPnP	36
DDNS (dynamic domain name service)	36
HTTP/HTTPS	38
Multicast	39
EasyLink	40
Event	41
Event Settings	41
Motion Detection	46
Digital Input (DI)	48
Notifications	49
FTP Settings	49
E-mail Settings	50
Samba Settings	51
HTTP Settings	51

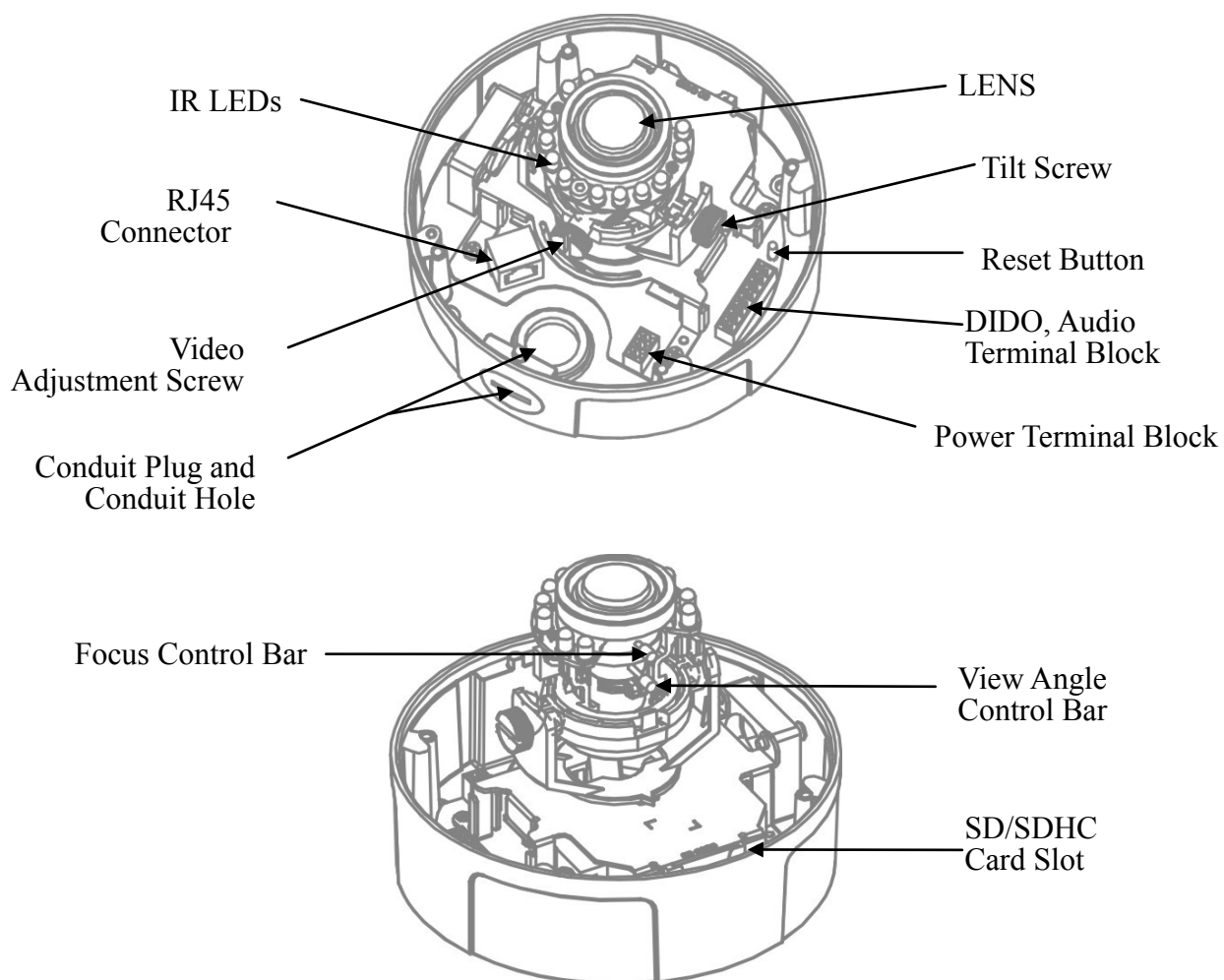
Digital Output (DO).....	52
Video Clip.....	53
SD Card.....	54
Storage Management.....	54
Maintenance.....	55
Language	55
User Management.....	55
IP Filter.....	56
Firmware Upgrade.....	56
Configuration.....	57
Reset to Default.....	58
Reboot.....	58
System	59
System Log	59
Date and Time.....	60
Save File Folder	61
Device Information	61

Package Contents

- ◆ FCS-3061
- ◆ Power Adapter
- ◆ Quick Installation Guide
- ◆ CD Manual/Utility

Hardware

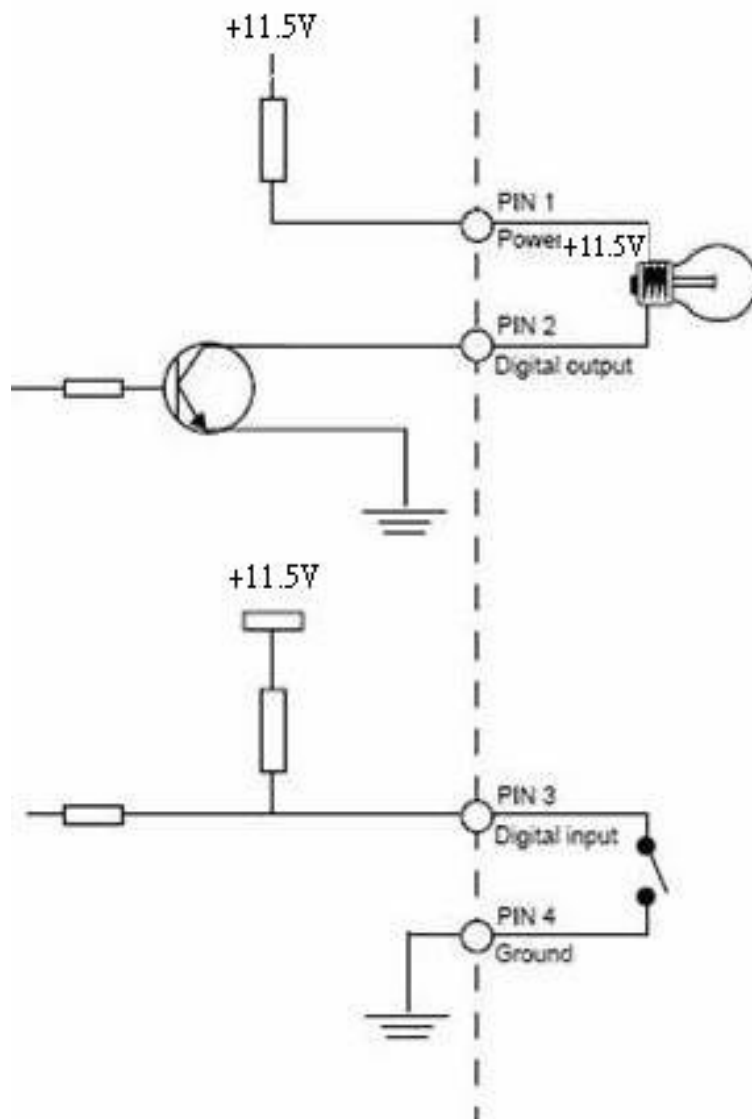
Device Appearance



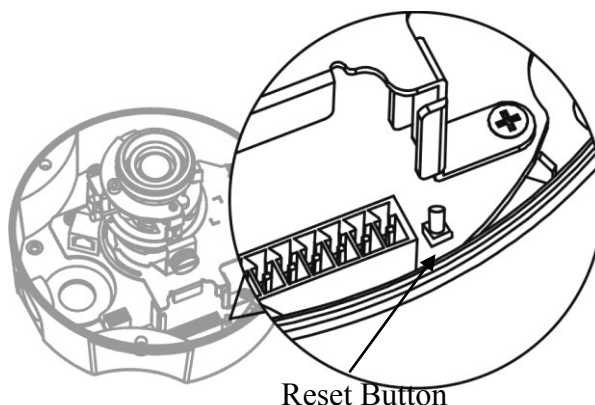
LED Indicators

Function	LED Behavior	Description
Power LED	Continuous illumination	Power on
Power LED	Unit	Power off
Link LED	Continuous illumination (Orange)	Link
Link LED	Blinking (Orange)	Connecting

DI/DO Diagram



Hardware Reset



The Reset Button can be used to reboot the camera or restore it to factory default settings. If the camera experiences a problem, rebooting the camera may correct the problem. If the problem remains, please restore the camera to factory default settings and reinstall the software.

To Reboot

Press and hold the Reset Button for one second using a paper clip or thin object. Wait for the camera to reboot.

To Restore

Press and hold the Reset Button for ten seconds until the LED light turns off. When successful restored, the LED will be blue during normal operation.

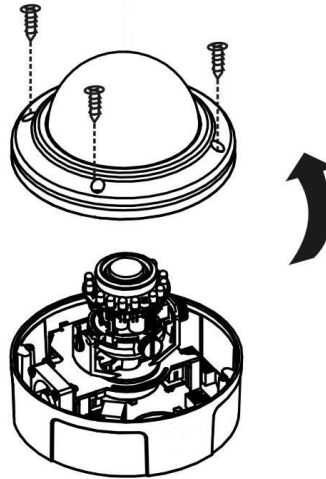


NOTE - By restoring the camera, all settings will be restored to the factory default settings.

Hardware Installation

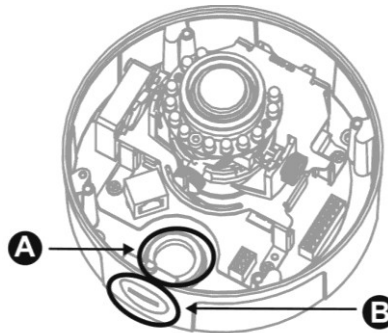
a. Remove the dome cover:

Unscrew the screws and remove the dome cover from the camera device.



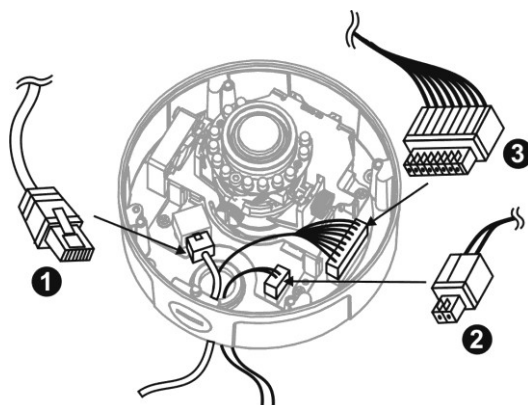
b. PoE, Power, DIDO, Audio Connection

i. Insert the PoE, DIDO, and Audio cable through conduit hole A or B.



ii. Connect the PoE (1), DIDO (2), and Audio (3) Cables to their

respective terminals. See below for more details regarding the DIDO and Audio connection.



1) Power over Ethernet (PoE) Connection

2) Power Adapter Connection

Please refer to the definition of the terminal blocks below. It is also printed on the motherboard.

Terminal Block	
Pin No.	Function
Pin 1	12V
Pin 2	GND

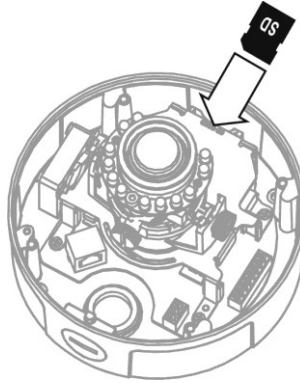
1) DIDO and Audio Connection

Please refer to the definition of the terminal blocks below. It is also printed on the motherboard.

Terminal Block	
Pin No.	Function
Pin 1	5V
Pin 2	D_0
Pin 3	D_I
Pin 4	DIDO GND
Pin 5	Audio OUT
Pin 6	DGND
Pin 7	Mic/Line in
Pin 8	DGND

c. For SD/SDHC card installation:

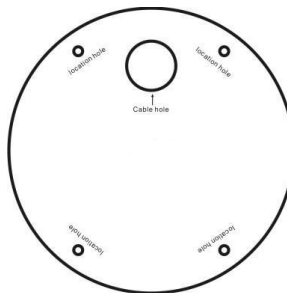
Insert the SD/SDHC card into the SD/SDHC card slot.



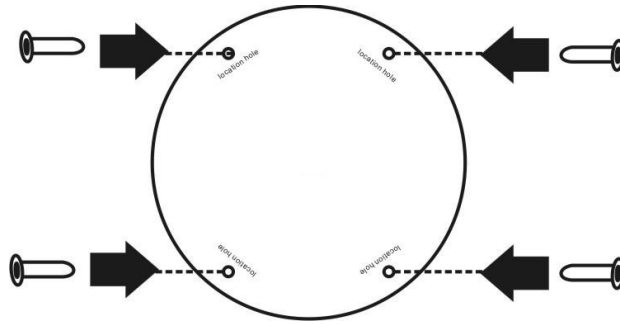
NOTE – The SD/SDHC card is not included in the product package and needs to be purchased separately.

d. For wall installation:

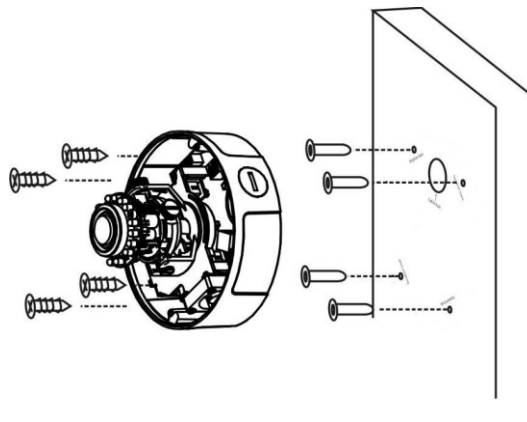
- i. Chose the location on the wall to place the camera.
- ii. Drill four holes through the center of the four location holes on the sticker.



- iii. Hammer the four plastic anchors which are provided in the product package into the four location holes.

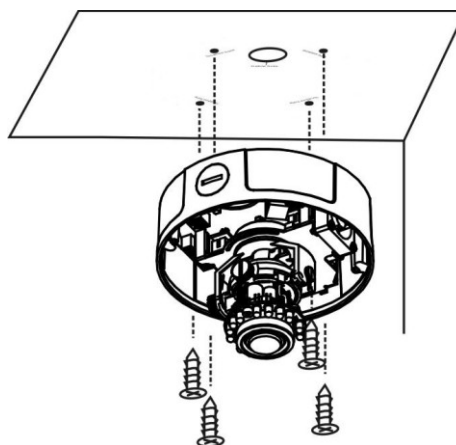


- iv. Mount the camera on the wall and position the four screw slots over the plastic anchors. Insert the screws into the holes and use the screwdriver to tighten the screws clockwise until they are secure.



e. For ceiling installation:

Mount the camera device on the desired location. Use the screwdriver from the product package to tighten the four included screws clockwise through the four holes on each side of the device as shown below. The best place to mount the camera is into a ceiling stud.



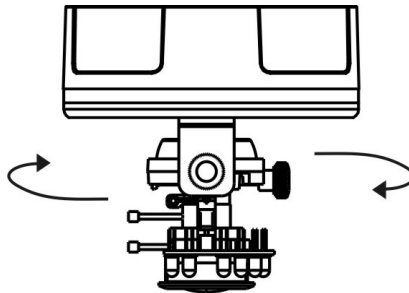


WARNING: Do not mount the camera on a soft material. The camera may fall and be damaged.

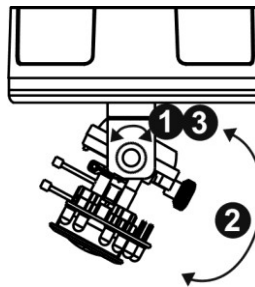
f. Adjust the Lens Focus Range and Zoom Viewing

1) Adjust the lens angle

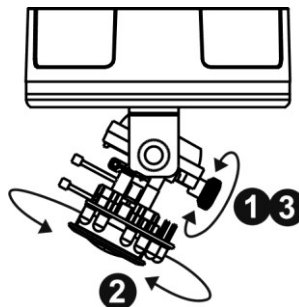
- i. The lens can be rotated to the left or right.



- ii. Release the tilt screw on both side of the device to rotate the lens up or down. After completion, tighten the tilt screw.



- iii. Release the video adjustment screw and to adjust the lens direction. After completion, tighten the video adjustment screw.

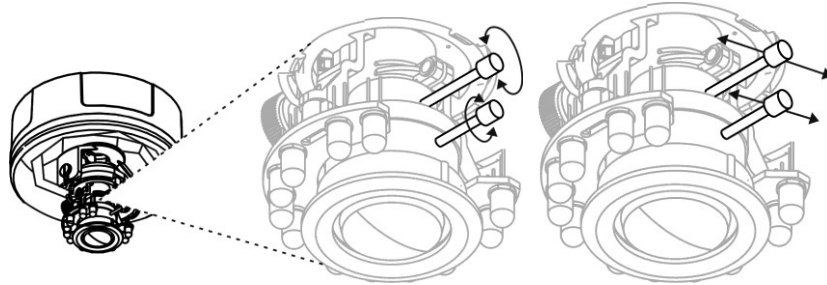


2) Adjust the view angle and focus range

- i. Release the viewing angle controller bar and then slide it left or right to adjust the viewing angle. After completion, tighten the viewing

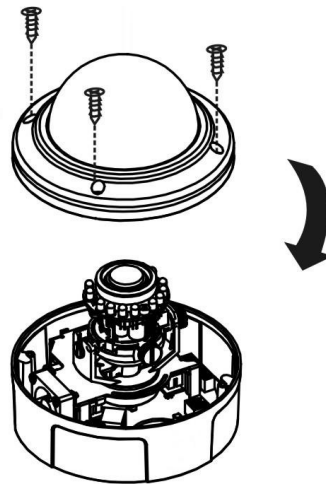
angle controller.

- ii. Release the focus controller bar and slide it left or right to adjust the focus range. After completion, tighten the focus controller.



g. Complete the Installation

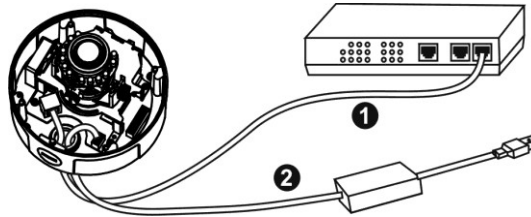
- a. Place the dome cover on the camera device and slowly turn it until it is in the desired position.
- b. Fasten the dome screws to secure the dome cover to the camera device.



Camera Connection

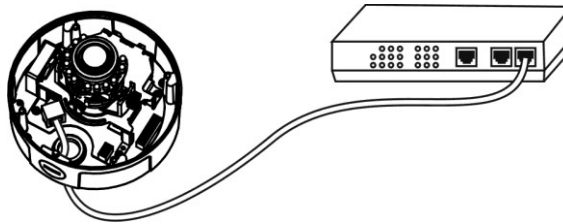
a. Basic Connection (Without PoE)

- b. Connect the camera device to the Ethernet hub using a RJ45 Ethernet cable.
- c. Connect the power adaptor to the camera device.

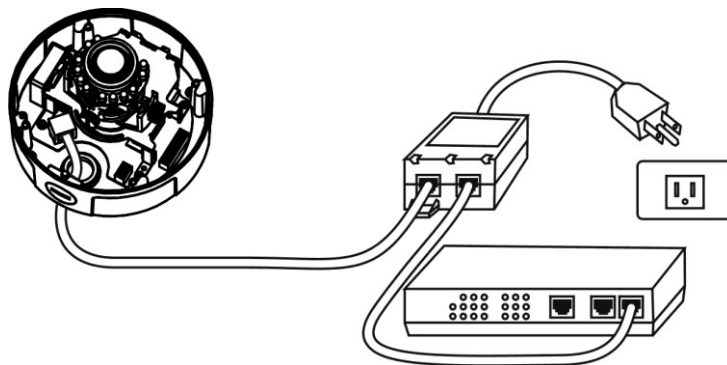


b. Power over Ethernet (PoE) Connection

- a. Connect the camera to a PoE-enabled hub using a single Ethernet cable.



- b. Connect the camera to a non-PoE hub using the PoE Injector.



System Requirements

Operating System:

Microsoft Windows XP Home Edition SP2

Microsoft Windows XP Professional SP2

Computer:

IBM PC/AT Compatible

CPU:

Pentium 3GHz or faster

Memory:

1024 MB or more

Monitor:

1024 x 768 pixels or more, 24-bit True color or better

Network Interface:

10/100Mbps Network interface card must be installed

Web Browser:

Microsoft Internet Explorer 6.0 SP2 or higher

Adobe Reader:

Adobe Reader 8.0 or higher

Audio:

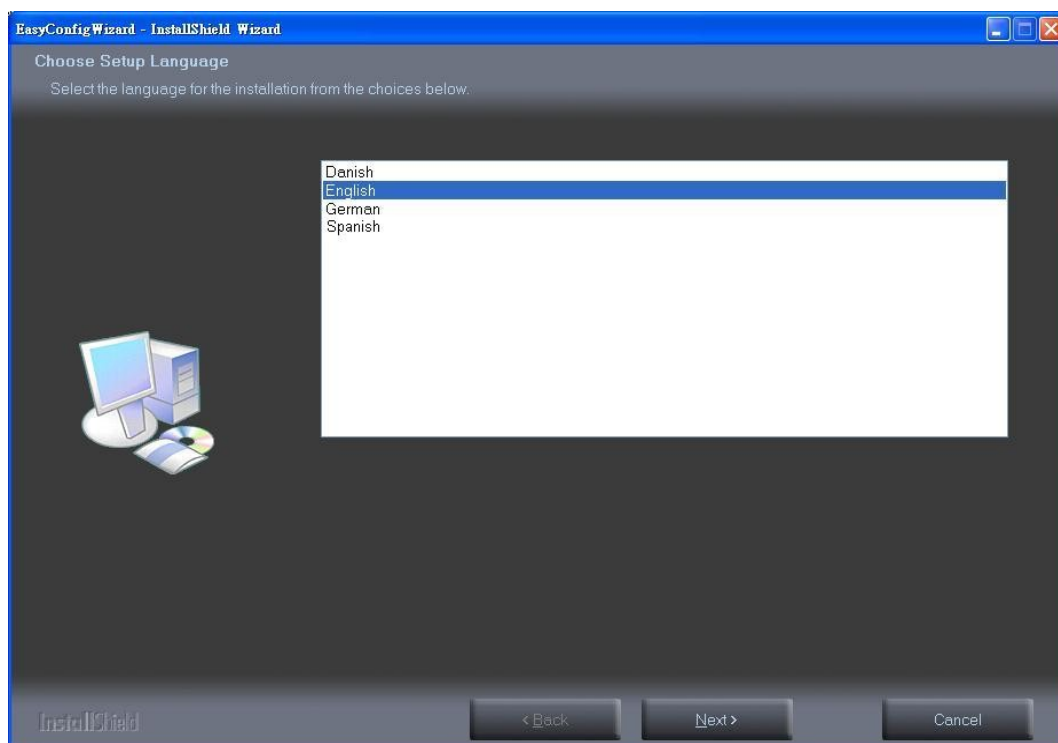
The audio function will not work if a sound card is not installed in the PC. Audio may be interrupted depending on network traffic.

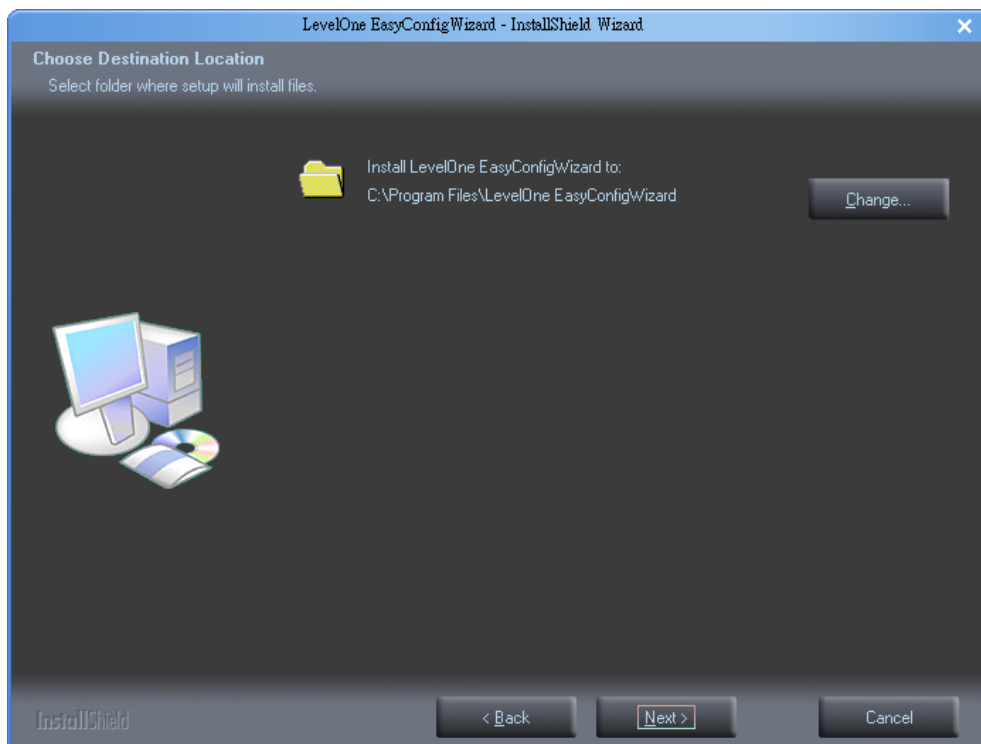
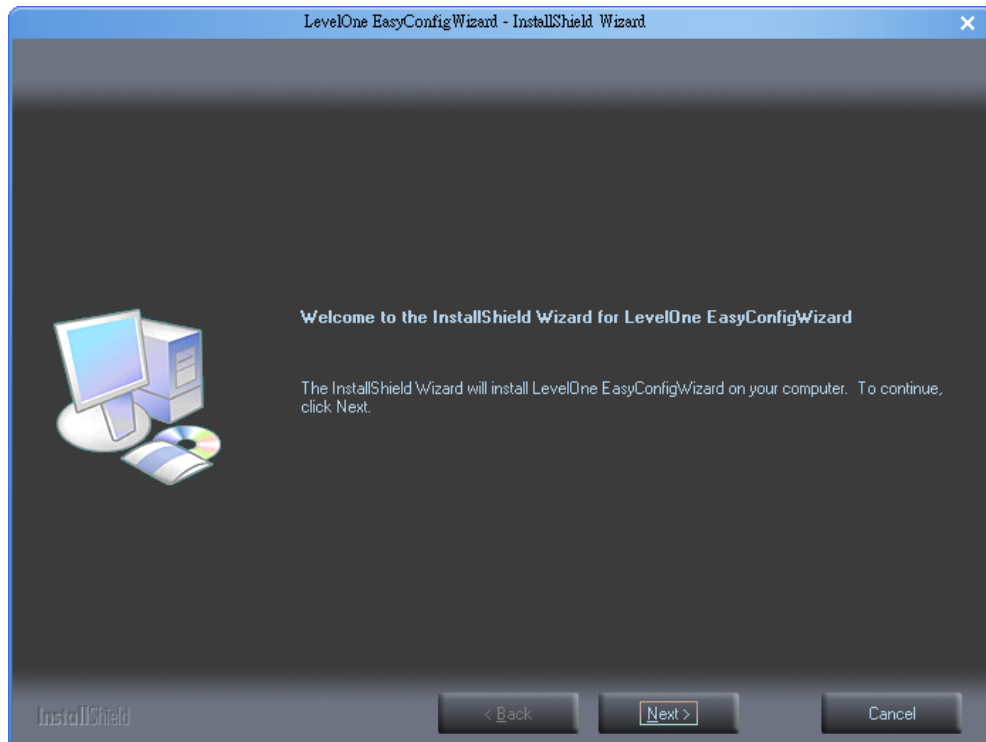
Software Installation

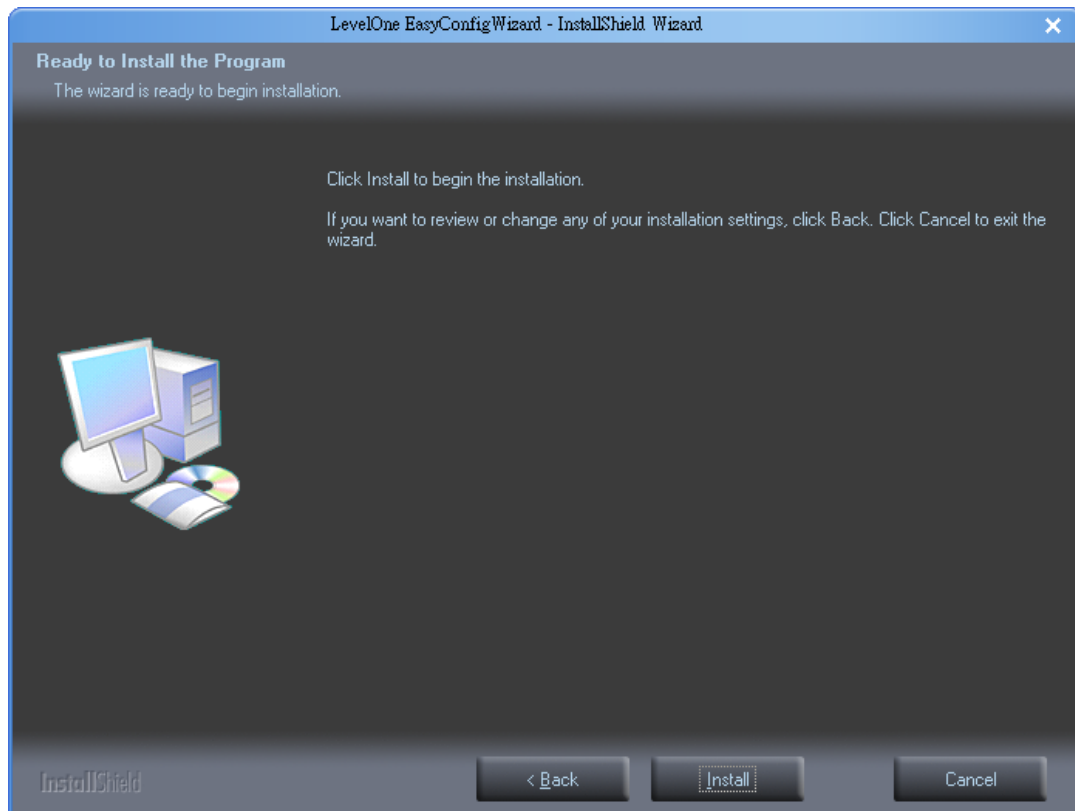
In this manual, "User" refers to whoever has access to the Network Camera, and "Administrator" refers to the person who can configure the Network Camera and grant user access to the camera.

After hardware connection checking, the users can run the Installation Wizard program included in the product CD-ROM to automatically search for the Network Camera in the Intranet. There may be many Network Cameras in the local network. Users can differentiate the Network Cameras with the serial number. **The serial number is printed on the labels on the carton and the bottom of the Network Camera body.**

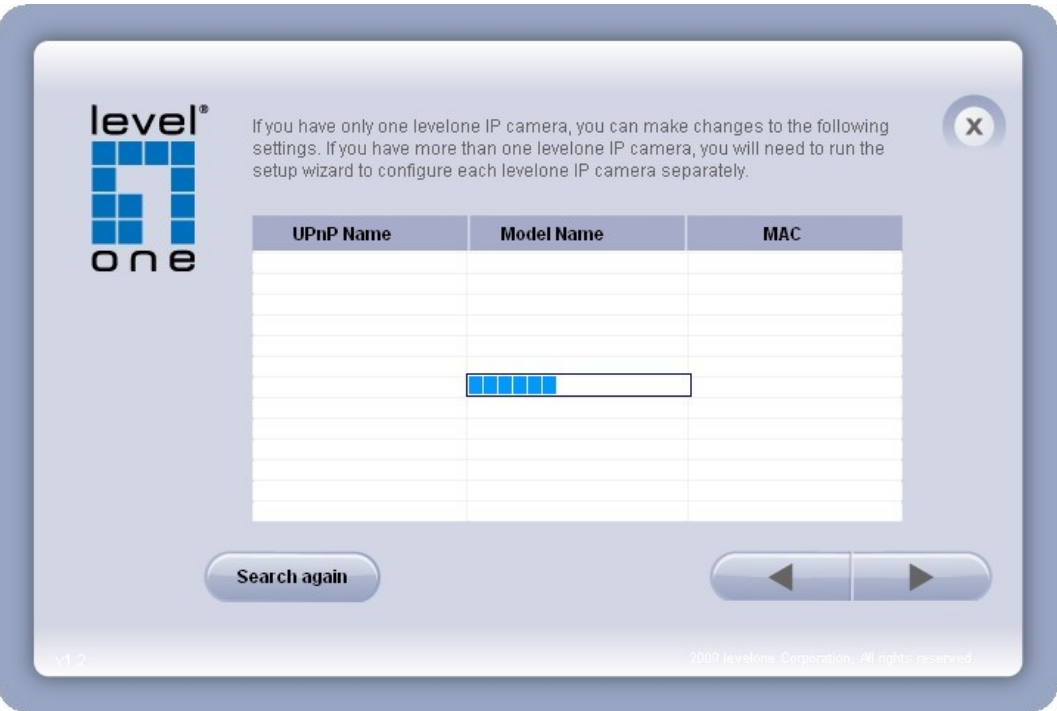
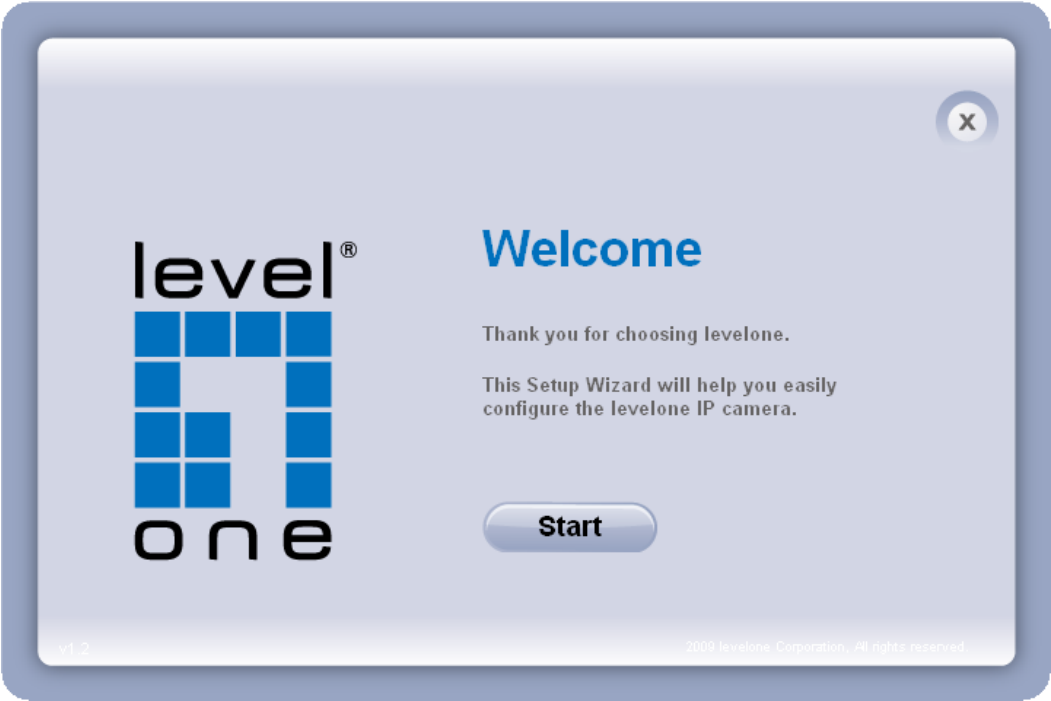
1. Insert the Installation CD into the CD-ROM driver. Click install and shows the welcome screen. Follow the steps to install the Installation wizard on user's computer.



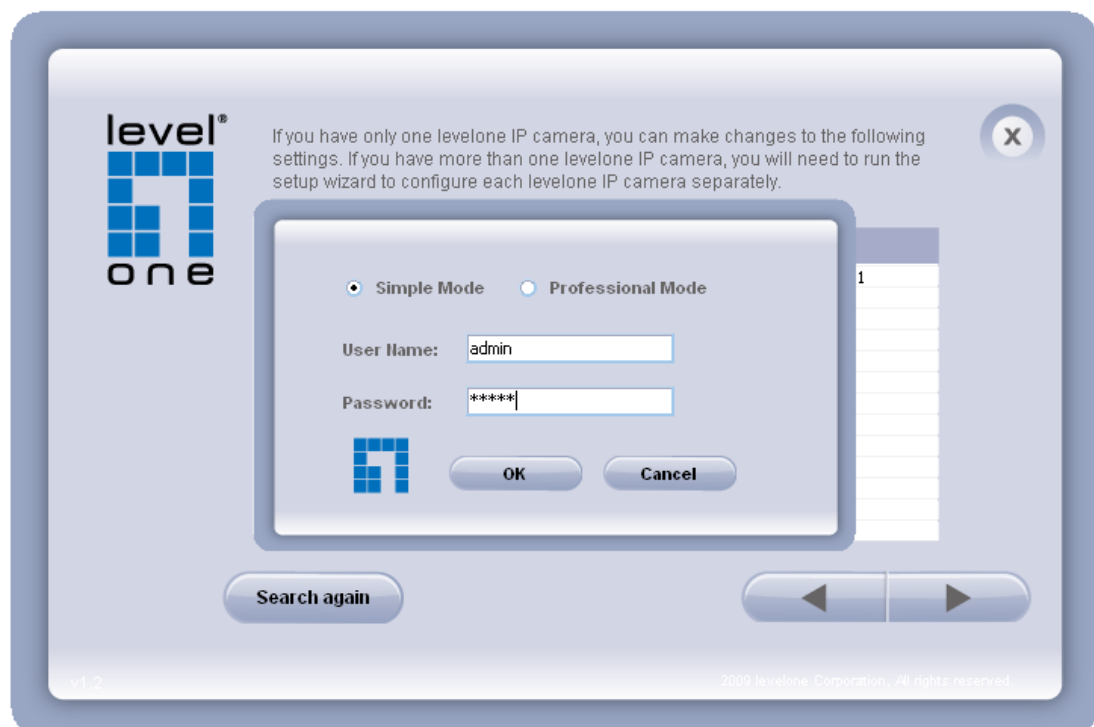
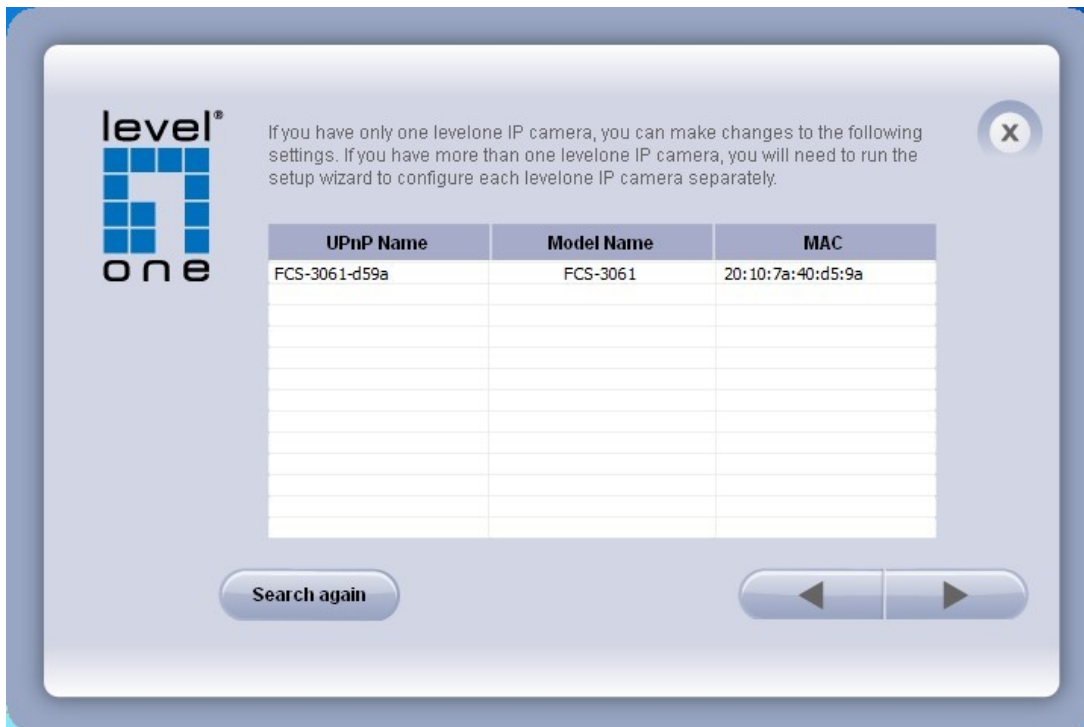




2. Do not check the box if user would like to check the hardware installation settings.
- Otherwise click “Skip the hardware installation” to skip the hardware connection checking, the program will automatically search for the Network Camera in the Intranet.
- Click “Start” to continue.

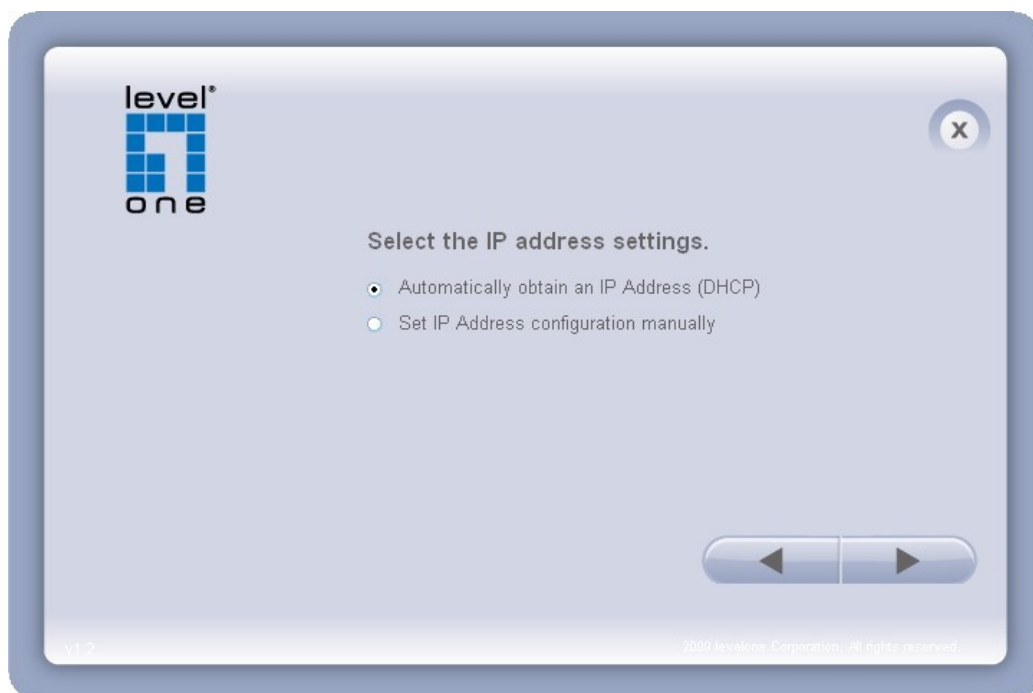


3. Select the Network Camera from the survey list and enter the user name and password. The user name and password are assigned as “**admin/admin**”.



4. Setting the Network Camera IP address.

User can either select simple mode or professional mode for network camera IP setting. If simple mode is selected, the easy configuration program will set up the connection automatically. If professional mode is selected, the user will need to configure the IP manually. The DHCP setting is recommended. If user wants to set IP address manually, please refer to the product user manual.



level[®]
one

Enter the Static IP Address to configure IP Camera.

IP Address: 192 . 168 . 50 . 144

Subnet Mask: 255 . 255 . 255 . 0

Gateway: 192 . 168 . 50 . 1

DNS1: 168 . 95 . 1 . 1

DNS2: 61 . 31 . 233 . 1

Navigation: [Left Arrow] [Right Arrow]

5. Please make sure the internet connection is ready then start to do the internet discovery, otherwise click “Skip” to finish the setting.

The default domain name is MAC address; you can also register with your own name on-line.

level[®]
one

Internet Discovery

You may use internet discovery setting to connect to the IPCam without to have IP bear in mind.

☒ Enable

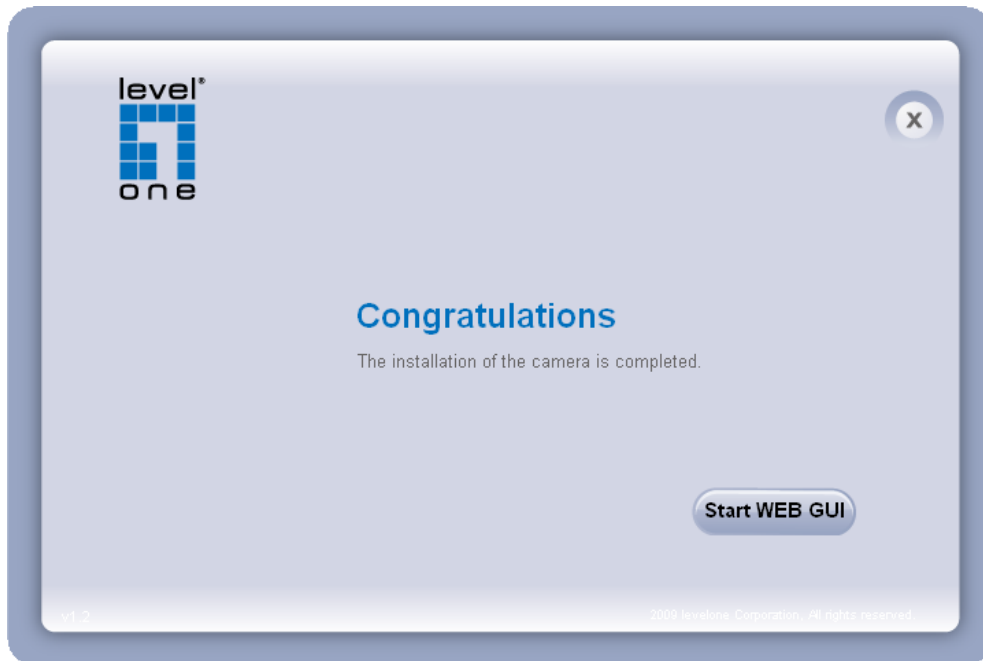
Domain Name: 0026821a0000 .level1dns2.net [Check]

Update Time: 1 hr [v]

Navigation: [Skip] [Left Arrow] [Right Arrow]

6. After finish setting, the connection successful or fail showed. If connection failed, user can either try again or quit the installation. User can either select “Run

PC-NVR" or "Start Web GUI" to continue or click "X" on the top right of the screen to finish the installation.



Once installation is completed, the Administrator should proceed to the next section "Access to the Network Camera" for necessary checks and configurations.

Access to the Network Camera

Check Network Settings

The Network Camera can be connected either before or immediately after software installation onto the Local Area Network. The Administrator should complete the network settings on the configuration page, including the correct subnet mask and IP address of gateway and DNS. Ask your network administrator or Internet service provider for the detail information.


Add Password to prevent Unauthorized Access

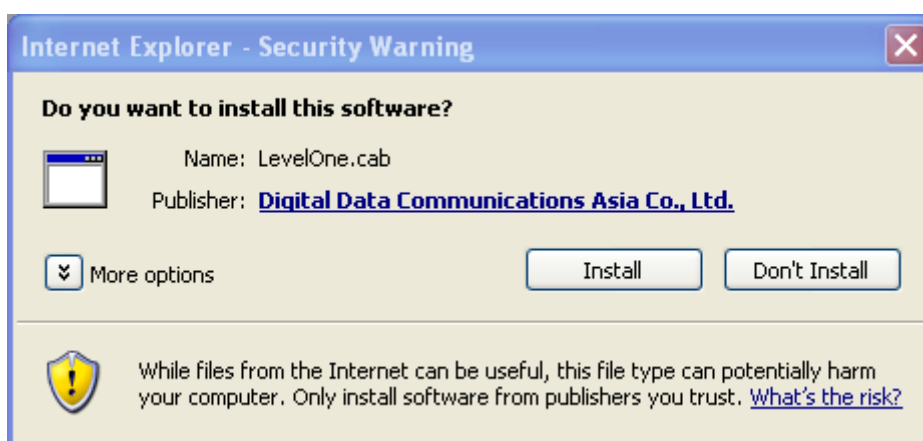
The Administrator should immediately implement a new password as a matter of prudent security practice. The user name and password for the Administrator are assigned as “**admin/admin**”. Once the Administrator’s password is saved, the Network Camera will ask for the user’s name and password before each access. The Administrator can set up a maximum of ten (10) user accounts. Each user can access the Network Camera except to perform system configuration. Once the password is changed, the browser will display an authentication window to ask for the new password. **Once the password is set, there is no provision to recover the Administrator’s password. The only option is to restore to the original factory default settings.**

Authentication

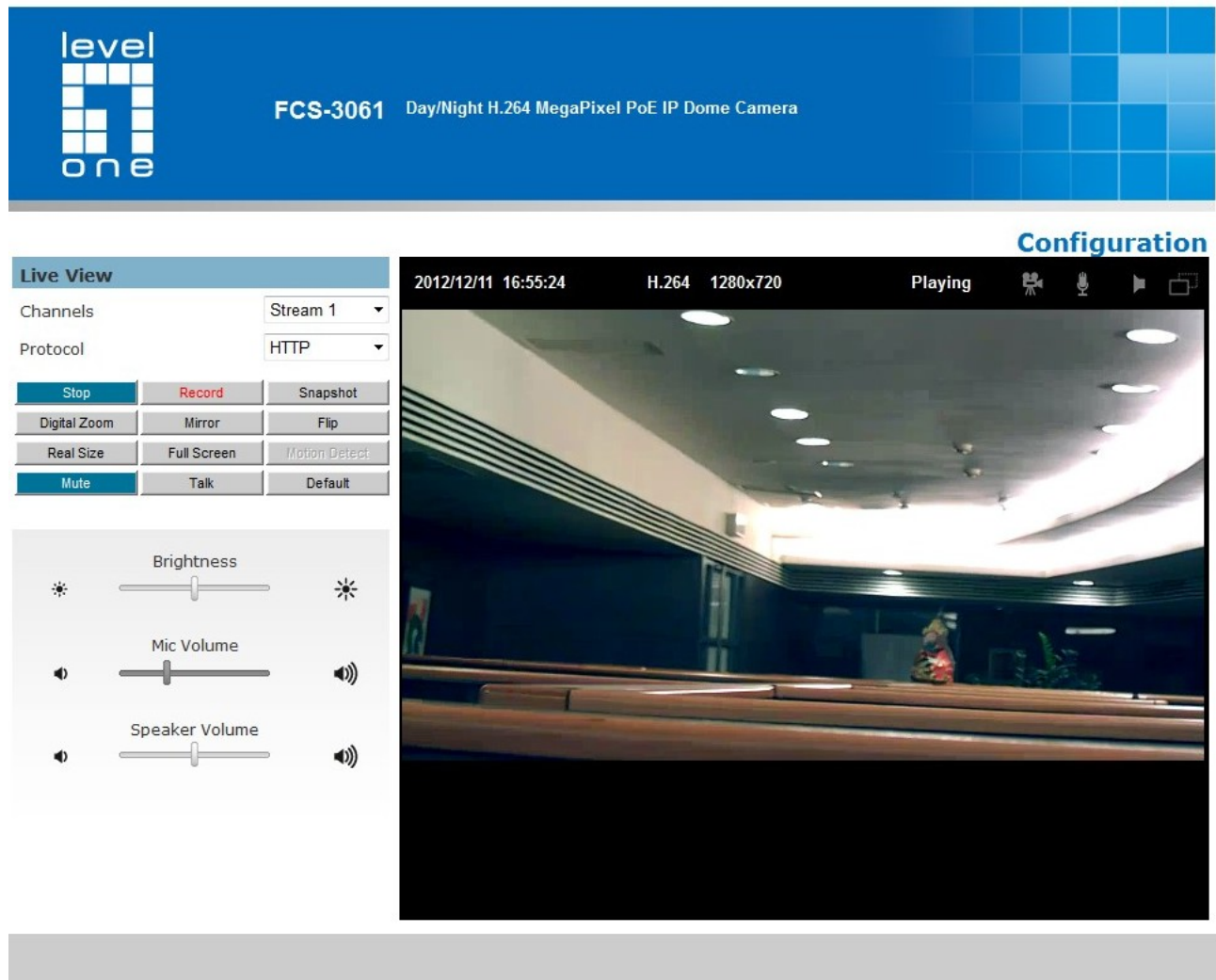
After opening the Web browser and typing in the URL of the Network Camera, a dialogue window pops up to request a username and password. The user name and password for the Administrator are assigned as “**admin/admin**”.

Installing plug-in

For the initial access to the Network Camera in Windows, the web browser may prompt for permission to install a new plug-in for the Network Camera on the Internet Explorer. Permission request depends on the Internet security settings of the user's PC or notebook. If the highest security level is set, the computer may prohibit any installation and execution attempt. This plug-in has been registered for certificate and is used to display the video in the browser. Users may click on  to proceed. If the web browser does not allow the user to continue to install, check the Internet security option and lower the security levels or contact your IT or networking supervisor for help.



Live View



Live View is the default page that opens when accessing the camera. Live video is displayed directly in the browser window.

- ***Stream1~2 Channels***

The network camera offers simultaneous several streams for optimized quality and bandwidth. Go to Configuration → Camera/Video/Audio → Video to configure the codec compression and video resolution or refer to the Video configuration page.

- ***HTTP/TCP/UDP protocol***

HTTP – This unicast method can be used to traverse firewalls. Firewalls are commonly configured to allow the HTTP protocol, thus allowing RTP to be tunneled.

TCP - This protocol guarantees the complete delivery of streaming data and provides

better video quality. The downside of using this protocol is that the quality of its real-time effect is less than that of the UDP protocol.

UDP - This protocol allows for more real-time audio and video streams. However, network packets may be lost due to network burst traffic and images may be broken. Activate UDP connection time-sensitive responses are more important than video quality.



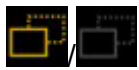
Recording on/off - Displays the status of recording video



MIC on /off - Displays the status of the MIC volume



Speaker on/off - Displays the status of the Speaker



MD on/off - Displays the status of Motion Detection

- **Brightness** - Drag the slider bar to adjust the image brightness level.
- **Mic volume** - Drag the slider bar to adjust the microphone volume.
- **Speaker volume** - The external speaker will play sound from an audio clip from the computer microphone when it is enabled.
- **Play or Stop** - Play or stop the video.
- **Record** - Record video to a computer.
- **Snapshot** - Capture and save still images.
- **Digital Zoom** - Enable the digital zoom operation.
- **Mirror** - Horizontally reflect the display of the live video.
- **Flip** - Vertically reflect the display of the live video.
- **Real Size** - View the object in real size. Press it again to switch back to normal mode.

- **Full Screen** - Switch to full screen mode. Press the “Esc” key to return to normal mode.
- **Motion Detection** - Enable the motion detection alert function.
- **Mute** - Turn off the sound.
- **Talk** - To communicate through the camera using the computer MIC.
- **Default** – Reset to default view settings.



NOTE

1. The <Camera Control Panel> functions have no effect on the recorded video.

Whatever changes are made to the <Camera Control Panel> **will not** be applied to the recorded video.

Configuration

Click <Configuration> on the main page to change the camera settings pages.



NOTE - Only Administrators can access the Configuration page.

Camera/Video/Audio

Camera

Camera Settings



☒ **Camera Settings** ☐ Profile Management

Profile : Day Profile ▾

Brightness	Contrast	Sharpness	Saturation
<div><div><div>Exposure Control</div><div><input checked="" type="radio"/> Auto <input type="radio"/> Manual</div></div><div><div>Flicker Free</div><div><input type="radio"/> 50Hz <input checked="" type="radio"/> 60Hz</div></div><div><div>Environment</div><div>Indoor ▾</div></div></div> <div><div>Auto Iris</div><div><input type="checkbox"/> Enable</div></div> <div><div>Mirror and Flip</div><div><input type="checkbox"/> Mirror <input type="checkbox"/> Flip</div></div> <div><div>IR Cut</div><div><input checked="" type="checkbox"/> IR Cut</div></div> <div><div>IR LED</div><div><input type="checkbox"/> Enable</div></div>			

Color Effect

☒ Color
☐ Black & White

White Balance

Auto ▾

Apply

Cancel

Profile - Select a profile from the drop-down menu to change profile settings.

Brightness - Drag the bar to adjust the image brightness level.

Contrast - Drag the bar to adjust the image contrast level.

Sharpness - Drag the bar to adjust the image sharpness level.

Saturation - Drag the bar to adjust the image saturation level.

Exposure Control

Auto: The camera will automatically control exposure.

Manual: Select this option to define the exposure manually

Flicker-Free - Eliminates the problem of flicker.

Environment - Select outdoor or indoor mode based on the conditions.

Auto Iris - Deactivate or activate Auto Iris.

Mirror and Flip

Mirror - Enable to horizontally reflect the display of the live video.

Flip - Enable to vertically reflect the display of the live video.

IR Cut - Deactivate or activate the IR cut filter

IR LED - Deactivate or activate the IR LED.

Color Effect - Select to display color or black and white video streams.

White Balance - White balance is a camera setting that adjusts for lighting in order to make Black & white.

Profile Management: Profiles can be scheduled to change at scheduled times or under different lightening changes.

☐ Camera Settings ☒ Profile Management

☒ Always ☐ Day&Night ☐ Schedule ☐ Digital Input

Always use: Day Profile ▾

Apply Cancel

Always - Select Always to use a single profile. Select the profile from the drop down menu.

☐ Camera Settings ☒ Profile Management

☐ Always ☒ Day&Night ☐ Schedule ☐ Digital Input

Day Profile Day Profile ▾

Night Profile Night Profile ▾

☐ Switch to Day profile if the detected value is higher than 40 (0~255) for 5 (1~300) Second

☒ Switch to Night profile if the detected value is lower than 10 (0~255) for 5 (1~300) Second



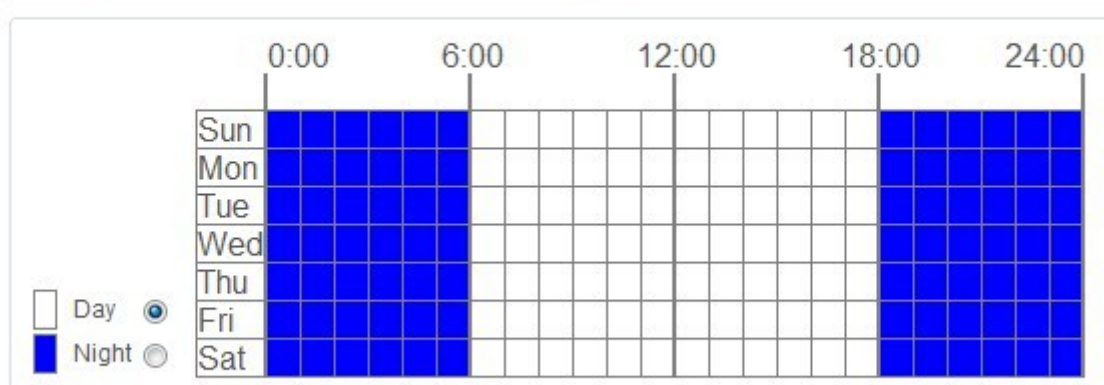
☐ Current detected value: 26

Apply Cancel

Day & Night - Select Day & Night to schedule two profiles for day and night. Select profiles from the drop down menu for the Day and Night Profiles.

☐ Camera Settings ☒ Profile Management

☐ Always ☐ Day&Night ☒ Schedule ☐ Digital Input



Schedule – Select Schedule to schedule specific time periods for different profiles.

☐ Camera Settings ☒ Profile Management

☐ Always ☐ Day&Night ☐ Schedule ☒ Digital Input

High profile: this profile will trigger the actions when the DI status is high.
 Low profile: this profile will trigger the actions when the DI status is low.
 Current status: High

Digital Input - Select Digital Input to have the profile management controlled by an external sensor. Select profiles from the drop down menu. Profiles will change according to different trigger voltage levels.

Click **Apply** to apply settings or **Cancel** to cancel changes.

Video

The Network Camera offers several separate streams for different viewing options.

Video

☒ **Stream** ☐ **Video Overlay** ☐ **RTSP Server**

Aspect Ratio

Mode ☐ 5:4 ☒ 16:9 ☐ 4:3

Stream

Stream 1: Video Codec

Video Resolution

Frame Rate

☐ Quality

☒ Bitrate Kbps. (64~12000)

Stream 2 : ☒

Video Codec

Video Resolution

Frame Rate

☒ Quality

☐ Bitrate Kbps. (64~12000)

Transport ☐ RTP

☐ RTP with Quantization Table Header

☒ HTTP Transport

Aspect Ratio - Select 5:4, 16:9 or 4:3 video aspect ratio.

Stream 1 ~ 2

Video Codec - The Network Camera offers three choices of video codec standards for real-time viewing: H.264, MPEG-4 and MJPEG.

Video Resolution - Select from the drop-down menu to choose the best resolution recording settings.

Frame Rate - Select the frame rate from drop-down menu. When selecting from Video Codec option, the frame rate ranges from 1 to 30 fps. Set a higher frame rate

for smoother video quality.

Bitrate Mode - Select the bitrate mode from the dropdown menu. Select Variable Bitrate to manually configure the bitrate. Select Constant Mode to have the bitrate set by the video codec. Set the bitrate higher for better quality.

Quality - Select MJPEG video codec to configure the video streaming using Quality. The video quality can be set between Level 1 to Level 6, with Level 6 producing the best image quality.

Transport-

RTP: The Real-time Transport Protocol (RTP) defines a standardized packet format for delivering audio and video over IP networks.

RTP with Quantization Table Header : Choose this option to explicitly include JPEG quantization table in the RTP stream [RFC 2435, section 3.1.8].

HTTP Transport : If MJPEG is used for Video Codec, HTTP Transport protocol must be enabled to remotely access the video stream.



NOTE - a higher bitrates will use higher network bandwidth. The video quality can be set between Level 1 to Level 6, with Level 6 producing the best image quality.



NOTE – HTTP Transport is for non-IE browser used only.

Click **Apply** to apply settings or **Cancel** to cancel changes.

Video Overlay

Video

☐ Stream ☒ Video Overlay ☐ RTSP Server

Video Overlay

Timestamp ☐ Left-Top ▼

Text ☐ Left-Top ▼

Apply

Cancel

Timestamp

To display the date and time on the screen during live view, check “Enable” to enable the timestamp function and select the format and display position from the drop-down menu.

Text

To make a note about the camera, check “Enable” and select the display position from the drop-down menu. Enter a video description in the text box.



NOTE - The video overlay will only take effect in stream 1.

Click **Apply** to apply settings or **Cancel** to cancel changes.

RTSP Server

Video

☐ Stream ☐ Video Overlay ☒ RTSP Server

RTSP Server

Port 554

Authentication NONE ▼

Apply

Cancel

To utilize RTSP authentication, the user must first set a password for the camera.

RTSP (Real-Time Streaming Protocol) controls the delivery of streaming media. By

default the port number is set to 554.

Authentication - Depending on the network security requirements, the camera provides two types of security settings for streaming via RTSP protocol: NONE and DIGEST.

If DIGEST authentication is selected, user credentials are encrypted using MD5 algorithm, thus providing better protection against unauthorized access.

Click **Apply** to apply settings or **Cancel** to cancel changes.

Audio

The administrator can set up several streams for the camera for different viewing devices. The administrator can enable or disable the audio function on either stream. If audio enable is selected, select the Audio codec from the drop-down menu.

Audio Configuration

Audio Configuration	
Stream 1	<input type="checkbox"/> Audio Codec G.711 ▾
Stream 2	<input type="checkbox"/> Audio Codec G.711 ▾
Advanced Settings	
Camera Speaker	<input checked="" type="checkbox"/> Volume 50% ▾
Echo Cancellation	<input type="checkbox"/>
<input type="button" value="Apply"/> <input type="button" value="Cancel"/>	

Advanced Settings

Camera Speaker – If the speaker is enabled, select the volume from the drop-down menu.

Echo Cancellation Enabled - Enable to avoid an echo.

Click **Apply** to apply settings or **Cancel** to cancel changes.

Network

IP Settings

This section explains how to configure a wired network connection for the camera. There are several ways to setup the camera over the Internet: (1) obtain an available dynamic IP address assigned by a DHCP server, (2) use a static IP, or use PPPoE (Point-to-point over Ethernet). Select the desire setup mode from the IP settings drop-down menu.

IP Settings

IP Settings	
Mode	DHCP ▼
Apply	Cancel

1. **DHCP** –If this option is selected, the camera will automatically obtain an available dynamic IP address from the DHCP server each time it connects to the LAN.

IP Settings


IP Settings	
Mode	Static IP ▼
IP Address	192 . 168 . 50 . 123
Subnet Mask	255 . 255 . 255 . 0
Default Gateway	192 . 168 . 50 . 1
Primary DNS	168 . 95 . 1 . 1
Secondary DNS	61 . 31 . 233 . 1
Apply	Cancel

2. **Static IP** - Select this option to manually assign a static IP address to the camera. Enter the static IP address, Subnet mask, Default Gateway, Primary and Secondary DNS provided by the ISP.

IP Settings

IP Settings

Mode	PPPoE ▼
Username	<input type="text"/>
Password	<input type="password"/>
<input type="button" value="Apply"/> <input type="button" value="Cancel"/>	

3. **PPPoE** (Point-to-point over Ethernet): Use this mode if connecting to the Internet through a DSL Line.  **NOTE** - To utilize this feature, it requires an account provided by an Internet Service Provider. Enter the user name and password provided by the ISP.

Click **Apply** to apply settings or **Cancel** to cancel changes.

UPnP

Universal Plug and Play (UPnP) simplifies the process of adding a camera to a local area network. Once connected to a LAN, the camera will automatically appear on the intranet. Click “Enable” to enable this function and enter an UPnP name which the camera will appear under on the intranet.

UPnP

UPnP

<input checked="" type="checkbox"/> UPnP Name	<input type="text" value="FCS-3061-d59a"/>
<input type="button" value="Apply"/> <input type="button" value="Cancel"/>	

Click **Apply** to apply settings or **Cancel** to cancel changes.

DDNS (dynamic domain name service)

DDNS links a domain name to an IP address, allowing users to easily access their camera even

with a changing IP address. Network cameras are compatible with three DDNS service providers (1) DynDNS and (2) TZO



NOTE - Before utilizing this function; please apply for a dynamic domain account from a DDNS provider.

DDNS

DynDNS

Enable ☐

Username

Password

Hostname

TZO

Enable ☐

Email Address

TZO Password

Domain Name

DynDNS – Enable the DynDNS to allow the camera to have a fixed host and domain name. Refer to the DynDNS website (www.dyndns.com) to apply for a dynamic domain account. When an account has been created, enter the username, password and hostname.

TZO is a DDNS provider which allows users to create a dynamic DNS. Refer to the TZO website (<http://www.tzo.com/>) to apply for a dynamic domain account. When an account has been created, enter the e-mail address, password and domain name.

Click **Apply** to apply settings or **Cancel** to cancel changes.

HTTP/HTTPS

HTTP/HTTPS

HTTP

Enable ☒

Port

HTTPS

Enable ☐

Port

HTTP – (Hypertext Transfer Protocol) - This protocol allows for TCP protocol quality without having to open specific ports for streaming. Users inside a firewall can utilize this protocol to allow streaming data through.

HTTPS - (Hypertext Transfer Protocol over SSL) - This protocol allows authentication and encrypted communication over SSL (Secure Socket Layer). It helps protect streaming data transmission over the Internet on a higher security level than HTTP.

Click “Enable” to enable and **Apply** to apply settings or **Cancel** to cancel changes.

Multicast

Multicast

Multicast

Stream 1

☐ Enable

Multicast Address . . .

Port

Stream 2

☐ Enable

Multicast Address . . .

Port

Multicast sends a video stream to the multicast group address and allows multiple clients to acquire the stream at the same time by requesting a copy from the multicast group address. Therefore, multicast can effectively save Internet bandwidth. The RTSP (Real-Time Streaming Protocol) controls the delivery of streaming media.

Click “Enable” to enable Multicast stream 1, Multicast stream 2 or Multicast stream 3. The default value for multicast address and port are 234.1.2.3 and 10000. Use different port number for different streams. It is recommended to use the default values.



NOTE - Using the IP address of the Network Camera enables access to the video.

Example: `rtsp://192.168.1.1/channel1`

Click **Apply** to apply settings or **Cancel** to cancel changes.

EasyLink

The IP Camera is bundled with free Level1DNS™ service which allows users to assign a unique user name to their network camera's IP address. There is no need to configure the router to open up ports or remember hard-to-memorize IP addresses. The default domain name is MAC address, you can also register your own name on-line but it have to check the available first.

1. Check the box to enable EasyLink function.
2. If Auto mode is selected, the following page will be displayed.



NOTE - This mode is recommended.

3. Enter a unique EasyLink name whose length must be between 5-32 characters. Verify that the EasyLink name is available.

Click **Apply** to apply settings or **Cancel** to cancel changes.

EasyLink

EasyLink	
Enable	<input checked="" type="checkbox"/>
Mode	<input checked="" type="radio"/> Auto <input type="radio"/> Manual
EasyLink Name	<input type="text" value="002233213131"/> .level1dns2.net <input type="button" value="Verify"/>
Self-Diagnostic	<input type="button" value="START"/>
<input type="button" value="Apply"/> <input type="button" value="Cancel"/>	



NOTE - The EasyLink function will not work if the following conditions occur:

1. The camera cannot be located behind a double NAT network.
2. The camera's IP address cannot be assigned to specific port numbers using the router's port forwarding.
3. EasyLink uses UPnP to exchange port information with the router. The camera must be connected to the internet through a router which supports UPnP.

Event

Event Settings

When an event (such as unauthorized movement) occurs, the camera can be scheduled to perform certain actions. An Event Type is a set of parameters that defines these actions. This section describes how to configure the camera to perform certain actions when events occur.

Event Settings

Event List			
Enable	Name	Event Type	Action
<div><div>Add</div><div>Delete</div></div>			

Click <Add Event> on the Event Settings page. The Event Setup page will appear.

Event Settings

Event List			
Enable	Name	Event Type	Action
<input type="button" value="Add"/>	<input type="button" value="Delete"/>		

Notification Settings	
Enable	<input type="checkbox"/>
Name	<input type="text"/>
Scheduled Event	<input checked="" type="radio"/> Always <input type="radio"/> Schedule <input type="radio"/> Recurrence Pattern
Event	Motion Detect ▼
Action	<input type="checkbox"/> Save Stream to FTP ▼
	<input type="checkbox"/> Send Snapshot to FTP ▼
	<input type="checkbox"/> Send HTTP Notification
	<input type="checkbox"/> Send to Email
	<input type="checkbox"/> Activate Digital Output
	<input type="checkbox"/> Send UDP Notification to IP address
	<input type="text"/> . <input type="text"/> . <input type="text"/> . <input type="text"/> Port <input type="text"/>
	<input type="checkbox"/> Send Multicast Notification to IP address
	<input type="text"/> . <input type="text"/> . <input type="text"/> . <input type="text"/> Port <input type="text"/>
<input type="button" value="Apply"/>	<input type="button" value="Cancel"/>

How to Set Up an Event Schedule

Event Schedule describes how and when the camera performs certain actions.

1. Check “Enable” and enter a descriptive name for the event schedule.
2. Set Event Schedule to define when the event is activated by selecting from Always (24 hours), Schedule or Recurrence pattern.
 - a. If Schedule is selected from the Event Schedule, the following page will be displayed:

Event Settings

Event List

Enable	Name	Event Type	Action
<input type="button" value="Add"/>	<input type="button" value="Delete"/>		

Notification Settings

Enable☐

Name

Scheduled Event ☐ Always ☒ Schedule ☐ Recurrence Pattern

	0:00	6:00	12:00	18:00	24:00
Sun	<input type="checkbox"/>	<input type="checkbox"/>	<input type="checkbox"/>	<input type="checkbox"/>	<input type="checkbox"/>
Mon	<input type="checkbox"/>	<input type="checkbox"/>	<input type="checkbox"/>	<input type="checkbox"/>	<input type="checkbox"/>
Tue	<input type="checkbox"/>	<input type="checkbox"/>	<input type="checkbox"/>	<input type="checkbox"/>	<input type="checkbox"/>
Wed	<input type="checkbox"/>	<input type="checkbox"/>	<input type="checkbox"/>	<input type="checkbox"/>	<input type="checkbox"/>
Thu	<input type="checkbox"/>	<input type="checkbox"/>	<input type="checkbox"/>	<input type="checkbox"/>	<input type="checkbox"/>
Fri	<input type="checkbox"/>	<input type="checkbox"/>	<input type="checkbox"/>	<input type="checkbox"/>	<input type="checkbox"/>
Sat	<input type="checkbox"/>	<input type="checkbox"/>	<input type="checkbox"/>	<input type="checkbox"/>	<input type="checkbox"/>

☒ Event Schedule
☐ Not Scheduled

Event

Action ☐ Save Stream to

☐ Send Snapshot to

☐ Send HTTP Notification

☐ Send to Email

☐ Activate Digital Output

☐ Send UDP Notification to IP address
 . . . Port

☐ Send Multicast Notification to IP address
 . . . Port

- i. A Scheduled Event can be programmed for certain times and day.
 - ii. Click individual boxes to schedule specific times for the camera to detect events.
- b. If Recurrence Pattern is selected, the following page will be displayed.

Event Settings

Event List			
Enable	Name	Event Type	Action
<input type="button" value="Add"/>	<input type="button" value="Delete"/>		

Notification Settings	
Enable	<input type="checkbox"/>
Name	<input type="text"/>
Scheduled Event	<input type="radio"/> Always <input type="radio"/> Schedule <input checked="" type="radio"/> Recurrence Pattern
Time	Start <input type="text" value="00"/> : <input type="text" value="00"/> ~ Duration <input type="text"/> Minutes
Date	<input type="checkbox"/> Sun <input type="checkbox"/> Mon <input type="checkbox"/> Tue <input type="checkbox"/> Wed <input type="checkbox"/> Thu <input type="checkbox"/> Fri <input type="checkbox"/> Sat
Event	<input type="text" value="Motion Detect"/>
Action	<input type="checkbox"/> Save Stream to <input type="text" value="FTP"/>
	<input type="checkbox"/> Send Snapshot to <input type="text" value="FTP"/>
	<input type="checkbox"/> Send HTTP Notification
	<input type="checkbox"/> Send to Email
	<input type="checkbox"/> Activate Digital Output
	<input type="checkbox"/> Send UDP Notification to IP address
	<input type="text"/> . <input type="text"/> . <input type="text"/> . <input type="text"/> Port <input type="text"/>
	<input type="checkbox"/> Send Multicast Notification to IP address
	<input type="text"/> . <input type="text"/> . <input type="text"/> . <input type="text"/> Port <input type="text"/>
<input type="button" value="Apply"/>	<input type="button" value="Cancel"/>

- i. An event schedule can be programmed to recur at different times according to the user's needs. Select the days for the event schedule to occur. Select a start time and specify the duration.
3. Define what will trigger an event to occur by selecting an option from the Event drop-down list.
4. Select the Actions that will occur when the event is triggered.
 - a. When <Send to Email> is selected, the following page will be shown:

Event Settings

Event List

Enable	Name	Event Type	Action
--------	------	------------	--------

<input type="button" value="Add"/>	<input type="button" value="Delete"/>
------------------------------------	---------------------------------------

Notification Settings

Enable ☐

Name

Scheduled Event ☒ Always ☐ Schedule ☐ Recurrence Pattern

Event

Action ☐ Save Stream to

☐ Send Snapshot to

☐ Send HTTP Notification

☒ Send to Email

☐ Activate Digital Output

☐ Send UDP Notification to IP address

. . . Port

☐ Send Multicast Notification to IP address

. . . Port

Email From

To

CC

My Name

Subject

- ii. Sender - Enter the email address of the sender.
- iii. Recipient - Enter the email address of the recipient. To enter multiple recipients, separate each using a comma.
- iv. Sender's Name – Enter the sender's name that will appear in the recipient's inbox.
- v. Subject - Enter the title of the email.

5. When complete, click **Apply** to save new event or **Cancel** to delete the event. The new event will appear on the event list.
6. To edit an event setting; select the event from the list. To remove an event setting from the list, select an event name from the list and then click <Delete Event>. Click <Add Event> to add more events.



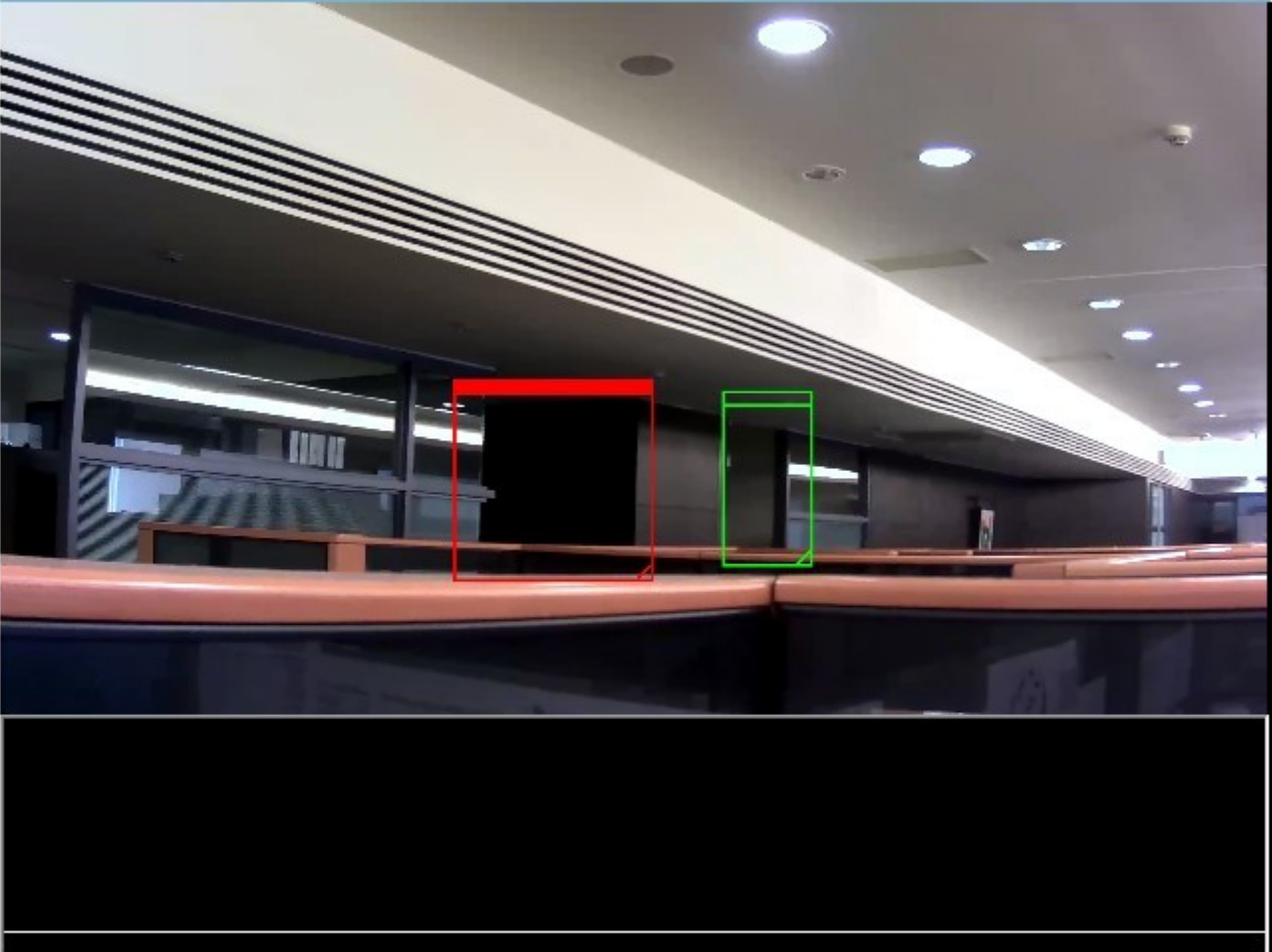
NOTE - Refer to the Audio Clip section for more details about the “Play Audio Clip” action.

Motion Detection

Motion can be detected by measuring changes in the speed or vector of an object or objects in the monitored area. This section explains how to configure the Network Camera to enable motion detection.

Motion Detection

Motion Detection



Sensitivity

Threshold

Window1

Window2

Window3

☒

☒

☐

Apply

Cancel

Detection Setting – Use this setting to enable and define the motion detection windows. The user can defined up to three areas on the live view window for motion detection.

1. Select <Window1>, <Window2>, or <Window3> to adjust the motion detection window.
2. Check the box to enable the window.
3. Use the mouse to resize or move the motion detection window.
4. Adjust the “Sensitivity” level. Lower sensitivity levels will result in more activity needed to trigger an event.

5. Adjust the “Threshold” to change the threshold level. The higher the threshold, the larger objects need to be to trigger an event.
6. The chart below the Live View window indicates the activity level of the Motion Detection window. When motion is detected by the camera and exceeds the defined threshold, a red bar will appear. Users can use this feature as a trigger source to send photos or videos to a remote server via email or FTP.

Click **Apply** to apply settings or **Cancel** to cancel changes.

Digital Input (DI)

Digital Input



Digital Input

Digital Input Low (Current status : High)

Apply Cancel

The DI socket allows the IP camera to receive input from an external device.

The external device should have the ability to drive voltage on the connected DI wire to the triggering voltage level in order to notify the IP camera of any event of interest. The IP camera will then process the event notification according to the specific event rules.

Triggering voltage Level: LOW, HIGH, Rising and Falling

Users should select the option according to the capability of their external device.

Notifications

Use the tools in this section to specify what type of notification will be sent when an event occurs. The camera can send buffered images to an FTP server, Samba, Email, or HTTP.

FTP Settings

File Transfer Protocol (FTP) is used as an application component to automatically transfer files for program internal functions. Select “Primary FTP Server” from the Server Selection drop down menu to send media files to a FTP server when an event is triggered. Enter the FTP IP address or hostname. By default, the FTP port server is set to 21. Enter the account name, password and FTP Path to configure the settings.

FTP Settings

FTP Settings	
Server Selection	Primary FTP Server ▼
FTP Address	IP Address ▼ 0 . 0 . 0 . 0
FTP Port	21
Account Name	
Account Password	
FTP Path	
<input type="button" value="Apply"/> <input type="button" value="Test"/> <input type="button" value="Cancel"/>	

Click **Apply** to apply settings or **Cancel** to cancel changes.

E-mail Settings

Select “Primary Email Server” option from the Server Selection drop down menu to send media files to an email server when an event is triggered.

SMTP Server - Enter the server host name of the email server.

SMTP Port - Enter the port number of the email server; by default, the SMTP port is set to 25.

Authentication - Select the authentication type from the drop-down menu.

Email Account - Enter the user name of the email account if necessary.

Email Password - Enter the password of the email account if necessary.

Email Settings

Email Settings	
Server Selection	Primary Email Server ▼
SMTP Server	<input type="text"/>
SMTP Port	25
Authentication	LOGIN ▼
Email Account	<input type="text"/>
Email Password	<input type="password"/>
<input type="button" value="Apply"/> <input type="button" value="Test"/> <input type="button" value="Cancel"/>	

Click **Apply** to apply settings or **Cancel** to cancel changes.

Samba Settings

Select this option to send the media files via a network neighborhood when an event is triggered.

Server Address - Enter the IP address of the Samba server.

User Name - Enter the user name of the Samba server.

Password - Enter the password of the Samba server.

Work Group - Enter the workgroup of the Samba server.

Shared Folder - Enter the share folder of the Samba server.

Samba Settings

Samba Settings	
Server Address	IP Address <input type="text"/> 0 <input type="text"/> . 0 <input type="text"/> . 0 <input type="text"/> . 0 <input type="text"/>
User Name	<input type="text" value="guest"/>
Password	<input type="password" value="•••••"/>
WorkGroup	<input type="text"/>
Shared Folder	<input type="text"/>
<input type="button" value="Apply"/> <input type="button" value="Test"/> <input type="button" value="Cancel"/>	

Click **Apply** to apply settings or **Cancel** to cancel changes.

HTTP Settings

Select this option to send the media files via an HTTP notification when an event is triggered.

HTTP Settings

HTTP Settings	
URL	<input type="text"/>
Message	<input type="text"/>
User Name	<input type="text"/>
Password	<input type="text"/>
<input type="button" value="Apply"/> <input type="button" value="Cancel"/>	

URL –Specify the URL to send HTTP requests. The URL is normally written as:

http://ip_address/notification.cgi?parameter

ip_address – type the IP address or host name of the HTTP host.

Parameter – type the notification parameter if necessary.

Example

URL - <http://192.168.1.1/xxxx.cgi>

Message - name1=value1&name2=vlaue2

Result - [http://192.168.1.1/xxxx.cgi? name1=value1&name2=vlaue2](http://192.168.1.1/xxxx.cgi?name1=value1&name2=vlaue2)

Ex:

<https://192.168.1.1/notification.cgi?event=MD&camera=FB-100A>

Message - Enter the message notification that will be sent when an event is triggered.

Enter the user name and password if necessary.

Click **Apply** to apply settings or **Cancel** to cancel changes.

Digital Output (DO)

Digital Output



Digital Output Grounded ▾ Duration 5 Sec (Current status : Open)

The DO socket allows the IP camera to send output to an external device. While executing the DO notification action, the IP camera drives voltage on the connected DO wire to the triggering voltage level for X number of seconds. The connected external device will then be triggered for X number of seconds.

Triggered Voltage Level - OPEN or GROUND

Users should select the option according to the specification of their external device.

Video Clip

Video Clip

Video Clip		
Pre-Alarm Buffer	<input type="text" value="5"/>	Seconds (0-10)
Post-Alarm Buffer	<input type="text" value="5"/>	Seconds (0-30)
Maximum Buffer Size	<input type="text" value="3072"/>	Kbytes (128-6144)
<input type="button" value="Apply"/> <input type="button" value="Cancel"/>		

This function is used to determine when video clips will be recorded and stored after an event is triggered.

Pre-alarm buffer - Images can be stored internally on the server from the time immediately preceding the trigger. Enter the desired length of time.

Post-alarm buffer - Images can be stored internally on the server from the time immediately following the trigger. Enter the desired length of time.

Maximum buffer size –Specify the maximum file size allowed.

Click **Apply** to apply settings or **Cancel** to cancel changes.

SD Card

Storage Management

Storage Management is used to view all the recorded files on the Micro-SD/SDHC card.

Storage Management

Local Storage Information	
Item	SD Card
Total Capacity	7.41GB
Used Space	224KB
Available Space	7.41GB
Memory Card Management	<button>Reload</button> <button>Remove</button> <button>Format</button>
Automatic Recycle <input checked="" type="checkbox"/>	
Offline Record <input type="checkbox"/>	
<button>Apply</button> <button>Cancel</button>	
<div><div>sd</div><div><div>offline</div><div>schedule</div><div>snapshot</div><div>videoclip</div></div></div>	

Click **Reload** to refresh the list of recorded files.

Click **Remove** to safely remove the Micro-SD/SDHC memory card.

Click **Format** to format the Micro-SD/SDHC memory card.

Left click on the folder to list the recorded files. The user can either play the snapshot of the recorded files by moving the mouse pointer over the file or double click on a file to play it.

Right click on the folder to download, play or delete the recorded files.



NOTE – The user may need to install QuickTime multimedia framework to play the video clips.

Maintenance

Language

Language

Language
English ▼
Apply Cancel


Select the desired language from the drop-down list.

Click **Apply** to apply settings or **Cancel** to cancel changes.































User Management

This section explains how to enable password protection and create multiple accounts.

The administrator account name is “admin”, which is permanent and cannot be deleted.

Click  to create an account.

User Management

Privilege Settings					
▼	User Name	Password	Confirm Password	Privilege	Configuration
1	admin	•••••	•••••	Administrator ▼	  
2	viewer	••••••	••••••	Viewer ▼	  
3	viewer	•••••••	•••••••	Remote Viewer ▼	  
4	<input type="text"/>	<input type="password"/>	<input type="password"/>	Viewer ▼	  
5	<input type="text"/>	<input type="password"/>	<input type="password"/>	Viewer ▼	  
6	<input type="text"/>	<input type="password"/>	<input type="password"/>	Viewer ▼	  
7	<input type="text"/>	<input type="password"/>	<input type="password"/>	Viewer ▼	  
8	<input type="text"/>	<input type="password"/>	<input type="password"/>	Viewer ▼	  
9	<input type="text"/>	<input type="password"/>	<input type="password"/>	Viewer ▼	  
10	<input type="text"/>	<input type="password"/>	<input type="password"/>	Viewer ▼	  

Enter the new user's name, password and confirm password. Administrators can add up to 10 user accounts.

Select the privilege level for the new user account from the drop-down list. Privilege levels can be assigned as:

- ◆ Administrator - user has access to view and change the Configuration page. Users with administrator privilege can change other user's access rights and delete user accounts.
Click **Delete** or **Update** to delete or modify a user's account.
- ◆ Viewer - user can only access the main page for live viewing.
- ◆ Remote Viewer - user can only access the main page for live viewing using TCP protocol.

IP Filter

The IP Filter is used to filter the IP addresses which are able to access the network camera. Enable the IP Filter and select to allow or deny a range of IP addresses access to the server. Click **Add to list** to add the IP range to the IP filter list.

IP Filter

IP Filter

☐ Enable IP Filter ☐ Allow Access List ☒ Deny Access List

From . . . To . . .

Click **Apply** to apply settings or **Cancel** to cancel changes.

Firmware Upgrade

This feature allows the user to upgrade the camera firmware. It will take a few minutes to complete the process.

 **NOTE** - Do not power off the camera or camera during the upgrade.

Upgrade - Click **Browse...** and specify the firmware file. Click **Upgrade**. The camera will begin upgrading and will reboot automatically when the upgrade is finished.

Firmware Upgrade

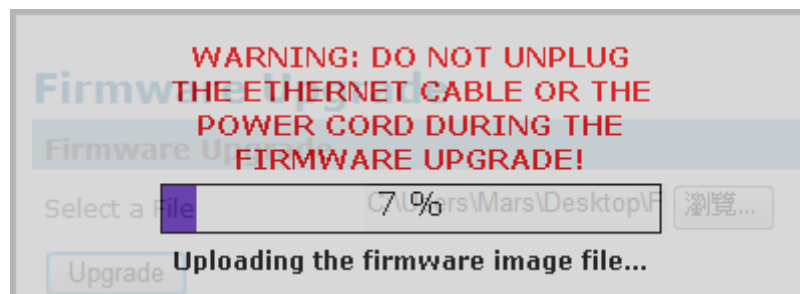
Firmware Upgrade

Select a File

瀏覽...

Upgrade

The following message will show during the firmware upgrading process.



Configuration

This feature allows the user to export/import the configuration files of the network camera.

Import/Export - Click **export** to pop up a dialog to indicate the location and file to export.

Click **browse** to indicate the location and file of the camera configuration and click **import** to import the configuration file back into the network camera.

Configuration

Import / Export

Export

Export

Import

Please select a file to import

Import

瀏覽...

Reset to Default

This section is used to restore the camera to default factory settings. Check the boxes to preserve the IP, Date and Time, or Language settings. Click **Apply** to restore the camera to default factory settings.

Reset to Default

Reset to Default

Press the Apply button to restore the network camera to factory default except settings in

☐ Language settings

☐ Date and Time settings

☐ IP settings

Apply

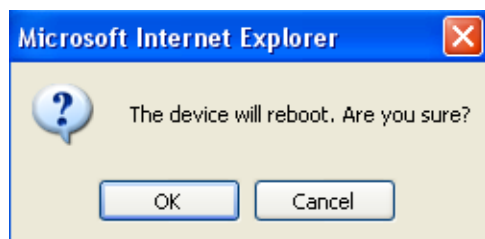
Reboot

Reboot

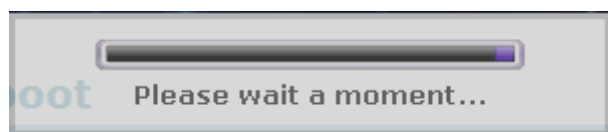
Reboot

Apply

This feature will reboot the camera. Click **Apply** to begin. A message will pop up asking “The device will reboot. Are you sure?” Click “OK” to continue. The camera will take about one minute to reboot.



The following message will show during the rebooting process.



When completed, the live video page will be displayed in the web browser.

System

System Log

Log – Set up the camera to record a system log when an event is triggered.

System Log

System Log

```
LOG_INFO-stream :Channel [1] stopped streaming to host '[192.168.50.97]', Tue Dec 11 17:30:58 2012
LOG_INFO-stream :Channel [1] started streaming to host '[192.168.50.97]', Tue Dec 11 17:30:47 2012
LOG_INFO-stream :Channel [1] stopped streaming to host '[192.168.50.97]', Tue Dec 11 17:30:45 2012
LOG_INFO-stream :Channel [1] started streaming to host '[192.168.50.97]', Tue Dec 11 17:30:44 2012
LOG_INFO-stream :Channel [1] stopped streaming to host '[192.168.50.97]', Tue Dec 11 17:17:49 2012
LOG_INFO-stream :Channel [1] started streaming to host '[192.168.50.97]', Tue Dec 11 17:02:21 2012
LOG_INFO-stream :Channel [1] stopped streaming to host '[192.168.50.97]', Tue Dec 11 17:02:19 2012
LOG_INFO-stream :Channel [1] started streaming to host '[192.168.50.97]', Tue Dec 11 17:02:19 2012
LOG_INFO-stream :Channel [1] stopped streaming to host '[192.168.50.97]', Tue Dec 11 17:02:10 2012
LOG_INFO-stream :Channel [1] started streaming to host '[192.168.50.97]', Tue Dec 11 16:56:54 2012
LOG_INFO-stream :Channel [1] stopped streaming to host '[192.168.50.97]', Tue Dec 11 16:56:51 2012
LOG_INFO-stream :Channel [1] started streaming to host '[192.168.50.97]', Tue Dec 11 16:56:51 2012
LOG_INFO-stream :Channel [1] stopped streaming to host '[192.168.50.97]', Tue Dec 11 16:56:49 2012
LOG_INFO-stream :Channel [1] started streaming to host '[192.168.50.97]', Tue Dec 11 16:56:48 2012
LOG_INFO-stream :Channel [1] stopped streaming to host '[192.168.50.97]', Tue Dec 11 16:56:45 2012
LOG_INFO-stream :Channel [1] started streaming to host '[192.168.50.97]', Tue Dec 11 16:56:45 2012
LOG_INFO-stream :Channel [1] stopped streaming to host '[192.168.50.97]', Tue Dec 11 16:56:43 2012
LOG_INFO-stream :Channel [1] started streaming to host '[192.168.50.97]', Tue Dec 11 16:54:25 2012
LOG_INFO-stream :Channel [1] stopped streaming to host '[192.168.50.97]', Tue Dec 11 16:54:23 2012
LOG_INFO-stream :Channel [1] started streaming to host '[192.168.50.97]', Tue Dec 11 16:54:23 2012
LOG_NOTICE-WebServer :User '[admin]' logged in to [web server], Tue Dec 11 16:54:19 2012
LOG_INFO-udhcpc :Communication established with DHCP server [192.168.50.1], Tue Dec 11 16:47:58 2012
LOG_INFO-udhcpc :DHCP lease renewal was successful, Tue Dec 11 16:47:58 2012
```

Retrieve

Save to File

This page displays the system's log in chronological order. The system log is stored in the camera's buffer area and will be overwritten when the buffer area is full.

Click **Retrieve** to retrieve the log or click **Save to file** to save the system log.

Date and Time

Time Zone – Select the local time zone from drop-down menu.

Manual – Manually enter the date and time.

Clone from PC – The camera will sync with the time, date and time zone of the computer used to modify the camera settings. Check “Clone” to utilize this option. The read-only date and time of the PC will be displayed.

NTP – (Network Time Protocol) - NTP is a protocol for synchronizing the clocks of a computer system. Select to update the time with a NTP server on an hourly, daily, weekly, or monthly basis.

NTP Server 1 and Server 2 - Enter the address of the NTP server

Daylight Saving - Enable this option to automatically update for Daylight Savings Time.

Date and Time

Time Synchronization	
Mode	<input checked="" type="radio"/> Set Manually <input type="radio"/> Synchronize with NTP server
Date	2009 / 1 / 3 (yyyy/mm/dd)
Time	16 : 38 : 7 (hh:mm:ss)
Clone from PC	<input type="checkbox"/> Clone (Current Time: 2012/12/12 13:25:5)
TimeZone	
TimeZone	(GMT+08:00)Taipei
Country	User Defined
Offset	Hours: +0 Minutes: 00
Daylight Saving Time	
Daylight Saving	<input checked="" type="radio"/> Disable <input type="radio"/> Enable Manual
Type	Date
Start Date	Month: 1 Day: 1
End Date	Month: 1 Day: 1
<input type="button" value="Apply"/> <input type="button" value="Cancel"/>	

Click **Apply** to apply settings or **Cancel** to cancel changes.

Save File Folder

Save File Folder

Recording Folder Path

Path

Snapshot Folder Path

Path

Type ▼

Recording folder path - The destination for saving the recording video files. Click Browse to specify the saving path.

Snapshot folder path - The destination for saving the snapshot files. Click Browse to specify the saving path and select the format from the drop-down menu.

Device Information

System Information – Displays the complete system information of the camera.

Device Information

System Information		
LAN MAC Address		20:10:7a:40:d5:9a
Firmware Version		v1.1.8.3
Firmware Release Date		12/06/2012 14:28
UPnP Name		FCS-3061-d59a
Network Settings		
IP Setting Type		DHCP
IP Address		192.168.50.126
Subnet Mask		255.255.255.0
Default Gateway		192.168.50.1
Primary DNS		168.95.1.1
Secondary DNS		61.31.233.1
UPnP		Enable
DynDNS		Disable
TZO		Disable
Video/Audio Settings		
Stream 1		
	Video Codec	H264
	Video Resolution	1280x720
	Video Frame Rate	20 fps
	Video Bitrate	2000 Kbps
	Audio Codec	N/A
	Multicast IP	N/A
Stream 2		
	Video Codec	MJPEG
	Video Resolution	1280x720
	Video Frame Rate	15 fps
	Video Quality	3
	Audio Codec	N/A
	Multicast IP	N/A

Network Settings –Displays the complete network settings information of the camera.

Video/Audio Settings –Displays the complete video/audio settings information of the camera.