



LevelOne

FBR-1430
VPN Broadband Router, 1W 4L

User Manual

V1.0.0-0702

Table of Contents

CHAPTER 1 INTRODUCTION	1
VPN BROADBAND ROUTER FEATURES	1
Internet Access Features	1
Advanced Internet Functions	1
LAN Features	2
Configuration & Management	2
Security Features.....	2
IPSec VPN Gateway Features.....	2
Microsoft VPN Gateway Support	2
PACKAGE CONTENTS	3
PHYSICAL DETAILS	4
Front-mounted LEDs	4
Rear Panel.....	5
CHAPTER 2 INSTALLATION.....	6
REQUIREMENTS.....	6
PROCEDURE	6
CHAPTER 3 SETUP.....	8
OVERVIEW	8
CONFIGURATION PROGRAM	9
Preparation	9
SETUP WIZARD	11
Common Connection Types.....	11
Home Screen	13
LAN SCREEN	14
DHCP.....	15
PASSWORD.....	15
CHAPTER 4 PC CONFIGURATION.....	17
OVERVIEW	17
WINDOWS CLIENTS	17
TCP/IP Settings - Overview	17
Checking TCP/IP Settings - Windows 9x/ME:	18
Checking TCP/IP Settings - Windows 2000:.....	20
Checking TCP/IP Settings - Windows XP	22
Internet Access	24
MACINTOSH CLIENTS	25
LINUX CLIENTS	25
OTHER UNIX SYSTEMS.....	25
CHAPTER 5 OPERATION AND STATUS.....	26
OPERATION	26
STATUS SCREEN	26
CONNECTION STATUS - PPPoE	27
CONNECTION STATUS - PPTP	30
CONNECTION STATUS - TELSTRA BIG POND	31
CONNECTION DETAILS - SINGTEL RAS	32
CONNECTION DETAILS - FIXED/DYNAMIC IP ADDRESS	34
CHAPTER 6 INTERNET FEATURES.....	36
OVERVIEW	36
WAN PORT CONFIGURATION	37
ADVANCED SETUP	39
Communication Applications	40
Special Applications.....	40
Multi-DMZ	41
URL Filter	42

<i>URL Filter Screen</i>	42
DYNAMIC DNS (DOMAIN NAME SERVER)	43
<i>Dynamic DNS Screen</i>	43
VIRTUAL SERVERS	45
<i>IP Address seen by Internet Users</i>	45
<i>Virtual Servers Screen</i>	45
<i>Defining your own Virtual Servers</i>	46
<i>Connecting to the Virtual Servers</i>	46
OPTIONS	47
CHAPTER 7 SECURITY CONFIGURATION	48
OVERVIEW	48
ACCESS CONTROL	49
<i>Access Control Screen</i>	49
<i>Group Members Screen</i>	51
<i>Access Control Log</i>	51
FIREWALL RULES	52
<i>Firewall Rules Screen</i>	52
<i>Define Firewall Rule</i>	54
LOGS	56
E-MAIL	58
SECURITY OPTIONS	60
SCHEDULING	62
<i>Define Schedule Screen</i>	62
SERVICES	63
CHAPTER 8 VPN (IPSEC)	64
OVERVIEW	64
<i>IPSec</i>	64
<i>IKE</i>	64
<i>Policies</i>	64
<i>VPN Configuration</i>	65
COMMON VPN SITUATIONS	65
<i>VPN Pass-through</i>	65
<i>Client PC to VPN Gateway</i>	66
<i>Connecting 2 LANs via VPN</i>	66
VPN CONFIGURATION	67
<i>VPN Policies Screen</i>	67
<i>Adding a New Policy</i>	68
VPN EXAMPLES	77
<i>Example 1: Connecting 2 VPN Broadband Routers</i>	77
<i>Example 2: Windows 2000/XP Client to LAN</i>	79
<i>Example 3: Windows 2000 Server to VPN Gateway</i>	92
CERTIFICATES	95
<i>Trusted Certificates</i>	95
<i>Requesting a Trusted Certificate</i>	95
<i>Self Certificates</i>	96
<i>Requesting a Self Certificate</i>	97
CRLs	99
STATUS	100
CHAPTER 9 MICROSOFT VPN	102
OVERVIEW	102
SERVER SETUP	102
CLIENT DATABASE	103
STATUS SCREEN	105
WINDOWS CLIENT SETUP	106
<i>Windows 98/ME</i>	106
<i>Windows 2000</i>	108
<i>Windows XP</i>	111
CHAPTER 10 OTHER FEATURES & SETTINGS	114

OVERVIEW	114
CONFIG FILE	115
NETWORK DIAGNOSTICS	116
PC DATABASE.....	117
<i>PC Database Screen</i>	117
<i>PC Database (Admin)</i>	119
REMOTE ADMINISTRATION	121
ROUTING	123
<i>Overview</i>	123
<i>Routing Screen</i>	123
<i>Configuring Other Routers on your LAN</i>	125
<i>Static Routing - Example</i>	126
UPGRADE FIRMWARE.....	128
UPNP	129
APPENDIX A TROUBLESHOOTING	130
OVERVIEW	130
GENERAL PROBLEMS	130
INTERNET ACCESS.....	130
APPENDIX B SPECIFICATIONS.....	132
VPN BROADBAND ROUTER	132
FCC STATEMENT	132
<i>FCC Radiation Exposure Statement</i>	132
CE MARKING WARNING	133

Chapter 1

Introduction

1

This Chapter provides an overview of the VPN Broadband Router's features and capabilities.

Congratulations on the purchase of your new VPN Broadband Router. The VPN Broadband Router is a multi-function device providing the following services:

- **Shared Broadband Internet Access** for all LAN users.
- **VPN Gateway** for IPSec, PPTP VPN connections to remote PCs or sites.
- **4-Port Switching Hub** for 10BaseT or 100BaseT connections.

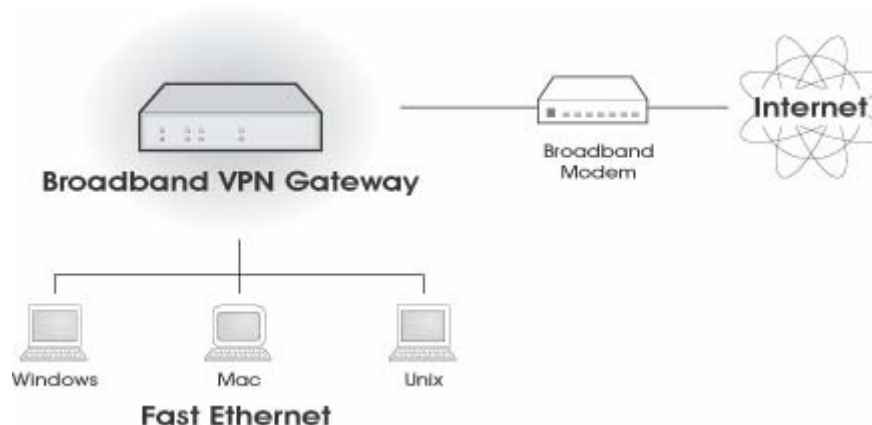


Figure 1: VPN Broadband Router

VPN Broadband Router Features

The VPN Broadband Router incorporates many advanced features, carefully designed to provide sophisticated functions while being easy to use.

Internet Access Features

- **Shared Internet Access.** All users on the LAN can access the Internet through the VPN Broadband Router, using only a single external IP Address. The local (invalid) IP Addresses are hidden from external sources. This process is called NAT (Network Address Translation).
- **DSL & Cable Modem Support.** The VPN Broadband Router has a 100BaseT Ethernet port for connecting a DSL or Cable Modem. All popular DSL and Cable Modems are supported. SingTel RAS and Big Pond (Australia) login support is also included.
- **PPPoE, PPTP, SingTel RAS and Telstra Big Pond Support.** The Internet (WAN port) connection supports PPPoE (PPP over Ethernet), PPTP (Peer-to-Peer Tunneling Protocol), SingTel RAS and Telstra Big Pond (Australia), as well as "Direct Connection" type services.
- **Fixed or Dynamic IP Address.** On the Internet (WAN port) connection, the VPN Broadband Router supports both Dynamic IP Address (IP Address is allocated on connection) and Fixed IP Address.

Advanced Internet Functions

- **Communication Applications.** Support for Internet communication applications, such as interactive Games, Telephony, and Conferencing applications, which are often difficult to use when behind a Firewall, is included.
- **Special Internet Applications.** Applications which use non-standard connections or port numbers are normally blocked by the Firewall. The ability to define and allow such applications is provided, to enable such applications to be used normally.
- **Virtual Servers.** This feature allows Internet users to access Internet servers on your LAN. The required setup is quick and easy.

- **Multi-DMZ.** For each WAN (Internet) IP address allocated to you, one (1) PC on your local LAN can be configured to allow unrestricted 2-way communication with Servers or individual users on the Internet. This provides the ability to run programs which are incompatible with Firewalls.
- **URL Filter.** Use the URL Filter to block access to undesirable Web sites by LAN users.
- **Internet Access Log.** See which Internet connections have been made.
- **VPN Pass through Support.** PCs with VPN (Virtual Private Networking) software using PPTP, L2TP and IPSec are transparently supported - no configuration is required.

LAN Features

- **4-Port Switching Hub.** The VPN Broadband Router incorporates a 4-port 10/100BaseT switching hub, making it easy to create or extend your LAN.
- **DHCP Server Support.** Dynamic Host Configuration Protocol provides a dynamic IP address to PCs and other devices upon request. The VPN Broadband Router can act as a **DHCP Server** for devices on your local LAN and WLAN.
- **Multi Segment LAN Support.** LANs containing one or more segments are supported; via the VPN Broadband Router's RIP (Routing Information Protocol) support and built-in static routing table.

Configuration & Management

- **Easy Setup.** Use your WEB browser from anywhere on the LAN or WLAN for configuration.
- **Remote Management.** The VPN Broadband Router can be managed from any PC on your LAN. And, if the Internet connection exists, it can also (optionally) be configured via the Internet.
- **UPnP Support.** UPnP (Universal Plug and Play) allows automatic discovery and configuration of the VPN Broadband Router. UPnP is supported by Windows ME, XP, or later.
- **Configuration File Backup & Restore.** You can backup (download) the VPN Broadband Router's configuration file to your PC, and restore (upload) a previously-saved configuration file to the VPN Broadband Router.

Security Features

- **Password - protected Configuration.** Optional password protection is provided to prevent unauthorized users from modifying the configuration data and settings.
- **NAT Protection.** An intrinsic side effect of NAT (Network Address Translation) technology is that by allowing all LAN users to share a single IP address, the location and even the existence of each PC is hidden. From the external viewpoint, there is no network, only a single device - the VPN Broadband Router.
- **Stateful Inspection Firewall.** All incoming data packets are monitored and all incoming server requests are filtered, thus protecting your network from malicious attacks from external sources.
- **Protection against DoS attacks.** DoS (Denial of Service) attacks can flood your Internet connection with invalid packets and connection requests, using so much bandwidth and so many resources that Internet access becomes unavailable. The VPN Broadband Router incorporates protection against DoS attacks.
- **Rule-based Policy Firewall.** To provide additional protection against malicious packets, you can define your own firewall rules. This can also be used to control the Internet services available to LAN users.

IPSec VPN Gateway Features

- **IPSec.** Support for IPSec standards, including IKE and certificates.
- **10 Tunnels.** Up to 10 VPN tunnels can be created.
- **High performance.** High performance encryption engine maintains high throughput even when using 3DES.

Microsoft VPN Gateway Support

- **PPTP Server.** The VPN Broadband Router emulates a Microsoft PPTP VPN Server, allowing clients to use the Microsoft VPN client provided in Windows.
- **Windows Client Support.** Remote users can use the Microsoft VPN client (VPN Adapter) provided in recent versions of Windows.
- **Easy Setup.** For both the Administrator and remote users, the Microsoft VPN is much easier to configure than IPSec VPN.

Package Contents

The following items should be included:

- FBR-1430
- Power Adapter
- Quick Installation Guide
- CD Manual

If any of the above items are damaged or missing, please contact your dealer immediately.

Physical Details

Front-mounted LEDs



Figure 2: Front Panel

Power	<p>On - Power on.</p> <p>Off - No power.</p>
Status (Red)	<p>On - Error condition.</p> <p>Off - Normal operation.</p> <p>Blinking - This LED blinks during start up.</p>
LAN	<p>Each port has 2 LEDs</p> <ul style="list-style-type: none"> • Link/Act <ul style="list-style-type: none"> • On - Corresponding LAN (hub) port is active. • Off - No active connection on the corresponding LAN (hub) port. • Flashing - Data is being transmitted or received via the corresponding LAN (hub) port. • 100 <ul style="list-style-type: none"> • On - Corresponding LAN (hub) port is using 100BaseT. • Off - Corresponding LAN (hub) port connection is using 10BaseT, or no active connection.
WAN	<p>On - Connection to the modem attached to the WAN (Internet) port is established.</p> <p>Off - No connection to a modem on the WAN (Internet) port.</p> <p>Flashing - Data is being transmitted or received via the WAN port.</p>

Rear Panel

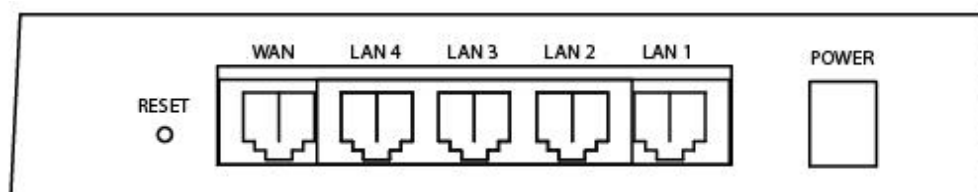


Figure 3: Rear Panel

Reset Button

This button has two (2) functions:

- **Reboot.** When pressed and released, the VPN Broadband Router will reboot (restart).
- **Clear All Data.** This button can also be used to clear ALL data and restore ALL settings to the factory default values.

To Clear All Data and restore the factory default values:

1. Power Off.
2. Hold the Reset Button down while you Power On.
3. Keep holding the Reset Button for a few seconds, until the RED LED has flashed TWICE.
4. Release the Reset Button. The VPN Broadband Router is now using the factory default values.

WAN port (10/100BaseT)

Connect the DSL or Cable Modem here. If your modem came with a cable, use the supplied cable. Otherwise, use a standard LAN cable.

10/100BaseT LAN connections

Use standard LAN cables (RJ45 connectors) to connect your PCs to these ports.

Note:

Any LAN port on the VPN Broadband Router will automatically function as an "Uplink" port when required. Just connect any port to a normal port on the other hub, using a standard LAN cable.

Power port

Connect the supplied power adapter here.

Chapter 2

Installation

2

This Chapter covers the physical installation of the VPN Broadband Router.

Requirements

- Network cables. Use standard 10/100BaseT network (UTP) cables with RJ45 connectors.
- TCP/IP protocol must be installed on all PCs.
- For Internet Access, an Internet Access account with an ISP, and a Broadband modem (usually, DSL or Cable modem).

Procedure

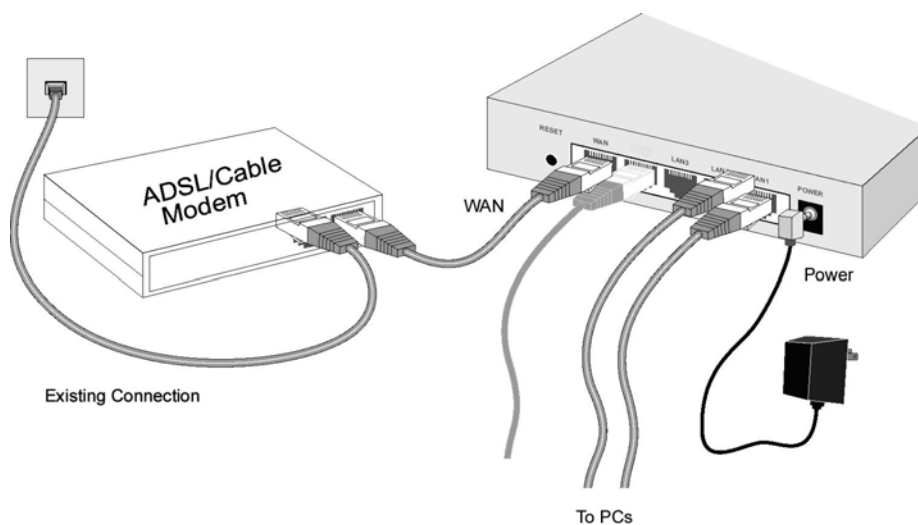


Figure 4: Installation Diagram

1. Choose an Installation Site

Select a suitable place on the network to install the VPN Broadband Router.
Ensure the VPN Broadband Router and the DSL/Cable modem are powered OFF.

2. Connect LAN Cables

- Use standard LAN cables to connect PCs to the Switching Hub ports on the VPN Broadband Router. Both 10BaseT and 100BaseT connections can be used simultaneously.
- If required, you can connect any LAN port to another Hub. Any LAN port on the VPN Broadband Router will automatically function as an "Uplink" port when required. Just connect any LAN port to a normal port on the other hub, using a standard LAN cable.

3. Connect WAN Cable

Connect the Broadband modem to the WAN port on the VPN Broadband Router. Use the cable supplied with your Broadband modem. If no cable was supplied, use a standard LAN cable.

4. Power Up

- Power on the Broadband modem.
- Connect the supplied power adapter to the VPN Broadband Router and power up.
Use only the power adapter provided. Using a different one may cause hardware damage

5. Check the LEDs

- The *Power* LED should be ON.
- The *Status* LED should blink during start up, then turn Off. If it stays on, there is a hardware error.
- For each LAN (PC) connection, the LAN *Link/Act* LED should be ON (provided the PC is also ON.)
- The *WAN* LED should be ON.

For more information, refer to Front-mounted LEDs in Chapter 1.

Chapter 3

Setup

3

This Chapter provides Setup details of the VPN Broadband Router.

Overview

This chapter describes the setup procedure for:

- Internet Access
- LAN configuration

PCs on your local LAN may also require configuration. For details, see *Chapter 4 - PC Configuration*.

Other configuration may also be required, depending on which features and functions of the VPN Broadband Router you wish to use. Use the table below to locate detailed instructions for the required functions.

To Do this:	Refer to:
Configure PCs on your LAN.	Chapter 4: PC Configuration
Check VPN Broadband Router operation and Status.	Chapter 5: Operation and Status
Use any of the following Internet features: <ul style="list-style-type: none"> • WAN Port • Advanced Setup • Dynamic DNS • Virtual Servers • Options 	Chapter 6: Internet Features
Change any of the following Security-related settings: <ul style="list-style-type: none"> • Admin Login • Access Control • Firewall Rules • Logs • E-mail • Security Options • Scheduling • Services 	Chapter 7: Security Configuration
Use the IPSec VPN features: <ul style="list-style-type: none"> • VPN Policies • Certificates • CRLs • VPN Status 	Chapter 8: VPN (IPSec)
Use the Microsoft VPN feature: <ul style="list-style-type: none"> • PPTP Server in the VPN Broadband Router. • User and Client setup. • Checking VPN connection Status. 	Chapter 9: Microsoft VPN

Configure or use any of the following: <ul style="list-style-type: none"> • Configuration File backup and restore. • Network Diagnostic • PC Database • Remote Administration • Routing • Upgrade Firmware • UPnP 	Chapter 9: Other Features and Set- tings
--	--



Where use of a certain feature requires that PCs or other LAN devices be configured, this is also explained in the relevant chapter.

Configuration Program

The VPN Broadband Router contains an HTTP server. This enables you to connect to it, and configure it, using your Web Browser. **Your Browser must support JavaScript.** The configuration program has been tested on the following browsers:

- Netscape V4.08 or later
- Internet Explorer V4 or later

Preparation

Before attempting to configure the VPN Broadband Router, please ensure that:

- Your PC can establish a physical connection to the VPN Broadband Router. The PC and the VPN Broadband Router must be directly connected (using the Hub ports on the VPN Broadband Router) or on the same LAN segment.
- The VPN Broadband Router must be installed and powered ON.
- If the VPN Broadband Router's default IP Address (192.168.0.1) is already used by another device, the other device must be turned OFF until the VPN Broadband Router is allocated a new IP Address during configuration.

Using UPnP

If your Windows system supports UPnP, an icon for the VPN Broadband Router will appear in the system tray, notifying you that a new network device has been found, and offering to create a new desktop shortcut to the newly-discovered device.

- Unless you intend to change the IP Address of the VPN Broadband Router, you can accept the desktop shortcut.
- Whether you accept the desktop shortcut or not, you can always find UPnP devices in *My Network Places* (previously called *Network Neighborhood*).
- Double - click the icon for the VPN Broadband Router (either on the Desktop, or in *My Network Places*) to start the configuration. Refer to the following section *Setup Wizard* for details of the initial configuration process.

Using your Web Browser

To establish a connection from your PC to the VPN Broadband Router:

1. After installing the VPN Broadband Router in your LAN, start your PC. If your PC is already running, restart it.
2. Start your WEB browser.
3. In the *Address* box, enter "HTTP://" and the IP Address of the VPN Broadband Router, as in this example, which uses the VPN Broadband Router 's default IP Address:

HTTP://192.168.0.1

If you can't connect

If the VPN Broadband Router does not respond, check the following:

- The VPN Broadband Router is properly installed, LAN connection is OK, and it is powered ON. You can test the connection by using the "Ping" command:
 - Open the MS-DOS window or command prompt window.
 - Enter the command:
ping 192.168.0.1
If no response is received, either the connection is not working, or your PC's IP address is not compatible with the VPN Broadband Router's IP Address. (See next item.)
- If your PC is using a fixed IP Address, its IP Address must be within the range 192.168.0.2 to 192.168.0.254 to be compatible with the VPN Broadband Router's default IP Address of 192.168.0.1. Also, the *Network Mask* must be set to 255.255.255.0. See *Chapter 4 - PC Configuration* for details on checking your PC's TCP/IP settings.
- Ensure that your PC and the VPN Broadband Router are on the same network segment. (If you don't have a router, this must be the case.)

4. You will be prompted for a username and password, as shown below.



Figure 5: Password Dialog

- Enter **admin** for the *User Name*, and **password** for Password
- These are the default values. Both the name and password can (and should) be changed, using the **Admin Login** screen. Once you have changed either the name or the password, you must use the current values.

Setup Wizard

The first time you connect to the VPN Broadband Router, you should click the WAN Wizard to begin initial setup.

1. Step through the Wizard until finished.
 - You need to know the type of Internet connection service used by your ISP. Check the data supplied by your ISP.
 - The common connection types are explained in the tables below.
2. On the final screen of the Wizard, run the test and check that an Internet connection can be established.
3. If the connection test fails:
 - Check your data, the Cable/DSL modem, and all connections.
 - Check that you have entered all data correctly.
 - If using a Cable modem, your ISP may have recorded the MAC (physical) address of your PC. Run the Wizard, and on the *Cable Modem* screen, use the "Clone MAC address" button to copy the MAC address from your PC to the VPN Broadband Router.

Common Connection Types

Cable Modems

Type	Details	ISP Data required
Dynamic IP Address	Your IP Address is allocated automatically, when you connect to you ISP.	Usually, none. However, some ISP's may require you to use a particular Hostname, Domain name, or MAC (physical) address.
Static (Fixed) IP Address	Your ISP allocates a permanent IP Address to you.	IP Address allocated to you, mask and gateway (if provided), and DNS address. Some ISP's may also require you to use a particular Hostname, Domain name, or MAC (physical) address.

DSL Modems

Type	Details	ISP Data required
Dynamic IP Address	Your IP Address is allocated automatically, when you connect to you ISP.	None.
Static (Fixed) IP Address	Your ISP allocates a permanent IP Address to you.	IP Address allocated to you, mask and gateway (if provided), and DNS address.
PPPoE	You connect to the ISP only when required. The IP address is usually allocated automatically.	User name and password.
PPTP	Mainly used in Europe. You connect to the ISP only when required. The IP address is usually allocated automatically, but may be Static (Fixed).	<ul style="list-style-type: none"> • PPTP Server IP Address. • User name and password. • IP Address allocated to you, if Static (Fixed).

Other Modems (e.g. Broadband Wireless)

Type	Details	ISP Data required
Dynamic IP Address	Your IP Address is allocated automatically, when you connect to you ISP.	Usually, none. However, some ISP's may require you to use a particular Hostname, Domain name, or MAC (physical) address.
Static (Fixed) IP Address	Your ISP allocates a permanent IP Address to you.	IP Address allocated to you, mask and gateway (if provided), and DNS address.

Big Pond Cable (Australia)

For this connection method, the following data is required:

- User Name
- Password
- Big Pond Server IP address

SingTel RAS

For this connection method, the following data is required:

- User Name
- Password
- RAS Plan

Home Screen

After finishing or exiting the WAN Wizard setup, you will see the *Home* screen. When you connect in future, you will see this screen when you connect. An example screen is shown below.

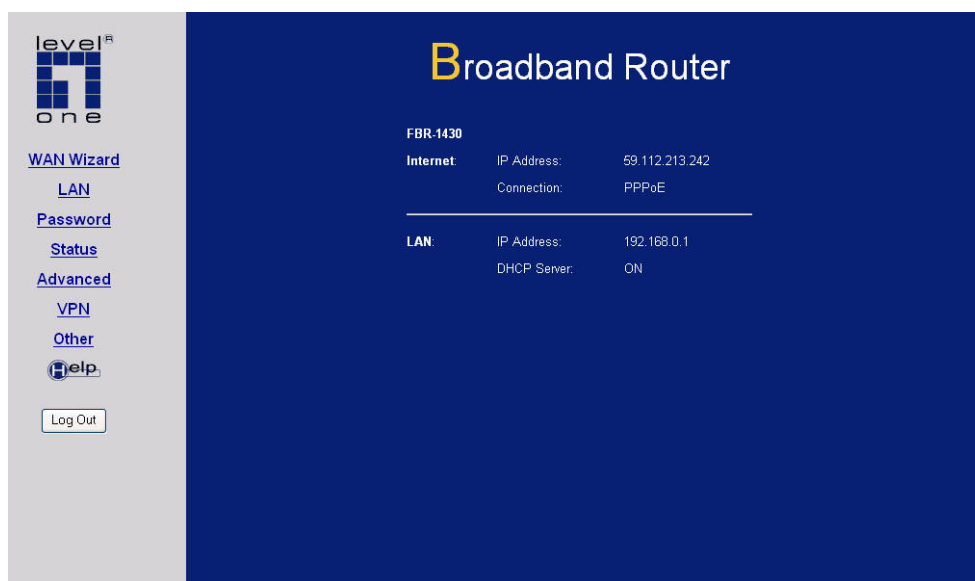


Figure 6: Home Screen

Navigation & Data Input

- Use the menu bar on the top of the screen, and the "Back" button on your Browser, for navigation.
- Changing to another screen without clicking "Save" does NOT save any changes you may have made. You must "Save" before changing screens or your data will be ignored.



Notel

On each screen, clicking the "Help" button will display help for that screen.

From any help screen, you can access the list of all help files (help index).

LAN Screen

Use the *LAN* link on the main menu to reach the **LAN** screen an example screen is shown below.

Figure 7: LAN Screen

Data - LAN Screen

TCP/IP	
IP Address	IP address for the VPN Broadband Router, as seen from the local LAN. Use the default value unless the address is already in use or your LAN is using a different IP address range. In the latter case, enter an unused IP Address from within the range used by your LAN.
Subnet Mask	The default value 255.255.255.0 is standard for small (class "C") networks. For other networks, use the Subnet Mask for the LAN segment to which the VPN Broadband Router is attached (the same value as the PCs on that LAN segment).
DHCP Server	<ul style="list-style-type: none"> If Enabled, the VPN Broadband Router will allocate IP Addresses to PCs (DHCP clients) on your LAN when they start up. The default (and recommended) value is Enabled. If you are already using a DHCP Server, this setting must be Disabled, and the existing DHCP server must be re-configured to treat the VPN Broadband Router as the default Gateway. See the following section for further details. The Start IP Address and Finish IP Address fields set the values used by the DHCP server when allocating IP Addresses to DHCP clients. This range also determines the number of DHCP clients supported. <p>See the following section for further details on using DHCP.</p>
Buttons	
Save	Save the data on screen.
Cancel	The "Cancel" button will discard any data you have entered and reload the file from the VPN Broadband Router.

DHCP

What DHCP Does

A DHCP (Dynamic Host Configuration Protocol) **Server** allocates a valid IP address to a DHCP **Client** (PC or device) upon request.

- The client request is made when the client device starts up (boots).
- The DHCP Server provides the *Gateway* and *DNS* addresses to the client, as well as allocating an IP Address.
- The VPN Broadband Router can act as a **DHCP server**.
- Windows 98SE/ME and other non-Server versions of Windows will act as a DHCP **client**. This is the default Windows setting for the TCP/IP network protocol. However, Windows uses the term *Obtain an IP Address automatically* instead of "DHCP Client".
- You must NOT have two (2) or more DHCP Servers on the same LAN segment. (If your LAN does not have other Routers, this means there must only be one (1) DHCP Server on your LAN.)

Using the VPN Broadband Router's DHCP Server

This is the default setting. The DHCP Server settings are on the **LAN** screen. On this screen, you can:

- Enable or Disable the VPN Broadband Router's *DHCP Server* function.
- Set the range of IP Addresses allocated to PCs by the DHCP Server function.



You can assign Fixed IP Addresses to some devices while using DHCP, provided that the Fixed IP Addresses are NOT within the range used by the DHCP Server.

Using another DHCP Server

You can only use one (1) DHCP Server per LAN segment. If you wish to use another DHCP Server, rather than the VPN Broadband Router's, the following procedure is required.

1. Disable the DHCP Server feature in the VPN Broadband Router. This setting is on the LAN screen.
2. Configure the DHCP Server to provide the VPN Broadband Router's IP Address as the *Default Gateway*.

To Configure your PCs to use DHCP

This is the default setting for TCP/IP under Windows 98SE/ME.

See *Chapter 4 - Client Configuration* for the procedure to check these settings.

Password

From the menu, select *Password*. This screen allows you to assign a user name and password to the VPN Broadband Router.

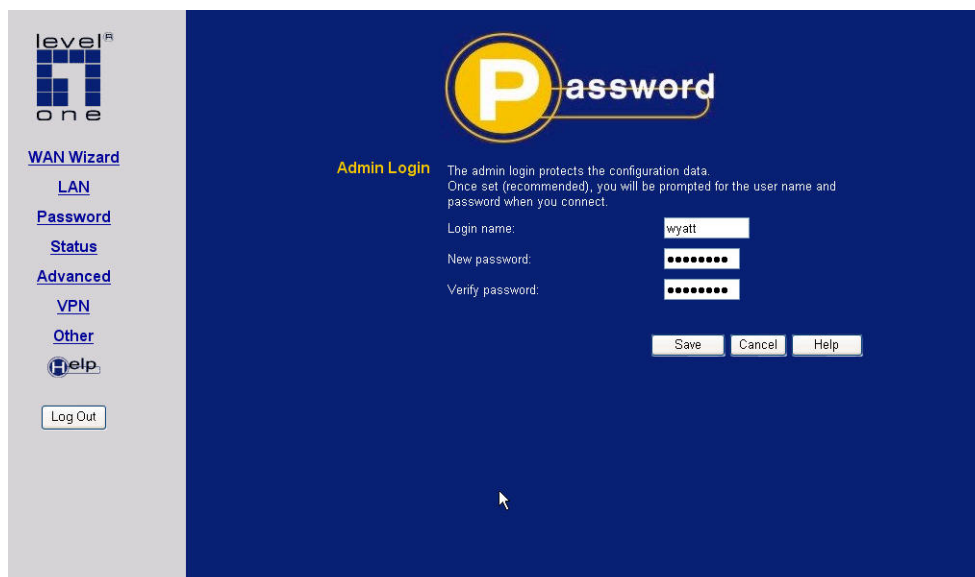


Figure 8: Password Screen

1. The default login name is "admin". Change this to the desired value.
2. The default password is "password". Enter the desired password in the *New Password* and *Verify Password* fields.
3. Save your changes.

You will see a login prompt when you connect to the VPN Broadband Router, as shown below.

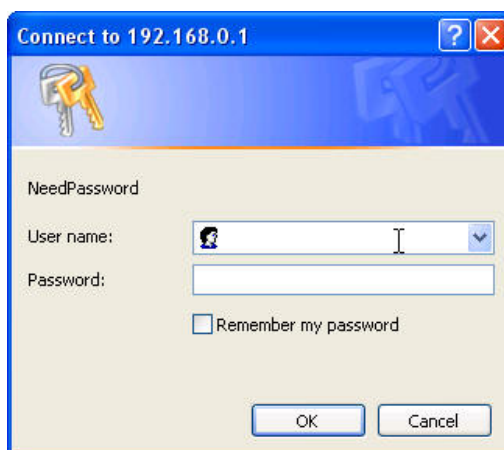


Figure 9: Password Dialog

Enter the "User Name" and "Password" you set on the *Admin Login* screen above.

Chapter 4

PC Configuration

4

This Chapter details the PC Configuration required on the local ("Internal") LAN.

Overview

For each PC, the following may need to be configured:

- TCP/IP network settings
- Internet Access configuration

Windows Clients

This section describes how to configure Windows clients for Internet access via the VPN Broadband Router.

The first step is to check the PC's TCP/IP settings.

The VPN Broadband Router uses the TCP/IP network protocol for all functions, so it is essential that the TCP/IP protocol be installed and configured on each PC.

TCP/IP Settings - Overview

If using the default VPN Broadband Router settings and the default Windows TCP/IP settings, no changes need to be made.

- By default, the VPN Broadband Router will act as a DHCP Server, automatically providing a suitable IP Address (and related information) to each PC when the PC boots.
- For all non-Server versions of Windows, the default TCP/IP setting is to act as a DHCP client.

If using a Fixed (specified) IP address, the following changes are required:

- The *Gateway* must be set to the IP address of the VPN Broadband Router
- The *DNS* should be set to the address provided by your ISP.



If your LAN has a Router, the LAN Administrator must re-configure the Router itself. Refer to *Chapter 8 - Other Features and Operations* for details.

Checking TCP/IP Settings - Windows 9x/ME:

1. Select *Control Panel - Network*. You should see a screen like the following:

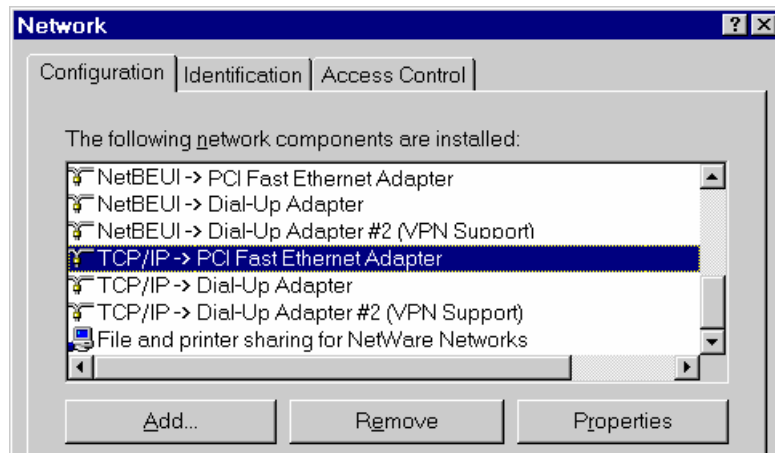


Figure 10: Network Configuration

2. Select the *TCP/IP* protocol for your network card.
3. Click on the *Properties* button. You should then see a screen like the following.

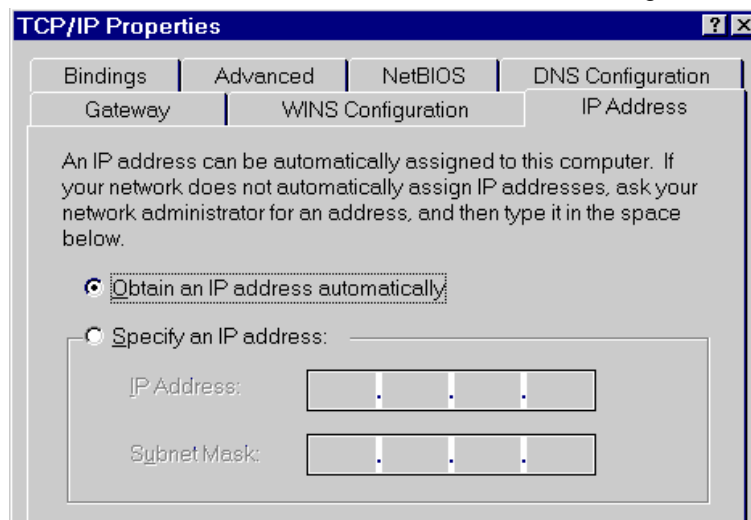


Figure 11: IP Address (Win 95)

Ensure your TCP/IP settings are correct, as follows:

Using DHCP

To use DHCP, select the radio button *Obtain an IP Address automatically*. This is the default Windows setting. **Using this is recommended.** By default, the VPN Broadband Router will act as a DHCP Server.

Restart your PC to ensure it obtains an IP Address from the VPN Broadband Router.

Using "Specify an IP Address"

If your PC is already configured, check with your network administrator before making the following changes:

- On the *Gateway* tab, enter the VPN Broadband Router's IP address in the *New Gateway* field and click *Add*, as shown below. Your LAN administrator can advise you of the IP Address they assigned to the VPN Broadband Router.

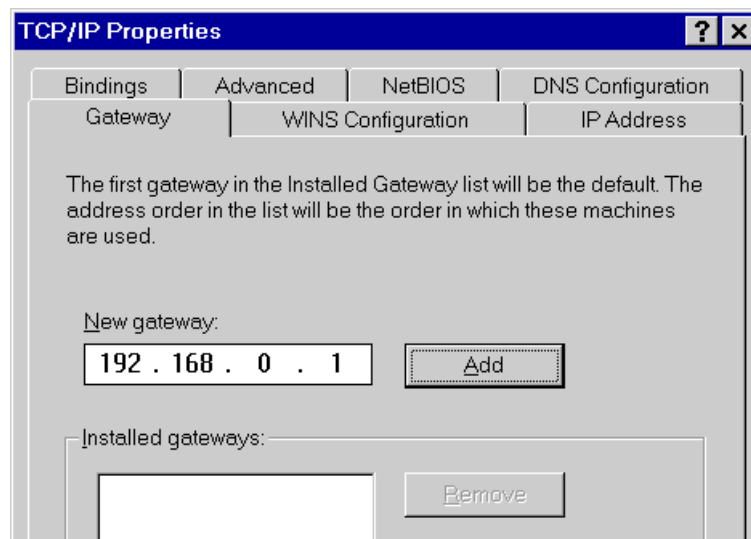


Figure 12: Gateway Tab (Win 95/98)

- On the *DNS Configuration* tab, ensure *Enable DNS* is selected. If the *DNS Server Search Order* list is empty, enter the DNS address provided by your ISP in the fields beside the *Add* button, then click *Add*.

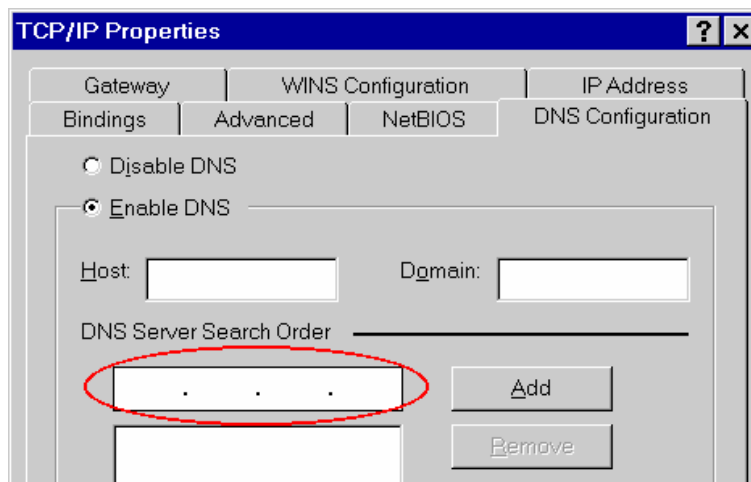


Figure 13: DNS Tab (Win 95/98)

Checking TCP/IP Settings - Windows 2000:

1. Select *Control Panel - Network and Dial-up Connection*.
2. Right - click the *Local Area Connection* icon and select *Properties*. You should see a screen like the following:

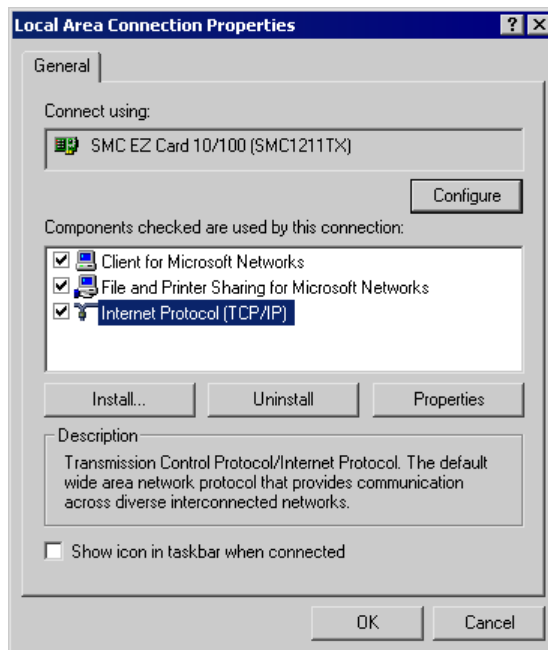


Figure 14: Network Configuration (Win 2000)

3. Select the *TCP/IP* protocol for your network card.
4. Click on the *Properties* button. You should then see a screen like the following.

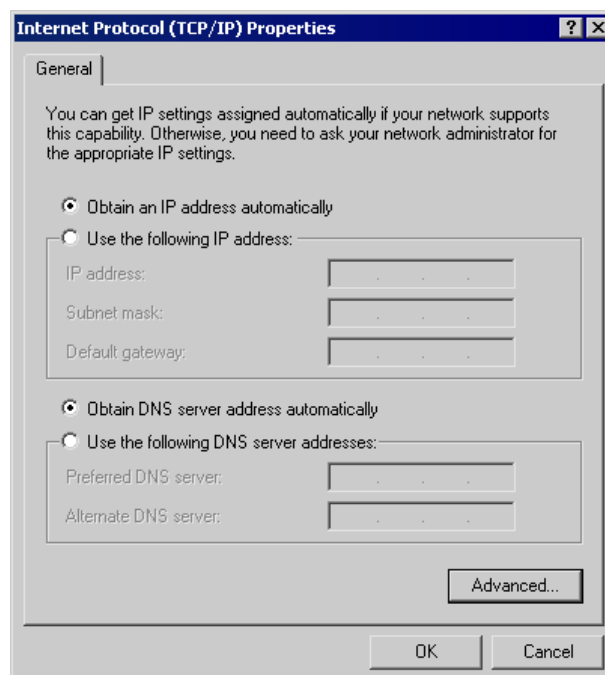


Figure 15: TCP/IP Properties (Win 2000)

5. Ensure your TCP/IP settings are correct, as described below.

Using DHCP

To use DHCP, select the radio button *Obtain an IP Address automatically*. This is the default Windows setting. **Using this is recommended.** By default, the VPN Broadband Router will act as a DHCP Server.

Restart your PC to ensure it obtains an IP Address from the VPN Broadband Router.

Using a fixed IP Address ("Use the following IP Address")

If your PC is already configured, check with your network administrator before making the following changes.

- Enter the VPN Broadband Router 's IP address in the *Default gateway* field and click *OK*. (Your LAN administrator can advise you of the IP Address they assigned to the VPN Broadband Router.)
- If the *DNS Server* fields are empty, select *Use the following DNS server addresses*, and enter the DNS address or addresses provided by your ISP, then click *OK*.

Checking TCP/IP Settings - Windows XP

1. Select *Control Panel - Network Connection*.
2. Right click the *Local Area Connection* and choose *Properties*. You should see a screen like the following:

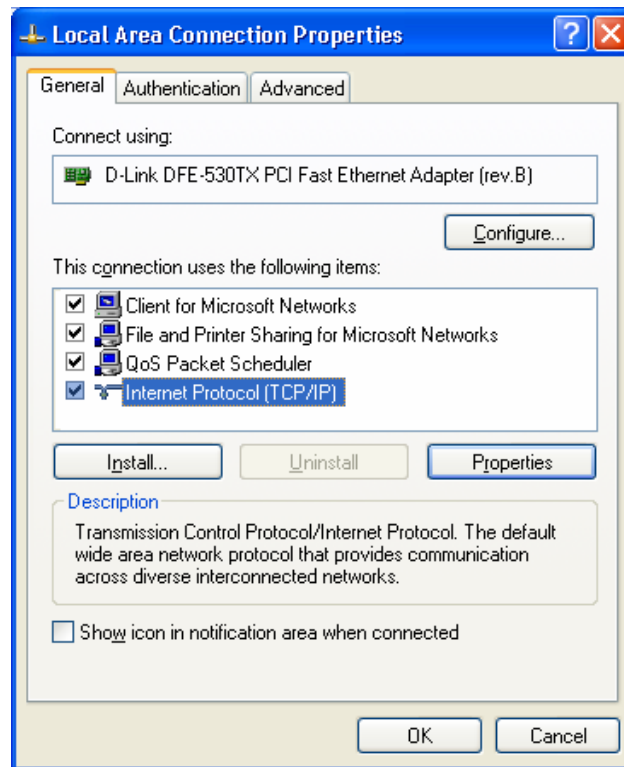


Figure 16: Network Configuration (Windows XP)

3. Select the *TCP/IP* protocol for your network card.
4. Click on the *Properties* button. You should then see a screen like the following.

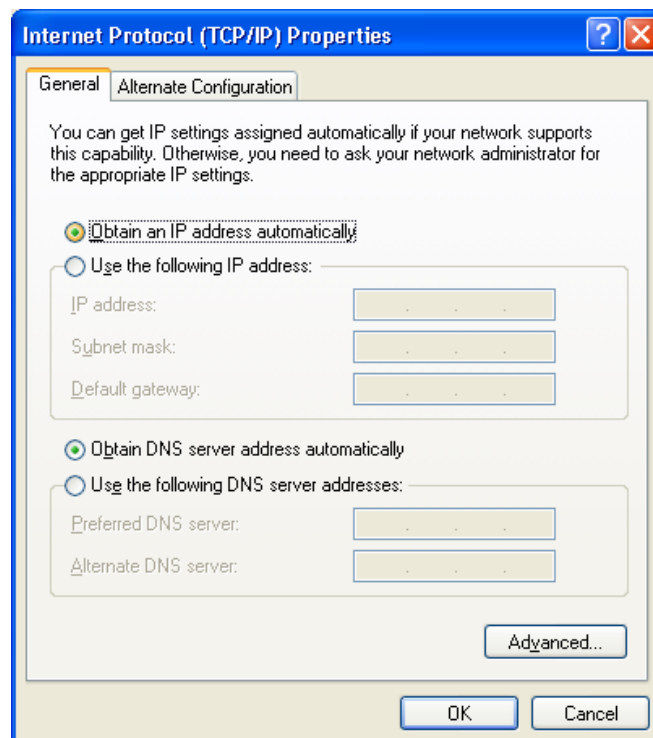


Figure 17: TCP/IP Properties (Windows XP)

5. Ensure your TCP/IP settings are correct.

Using DHCP

To use DHCP, select the radio button *Obtain an IP Address automatically*. This is the default Windows setting. **Using this is recommended.** By default, the VPN Broadband Router will act as a DHCP Server.

Restart your PC to ensure it obtains an IP Address from the VPN Broadband Router.

Using a fixed IP Address ("Use the following IP Address")

If your PC is already configured, check with your network administrator before making the following changes.

- In the *Default gateway* field, enter the VPN Broadband Router 's IP address and click *OK*. Your LAN administrator can advise you of the IP Address they assigned to the VPN Broadband Router.
- If the *DNS Server* fields are empty, select *Use the following DNS server addresses*, and enter the DNS address or addresses provided by your ISP, then click *OK*.

Internet Access

To configure your PCs to use the VPN Broadband Router for Internet access:

- Ensure that the DSL modem, Cable modem, or other permanent connection is functional.
- Use the following procedure to configure your Browser to access the Internet via the LAN, rather than by a Dial-up connection.

For Windows 9x/ME/2000

1. Select *Start Menu - Settings - Control Panel - Internet Options*.
2. Select the *Connection* tab, and click the *Setup* button.
3. Select "I want to set up my Internet connection manually, or I want to connect through a local area network (LAN)" and click *Next*.
4. Select "I connect through a local area network (LAN)" and click *Next*.
5. Ensure all of the boxes on the following Local area network Internet Configuration screen are **unchecked**.
6. Check the "No" option when prompted "Do you want to set up an Internet mail account now?".
7. Click *Finish* to close the Internet Connection Wizard.
Setup is now completed.

For Windows XP

1. Select *Start Menu - Control Panel - Network and Internet Connections*.
2. Select *Set up or change your Internet Connection*.
3. Select the *Connection* tab, and click the *Setup* button.
4. Cancel the pop-up "Location Information" screen.
5. Click *Next* on the "New Connection Wizard" screen.
6. Select "Connect to the Internet" and click *Next*.
7. Select "Set up my connection manually" and click *Next*.
8. Check "Connect using a broadband connection that is always on" and click *Next*.
9. Click *Finish* to close the New Connection Wizard.
Setup is now completed.

Accessing AOL

To access AOL (America On Line) through the VPN Broadband Router, the *AOL for Windows* software must be configured to use TCP/IP network access, rather than a dial-up connection. The configuration process is as follows:

- Start the *AOL for Windows* communication software. Ensure that it is Version 2.5, 3.0 or later. This procedure will not work with earlier versions.
- Click the *Setup* button.
- Select *Create Location*, and change the location name from "New Locality" to "VPN Broadband Router".
- Click *Edit Location*. Select *TCP/IP* for the *Network* field. (Leave the *Phone Number* blank.)
- Click *Save*, then *OK*.
Configuration is now complete.
- Before clicking "Sign On", always ensure that you are using the "VPN Broadband Router" location.

Macintosh Clients

From your Macintosh, you can access the Internet via the VPN Broadband Router. The procedure is as follows.

1. Open the TCP/IP Control Panel.
2. Select *Ethernet* from the *Connect via* pop-up menu.
3. Select *Using DHCP Server* from the *Configure* pop-up menu. The DHCP Client ID field can be left blank.
4. Close the TCP/IP panel, saving your settings.

Note:

If using manually assigned IP addresses instead of DHCP, the required changes are:

- Set the *Router Address* field to the VPN Broadband Router's IP Address.
- Ensure your DNS settings are correct.

Linux Clients

To access the Internet via the VPN Broadband Router, it is only necessary to set the VPN Broadband Router as the "Gateway".

Ensure you are logged in as "root" before attempting any changes.

Fixed IP Address

By default, most Unix installations use a fixed IP Address. If you wish to continue using a fixed IP Address, make the following changes to your configuration.

- Set your "Default Gateway" to the IP Address of the VPN Broadband Router.
- Ensure your DNS (Name server) settings are correct.

To act as a DHCP Client (recommended)

The procedure below may vary according to your version of Linux and X -windows shell.

1. Start your X Windows client.
2. Select *Control Panel - Network*
3. Select the "Interface" entry for your Network card. Normally, this will be called "eth0".
4. Click the *Edit* button, set the "protocol" to "DHCP", and save this data.
5. To apply your changes
 - Use the "Deactivate" and "Activate" buttons, if available.
 - OR, restart your system.

Other Unix Systems

To access the Internet via the VPN Broadband Router:

- Ensure the "Gateway" field for your network card is set to the IP Address of the VPN Broadband Router.
- Ensure your DNS (Name Server) settings are correct.

Chapter 5

Operation and Status

5

This Chapter details the operation of the VPN Broadband Router and the status screens.

Operation

Once both the VPN Broadband Router and the PCs are configured, operation is automatic.

However, there are some situations where additional Internet configuration may be required:

- If using Internet-based **Communication Applications**, it may be necessary to specify which PC receives an incoming connection. Refer to *Chapter 6 - Internet Features* for further details.
- Applications which use non-standard connections or port numbers may be blocked by the VPN Broadband Router's built-in firewall. You can define such applications as **Special Applications** to allow them to function normally. Refer to *Chapter 6 - Internet Features* for further details.
- Some non-standard applications may require use of the **DMZ** feature. Refer to *Chapter 6 - Internet Features* for further details.

Status Screen

Use the **Status** link on the main menu to view this screen.

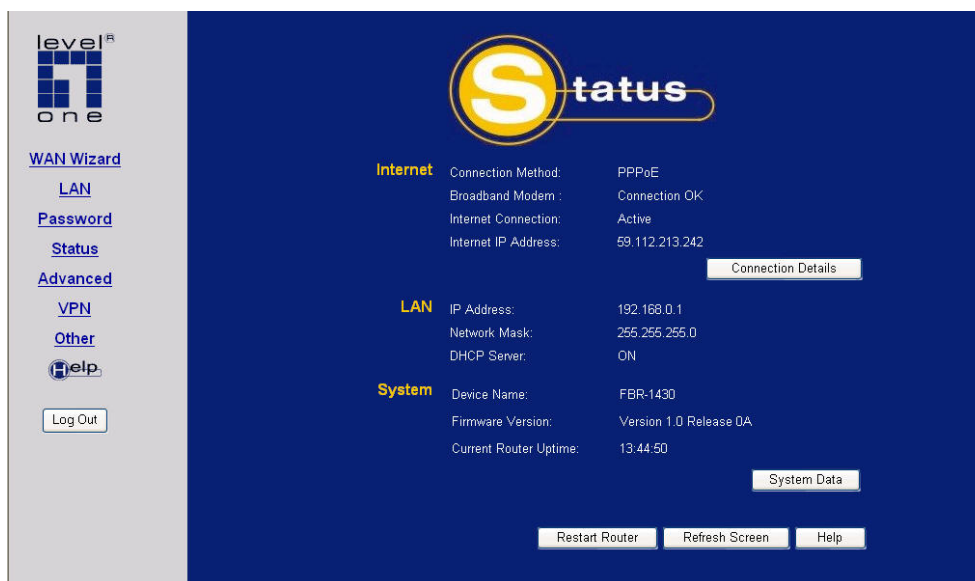


Figure 18: Status Screen

Data - Status Screen

Internet	
Connection Method	This indicates the current connection method, as set in the WAN Wizard setup.
Broadband Modem	This shows the connection status of the modem.
Internet Connection	Current connection status: <ul style="list-style-type: none"> • Active • Idle • Unknown

	<ul style="list-style-type: none"> Failed <p>If there is an error, you can click the "Connection Details" button to find out more information.</p>
Internet IP Address	This IP Address is allocated by the ISP (Internet Service Provider).
"Connection Details" Button	Click this button to open a sub-window and view a detailed description of the current connection. Depending on the type of connection, a "log" may also be available.
LAN	
IP Address	The IP Address of the VPN Broadband Router.
Network Mask	The Network Mask (Subnet Mask) for the IP Address above.
DHCP Server	<p>This shows the status of the DHCP Server function - either "Enabled" or "Disabled".</p> <p>For additional information about the PCs on your LAN, and the IP addresses allocated to them, use the <i>PC Database</i> option on the <i>Other</i> menu.</p>
System	
Device Name	This displays the current name of the VPN Broadband Router.
Firmware Version	The current version of the firmware installed in the VPN Broadband Router.
"System Data" Button	Clicking this button will open a Window which lists all system details and settings.
Buttons	
Connection Details	View the details of the current Internet connection. The sub-screen displayed will depend on the connection method used. See the following sections for details of each sub-screen.
System Data	Display all system information in a sub-window.
Restart Router	Restart (reboot) the Router. You will have to wait for the restart to be completed before continuing.
Refresh Screen	Update the data displayed on screen.

Connection Status - PPPoE

If using PPPoE (PPP over Ethernet), a screen like the following example will be displayed when the "Connection Details" button is clicked.

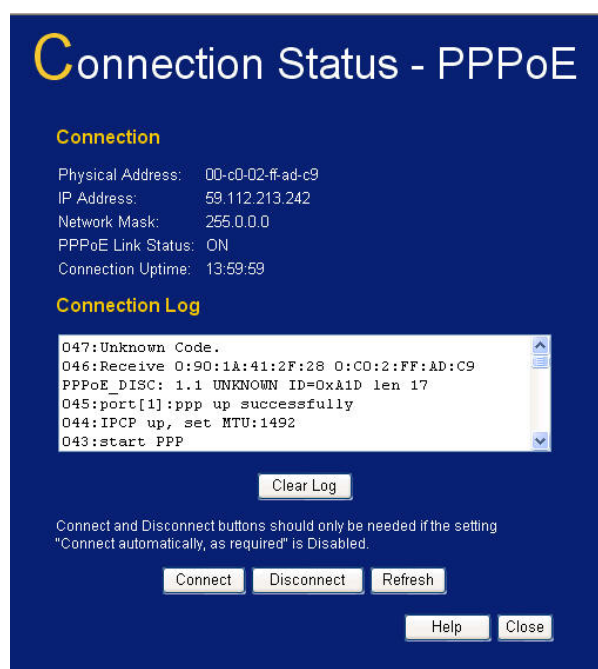


Figure 19: PPPoE Status Screen

Data - PPPoE Screen

Connection	
Physical Address	The hardware address of this device, as seen by remote devices on the Internet. (This is different to the hardware address seen by devices on the local LAN.)
IP Address	The IP Address of this device, as seen by Internet users. This address is allocated by your ISP (Internet Service Provider).
Network Mask	The Network Mask associated with the IP Address above.
PPPoE Link Status	<p>This indicates whether or not the connection is currently established.</p> <ul style="list-style-type: none"> If the connection does not exist, the "Connect" button can be used to establish a connection. If the connection currently exists, the "Disconnect" button can be used to break the connection.
Connection Log	
Connection Log	<ul style="list-style-type: none"> The Connection Log shows status messages relating to the existing connection. The most common messages are listed in the table below. The "Clear Log" button will restart the Log, while the Refresh button will update the messages shown on screen.
Buttons	
Connect	If not connected, establish a connection to your ISP.
Disconnect	If connected to your ISP, hang up the connection.
Clear Log	Delete all data currently in the Log. This will make it easier to read new messages.
Refresh	Update the data on screen.

Connection Log Messages

Message	Description
Connect on Demand	Connection attempt has been triggered by the "Connect automatically, as required" setting.
Manual connection	Connection attempt started by the "Connect" button.
Reset physical connection	Preparing line for connection attempt.
Connecting to remote server	Attempting to connect to the ISP's server.
Remote Server located	ISP's Server has responded to connection attempt.
Start PPP	Attempting to login to ISP's Server and establish a PPP connection.
PPP up successfully	Able to login to ISP's Server and establish a PPP connection.
Idle time-out reached	The connection has been idle for the time period specified in the "Idle Time-out" field. The connection will now be terminated.
Disconnecting	The current connection is being terminated, due to either the "Idle Time-out" above, or "Disconnect" button being clicked.
Error: Remote Server not found	ISP's Server did not respond. This could be a Server problem, or a problem with the link to the Server.
Error: PPP Connection failed	Unable to establish a PPP connection with the ISP's Server. This could be a login problem (name or password) or a Server problem.
Error: Connection to Server lost	The existing connection has been lost. This could be caused by a power failure, a link failure, or Server failure.
Error: Invalid or unknown packet type	The data received from the ISP's Server could not be processed. This could be caused by data corruption (from a bad link), or the Server using a protocol which is not supported by this device.

Connection Status - PPTP

If using PPTP (Peer-to-Peer Tunneling Protocol), a screen like the following example will be displayed when the "Connection Details" button is clicked.

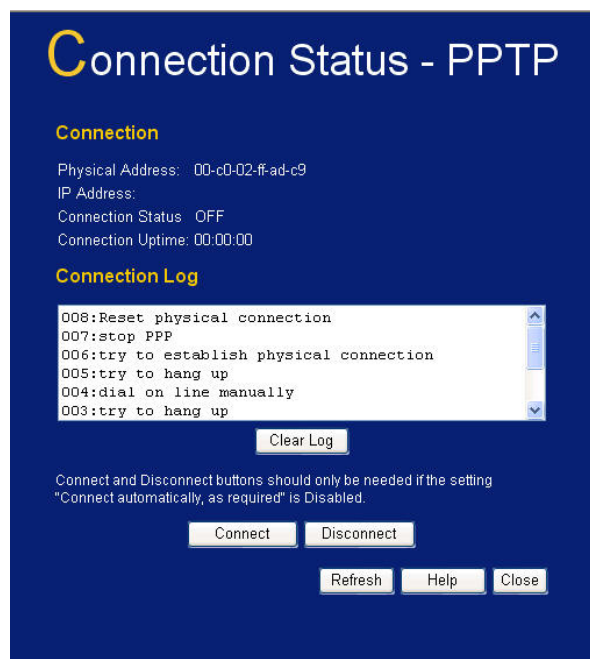


Figure 20: PPTP Status Screen

Data - PPTP Screen

Connection	
Physical Address	The hardware address of this device, as seen by remote devices on the Internet. (This is different to the hardware address seen by devices on the local LAN.)
IP Address	The IP Address of this device, as seen by Internet users. This address is allocated by your ISP (Internet Service Provider).
PPTP Status	<p>This indicates whether or not the connection is currently established.</p> <ul style="list-style-type: none"> If the connection does not exist, the "Connect" button can be used to establish a connection. If the connection currently exists, the "Disconnect" button can be used to break the connection.
Connection Log	
Connection Log	<ul style="list-style-type: none"> The Connection Log shows status messages relating to the existing connection. The "Clear Log" button will restart the Log, while the Refresh button will update the messages shown on screen.
Buttons	
Connect	If not connected, establish a connection to your ISP.
Disconnect	If connected to your ISP, hang up the connection.
Clear Log	Delete all data currently in the Log. This will make it easier to read new messages.
Refresh	Update the data on screen.

Connection Status - Telstra Big Pond

An example screen is shown below.

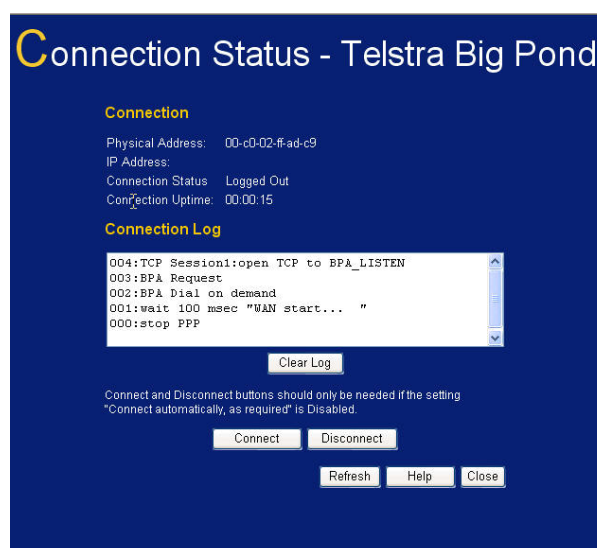


Figure 21: Telstra Big Pond Status Screen

Data - Telstra Big Pond Screen

Connection	
Physical Address	The hardware address of this device, as seen by remote devices. (This is different to the hardware address seen by devices on the local LAN.)
IP Address	The IP Address of this device, as seen by Internet users. This address is allocated by your ISP (Internet Service Provider).
Connection Status	<p>This indicates whether or not the connection is currently established.</p> <ul style="list-style-type: none"> • If the connection does not exist, the "Connect" button can be used to establish a connection. • If the connection currently exists, the "Disconnect" button can be used to break the connection. • Normally, it is not necessary to use the Connect and Disconnect buttons unless the setting "Connect automatically, as required" is disabled.
Connection Log	
Connection Log	<ul style="list-style-type: none"> • The Connection Log shows status messages relating to the existing connection. • The Clear Log button will restart the Log, while the Refresh button will update the messages shown on screen.
Buttons	
Connect	If not connected, establish a connection to Telstra Big Pond.
Disconnect	If connected to Telstra Big Pond, terminate the connection.
Clear Log	Delete all data currently in the Log. This will make it easier to read new messages.
Refresh	Update the data on screen.

Connection Details - SingTel RAS

If using the SingTel RAS access method, a screen like the following example will be displayed when the "Connection Details" button is clicked.

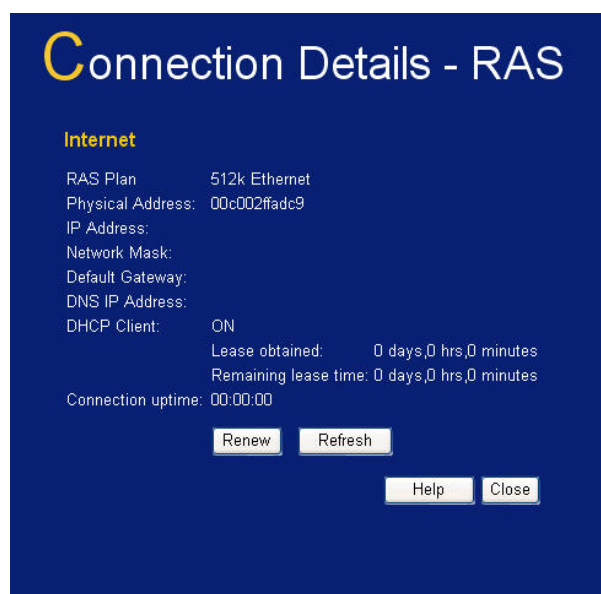


Figure 22: Connection Details - SingTel RAS

Data - SingTel RAS Screen

Internet	
RAS Plan	The RAS Plan which is currently used.
Physical Address	The hardware address of this device, as seen by remote devices on the Internet. (This is different to the hardware address seen by devices on the local LAN.)
IP Address	The IP Address of this device, as seen by Internet users. This address is allocated by your ISP (Internet Service Provider).
Network Mask	The Network Mask associated with the IP Address above.
Default Gateway	The IP Address of the remote Gateway or Router associated with the IP Address above.
DNS IP Address	The IP Address of the Domain Name Server which is currently used.
DHCP Client	<p>This will show "Enabled" or "Disabled", depending on whether or not this device is functioning as a DHCP client.</p> <p>If "Enabled" the "Remaining lease time" field indicates when the IP Address allocated by the DHCP Server will expire. The lease is automatically renewed on expiry; use the "Renew" button if you wish to manually renew the lease immediately.</p>
Buttons	
Release/Renew Button will display EITHER "Release" OR "Renew"	<p>This button is only useful if the IP address shown above is allocated automatically on connection. (Dynamic IP address). If you have a Fixed (Static) IP address, this button has no effect.</p> <ul style="list-style-type: none"> If the ISP's DHCP Server has NOT allocated an IP Address for the VPN Broadband Router, this button will say "Renew". Clicking the "Renew" button will attempt to re-establish the connection and obtain an IP Address from the ISP's DHCP Server. If an IP Address has been allocated to the VPN Broadband

	Router (by the ISP's DHCP Server), this button will say "Release". Clicking the "Release" button will break the connection and release the IP Address.
Refresh	Update the data shown on screen.

Connection Details - Fixed/Dynamic IP Address

If your access method is "Direct" (no login), a screen like the following example will be displayed when the "Connection Details" button is clicked.

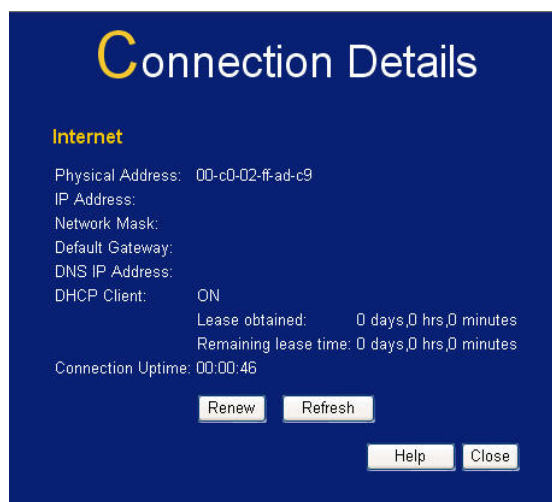


Figure 23: Connection Details - Fixed/Dynamic IP Address

Data - Fixed/Dynamic IP address Screen

Internet	
Physical Address	The hardware address of this device, as seen by remote devices on the Internet. (This is different to the hardware address seen by devices on the local LAN.)
IP Address	The IP Address of this device, as seen by Internet users. This address is allocated by your ISP (Internet Service Provider).
Network Mask	The Network Mask associated with the IP Address above.
Default Gateway	The IP Address of the remote Gateway or Router associated with the IP Address above.
DNS IP Address	The IP Address of the Domain Name Server which is currently used.
DHCP Client	<p>This will show "Enabled" or "Disabled", depending on whether or not this device is functioning as a DHCP client.</p> <p>If "Enabled" the "Remaining lease time" field indicates when the IP Address allocated by the DHCP Server will expire. The lease is automatically renewed on expiry; use the "Renew" button if you wish to manually renew the lease immediately.</p>
Buttons	
Release/Renew Button will display EITHER "Release" OR "Renew"	<p>This button is only useful if the IP address shown above is allocated automatically on connection. (Dynamic IP address). If you have a Fixed (Static) IP address, this button has no effect.</p> <ul style="list-style-type: none"> If the ISP's DHCP Server has NOT allocated an IP Address for the VPN Broadband Router, this button will say "Renew". Clicking the "Renew" button will attempt to re-establish the connection and obtain an IP Address from the ISP's DHCP Server. If an IP Address has been allocated to the VPN Broadband Router (by the ISP's DHCP Server), this button will say "Release". Clicking the "Release" button will break the connection and release the IP Address.

Refresh	Update the data shown on screen.
----------------	----------------------------------

Chapter 6

Internet Features

6

This Chapter explains when and how to use the VPN Broadband Router's "Internet" Features.

Overview

The following advanced features are provided.

- WAN Port Configuration
- Advanced Internet
 - Communication Applications
 - Special Applications
 - Multi-DMZ
 - URL filter
- Dynamic DNS
- Virtual Servers
- Options

WAN Port Configuration

The WAN Port Configuration screen provides an alternative to using the Wizard. It can be accessed from the **Internet** menu under **Advanced** section. An example screen is shown below.

Figure 24: WAN Port Configuration Screen

Data – WAN Port Configuration Screen

Identification	
Hostname	Normally, there is no need to change the default name, but if your ISP requests that you use a particular “Hostname”, enter it here.
Domain name	If your ISP provided a domain name, enter it here. Otherwise, this may be left blank.
MAC Address	Also called Network Adapter Address or Physical Address. This is a low-level identifier, as seen from the WAN port. Normally there is no need to change this, but some ISPs require a particular value, often that of the PC initially used for Internet access. You can use the Copy from PC button to copy your PC's address into this field, the Default button to insert the default value, or enter a value directly.
IP Address	
IP Address is assigned automatically	Also called Dynamic IP Address . This is the default, and the most common. Leave this selected if your ISP allocates an IP Address to the VPN Broadband Router upon connection.

Specified IP Address	<p>Also called Static IP Address. Select this if your ISP has allocated you a fixed IP Address. If this option is selected, the following data must be entered.</p> <ul style="list-style-type: none"> • IP Address. The IP Address allocated by the ISP. • Network Mask (Not required for PPPoE) This is also supplied by your ISP. It must be compatible with the IP Address above. • Gateway IP Address (Not required for PPPoE) The address of the router or gateway, as supplied by your ISP.
NAT	
Enable NAT	<p>NAT (Network Address Translation) is the technology which allows all PCs on your LAN to share the Internet IP address allocated to the WAN port on this Router. From the Internet, all PCs appear to have the same IP address.</p> <p>For normal operation, this setting must be ENABLED.</p>
Disable NAT	<p>Disabling NAT will disable Internet access, unless all PCs have valid Internet IP addresses.</p> <p>If you wish to use this device for Routing ONLY (and NOT for Internet access), then NAT should be disabled.</p>
DNS	
Automatically obtain from Server	<p>The DNS (Domain Name Server) address will be obtained automatically from your ISP's server. Note that if using a fixed IP address, with no login (login is set to "None"), then no Server is used, and this option cannot be used.</p>
Use this DNS	<p>If this option is selected, you must enter the IP address of the DNS (Domain Name Server) you wish to use.</p> <p>Note: If the DNS is unavailable, the "Backup DNS", entered on the <i>Internet - Options</i> screen, will be used.</p>
Login	
Login Method	<p>If your ISP does not use a login method (username, password) for Internet access, leave this at the default value "None (Direct connection)"</p> <p>Otherwise, check the documentation from your ISP, select the login method used, and enter the required data.</p> <ul style="list-style-type: none"> • PPPoE - this is the most common login method, widely used with DSL modems. Normally, your ISP will have provided some software to connect and login. This software is no longer required, and should not be used. • PPTP - this is mainly used in Europe. You need to know the PPTP Server address as well as your name and password. • Big Pond Cable - for Australia only. • SingTel RAS - for Singapore only.
Login User Name	The User Name (or account name) provided by your ISP.
Login Password	Enter the password for the login name above.
RAS Plan	For SingTel customers only, select the RAS plan you are on.

Server Address	<p>If using PPTP or Big Pond Cable, enter the address of your ISP's server.</p> <p>For PPPoE or SingTel RAS, the Server address is not required.</p>
Connection behavior	<p>Select the desired option:</p> <ul style="list-style-type: none"> • Automatic Connect/Disconnect An Internet connection is automatically made when required, and disconnected when idle for the time period specified by the "Auto-disconnect Idle Time-out". • Manual Connect/Disconnect You must manually establish and terminate the connection. • Keep alive (maintain connection) The connection will never be disconnected by this device. If disconnected by your ISP, the connection will be re-established immediately. (However, this does not ensure that your Internet IP address will remain unchanged.)
Auto-disconnect Idle Time-out	<p>This field has no effect unless the setting above is <i>Automatic Connect/Disconnect</i>.</p> <p>If Auto-disconnect is being used, enter the desired idle time-out period (in minutes). After the connection to your ISP has been idle for this time period, the connection will be terminated.</p>

Advanced Setup

Advanced Internet

Communication Applications Select an Application: Age of Empires, H323(CUseeME & MS NetMeeting & TGI Phone), ICU II (ICU 2), Internet Phone

Send incoming calls to: Select a PC

Save when finished, not after each change.

Special Applications If an application does not work, you can define it as a Special Application. Special Applications

Multi-DMZ If you have only 1 WAN IP address, only DMZ 1 can be used.

Enable	WAN IP address	PC
1. <input type="checkbox"/>	220.137.59.150	Select a PC
2. <input type="checkbox"/>	0 0 0 0	Select a PC
3. <input type="checkbox"/>	0 0 0 0	Select a PC
4. <input type="checkbox"/>	0 0 0 0	Select a PC
5. <input type="checkbox"/>	0 0 0 0	Select a PC
6. <input type="checkbox"/>	0 0 0 0	Select a PC
7. <input type="checkbox"/>	0 0 0 0	Select a PC

[My PC is not listed](#)

URL Filter ☒ Enable URL Filter Configure URL Filter

Save Cancel Help

Figure 25: Internet Screen

This screen allows configuration of all advanced features relating to Internet access.

- Communication Applications
- Special Applications

- Multi-DMZ
- URL filter

Communication Applications

Most applications are supported transparently by the VPN Broadband Router. But sometimes it is not clear which PC should receive an incoming connection. This problem could arise with the **Communication Applications** listed on this screen.

If this problem arises, you can use this screen to set which PC should receive an incoming connection, as described below.

Communication Applications	
Select an Application	This lists applications which may generate incoming connections, where the destination PC (on your local LAN) is unknown.
Send incoming calls to	<p>This lists the PCs on your LAN.</p> <ul style="list-style-type: none"> • If necessary, you can add PCs manually, using the <i>PC Database</i> option on the <i>Other</i> menu. • For each application listed above, you can choose a destination PC. • There is no need to "Save" after each change; you can set the destination PC for each application, then click "Save".

Special Applications

If you use Internet applications which use non-standard connections or port numbers, you may find that they do not function correctly because they are blocked by the VPN Broadband Router's firewall. In this case, you can define the application as a "Special Application".

Special Applications Screen

This screen can be reached by clicking the *Special Applications* button on the *Advanced Internet* screen. Click *Advanced*, *Advanced Setup* then *Special Applications*

You can then define your Special Applications. You will need detailed information about the application; this is normally available from the supplier of the application.

Also, note that the terms "Incoming" and "Outgoing" on this screen refer to traffic from the client (PC) viewpoint

Special Applications can only be used by 1 user at any time.

	Name	Type	Incoming Ports		Outgoing Ports		
			Start	Finish	Type	Start	Finish
1.	dialpad	udp	51200	51201	udp	51200	51201
2.	paltalk	udp	2090	2091	udp	2090	2091
3.	quicktime	udp	6970	6999	tcp	554	554
4.		udp			udp		
5.		udp			udp		
6.		udp			udp		

Save Cancel Help Close

Figure 26: Special Applications Screen

Data - Special Applications Screen

Checkbox	Use this to Enable or Disable this Special Application as required.
Name	Enter a descriptive name to identify this Special Application.
Incoming Ports	<ul style="list-style-type: none"> • Type - Select the protocol (TCP or UDP) used when you receive data from the special application or service. (Note: Some applications use different protocols for outgoing and incoming data). • Start - Enter the beginning of the range of port numbers used by the application server, for data you receive. If the application uses a single port number, enter it in both the "Start" and "Finish" fields. • Finish - Enter the end of the range of port numbers used by the application server, for data you receive.
Outgoing Ports	<ul style="list-style-type: none"> • Type - Select the protocol (TCP or UDP) used when you send data to the remote system or service. • Start - Enter the beginning of the range of port numbers used by the application server, for data you send to it. If the application uses a single port number, enter it in both the "Start" and "Finish" fields. • Finish - Enter the end of the range of port numbers used by the application server, for data you send to it. If the application uses a single port number, enter it in both the "Start" and "Finish" fields.

Using a Special Application

- Configure the *Special Applications* screen as required.
- On your PC, use the application normally. Remember that only one (1) PC can use each Special application at any time. Also, when 1 PC is finished using a particular Special Application, there may need to be a "Time-out" before another PC can use the same Special Application. The "Time-out" period may be up to 3 minutes.



If an application still cannot function correctly, try using the "DMZ" feature.

Multi-DMZ

This feature, if enabled, allows one (1) or more computers on your LAN to be exposed to all users on the Internet. You can set a DMZ PC for each WAN IP address. If you only have 1 WAN IP addresses, only 1 DMZ PC can be used.

This allows unrestricted 2-way communication between the "DMZ PC" and other Internet users or Servers.

- This allows almost any application to be used on the "DMZ PC".
- The "DMZ PC" will receive all "Unknown" connections and data.
- If the DMZ feature is enabled, you must select the PC to be used as the "DMZ PC".
- To use more than one (1) DMZ, your ISP must assign multiple fixed IP addresses to you. You must enter each IP address; you can then assign a DMZ PC for each IP address.



The "DMZ PC" is effectively outside the Firewall, making it more vulnerable to attacks. For this reason, you should only enable the DMZ feature when required.

URL Filter

The URL Filter allows you to block access to undesirable Web site

- To use this feature, you must define "filter strings". If the "filter string" appears in a requested URL, the request is blocked.
- Enabling the *URL Filter* also affects the *Internet Access Log*. If Enabled, the "Destination" field in the log will display the URL. Otherwise, it will display the IP Address.
- The *URL Filter* can be Enabled or Disabled on the *Advanced Internet* screen.

URL Filter Screen

Click the "Configure URL Filter" button on the *Advanced Internet* screen to access the *URL Filter* screen. An example screen is shown below.

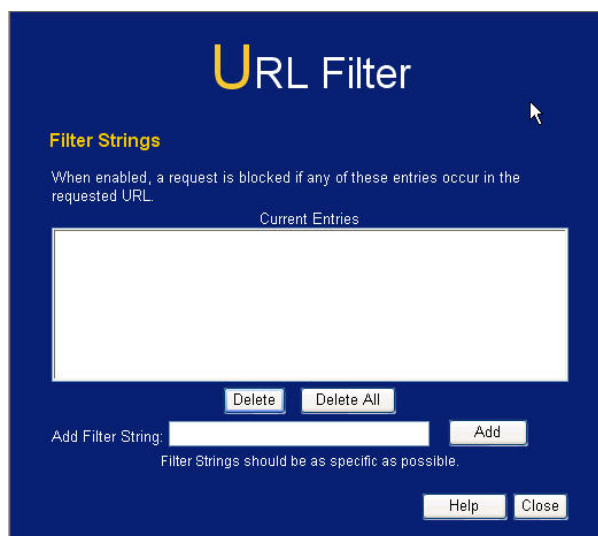


Figure 27: URL Filter Screen

Data - URL Filter Screen

Filter Strings	
Current Entries	This lists any existing entries. If you have not entered any values, this list will be empty.
Add Filter String	To add an entry to the list, enter it here, and click the "Add" button. An entry may be a Domain name (e.g. www.trash.com) or simply a string. (e.g. ads/) Any URL which contains ANY entry ANYWHERE in the URL will be blocked.
Buttons	
Delete/Delete All	Use these buttons to delete the selected entry or all entries, as required. Multiple entries can be selected by holding down the CTRL key while selecting. (On the Macintosh, hold the SHIFT key while selecting.)
Add	Use this to add the current Filter String to the site list.

Dynamic DNS (Domain Name Server)

This free service is very useful when combined with the *Virtual Server* feature. It allows Internet users to connect to your Virtual Servers using a URL, rather than an IP Address.

This also solves the problem of having a dynamic IP address. With a dynamic IP address, your IP address may change whenever you connect, which makes it difficult to connect to you.

The Service works as follows:

1. You must register for the service at one of the listed DDNS Service providers.
2. After registration, follow the Service Provider's procedure to request a Domain Name, and have it allocated to you.
3. Enter your DDNS data on the VPN Broadband Router's DDNS screen (shown below).
4. The VPN Broadband Router will then automatically ensure that your current IP Address is recorded and updated at the DDNS server.
If the DDNS Service provides software to perform this "IP address update"; you should disable the "Update" function, or not use the software at all.
5. From the Internet, users will be able to connect to your Virtual Servers (or DMZ PC) using your Domain name, as shown on this screen.

Dynamic DNS Screen

Select *Advanced* on the main menu, then *Dynamic DNS*, to see a screen like the following:

Figure 28: DDNS Screen

Data - Dynamic DNS Screen

DDNS Service	
DDNS Service	<ul style="list-style-type: none"> You must register for the service at one of the listed Service Providers. You can reach the Service provider's Web Site by selecting them in the list and clicking the "Web Site" button. Apply for a Domain Name, and ensure it is allocated to you. Details of your DDNS account (Name, password, Domain name) must then be entered and saved on this screen. This device will then automatically ensure that your current IP Address is recorded by the DDNS Service Provider.

	<p>(You do NOT need to use the "Client" program provided by some DDNS Service providers.)</p> <ul style="list-style-type: none"> From the Internet, users will now be able to connect to your Virtual Servers (or DMZ PC) using your Domain name.
DDNS Data	
DDNS Service	Select the desired DDNS Service provider.
User Name	Enter your Username for the DDNS Service.
Password/Key	Enter your current password for the DDNS Service.
Domain Name	Enter the domain name allocated to you by the DDNS Service. If you have more than one name, enter the name you wish to use.
DDNS Status	<ul style="list-style-type: none"> This message is returned by the DDNS Server Normally, this message should be something like "Update successful" or "IP address updated". If the message indicates some problem, you need to connect to the DDNS Service provider and correct this problem.

Virtual Servers

This feature allows you to make Servers on your LAN accessible to Internet users. Normally, Internet users would not be able to access a server on your LAN because:

- Your Server does not have a valid external IP Address.
- Attempts to connect to devices on your LAN are blocked by the firewall in this device.

The "Virtual Server" feature solves these problems and allows Internet users to connect to your servers, as illustrated below.

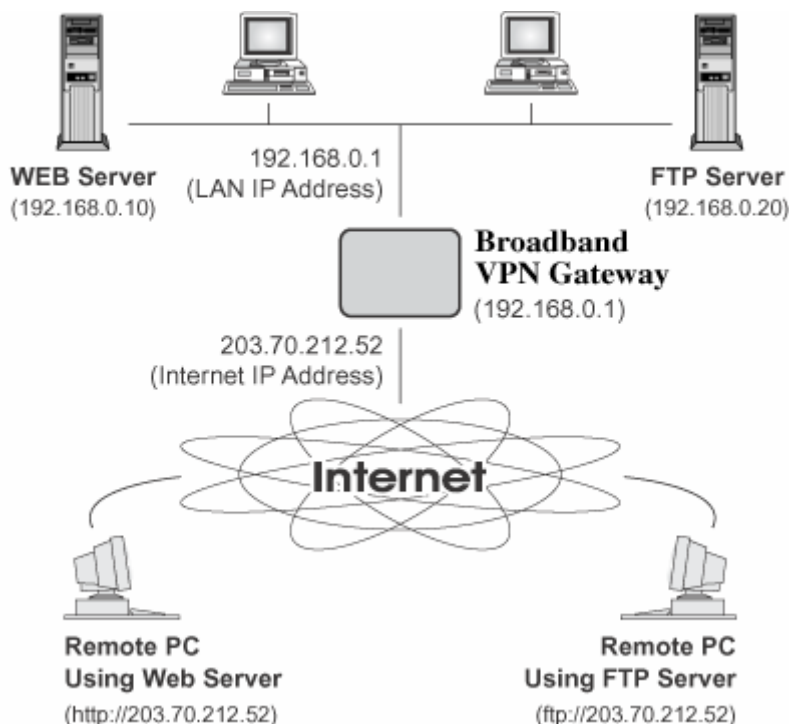


Figure 29: Virtual Servers

IP Address seen by Internet Users

Note that, in this illustration, both Internet users are connecting to the same IP Address, but using different protocols.

To Internet users, all virtual Servers on your LAN have the same IP Address. This IP Address is allocated by your ISP.

This address should be static, rather than dynamic, to make it easier for Internet users to connect to your Servers. However, you can use the *DDNS (Dynamic DNS)* feature to allow users to connect to your Virtual Servers using a URL, instead of an IP Address.

Virtual Servers Screen

The *Virtual Servers* screen is reached by the *Virtual Servers* link on the *Advanced* menu. An example screen is shown below.

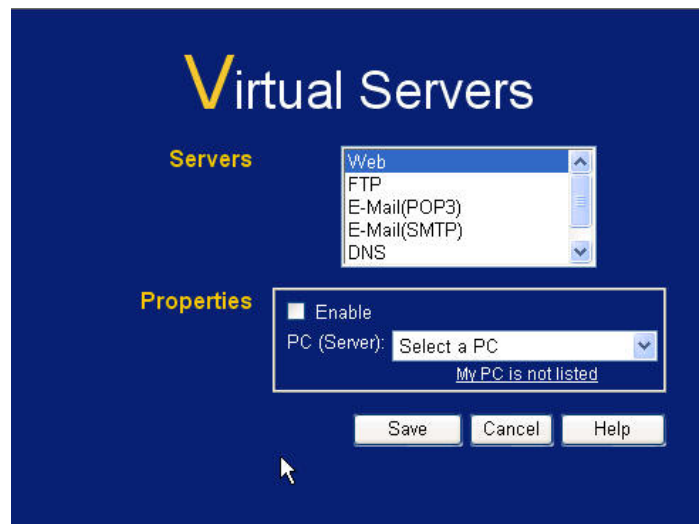


Figure 30: Virtual Servers Screen

This screen lists a number of pre-defined Servers, providing a quick and convenient method to set up the common server types.

Data - Virtual Servers Screen

Servers	
Servers	This lists a number of pre-defined Servers, plus any Servers you have defined. Details of the selected Server are shown in the "Properties" area.
Properties	
Enable	Use this to Enable or Disable support for this Server, as required. <ul style="list-style-type: none"> • If Enabled, any incoming connections will be forwarded to the selected PC. • If Disabled, any incoming connection attempts will be blocked.
PC (Server)	Select the PC for this Server. The PC must be running the appropriate Server software.

Defining your own Virtual Servers

If the type of Server you wish to use is not listed on the *Virtual Servers* screen, you can use the Firewall Rules to allow particular incoming traffic and forward it to a specified PC (Server).

Connecting to the Virtual Servers

Once configured, anyone on the Internet can connect to your Virtual Servers. They must use the Internet IP Address (the IP Address allocated to you by your ISP).

e.g.

`http://203.70.212.52`

`ftp://203.70.212.52`

It is more convenient if you are using a Fixed IP Address from your ISP, rather than Dynamic. However, you can use the *Dynamic DNS* feature, described in the following section, to allow users to connect to your Virtual Servers using a URL, rather than an IP Address.

Options

This screen allows advanced users to enter or change a number of settings. For normal operation, there is no need to use this screen or change any settings.

The screenshot shows a dark blue window titled "Options". Under the "Backup DNS" section, there are two rows of IP address input fields. The first row is labeled "Backup DNS (1) IP Address:" and the second row is labeled "Backup DNS (2) IP Address:". Below these fields, a note states: "These DNS (Domain Name Servers) are used only if the primary DNS is unavailable." Under the "MTU" section, there is a label "MTU (Maximum Transmission Unit):" followed by a text input field containing "1500" and a range "(1..1500) bytes". A note below states: "This setting only affects PPPoE and PPTP connections." At the bottom right, there are three buttons: "Save", "Cancel", and "Help".

Figure 31: Options Screen

Data - Options Screen

Backup DNS	
IP Address	Enter the IP Address of the DNS (Domain Name Servers) here. These DNS will be used only if the primary DNS is unavailable.
MTU	
MTU size	<p>MTU (Maximum Transmission Unit) value should only be changed if advised to do so by Technical Support.</p> <ul style="list-style-type: none"> Enter a value between 1 and 1500. This device will still auto-negotiate with the remote server, to set the MTU size. The smaller of the 2 values (auto-negotiated, or entered here) will be used. For direct connections (not PPPoE or PPTP), the MTU used is always 1500.

Chapter 7

Security Configuration



This Chapter explains the settings available via the “Advanced” configuration section of the “Security” menu.

Overview

The following advanced configurations are provided.

- Access Control
- Firewall Rules
- Logs
- E-mail
- Security Options
- Scheduling
- Services

Access Control

This feature is accessed by the *Access Control* link on the *Advanced, Security* menu.

The Access Control feature allows administrators to restrict the level of Internet Access available to PCs on your LAN. With the default settings, everyone has unrestricted Internet access.

To use this feature:

1. Set the desired restrictions on the "Default" group. All PCs are in the "Default" group unless explicitly moved to another group.
2. Set the desired restrictions on the other groups ("Group 1", "Group 2", "Group 3" and "Group 4") as needed.
3. Assign PC to the groups as required.



Restrictions are imposed by blocking "Services", or types of connections. All common Services are pre-defined. If required, you can also define your own Services.

Access Control Screen

To view this screen, select the *Access Control* link on the Security menu.

Figure 32: Access Control Screen

Data - Access Control Screen

Group	
Group	Select the desired Group. The screen will update to display the settings for the selected Group. Groups are named "Default", "Group 1", "Group 2", "Group 3" and "Group 4", and cannot be re-named.

"Members" Button	<p>Click this button to add or remove members from the current Group.</p> <ul style="list-style-type: none"> • If the current group is "Default", then members can not be added or deleted. This group contains PCs not allocated to any other group. • To remove PCs from the Default Group, assign them to another Group. • To assign PCs to the Default Group, delete them from the Group they are currently in. <p>See the following section for details of the <i>Group Members</i> screen.</p>
Internet Access	
Restrictions	<p>Select the desired options for the current group:</p> <ul style="list-style-type: none"> • None - Nothing is blocked. Use this to create the least restrictive group. • Block all Internet access - All traffic via the WAN port is blocked. Use this to create the most restrictive group. • Block selected Services - You can select which Services are to block. Use this to gain fine control over the Internet access for a group.
Block by Schedule	<p>If Internet access is being blocked, you can choose to apply the blocking only during scheduled times. (If access is not blocked, no Scheduling is possible, and this setting has no effect.)</p> <p>To define the schedule, use the <i>Schedule</i> option on the menu.</p>
Services	<p>This lists all defined Services. Select the Services you wish to block. To select multiple services, hold the CTRL key while selecting. (On the Macintosh, hold the SHIFT key rather than CTRL.)</p>
Buttons	
Members	<p>Click this button to add or remove members from the current Group.</p> <p>If the current group is "Default", then members can not be added or deleted. This group contains PCs not allocated to any other group.</p> <p>See the following section for details of the <i>Group Members</i> screen.</p>
Save	Save the data on screen.
Cancel	Reverse any changes made since the last "Save".
View Log	Click this to open a sub-window where you can view the "Access Control" log. This log shows attempted Internet accesses which have been blocked by the Access Control feature.
Clear Log	Click this to clear and restart the "Access Control" log, making new entries easier to read.

Group Members Screen

This screen is displayed when the *Members* button on the *Access Control* screen is clicked.

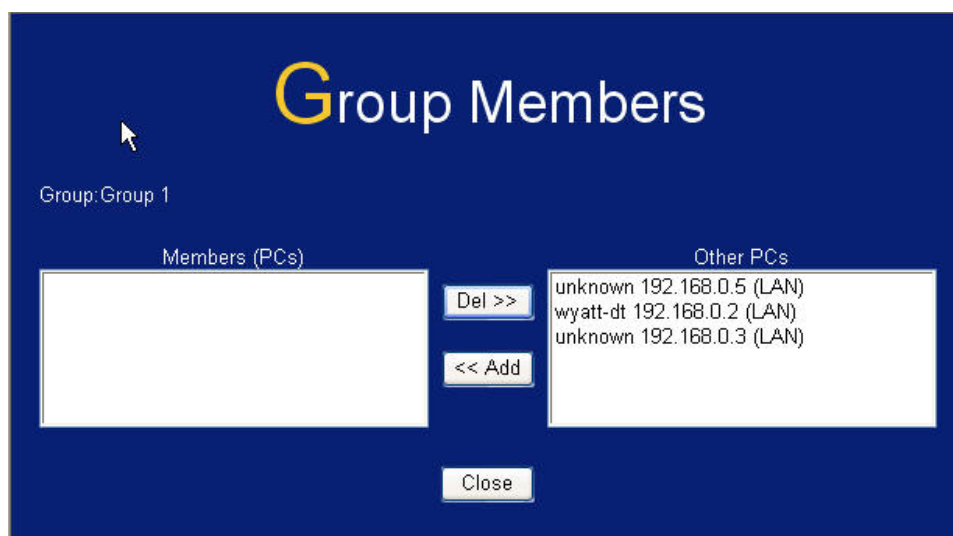


Figure 33: Group Members

Use this screen to add or remove members (PCs) from the current group.

- The "Del >>" button will remove the selected PC (in the *Members* list) from the current group.
- The "<< Add" button will add the selected PC (in the *Other PCs* list) to the current group.



PCs not assigned to any group will be in the "Default" group.
PCs deleted from any other Group will be added to the "Default" group.

Access Control Log

To check the operation of the Access Control feature, an *Access Control Log* is provided. Click the *View Log* button on the *Access Control* screen to view this log.

This log shows attempted Internet accesses which have been **blocked** by the *Access Control* function.

Data shown in this log is as follows:

Date/Time	Date and Time of the attempted access.
Name	If known, the name of the PC whose access was blocked. This name is taken from the <i>Network Clients</i> database
Source IP address	The IP Address of the PC or device whose access request was blocked
MAC address	The hardware or physical address of the PC or device whose access request was blocked
Destination	The destination URL or IP address

Firewall Rules

For normal operation and LAN protection, it is not necessary to use this screen.


The Firewall will always block DoS (Denial of Service) attacks. A DoS attack does not attempt to steal data or damage your PCs, but overloads your Internet connection so you can not use it - the service is unavailable.

As well, you can use this screen to create Firewall rules to block or allow specific traffic. But incorrect configuration may cause serious problems.

This feature is for advanced administrators only!

Firewall Rules Screen

Click the *Firewall Rules* option on the Security menu to see a screen like the following example. This example contains two (2) rules for outgoing traffic.



Since the default rule for outgoing (LAN => WAN) traffic is "Allow", having an "Allow" rule for LAN => WAN only makes sense in combination with another rule.

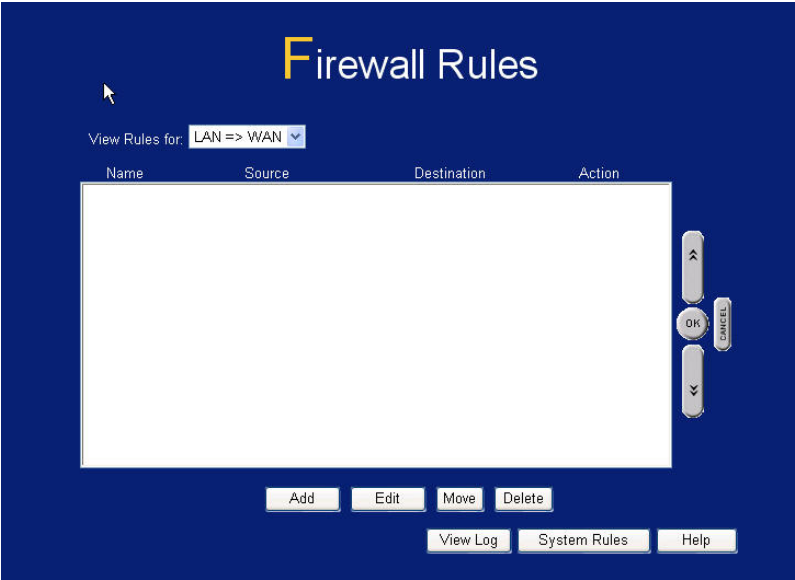


Figure 34: Firewall Rules Screen

Data - Firewall Rules Screen

Rule List	
View Rules for..	Select the desired option; the screen will update and list any current rules. If you have not defined any rules, the list will be empty.

Data	<p>For each rule, the following data is shown:</p> <ul style="list-style-type: none"> • Name - The name you assigned to the rule. • Source - The traffic covered by this rule, defined by the source IP address. If the IP address is followed by ... this indicates there is range of IP addresses, rather than a single address. • Destination - The traffic covered by this rule, defined by destination IP address. If the IP address is followed by ... this indicates there is range of IP addresses, rather than a single address. • Action - Action will be "Forward" or "Block"
Add	To add a new rule, click the "Add" button, and complete the resulting screen. See the following section for more details.
Edit	To Edit or modify an existing rule, select it and click the "Edit" button.
Move	<p>There are 2 ways to change the order of rules</p> <ul style="list-style-type: none"> • Use the up and down indicators on the right to move the selected rule. You must confirm your changes by clicking "OK". If you change your mind before clicking "OK", click "Cancel" to reverse your changes. • Click "Move" to directly specify a new location for the selected rule.
Delete	To delete an existing rule, select it and click the "Delete" button.
View Log	Clicking the "View Log" button will open a new window and display the Firewall log.
System Rules	Clicking the "System Rules" button will open a new window and display the default firewall rules currently applied by the system. These rules cannot be edited, but any rules you create will take precedence over the default rules.

Define Firewall Rule

Clicking the "Add" button in the *Firewall Rules* screen will display a screen like the example below.

Figure 35: Define Firewall Rule

Data - Define Firewall Rule Screen

Name	Enter a suitable name for this rule.
Type	This determines the source and destination ports for traffic covered by this rule. Select the desired option.
Source IP	<p>These settings determine which traffic, based on their source IP address, is covered by this rule.</p> <p>Select the desired option:</p> <ul style="list-style-type: none"> Any - All traffic from the source port is covered by this rule. Single address - Enter the required IP address in the "Start IP address" field. You can ignore the "Subnet Mask" field. Range address - If this option is selected, you must complete both the "Start IP address" and "Finish IP address" fields. You can ignore the "Subnet Mask" field. Subnet address - If this option is selected, enter the required mask in the "Subnet Mask" field.

Dest. IP	<p>These settings determine which traffic, based on their destination IP address, is covered by this rule.</p> <p>Select the desired option:</p> <ul style="list-style-type: none"> Any - All traffic from the source port is covered by this rule. Single address - Enter the required IP address in the "Start IP address" field. You can ignore the "Subnet Mask" field. Range address - If this option is selected, you must complete both the "Start IP address" and "Finish IP address" fields. You can ignore the "Subnet Mask" field. Subnet address - If this option is selected, enter the required mask in the "Subnet Mask" field.
Services	<p>Select the desired Service or Services. This determines which packets are covered by this rule, based on the protocol (TCP or UDP) and port number. If necessary, you can define a new Service on the "Services" screen, by defining the protocols and port numbers used by the Service.</p>
Action	<p>Select the desired action for packets covered by this rule:</p>
Log	<p>This determines whether packets covered by this rule are logged. Select the desired option.</p>

Logs

The Logs record various types of activity on the VPN Broadband Router. This data is useful for troubleshooting, but enabling all logs will generate a large amount of data and adversely affect performance.

Since only a limited amount of log data can be stored in the VPN Broadband Router, log data can also be E-mailed to your PC or sent to a Syslog Server.

Figure 36: Logs Screen

Data - Logs Screen

Enable Logs	
Incoming Traffic	<p>Select the desired option:</p> <ul style="list-style-type: none"> • All IP traffic - this will log all incoming TCP/IP connections, of any type. This will generate the largest logs, and fill the internal log buffer more quickly. • All TCP/UDP/ICMP traffic - These 3 protocols are used by most internet traffic. TCP is used by HTTP, FTP, Telnet, E-mail and other common Internet protocols and applications. UDP is used by Video streams and other communications where speed is more important than guaranteed delivery. ICMP is used by the "ping" and "trace route" applications, and other network diagnostics.

Outgoing Traffic	<p>Select the desired option:</p> <ul style="list-style-type: none"> • All IP traffic - - this will log all outgoing TCP/IP connections, of any type. This will generate the largest logs, and fill the internal log buffer more quickly. • All TCP/UDP/ICMP traffic - These 3 protocols are used by most internet traffic. TCP is used by HTTP, FTP, Telnet, E-mail and other common Internet protocols and applications. UDP is used by Video streams and other communications where speed is more important than guaranteed delivery. ICMP is used by the "ping" and "trace route" applications, and other network diagnostics. Because most connections are logged, the logs will still be large. • Selected Traffic only - This selection will reduce the size of the log considerably. Only HTTP connections are logged. Select the traffic you wish to include: <ul style="list-style-type: none"> • <i>Attempted access to blocked sites</i> - This will only log Web connections which are blocked by the URL filter. • <i>Websites and news groups</i> - This logs successful (allowed) connections to Web Sites and newsgroup servers.
System Log	<p>Select the desired option:</p> <ul style="list-style-type: none"> • Router operations (start up, get time etc) - This option will log normal Router operations. • Connections to the Web - based interface of this Router - This option will log each connection to the Router itself, whenever the Web-based management interface is used. • Other connections and traffic to this Router - This option will log other traffic sent to the Router itself, such as "pings" or RIP (Router Information Protocol) packets. • Known DoS attacks and Port Scans - This will log details of DoS (Denial of Service) attacks which have been blocked by the built-in Firewall. This Firewall uses "Stateful Inspection" technology to block packets which are individually valid, but collectively form an attack. Port scans, where a series of ports are checked to see if they are open (available) are also logged.
VPN	If enabled, the VPN log will record incoming and outgoing VPN connections.
View Log Button	Use this to view each log, as required.
Clear Log Button	Use this to restart the required log. This makes it easier to read the latest entries.
Timezone	
Timezone	Select the correct Timezone for your location. This is required for the date/time shown on the logs to be correct.
Syslog Server	
Enable Syslog	If enabled, log data will be sent to your Syslog Server.
Syslog Server	Enter the IP address of your Syslog Server.
Include	Select the logs you wish to be included in the data sent to the Syslog Server.

E-mail

E-Mail

E-Mail Alert ☐ Send E-mail alert immediately when attacked

SMTP Server Authentication ☐ Authentication

User Name:

Password:

E-Mail Logs ☐ Send logs by E-Mail Send Log Now

Include: ☐ Incoming Traffic
☐ Outgoing Traffic
☐ System Log
☐ VPN Log

Send: ☒ When log is full
☐ Every Sunday at 1 AM

E-mail address:

Subject:

SMTP Server: ☒ Address:
☐ IP address:

Port No. (Default: 25)

Save Cancel Help

Figure 37: E-Mail Screen

Data – E-Mail Screen

E-Mail Alerts	
Send E-Mail alert	If enabled, an E-mail will be sent immediately if a DoS (Denial of Service) attack is detected. If enabled, the E-mail address information must be provided.
E-Mail Logs	
Send Logs by E-Mail	If enabled, logs will be logs to the specified E-mail address. You need to select the Logs to be E-mailed, and complete the E-mail address settings on this screen.
Include	Select the log items to be included in the E-mail.
Send	<p>Select the desired option for sending the log by E-mail.</p> <ul style="list-style-type: none"> When log is full - The time is not fixed. The log will be sent when the log is full, which will depend on the volume of traffic. Every day, Every Monday... - The log is sent on the interval specified. <ul style="list-style-type: none"> If "Every day" is selected, the log is sent at the time specified. If the day is specified, the log is sent once per week, on the specified day. Select the time of day you wish the E-mail to be sent. If the log is full before the time specified to send it, it will be sent regardless.

E-mail address	Enter the E-mail address the Log is to be sent to. The E-mail will also show this address as the Sender's address.
Subject	Enter the text string to be shown in the "Subject" field for the E-mail.
SMTP Server	Enter the address or address or IP address of the SMTP (Simple Mail Transport Protocol) Server you use for outgoing E-mail.
Port No.	Enter the port number used to connect to the SMTP Server. The default value is 25.

Security Options

This screen allows you to set Firewall and other security-related options.

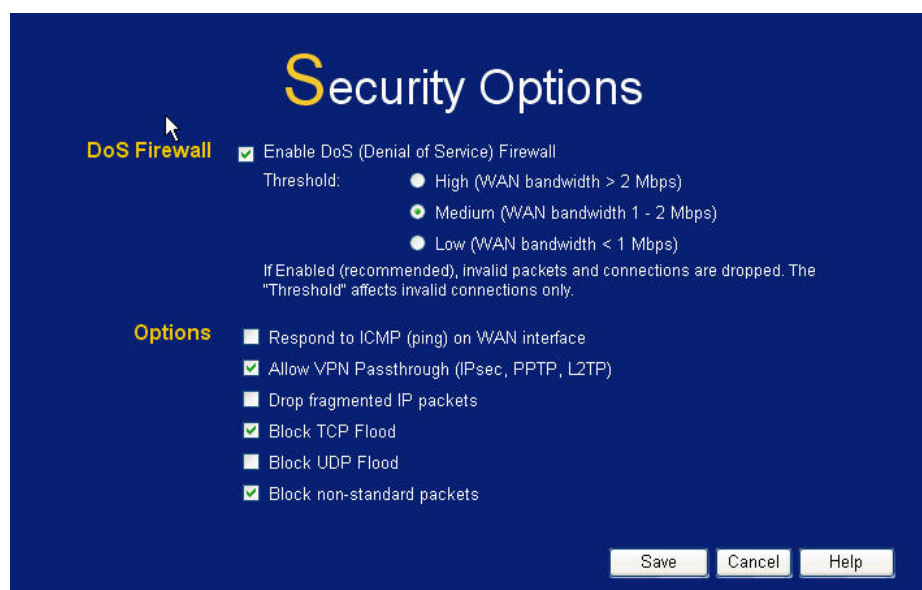


Figure 38: Security Options Screen

Data - Security Options Screen

Firewall	
Enable DoS Firewall	<p>If enabled, DoS (Denial of Service) attacks will be detected and blocked. The default is enabled. It is strongly recommended that this setting be left enabled.</p> <p>Note:</p> <ul style="list-style-type: none"> A DoS attack does not attempt to steal data or damage your PCs, but overloads your Internet connection so you can not use it - the service is unavailable. This device uses "Stateful Inspection" technology. This system can detect situations where individual TCP/IP packets are valid, but collectively they become a DoS attack.
Threshold	<p>This setting affects the number of "half-open" connections allowed.</p> <ul style="list-style-type: none"> A "half-open" connection arises when a remote client contacts the Server with a connection request, but then does not reply to the Server's response. While the optimum number of "half-open" connections allowed (the "Threshold") depends on many factors, the most important factor is the available bandwidth of your Internet connection. Select the setting to match the bandwidth of your Internet connection.

Options	
Respond to ICMP (ping)	<p>The ICMP protocol is used by the "ping" and "trace route" programs, and by network monitoring and diagnostic programs.</p> <ul style="list-style-type: none"> • If checked, the VPN Broadband Router will respond to ICMP packets received from the Internet. • If not checked, ICMP packets from the Internet will be ignored. Disabling this option provides a slight increase in security.
Allow VPN pass-through	<p>If enabled, PCs on the LAN can use VPN software to connect to remote clients via the Internet connection. The protocols supported are:</p> <ul style="list-style-type: none"> • IPSec IPSec protocol is used to establish a secure connection, and is widely used by VPN (Virtual Private Networking) programs. • PPTP PPTP (Point to Point Tunneling Protocol) is widely used by VPN (Virtual Private Networking) programs. • L2TP L2TP is a protocol developed by Cisco for VPNs (Virtual Private Networks).
Drop fragmented IP packets	<p>If enabled, fragmented IP packets are discarded, forcing re-transmission of these packets. In some situations, this could prevent successful communication.</p> <p>Normally, this setting should be disabled.</p>
Block TCP Flood	<p>A TCP flood is excessively large number of TCP connection requests. This is usually a DoS (Denial of Service) attack.</p> <p>This setting should normally be enabled.</p>
Block UDP Flood	<p>A UDP flood is excessively large number of UDP packets. This is usually a DoS (Denial of Service) attack.</p> <p>This setting should normally be enabled.</p>
Block non-standard packets	<p>Abnormal packets are often used by hackers and in DoS attacks, but may also be generated by incorrectly configured network devices. (PCs will normally not generate non-standard packets.)</p> <p>This setting should normally be enabled.</p>

Scheduling

- This schedule can be (optionally) applied to any Access Control Group.
- Blocking will be performed during the scheduled time (between the "Start" and "Finish" times.)
- Two (2) separate sessions or periods can be defined.
- Times must be entered using a 24 hr clock.
- If the time for a particular day is blank, no action will be performed.

Define Schedule Screen

This screen is accessed by the *Scheduling* link on the *Security* menu.

Day	Session 1		Session 2	
	Start	Finish	Start	Finish
Monday	<input type="text"/>	<input type="text"/>	<input type="text"/>	<input type="text"/>
Tuesday	<input type="text"/>	<input type="text"/>	<input type="text"/>	<input type="text"/>
Wednesday	<input type="text"/>	<input type="text"/>	<input type="text"/>	<input type="text"/>
Thursday	<input type="text"/>	<input type="text"/>	<input type="text"/>	<input type="text"/>
Friday	<input type="text"/>	<input type="text"/>	<input type="text"/>	<input type="text"/>
Saturday	<input type="text"/>	<input type="text"/>	<input type="text"/>	<input type="text"/>
Sunday	<input type="text"/>	<input type="text"/>	<input type="text"/>	<input type="text"/>

Save Cancel Help

Figure 39: Define Schedule Screen

Data - Define Schedule Screen

Day	Each day of the week can scheduled independently.
Session 1 Session 2	Two (2) separate sessions or periods can be defined. Session 2 can be left blank if not required.
Start Time	Enter the start using a 24 hr clock.
Finish Time	Enter the finish time using a 24 hr clock.

Services

Services are used in defining traffic to be blocked or allowed by the *Access Control* or *Firewall Rules* features. Many common Services are pre-defined, but you can also define your own services if required.

To view the Services screen, select the *Services* link on the Security menu.

Figure 40: Services Screen

Data - Services Screen

Available Services	
Available Services	This lists all defined Services.
Delete Button	Use this to delete the selected Service from the list. Note that you can only delete Services you have added; the pre-defined services can not be deleted.
Add New Service	
Name	Enter a suitable name for this Service.
Type	Select the correct type for this Service.
Start Port	If the "Type" (above) is TCP, UDP, or TCP/UDP, enter the port number for this Service. If a port range is required, enter the beginning of the range here, and the end of the range in the "Finish Port" field.
Finish Port	If the "Type" (above) is TCP, UDP, or TCP/UDP, this field can be used to enter the end of range of port numbers. This can be left blank if not required.
ICMP Type	If the "Type" (above) is ICMP, enter the ICMP type here. Otherwise, this field should be left blank.

Chapter 8

VPN (IPSec)

8

This Chapter describes the VPN capabilities and configuration required for common situations.

Overview

This section describes the VPN (Virtual Private Network) support provided by your VPN Broadband Router.

A VPN (Virtual Private Network) provides a secure connection between 2 points, over an insecure network - typically the Internet. This secure connection is called a **VPN Tunnel**.

There are many standards and protocols for VPNs. The standard implemented in the VPN Broadband Router is **IPSec**.

IPSec

IPSec is a near-ubiquitous VPN security standard, designed for use with TCP/IP networks. It works at the packet level, and authenticates and encrypts all packets traveling over the VPN Tunnel. Thus, it does not matter what applications are used on your PC. Any application can use the VPN like any other network connection.

IPsec VPNs exchange information through logical connections called **SAs** (Security Associations). An SA is simply a definition of the protocols, algorithms and keys used between the two VPN devices (endpoints).

Each IPsec VPN has two SAs - one in each direction. If **IKE** (Internet Key Exchange) is used to generate and exchange keys, there are also SAs for the IKE connection as well as the IPsec connection.

There are two security modes possible with IPSec:

- **Transport Mode** - the payload (data) part of the packet is encapsulated through encryption but the IP header remains in the clear (unchanged).

The VPN Broadband Router does NOT support Transport Mode.

- **Tunnel Mode** - everything is encapsulated, including the original IP header, and a new IP header is generated. Only the new header is in the clear (i.e. not protected). This system provides enhanced security.

The VPN Broadband Router always uses Tunnel Mode.

IKE

IKE (Internet Key Exchange) is an optional, but widely used, component of IPsec. IKE provides a method of negotiating and generating the keys and IDs required by IPsec. If using IKE, only a single key is required to be provided during configuration. Also, IKE supports using **Certificates** (provided by CAs - Certification Authorities) to authenticate the identity of the remote user or gateway.

If IKE is NOT used, then all keys and IDs (SPIs) must be entered manually, and Certificates can NOT be used. This is called a "Manual Key Exchange".

When using IKE, there are 2 phases to establishing the VPN tunnel:

- **Phase I** is the negotiation and establishment up of the IKE connection.
- **Phase II** is the negotiation and establishment up of the IPsec connection.

Because the IKE and IPsec connections are separate, they have different SAs (security associations).

Policies

VPN configuration settings are stored in **Policies**.

Note that different vendors use different terms. Generally, the terms "VPN Policy", "IPSec Policy", and "IPSec Proposal" have the same meaning. However, some vendors separate IKE Policies (Phase 1 parameters) from IPsec Policies (Phase 2 parameters).

For the VPN Broadband Router; each VPN policy contains both Phase 1 and Phase 2 parameters (if IKE is used). Each policy defines:

- The address of the remote VPN endpoint
- The traffic which is allowed to use the VPN connection.
- The parameters (settings) for the IPsec SA (Security Association)
- If IKE is used, the parameters (settings) for the IKE SA (Security Association)

Generally, you will need at least one (1) VPN Policy for each remote site for which you wish to establish VPN connections.

It is possible, and sometimes necessary, to have multiple Policies for the same remote site. However, you should only Enable one (1) policy at a time. If multiple policies for the same remote site are enabled, the policies are examined in the order in which they are listed, and the first matching policy will be used. While it is possible to change the order of the policies, it may not be easy to get the desired action from multiple policies.

VPN Configuration

The general rule is that each endpoint must have matching Policies, as follows:

VPN Endpoint address	Each VPN endpoint must be configured to initiate or accept connections to the remote VPN client or Gateway. Usually, this requires having a fixed Internet IP address. However, it is possible for a VPN Gateway to accept incoming connections from a remote client where the client's IP address is not known in advance.
Traffic Selector	This determines which outgoing traffic will cause a VPN connection to be established, and which incoming traffic will be accepted. Each endpoint must be configured to pass and accept the desired traffic from the remote endpoint. If connecting 2 LANs, this requires that: <ul style="list-style-type: none"> • Each endpoint must be aware of the IP addresses used on the other endpoint. • The 2 LANs MUST use different IP address ranges.
IKE parameters	If using IKE (recommended), the IKE parameters must match (except for the SA lifetime, which can be different).
IPsec parameters	The IPsec parameters at each endpoint must match.

Common VPN Situations

VPN Pass-through

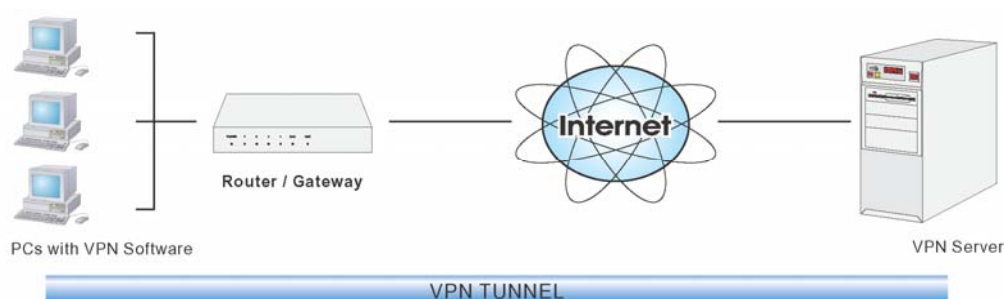


Figure 41: VPN Pass-through

Here, a PC on the LAN behind the Router/Gateway is using VPN software, but the Router/Gateway is NOT acting as a VPN endpoint. It is only allowing the VPN connection.

- The PC software can use any VPN protocol supported by the remote VPN.

- The remote VPN Server must support client PCs which are behind a NAT router, and so have an IP address which is not valid on the Internet.
- The Router/Gateway requires no VPN configuration, since it is not acting as a VPN endpoint.

Client PC to VPN Gateway

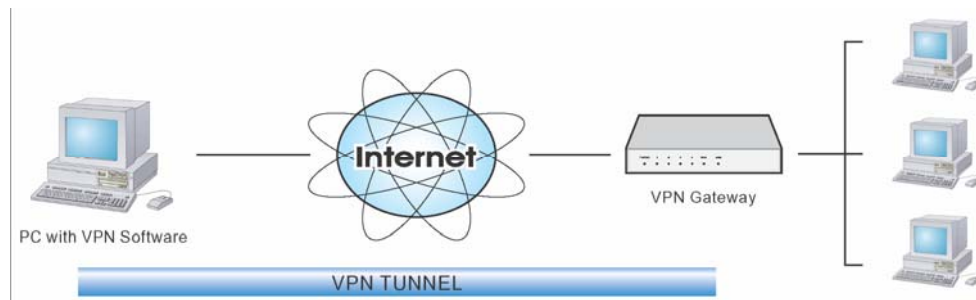


Figure 42: Client PC to VPN Server

In this situation, the PC must run appropriate VPN client software in order to connect, via the Internet, to the VPN Broadband Router. Once connected, the client PC has the same access to LAN resources as PCs on the local LAN (unless restricted by the network administrator).

- IPsec is not the only protocol which can be used in this situation, but the VPN Broadband Router supports IPsec ONLY.
- Windows 2000 and Windows XP include a suitable IPsec VPN client program. Configuration of this client program for use with the VPN Broadband Router is covered later in this document.

Connecting 2 LANs via VPN

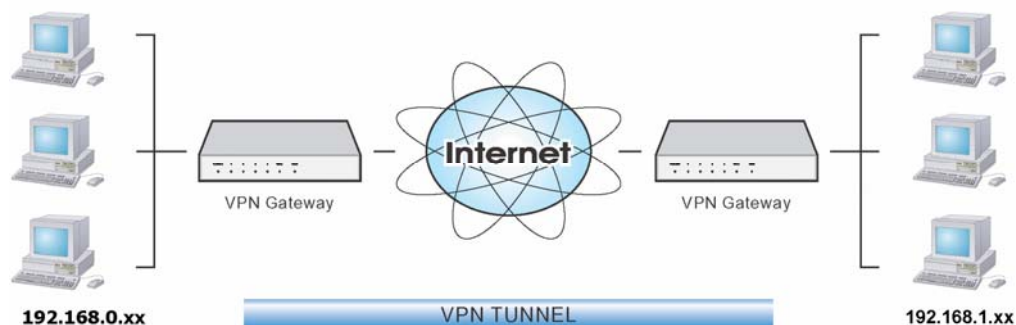


Figure 43: Connecting 2 VPN Gateways

This allows two (2) LANs to be connected. PCs on each endpoint gain secure access to the remote LAN.

- The 2 LANs MUST use different IP address ranges.
- The VPN Policies at each end determine when a VPN tunnel will be established, and what systems on the remote LAN can be accessed once the VPN connection is established.
- It is possible to have simultaneous VPN connections to many remote sites.

VPN Configuration

This section covers the configuration required on the VPN Broadband Router when using Manual Key Exchange (Manual Policies) or IKE (Automatic Policies).

Details of using Certificates are covered in a later section.

VPN Policies Screen

To view this screen, select **VPN Policies** from the VPN menu. This screen lists all existing VPN policies. If no policies exist, the list will be empty.



Figure 44: VPN Policies Screen

Note that the order of policies is important if you have more than one policy for a particular site. In that case, the first matching policy (for the traffic under consideration) will be used.

Data - VPN Policies Screen

VPN List	
Policy Name	The name of the policy. When creating a policy, you should select a suitable name.
Enable	This indicates whether or not the policy is currently enabled. Use the "Enable/Disable" button to toggle the state of the selected policy.
Remote VPN Endpoint	The IP address of the remote VPN endpoint (Gateway or client).
Key Type	This will indicate "Manual" (manual key exchange) or "IKE" (Internet Key Exchange)
Operations	
Add	To add a new policy, click the "Add" button. See the following section for details.
Edit	To Edit or modify an existing policy, select it and click the "Edit" button.

Move	<p>The order in which policies are listed is only important if you have multiple policies for the same remote site. In that case, the first matching policy is used. There are 2 ways to change the order of policies:</p> <ul style="list-style-type: none"> • Use the up and down indicators on the right to move the selected row. You must confirm your changes by clicking "OK". If you change your mind before clicking "OK", click "Cancel" to reverse your changes. • Click "Move" to directly specify a new location for the selected policy.
Enable/Disable	Use this to toggle the On/Off state of the selected policy.
Copy	<p>If you wish to create a policy which is similar to an existing policy, select the policy and click the "Copy" button.</p> <p>Remember that the new policy must have a different name, and there can only be one active (enabled) policy for each remote VPN endpoint.</p>
Delete	To delete an existing policy, select it and click the "Delete" button.
View Log	Clicking the "View Log" button will open a new window and display the VPN log.

Adding a New Policy

1. To create a new VPN Policy, click the *Add New Policy* button on the **VPN Policies** screen. This will start the VPN Wizard, as shown below.

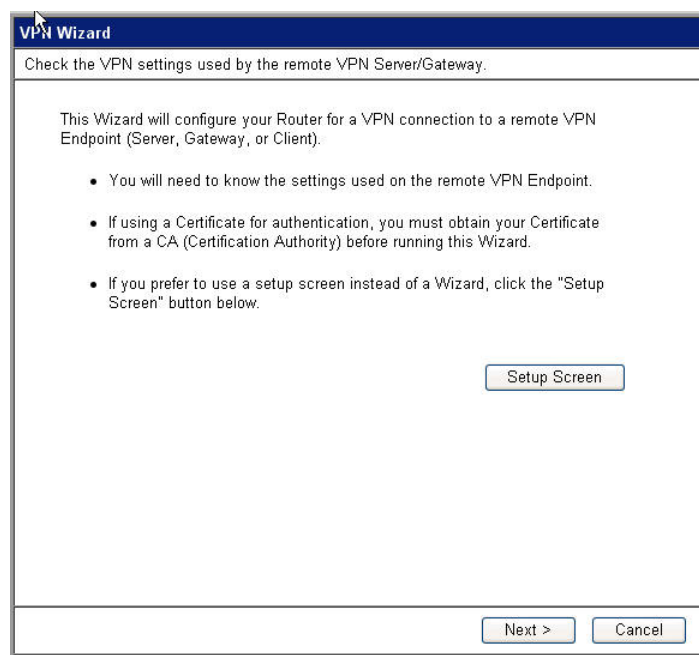


Figure 45: VPN Wizard – Start Screen

- If you prefer to use a single setup screen instead of a Wizard, click the *Setup Screen* button. This is recommended for experienced users only.
- Otherwise, click *Next* to continue. You will see a screen like the following.

Figure 46: VPN Wizard – General Screen

General Settings	
Policy Name	Enter a suitable name. This name is not supplied to the remote VPN. It is used only to help you manage the policies.
Enable Policy	Enable or disable the policy as required. For each remote VPN, only 1 policy can be enabled at any time.
Allow Net-BIOS traffic	Enable this if you require NetBIOS traffic to be transferred through the VPN tunnel. NetBIOS is used by Microsoft (Windows) networking. This setting should not be enabled unless necessary, because it increases traffic volume.
Remote VPN Endpoint	<p>The Internet IP address of the remote VPN endpoint (Gateway or client).</p> <ul style="list-style-type: none"> Dynamic. Select this if the Internet IP address is unknown. In this case, only incoming connections are possible. Fixed. Select this if the remote endpoint has a fixed Internet IP address. If selected, enter the Internet IP address of the remote endpoint. Domain Name. Select this if the remote endpoint has a Domain Name associated with it. If selected, enter the Domain Name of the remote endpoint.
Keys	<p>Select <i>Manually assigned</i> or <i>IKE</i> (Internet Key Exchange) as required.</p> <p>If you are setting up both endpoints, using IKE is recommended.</p>

2. Click *Next* to continue. You will see a screen like the following:

VPN Wizard - Traffic Selector

This traffic will be sent through a VPN tunnel.

Local IP addresses

Type: Subnet address

IP address: 192.168.0.0 ~ 0

Subnet Mask: 255.255.255.0

Remote IP addresses

Type: Subnet address

IP address: 192.168.0.0 ~ 0

Subnet Mask: 255.255.255.0

< Back

Next >

Cancel

Figure 47: VPN Wizard - Traffic Selector Screen

- For outgoing VPN connections, these settings determine which traffic will cause a VPN tunnel to be created, and which traffic will be sent through the tunnel.
- For incoming VPN connections, these settings determine which systems on your local LAN will be available to the remote endpoint.
- The 2 VPN endpoints MUST use different address ranges.
If the addresses were in the same range, traffic intended for the remote VPN would be considered local LAN traffic. So it would not be forwarded to the Gateway.

Local IP addresses	
Type	<div><ul style="list-style-type: none">• Any - no additional data is required. Any IP address is acceptable.<ul style="list-style-type: none">• For outgoing connections, this allows any PC on the LAN to use the VPN tunnel.• For incoming connections, this allows any PC using the remote endpoint to access any PC on your LAN.• Single address - enter an IP address in the "Start IP address" field.• Range address - enter the starting IP address in the "Start IP address" field, and the finish IP address in the "Finish IP address" field.• Subnet address - enter the desired IP address in the "Start IP address" field, and the network mask in the "Subnet Mask" field.<p>The remote VPN must have these IP addresses entered as it's "Remote" addresses.</p></div>

Remote IP addresses	
Type	<ul style="list-style-type: none"> • Single address - enter an IP address in the "Start IP address" field. • Range address - enter the starting IP address in the "Start IP address" field, and the finish IP address in the "Finish IP address" field. • Subnet address - enter the desired IP address in the "Start IP address" field, and the network mask in the "Subnet Mask" field. <p>The remote VPN should have these IP addresses entered as it's "Local" addresses.</p>

3. Click *Next* to continue. The screen you will see depends on whether you previously selected "Manual Key Exchange" or "IKE".

Manual Key Exchange

Figure 48: VPN Wizard - Manual Key Exchange Screen

These settings must match the remote VPN. Note that you cannot use both AH and ESP.

Manually assigned Keys	
AH Authentication	<p>AH (Authentication Header) specifies the authentication protocol for the VPN header, if used. (AH is often NOT used)</p> <p>If AH is not enabled, the following settings can be ignored.</p> <p>Keys</p> <ul style="list-style-type: none"> • The "in" key here must match the "out" key on the remote VPN, and the "out" key here must match the "in" key on the remote VPN. • Keys can be in ASCII or Hex (0..9 A..F) • For MD5, the keys should be 32 hex/16 ASCII characters. • For SHA-1, the keys should be 40 hex/20 ASCII characters. <p>SPI</p>

	<ul style="list-style-type: none"> Each SPI (Security Parameter Index) must be unique. The "in" SPI here must match the "out" SPI on the remote VPN, and the "out" SPI here must match the "in" SPI on the remote VPN. Each SPI should be at least 3 characters.
ESP Encryption	<p>ESP (Encapsulating Security Payload) provides security for the payload (data) sent through the VPN tunnel. Generally, you will want to enable both Encryption and Authentication.</p> <p>Encryption Algorithm</p> <ul style="list-style-type: none"> The 3DES algorithm provides greater security than DES, but is slower. If using AES, you must select the <i>Key Size</i>. If using DES or 3DES, this field is ignored. <p>Key - In / Key - Out</p> <ul style="list-style-type: none"> The "In" key here must match the "Out" key on the remote VPN, and the "Out" key here must match the "In" key on the remote VPN. For DES, keys should be 8 ASCII characters (16 HEX chars). For 3DES, keys should be 24 ASCII characters (48 HEX chars). If using AES encryption, the key input size must match the <i>Key Size</i> selected above.
ESP Authentication	<p>Generally, you should enable ESP Authentication. There is little difference between the available algorithms. Just ensure each endpoint use the same setting.</p> <ul style="list-style-type: none"> The "In" key here must match the "Out" key on the remote VPN, and the "Out" key here must match the "In" key on the remote VPN. Keys can be in ASCII or Hex (0 ~ 9 and A ~ F) For MD5, the keys should be 32 hex/16 ASCII characters. For SHA-1, the keys should be 40 hex/20 ASCII characters.
ESP SPI	<p>This is required if either ESP Encryption or ESP Authentication is enabled.</p> <ul style="list-style-type: none"> Each SPI (Security Parameter Index) must be unique. The "in" SPI here must match the "out" SPI on the remote VPN, and the "out" SPI here must match the "in" SPI on the remote VPN. Each SPI should be at least 3 characters.

For Manual Key Exchange, configuration is now complete.

- Click "Next" to view the final screen.
- On the final screen, click "Finish" to save your settings, then "Close" to exit the Wizard.

IKE Phase 1

If you selected *IKE*, the following screen is displayed after the *Traffic Selector* screen. This screen sets the parameters for the IKE SA.

VPN Wizard - IKE Phase 1 (IKE SA)

These settings must match the remote VPN Endpoint.

Local Identity
 Type: Data:

Remote Identity
 Type: Data:

Authentication ☐ RSA Signature (requires Certificate)
☒ Pre-shared Key

Authentication Algorithm:

Encryption Algorithm: Key Size: (AES only)

IKE Exchange Mode:

Direction:

IKE SA Life Time: (secs)

Diffie-Hellman (DH) Group:

☐ IKE PFS PFS Key Group:

☐ IKE Keep Alive Ping IP Address:

< Back Next > Cancel

Figure 49: VPN Wizard - IKE Phase 1 Screen

IKE Phase 1 (IKE SA)	
Local Identity	<p>This setting must match the "Remote Identity" on the remote VPN. Select the desired option, and enter the required data in the "Local Identity Data" field.</p> <ul style="list-style-type: none"> • WAN IP Address - This is the most common method. If selected, no input is required. • Fully Qualified Domain Name - enter the Domain Name assigned to this device. • Fully Qualified User name - This name does not have to a valid Internet Domain Name. E-mail addresses are often used for this entry. • DER ANS.1 DN - This must be a DER ANS.1 Domain Name.
Remote Identity	<p>This setting must match the "Local Identity" on the remote VPN. Select the desired option, and enter the required data in the "Remote Identity Data" field.</p> <ul style="list-style-type: none"> • IP Address - This is the most common method. If selected, no input is required. • Fully Qualified Domain Name - enter the Domain Name assigned to this device. • Fully Qualified User name - This name does not have to a valid Internet Domain Name. E-mail addresses are often used for this entry. • DER ANS.1 DN - This must be a DER ANS.1 Domain Name.
Authentication	<ul style="list-style-type: none"> • RSA Signature requires that both VPN endpoints have valid Certificates issued by a CA (Certification Authority). • For Pre-shared key, enter the same key value in both endpoints. The key should be at least 8 characters (maximum is 128 characters). Note that this key is used for the IKE SA only. The keys used for the IPsec SA are automatically generated.

Authentication Algorithm	Select the desired option, and ensure that both endpoints have the same settings.
Encryption Algorithm	<p>Select the desired method, and ensure the remote VPN endpoint uses the same method.</p> <ul style="list-style-type: none"> • The 3DES algorithm provides greater security than DES, but is slower. • If using AES, you must select the <i>Key Size</i>. If using DES or 3DES, this field is ignored.
IKE Exchange Mode	<p>Select the desired option, and ensure the remote VPN endpoint uses the same mode.</p> <ul style="list-style-type: none"> • <i>Main Mode</i> provides identity protection for the hosts initiating the IPsec session, but takes slightly longer to complete. • <i>Aggressive Mode</i> provides no identity protection, but is quicker.
Direction	<p>Select the desired option:</p> <ul style="list-style-type: none"> • Initiator - Only outgoing connections will be created. Incoming connection attempts will be rejected. • Responder - Only incoming connections will be accepted. Outgoing traffic which would otherwise result in a connection will be ignored. • Both Directions - Both incoming and outgoing connections are allowed.
IKE SA Life Time	This setting does not have to match the remote VPN endpoint; the shorter time will be used. Although measured in seconds, it is common to use time periods of several hours, such 28,800 seconds.
DH Group	Select the desired method, and ensure the remote VPN endpoint uses the same method. The smaller bit size is slightly faster.
IKE PFS	<p>If enabled, PFS (Perfect Forward Security) enhances security by changing the IPsec key at regular intervals, and ensuring that each key has no relationship to the previous key. Thus, breaking 1 key will not assist in breaking the next key.</p> <p>This setting should match the remote endpoint.</p>
IKE Keep Alive	

Click *Next* to see the following IKE Phase 2 screen.

IKE Phase 2 Screen

This screen sets the parameters for the IPsec SA. When using IKE, there are separate connections (SAs) for IKE and IPsec.

VPN Wizard - IKE Phase 2 (IPSec SA)

These settings must match the remote VPN Endpoint.

IPsec SA Life Time: 300 (secs)

☒ IPsec PFS

Key Group: Group 2 (1024 Bit)

☐ AH Authentication

Algorithm: MD5

☒ ESP Encryption

Algorithm: 3DES

Key Size: n/a (AES only)

☒ ESP Authentication

Algorithm: MD5

< Back Next > Cancel

Figure 50: VPN Wizard - IKE Phase 2 Screen

IKE Phase 2 (IPsec SA)	
IPsec SA Life Time	This setting does not have to match the remote VPN endpoint; the shorter time will be used. Although measured in seconds, it is common to use time periods of several hours, such 28,800 seconds.
IPsec PFS	If enabled, PFS (Perfect Forward Security) enhances security by changing the IPsec key at regular intervals, and ensuring that each key has no relationship to the previous key. Thus, breaking 1 key will not assist in breaking the next key.
AH Authentication	AH (Authentication Header) specifies the authentication protocol for the VPN header, if used. AH is often NOT used. If you do enable it, ensure the algorithm selected matches the other VPN endpoint.
ESP Encryption	ESP (Encapsulating Security Payload) provides security for the payload (data) sent through the VPN tunnel. Generally, you will want to enable both ESP Encryption and ESP Authentication. Select the desired method, and ensure the remote VPN endpoint uses the same method. <ul style="list-style-type: none"> The 3DES algorithm provides greater security than DES, but is slower. If using AES, you must select the <i>Key Size</i>. If using DES or 3DES, this field is ignored.
ESP Authentication	Generally, you should enable ESP Authentication. There is little difference between the available algorithms. Just ensure each endpoint use the same setting.

For IKE, configuration is now complete.

Click "Next" to view the final screen.



Figure 51: VPN Wizard - Final Screen

On the final screen, click "Finish" to save your settings, then "Close" to exit the Wizard.

VPN Examples

This section describes some examples of using the VPN Broadband Router in common VPN situations.

Example 1: Connecting 2 VPN Broadband Routers

In this example, 2 LANs are connected via VPN.

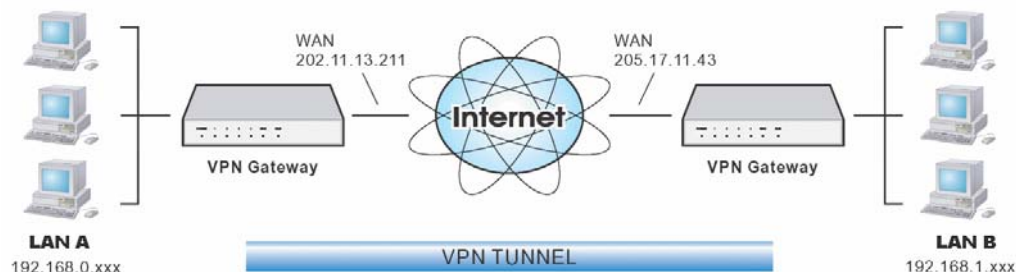


Figure 52: Connecting 2 VPN Broadband Routers

Note

- The LANs MUST use different IP address ranges.
- Both endpoints have fixed WAN (Internet) IP addresses.

Configuration Settings

Setting	LAN A Gate-way	LAN B Gate-way	Notes
Name	Policy 1	Policy 1	Name does not affect operation. Select a meaningful name.
Remote Endpoint	205.17.11.43	202.11.13.211	Other endpoint's WAN (Internet) IP address.
Local IP addresses	Any	Any	Use a more restrictive definition if possible.
Remote IP addresses	192.168.1.1 to 192.168.1.254	192.168.0.1 to 192.168.0.254	Address range on other endpoint. Use a more restrictive definition if possible.
Key Exchange	IKE	IKE	Must match
IKE SA Parameters			
IKE Direction	Both ways	Both ways	Does not have to match. Either endpoint can block 1 direction.
Local Identity	IP address	IP address	IP address is the most common ID method
Remote Identity	IP address	IP address	IP address is the most common ID method
IKE Authentication method	Pre-shared Key	Pre-shared Key	Certificates are not widely used.
Pre-shared Key	Xxxxxxxxxx	Xxxxxxxxxx	Must match
IKE Authentication algorithm	MD5	MD5	Must match
IKE Encryption	DES	DES	Must match

IKE Exchange mode	Main Mode	Main Mode	Must match
DH Group	Group 1 (768 bit)	Group 1 (768 bit)	Must match
IKE SA Life time	28800	28800	Does not have to match. Shorter period will be used.
IKE PFS	Disable	Disable	Must match
IPSec SA Parameters			
IPSec SA Life time	28800	28800	Does not have to match. Shorter period will be used.
IPSec PFS	Disabled	Disabled	Must match
AH authentication	Disabled	Disabled	AH is rarely used
ESP authentication	Enable/MD5	Enable/MD5	Must match
ESP encryption	Enable/DES	Enable/DES	Must match

Example 2: Windows 2000/XP Client to LAN

In this example, a Windows 2000/XP client connects to the VPN Broadband Router and gains access to the local LAN.

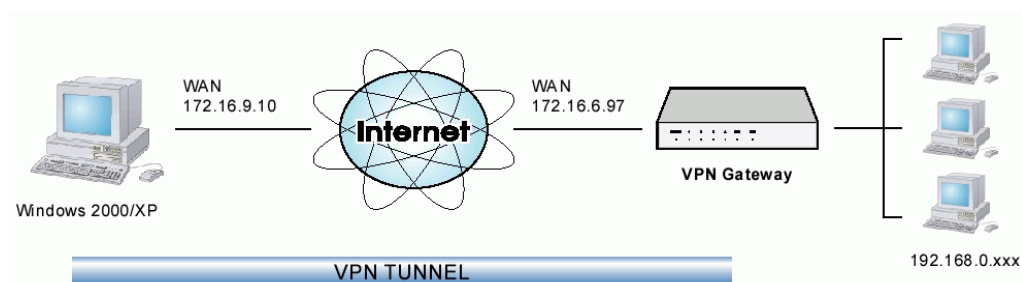


Figure 53: Windows 2000/XP Client to VPN Broadband Router



To use 3DES encryption on Windows 2000, you need Service Pack 3 or later installed.

VPN Broadband Router Configuration

Setting	Value	Notes
Name	Win Client	Name does not affect operation. Select a meaningful name.
Remote Endpoint	172.16.9.10	Other endpoint's WAN (Internet) IP address.
Local IP addresses	Subnet address: 192.168.0.0 255.255.255.0	Allows access to entire LAN. Use a more restrictive definition if possible.
Remote IP addresses	172.16.9.10	For a single client, this address is the same as the endpoint address.
Key Exchange	IKE	Must match client PC
IKE SA Parameters		
IKE Direction	Both ways	Using "Responder only" is not possible.
Local Identity	IP address	Required.
Remote Identity	IP address	Required
IKE Authentication method	Pre-shared Key	Certificates are not widely used.
Pre-shared Key	Xxxxxxxxxx	Must match client PC
IKE Authentication algorithm	SHA-1	Must match client PC
IKE Encryption	3DES	Must match client PC
IKE Exchange mode	Main Mode	Windows 2000 only supports Main Mode.
DH Group	Group 1 (768 bit)	Must match client PC
IKE SA Life time	28800	Does not have to match client PC. Shorter period will be used.
IKE PFS	Disable	Must match client PC
IPSec SA Parameters		

IPSec SA Life time	28800	Do not have to match. Shorter period will be used.
IPSec PFS	Disable	Must match client PC
AH authentication	Disabled	AH is rarely used
ESP authentication	Enable/MD5	Must match client PC
ESP encryption	Enable/DES	Must match client PC

Windows Client Configuration

1. Select *Start - Programs - Administrative Tools - Local Security Policy*.
2. Right click *IP Security Policy on Local Machine* and select *Create IP Security Policy*

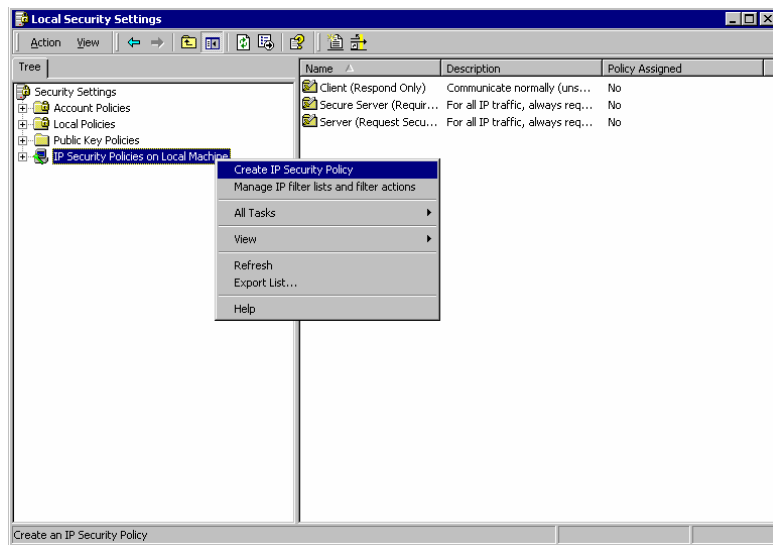


Figure 54: Windows 2000/XP - Local Security Settings

3. Click "Next", then enter a policy name, for example "DUT To Win2K", then click "Next".
4. Step through the Wizard:
 - Deselect *Activate the default response rule*. Click "Next",
 - Leave *Edit Properties* checked. Click "Finish".
5. The following "Properties - Rules" screen will be displayed.

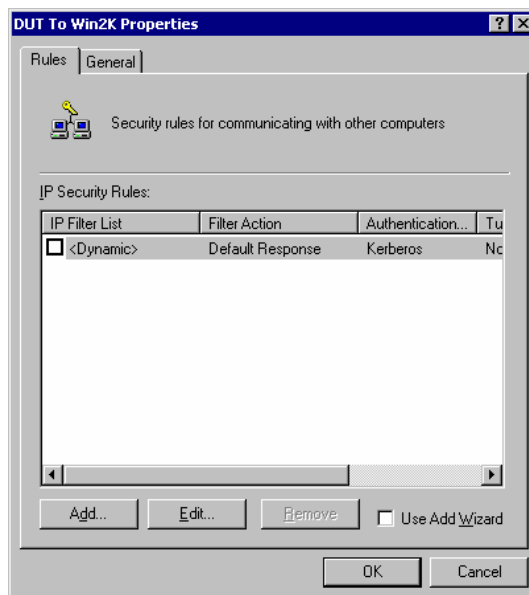


Figure 55: Windows 2000/XP - Policy Properties

- Note that no rules are in use. Two (2) rules are required - incoming and outgoing.
 - The outgoing rule will be added first.
6. Deselect the "Use Add Wizard" checkbox, then click "Add" to view the screen below.

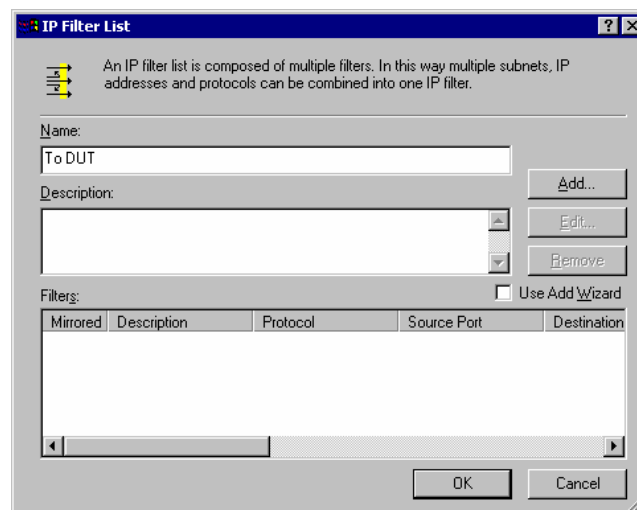


Figure 56: IP Filter List

7. Type "To DUT" for the name, then click "Add" to see a screen like the following.

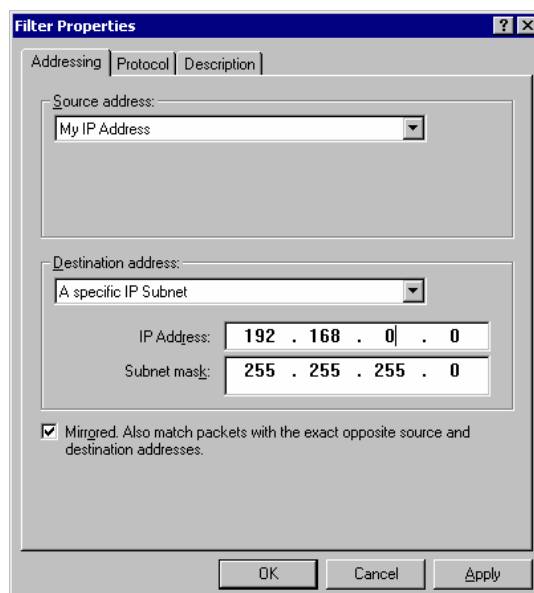


Figure 57: Filter Properties: Addressing

8. Enter the *Source IP address* and the *Destination IP address*.
 - Since this is the outgoing filter, the *Source IP address* is "My IP address" and the *Destination IP address* is the address range used on the remote LAN.
 - Ensure the *Mirrored* option is checked.
9. Click "OK" to save your settings and close this dialog.

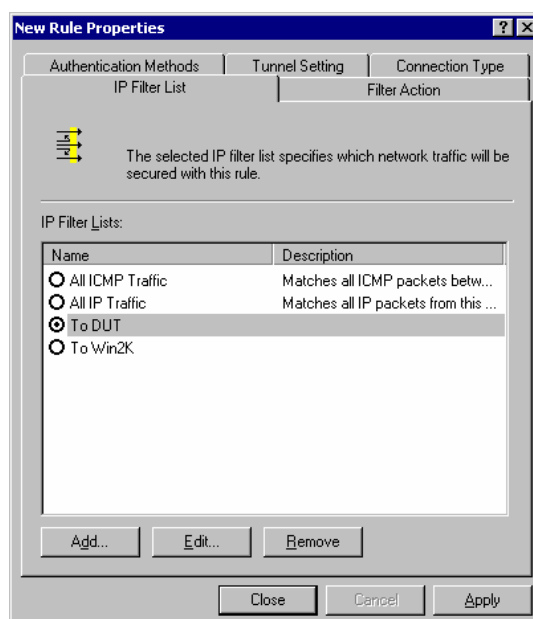


Figure 58: New Rule Properties: IP Filter List

10. On the resulting screen (above), ensure the "To DUT" filter is selected, then click the *Filter Action* tab to see a screen like the following

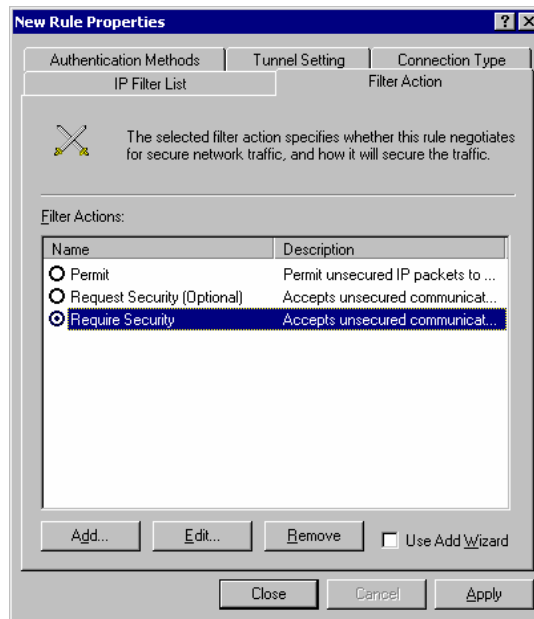


Figure 59: New Rule Properties: Filter Action

11. Select *Require Security*, then click the "Edit" button, to view the *Require Security Properties* screen.

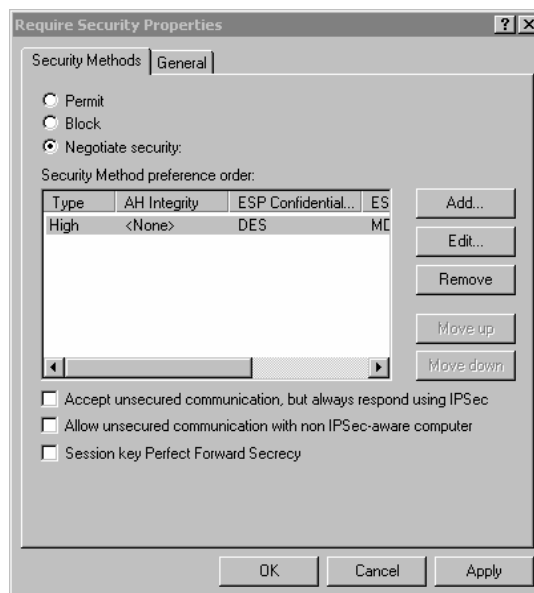


Figure 60: Require Security Properties

12. Select *Negotiate security* (this selects IKE), then click "Add".

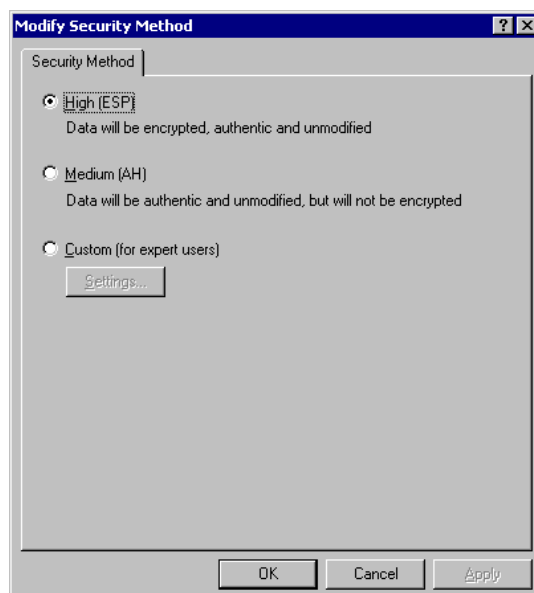


Figure 61: Modify Security Method

13. On the resulting screen (above), select *High [ESP]* then click "OK" to save your changes and return to the *Require Security Properties* screen.

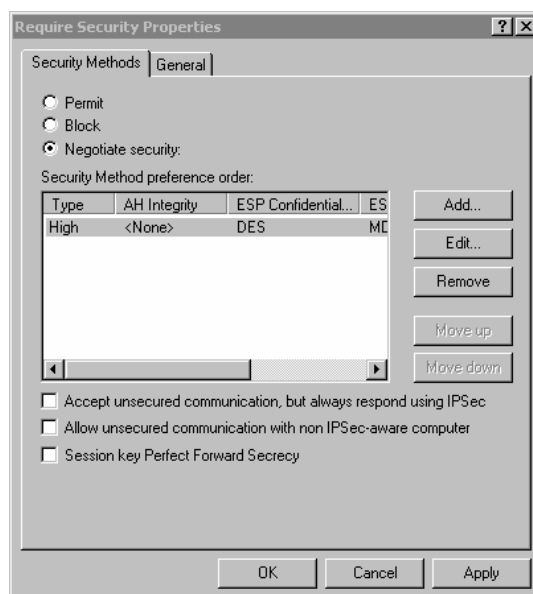


Figure 62: Require Security Properties

14. Ensure the following settings are correct, then click "OK" to return to the *Filter Action* tab of the *Edit Rule Properties* screen.

VPN Setting	Windows Setting
IKE enabled	Negotiate security
AH disabled	AH Integrity: <None>
ESP encryption: Enable/DES	ESP Confidentiality: DES
ESP authentication: Enable/MD5	ESP Integrity: MD5

15. Click the *Tunnel Setting* tab, then select *The tunnel endpoint is specified by this IP address*. Enter the WAN (Internet) IP address of the VPN Broadband Router, as shown below.

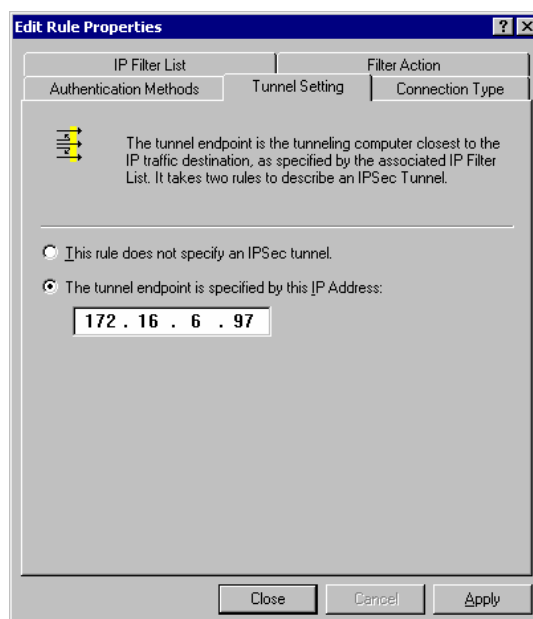


Figure 63: Tunnel Setting

16. Click the *Authentication Methods* tab, then click the "Edit" to see the screen like the example below.



Figure 64: Authentication Method

17. Select *Use this string to protect the key exchange (preshared key)*, then enter your preshared key in the field provided.
18. Click "OK" to save your changes and return to the *Authentication Methods* tab of the *Edit Rule Properties* screen.
19. Click "Close" to return to the *DUT to Win2K properties* screen. The "To DUT" filter should now be listed, as shown below.

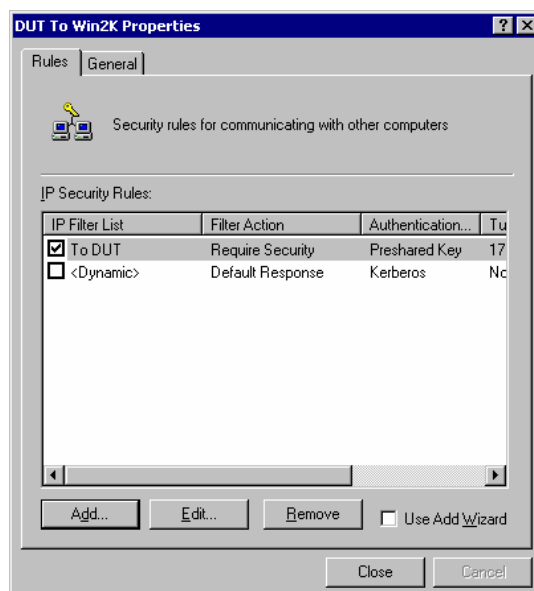


Figure 65: Windows 2000/XP Client to VPN Broadband Router

20. To add the second (incoming) rule, click "Add". For the name, enter "To Win2K", then click "Add".

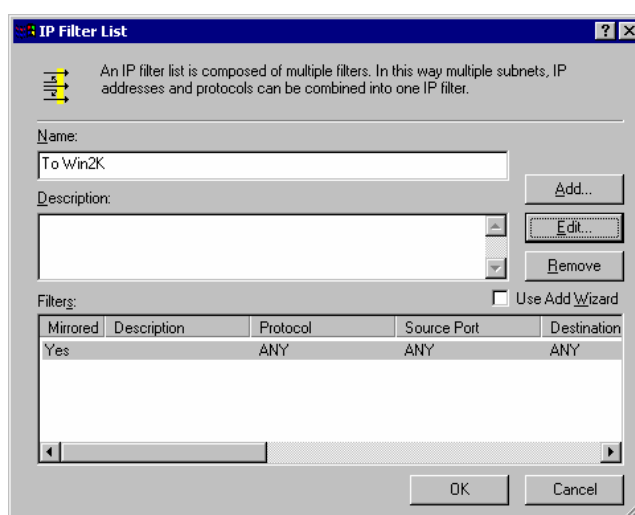


Figure 66: Windows 2000/XP Client to VPN Broadband Router

21. Enter the *Source IP address* and the *Destination IP address* as shown below.

- Since this is the incoming filter, the *Source IP address* is the address range used on the remote LAN and the *Destination IP address* is "My IP address".
- Ensure the *Mirrored* option is checked.

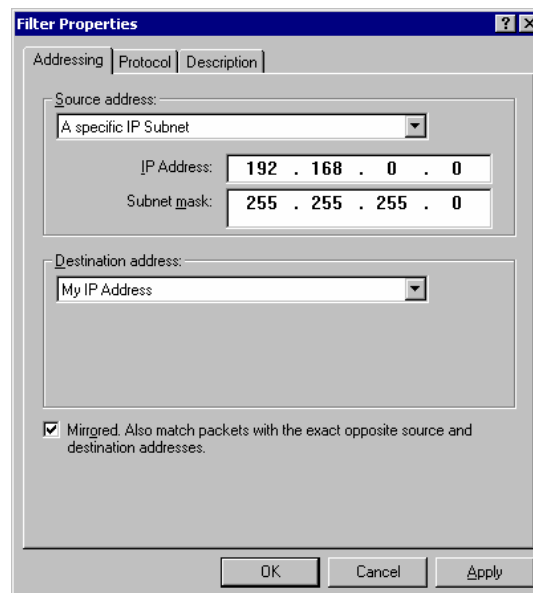


Figure 67: Filter Properties: Addressing

22. Click "OK" to save your changes, then "Close".

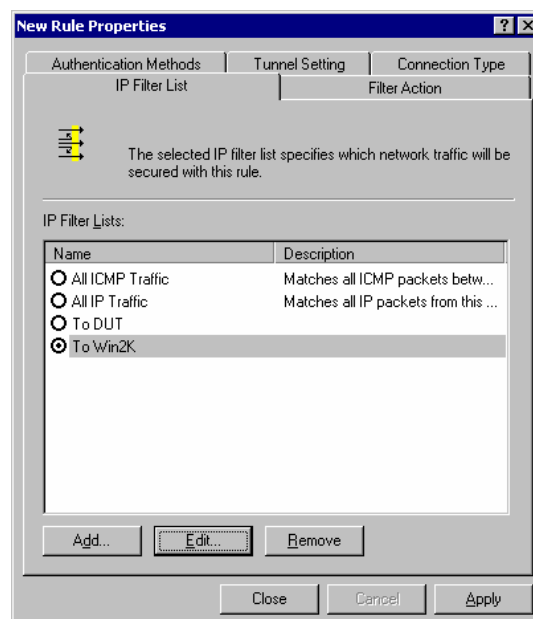


Figure 68: Filter List

23. Ensure the "To Win2K" filter is selected, then click the *Filter Action* tab.

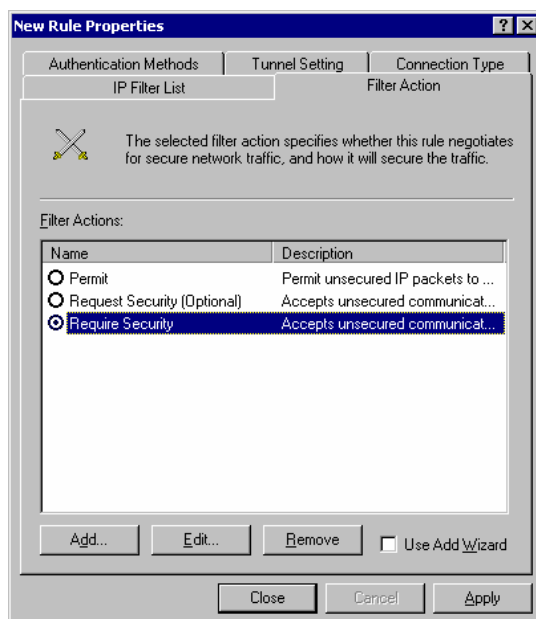


Figure 69: Filter Action

24. Select *Require Security*, then click "Edit". On the *Require Security Methods* screen below, select *Negotiate security*.

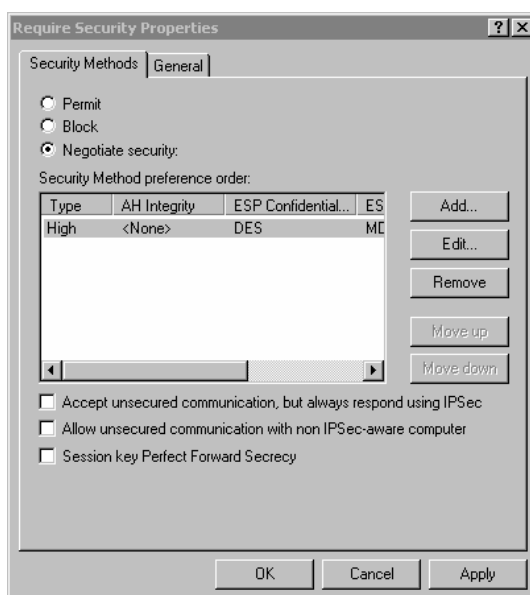


Figure 70: Security Methods

25. Click the "Add" button. On the resulting *Modify Security Method* screen below, select *High [ESP]*.

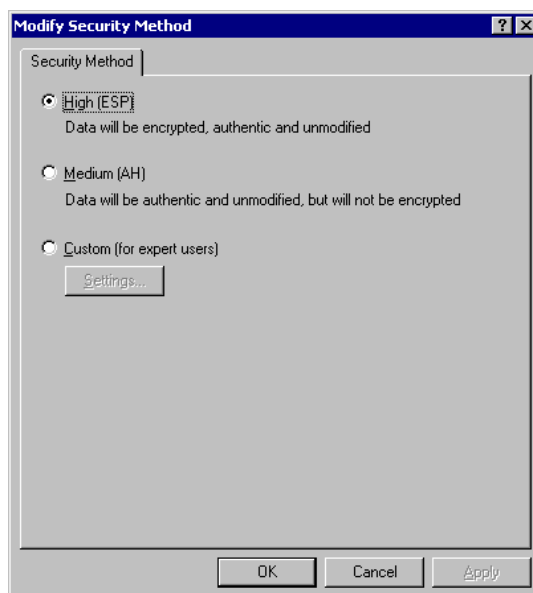


Figure 71: Modify Security Method

26. Click "OK" to save your changes, then click "OK" again to return to the Filter Action screen.

27. Select the *Tunnel Setting* tab, and enter the WAN (Internet) IP address of this PC (172.16.9.10 in this example).

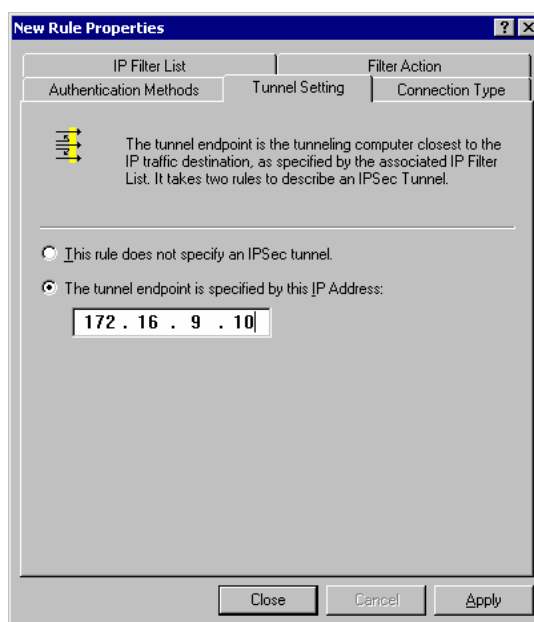


Figure 72: Tunnel Setting

28. Select the *Authentication Methods* tab, and click the "Edit" button to see the screen below.

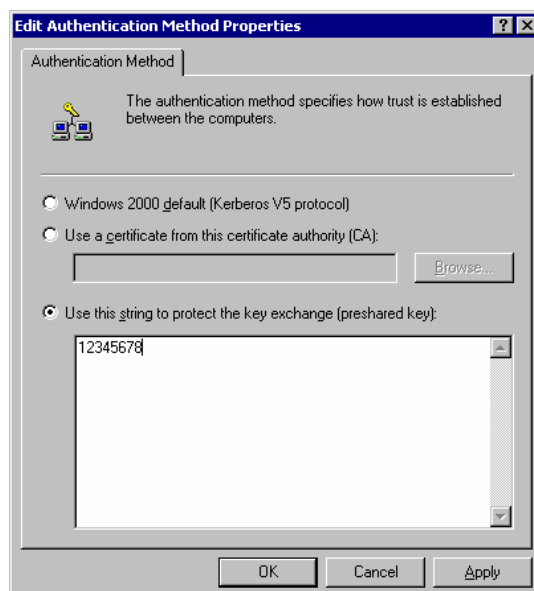


Figure 73: Authentication Method

29. Select *Use this string to protect the key exchange (preshared key)*, then enter your preshared key in the field provided.
30. Click "OK" to save your settings, then "Close" to return to the *DUT to Win2K Properties* screen. There should now be 2 IP Filers listed, as shown below.

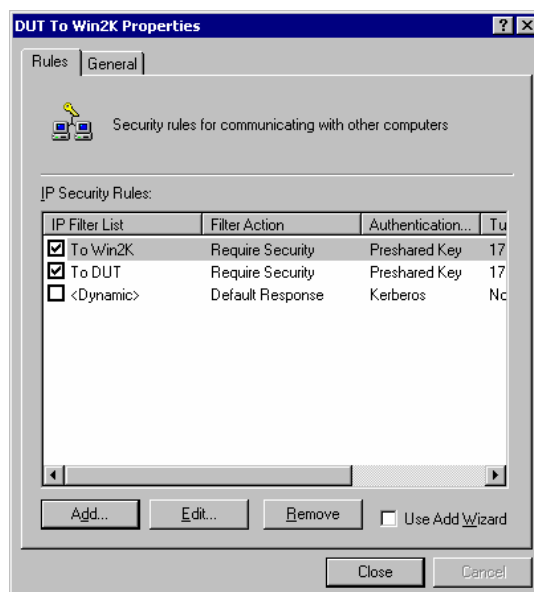


Figure 74: DUT to Win2K Properties

31. Select the *General* tab.

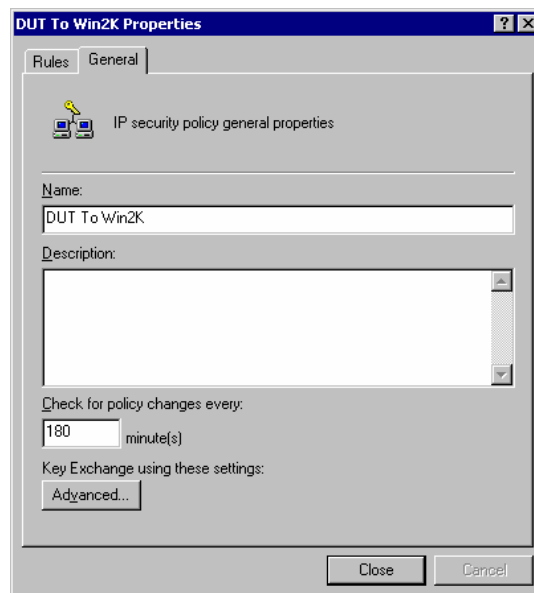


Figure 75: Properties - General Tab

32. Click the "Advanced" button to see the screen below.

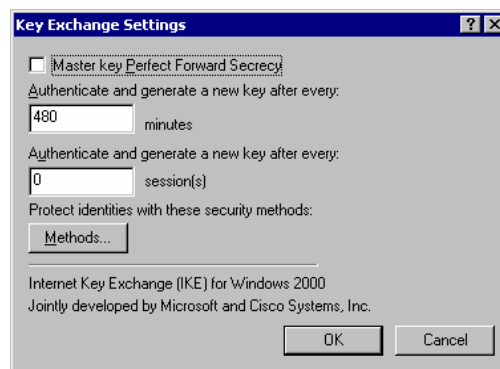


Figure 76: Key Exchange Settings

33. Click the "Methods" button to see the screen below.

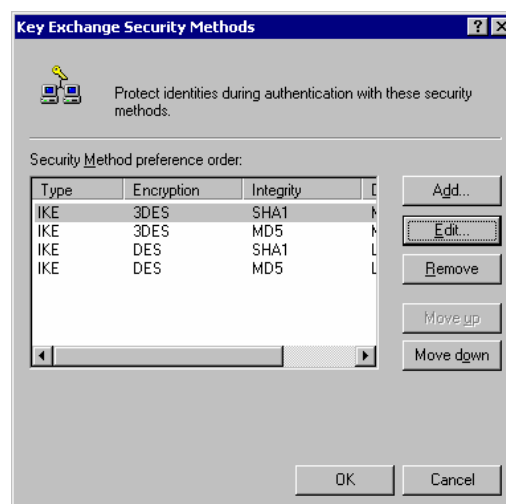


Figure 77: Key Exchange Security Methods

34. Select the first entry, and click the "Edit" button to see the following screen.

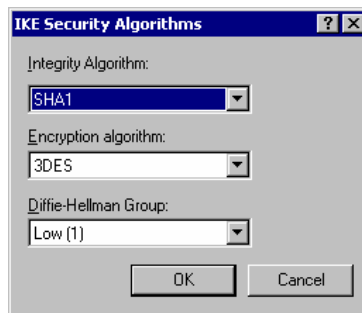


Figure 78: IKE Security Algorithms

35. Select "SHA1" for *Integrity Algorithm*, "3DES" for *Encryption algorithm*, and "Low(1)" for the *Diffie-Hellman Group*.
 36. Click "OK" to save, then "OK" again, and then "Close" to return to the *Local Security Settings* screen.
 37. Right click the *DUT to Win2K Policy* and select "Assign" to make your policy active.

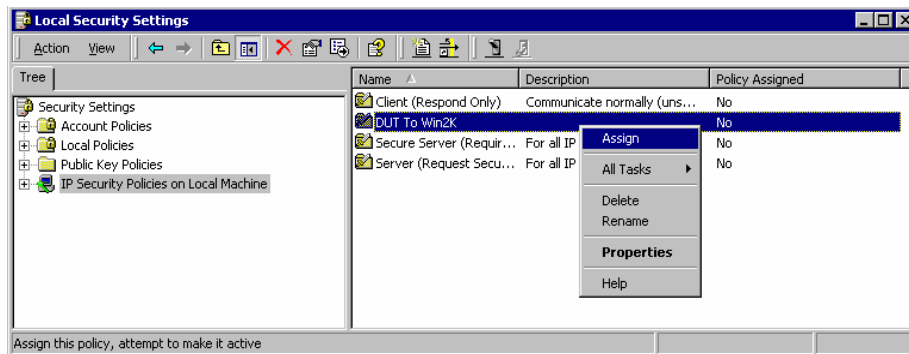


Figure 79: Windows 2000/XP Client to VPN Broadband Router

Configuration is now complete.

Example 3: Windows 2000 Server to VPN Gateway

In this example, a Windows 2000 Server connects to the VPN Broadband Router. Users on each LAN can then gain access to the remote LAN.

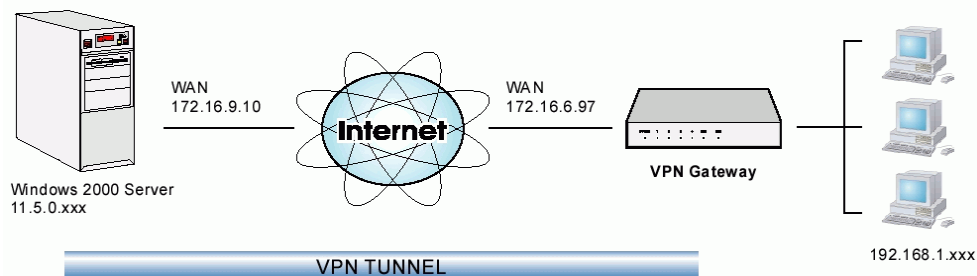


Figure 80: VPN Broadband Router to Windows 2000 Server

VPN Broadband Router Configuration

This is the same as for the client setup earlier, with the exception of the IP address range for the remote endpoint.

Setting	Single Client	Server/Gateway
Remote IP addresses	172.16.9.10 For a single client, this is the same as the Gateway address	Subnet address: 11.5.0.0 255.255.0.0 Address range used on the remote LAN.

Windows 2000 Server Configuration

Configuration is the same as for *Example 2: Windows 2000/XP Client to* except for specifying the *Source* and *Destination* addresses for the "Filter Properties". Instead, for both IP Filters, the *Filter Properties- Addressing* should be completed as follows.

The screenshot shows the 'Filter Properties' dialog box with the 'Addressing' tab selected. It contains two main sections: 'Source address' and 'Destination address'. Each section has a dropdown menu set to 'A specific IP Subnet', followed by fields for 'IP Address' and 'Subnet mask'. The 'Source' IP is 192.168.0.0 with mask 255.255.255.0. The 'Destination' IP is 11.0.0.0 with mask 255.0.0.0. A 'Mirrored' checkbox is checked at the bottom.

Source address:	
IP Address:	192 . 168 . 0 . 0
Subnet mask:	255 . 255 . 255 . 0

Destination address:	
IP Address:	11 . 0 . 0 . 0
Subnet mask:	255 . 0 . 0 . 0

☒ Mirrored. Also match packets with the exact opposite source and destination addresses.

Figure 81: Windows 2000 Server – Addressing

- The *Source Address* should be set to "A specific IP Subnet", and the *IP address* and *Subnet mask* set to the address range used on the VPN Broadband Router's LAN.
- The *Destination Address* should be set to "A specific IP Subnet", and the *IP address* and *Subnet mask* set to the address range used on the Windows 2000 LAN.

Certificates

Certificates are used to authenticate users. Certificates are issued to you by various CAs (Certification Authorities). These Certificates are called "Self Certificates".

Each CA also issues a certificate to itself. This Certificate is required in order to validate communication with the CA. These certificates are called "Trusted Certificates".

The **Certificates** screen lists either the **Trusted Certificates** - the certificates of each CA itself - or **Self Certificates** - the certificates issued to you.

Use the radio button in the **Type** section of the screen to choose which type of Certificate you wish to view.

Trusted Certificates

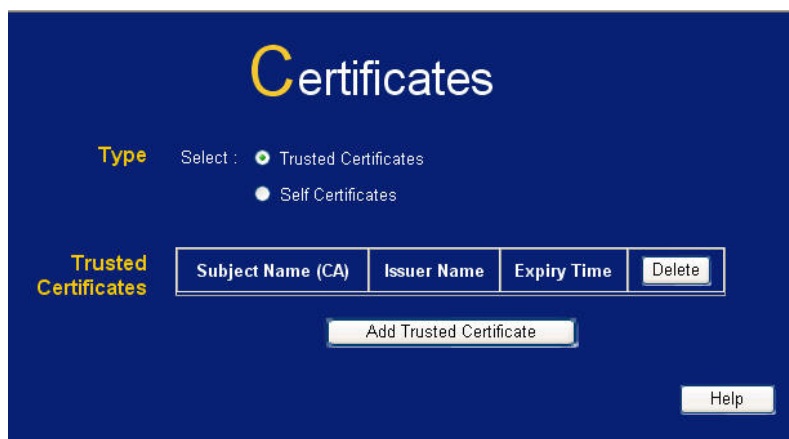


Figure 82: Trusted Certificates Screen

Data – Trusted Certificates Screen

Trusted Certificates	
Subject Name (CA)	The "Subject Name" is always the company or person to whom the Certificate is issued. For trusted certificates, this will be a CA.
Issuer Name	The CA (Certification Authority) which issued the Certificate.
Expiry Time	The date on which the Certificate expires. You should renew the Certificate before it expires.
Delete button	Use this button to delete a Trusted Certificate. Select the checkbox in the <i>Delete</i> column for any Certificates you wish to delete, then click the "Delete" button.
Add Trusted Certificate button	Use this to add a new Trusted Certificate to the table. See below for details.

Requesting a Trusted Certificate

1. After obtaining a new Certificate from the CA, you need to upload it to the VPN Broadband Router.
2. On the "Certificates" screen, click the "Add Trusted Certificate" button to view the **Add Trusted Certificate** screen, shown below.

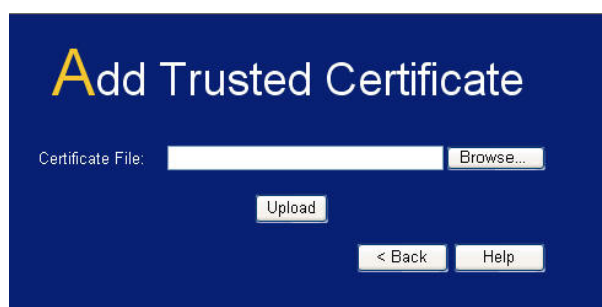


Figure 83: Add Trusted Certificate

3. Click the "Browse" button, and locate the certificate file on your PC
4. Select the file. The name will appear in the "Certificate File" field.
5. Click "Upload" to upload the certificate file to the VPN Broadband Router.
6. Click "Back" to return to the Trusted Certificate list. The new Certificate will appear in the list.

Self Certificates

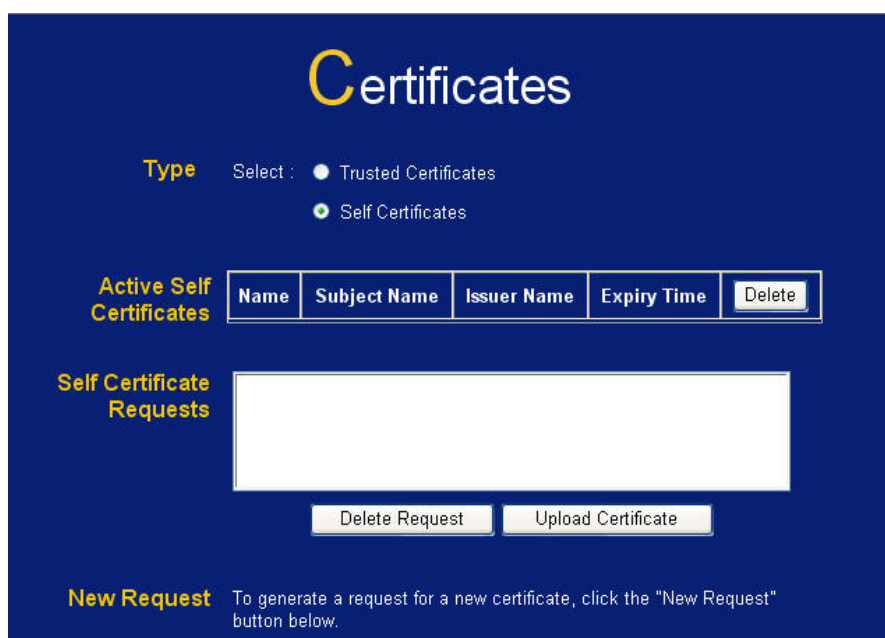


Figure 84: Self Certificates Screen

Data – Self Certificates Screen

Active Self Certificates	
Name	The name you assigned to this Certificate. You should select a name which helps to identify this particular certificate.
Subject Name	The company or person to whom the Certificate is issued.
Issuer Name	The CA (Certification Authority) which issued the Certificate.
Expiry Time	The date on which the Certificate expires. You should renew the Certificate before it expires.
Delete button	Use this button to delete a Self Certificate. Select the checkbox in the <i>Delete</i> column for any Certificates you wish to delete, then click the "Delete" button.

Self Certificate Requests	
Request List	Any current requests are listed. These requests are generated by using the <i>New Request</i> button described below. <ul style="list-style-type: none"> After you have received the Certificate file for a request, you must select the request in the list, and upload the certificate file. The request will then be deleted from this list, and the Certificate will appear in the <i>Active Self Certificates</i> table. If for some reason you never obtain the Certificate, you can manually delete the request by using the <i>Delete Request</i> button.
Delete Request Button	Use this to delete the selected certificate request.
Upload Certificate	After you have received a Certificate, use this to upload the certificate to the Broadband VPN Router. You must select the correct certificate request, so the Broadband VPN Router can correctly match the request and the certificate.
New Request Button	Use this to generate a new request to be supplied to a CA (Certification Authority). See the following section for details.

Requesting a Self Certificate

The VPN Broadband Router must generate a request for the CA. This request must then be supplied to the CA. The procedure is as follows:

- On the *Self Certificates* screen, click the *New Request* button to view the first screen of the ***Self Certificate Request*** procedure, shown below.

Self Certificate Request (1)

Name:

Subject:

Hash Algorithm: MD5

Signature Algorithm: RSA

Signature Key Length: 512

IP Address: 61.217.203.55

Domain Name: (Optional)

E-mail Address: (Optional)

< Back Next >

Figure 85: Self Certificate Request (1)

2. Complete this screen.

Name	Enter a name which helps to identify this particular certificate. This name is only for your reference, it is not visible to other people.
Subject Name	This is the name which other organizations will see as the Holder (owner) of this Certificate. This should be your registered business name or official company name. Generally, all Certificates should have the same value in the Subject field.
Hash Algorithm	Select the desired option.
Signature Algorithm	Select the desired option. RSA is recommended.
Signature Key Length	Select the desired option. Normally, 1024 bits provides adequate security.
IP address	Enter your public (Internet) IP address.
Domain Name	This is optional. If you have a domain name, enter it here.
E-mail Address	This is optional. If you have permanent E-mail address, enter it here.

3. Click "Next" to continue to the following screen.

Self Certificate Request (2)

Certificate Details

Subject Name: test
Hash Algorithm: MD5
Signature Algorithm: RSA
Key Length: 512

Data to supply to CA

```

-----BEGIN CERTIFICATE REQUEST-----
MIHrMIGWAgECMA8xDTALBgNVBAMTBHRlc3QwXDANBgkqhkiG9wOBAQEFAANLADBI
AkEAsOzGEBn9ltgFK1BfxFhvRJCf3RPOAntSmyiYTFpCjYafuoxsoF4H+JTsYnb
OaxTnuG9H1VVDE1/GxOqpWkYEQIDAQABOCiWIAyJKoZIhvcNAQkOMRMwETAPBgNV
HREECDAghwQ92cs3MAOGCSqGSIb3DQEBAUAAOEAlLRyq5ZK6V+Q2ZUNus1OEDcv
RodL6dXjJ1GYok6wuDnTPESJS3m9RRcv/601gZFYeZ5Bjf7LFpnEPDeGJEGAJA==
-----END CERTIFICATE REQUEST-----

```

Copy/Save this data as necessary, then click "Finish".

< Back Finish

Figure 86: Self Certificate Request (2)

- Check that the data displayed in the *Certificate Details* section is correct. This data is used to generate the Certificate request. If the data is not correct, click the "Back" button and correct the previous screen.
- If the data is correct, copy the text in the *Data to supply to CA* panel (including "-----BEGIN CERTIFICATE REQUEST-----" and "-----END CERTIFICATE REQUEST-----") to a new document in a text editor such as Notepad, and save the file.
- Click *Finish* to return to the *Self Certificates* screen.
Your request will be listed under *Self Certificate Requests*.

7. Apply for a Certificate:
 - Connect to the CA's web site.
 - Start the Self Certificate request procedure.
 - When prompted for the request data, supply the data you copied and saved in step 5 above.
 - Submit the CA's form.
 - If there are no problems, the Certificate will then be issued.
8. After obtaining a new Certificate, as described above, you need to upload it the VPN Broadband Router.
 - Return to the **Self Certificates** screen.
 - In the *Self Certificate Requests* list, select the request matching this certificate.
 - Click the *Upload Certificate* button.

You will see a screen like the one below.

Figure 87: Upload Self Certificate

9. Upload the Certificate:
 - Click the *Browse* button, and locate the certificate file on your PC
 - Select the file. The name will appear in the *Certificate File* field.
 - Click the *Upload* button to upload the certificate file to the VPN Broadband Router.
 - Click *Back* to return to the **Self Certificates** screen.. The new Certificate will appear in the *Active Self Certificates* list.

CRLs

CRLs are only necessary if using Certificates.

CRL (Certificate Revocation List) files show Certificates which have been revoked, and are no longer valid. Each CA issues their own CRLs.

It is VERY IMPORTANT to keep your CRLs up-to-date. You need to obtain the CRL for each CA regularly. The "Next Update" field in the CRL shows when the next update will be available.

To add a New CRL

1. Obtain the CRL file from your CA.
2. Select *CRL* from the VPN menu. You will see a screen like the example below.

Figure 88: Certificate Revocation Lists

3. Click the "Add New CRL" button. You will see a screen like the following:



Figure 89: Upload CRL

4. Upload the CRL file:
 - Click the "Browse" button, and locate the CRL file on your PC
 - Select the file. The name will appear in the "File to Upload" field.
 - Click "Upload" to upload the CRL file to the VPN Broadband Router.
 - Click "Back" to return to the CRL list. The new CRL will appear in the list.
5. Use the "Delete" button to delete the previous (now outdated) CRL.

Status

This screen lists all VPN SAs (Security Association) which exist at the current time.

- If no VPN tunnels exist at the current time, the table will be empty.
- To update the display, click the "Refresh" button.
- If using IKE, there is one SA for the IKE connection, and another SA for the IPSec connection.
- For each VPN SA the following data is displayed.

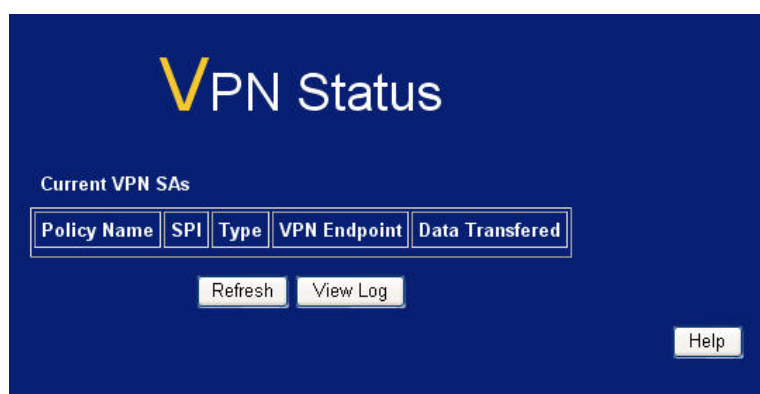


Figure 90: VPN Status Screen

Data – VPN Status Screen

VPN Status	
SPI	Each SA (Security Association) has a unique SPI. For manual keys, this SPI is specified by user input. If using IKE, the SPI is generated by the IKE negotiation process.
SA Type	Each SAs (Security Association) will be either IKE or IPSec.
Policy Name	The name of the VPN Policy which triggered this VPN connection.
VPN Endpoint	The IP address of the remote VPN Endpoint.
Data Tx	Measures the quantity of data which has been sent (Transmitted) via this SA.

Data Rx	Measures the quantity of data which has been received via this SA.
Buttons	
Refresh	Update the data shown on screen.
View Log	Open a new window and view the contents of the VPN log.

Chapter 9

Microsoft VPN

9

This Chapter explains the screens and settings available for the Microsoft VPN function.

Overview

Microsoft VPN uses the *Microsoft VPN Adapter* which is provided in recent versions of Windows. This feature can be used to provide remote access to your LAN by individual PCs. This method provides an alternative to using IPSec VPN, which is described in the previous chapter. Using Microsoft VPN provides easier setup than using IPSec VPN.

The following Microsoft VPN configuration screens are provided.

- Server
- Clients
- Status

Server Setup

The VPN Broadband Router incorporates a PPTP (Peer-to-Peer Tunneling Protocol) server which is compatible with the "VPN Adapter" provided with recent versions of Microsoft Windows. Remote Windows clients are able to connect to this Server. Once connected, they can access the LAN as if they connected locally.

The **Server** setup screen is accessed by selecting the *Server* option on the *Microsoft VPN* menu.



Figure 91: Microsoft VPN Screen

Data – Microsoft VPN Screen

PPTP Server	
Enable	Use this checkbox to enable or disable this feature as required. To allow connection by remote Windows clients, you must enable this feature, and enter the client details (on the <i>Clients</i> screen) to allow them to login to this Server.
Authentication Methods	Enable the desired authentication methods. The methods are listed with the most secure first, least secure last. If multiple methods are checked, the most secure will be tried first. If the remote client does not support this, then the other checked methods are tried in order. You must enable at least one method.

Client Database

To login to the PPTP Server (above) using the Microsoft Windows VPN Adapter, remote users must be entered in the VPN client database.

The **Client** setup screen is accessed by selecting the *Client* option on the *Microsoft VPN* menu.

Figure 92: Microsoft VPN Client Database Screen

Data - Microsoft VPN Client Database Screen

Existing Users	
User List	All existing users are listed. If you have not added any users, this list will be empty. When a user is selected, their details are displayed in the <i>Properties</i> panel. You can then edit the user's information as required; click <i>Update Selected User</i> to save your changes. (If you select another user before saving your changes, your changes are lost.)
Delete Button	Use this to delete the selected user if required.

Properties	
Allow connection	Use this to enable or disable access by this user, as required.
Login Name	Enter the login name. The remote user must provide this name when they connect. The name must not contain spaces, punctuation, or special characters.
Login Password	Enter the login password. The remote user must provide this password when they connect.
Verify Password	Re-enter the password above.
Button	
Clear Form	Use this to prepare the form for a new entry. Any existing data will be cleared.
Add as New User	Use this to save the data in the "Properties" area as a new entry. (If a user is selected in the "Existing User" list, the selection is ignored.)
Update Selected User	<p>Use this to update the data for the user selected in the <i>Existing User</i> list. To change an existing user's data, follow this procedure.</p> <ol style="list-style-type: none"> 1. Select the desired user in the <i>Existing Users</i> list. Their information will be displayed in the <i>Properties</i> panel. 2. Change the data in the <i>Properties</i> panel as required. 3. Click the <i>Update Selected User</i> button to save your changes.

Status Screen

The **Status** screen is accessed by selecting the *Status* option on the *Microsoft VPN* menu.

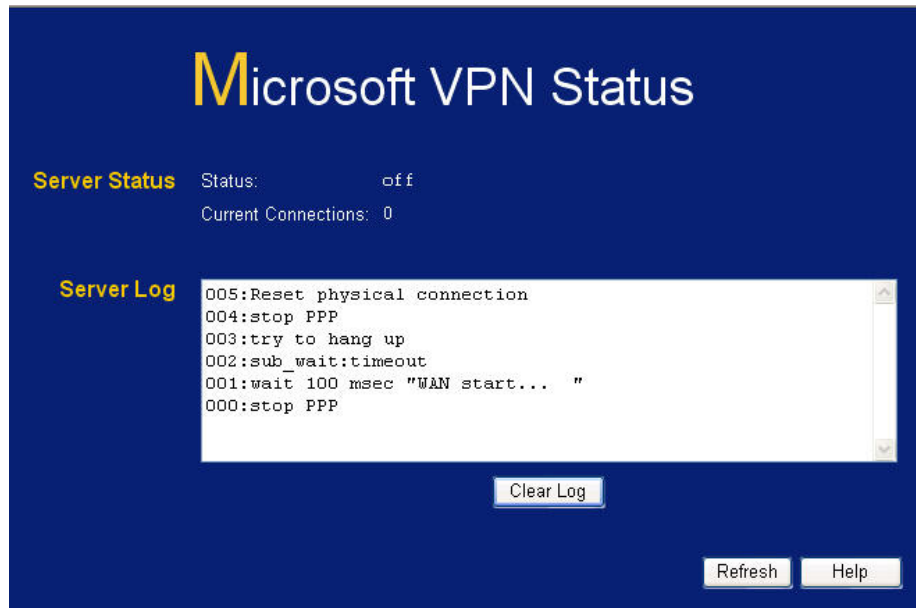


Figure 93: Microsoft VPN Status Screen

Data - Microsoft VPN Status Screen

Server Status	
Status	This indicates whether or not the PPTP (VPN) Server is enabled.
Current Connections	This indicates the number of remote clients currently logged into the PPTP (VPN) Server.
Server Log	
Server Log	This displays details of each connection or connection attempt. You can use the <i>Clear Log</i> button to re-start the log, making new messages easier to read.

Windows Client Setup

To connect to the PPTP (VPN) Server in the VPN Broadband Gateway:

- The Microsoft VPN feature in the VPN Broadband Gateway must be enabled and configured, as described in the previous section.
- Each user must have a login (username and password) on the VPN client database on the VPN Broadband Gateway.
- The remote client PC must be configured as described in the following sections.
- It is assumed that remote users have a Broadband (not dial-up) connection to the Internet.

Windows 98/ME

1. Click *Start - Settings - Dial-up Networking*
2. Select *Make New Connection*

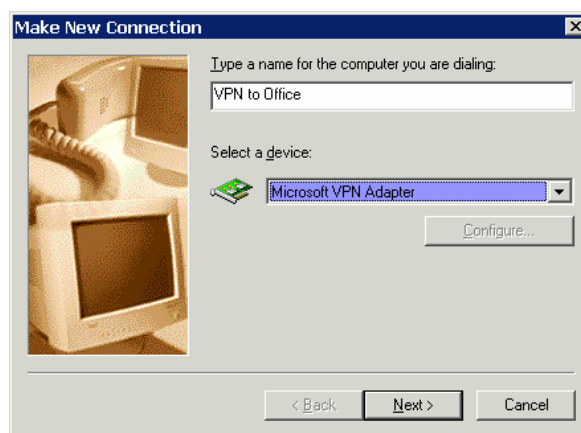


Figure 94: Windows ME VPN Adapter

3. Type a name for this connection, and ensure that "Microsoft VPN Adapter" is selected. Click "Next" to continue.

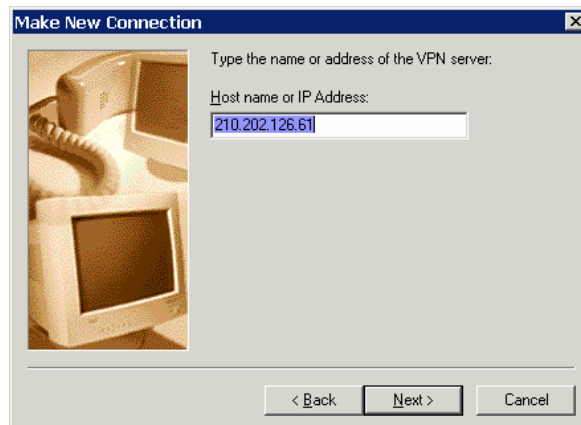
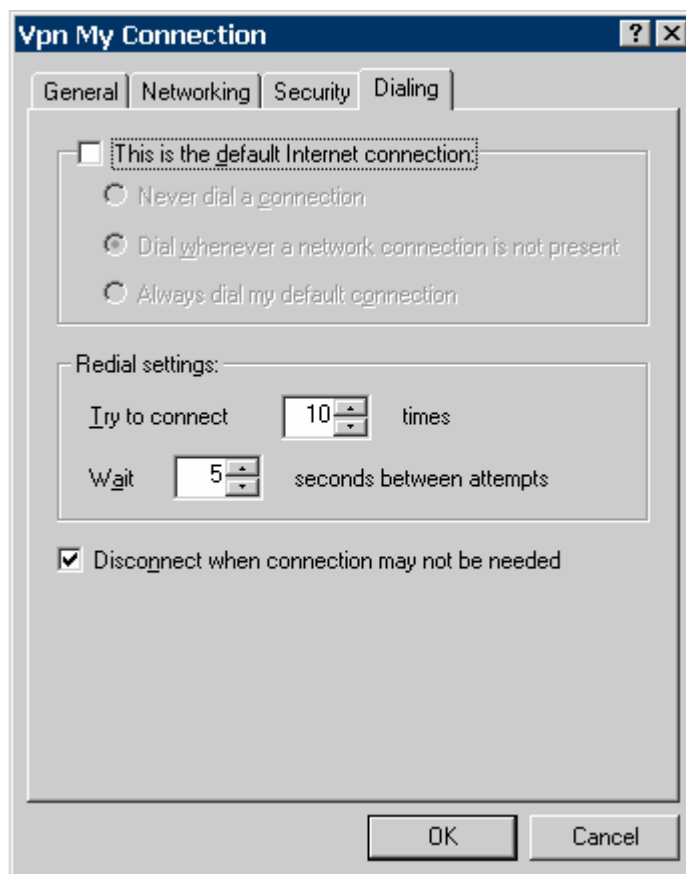


Figure 95: Windows ME VPN Remote Host

4. Enter the Internet IP address or domain name of this device. (If you don't have a fixed IP address, you can use a Dynamic DNS service to obtain a domain name.) Click "Next" to continue.
5. Click "Finish" to exit the Wizard. The new entry will now be listed in "Dial-up Networking".

If necessary, you can change the settings for this connection by right-clicking on it, and selecting **Properties**.

To force all outgoing traffic to be sent via VPN, enable the setting *This is the default Internet connection* on the *Dialing* tab. (Do NOT enable this setting if using Dial-up or PPPoE client software.)



Windows ME VPN Dialing Properties

To establish a connection:

1. Ensure you are connected to the Internet.
2. Select *Start - Settings - Dial-up Networking*
3. Double-click the new VPN entry in *Dial-up Networking*.
4. Enter your User name and Password, as recorded in the Client database on the VPN Broadband Router.
5. Click the "Connect" button.

Windows 2000

Ensure you have logged on with Administrator rights before attempting this procedure.

1. Open "Network Connections", and start the "New Connection" Wizard.

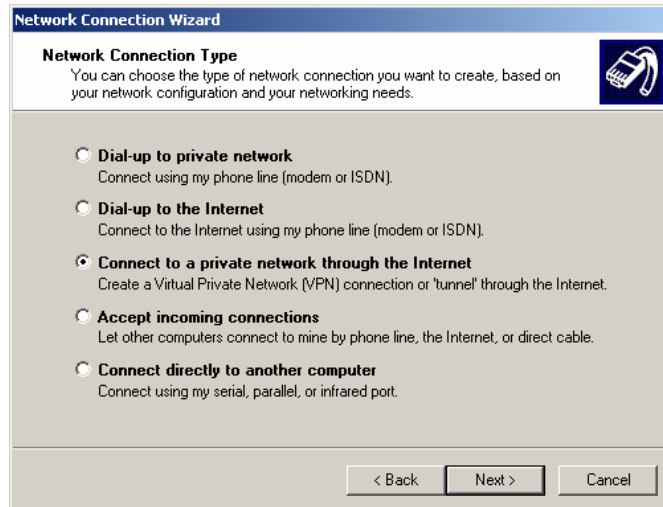


Figure 96: Windows 2000 Network Connection

2. Select the VPN option ("Connect to a private network through the Internet"), as shown above, and click *Next*.

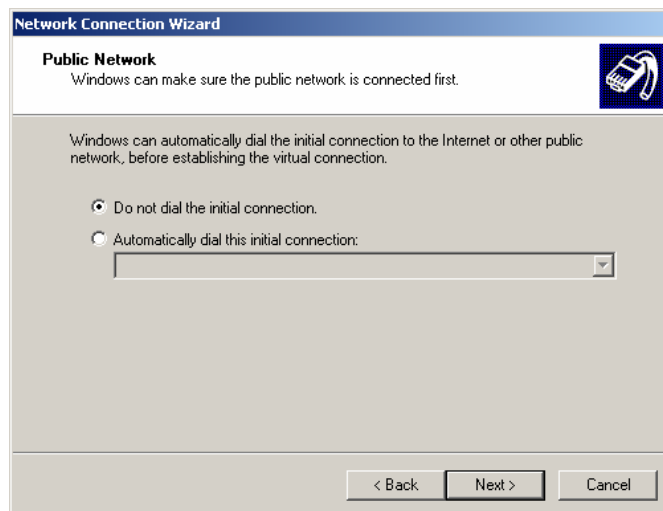


Figure 97: Windows 2000 Public Network

3. On the screen above:
 - Select "Do not dial the initial connection" if Internet access is via the LAN.
 - If using a PPPoE software client, select "Automatically dial this initial connection" and select the PPPoE connection.
 - Click *Next* to continue.

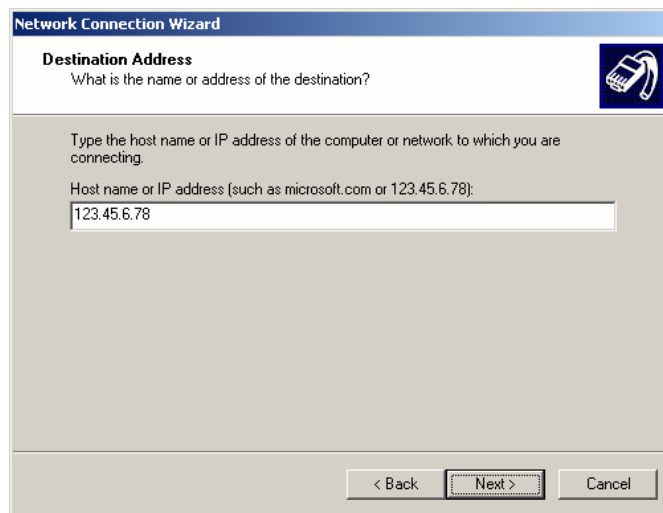


Figure 98: Windows 2000 VPN Host

4. On the screen above, enter the Domain Name or Internet IP address of the VPN Broadband Router you wish to connect to.
Click *Next* to continue.

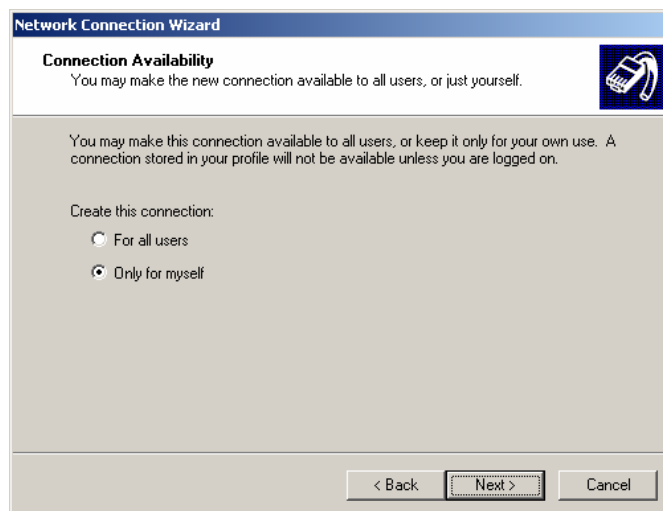


Figure 99: Windows 2000 Connection Availability

5. Choose whether to allow this connection for everyone, or only for yourself, as required.
Click *Next* to continue.

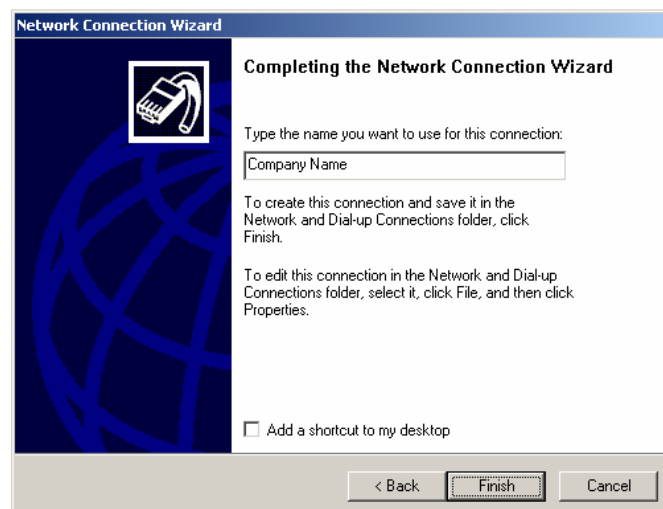


Figure 100: Windows 2000 Finish Wizard

6. Enter a suitable name, and click "Finish" to save and exit.

Setup is now complete.

To establish a connection:

1. Right-click the connection in "Network Connections", and select "Connect".
2. You will then be prompted for the username and password. Enter the username and password assigned to you, as recorded in the VPN client database on the VPN Broadband Router.
3. You can choose to have Windows remember the password if desired, so you do not have to enter it again.

Changing the connection settings

The PPTP (VPN) Server in the VPN Broadband Router is designed to work with the default Windows settings.

- If necessary, you can change the Windows settings by right-clicking the VPN connection in *Network Connections*, and selecting *Properties*.
- The *Properties* dialog has a *Networking* tab with a "Type of VPN" setting. If you have trouble connecting, you can change this setting from "Automatic" to "PPTP VPN".

Windows XP

Ensure you have logged on with Administrator rights before attempting this procedure.

1. Open *Network Connections* (Start-Settings-Network Connections), and start the New Connection Wizard.



Figure 101: Windows XP Network Connection Type

2. Select the option "Connect to the network at my workplace", as shown above, and click *Next*.

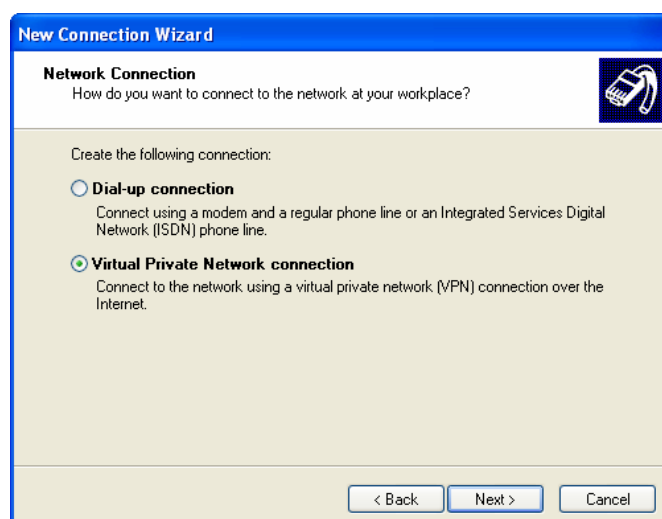


Figure 102: Windows XP Network Connection

3. On the next screen, shown above, select the "Virtual Private Network connection" option. Click *Next* to continue.

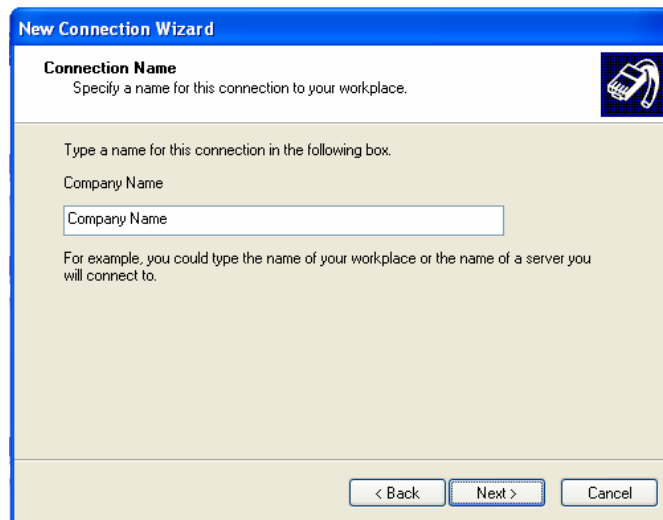


Figure 103: Windows XP Connection Name

4. Enter a suitable name for this connection.
Click *Next* to continue.

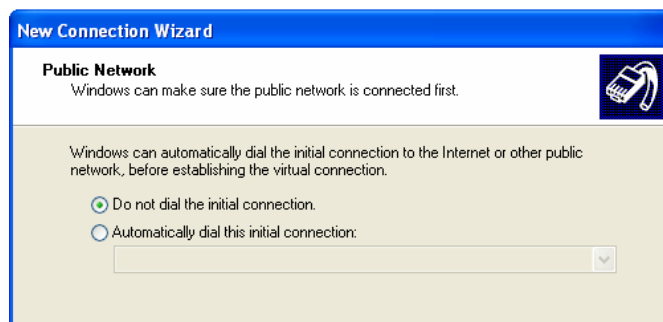


Figure 104: Windows XP Public Network

5. On the screen above, select "Do not dial the initial connection".
Click *Next* to continue.

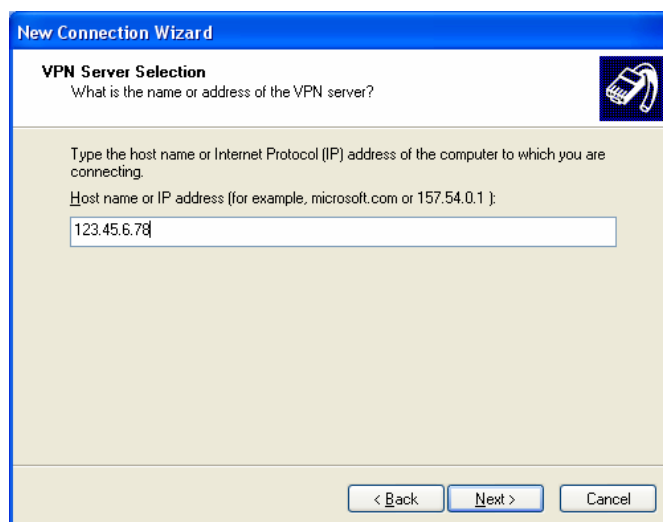


Figure 105: Windows XP VPN Server

6. On the screen above, enter the Domain Name or Internet IP address of the VPN Broadband Router you wish to connect to.
Click *Next* to continue.

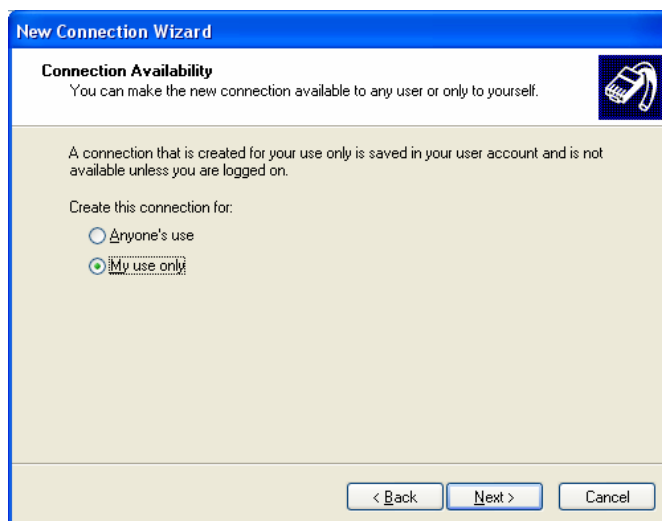


Figure 106: Windows XP Connection Availability

7. Choose whether to allow this connection for everyone, or only for yourself, as required. Click *Next* to continue.
8. On the final screen, click *Finish* to save and exit.

Setup is now complete.

To establish a connection:

1. Right-click the connection in "Network Connections", and select "Connect".
2. You will then be prompted for the username and password. Enter the username and password assigned to you, as recorded in the VPN client database on the VPN Broadband Router.
3. You can choose to have Windows remember the password if desired, so you do not have to enter it again.

Changing the connection settings

The PPTP (VPN) Server in the VPN Broadband Router is designed to work with the default Windows settings.

- If necessary, you can change the Windows settings by right-clicking the VPN connection in *Network Connections*, and selecting *Properties*.
- The *Properties* dialog has a *Networking* tab with a "Type of VPN" setting. If you have trouble connecting, you can change this setting from "Automatic" to "PPTP VPN".

Chapter 10

Other Features & Settings

10

This Chapter explains the screens and settings available via the "Other" menu.

Overview

Normally, it is not necessary to use these screens, or change any settings. These screens and settings are provided to deal with non-standard situations, or to provide additional options for advanced users.

The screens available are:

Config File	Backup or restore the configuration file for the VPN Broadband Router. This file contains all the configuration data.
Network Diagnostics	Ping, DNS Lookup.
PC Database	This is the list of PCs shown when you select the "DMZ PC", "Virtual Server", or "Internet Application". This database is maintained automatically, but you can add and delete entries for PCs which use a Fixed (Static) IP Address.
Remote Admin	This feature allows you to manage the VPN Broadband Router via the Internet.
Routing	Only required if your LAN has other Routers or Gateways.
Upgrade Firmware	The firmware (software) in the VPN Broadband Router can be upgraded using your Web Browser.
UPnP	UPnP (Universal Plug and Play) allows automatic discovery and configuration of the VPN Broadband Router

Config File

This feature allows you to backup (download) the current settings from the VPN Broadband Router, and save them to a file on your PC.

You can restore a previously-downloaded configuration file to the VPN Broadband Router, by uploading it to the VPN Broadband Router.

This screen also allows you to set the VPN Broadband Router back to its factory default configuration. Any existing settings will be deleted.

An example **Config File** screen is shown below.

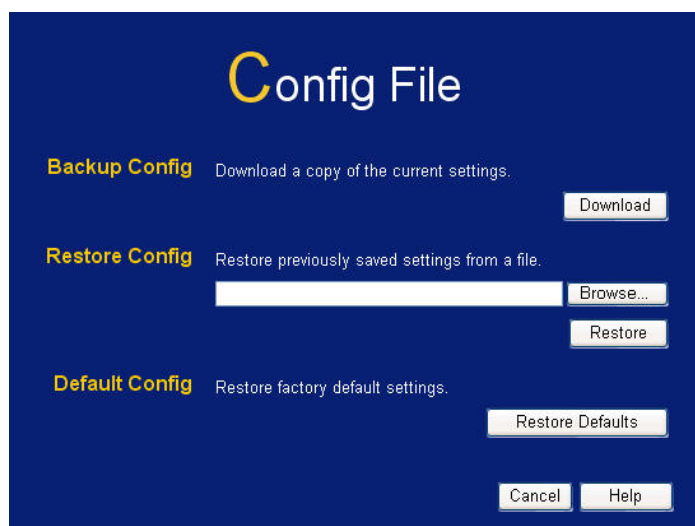


Figure 107: Config File Screen

Data - Config File Screen

Backup Config	Use this to download a copy of the current configuration, and store the file on your PC. Click <i>Download</i> to start the download.
Restore Config	<p>This allows you to restore a previously-saved configuration file back to the VPN Broadband Router.</p> <p>Click <i>Browse</i> to select the configuration file, then click <i>Restore</i> to upload the configuration file.</p> <p>WARNING !</p> <p>Uploading a configuration file will destroy (overwrite) ALL of the existing settings.</p>
Default Config	<p>Clicking the <i>Factory-e Defaults</i> button will reset the VPN Broadband Router to its factory default settings.</p> <p>WARNING !</p> <p>This will delete ALL of the existing settings.</p>

Network Diagnostics

This screen allows you to perform a "Ping" or a "DNS lookup". These activities can be useful in solving network problems.

An example **Network Diagnostics** screen is shown below.

Figure 108: Network Diagnostics Screen

Data - Network Diagnostics Screen

Ping	
IP Address	Enter the IP address you wish to ping. The IP address can be on your LAN, or on the Internet. Note that if the address is on the Internet, and no connection currently exists, you could get a "Timeout" error. In that case, wait a few seconds and try again.
Ping Button	After entering the IP address, click this button to start the "Ping" procedure. The results will be displayed in the <i>Ping Results</i> pane.
DNS Lookup	
Internet name	Enter the Domain name or URL for which you want a DNS (Domain Name Server) lookup. Note that if the address is on the Internet, and no connection currently exists, you could get a "Timeout" error. In that case, wait a few seconds and try again.
Lookup Button	After entering the Domain name/URL, click this button to start the "DNS Lookup" procedure.

PC Database

The PC Database is used whenever you need to select a PC (e.g. for the "DMZ" PC). It eliminates the need to enter IP addresses. Also, you do not need to use fixed IP addresses on your LAN.

PC Database Screen

An example PC Database screen is shown below.

PC Database

DHCP Clients are automatically added and updated.
If not listed, try restarting the PC.
PCs using a Fixed IP address can be added and deleted below.

Known PCs	
unknown	192.168.0.5 (LAN) (DHCP)
wyatt-dt	192.168.0.2 (LAN) (DHCP)
unknown	192.168.0.3 (LAN) (DHCP)

Figure 109: PC Database

- PCs which are "DHCP Clients" are automatically added to the database, and updated as required.
- By default, non-Server versions of Windows act as "DHCP Clients"; this setting is called "Obtain an IP Address automatically".
- The VPN Broadband Router uses the "Hardware Address" to identify each PC, not the name or IP address. The "Hardware Address" can only change if you change the PC's network card or adapter.
- This system means you do NOT need to use Fixed (static) IP addresses on your LAN. However, you can add PCs using Fixed (static) IP Addresses to the PC database if required.

Data - PC Database Screen

Known PCs	This lists all current entries. Data displayed is <i>name (IP Address) type</i> . The "type" indicates whether the PC is connected to the LAN.
Name	If adding a new PC to the list, enter its name here. It is best if this matches the PC's "hostname".
IP Address	Enter the IP Address of the PC. The PC will be sent a "ping" to determine its hardware address. If the PC is not available (not connected, or not powered On) you will not be able to add it.
Buttons	
Add	This will add the new PC to the list. The PC will be sent a "ping" to determine its hardware address. If the PC is not available (not connected, or not powered On) you will not be able to add it.
Delete	<p>Delete the selected PC from the list. This should be done in 2 situations:</p> <ul style="list-style-type: none"> • The PC has been removed from your LAN. • The entry is incorrect.
Refresh	Update the data on screen.
Generate Report	Display a read-only list showing full details of all entries in the PC database.
Advanced Administration	View the <i>Advanced</i> version of the PC database screen. See below for details.

PC Database (Admin)

This screen is displayed if the "Advanced Administration" button on the **PC Database** is clicked. It provides more control than the standard **PC Database** screen.

Figure 110: PC Database (Admin)

Data - PC Database (Admin) Screen

Known PCs	This lists all current entries. Data displayed is <i>name (IP Address) type</i> . The "type" indicates whether the PC is connected to the LAN.
PC Properties	
Name	If adding a new PC to the list, enter its name here. It is best if this matches the PC's "hostname".
IP Address	<p>Select the appropriate option:</p> <ul style="list-style-type: none"> • Automatic - The PC is set to be a DHCP client (Windows: "Obtain an IP address automatically"). The VPN Broadband Router will allocate an IP address to this PC when requested to do so. The IP address could change, but normally won't. • DCHP Client - Reserved IP Address - Select this if the PC is set to be a DCHP client, and you wish to guarantee that the VPN Broadband Router will always allocate the same IP Address to this PC. Enter the required IP address. Only the last field is required; the other fields must match the VPN Broadband Router 's IP address. • Fixed IP Address - Select this if the PC is using a Fixed (Static) IP address. Enter the IP address allocated to the PC. (The PC must be configured to use this IP address.)

MAC Address	<p>Select the appropriate option</p> <ul style="list-style-type: none"> • Automatic discovery - Select this to have the VPN Broadband Router contact the PC and find its MAC address. This is only possible if the PC is connected to the LAN and powered On. • MAC is - Enter the MAC address on the PC. The MAC address is also called the "Hardware Address", "Physical Address", or "Network Adapter Address". The VPN Broadband Router uses this to provide a unique identifier for each PC. Because of this, the MAC address can NOT be left blank.
Buttons	
Add as New Entry	Add a new PC to the list, using the data in the "Properties" box. If "Automatic discovery" (for MAC address) is selected, the PC will be sent a "ping" to determine its hardware address. This will fail unless the PC is connected to the LAN, and powered on.
Update Selected PC	Update (modify) the selected PC, using the data in the "Properties" box.
Clear Form	Clear the "Properties" box, ready for entering data for a new PC.
Refresh	Update the data on screen.
Generate Report	Display a read-only list showing full details of all entries in the PC database.
Standard Screen	Click this to view the standard "PC Database" screen.

	<ul style="list-style-type: none"> • Have your ISP allocate you a Fixed IP address. • Use the DDNS feature (Internet menu) so you can connect using a Domain Name, rather than an IP address.
Port Number	<p>Enter a port number between 1024 and 65535. The default for HTTP connections is port 80, and for HTTPS port 443. Using either of these is NOT recommended. The default value is 8080.</p> <p>The port number must be specified in your Browser when you connect, as explained above.</p>
Allow Remote Access	<p>This allows you to restrict remote access by IP address. Select the desired option.</p> <ul style="list-style-type: none"> • Everyone - Remote user's IP address is not checked. • IP address range - Only IP addresses in the range specified will be allowed. If selected, you must enter both the Start and Finish IP address. • Only this PC - Only the specified IP address is allowed. If selected, you must enter an IP address in the field provided.

To connect from a remote PC via the Internet

1. Ensure your Internet connection is established, and start your Web Browser.
2. In the "Address" bar, enter "HTTPS://" followed by the Internet IP Address of the VPN Broadband Router. If the port number is not 80, the port number is also required. (After the IP Address, enter ":" followed by the port number.)
e.g.

HTTPS://123.123.123.123:8080

This example assumes the WAN IP Address is 123.123.123.123, and the port number is 8080.

Routing

Overview

- If you don't have other Routers or Gateways on your LAN, you can ignore the "Routing" page completely.
- If the VPN Broadband Router is only acting as a Gateway for the local LAN segment, ignore the "Routing" page even if your LAN has other Routers.
- If your LAN has a standard Router (e.g. Cisco) on your LAN, and the VPN Broadband Router is to act as a Gateway for all LAN segments, enable RIP (Routing Information Protocol) and ignore the Static Routing table.
- If your LAN has other Gateways and Routers, and you wish to control which LAN segments use each Gateway, do NOT enable RIP (Routing Information Protocol). Configure the Static Routing table instead. (You also need to configure the other Routers.)
- If using Windows 2000 Data center Server as a software Router, enable RIP on the VPN Broadband Router, and ensure the following Windows 2000 settings are correct:
 - Open *Routing and Remote Access*
 - In the console tree, select *Routing and Remote Access, [server name], IP Routing, RIP*
 - In the "Details" pane, right-click the interface you want to configure for RIP version 2, and then click "Properties".
 - On the "General" tab, set *Outgoing packet protocol* to "RIP version 2 broadcast", and *Incoming packet protocol* to "RIP version 1 and 2".

Routing Screen

The routing table is accessed by the *Routing* link on the *Other* screen.

Using this Screen

Generally, you will use either RIP (Routing Information Protocol) OR the Static Routing Table, as explained above, although it is possible to use both methods simultaneously.

Static Routing Table

- If RIP is not used, an entry in the routing table is required for each LAN segment on your Network, other than the segment to which this device is attached.
- The other Routers must also be configured. See *Configuring Other Routers on your LAN* later in this chapter for further details and an example.

Routing

RIP RIP Version Disabled Save

Static Routing Static Routing Table Entries

--	--	--	--	--

Properties

Destination Network:

Network Mask:

Gateway IP Address:

Interface: LAN

Metric:

Clear Form

Add Update Delete

Generate Report Help

Figure 112: Routing Screen

Data - Routing Screen

RIP	
Enable RIP	<p>Check this to enable the RIP (Routing Information Protocol) feature of the VPN Broadband Router.</p> <p>The VPN Broadband Router supports RIP 1 only.</p>
Static Routing	
Static Routing Table Entries	<p>This list shows all entries in the Routing Table.</p> <ul style="list-style-type: none"> The "Properties" area shows details of the selected item in the list. Change any the properties as required, then click the "Update" button to save the changes to the selected entry.

Properties	<ul style="list-style-type: none"> • Destination Network - The network address of the remote LAN segment. For standard class "C" LANs, the network address is the first 3 fields of the Destination IP Address. The 4th (last) field can be left at 0. • Network Mask - The Network Mask for the remote LAN segment. For class "C" networks, the default mask is 255.255.255.0 • Gateway IP Address - The IP Address of the Gateway or Router which the VPN Broadband Router must use to communicate with the destination above. (NOT the router attached to the remote segment.) • Interface - Normally, this will be "LAN". If NAT is disabled, the "WAN" option can be used for Routers which are accessed via the WAN port. • Metric - The number of "hops" (routers) to pass through to reach the remote LAN segment. The shortest path will be used. The default value is 1.
Buttons	
Save	Save the RIP setting. This has no effect on the Static Routing Table.
Add	Add a new entry to the Static Routing table, using the data shown in the "Properties" area on screen. The entry selected in the list is ignored, and has no effect.
Update	Update the current Static Routing Table entry, using the data shown in the "Properties" area on screen.
Delete	Delete the current Static Routing Table entry.
Clear Form	Clear all data from the "Properties" area, ready for input of a new entry for the Static Routing table.
Generate Report	Generate a read-only list of all entries in the Static Routing table.

Configuring Other Routers on your LAN

It is essential that all IP packets for devices not on the local LAN be passed to the VPN Broadband Router, so that they can be forwarded to the external LAN, WAN, or Internet. To achieve this, the local LAN must be configured to use the VPN Broadband Router as the *Default Route* or *Default Gateway*.

Local Router

The local router is the Router installed on the same LAN segment as the VPN Broadband Router. This router requires that the *Default Route* is the VPN Broadband Router itself. Typically, routers have a special entry for the *Default Route*. It should be configured as follows.

Destination IP Address	Normally 0.0.0.0, but check your router documentation.
Network Mask	Normally 0.0.0.0, but check your router documentation.
Gateway IP Address	The IP Address of the VPN Broadband Router.
Interface	LAN
Metric	2

Other Routers on the Local LAN

Other routers on the local LAN must use the VPN Broadband Router's *Local Router* as the *Default Route*. The entries will be the same as the VPN Broadband Router's local router, with the exception of the *Gateway IP Address*.

- For a router with a direct connection to the VPN Broadband Router's local Router, the *Gateway IP Address* is the address of the VPN Broadband Router's local router.
- For routers which must forward packets to another router before reaching the VPN Broadband Router's local router, the *Gateway IP Address* is the address of the intermediate router.

Static Routing - Example

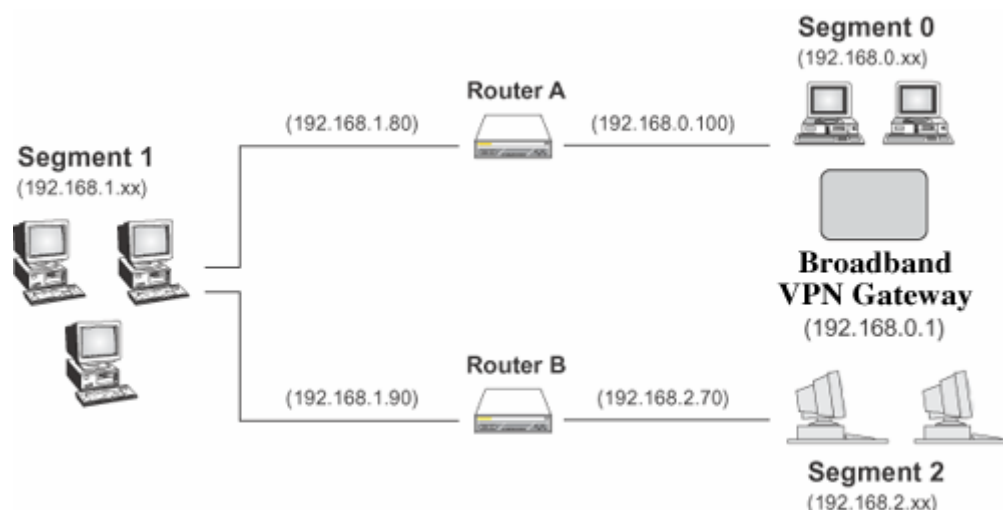


Figure 113: Routing Example

For the VPN Broadband Router's Routing Table

For the LAN shown above, with 2 routers and 3 LAN segments, the VPN Broadband Router requires 2 entries as follows.

Entry 1 (Segment 1)	
Destination IP Address	192.168.1.0
Network Mask	255.255.255.0 (Standard Class C)
Gateway IP Address	192.168.0.100 (VPN Broadband Router's local Router)
Interface	LAN
Metric	2
Entry 2 (Segment 2)	
Destination IP Address	192.168.2.0
Network Mask	255.255.255.0 (Standard Class C)
Gateway IP Address	192.168.0.100
Interface	LAN
Metric	3

For Router A's Default Route

Destination IP Address	0.0.0.0
Network Mask	0.0.0.0
Gateway IP Address	192.168.0.1 (VPN Broadband Router's IP Address)

Interface	LAN
-----------	-----

For Router B's Default Route

Destination IP Address	0.0.0.0
Network Mask	0.0.0.0
Gateway IP Address	192.168.1.80 (VPN Broadband Router 's local router)
Interface	LAN

Upgrade Firmware

Use this screen to upgrade your VPN Broadband Router's firmware.

- You must download the required firmware file, and store it on your PC.
- During the upgrade process, all existing Internet connections will be terminated.
- The upgrade process must NOT be interrupted!.

Figure 114: Upgrade Firmware Screen

Data – Upgrade Firmware Screen

Upgrade Firmware	
VPN Broadband Router Password	Enter the current password assigned to the VPN Broadband Router. If no password has been assigned, leave this blank.
Upgrade File	Click the "Browse" button and browse to the location on your PC where you stored the firmware upgrade file. Select this file.
Start Upgrade	Click this button to start the Firmware upgrade. Note that any users accessing the Internet via the VPN Broadband Router will lose their connection. When the upgrade is finished, the VPN Broadband Router will restart, and this management connection will be unavailable during the restart.
Cancel	Cancel does NOT stop the Upgrade process if it has started. It only clears the input for the "Upgrade File" field.

To perform the Firmware Upgrade:

1. Click the "Browse" button and navigate to the location of the upgrade file.
2. Select the upgrade file. Its name will appear in the *Upgrade File* field.
3. Click the "Start Upgrade" button to commence the firmware upgrade.



Note!

The VPN Broadband Router is unavailable during the upgrade process, and must restart when the upgrade is completed. Any connections to or through the VPN Broadband Router will be lost.

UPnP

An example UPnP screen is shown below.

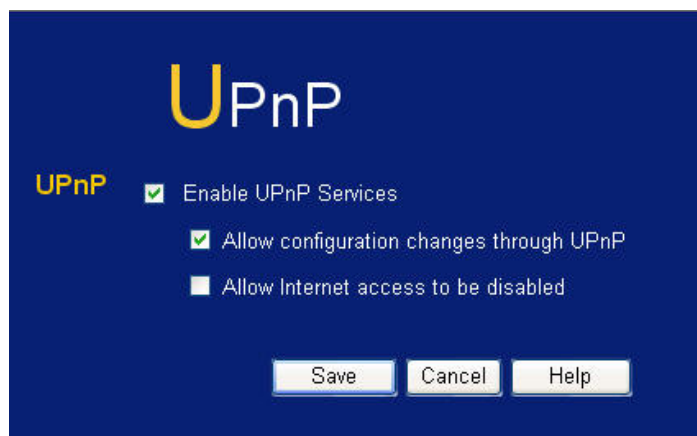


Figure 115: UPnP Screen

Data - UPnP Screen

UPnP	
Enable UPnP Services	<ul style="list-style-type: none"> • UPnP (Universal Plug and Play) allows automatic discovery and configuration of equipment attached to your LAN. UPnP is supported by Windows ME, XP, or later. • If Enabled, this device will be visible via UPnP. • If Disabled, this device will not be visible via UPnP.
Allow Configuration...	<ul style="list-style-type: none"> • If checked, then UPnP users can change the configuration. • If Disabled, UPnP users can only view the configuration. But currently, this restriction only applies to users running Windows XP, who access the <i>Properties</i> via UPnP. (e.g. Right - click the VPN Broadband Router in <i>My Network Places</i>, and select <i>Properties</i>)
Allow Internet access to be disabled	<ul style="list-style-type: none"> • If checked, then UPnP users can disable Internet access via this device. • If Disabled, UPnP users can NOT disable Internet access via this device. But currently, this restriction only applies to users running Windows XP, who access the <i>Properties</i> via UPnP. (e.g. Right - click the VPN Broadband Router in <i>My Network Places</i>, and select <i>Properties</i>)

Appendix A

Troubleshooting



This Appendix covers the most likely problems and their solutions.

Overview

This chapter covers some common problems that may be encountered while using the VPN Broadband Router and some possible solutions to them. If you follow the suggested steps and the VPN Broadband Router still does not function properly, contact your dealer for further advice.

General Problems

Problem 1: Can't connect to the VPN Broadband Router to configure it.

Solution 1: Check the following:

- The VPN Broadband Router is properly installed, LAN connections are OK, and it is powered ON.
- Ensure that your PC and the VPN Broadband Router are on the same network segment. (If you don't have a router, this must be the case.)
- If your PC is set to "Obtain an IP Address automatically" (DHCP client), restart it.
- If your PC uses a Fixed (Static) IP address, ensure that it is using an IP Address within the range 192.168.0.2 to 192.168.0.254 and thus compatible with the VPN Broadband Router's default IP Address of 192.168.0.1.
Also, the Network Mask should be set to 255.255.255.0 to match the VPN Broadband Router.
In Windows, you can check these settings by using *Control Panel-Network* to check the *Properties* for the TCP/IP protocol.

Internet Access

Problem 1: When I enter a URL or IP address I get a time out error.

Solution 1: A number of things could be causing this. Try the following troubleshooting steps.

- Check if other PCs work. If they do, ensure that your PCs IP settings are correct. If using a Fixed (Static) IP Address, check the Network Mask, Default gateway and DNS as well as the IP Address.
- If the PCs are configured correctly, but still not working, check the VPN Broadband Router. Ensure that it is connected and ON. Connect to it and check its settings. (If you can't connect to it, check the LAN and power connections.)
- If the VPN Broadband Router is configured correctly, check your Internet connection (DSL/Cable modem etc) to see that it is working correctly.

Problem 2: Some applications do not run properly when using the VPN Broadband Router.

Solution 2: The VPN Broadband Router processes the data passing through it, so it is not transparent.

Use the *Special Applications* feature to allow the use of Internet

applications which do not function correctly.

If this does solve the problem you can use the *DMZ* function. This should work with almost every application, but:

- It is a security risk, since the firewall is disabled.
- Only one (1) PC can use this feature.

Appendix B

Specifications



VPN Broadband Router

Model	FBR-1430 VPN Broadband Router
Dimensions	141mm(W) * 100mm(D) * 27mm(H)
Operating Temperature	0° C to 40° C
Storage Temperature	-10° C to 70° C
Network Protocol:	TCP/IP
Network Interface:	5 Ethernet: 4 * 10/100BaseT (RJ45) LAN connection 1 * 10/100BaseT (RJ45) for WAN
LEDs	11
Power Adapter	12V DC 1A External

FCC Statement

This equipment has been tested and found to comply with the limits for a Class B digital device, pursuant to Part 15 of the FCC Rules. These limits are designed to provide reasonable protection against harmful interference in a residential installation.

This equipment generates uses and can radiate radio frequency energy and, if not installed and used in accordance with the instructions, may cause harmful interference to radio communications. However, there is no guarantee that interference will not occur in a particular installation. If this equipment does cause harmful interference to radio or television reception, which can be determined by turning the equipment off and on, the user is encouraged to try to correct the interference by one of the following measures:

- Reorient or relocate the receiving antenna.
- Increase the separation between the equipment and receiver.
- Connect the equipment into an outlet on a circuit different from that to which the receiver is connected.
- Consult the dealer or an experienced radio/TV technician for help.

To assure continued compliance, any changes or modifications not expressly approved by the party responsible for compliance could void the user's authority to operate this equipment. (Example - use only shielded interface cables when connecting to computer or peripheral devices).

FCC Radiation Exposure Statement

This equipment complies with FCC RF radiation exposure limits set forth for an uncontrolled environment. This equipment should be installed and operated with a minimum distance of 20 centimeters between the radiator and your body.

This device complies with Part 15 of the FCC Rules. Operation is subject to the following two conditions:

- (1) This device may not cause harmful interference, and
- (2) This device must accept any interference received, including interference that may cause undesired operation.

This transmitter must not be co-located or operating in conjunction with any other antenna or transmitter.

CE Marking Warning

CE Standards

This product complies with the 99/5/EEC directives, including the following safety and EMC standards:

- EN301489-1/-17
- EN60950

This is a Class B product. In a domestic environment this product may cause radio interference in which case the user may be required to take adequate measures.

