



LevelOne

BLH-1200
Bluetooth Stereo Headset

User Manual

Ver 1.0.0 - 0601



Stereo Headset & Dongle with Bluetooth wireless technology

Copyright

This publication, including all photographs, illustrations and software, is protected under international copyright laws, with all rights reserved. Neither this manual, nor any of the material contained herein, may be reproduced without written consent of the author.

Copyright 2005

Version 1.0, Dec. 2005

Disclaimer

The information in this document is subject to change without notice. The manufacturer makes no representations or warranties with respect to the contents hereof and specifically disclaims any implied warranties of merchantability or fitness for any particular purpose. The manufacturer reserves the right to revise this publication and to make changes from time to time in the content hereof without obligation of the manufacturer to notify any person of such revision or changes.

Trademark Recognition

Bluetooth is a trademark of the Bluetooth SIG, Inc. (Special Interest Group). The Bluetooth trademark is owned by Bluetooth SIG, Inc. USA.

BlueSoleil is a trademark of IVT Corporation. Winamp is a trademark of Nulsoft Incorporated.

Windows Media Player is a trademark of Microsoft Corporation. Other product names used in this manual are the properties of their respective owners and are acknowledged.

Federal Communications Commission (FCC)

This equipment has been tested and found to comply with the limits for a Class B digital device, pursuant to Part 15 of the FCC Rules. These limits are designed to provide reasonable protection against harmful interference in a residential installation. This equipment generates, uses, and can radiate radio frequency energy and, if not installed and used in accordance with the instructions, may cause harmful interference to radio communications. However, there is no guarantee that interference will not occur in a particular installation. If this equipment does cause harmful interference to radio or television reception, which can be determined by turning the equipment off and on, the user is encouraged to try to correct the interference by one or more of the following measures:

- Reorient or relocate the receiving antenna.
- Increase the separation between the equipment and the receiver.
- Connect the equipment onto an outlet on a circuit different from that to which the receiver is connected.
- Consult the dealer or an experienced radio/TV technician for help.

Shielded interconnect cables and a shielded AC power cable must be employed with this equipment to ensure compliance with the pertinent RF emission limits governing this device. Changes or modifications not expressly approved by the system's manufacturer could void the user's authority to operate the equipment.

About This Manual

This manual provides information for setting up and configuring the Headset Kit. This manual is intended for home users

Safety Information

- Only use the supplied travel adapter.
- Do not place anything on the power cord. Place the power cord where it will not be in the way of foot traffic.
- Before cleaning the headset or transmitter, disconnect the travel charger.

Conventions Used in this Manual

The following conventions are used in this manual.




	<p>NOTE ICON:</p> <p>PROVIDES MORE INFORMATION ON THE CURRENT TOPIC.</p>
	<p>IMPORTANT ICON:</p> <p>PROVIDES IMPORTANT INFORMATION ON THE CURRENT TOPIC THAT MUST NOT BE OVERLOOKED.</p>
	<p>WARNING ICON:</p> <p>ALERTS YOU TO A SITUATION THAT COULD CAUSE PERSONAL INJURY.</p>

Table of Contents

GETTING STARTED WITH THE HEADSET KIT.....	6
UNPACKING AND CHECKING THE CONTENTS	6
HEADSET PARTS.....	7
TRANSMITTER PARTS.....	8
HEADSET STATUS LEDS MAIN FUNCTIONS	9
TRANSMITTER STATUS LEDS MAIN FUNCTIONS.....	9
CHARGING THE HEADSET AND TRANSMITTER BATTERIES	10
CHARGING THE HEADSET WITH THE USB CABLE.....	10
CHARGING THE TRANSMITTER WITH THE USB CABLE	11
CHARGING THE HEADSET WITH THE TRAVEL ADAPTER	12
SOFTWARE AND DRIVER INSTALLATION.....	13
INSTALLING DRIVERS FOR THE TRANSMITTER	17
OPERATION.....	21
CONNECTING THE TRANSMITTER TO AN AUDIO DEVICE.....	21
PAIRING DEVICES	22
PAIRING THE HEADSET AND TRANSMITTER	22
PAIRING THE HEADSET WITH THE IVT BLUESOLEIL PROGRAM	23
USING THE HEADSET WITH YOUR COMPUTER	26
PAIRING WITH A BLUETOOTH ENABLED PHONE	26
ANSWERING CALLS	27
HEADSET OPERATION.....	27
ADJUSTING THE VOLUME	27
SKIPPING TRACKS	27
APPENDIX.....	28
TROUBLESHOOTING	28
RESETTING THE HEADSET	28

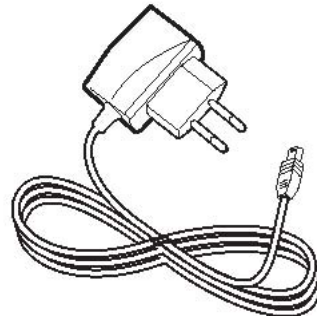
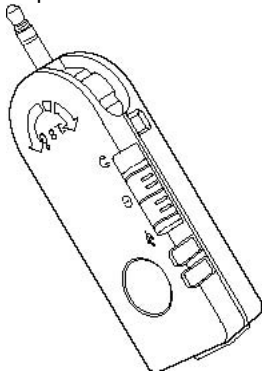
HEADSET AND TRANSMITTER LEDs DETAILED DESCRIPTIONS	29
HEADSET LED	29
USB CONNECTOR	29
AUDIO JACK	29
AVAILABLE SERVICES	29
AUDIO CONNECTION	29
USB CONNECTION WITH IVT BLUESOLEIL	30
SPECIFICATIONS	30
TRANSMITTER HEADSET	30

GETTING STARTED WITH THE HEADSET KIT

Congratulations on your purchase! This section covers unpacking the Headset Kit and identifying components.

Unpacking and Checking the Contents

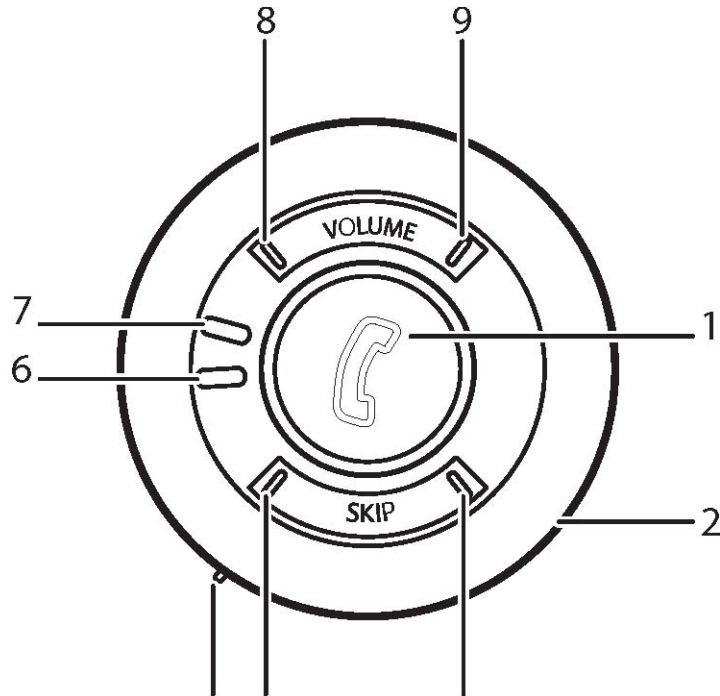
Unpack the Headset Kit and check that the following items are included:



Transmitter Headset Travel Charger
Utility CD-ROM (Contains drivers, Manual)
USB Cable
Quick Installation Guide

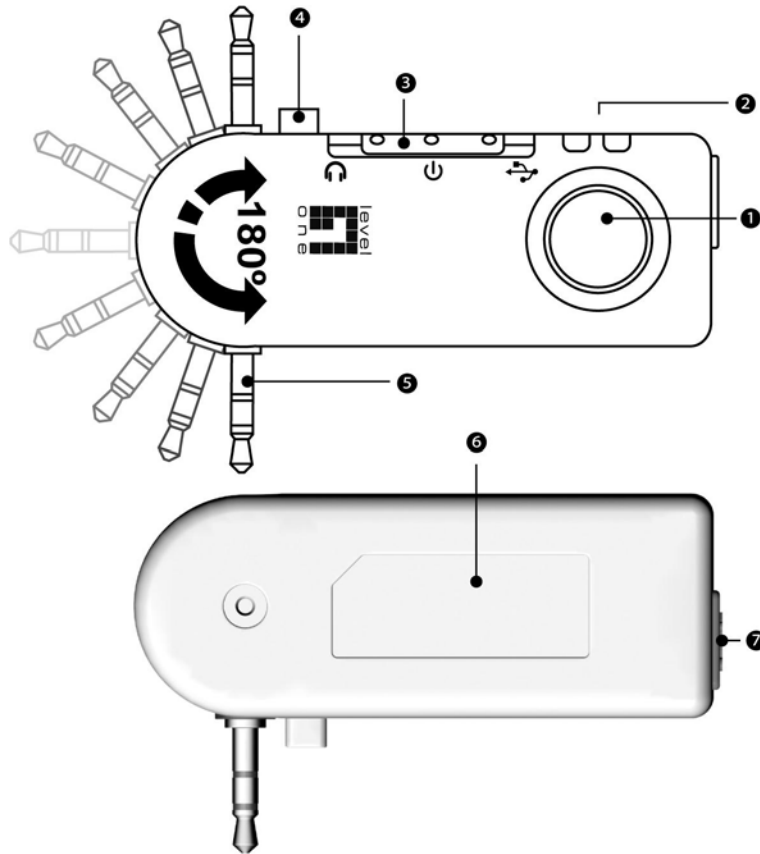
If any item is missing or damaged, repack the Headset Kit and return it to your reseller.
Identifying Components The following illustrations show the headset and transmitter.

HEADSET PARTS



1	Pair/answer button	
	Press to pair with a device	"Pairing Devices" on page 22
	Press to answer incoming call	"Answering Calls" on page 27
2	Microphone	
3	Next	"Skipping Tracks" on page 27
4	Previous	
5	USB Connector	"Charging the Headset with the USB Cable" on page 10
	Reset Button	"Resetting the Headset" on page 28
6	Power LED	"Headset Status LEDs Main Functions" on page 9
7	Link LED	
8	Volume down	"Adjusting the Volume" on page 27
9	Volume up	

TRANSMITTER PARTS



	Stabilizer pin (4)	"Connecting the Transmitter to an Audio Device" on page 21
	Mode switch (3)	"Mode Switch" on page 9
	Link LED (2)	"Transmitter Status LEDs Main Functions" on page 9
	Power LED	
	USB connector (7)	"Charging the Transmitter with the USB Cable" on page 10 "Pairing the Headset with the IVT BlueSoleil Program" on page 23
	Pair button (1)	"Pairing Devices" on page 22
	Audio jack (5)	"Connecting the Transmitter to an Audio Device" on page 21

HEADSET STATUS LEDS MAIN FUNCTIONS

For more details on the status of the LEDs, see “Headset and Transmitter LEDs Detailed Descriptions” on page 25

LINK LED POWER LED

Color	Function
Yellow flashing	Power on, searching
Blue flashing	Connected to device

Color	Function
Red	Charging
Green	Charging complete

TRANSMITTER STATUS LEDS MAIN FUNCTIONS

For more details on the status of the LEDs, see “Headset and Transmitter LEDs Detailed Descriptions” on page 29

LINK LED

Color	Function
Blue flashing quickly	Power on, searching
Blue flashing slowly	Connected to device

POWER LED

Color	Function
Red	Charging
Green	Charging complete

MODE SWITCH


The mode switch on the transmitter has three positions as described below.

Position	Function
	Set to Headset when you want to pair with the headset. See “Pairing Devices” on page 22
	Set to Power when you want to con

	nect to your computer to charge the battery. See “Charging the Transmitter with the USB Cable” on page 11
	Set to USB when you want to link with the IVT BlueSoleil program on your computer. See “Pairing the Headset with the IVT BlueSoleil Program” on page 23

Charging the Headset and Transmitter Batteries

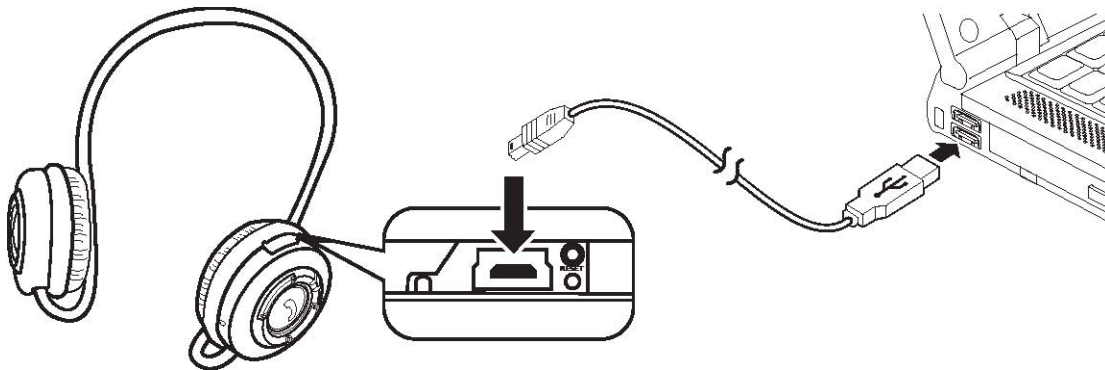
The headset and the transmitter both have a built-in rechargeable battery. Batteries can be charged through the USB cable or the travel charger.

	CHARGING TIME IS ABOUT 2.5 HOURS. THE DEVICES NEED TO BE RECHARGED AFTER ABOUT 6 HOURS OF CONTINUOUS USE.
---	---

CHARGING THE HEADSET WITH THE USB CABLE

Refer to the following to charge the headset with the USB cable.

1. Connect the small connector on the USB cable to the headset.
2. Connect the other end of the cable to a USB connector on your computer.




MOST NOTEBOOK COMPUTER USB CONNECTORS ARE HORIZONTAL. THE USB CABLE SHOULD BE CONNECTED WITH THE USB ICON FACING UP. IF THE USB CONNECTOR ON YOUR COMPUTER IS VERTICAL, CONNECT THE CABLE CAREFULLY TO AVOID DAMAGING THE CONNECTORS.

The Power LED lights red to indicate charging.

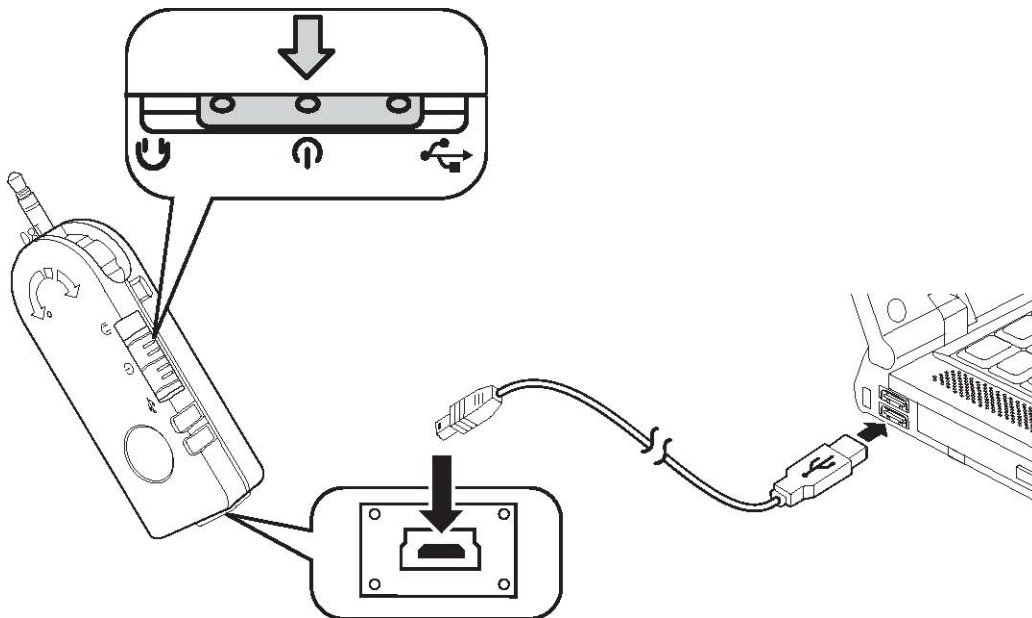
3. Unplug the USB cable when the Power LED changes to green.

CHARGING THE TRANSMITTER WITH THE USB CABLE

Refer to the following to charge the transmitter with the USB cable.

	<p>ENSURE THE MODE BUTTON ON THE TRANSMITTER IS SET TO POWER. IF THE MODE BUTTON IS SET TO USB, YOUR COMPUTER DETECTS AND TRIES TO INSTALL THE NEW HARDWARE. THE TRANSMITTER CAN NOT BE CHARGED IN USB MODE.</p>
---	--

1. Connect the small connector on the USB cable to the transmitter.
2. Set the mode button to Power.
3. Connect the other end of the cable to a USB connector on your computer.



MOST NOTEBOOK COMPUTER USB CONNECTORS ARE HORIZONTAL. THE USB CABLE SHOULD BE CONNECTED WITH THE USB ICON FACING UP. IF THE USB CONNECTOR ON YOUR COMPUTER IS VERTICAL, CONNECT THE CABLE CAREFULLY TO AVOID DAMAGING THE CONNECTORS.

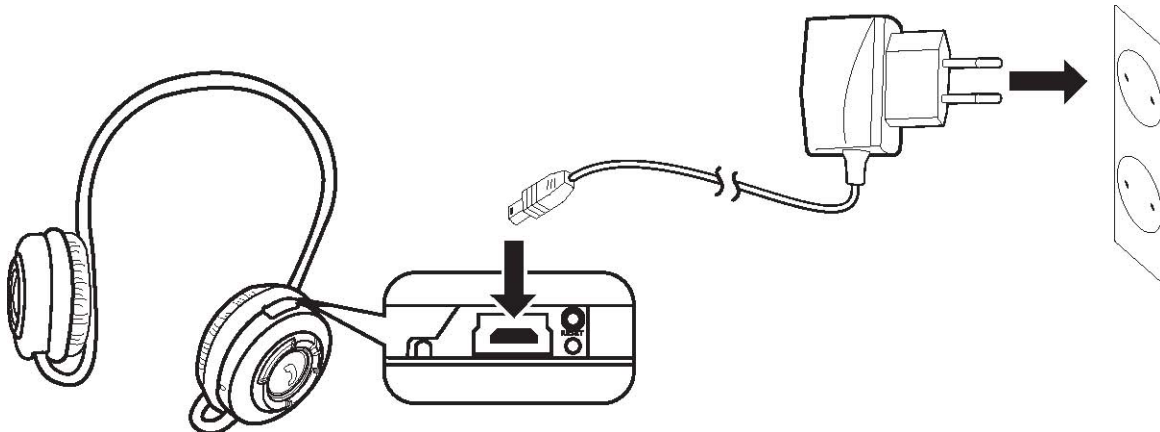
The Power LED lights red to indicate charging.

4. Unplug the USB cable when the Power LED changes to green.

CHARGING THE HEADSET WITH THE TRAVEL ADAPTER

Refer to the following to charge the headset with the travel adapter.

1. Connect the small USB connector on the travel adapter to the headset.
2. Connect the adapter to an electrical outlet.



THE TRAVEL ADAPTER CAN BE USED WITH 110V AND 220V (AUTO SWITCHING). IF YOU NEED TO USE A SOCKET ADAPTER, BE SURE THE ADAPTER IS CORRECTLY GROUNDED FOR YOUR LOCATION.

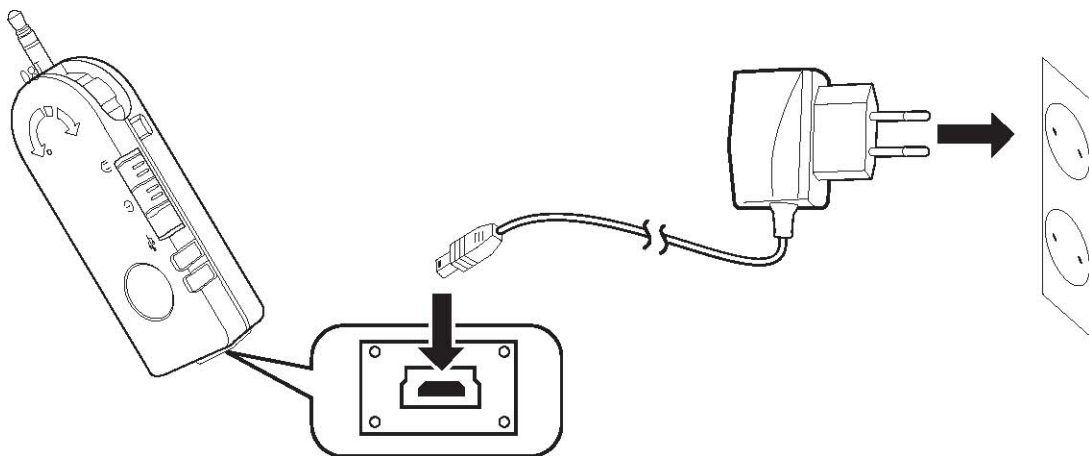
The Power LED lights red to indicate charging.

3. Unplug the travel adapter when the Power LED changes to green.

CHARGING THE TRANSMITTER WITH THE TRAVEL ADAPTER

Refer to the following to charge the headset or transmitter with the travel adapter.

1. Connect the small USB connector on the travel adapter to the transmitter.
2. Connect the adapter to an electrical outlet.



THE TRAVEL ADAPTER CAN BE USED WITH 110V AND 220V (AUTO SWITCHING). IF YOU NEED TO USE A SOCKET ADAPTER, BE SURE THE ADAPTER IS CORRECTLY GROUNDED FOR YOUR LOCATION.

The Power LED lights red to indicate charging.

3. Unplug the travel adapter when the Power LED changes to green.

SOFTWARE AND DRIVER INSTALLATION

Installing the IVT BlueSoleil™ Software

The IVT BlueSoleil software allows you to manage audio transmissions between your computer and Bluetooth enabled devices.



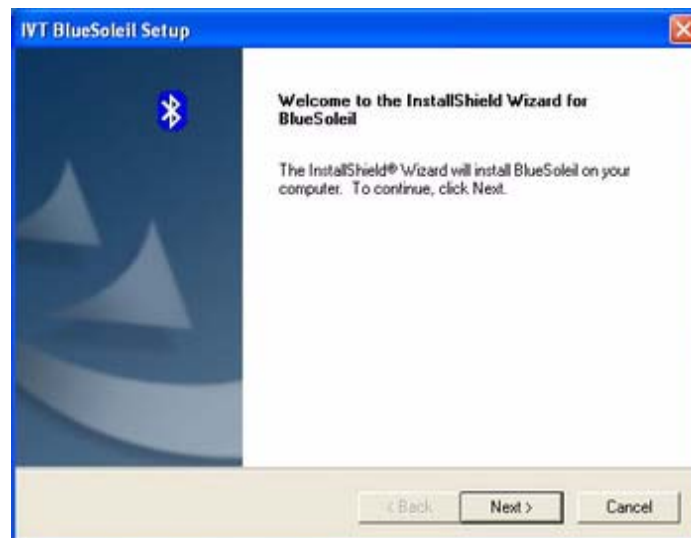
IF YOU HAVE OTHER **BLUETOOTH** SOFTWARE INSTALLED, YOU DO NOT HAVE TO REMOVE IT TO INSTALL THE **IVT BLUESOLEIL** SOFTWARE. HOWEVER, YOUR CURRENT **BLUETOOTH** SOFTWARE WILL NOT FUNCTION AFTER YOU INSTALL THE **IVT BLUESOLEIL** SOFTWARE.

1. Insert the supplied utility CD into your CD drive.
2. Click **Start -> My Computer**, and then browse to the CD drive.

Choose the language you want and click **OK**.



Click **Next** to continue

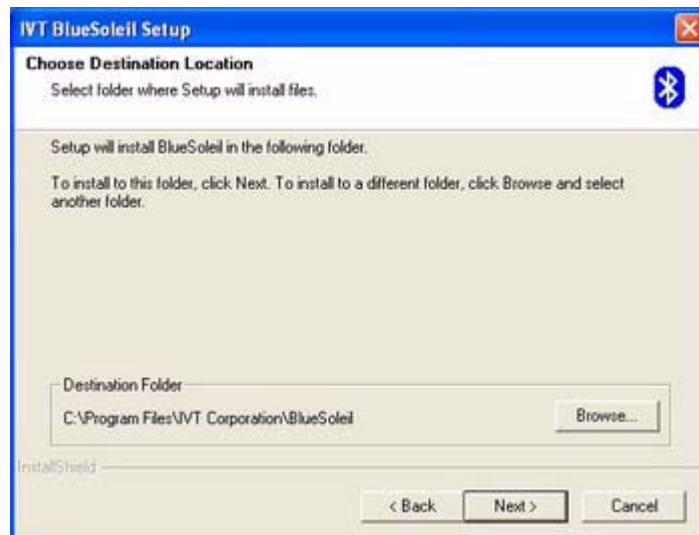


Read the license agreement and click **Yes**.



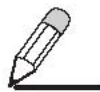
Click **Next** to start the installation.

The installation takes a few minutes, and then the following screen appears



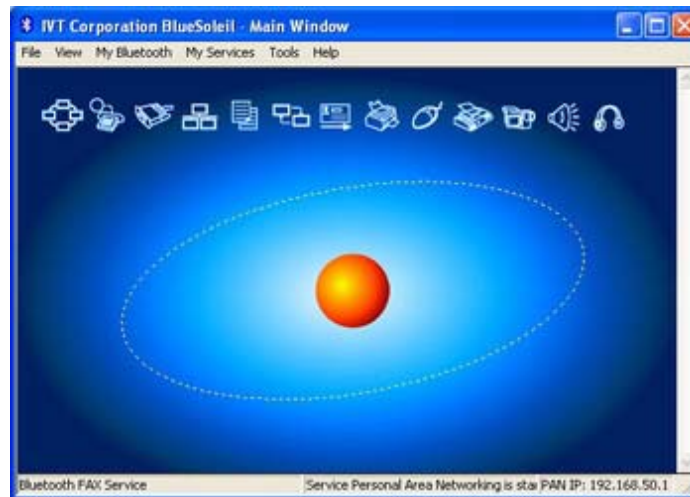
Click **Finish** to complete the installation and reboot your computer. When your computer restarts, the following screen appears.

Click **OK** to continue. The IVT BlueSoleil program opens.
Click **File -> Exit** to close the program.



DEPENDING ON YOUR OPERATING SYSTEM, THE SCREEN BELOW MAY NOT APPEAR UNTIL THE FIRST TIME YOU OPEN THE **IVT BLUESOLEIL** PROGRAM.






To learn about this program, click **Help** on the main toolbar. The IVT BlueSoleil help application opens.



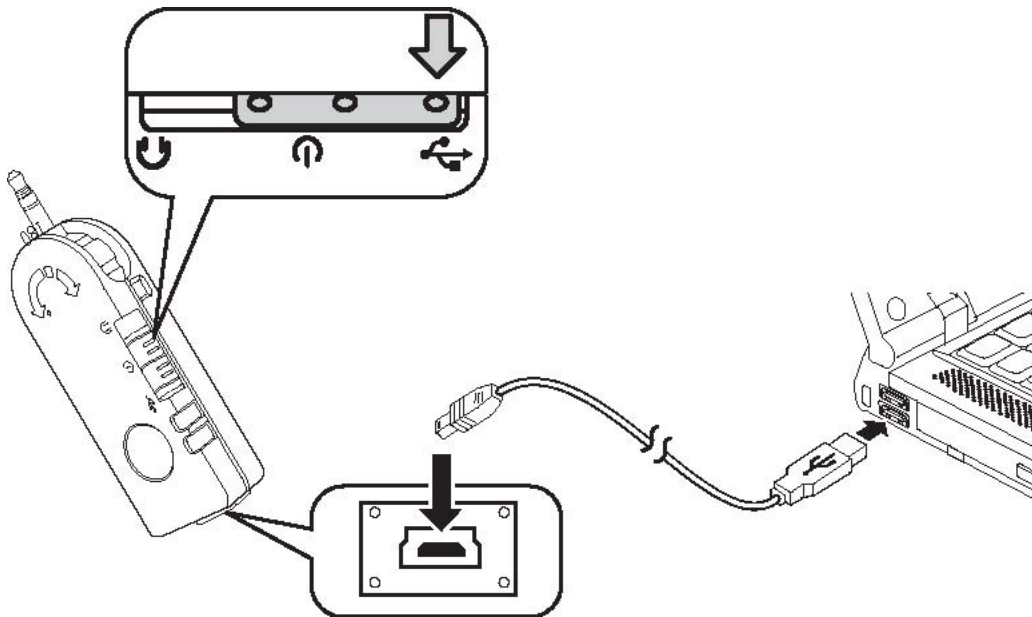
The program includes many service such as using your computer as a server. Look in the Help application for instructions on how to enable these services.

Installing Drivers for the Transmitter

Refer to the following to install drivers for the transmitter.

	<p>THE FOLLOWING PROCEDURE IS FOR WINDOWS XP. SCREENS FOR OTHER OPERATING SYSTEMS ARE DIFFERENT, HOWEVER THE PROCEDURE TO FOLLOW IS VERY SIMILAR AS THAT DESCRIBED BELOW.</p>
---	--

1. Connect the transmitter to a USB connector on your computer.



2. Set the mode switch on the transmitter to **USB**.
3. The system detects the new hardware and the following screen appears.



4. Select the **No, not this time** radio button and click **Next**.



5. Select the **Install from a list or specific location (Advanced)** radio button and click **Next**.



6. Browse to the WindowsXP folder (or the folder for your OS) on the CD: **Cyber Headset -> IVT BlueSoleil -> USBDrivers -> WindowsXP**, and then click **OK**.
7. Click **Next** to continue.
8. Click **Finish** to complete the installation.

Found New Hardware Wizard

Please choose your search and installation options.

☒ Search for the best driver in these locations.
Use the check boxes below to limit or expand the default search, which includes local paths and removable media. The best driver found will be installed.

☐ Search removable media (floppy, CD-ROM...)

☒ Include this location in the search:
E:\USBDrivers\WindowsXP Browse

☐ Don't search. I will choose the driver to install.
Choose this option to select the device driver from a list. Windows does not guarantee that the driver you choose will be the best match for your hardware.

< Back Next > Cancel

Found New Hardware Wizard

 **Completing the Found New Hardware Wizard**

The wizard has finished installing the software for:

 Zeevo TC2000 Bluetooth HCI Device

Click Finish to close the wizard.

< Back Finish Cancel

OPERATION

This section covers pairing the transmitter and headset for use with audio devices, pairing the headset with your computer, and pairing with your mobile phone.

Connecting the Transmitter to an Audio Device

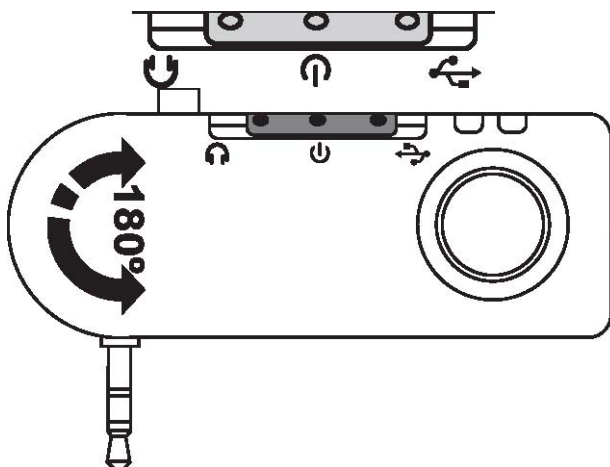


THE 3.5-MM (1/8 INCH) AUDIO JACK ON THE TRANSMITTER IS THE SAME SIZE AS THE STANDARD JACKS ON COMPUTERS AND ON MOST AUDIO DEVICES. IF YOUR AUDIO DEVICE USES A DIFFERENT SIZE JACK, YOU CAN PURCHASE AN ADAPTER AT MOST ELECTRICAL STORES.

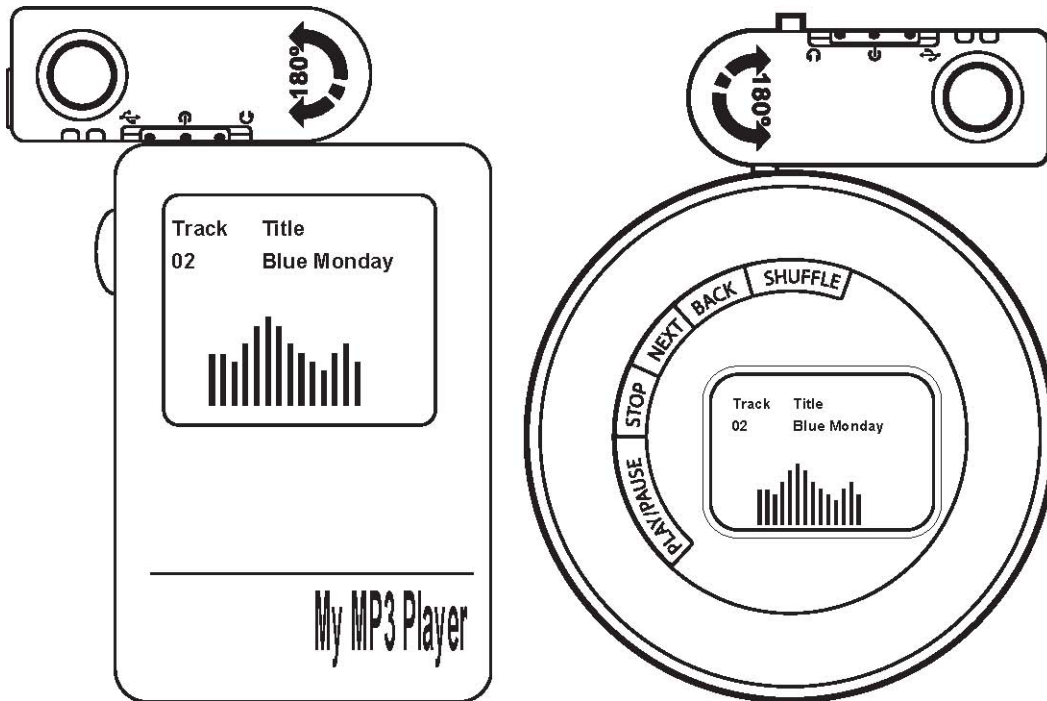
The audio transmitter is a stereo transmitter. You can connect it to any audio device such as a CD player, or MP3 player. You can also connect it to the audio out connector on your computer. Refer to the following to connect the transmitter to your audio device.

Set the mode switch on the transmitter to POWER.

Rotate the audio jack as required.



3. Plug the transmitter into the audio out connector on the device.



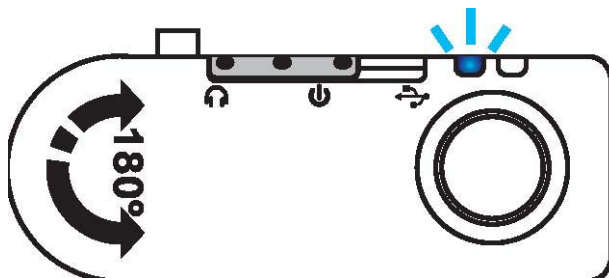
Pairing Devices

Connect the transmitter to an audio device, now you can pair the headset with the transmitter or with a Bluetooth-enabled phone.

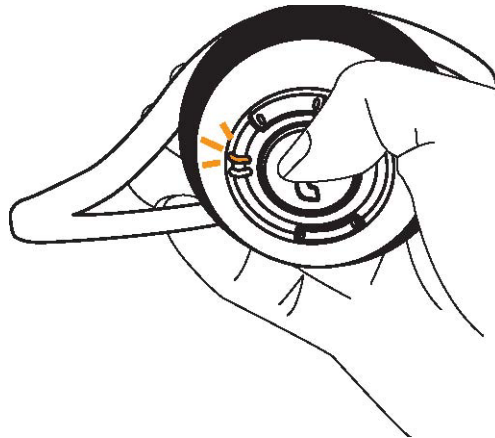
PAIRING THE HEADSET AND TRANSMITTER

Refer to the following to pair the headset and transmitter.

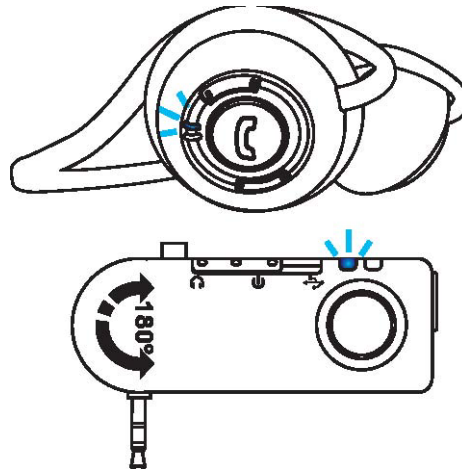
1. Connect the transmitter to your audio device. See "Connecting the Transmitter to an Audio Device" section on page 21.
2. Set the mode switch on the transmitter to Audio. The link LED flashes blue.



3. Press and hold the Pair/answer button on the headset until the link LED flashes yellow.



When the link LEDs on both devices flash blue, the devices are paired.



4. Put on your headset and enjoy the music. (See “Adjusting the Volume” on page 27.) (See “Skipping Tracks” on page 27.)



WHEN CONNECTED TO YOUR COMPUTER, THE SKIP FUNCTION ONLY WORKS WITH WINAMP™ AND WINDOWS MEDIA PLAYER™.

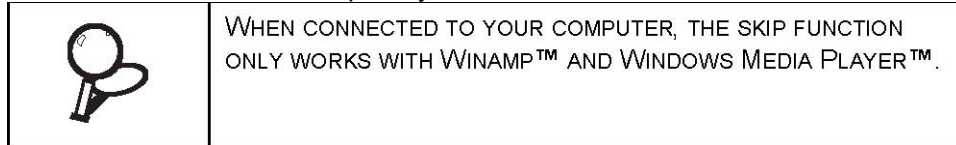
PAIRING THE HEADSET WITH THE IVT BLUESOLEIL PROGRAM

The IVT BlueSoleil program allows you to pair with many different Bluetooth devices such as cameras, mobile phones and headsets.



TO LISTEN TO MUSIC ON YOUR COMPUTER WITHOUT USING THE IVT BLUESOLEIL PROGRAM. CONNECT THE TRANSMITTER TO THE AUDIO-OUT (OR HEADSET) CONNECTOR ON YOUR COMPUTER. THEN PLAY THE MUSIC FILES YOU WANT TO HEAR IN WINAMP OR WINDOWS MEDIA PLAYER.

In order to connect and share services via Bluetooth wireless technology, the two devices must support the same Bluetooth Profile(s). One device must be act as a server; the other must be the client. Refer to the IVT BlueSoleil Help utility for more information.

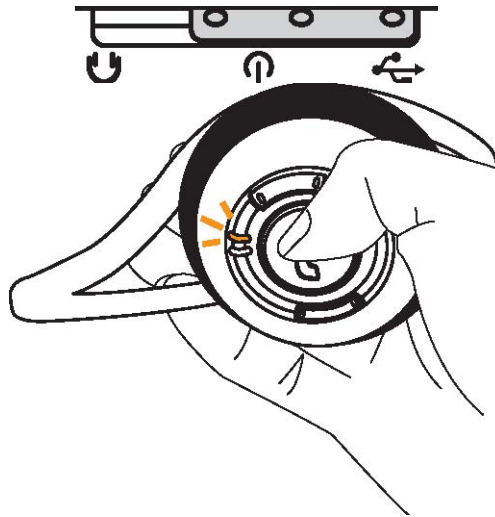


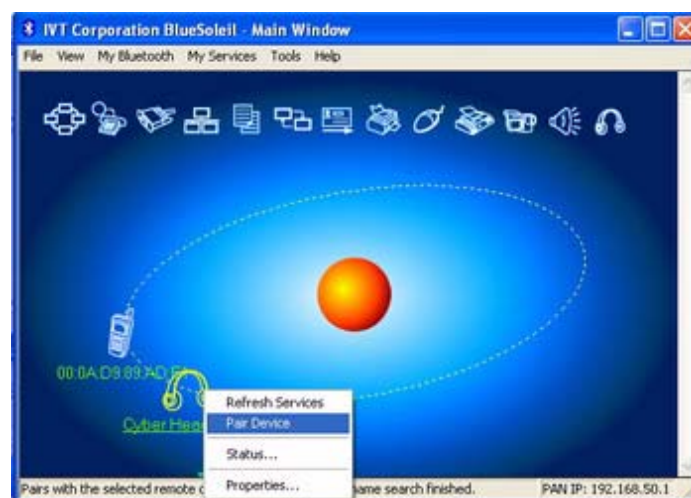
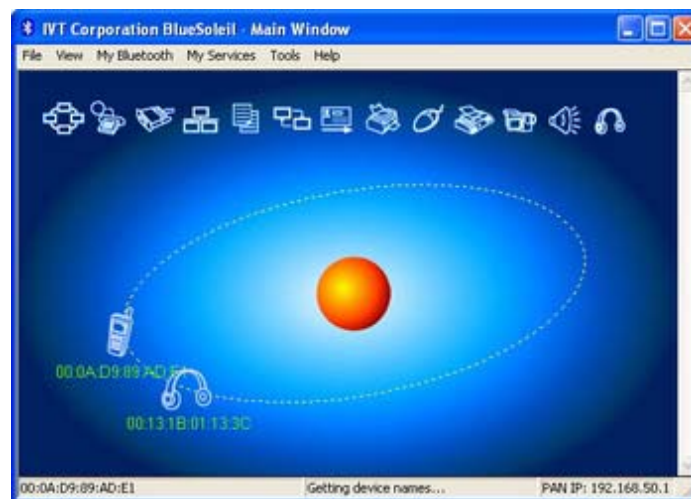
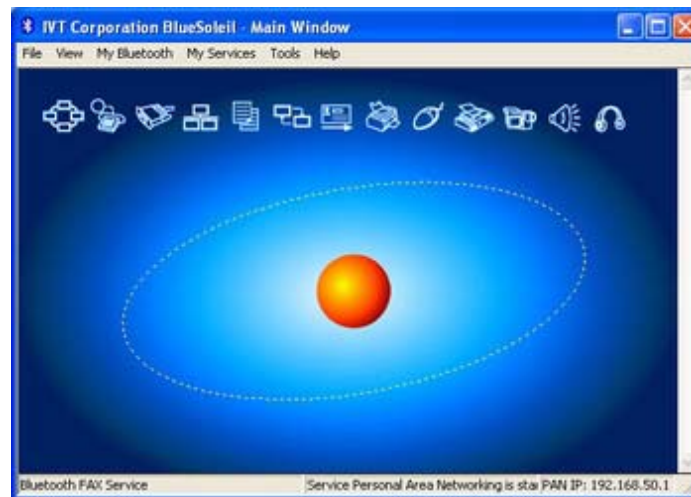
Note the following when pairing with devices:

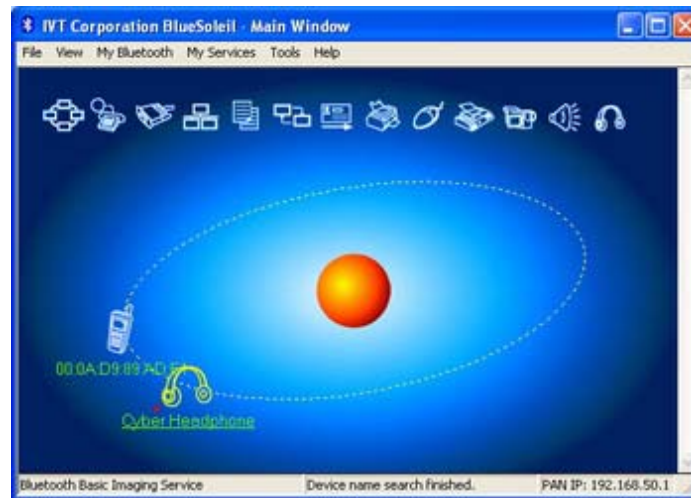
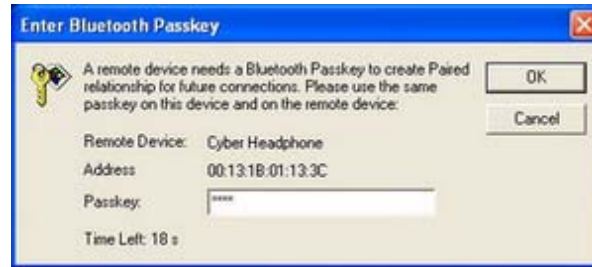
- The device must be turned on.
- The device must have sufficient battery power.
- Certain devices must be set to “discoverable” mode.

Refer to the following to pair your headset with your computer.

1. Connect the transmitter to a USB connector on your computer.
2. Set the Mode switch to USB.
3. Press and hold the Pair/answer button on the headset until the link LED flashes yellow.
4. Click **Start -> All Programs -> IVT BlueSoleil -> BlueSoleil** to open the IVT BlueSoleil program.
5. Click the red ball in the center of the Main Window to search for devices in range.
6. When your headset is detected the Cyber Headphone icon appears. (Other Bluetooth devices that are in range also appear.)
7. Right-click the **Cyber Headphone** icon and select **Pair Device**.
8. Type in the default passkey [0000] and click **OK**.
9. After sucessfull pairing two new services appear at the top-right of the Main Window.








USING THE HEADSET WITH YOUR COMPUTER

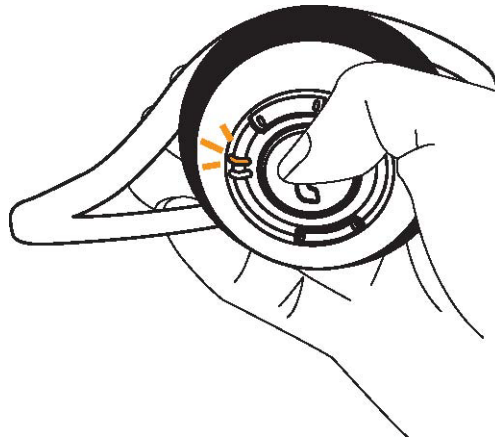
Once you have paired the headset with your computer, you can listen to music on your computer, or talk with friends using network meeting tools.

PAIRING WITH A BLUETOOTH ENABLED PHONE

Refer to the following to pair the headset with a Bluetooth enabled phone.


	<p>BLUETOOTH MUST BE ENABLED ON YOUR MOBILE PHONE TO USE THIS FUNCTION. REFER TO YOUR PHONE'S USER MANUAL FOR INSTRUCTIONS ON ENABLING BLUETOOTH.</p>
---	---

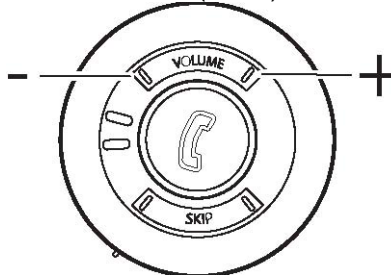
1. Press and hold **Pair/answer** on the headset until the link LED flashes yellow.
2. Scroll to Bluetooth in the menu of your phone and look for a setting such as active device.
3. Select **Cyber Headphone** when it appears in the phone menu.
4. When prompted, type in the default password **[0000]**.



ANSWERING CALLS

Refer to the following to answer a call.

1. When your phone rings, press **Pair/answer** () on the headset.



2. Adjust the volume as you want.
3. Press **Pair/answer** to end your call.

Headset Operation

Once you have paired with a device, operating the headset is easy. You can skip tracks and adjust the volume without removing the headset.

ADJUSTING THE VOLUME


Refer to the following to adjust the volume.

Press the left side of the volume button to decrease the volume.

Press the right side of the volume button to increase the volume.

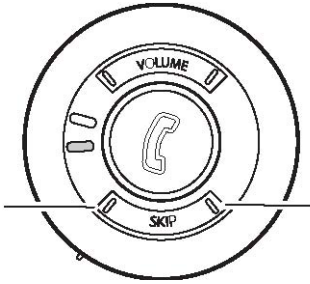
SKIPPING TRACKS

Refer to the following to skip tracks.

	<p>WHEN CONNECTED TO YOUR COMPUTER, THE SKIP FUNCTION ONLY WORKS WITH WINAMP AND WINDOWS MEDIA PLAYER.</p>
---	--

Press the left side of the skip button to go to the previous track.
Press the right side of the skip button to go to the next track.

Previous



Next

APPENDIX

Troubleshooting

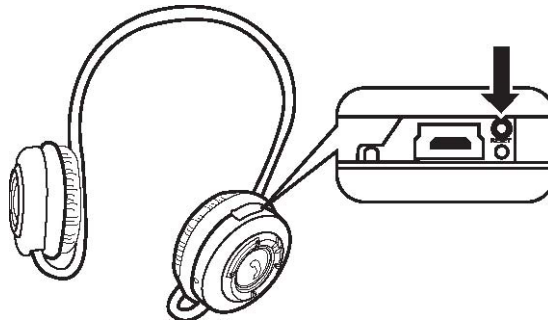
Try the following if the headset or transmitter do not work:

- Ensure connecting devices are charged.
- Unplug the transmitter from your computer and then connect it again.
- Turn off all devices and then turn them on again in the order shown in this guide.
- Ensure devices are within the 10-meter (33 feet) range.
- Ensure no obstructions such as concrete walls are between connecting devices.

If the devices are still not working after trying the above, pack the headset and transmitter in the original package and return the package to your reseller.

Resetting the Headset

If the headset hangs or does not respond, try resetting it. Open the cover of the USB connector and use a paper clip to press the reset button.



Headset and Transmitter LEDs Detailed Descriptions

HEADSET LED

Function	LED Status
Power on/off mode	Yellow quick flash interval 0.1s
Audio streaming mode	Blue slow flash interval 0.3s
Searching (pairing) channel	Yellow quick flash interval 0.1s
Connection mode	Blue slow flash interval 0.3s
Disconnection mode	Yellow Slow flash interval 0.3s
Idle mode	
Incoming-receiving mode	1. Blue quick flash interval 0.1s 2. Yellow quick flash interval 0.1s
Incoming-talking mode	Blue slow flash interval 0.3s
Outgoing-dialing mode	
Outgoing-talking mode	
Charging mode	Red LED on
Charging full mode	Green LED on

USB CONNECTOR

Function	LED Status
Power on to USB connection	No LED on
Pairing mode	Yellow LED on
Idle mode	Yellow quick flash
Connection mode	Yellow LED on
Charging mode	Red LED on
Charging full mode	Green LED on

AUDIO JACK

Function	LED Status
Power on to audio jack	Blue slow flash interval 0.1s
Pairing mode	Blue quick flash interval 0.1s
Idle mode	No LED ON
Connection mode	Blue quick flash interval 0.35s
Charging mode	Red LED on
Charging full mode	Green LED on

Available Services

You connect the transmitter to your computer through a USB connector, or to an audio out (headset) connector. The services available for each connection are shown below.

AUDIO CONNECTION

	Skype	Music	Mobile phone
Skype (headset)	—	Music and Skype voice, but no microphone	Skype stopped, transfer to mobile phone
	Music and Skype		Skype stopped,

Music (A2DP)	voice, but no microphone	—	transfer to mobile phone
Mobile phone (talking/standby)	Not available	Not available	—
Mobile phone (standby)	Available	Available	Available

USB CONNECTION WITH IVT BLUESOLEIL

	Skype	Music	Mobile phone
Skype (headset)	—	Mixed mono music and Skype voice	Not available
Music (A2DP)	You can hear ring tone, but you can not answer	—	Music suspends and transfers to phone. When call ended, music resumes.
Mobile phone (talking)	Not available	Not available	—
Mobile phone (standby)	Available	Available	Available

Specifications TRANSMITTER HEADSET

General Radio	Bluetooth Class 2, up to 5 ~ 10 meters (open space) Operating range depends on paired phone model, battery power, and environmental factors.
Carrier Frequency:	2.402~2.480 GHZ
Data Rate:	1 Mbps
Spread Spectrum	FHSS (Frequency Hopping Spread Spectrum)
Modulation Method	GFSK (Gaussian Frequency Shift Keying)
Multi-transfers	Maximum five different Bluetooth enabled devices (Non A2DP profile)
Auto-switching	While listening to music, you can receive or make a phone call with a paired mobile phone.
S/N Ratio	> 88 dB
Audio Format	SBC
Sensitivity	< 0.1% BER at -85 dBm
RF Output Power (Class 2)	0±4 dBm
Power Consumption	Tx Typical: 63mA Rx Typical: 68mA
Input Power	5V 500mA, AC adapter USB cable connected to computer

Weight	22 grams
Dimensions (L x W x H)	67 mm x 26 mm x 15 mm
Built-in Battery	3.7V / 370mAh / Li-Polymer, rechargeable
Battery Life	Up to 5.5 hours (factors such as distance between devices, and type of mobile phone used increase power consumption).
Dynamic Power Management	Automatic power consumption control
Operating Temperature	0 to 60 degrees centigrade
Operating Humidity	0 to 95% (non-condensing)

General Radio	Bluetooth Class 2, up to 5~10 meters (open space) Operating range depends on paired phone model, battery power, and environmental factors.
Carrier Frequency	2.402~2.480GHZ
Data Rate	1 Mbps
Spread Spectrum	FHSS (Frequency Hopping Spread Spectrum)
Modulation Method	GFSK (Gaussian Frequency Shift Keying)
Auto-switching	While listening to music, you can receive or make a phone call with a paired mobile phone.
S/N Ratio	> 88 dB
Interface	30 mm stereo speaker
Audio Format	SBC
Sensitivity	< 0.1% BER at -85 dBm
RF Output Power (Class 2)	0±4 dBm
Power Consumption	Tx Typical: 63mA Rx Typical: 68mA
Input Power	5V 500mA, AC adapter
Listening/talking Time	Up to 7 hours (factors such as distance between devices, and type of mobile phone used increase power consumption).
Dimensions (D x H)	54 mm x 25 mm
Weight	80 grams
I/O port	Charging: Mini-B USB Jack power adapter
Microphone	Built-in microphone for mobile phone use
Built-in Battery	3.7V / 500mAh / Li-Polymer rechargeable
Battery Life	Up to 7 hours
Dynamic Power Management	Automatically Power control for power consumption
Operating Temperature	0 to 60C
Operating Humidity	0 to 95% (non-condensing)

