



## Upgrade procedure for WAB-2000

### Firmware Version 3.x → 4.x

Digital Data Communications Asia Co., Ltd.

8F, No. 41, Lane 221, Gang-Chi Rd, Nei-Hu Dis., 114, Taipei, Taiwan

[Http://www.digital-data.de](http://www.digital-data.de) ; [Http://www.level1.com](http://www.level1.com)



Step 1: Login to the web management from the WAB-2000's WAN port.

Ex: **https://192.168.254.254**

WAB-2000 - Microsoft Internet Explorer

File Edit View Favorites Tools Help

Back Forward Stop Reload Home Search Favorites RSS Print Mail

Address <https://192.168.254.254/>

WAB-2000 Wireless AP+Bridge

Version 3.2 Build 9.8

Username:

Password:



## Upgrade procedure for WAB-2000 Firmwae Version 3.x → 4.x

Digital Data Communications Asia Co., Ltd.

8F, No. 41, Lane 221, Gang-Chi Rd, Nei-Hu Dis., 114, Taipei, Taiwan

[Http://www.digital-data.de](http://www.digital-data.de) ; [Http://www.level1.com](http://www.level1.com)



Step 2: In System upgrade page.

Select boot code file “redboot.3.23.1.flash.bin”

WAB-2000 - Microsoft Internet Explorer

File Edit View Favorites Tools Help

Address <https://192.168.254.254/cgi-bin/gateway?PG=70> Go

**level<sup>®</sup> one**

**Wireless AP+Bridge** [Log Out](#)

Operation Mode: Wireless AP/Bridge Mode

Username: crypto Host Name: default (192.168.254.254)

Role: Crypto Officer

**System Administration -> System Upgrade**

[Firmware Upgrade](#) [Local Configuration Upgrade](#)

Click 'Browse' and select a file:

[Browse...](#)

[Upload Firmware](#)

**System Configuration**

- General
- WAN
- LAN

**Wireless Access Point**

- General
- Security
- MAC Address Filtering
- Rogue AP Detection
- Advanced

**Wireless Bridge**

- General
- Encryption

**Services Settings**

- DHCP Server
- SNMP Agent

**User Management**

- List All Users
- Add New User

**Monitoring/Reports**

- System Status
- Bridging Status
- Bridging Site Map
- Wireless Clients
- Adjacent AP List
- DHCP Client List
- System Log
- Web Access Log

**System Administration**

- System Upgrade**
- Factory Default
- Remote Logging
- Reboot
- Utilities



## Upgrade procedure for WAB-2000

### Firmwae Version 3.x → 4.x

Digital Data Communications Asia Co., Ltd.

8F, No. 41, Lane 221, Gang-Chi Rd, Nei-Hu Dis., 114, Taipei, Taiwan

[Http://www.digital-data.de](http://www.digital-data.de) ; [Http://www.level1.com](http://www.level1.com)



Step 3: Upload “redboot.3.23.1.flash.bin” to the WAB-2000.

After upgrade, the WAB-2000 will reboot and take itself back to be in Factory Default.

## Upgrade procedure for WAB-2000 Firmwae Version 3.x → 4.x

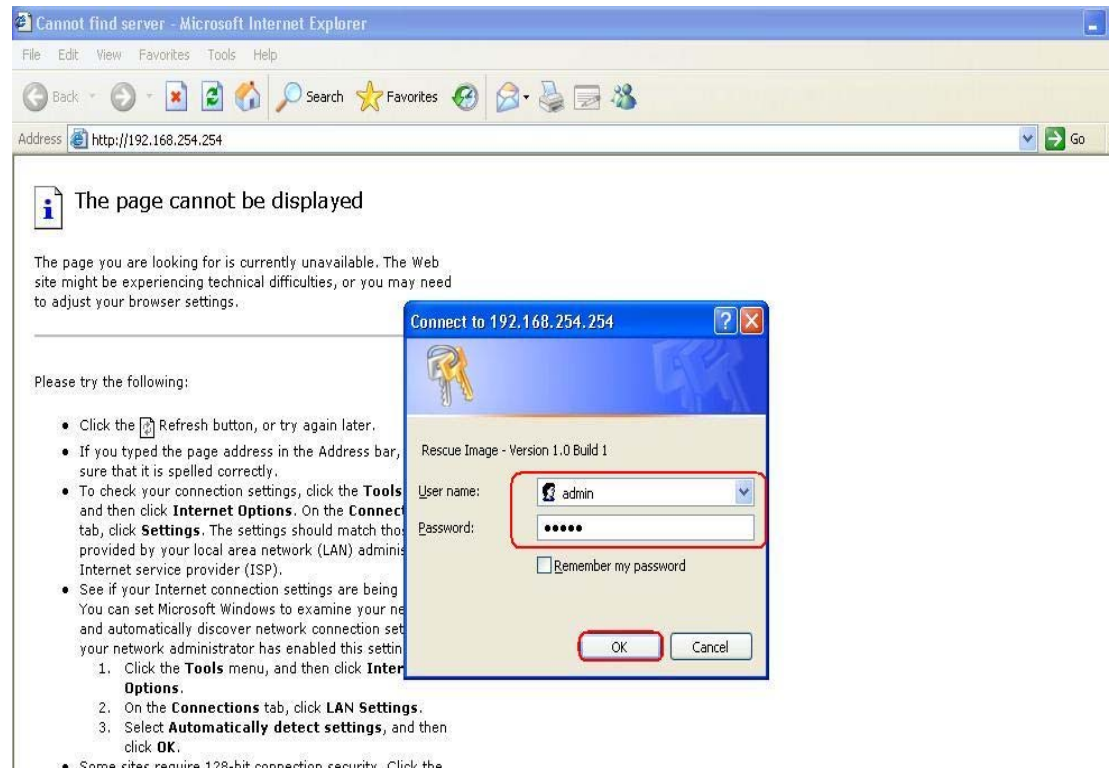
Digital Data Communications Asia Co., Ltd.

8F, No. 41, Lane 221, Gang-Chi Rd, Nei-Hu Dis., 114, Taipei, Taiwan

[Http://www.digital-data.de](http://www.digital-data.de) ; [Http://www.level1.com](http://www.level1.com)



Step 4: After the WAB-2000 is done with the “rebooting” that please access <http://192.168.254.254> instead of the default page as <https://192.168.254.254> and the username and password will become as admin/admin.





## Upgrade procedure for WAB-2000

### Firmwae Version 3.x → 4.x

Digital Data Communications Asia Co., Ltd.

8F, No. 41, Lane 221, Gang-Chi Rd, Nei-Hu Dis., 114, Taipei, Taiwan

[Http://www.digital-data.de](http://www.digital-data.de) ; [Http://www.level1.com](http://www.level1.com)



Step 5: In system upgrade, select firmware file “WAB-2000\_4.1.2.20.bin” and then press “upload firmware” button.

Configuration - Microsoft Internet Explorer

File Edit View Favorites Tools Help

Back Forward Stop Home Search Favorites Refresh Print Mail New Window

Address <http://192.168.254.254/cgi-bin/sgateway>

**Rescue Image - Version 1.0 Build 3**

**System Administration**

- Change Password
- System Upgrade
- Factory Default
- Reboot

**System Administration -> System Upgrade**

Click 'Browse' and select a file:

sktop\4.1.2.8 firmware\WAB-2000\_4.1.2.8.bin



## Upgrade procedure for WAB-2000 Firmware Version 3.x → 4.x

Digital Data Communications Asia Co., Ltd.

8F, No. 41, Lane 221, Gang-Chi Rd, Nei-Hu Dis., 114, Taipei, Taiwan

[Http://www.digital-data.de](http://www.digital-data.de) ; [Http://www.level1.com](http://www.level1.com)



Step 6: After step 5, WAB-2000 will reboot automatically.

Please use “ping 192.168.254.254” to make sure whether the WAB-2000 is ready. Go to Step 7 if the WAB-2000 does reply your “ping” well.

```
C:\WINDOWS\system32\CMD.exe
Microsoft Windows XP [Version 5.1.2600]
(C) Copyright 1985-2001 Microsoft Corp.

C:\Documents and Settings\ccd>ping 192.168.254.254 -t

Pinging 192.168.254.254 with 32 bytes of data:

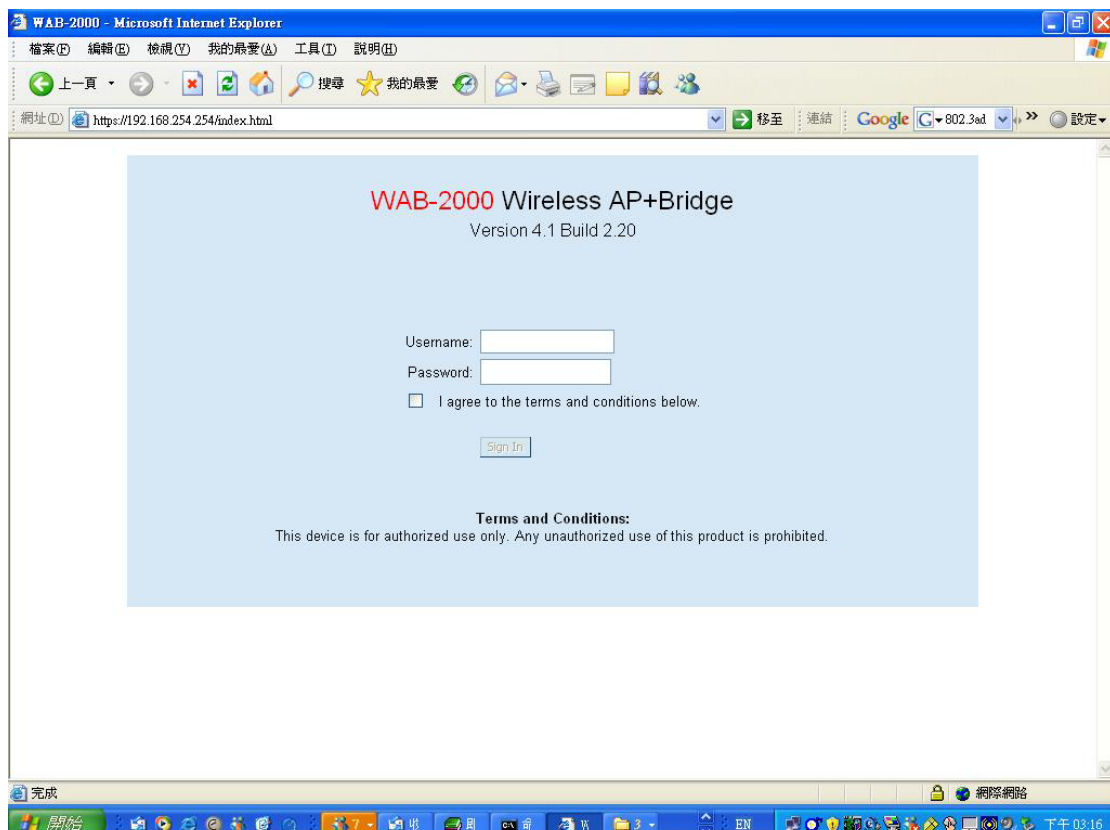
Reply from 192.168.254.254: bytes=32 time<1ms TTL=255
Reply from 192.168.254.254: bytes=32 time<1ms TTL=255
Reply from 192.168.254.254: bytes=32 time<1ms TTL=255
Reply from 192.168.254.254: bytes=32 time<1ms TTL=255
Reply from 192.168.254.254: bytes=32 time<1ms TTL=255
Reply from 192.168.254.254: bytes=32 time<1ms TTL=255
Reply from 192.168.254.254: bytes=32 time<1ms TTL=255
Reply from 192.168.254.254: bytes=32 time<1ms TTL=255
Reply from 192.168.254.254: bytes=32 time<1ms TTL=255

Ping statistics for 192.168.254.254:
    Packets: Sent = 9, Received = 9, Lost = 0 (0% loss),
    Approximate round trip times in milli-seconds:
        Minimum = 0ms, Maximum = 0ms, Average = 0ms
Control-C
^C
C:\Documents and Settings\ccd>_
```

Step 7: Login to the web management by <https://192.168.254.254>

The firmware is 4.1 Build 2.20 now.

The username and password will be crypto/officer





## Upgrade procedure for WAB-2000 Firmwae Version 3.x → 4.x

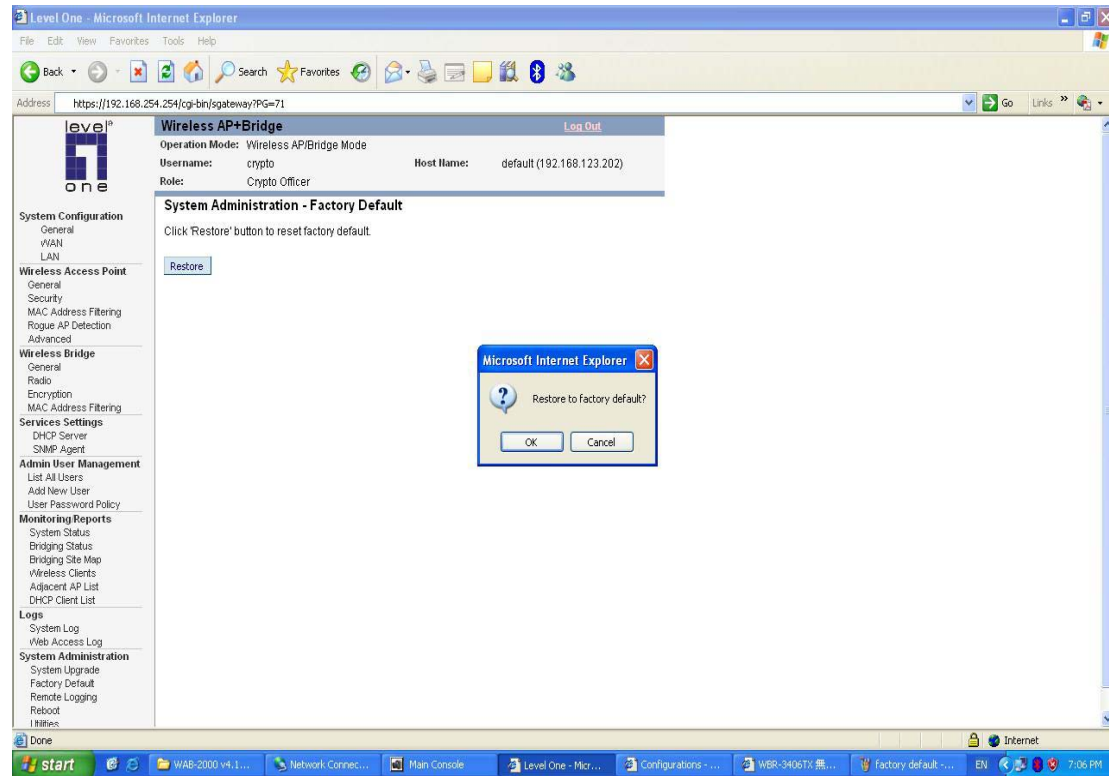
Digital Data Communications Asia Co., Ltd.

8F, No. 41, Lane 221, Gang-Chi Rd, Nei-Hu Dis., 114, Taipei, Taiwan

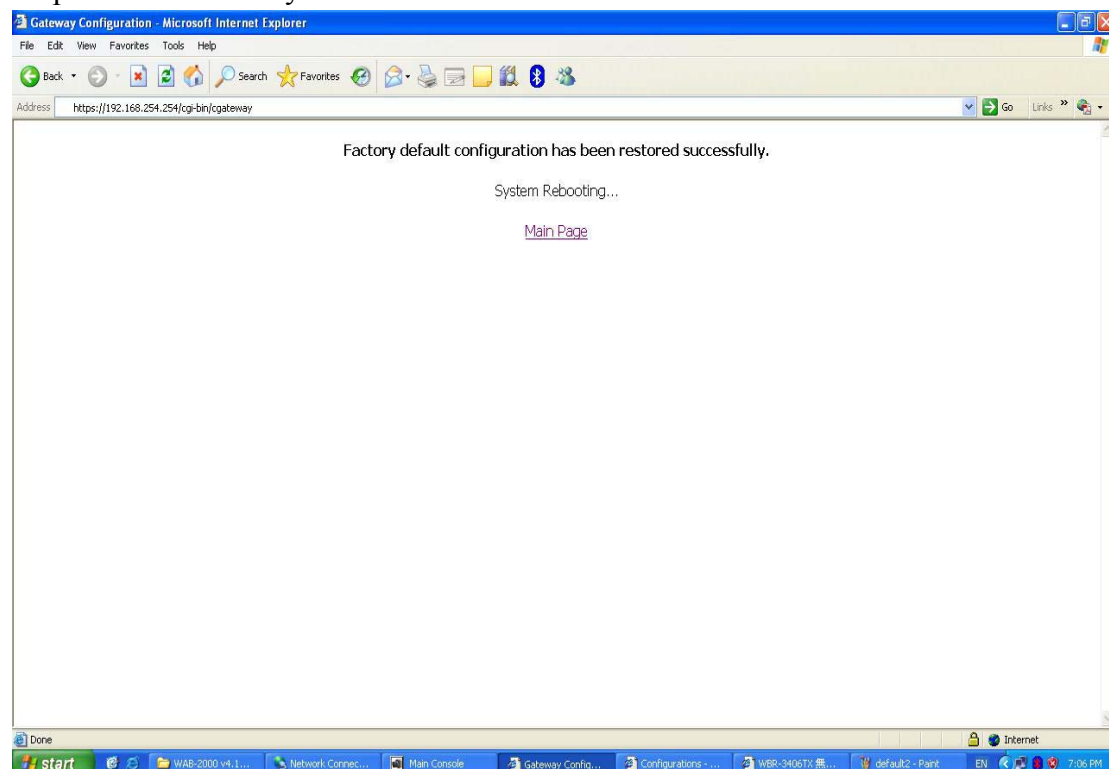
[Http://www.digital-data.de](http://www.digital-data.de) ; [Http://www.level1.com](http://www.level1.com)



Step 8: Get in the web management and reset the WAB-2000 to be in Factory Default manually.



Step 9: “Reset Factory Default” is done







## Upgrade procedure for WAB-2000

### Firmwae Version 3.x → 4.x

Digital Data Communications Asia Co., Ltd.

8F, No. 41, Lane 221, Gang-Chi Rd, Nei-Hu Dis., 114, Taipei, Taiwan

[Http://www.digital-data.de](http://www.digital-data.de) ; [Http://www.level1.com](http://www.level1.com)



Step 10: Go back to the main page and the job is done.

