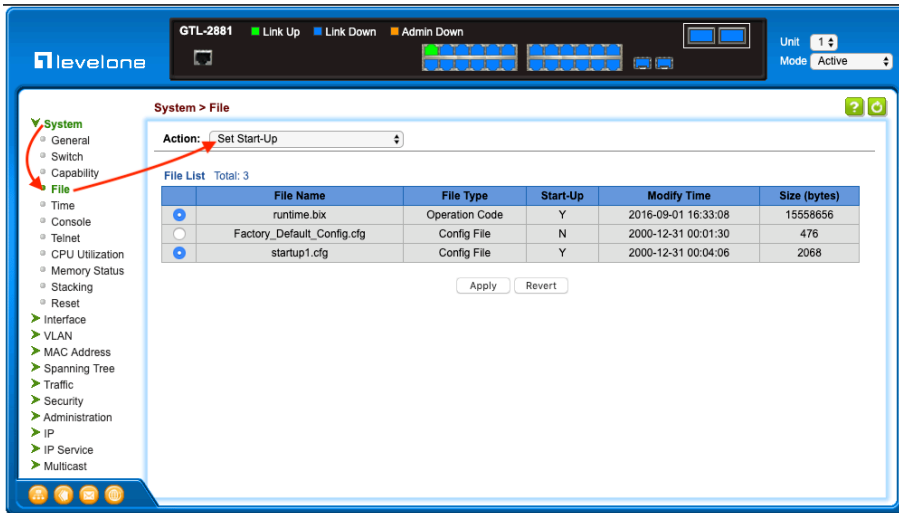


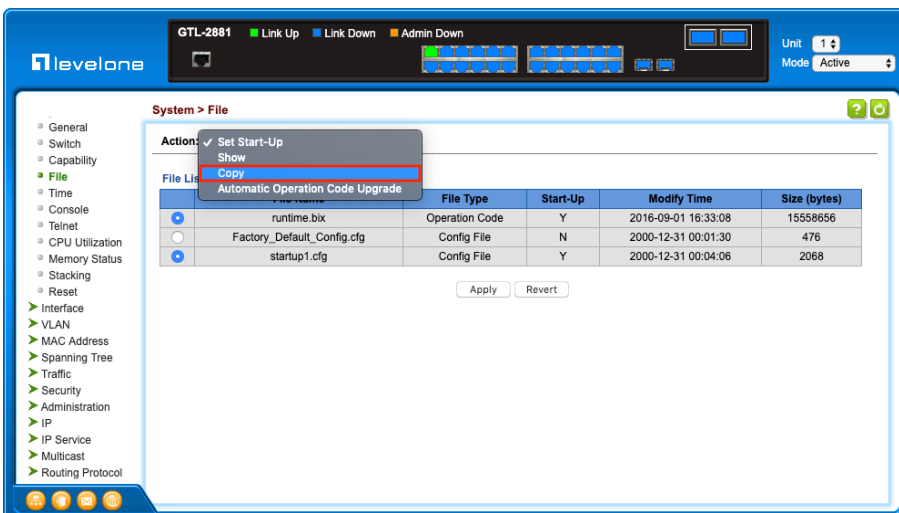
How to update Firmware

Please refer to how to update Operation Code Version: 1.5.2.42 (for GTL-2881/ GTL-2882/ GTP-5281 Hardware version: 1)

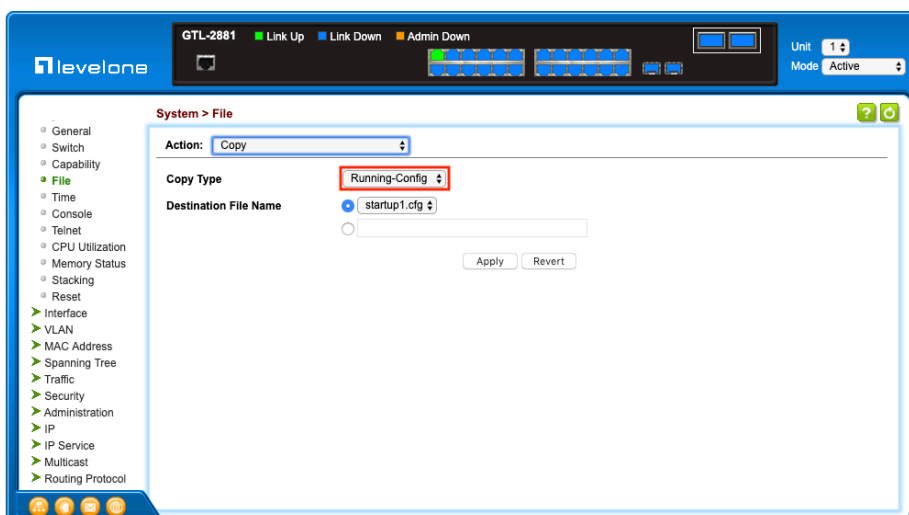
1. System >> File >> Action:



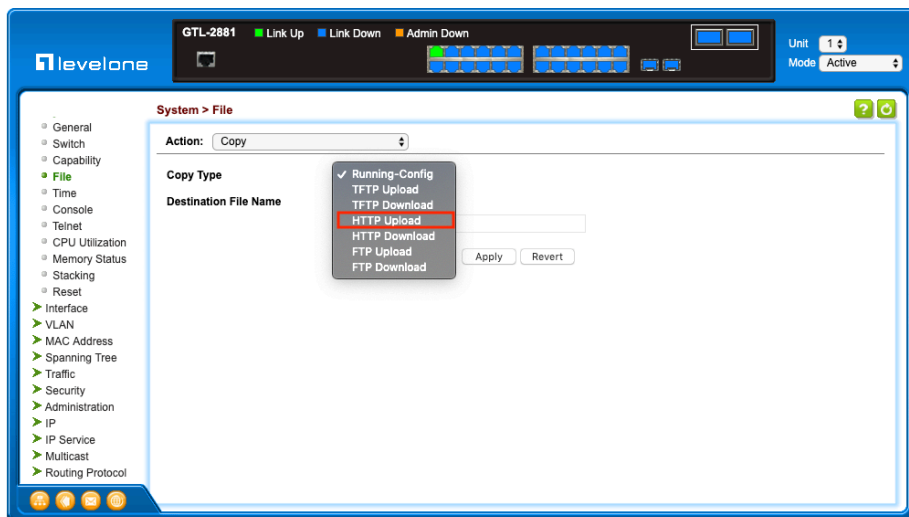
2. Click to Action: Copy



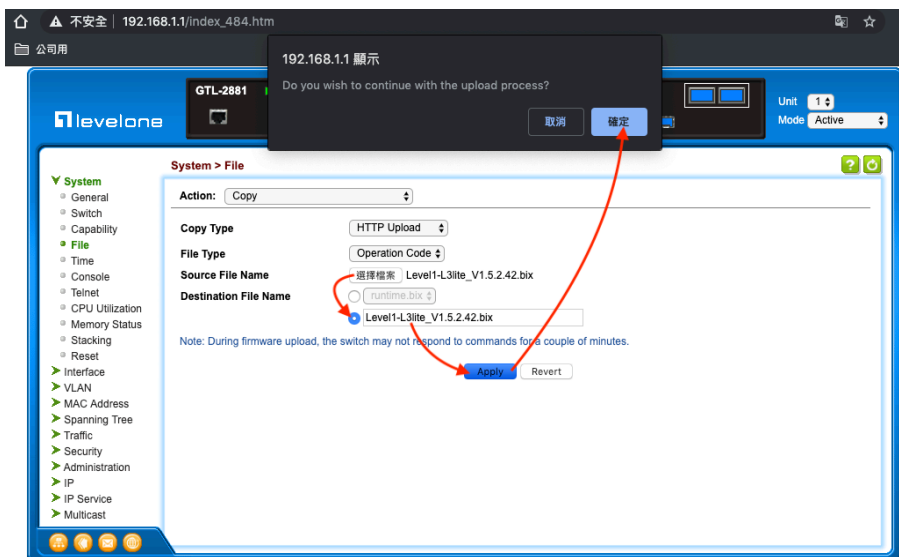
3. Click to Running-Config



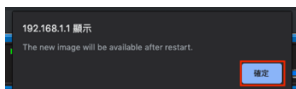
4. Select to HTTP Upload



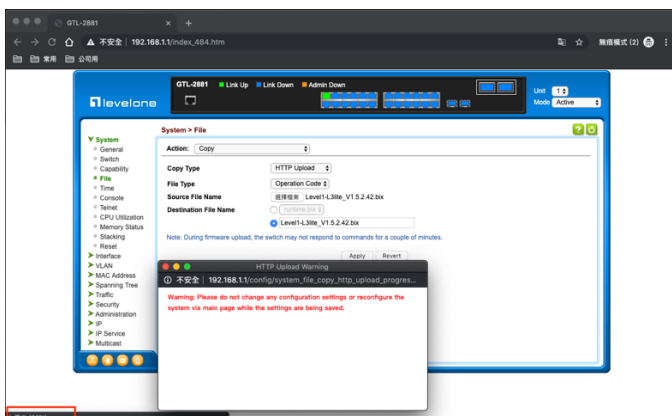
5. firmware upload



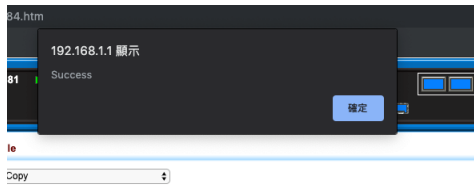
6. Click to ok



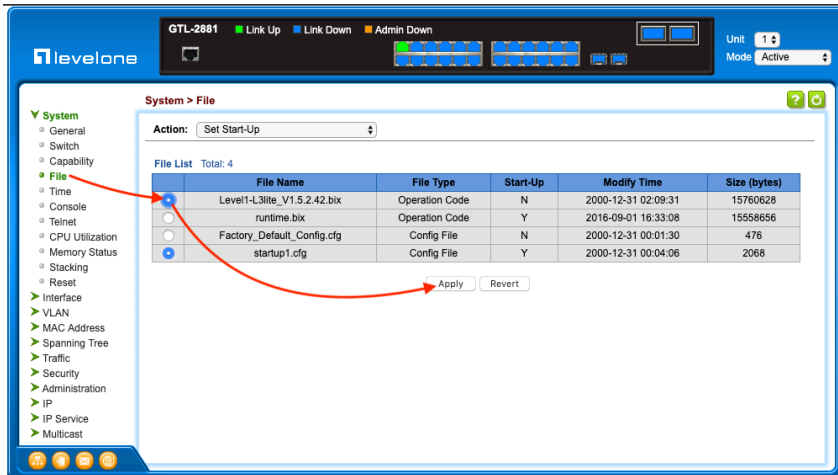
7. During firmware upload, the switch may not respond to commands for a couple of minutes. Check the upload progress



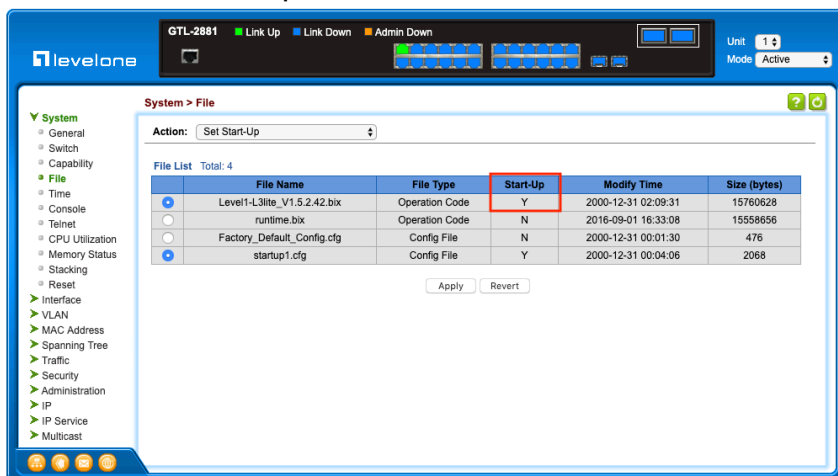
8. Click to ok



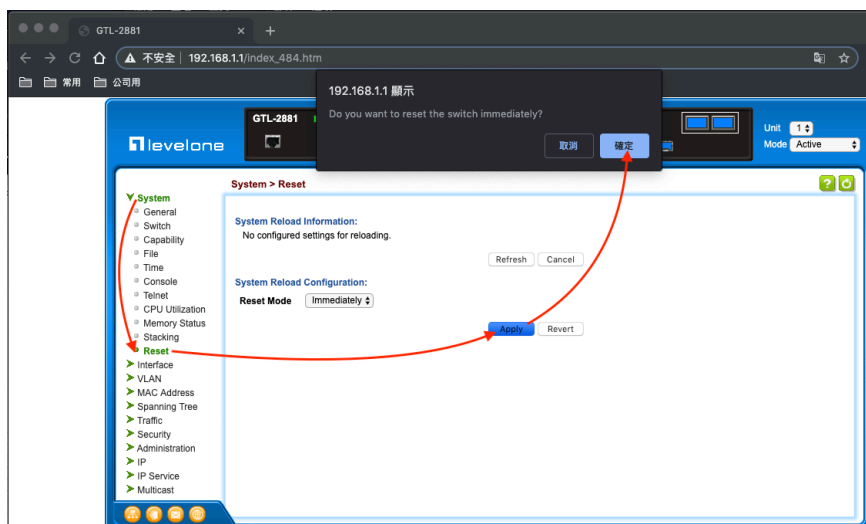
9. Remember to set start-up, Click to apply



10. Check if Start-Up shows Y



11. reload the switch.



12. Check if there is an update to Operation Code Version: 1.5.2.42

The screenshot displays the LevelOne GTL-2881 switch management interface. The top status bar shows the device name 'GTL-2881' and link status indicators: Link Up (green), Link Down (blue), and Admin Down (orange). The main menu on the left includes System, Interface, VLAN, MAC Address, Spanning Tree, Traffic, Security, Administration, IP, IP Service, and Multicast. The 'System > Switch' page is active, showing Main Board Information and Management Software Information. The 'Operation Code Version' is highlighted with a red box, showing the value 1.5.2.42. Below this, a Temperature List table shows a single entry for Thermal Detector 1 with a temperature of 46°C.

System > Switch

Main Board Information

Serial Number	00116BC5F0F5
Number of Ports	28
Hardware Version	R01
Main Power Status	Up
Redundant Power Status	Not present

Management Software Information

Role	Master
EPLD Version	R00 V0.0B
Loader Version	0.6.2.2
Diagnostics Code Version	0.0.0.1
Operation Code Version	1.5.2.42

Temperature List Total: 1

Thermal Detector	Temperature (°C)
1	46