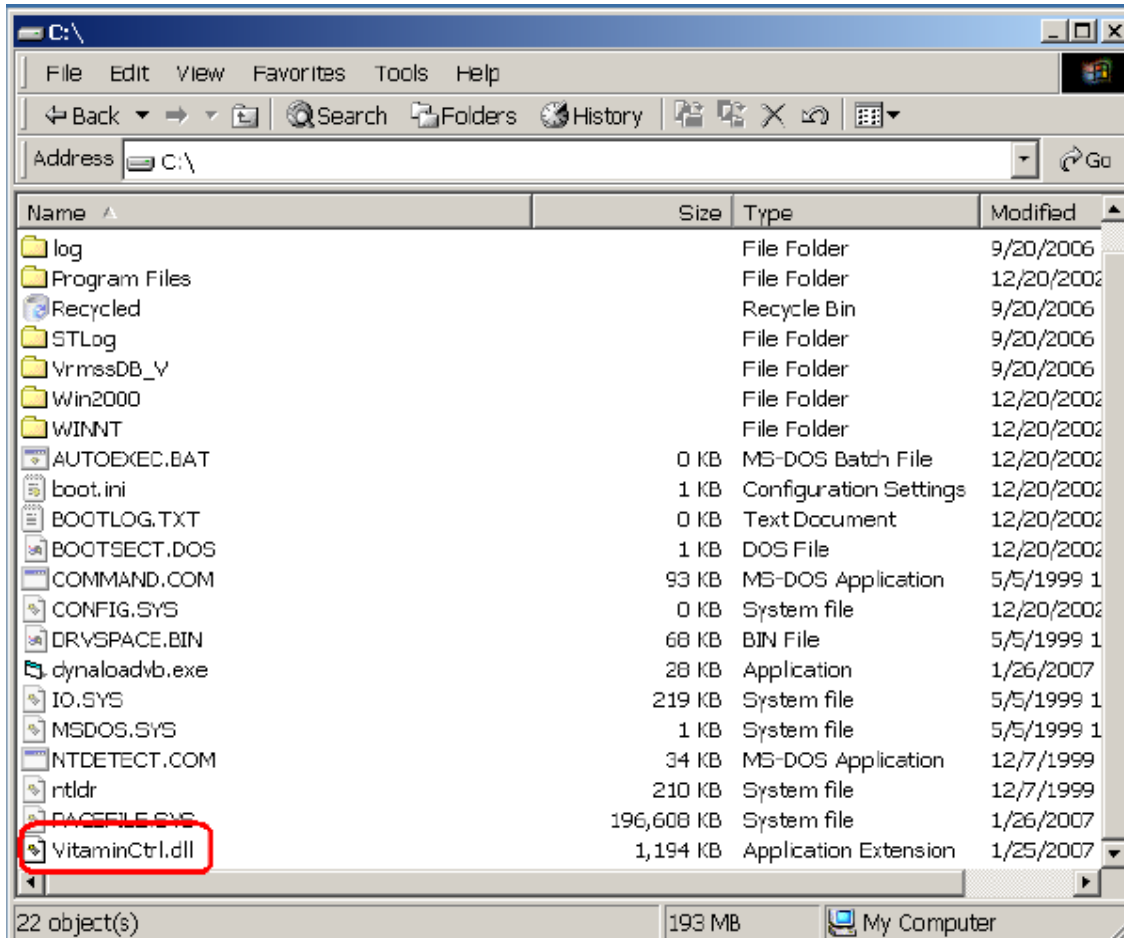


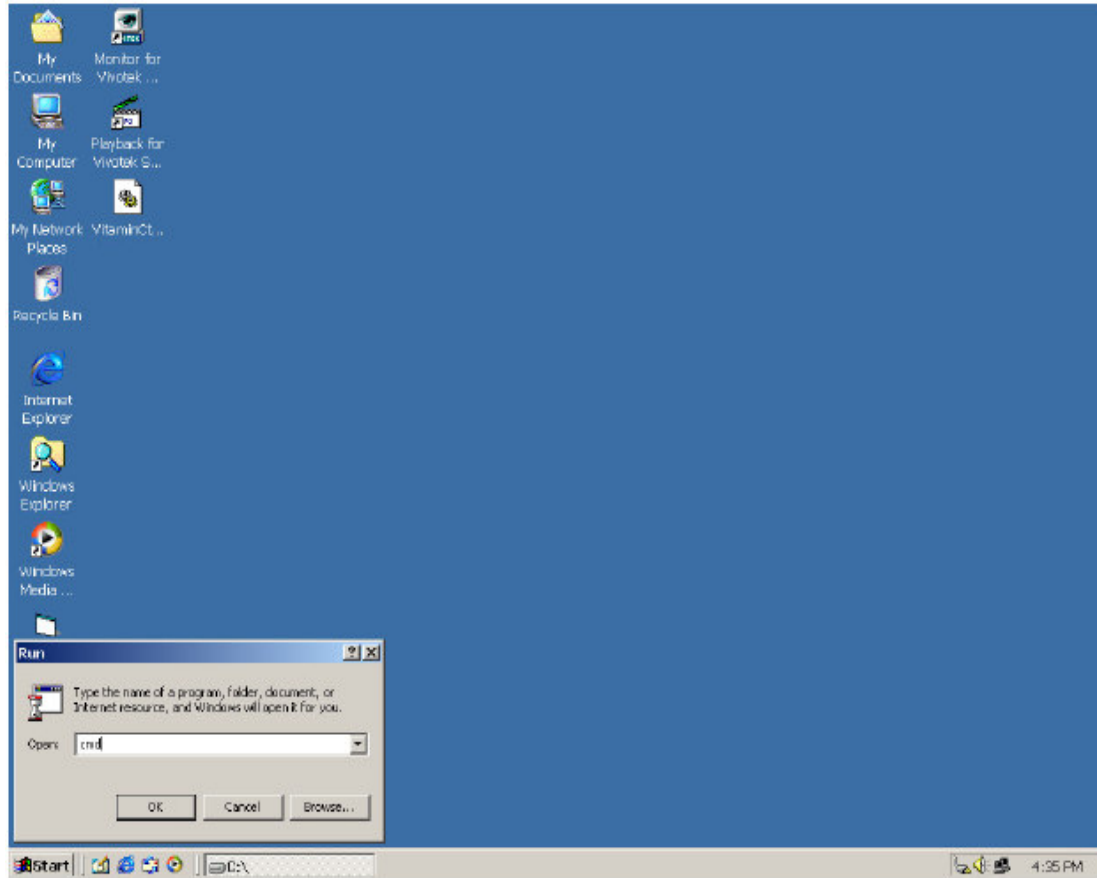
Install

There are two programs inside the folder. One is “Calculator.exe and another is “VitaminCtrl.dll”. The VitaminCtrl.dll is the program, which needs to be installed first before you user the Calculator. Please follow the steps for installing:

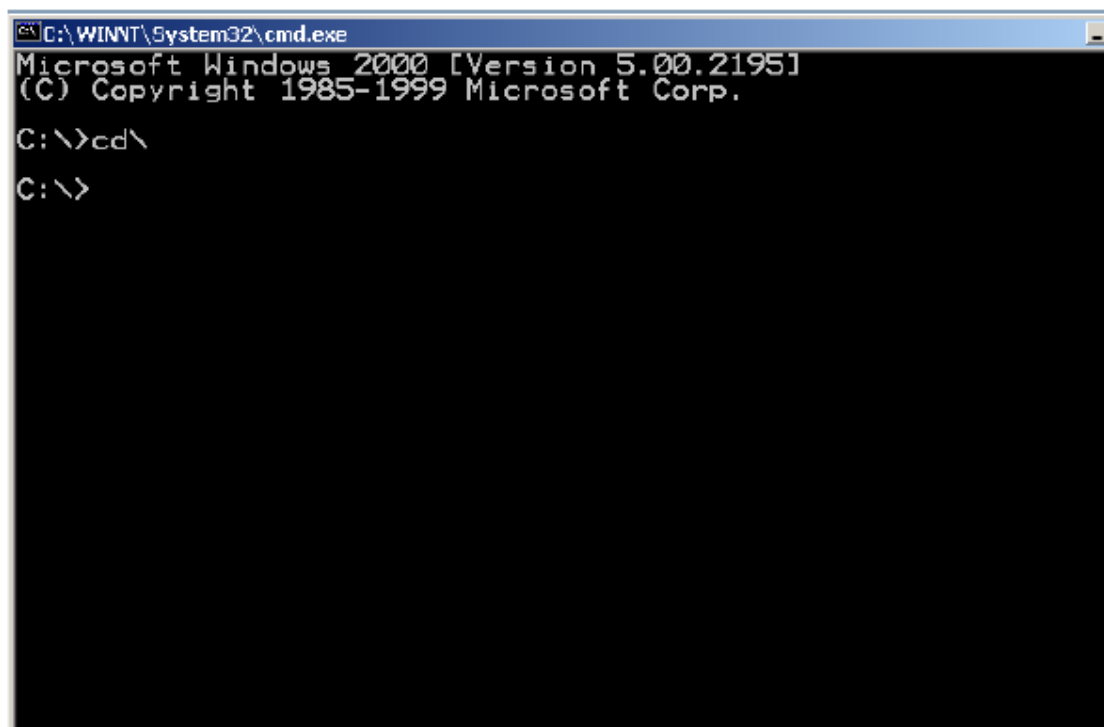
(1) Make a copy of “VitaminCtrl.dll” in your disk. The recommended path is C:\



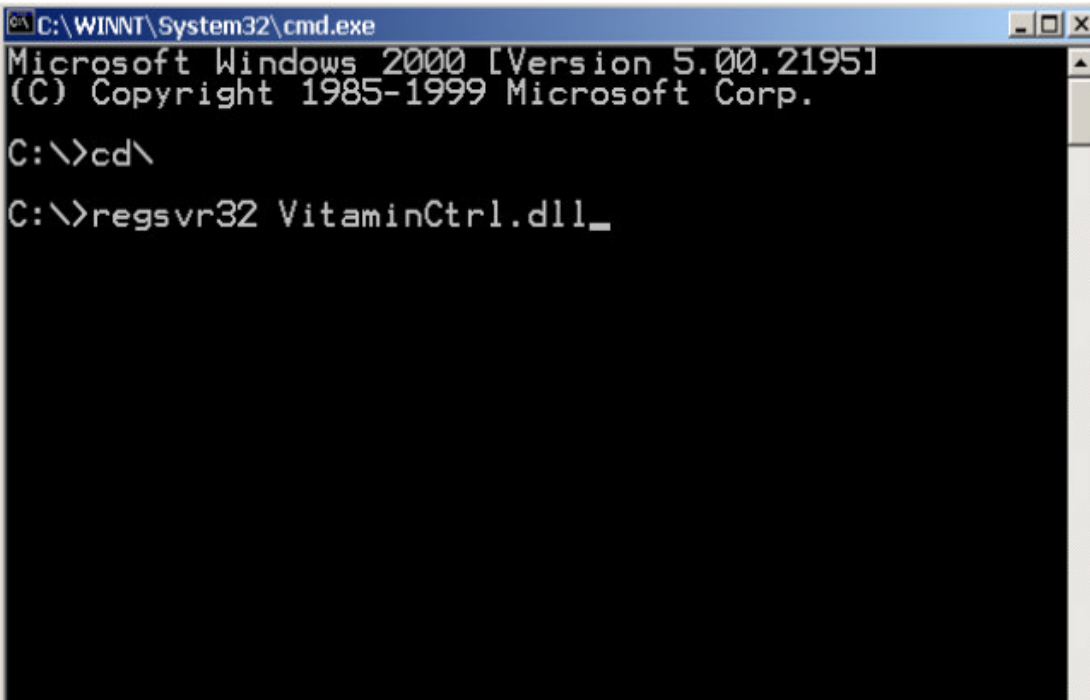
(2) Click Start → Run → Type “cmd” and then click “OK” button



(3) Set path as C:\



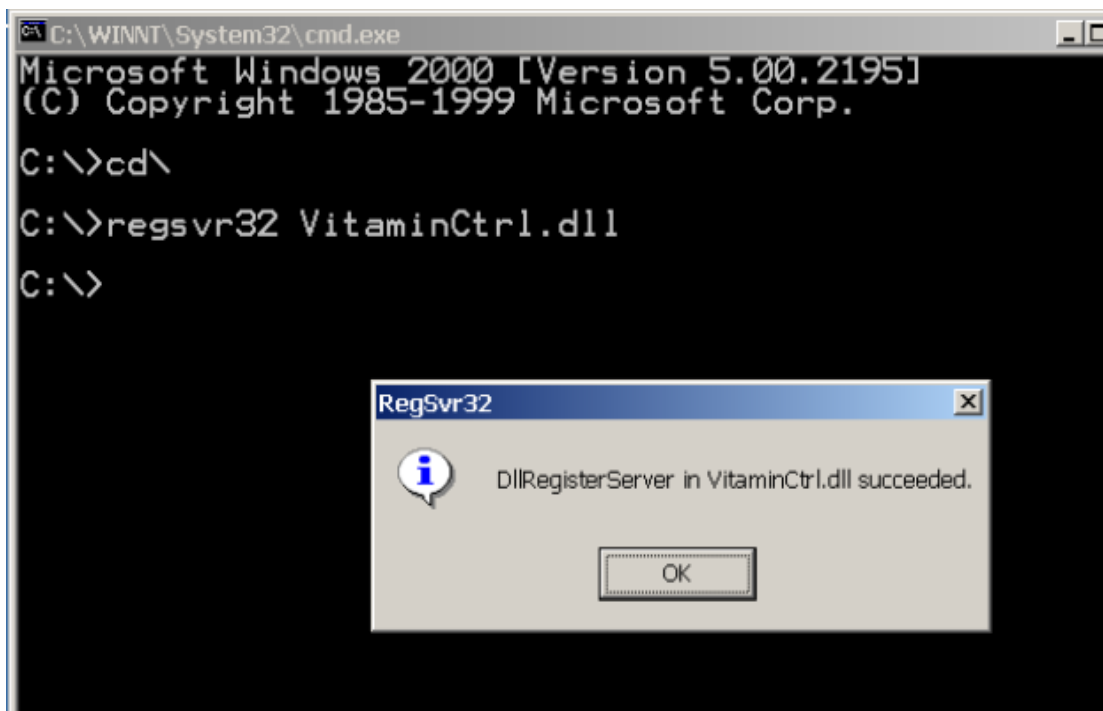
(4) Input “*regsvr32 VitaminCtrl.dll*”, then press enter



```
C:\WINNT\System32\cmd.exe
Microsoft Windows 2000 [Version 5.00.2195]
(C) Copyright 1985-1999 Microsoft Corp.

C:\>cd\
C:\>regsvr32 VitaminCtrl.dll_
```

(5) The message of successful register shows up. The installation is done.

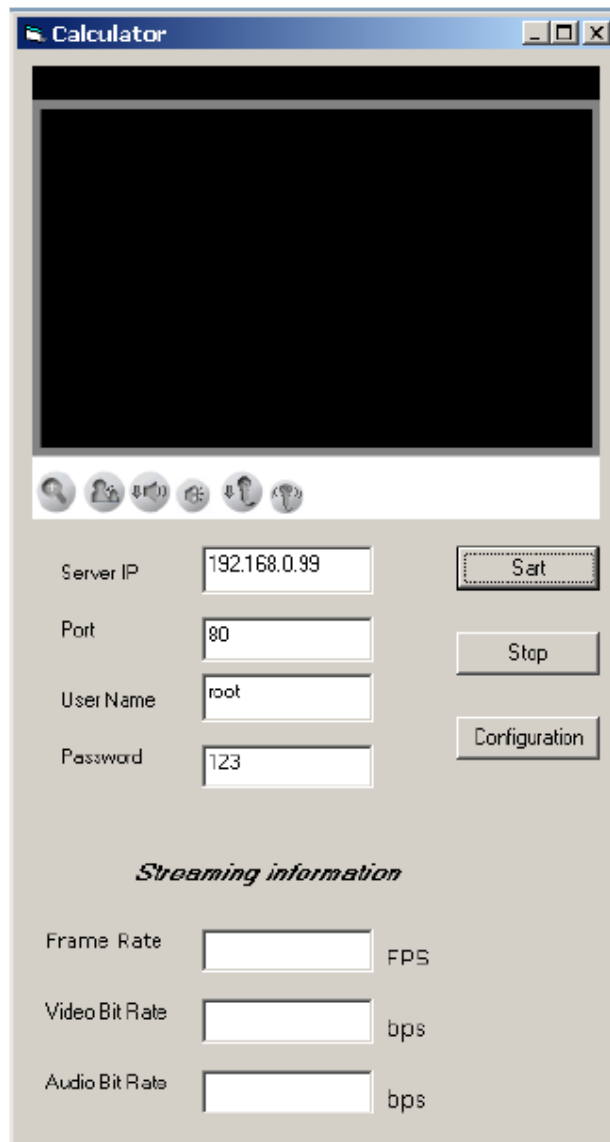


Starting

Starting the program by double click “Calcualtor.exe”.

Step1: Input Server IP, Port, User name and Passowrd.

Step2: Press “Start” button for connction.



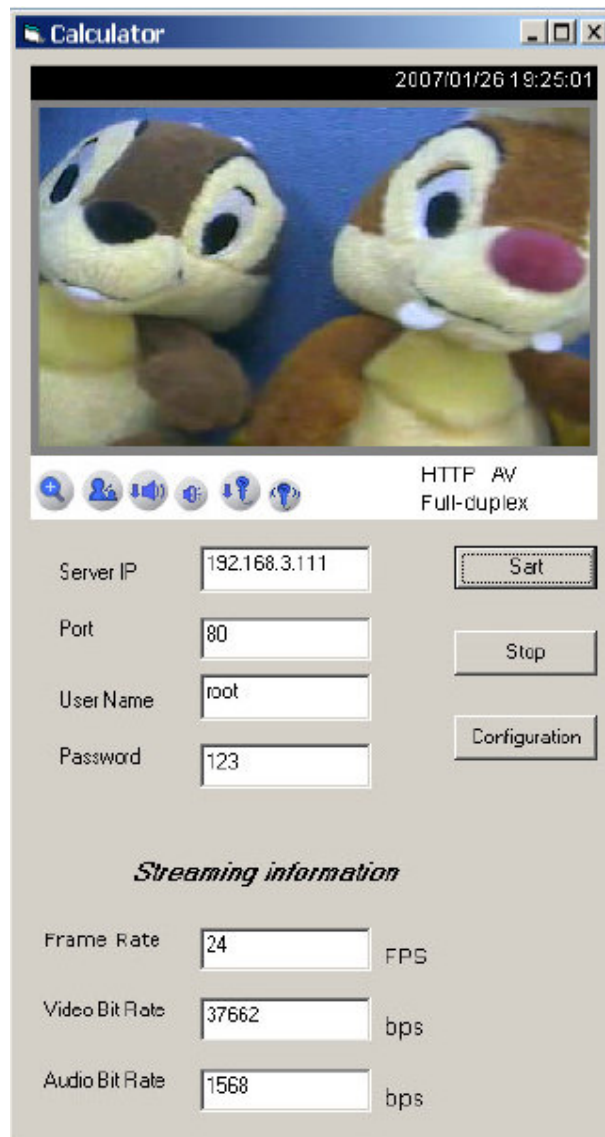
The screenshot shows a window titled "Calculator" with a standard Windows XP-style title bar. The main area is a large black rectangle. Below this, there is a row of six small circular icons. The interface then contains four input fields for configuration: "Server IP" (192.168.0.99), "Port" (80), "User Name" (root), and "Password" (123). To the right of these fields are three buttons: "Start", "Stop", and "Configuration". Below the configuration section, the text "Streaming information" is displayed in a bold, italicized font. Underneath, there are three rows of output fields: "Frame Rate" (empty) followed by "FPS", "Video Bit Rate" (empty) followed by "bps", and "Audio Bit Rate" (empty) followed by "bps".

Server IP	192.168.0.99	Start
Port	80	Stop
User Name	root	Configuration
Password	123	

Streaming information

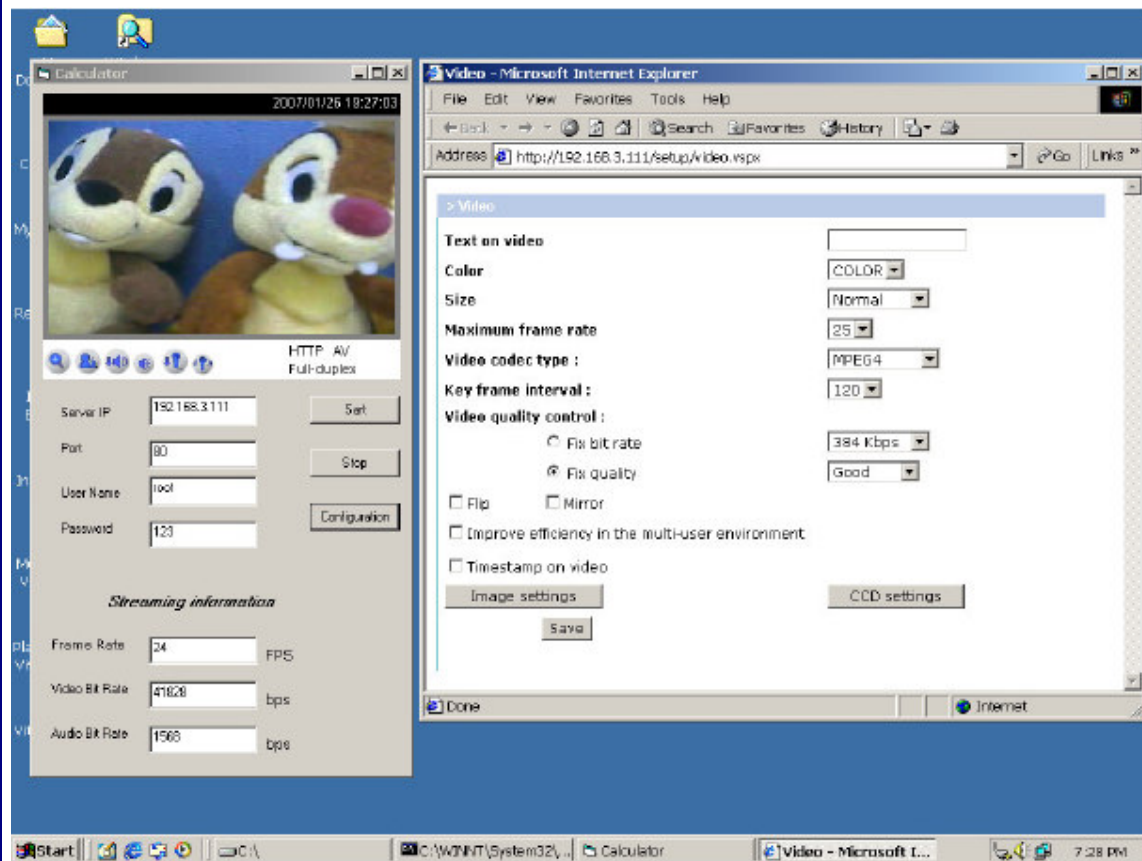
Frame Rate		FPS
Video Bit Rate		bps
Audio Bit Rate		bps

Step3: The connection is built and streaming information is displayed.



Step4: Pressing the "Stop" button for close the connection.

Step5: "Configuration" button is used to launch the video setting page of server. You can modify the video setting as your need.



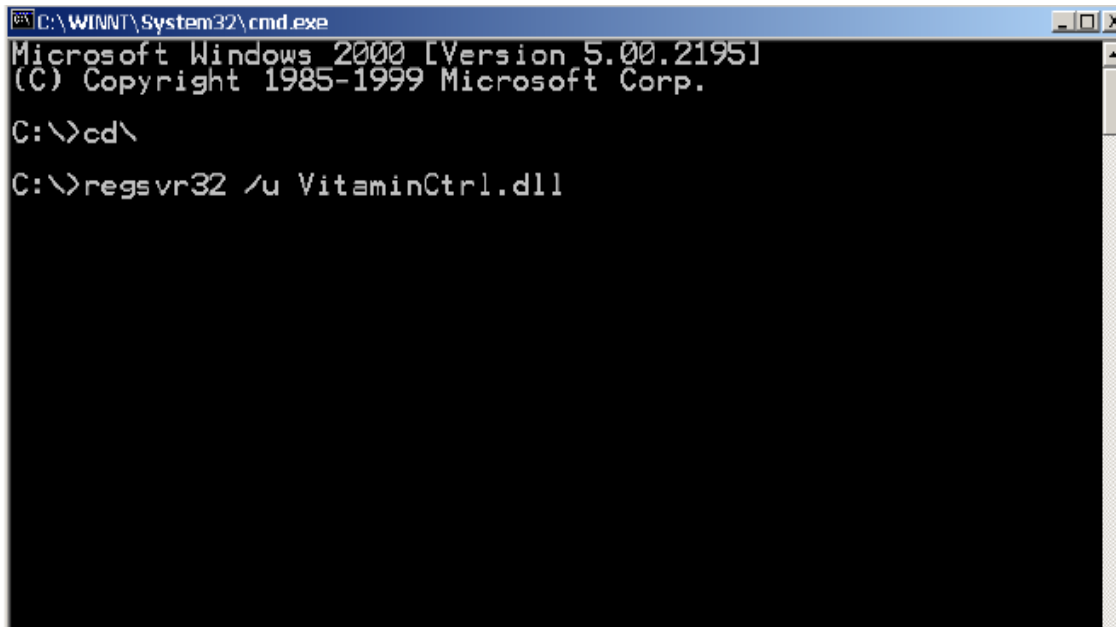
Notice:

If you don't want to use the Calculator anymore, you can uninstall the VitaminCtrl.dll program.

(1) Click Start → Run → Type "cmd" then click "OK" button

(2) Set path as C:\

(3) Input "**regsvr32 /u VitaminCtrl.dll**" then press enter



```
C:\WINNT\System32\cmd.exe
Microsoft Windows 2000 [Version 5.00.2195]
(C) Copyright 1985-1999 Microsoft Corp.

C:\>cd\
C:\>regsvr32 /u VitaminCtrl.dll
```

(4) Then message of successful register shows up. The un-installation is done.

