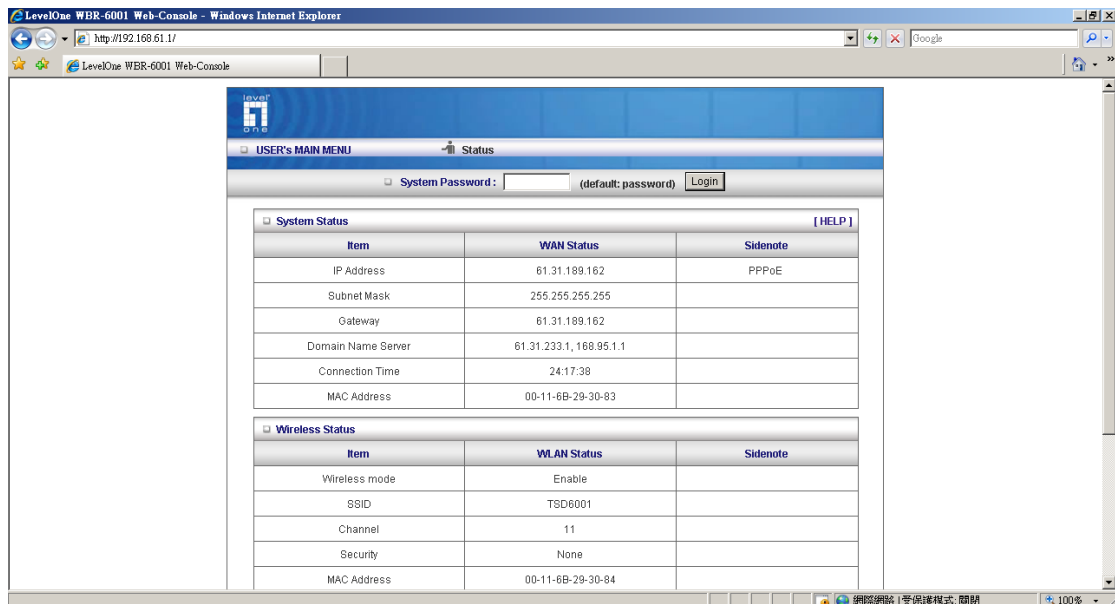




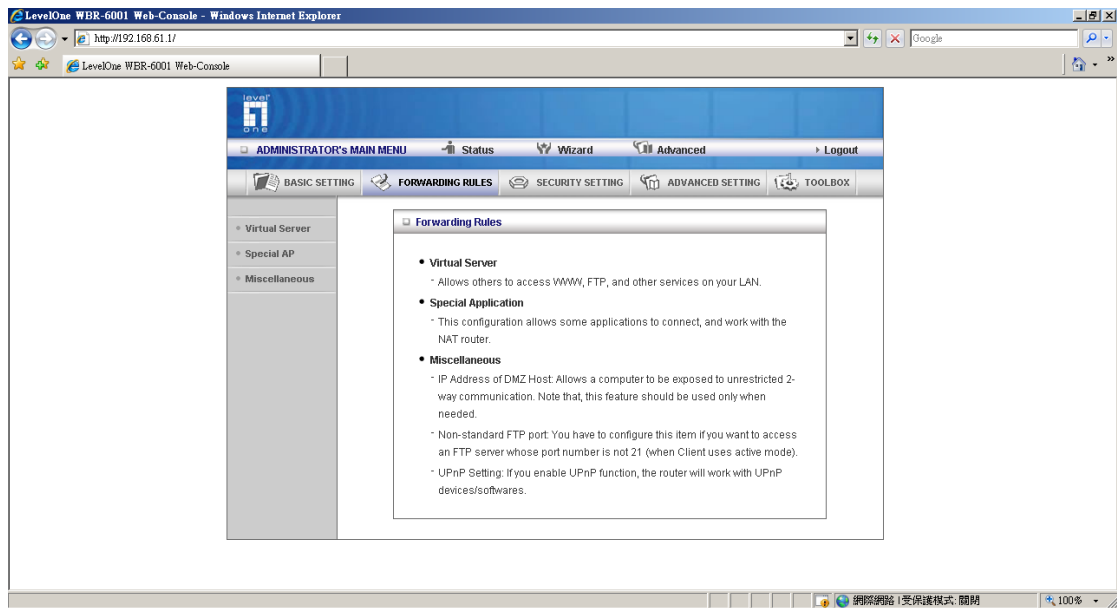
How to configure port forwarding in WBR-6001 to view IP Camera?

If you need to view IP camera installed in the LAN of WBR-6001 from the Internet either by your computer or mobile device. You will need to configure Port Forwarding (some devices might call it Virtual Server, Port Mapping). This guide will help you step by step.

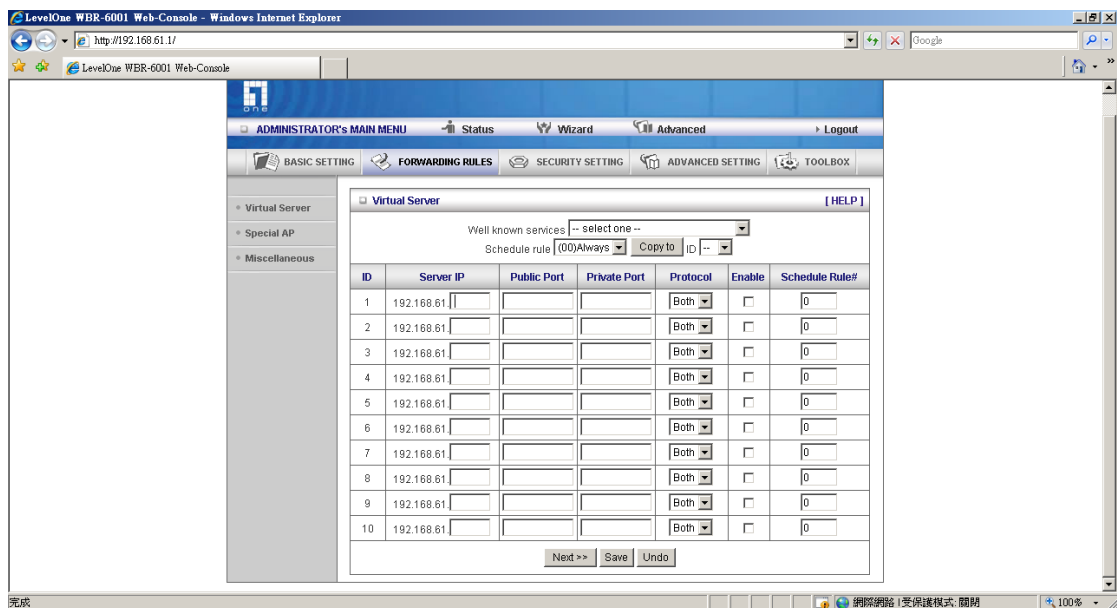
1. Please log in the web interface of WBR-6001.



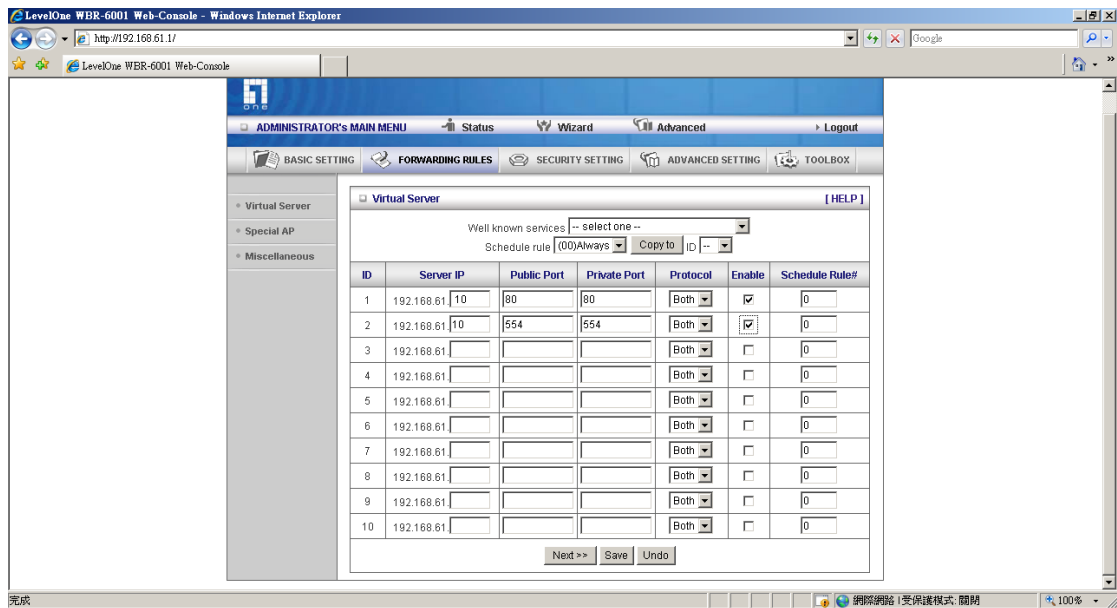
2. Click on Advance → Forwarding Rules.



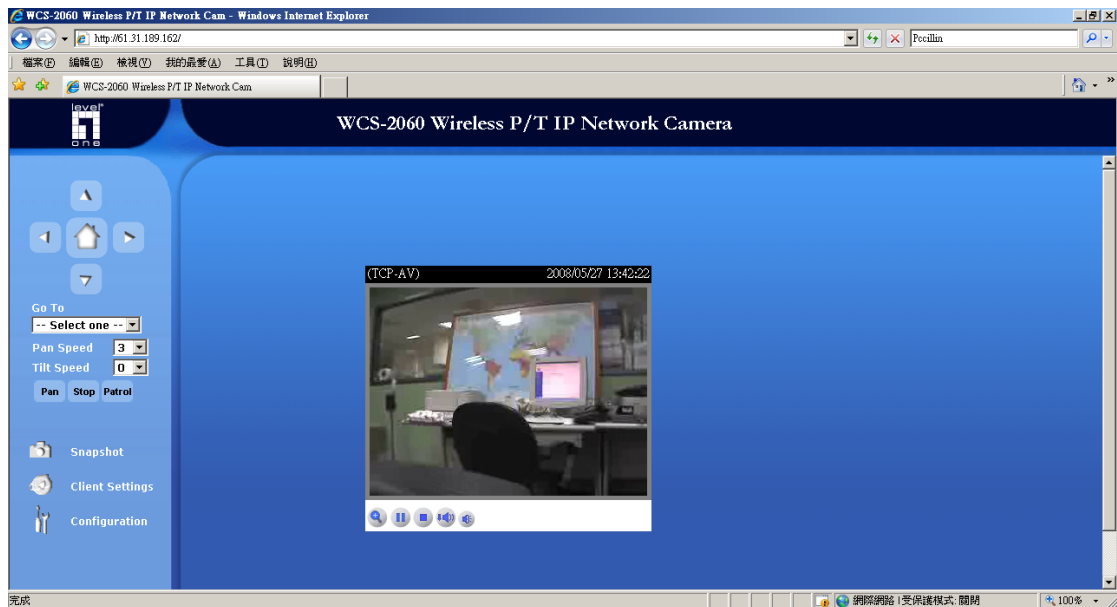
3. Click on Virtual Server.



4. Here we use WCS-2060 at IP Address "192.168.61.10" for example. WCS-2060 requires port 80 and 554 to be forwarded to it's LAN IP address. Public port and Private port should be the same. Protocol selects Both. And please do not forget to enable the rule.



5. You are now able to view the IP Camera with the Public IP Address of WBR-6001 from Internet.



Things to note:

- What about my IP Camera is not WCS-2060?

Please refer to the IP Camera Port Forwarding Reference table for your model.

<http://www.level1.tw/level1/faq/IPCam%20Port%20Forwarding%20Reference.xls>

Simply add the port number in your Virtual Server configuration Page.

- What about if my public IP address is Dynamic.

You can create a DynDNS account, configure it into your router. Your router will constantly update the IP address information to DynDNS server.

Please refer to

<http://www.level1.tw/level1/faq/How%20to%20create%20DynDNS%20account.pdf>

- How come I can not view the Video Streaming ?
 1. Please make sure your firewall does not block the port you forwarded, eg. Port 80, 554. Or disable your firewall.
 2. The firewall can be your Windows build in firewall, Anti Virus Firewall eg. Symantec Internet Security, PCCillin Internet Security etc...
 3. Please make sure you had installed the Active X that is required to view the Video streaming.
 4. Please make sure your Internet Explorer browser or Plug in tool eg. Google Search Tool does not block the Pop up Windows.

