

## How to configure mobile phone to use IP Cam Secure 3GPP ?

The default port 554 on your router must be open. If you changed this port number, please adjust to the new port accordingly. In addition, images are also streamed via UDP port number 6970 and beyond, each 3GPP client connection takes up 2 UDP ports starting from 6970.

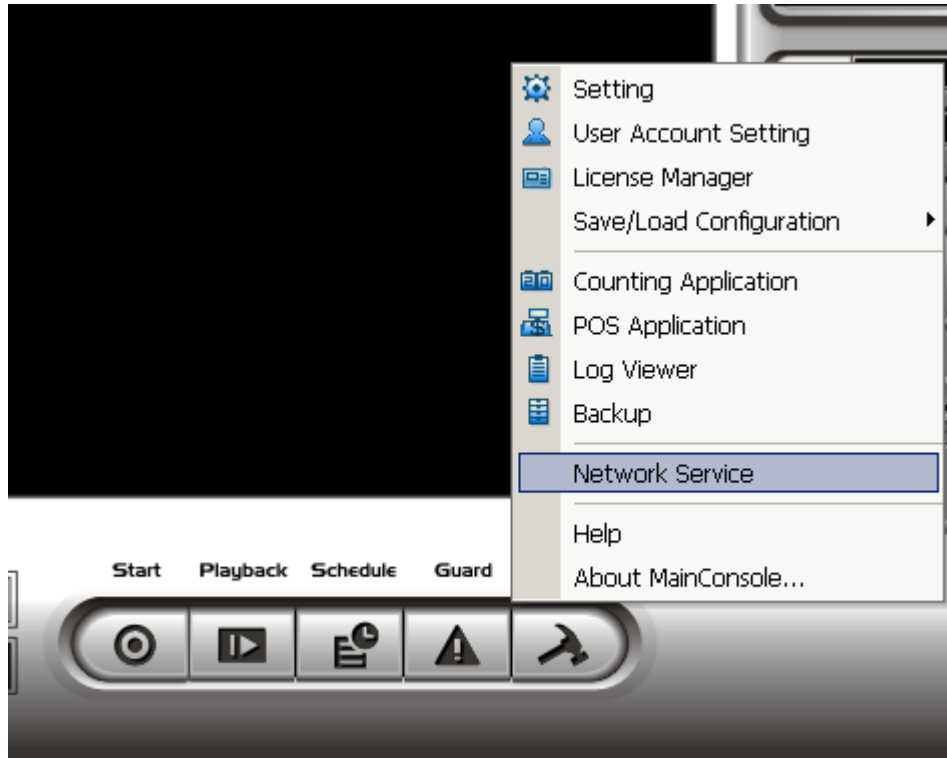
### Example

3GPP UDP ports	
Number of client connections	UDP ports to open
1	6970, 6971
2	6970, 6971, 6972, 6973
3	6970 - 6973, 6974, 6975
10	6970 - 6990
20	6970 - 7010

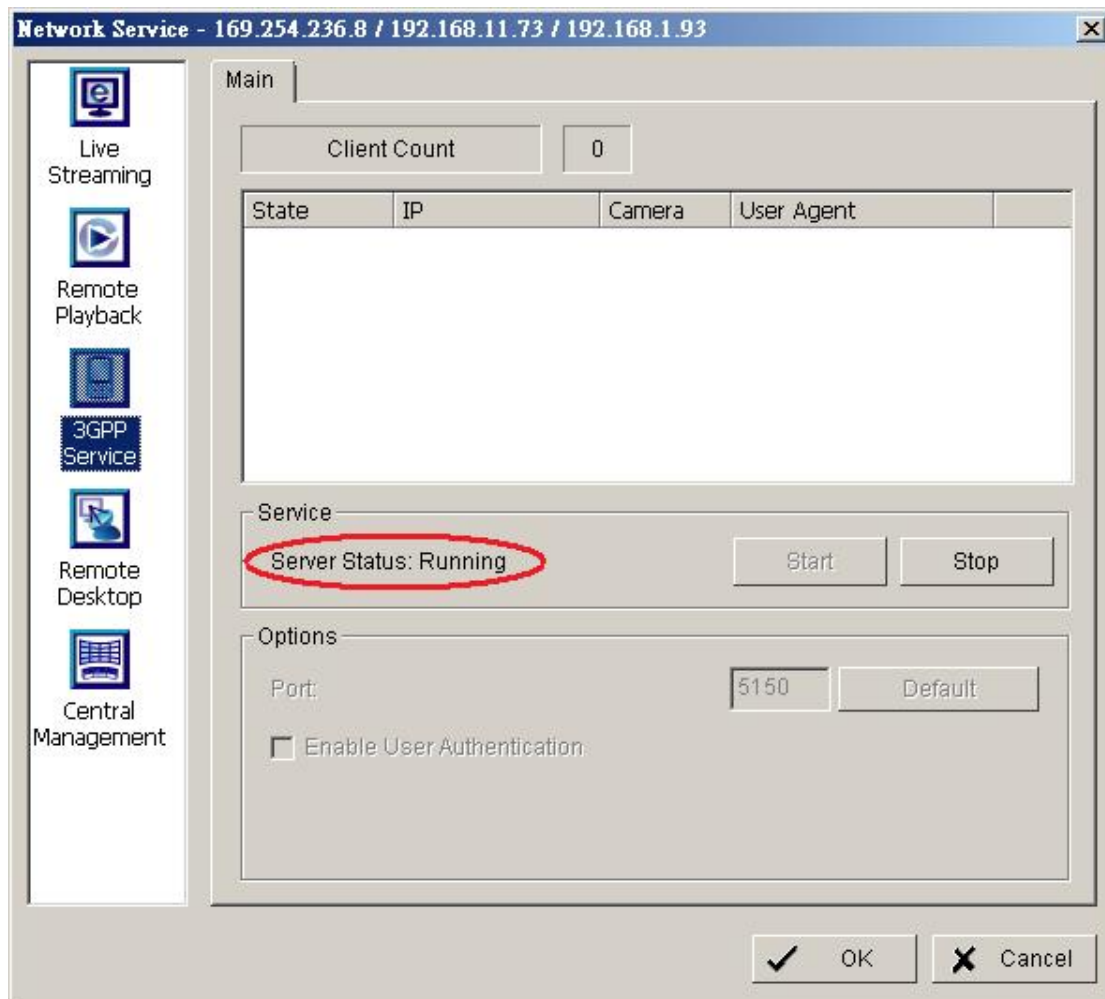
### Configuration on IP Cam Secure server

---

- 1.) Go to [Config]->[Network Service]



2.) Go to [3GPP Service], and then click [Start]



Please note that the port number is the port number you connect to from your mobile devices.

### Supported mobile phones overview

There are two ways to use mobile phones viewing video remotely.

1.) Using PDA/smartphone viewer on PDA or smartphone which runs Windows Mobile (5.0/6.0/6.5) to access live streaming from Mainconsole.

2.) Accessing live streaming by the mobile phones that support RTSP (usually running on symbian OS). The tested cellphones are listed in the following table.

iPhone

---

- User can view video on iPhone via Safari.

PDA phone and Smart phone


---

- Below are PDA/smart phones which pass the test.

PDA phone

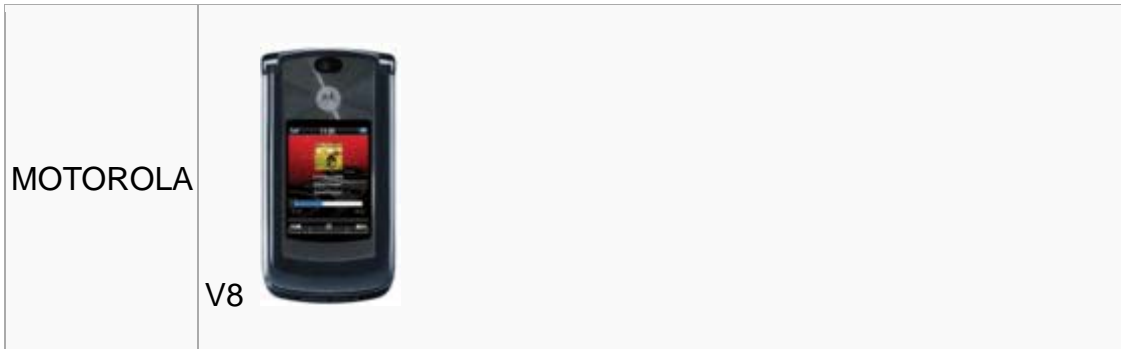
Brand	Model
HTC	 Touch Dual
HTC	 HD 2

Smart phone

Brand	Model
HTC	 S730

General mobile phone

Brand	Model
NOKIA	 N73  N82  N90  N95 
	 N96  6120  6110  E90 
BenQ	 P50  P51  E81



Configuration on mobile devices

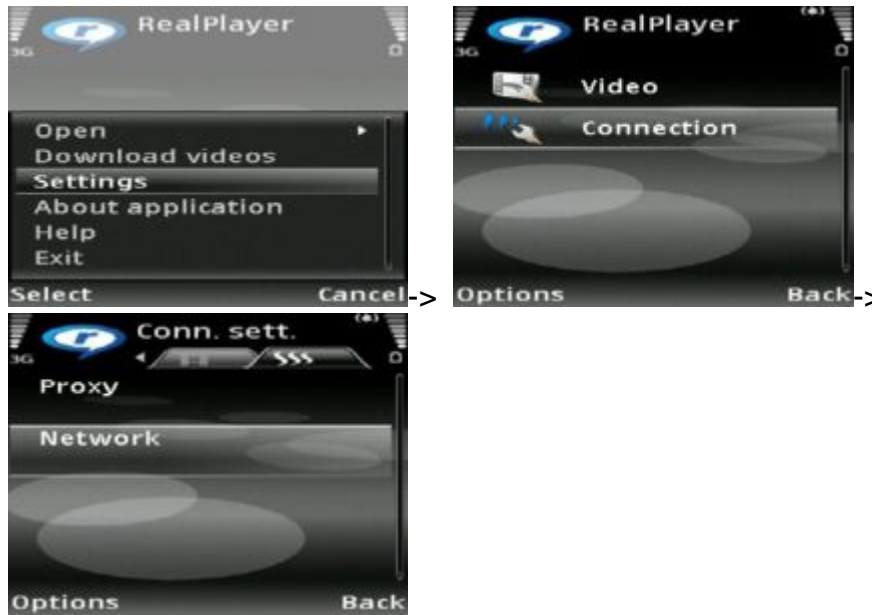
---

Nokia

1.) Start RealPlayer: [Menu]->[Applications]->[RealPlayer]

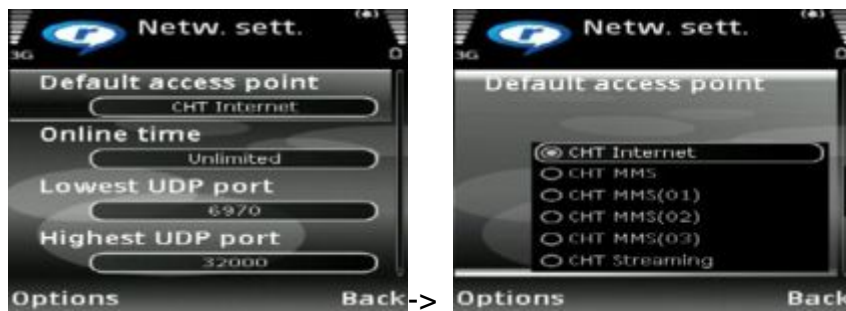


2.) [Settings]->[Connection]->[Network]->[Default access point]



3.) [Default access point]

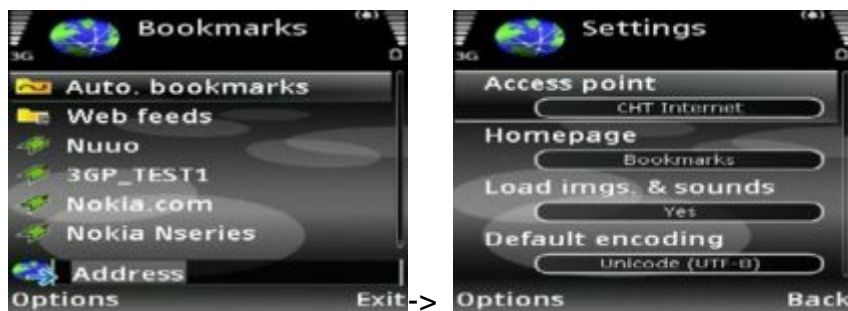
4.) Choose 「CHT Internet」



5.) Start Web: [Menu]->[Applications]->[Web]

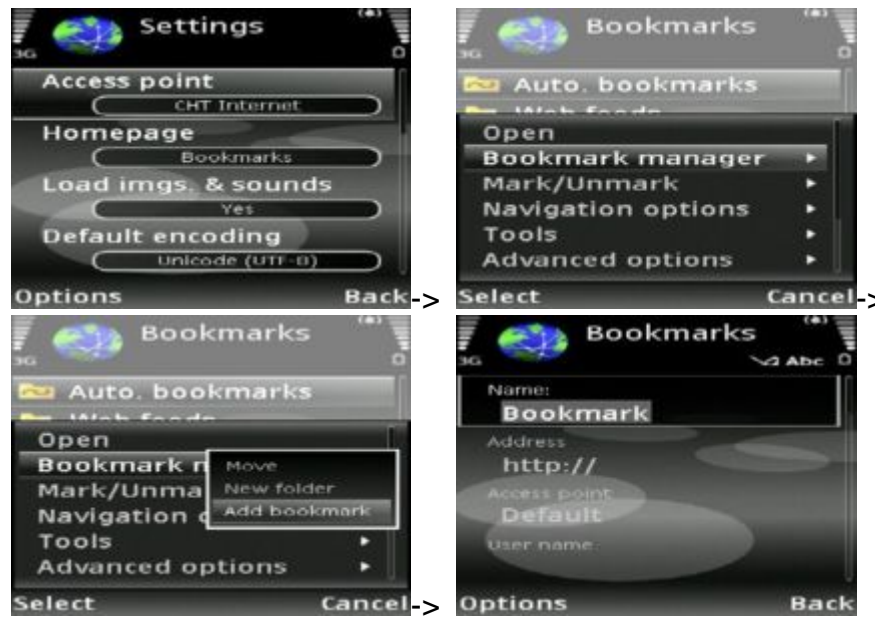


6.) Web Settings:[Options]->[Applications point]->Choose[CHT Internet]



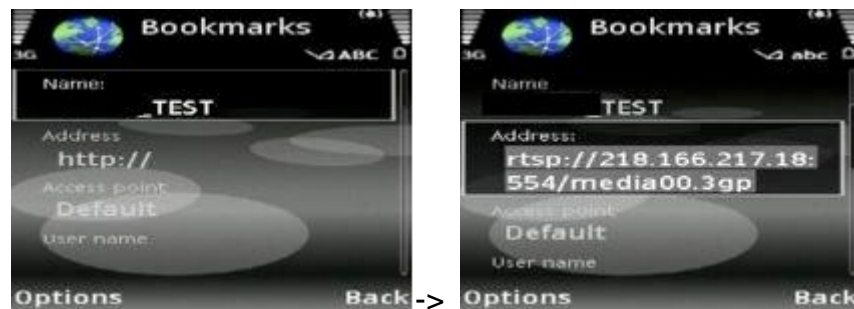
7.) Bookmark:[Options]->[Bookmark manager]->[Add bookmark]





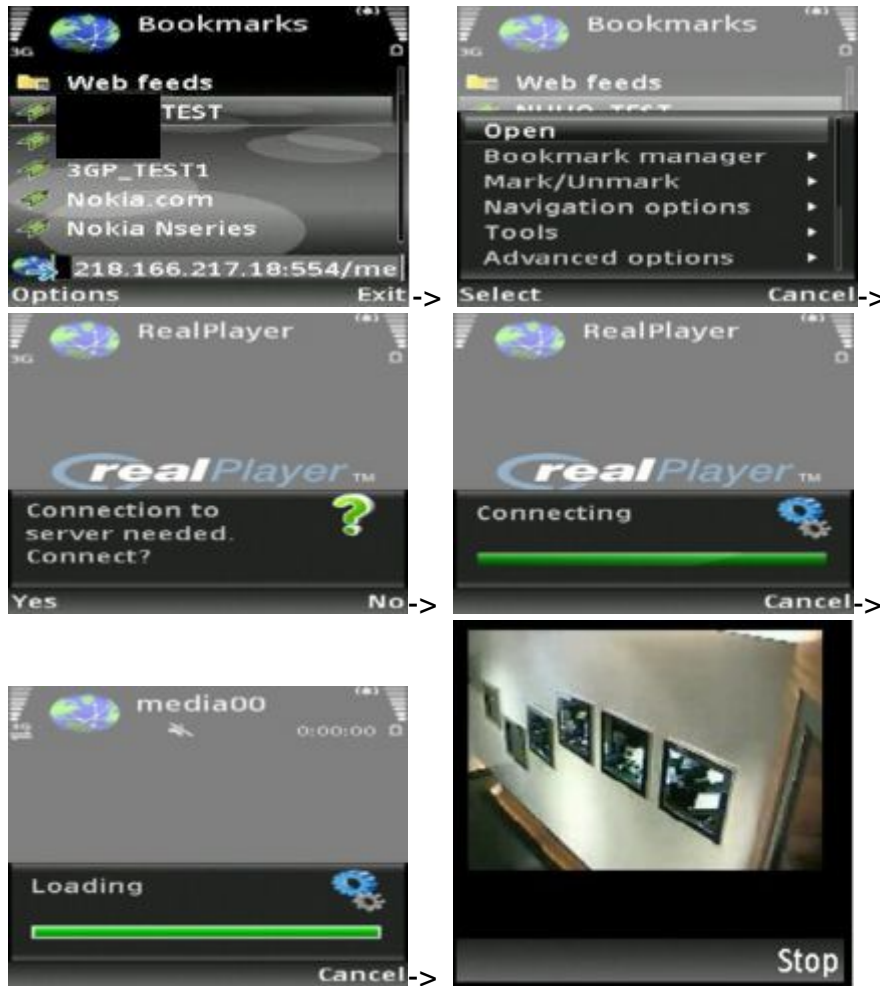
8.) Name: TEST (example)

9.) Address: rtsp://218.166.217.18:554/media00.3gp(example)



10.) Save the setting

11.) open TEST in bookmark.



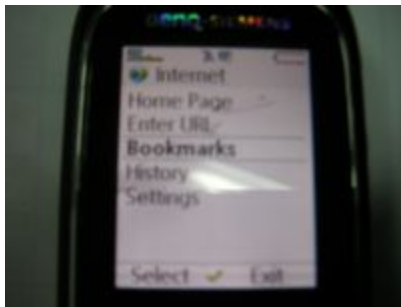
BenQ-Siemens

BenQ-Siemens E81

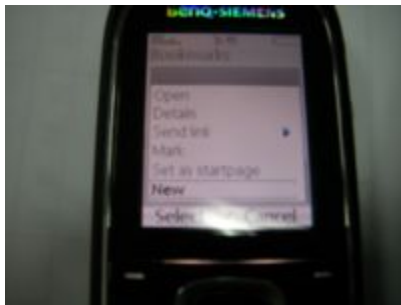
1.) Go to [Menu]->[Internet]



2.) Select [Bookmarks]



3.) Add a new bookmark



4.) Configure the address setting as shown in the photo.



5.) `rtsp://xxx.xxx.xxx.xxx:554/media00.3gp`

*xxx.xxx.xxx.xxx is the IP address of your IP Cam Secure*

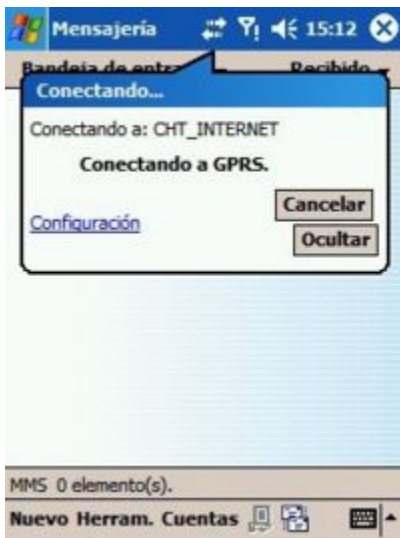
*554 is a default port in 3GPP Service from IP Cam Secure*

6.) Save the settings and start playing



BenQ P50

1.) Connect GPRS



2.) Download and install the PLATFORM4 software

3.) Execute IP Cam Seucure Main Console



4.) Press the [Config]->[Network Service]->[Start]



5.) Open PLATFORM4, press the button framed by red into Option



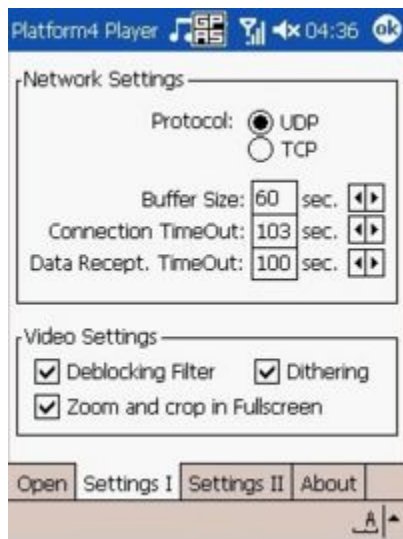
6.) [Open Url] enter the rtsp address of the camera



EX: *rtsp://61.216.97.69/media00.3gp* -> channel 1

EX: *rtsp://61.216.97.69/media01.3gp* -> channel 2

7.) In [Setting I]change those settings and press [OK]



[Protocol]: TCP

[Buffer Size]: 60

[Connection TimeOut]: 103

[Data Recept. TimeOut]: 100

[Deblocking Filter]: check

8.) Go back to PLATFORM4, searching and then getting the video

