



## How to configure FCS-5030 to record video in GNS-2000

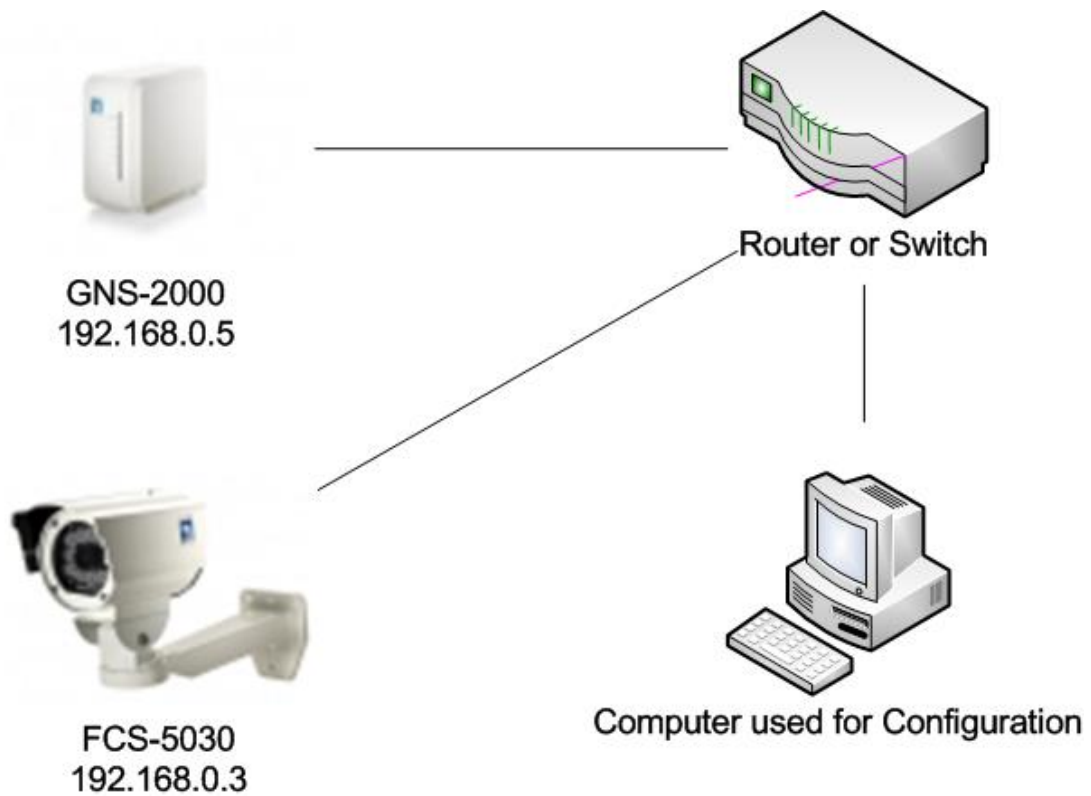
### Concept:

Most of the IP camera requires a computer to be turned on all the time and install surveillance software for recording purpose. FCS-5030 has a build in function to record video directly to the Network Attached Storage (NAS), here we use GNS-2000 as the NAS. This setup would consume less power than a computer and ideal for 24 – 7 continuous recording.

### Prerequisite:

1. You will need to be able to login FCS-5030 and configure network IP address.
2. You will need to login GNS-2000 and configure network IP address and format disk.

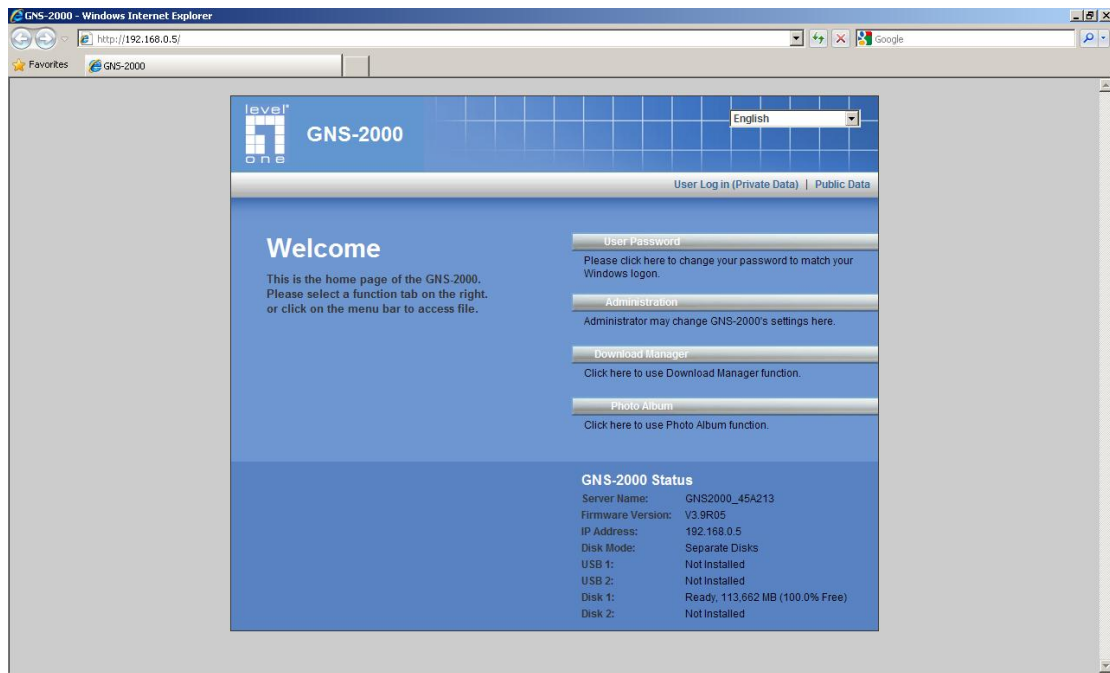
### Topology



- ◆ The IP address used here is only for reference, you may change your IP address to suit your network setup.

#### Configuration for GNS-2000

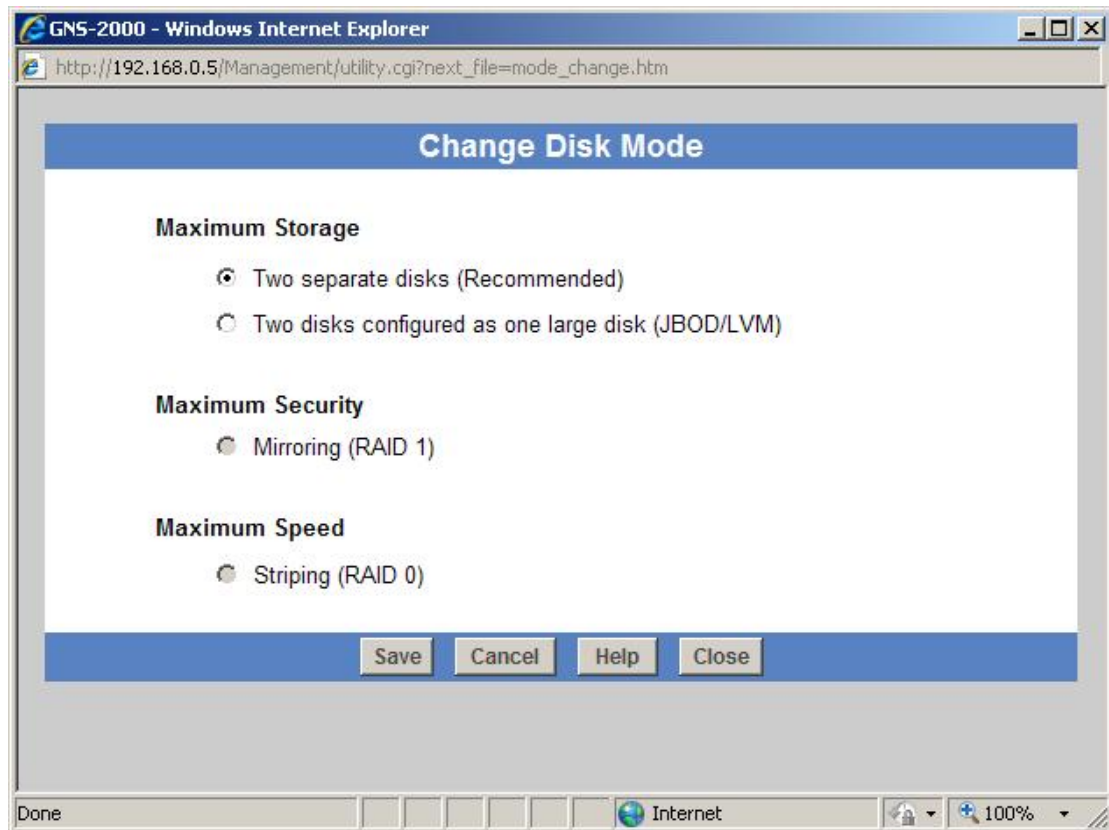
1. Please login GNS-2000, click on Administration.



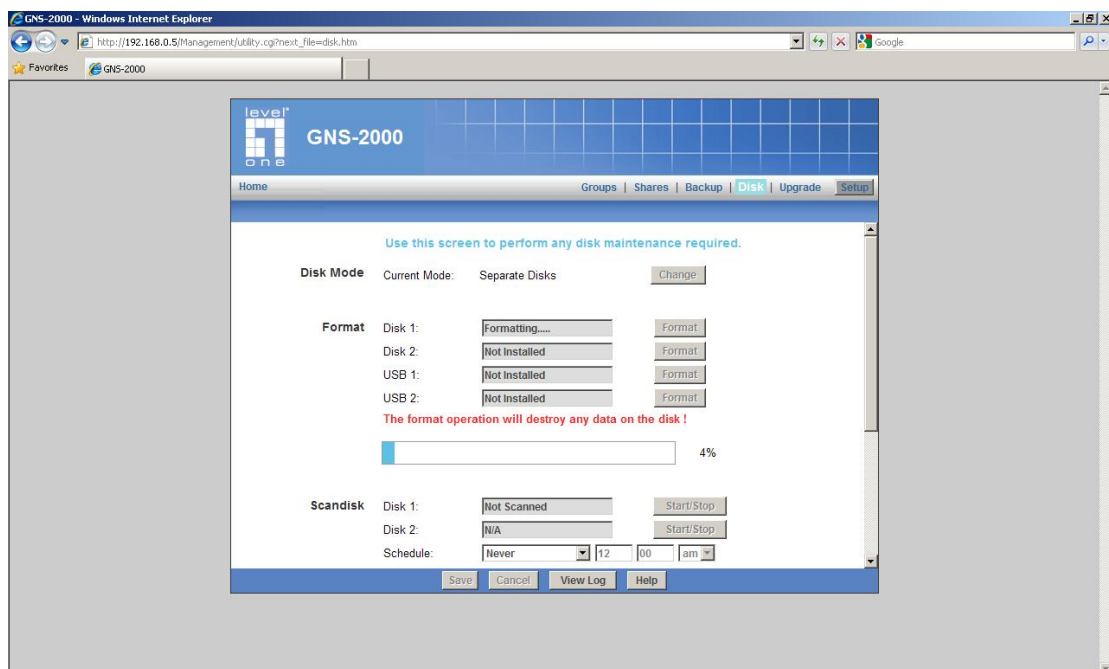
2. Please enter user name and password.



3. You may change the Disk Mode as you desire.



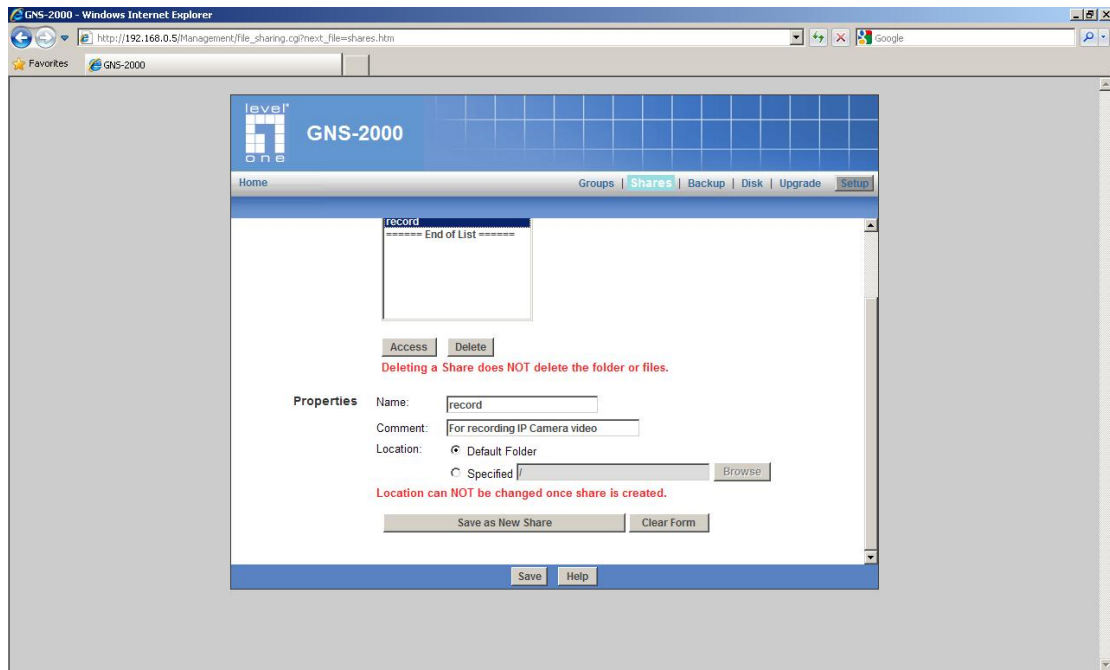
4. Please format your disk after changing the Disk mode.



◆ Please refer to user manual for Disk Configuration detail.

5. In the “Share” tab, please enter the name of the shared folder.

6. Click on “Save as New Share”.

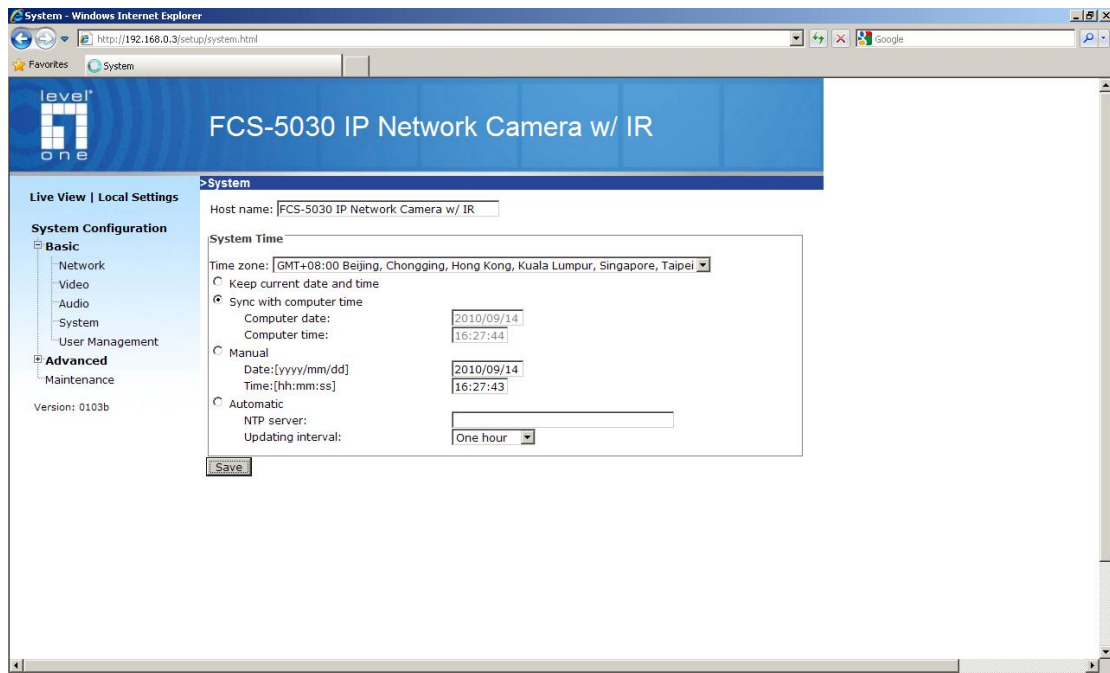


## Configuration for FCS-5030

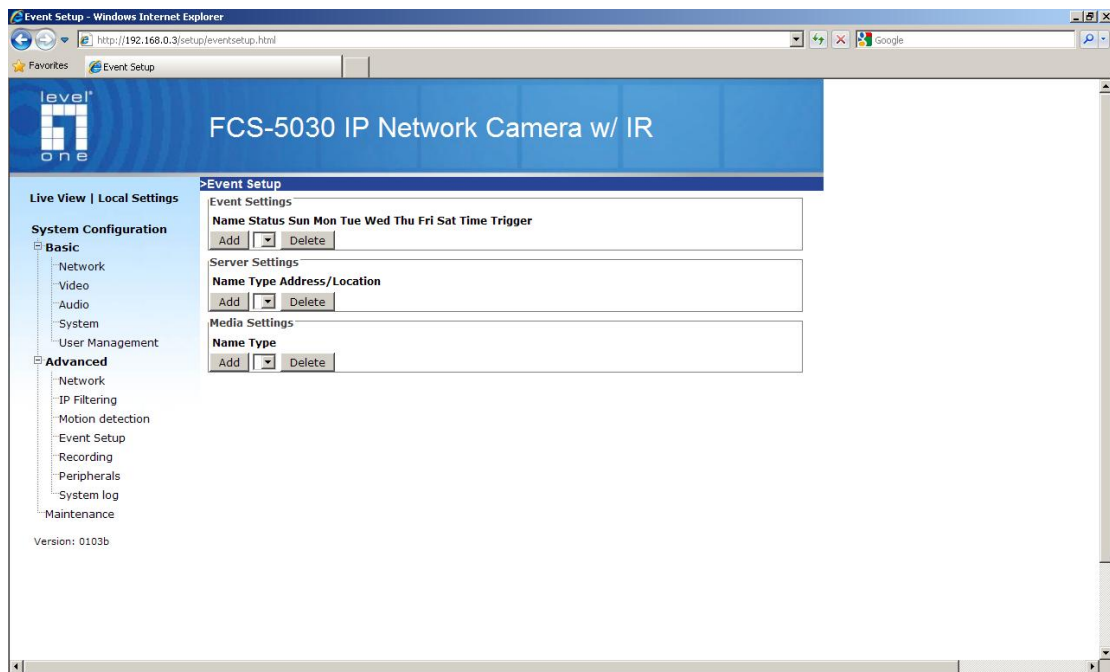
7. Please login FCS-5030, and click on System Setup.



8. Please check if your time is sync.



9. Please click on “Event Setup” tab, then click on “Add” under Server setting.



10. Under Network storage field, please enter the network location, and the user name of GNS-2000.  
In our example, we use  
[\\192.168.0.5\record](#)  
“admin” as user name.

Server Settings - Windows Internet Explorer

http://192.168.0.3/setup/server.html?index=0

>Server Settings

Server name: record

Server Type

☐ Email

Sender email address

Recipient email address

Server address

User name

Password

☐ FTP

Server address

Server port 21

User name

Password

FTP folder name

☒ Passive mode

☐ HTTP

URL http://

User name

Password

☒ Network storage

Network storage location \\192.168.0.5\record

(For example: \\my\_nas\disk\folder)

Workgroup

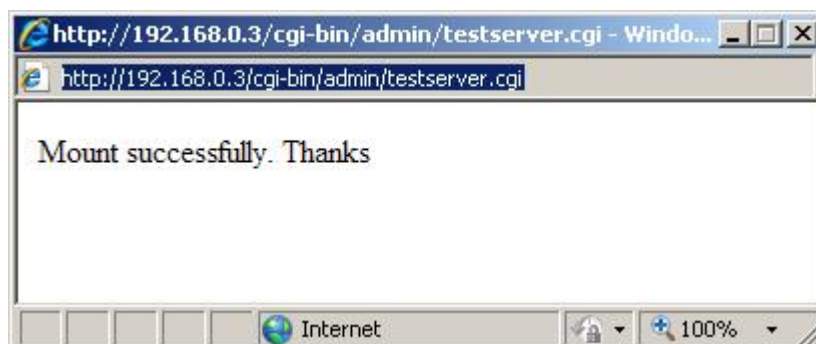
User name admin

Password

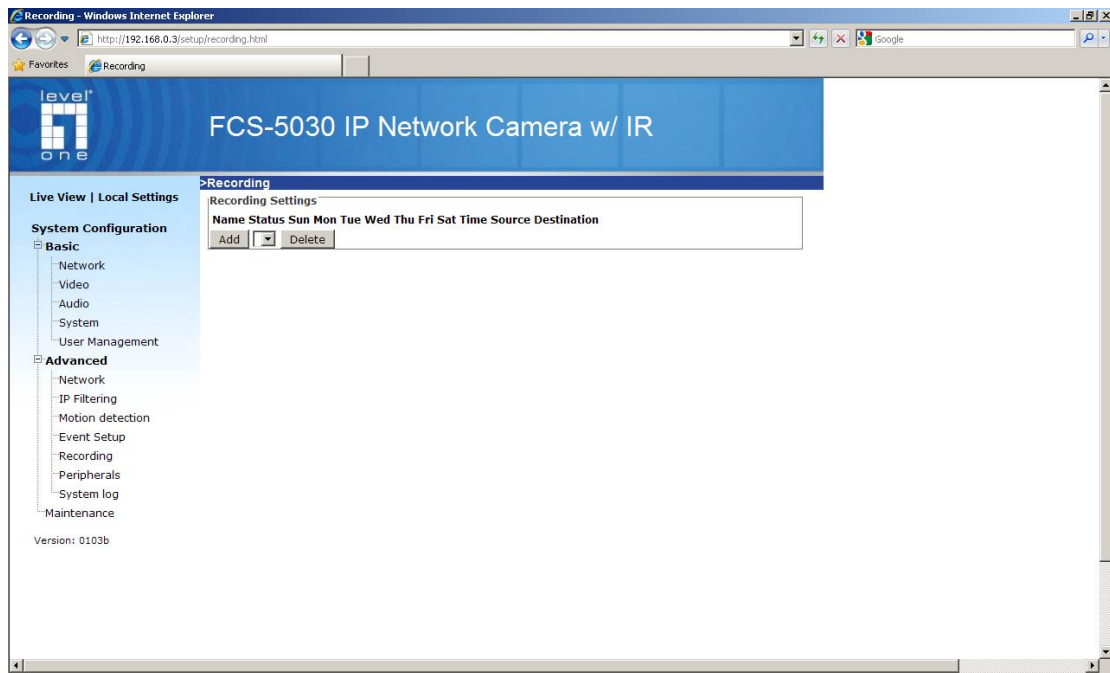
Test Save Close

Done Internet 100%

11. After configuration, you can click on “Test” button and check the connection.
12. If successful, the screen will show.



13. Click on “Recording” tab on the left, click on “Add”.



14. Please give recording a name.
15. Tick on "Enable this recording"
16. You can configure the camera to record "Always" or provide it a recording schedule.
17. In the Destination drop down menu, "record" should be shown as you had previously configured.
18. You can provide a file name prefix as you desire. This setting will be found easier to identify the recording if you have multiple cameras all record in the same folder.

Recording Settings - Windows Internet Explorer

http://192.168.0.3/setup/recording\_entry.html?index=0

>Recording

Recording name:

☒ Enable this recording

Priority:

Source:

Recording Schedule

☒ Sun ☒ Mon ☒ Tue ☒ Wed ☒ Thu ☒ Fri ☒ Sat

Time

☒ Always

☐ From  to  [hh:mm]

Destination

Server Settings :

Max. recording capacity

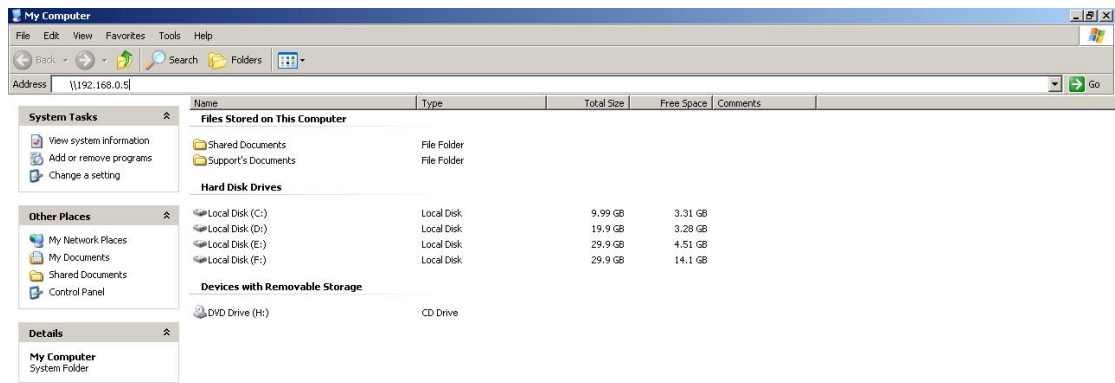
(Old file will be overwritten after reaching maximum recording capacity.):  Kbytes [1000~200000000]

File size for each recording:  Kbytes [200~6000]

File name prefix:

Done Internet 100%

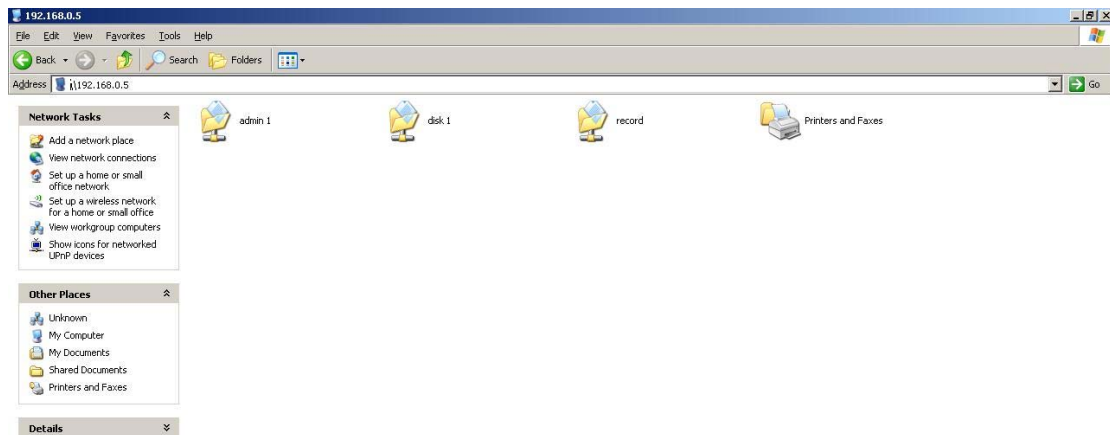
19. After configuration, you can use eg. Windows explorer and under Address, please input [\\ip\\_address\\_of\\_GNS-2000\folder\\_name](http://192.168.0.5/record). In our example, we use [\\192.168.0.5\record](http://192.168.0.5/record)



20. Please enter the user name and password of GNS-2000.



21. Here you will see the “record” folder previously created in GNS-2000.



22. Here are the files recorded by FCS-5030.

23. Click on the file, you will need eg. Quicktime player or KM player to playback the recording.

