



FBR-1411TX PPTP VPN setting (static IP vs. static IP)

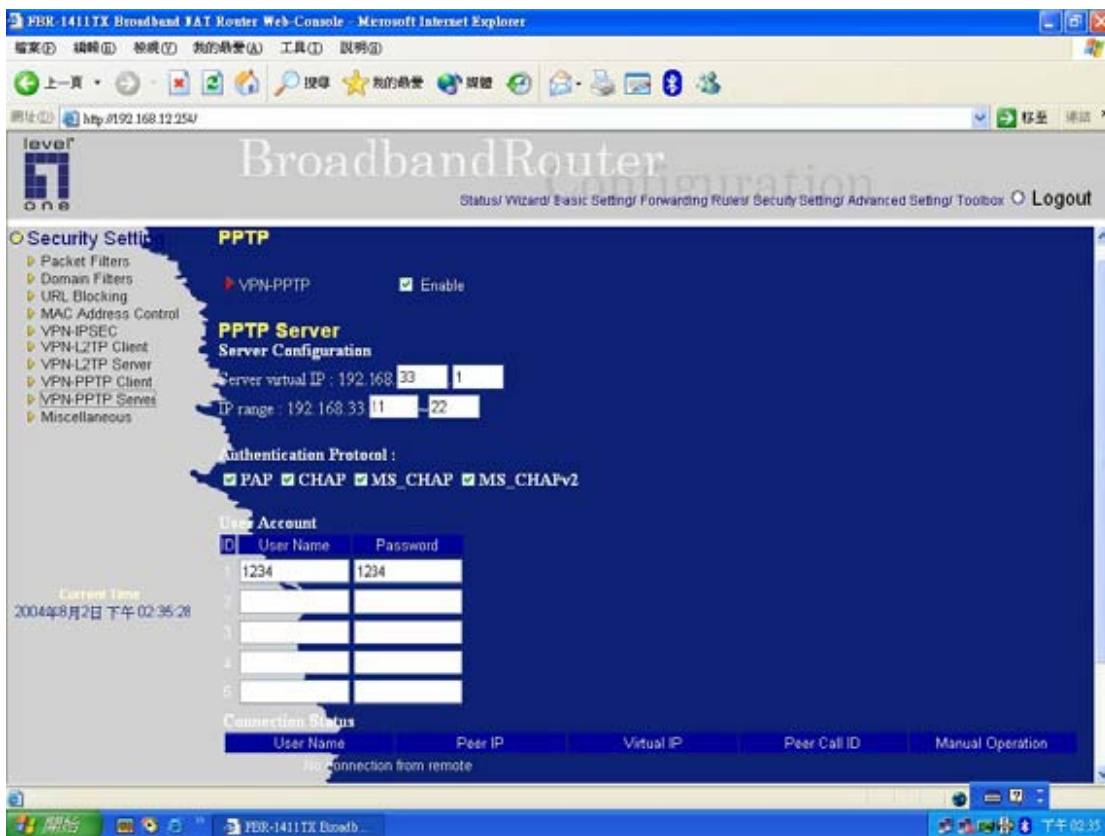
Information:

FBR-1411TX PPTP VPN server:
WAN IP: 210.64.157.200
LAN IP: 192.168.12.254
LAN IP sub mask: 255.255.255.0

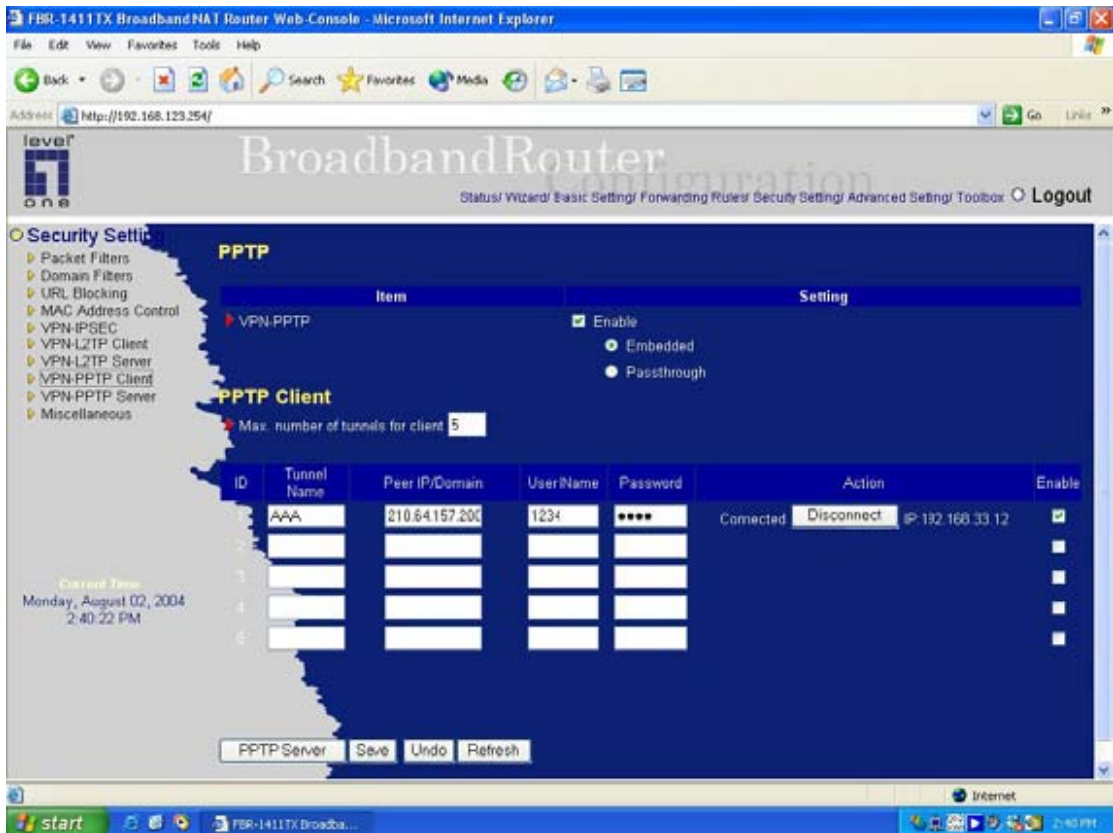
FBR-1411TX PPTP VPN client:
WAN IP: 218.167.10.219
LAN IP: 192.168.123.254
LAN IP sub mask: 255.255.255.0

Setup:

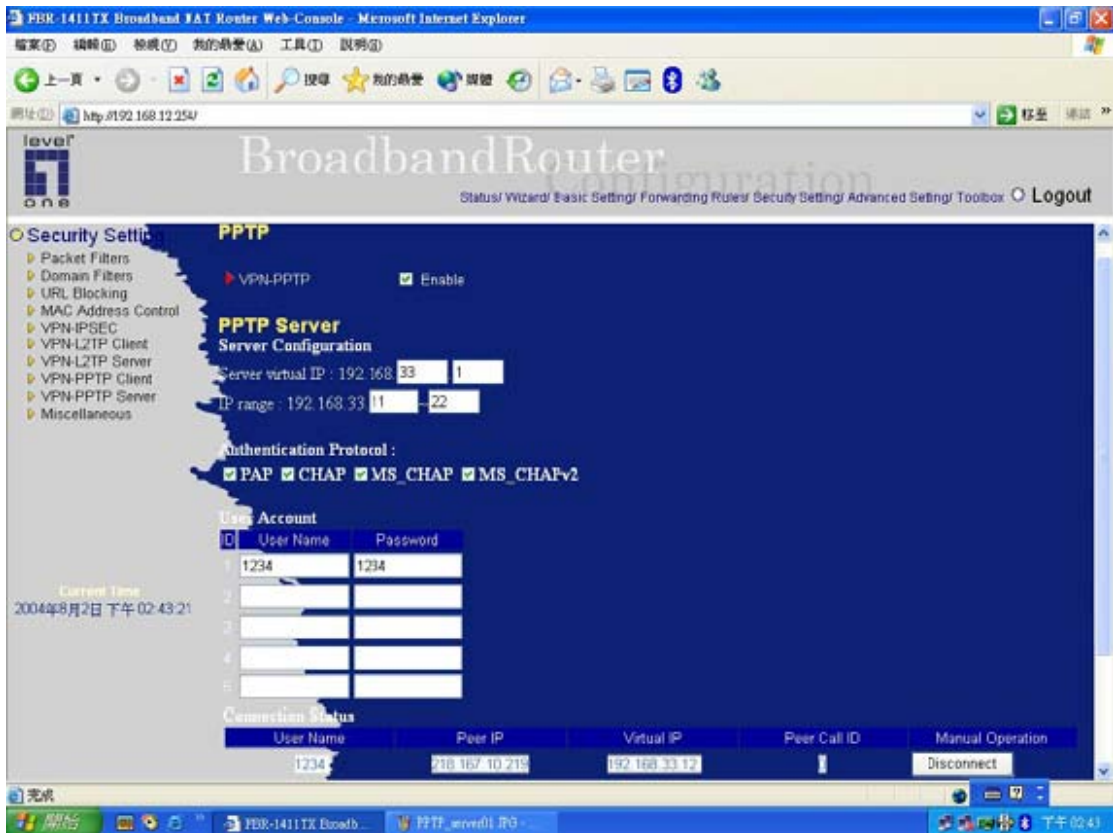
FBR-1411TX PPTP VPN client to FBR-1411TX PPTP VPN server



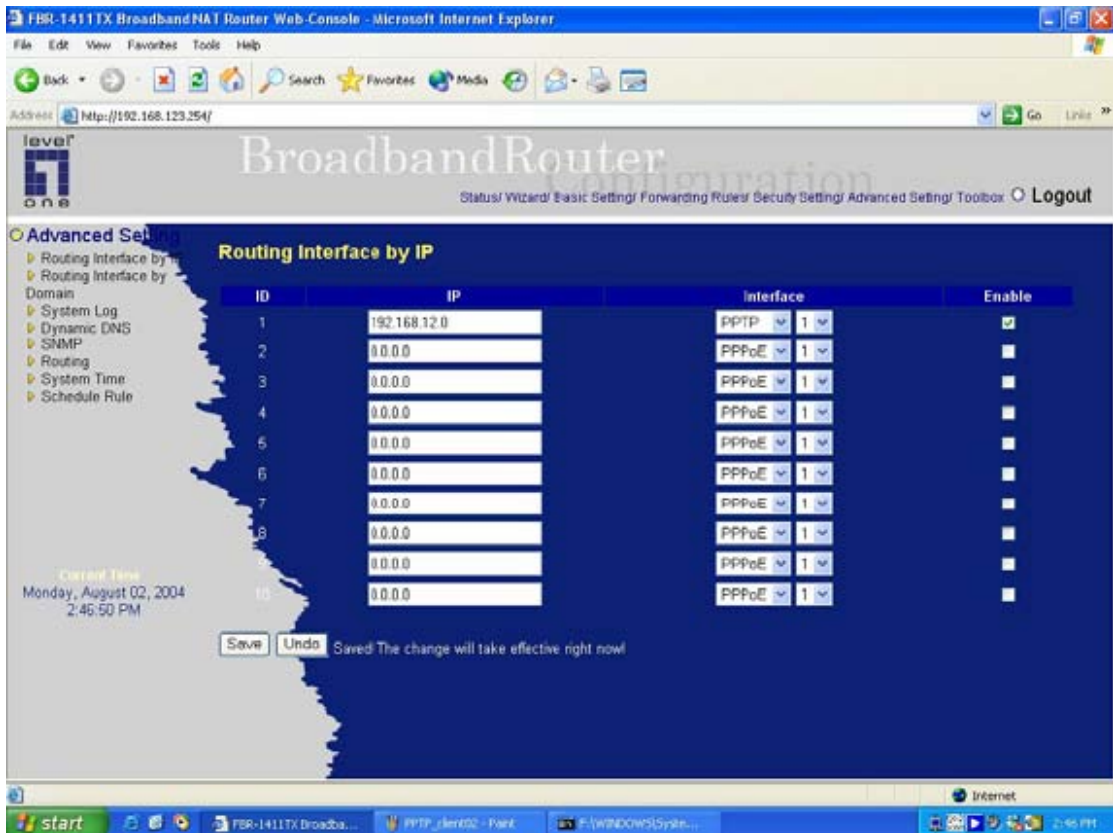
1 Setting FBR-1411TX PPTP VPN server end and enable it.



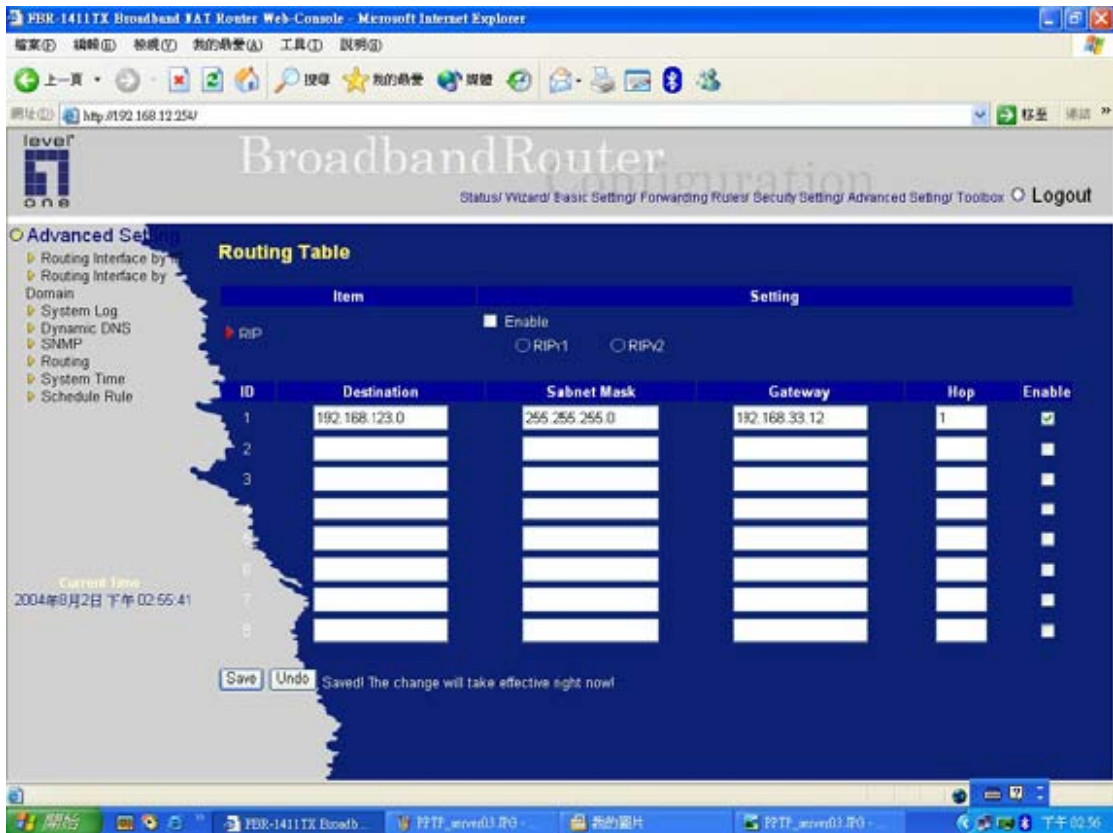
2 Setting FBR-1411TX PPTP VPN client end accordingly then enable it and make a successful connection with FBR-1411TX PPTP VPN server.



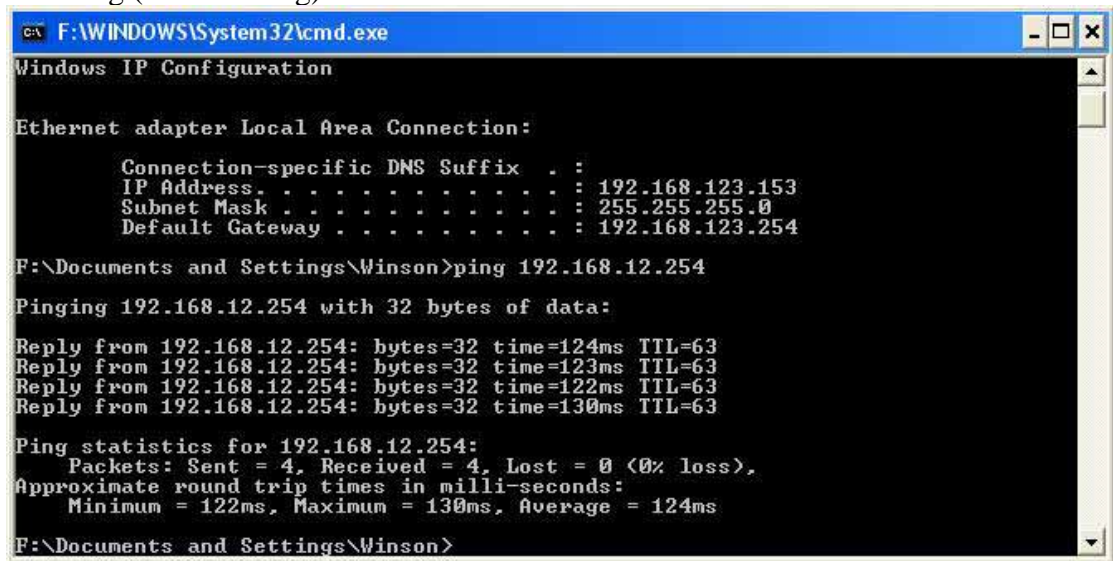
3 Checking the connection status of FBR-1411TX PPTP VPN server end then we will see a successful PPTP VPN connection between FBR-1411TX PPTP server and client ends.



4 Adding a routing table for FBR-1411 PPTP VPN client end via a function called “Routing interface by IP” then enable it.



5 Adding a routing table for FBR-1411 PPTP VPN server end via a function called “Routing (static routing)” then enable it.



6 A PC connected to FBR-1411TX PPTP VPN client end with virtual IP 192.168.123.153, which could ping FBR-1411TX PPTP VPN server end’s LAN IP 192.168.12.254 successfully.