



如何使用 IP CamSecure 遠端瀏覽

請先注意您的的軟體是否是最新版本,如果不是請參考下面的連結或請上 <http://www.level1.com>

IP CamSecure

[http://www.level1.tw/level1/tools/FCS-9032\(1.8-Lite\)-2007-10-15.zip](http://www.level1.tw/level1/tools/FCS-9032(1.8-Lite)-2007-10-15.zip)

Installation Wizard

[http://www.level1.tw/level1/tools/Installation_Wizard\(2.0\)_2007-10-22.zip](http://www.level1.tw/level1/tools/Installation_Wizard(2.0)_2007-10-22.zip)

以下為 LevelOne 參考範例,

PC1 :Windows XP IP:192.168.7.194(LAN IP)

WCS-2060 IP:192.168.7.173(LAN IP)

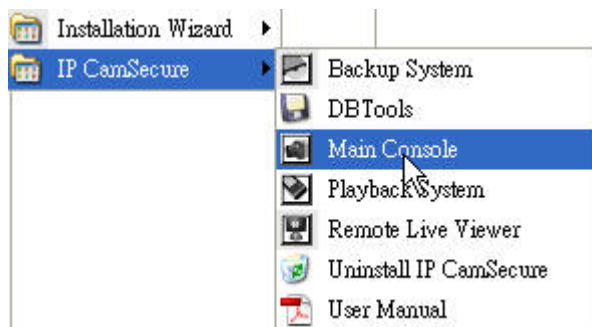
Router:WBR-5400 IP:192.168.7.1

WBR-5400 WAN IP 219.81.163.75

一.主機設定

1) 請先執行 IP CamSecure > Main Console.

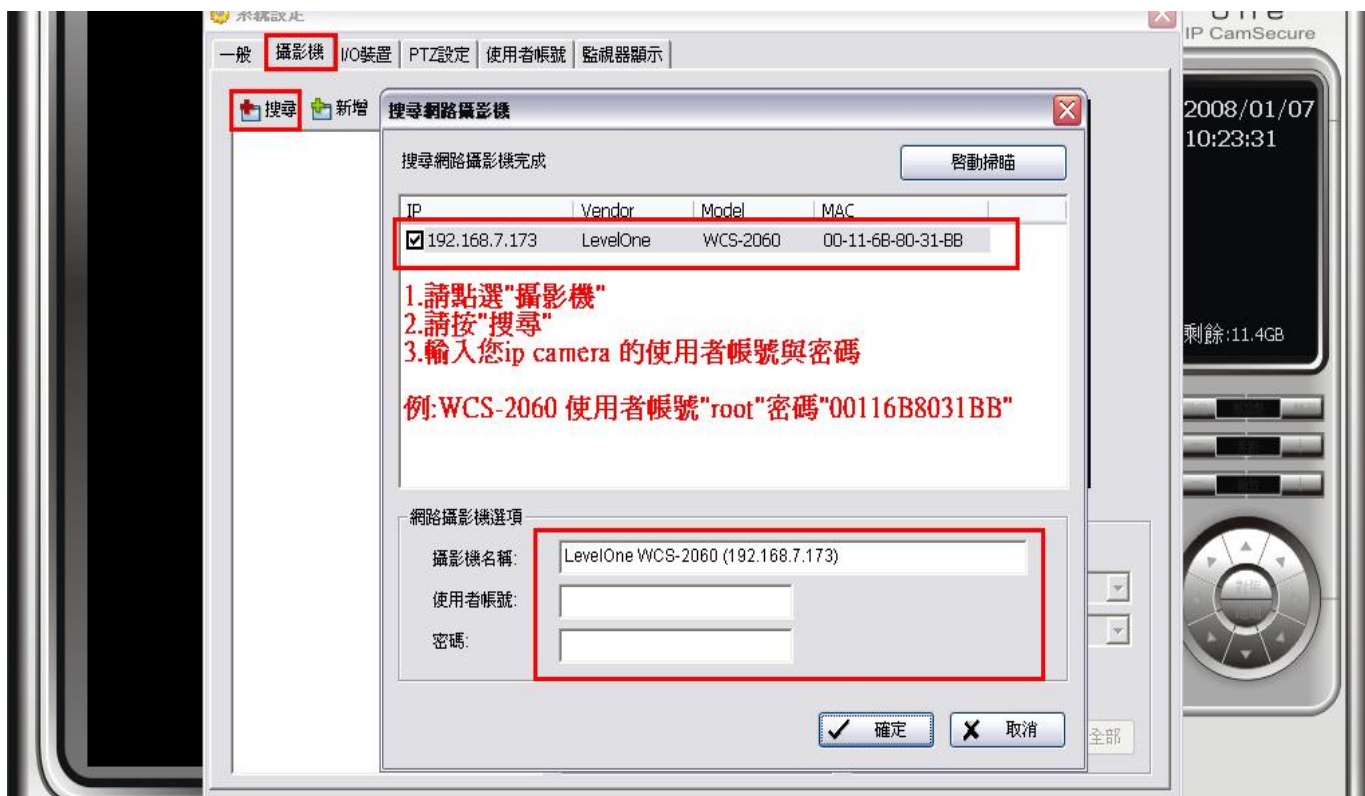
請確認您的登入的名字與密碼.



2) 請點選 “設定”>”系統設定”.



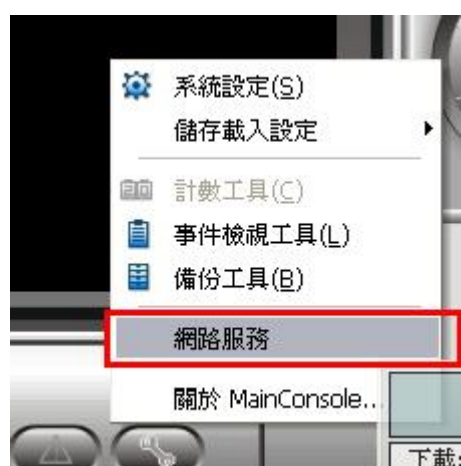
3) 請參考圖中說明. 完成請按確定.



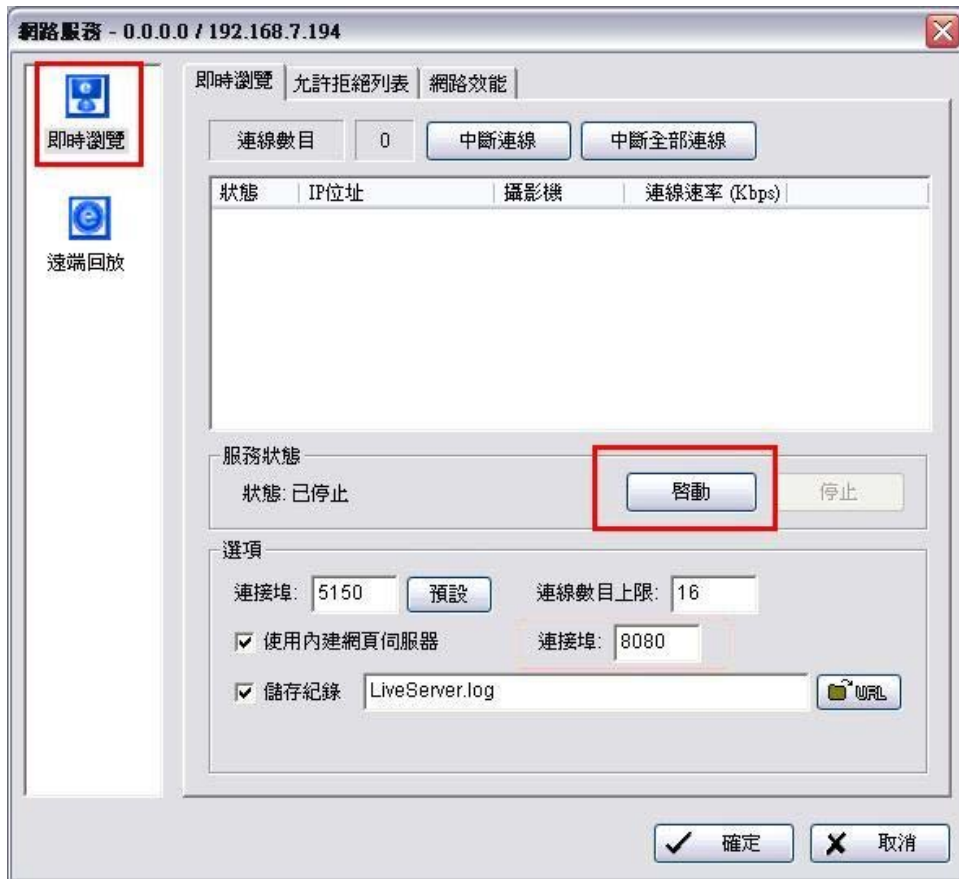
4) 完成請按確定



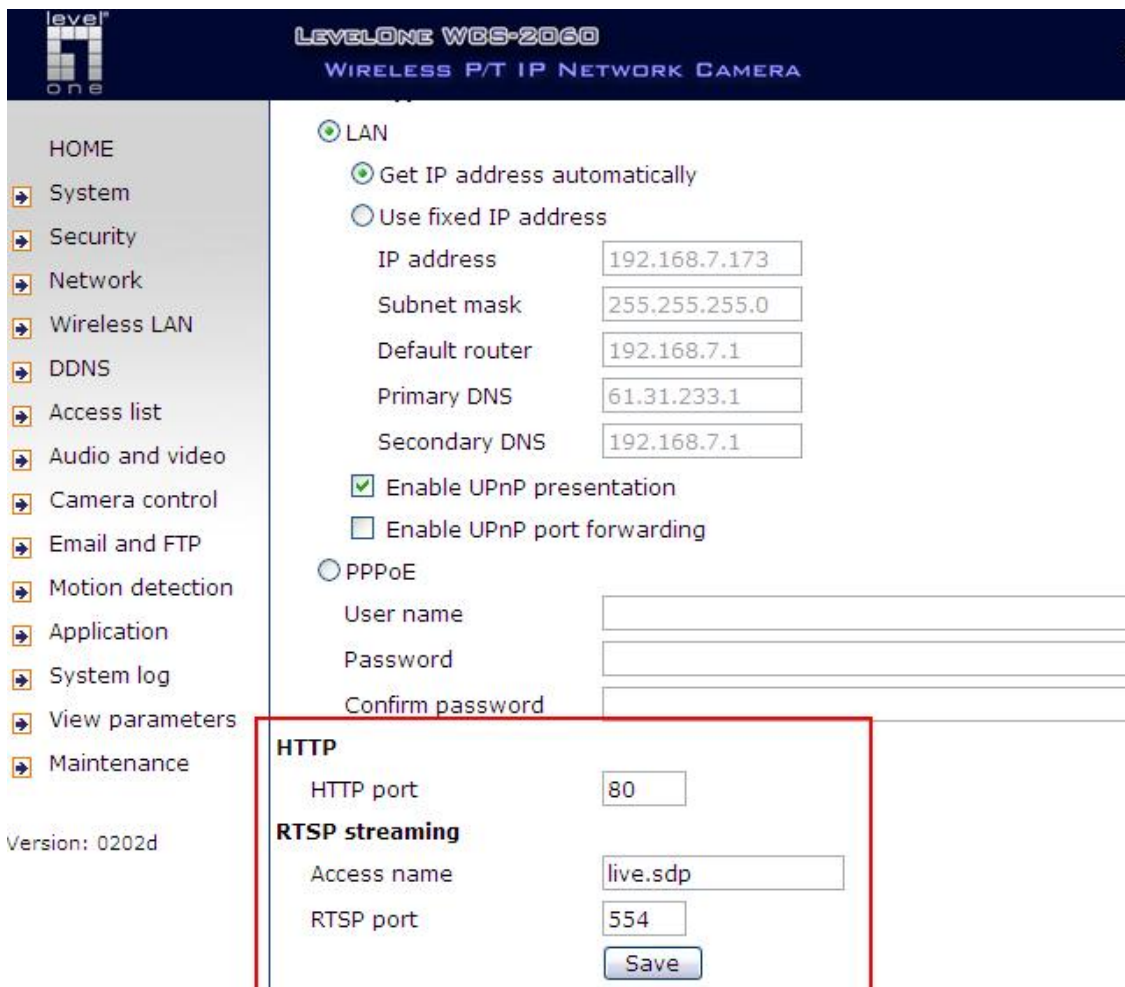
5) 請點選“設定”>“網路服務”。



- 6) 請參考圖中說明. 完成請按確定.
請確認您的連接埠是否有其它裝置已使用.



- 7) 確認您 http port and rtsp port.



8) 進入 WBR-5400 的虛擬伺服器輸入您要開的 PORT

The screenshot shows the LevelOne Broadband Router Configuration interface. The 'Virtual Server' section is active, displaying a table of virtual server configurations. The table has columns for ID, Public Port, Private Port, Server IP, and Status. Three rows are highlighted with red boxes and labels: Row 1 (ID 1) for HTTP and RTSP with Public Port 80 and Private Port 80, Server IP 192.168.7.173, labeled 'WCS-2060'; Row 2 (ID 2) for RTSP with Public Port 554 and Private Port 554, Server IP 192.168.7.173; Row 3 (ID 3) for Instant Search with Public Port 5150 and Private Port 5150, Server IP 192.168.7.185, labeled '主機IP'. The interface also shows a sidebar with navigation options and a top navigation bar with language settings.

ID	Public Port	Private Port	伺服器IP	啟動	規則編號
1	80	80	192.168.7.173 WCS-2060	<input checked="" type="checkbox"/>	0
2	554	554	192.168.7.173	<input checked="" type="checkbox"/>	0
3	5150	5150	192.168.7.185 主機IP	<input checked="" type="checkbox"/>	0
4			192.168.7.	<input type="checkbox"/>	0
5			192.168.7.	<input type="checkbox"/>	0
6			192.168.7.	<input type="checkbox"/>	0

二.遠端設定

PC2 :WNC-0600USB IP:192.168.0.2 (LAN IP)

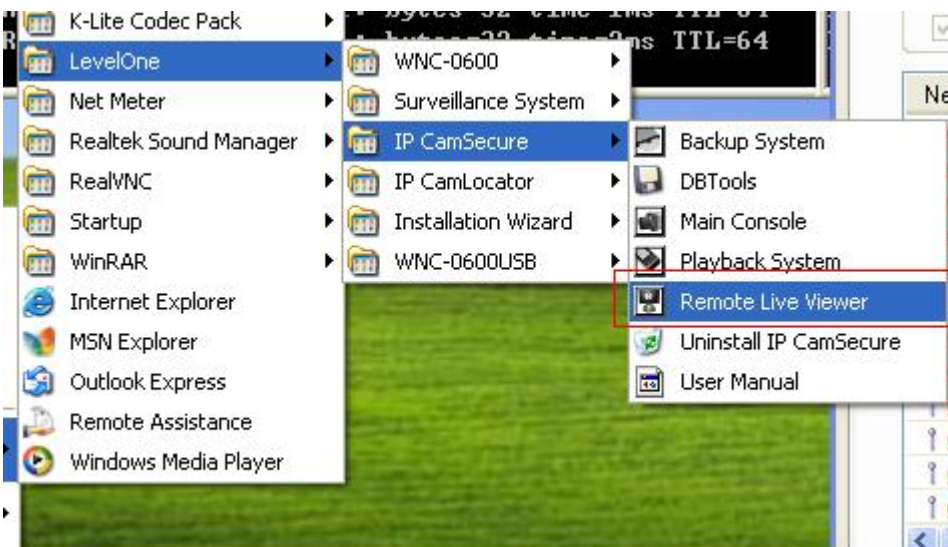
Router:WBR-6000 IP:192.168.0.1

WBR-6000 WAN IP : 61.31.170.80

方法 1

1) 請先執行>Remote Live Viewer.

主機的 IP CamSecure 請勿關閉.



- 2) 請按下圖中的 1 然後參考說明設定。
此時會顯示尚未連線。



3)連線成功.

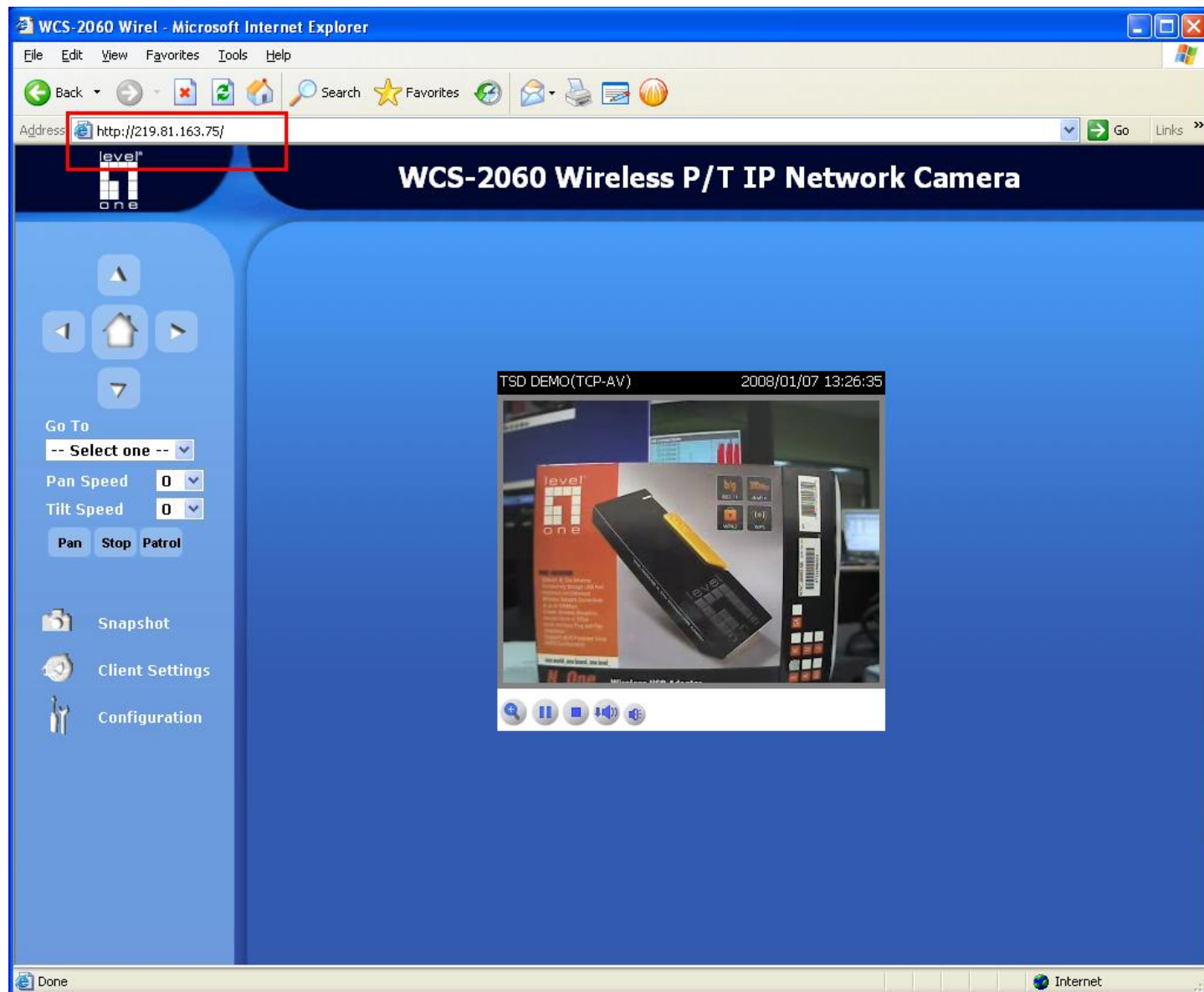


方法 2

不需要主機即可遠端瀏覽

請確定您的 LevelOne IP Camera 是否有虛擬伺服器設定成功。

在網址列輸入 WBR-5400 WAN IP 即可瀏覽。



PS:遠端瀏覽的快慢將取決您主機端的網路上傳速度.