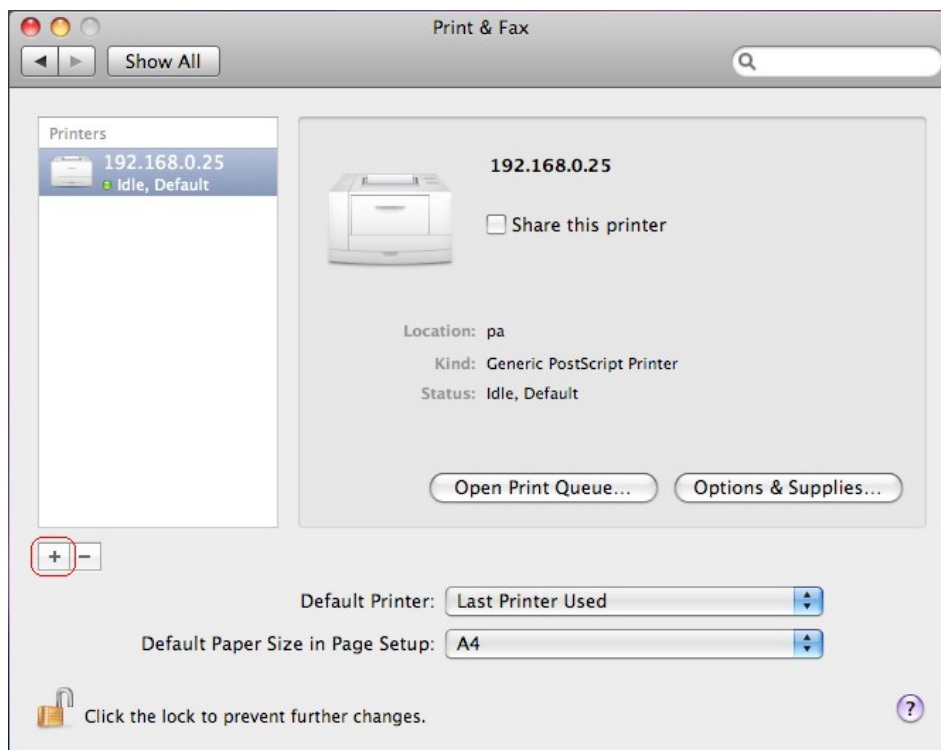


FPS-1031_1032_1033 and WPS-1133 Printer Configuration of Apple Mac OS X 10.5

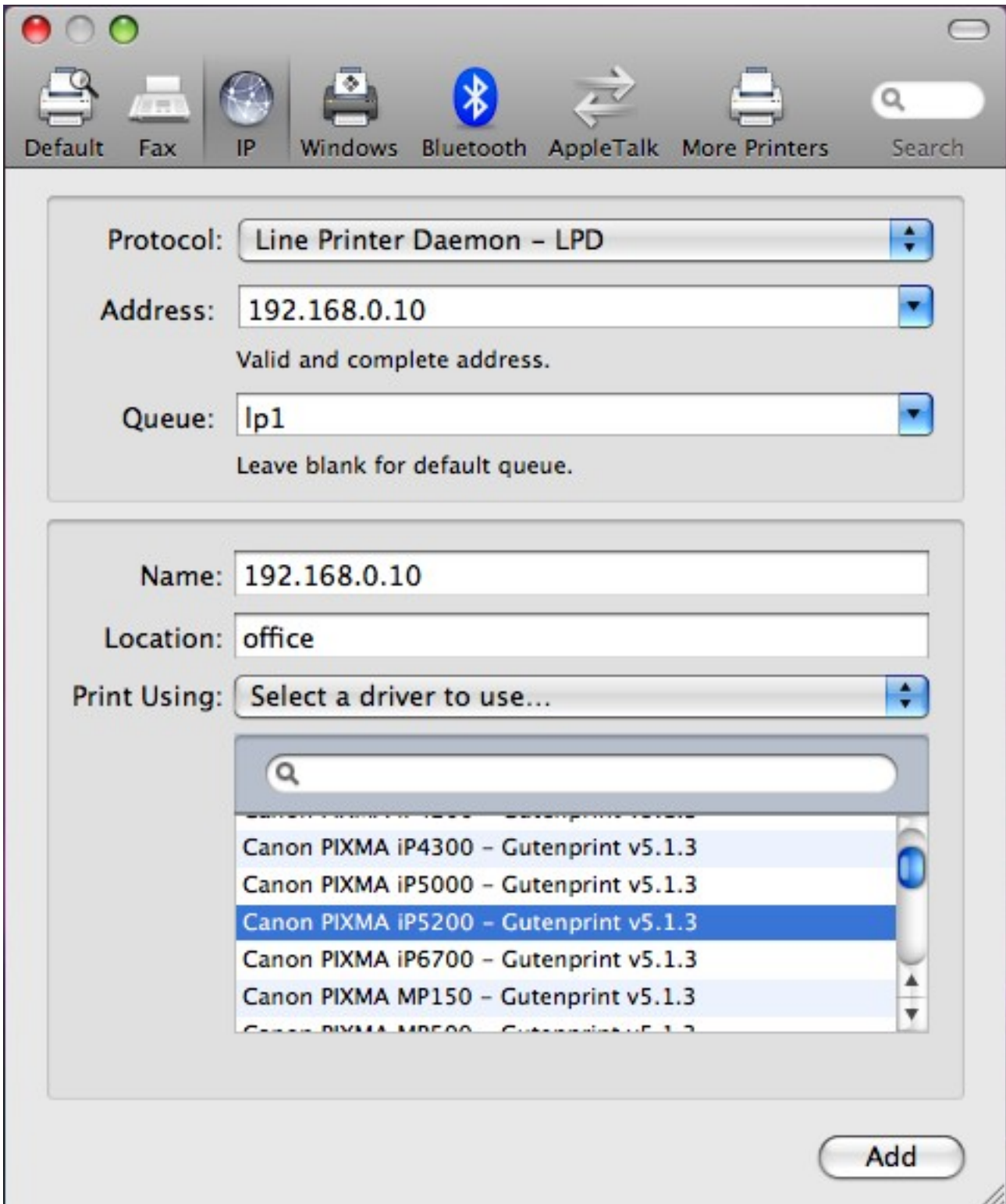
1. Click **Apple Icon** on the left-upper corner of Desktop, and click **System Preferences....**
Click **Print & Fax**.



2. Click **Plus**.



3. **Protocol:** Line Printer Daemon – LPD **Address:**
Input the IP address of the print server. **Queue:** lp1,
lp2, or lp3 (**fixed**)



If your print server is the 1-Port print server, its print port is the first.

If your print server is not the 1-Port print server, for example, it is the 2 USB and 1 parallel port print server, then, the parallel port is the first. USB 1 is the second. And, USB 2 is the third.

lp1 if your printer is connected with the first print port. lp2 if your printer is connected with the second print port. lp3 if your printer is connected with the third print port.

Name: Input the printer name you prefer.

Location: Input its location. **Print Using:**

Select a driver to use...

Click **Add**.