



FBR-1411TX PPTP VPN 設定 (固定IP vs. 固定IP)

訊息：

FBR-1411TX PPTP VPN伺服器：

WAN IP： 210.64.157.200

LAN IP： 192.168.12.254

LAN IP子網路遮罩:255.255.255.0

FBR-1411TX PPTP VPN用戶端：

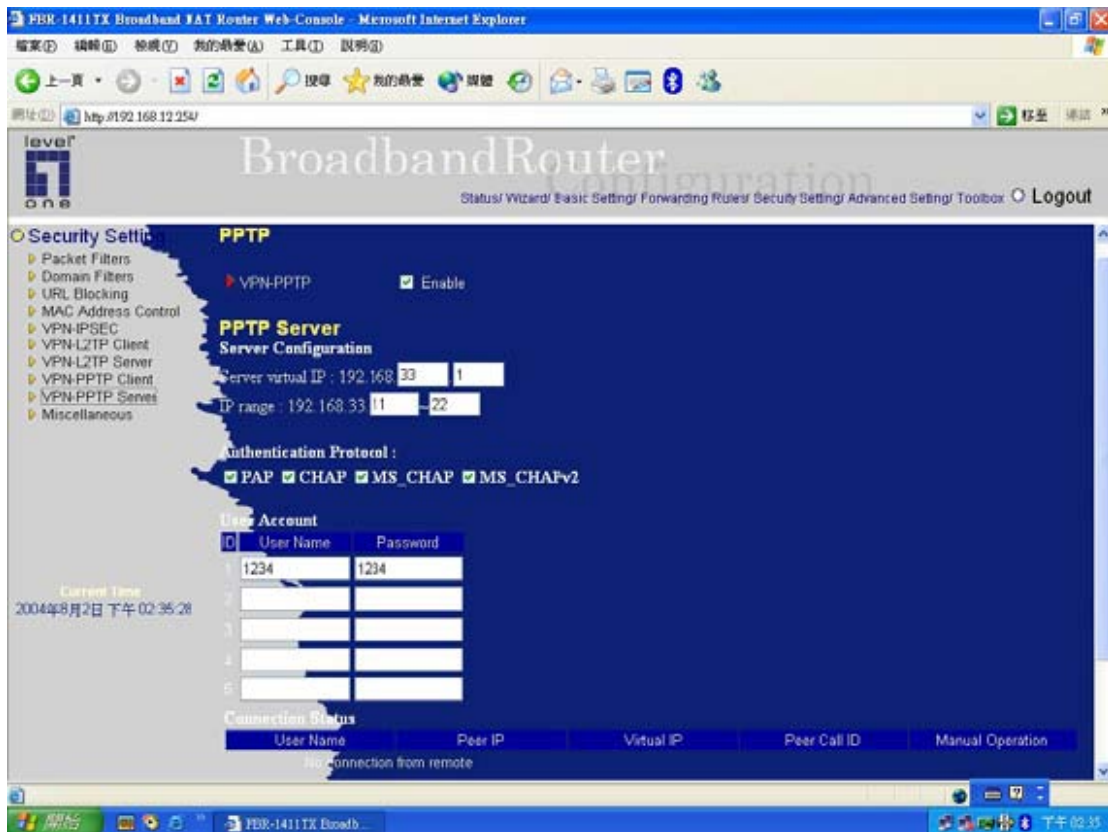
WAN IP： 218.167.10.219

LAN IP： 192.168.123.254

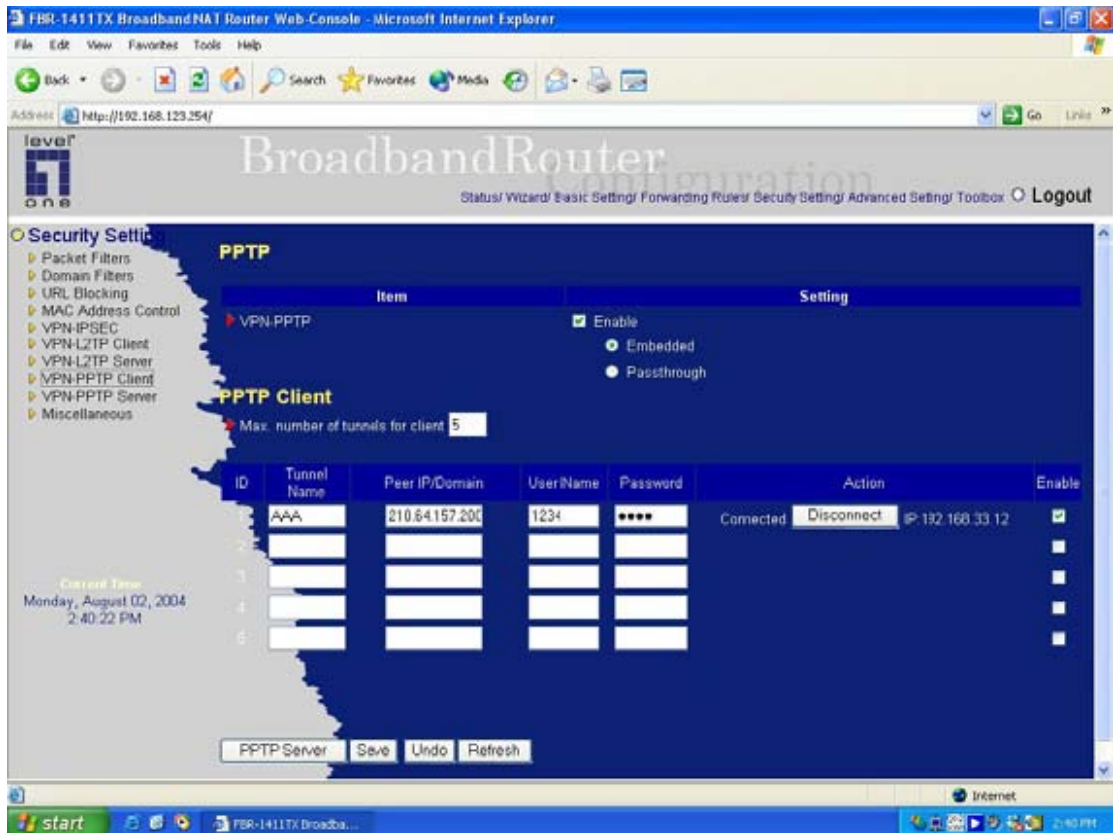
LAN IP子網路遮罩: 255.255.255.0

安裝：

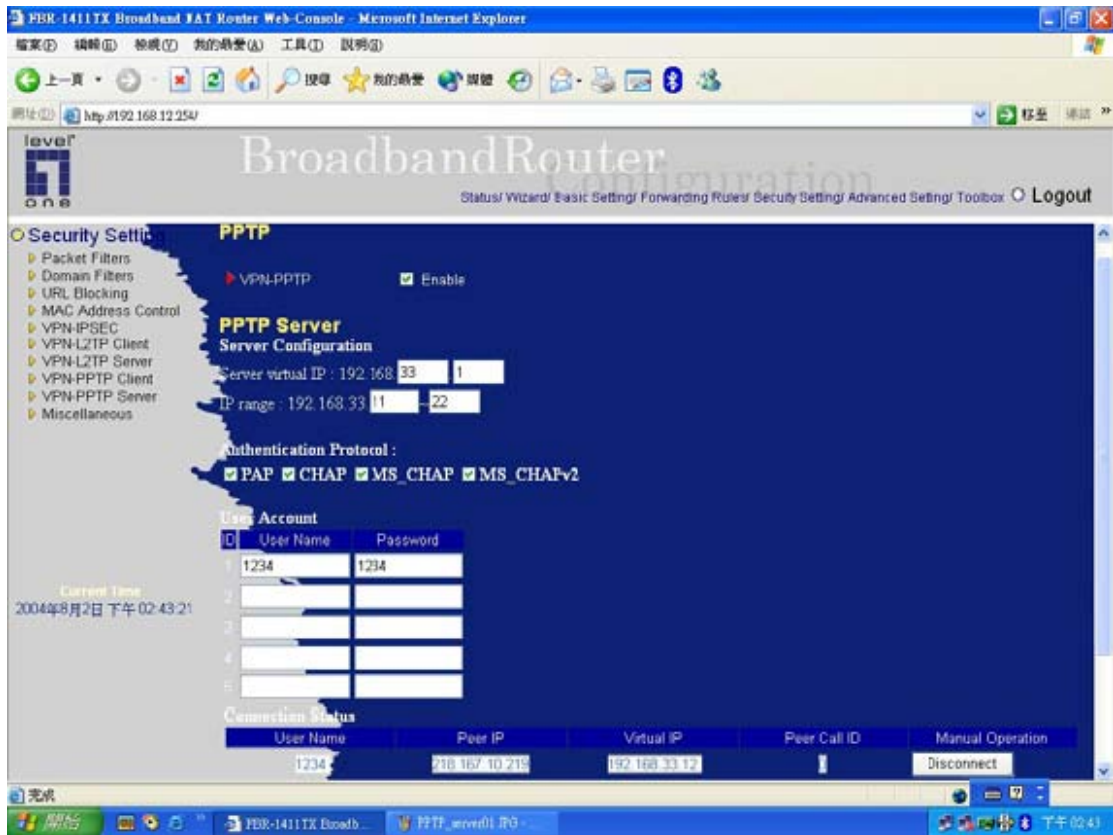
FBR-1411TX PPTP VPN用戶到FBR-1411TX PPTP VPN伺服器



1 設定FBR-1411TX PPTP VPN伺服器並啓用它。



2 設定FBR-1411TX PPTP VPN用戶端依照FBR 1411TX PPTP VPN伺服器去設定並啓動它，使您能成功連線。



3 檢查成功連線在FBR-1411TX PPTP伺服器 and 用戶端連線的狀態。

Advanced Setting

- Routing Interface by IP
- Routing Interface by Domain
- System Log
- Dynamic DNS
- SNMP
- Routing
- System Time
- Schedule Rule

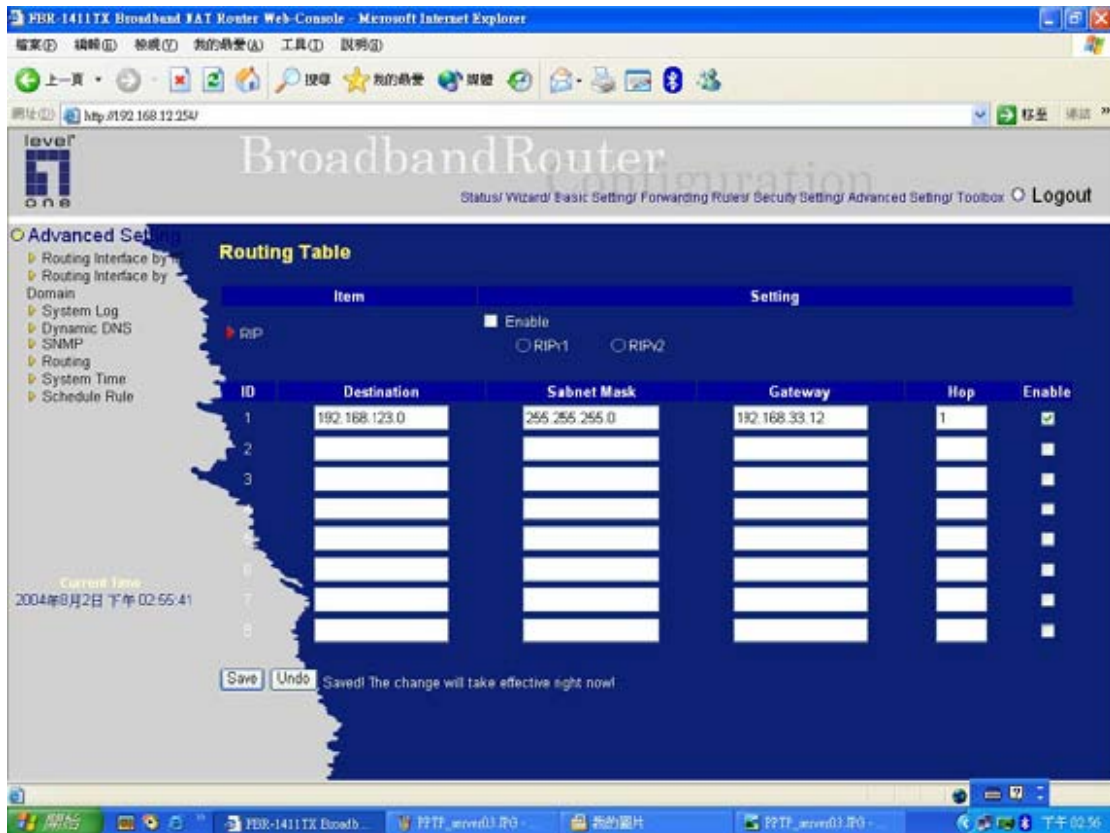
Routing Interface by IP

ID	IP	Interface	Enable
1	192.168.12.0	PPTP 1	<input checked="" type="checkbox"/>
2	0.0.0.0	PPPoE 1	<input type="checkbox"/>
3	0.0.0.0	PPPoE 1	<input type="checkbox"/>
4	0.0.0.0	PPPoE 1	<input type="checkbox"/>
5	0.0.0.0	PPPoE 1	<input type="checkbox"/>
6	0.0.0.0	PPPoE 1	<input type="checkbox"/>
7	0.0.0.0	PPPoE 1	<input type="checkbox"/>
8	0.0.0.0	PPPoE 1	<input type="checkbox"/>
9	0.0.0.0	PPPoE 1	<input type="checkbox"/>
10	0.0.0.0	PPPoE 1	<input type="checkbox"/>

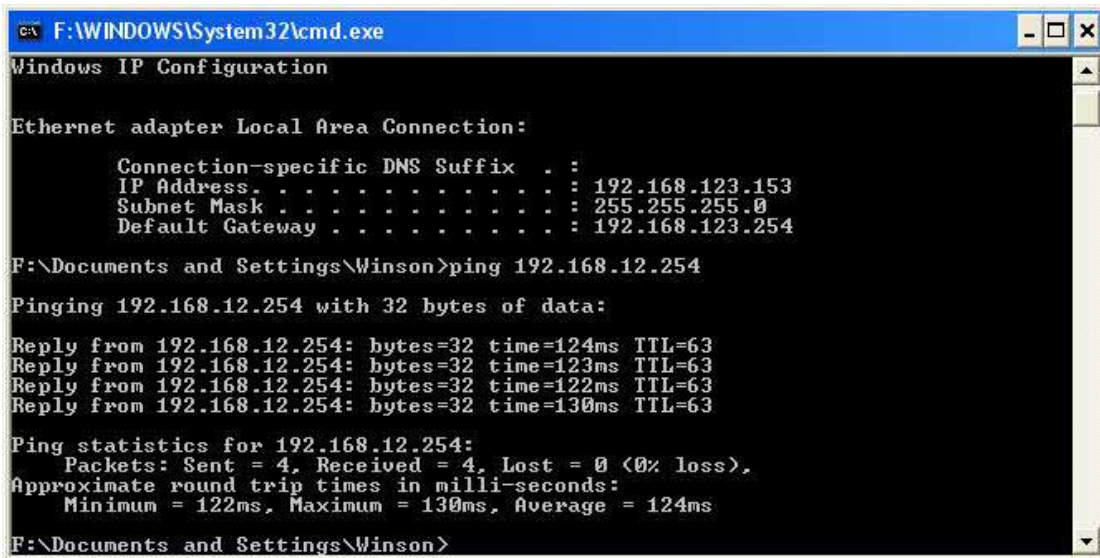
Current Time
Monday, August 02, 2004
2:46:50 PM

Save Undo Saved The change will take effective right now!

增加路由介面使PPTP VPN用戶端可使用IP來連線。



新增FBR-1411 PPTP VPN伺服器使用路由表透過一個固定IP來連線它。



連接FBR-1411TX PPTP VPN用戶192.168.123.153，連線測試PING 192.168.12.254。