



POW-2420

60W 24VDC Industrial Power Supply, DIN-rail -20 to 60C

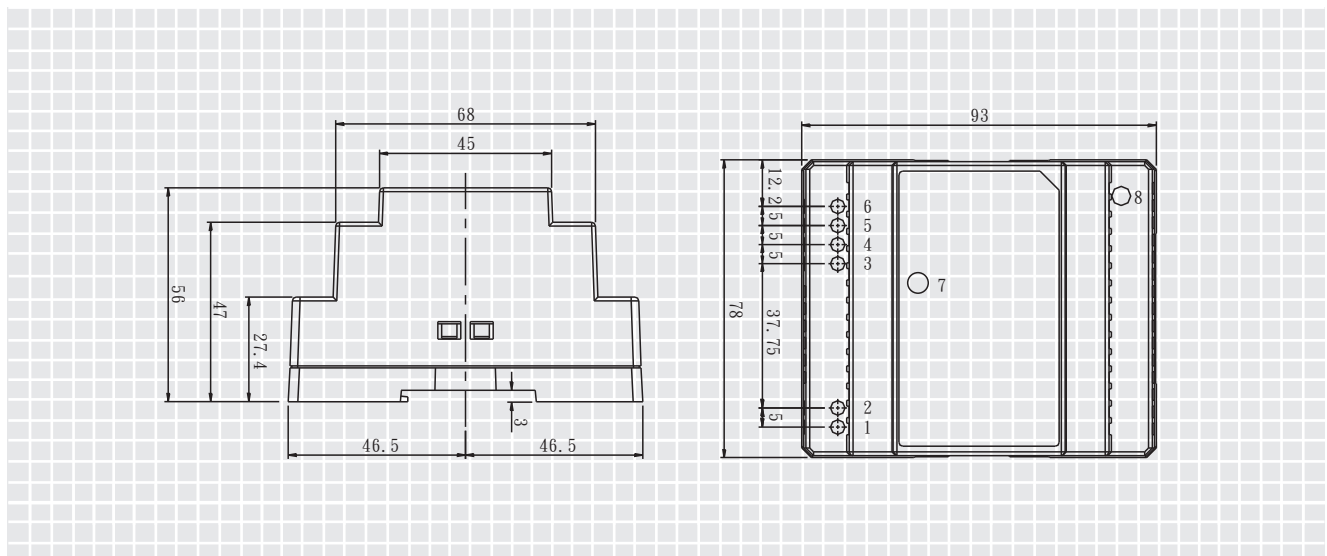
The POW-2420 is a DIN-rail industrial power supply is ruggedized, universal input voltage range and full compliance with all important safety and EMC standards. It can be operated at full load across an ambient temperature range of -20 to 60 Celsius degree without need of additional cooling to guarantee quality for harsh industrial environment.

Features

- Universal AC Input at Full Range
- Short Circuit, Overload / Over Voltage Protection
- Fanless Design
- DIN rail installation
- UL508 Approval
- Isolation Class II
- 100% Full Load Burn-in Test

Diagrams

Unit: mm



Specifications

Output DC	24V
Output Current	2.5A
Output Power	60W
Input Voltage	88-264 VAC & 124-370 VDC
MTBF	24.6 years

Dimension & Weight	78 x 93 x 56mm @ 0.3kg
Operation Temperature	-20 to 60 Celsius
Operation Humidity	20 to 90% RH Non-condensing
Safety Approval	IEC60068, EN60950-1, UL60950-1, EN55011, EN55022 (CISPR22) Class B, EN61000-3-2, EN61000-3-3, EN61000-4-2/3/4/5/6/8/11, EN61000-6-2, EN61204, EN55024

Order Information

POW-2420 - 60W 24VDC Industrial Power Supply, DIN-rail -20 to 60C

Package Contents

POW-2420