



48 GE + 2 GE SFP Web Smart Switch



GSW-4876

H/W Version: 3

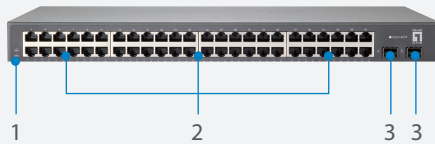
Product Overview

The LevelOne GSW-4876 is an intelligent 50 ports Gigabit Web Smart Switch, provides 48 x 1000Base-T ports and 2 x Gigabit SFP (Small Form Factor Pluggable) slots. The switch supports a flexible web-based management interface, SNMP for both IPv4 and IPv6 as well as layer 2 management features. Despite its affordable pricing, the GSW-4876 is equipped with many advanced features such as Internet Group Management Protocol (IGMP) snooping, VLANs, Spanning Tree, Link Aggregation Control Protocol (LACP), QoS with 8 priority queues, UPnP for auto-discovery and configure devices, Storm Control for protects against broadcast/multicast/unknown

unicast and else more. The GSW-4876 offers a complete web management solution for small-to-median businesses.

Cost-effective Solutions for IPv6 Deployment

Featuring the most comprehensive set of IPv6 migration technologies, including stateless auto configuration which simplifies IP address assignment by creating a plug-and-play environment in the absence of a DHCP server and the implementation of dual IP stack that allows not only for running both IPv4 and IPv6 applications in parallel but also for facilitating gradual transition between these applications.



1. LED Indicators
2. 10/100/1000Mbps Ports
3. SFP Slot
4. Internal Power Socket

Key Features

- 48 Gigabit Ethernet ports and 2 Gigabit SFP slots
- Supports IGMP allows to optimize video transmission
- IEEE 802.1Q VLAN Tag allows network segmentation to enhance performance and security
- Supports IPv6 network operation
- IEEE 802.3ad LACP for auto port aggregation of up to 25 groups, 8 ports per group
- IEEE 802.1s Multiple Spanning Tree Protocol (MSTP) and port mirroring
- IEEE 802.1p QoS with 8 priority queues
- Universal Plug and Play (UPnP) for auto-configure network devices
- Supports Simple Network Time Protocol (SNTP) time server
- 10K jumbo frames to increase data transfer rates

Works Well With



GNC-0112
Gigabit Ethernet PCIe Card



GNS-1001
1-Bay Gigabit Network Storage

Technical Specifications

Hardware

Network Interfaces

48 x 10/100/1000Base-T with auto-negotiation
2x Mini-GBIC ports (shared)

Standard

IEEE 802.3 10Base-T (Ethernet)
IEEE 802.3u 100Base-TX (Fast Ethernet)
IEEE 802.3ab 1000Base-T (Gigabit Ethernet)
IEEE 802.3ad Link Aggregation Control Protocol
IEEE 802.1D MAC Bridges
IEEE 802.1p QoS
IEEE 802.1Q VLAN Tag
IEEE 802.1w Fast Spanning Tree
IEEE 802.1s Multiple Spanning Tree Protocol
IEEE 802.1X authentication
IEEE 802.1ab Station and Media Access Control Connectivity
Discovery (LLDP)
IEEE 802.3x Flow Control and Back Pressure

Power Supply

Power consumption: 50 Watts for System Power
Voltage: 100 ~ 240 VAC, 50-60 Hz, 2.0A

LED Indicators

Power
Link/Port Activity

Dimension (W x D x H mm)

440 x 250 x 44 mm

Weight (g)

2980 g

Temperature (°C)

Operating: 0 ~ 50°C
Storage: -40 ~ 70°C

Humidity (Noncondensing)

Operating: 10 ~ 90%
Storage: 5 ~ 90%

Approval

CE, FCC Part 15 Class A

MTBF

System MTBF: 66,191

Software

Performance

Mac Address Table Size: 8K
Buffer memory: 512K Byte
Flash: 16MB
Jumbo Frames: 10K
Backplane: 100Gbps

Security

Port Security: Static and dynamic
Supports IEEE 802.1X port based and MAC-based
EAPOL transparent
MAC authentication
Web authentication
HTTPS/SSL
SSH v1.5/v2.0
MAC Filter/IP Filter
DHCP Snooping

Layer 2 Feature

Spanning Tree Protocol:

- IEEE 802.1D Spanning Tree Protocol (STP)
- IEEE 802.1w Rapid Spanning Tree Protocol (RSTP)
- STP Auto Edge

Auto-negotiation for port speed and duplex mode
Flow Control:

- IEEE 802.3x for full-duplex mode
- Back-Pressure for half-duplex mode

VLANs:

- Supports 4K IEEE 802.1Q VLANs
- Port-based VLANs
- Voice VLAN
- Private VLAN

Link Aggregation:

- Static Trunk
- IEEE 802.3ad Link Aggregation Control Protocol
- Trunk groups: 25 trunk links: Up to 8 ports

IGMP Snooping:

- IGMP v1/v2/v3 snooping
- IGMP immediate leave
- Supports jumbo frames up to 10 KB

QoS

Priority Queues: 8 hardware queues per port
Traffic classification based on IEEE 802.1p CoS, DSCP,
Supports WRR, Strict scheduling, or hybrid mode
Rate Limiting

- Ingress: Resolution 16 Kbps
- Egress: Resolution 16 Kbps

Management

Switch Management:

- Web management
- SNMP v1/v2/v3

Firmware and Configuration: Upgrade via TFTP/HTTP

Supports DHCP Client

Supports LLDP (802.1ab) and LLDP-MED

RMON (groups 1, 2, 3, and 9)

Port mirroring: one to one and many to one

Event log: Local flash, syslog, remote server (RFC3164) and SMTP

(RFC821)

SNTP (IPv4/IPv6)

Loop detection and prevention

UPnP

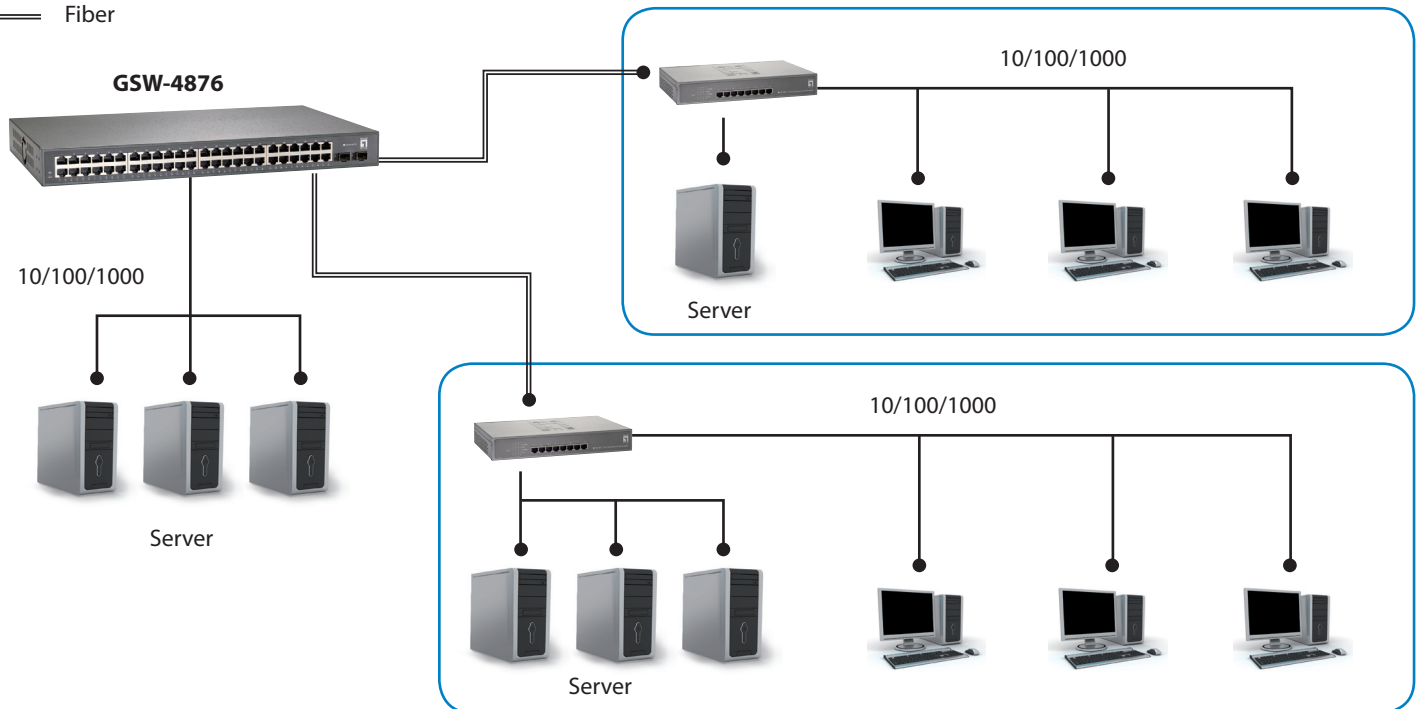
Cable diagnostics

IPv6 management:

- IPv4/IPv6 dual protocol stack
- IPv6 address types: Unicast/multicast
- IPv6 Ping/tracert
- ICMPv6 and ICMPv6 redirect
- IPv6 neighbor discovery
- IPv6 stateless auto config/manual config
- IPv6 Telnet/SNMP/HTTP/DHCP

Product Diagram

— Ethernet Cable (RJ 45)
= Fiber



Order Information

Package Contents

GSW-4876: 48 GE + 2 GE SFP Web Smart Switch

GSW-4876

Power Cord

Quick Installation Guide

19" RackMount Kit

Rubber Pad Kit

CD - User Manual