

# Datasheet\_GSW-2452T

## 19" 24-port Gigabit Switch

**LevelOne's** new Gigabit Ethernet Switch, GSW-2452T is equipped with 24 10/100/1000 Mbps-port Ethernet connections. Each RJ-45 port can auto negotiate for the best possible performance running either in full or half duplex mode. Auto-MDIX is also supported on all ports which allows uplinking to another switch-free cross-over or straight cable selection. Half-and full-duplex flow control prevents packets from being dropped under heavy loading. The GSW-2452T supports "store and forward" mode of operation to ensure that only whole packets with a good CRC are passed to the destination.

GSW-2452T gigabit switch is "Plug-&-Play". It does not require software configuration. Users can immediately use any of the features of this product simply by attaching the cables and turning on the power. For instant error detection, the switch is equipped with a full range of LEDs to help you monitor and troubleshoot problems on your network. Offering compact design (441 mm x 196 mm x 44 mm) the GSW-2452T supports reliable operations in extreme operating environments.

Based on familiar, proven Ethernet technology, GSW-2452T provides 48Gbps of aggregate bandwidth to improve network performance and throughput for multi-media, video streaming and real-time broadcast applications to ensure current investment to meet the future requirement.



**GSW-2452T**

### Key Features

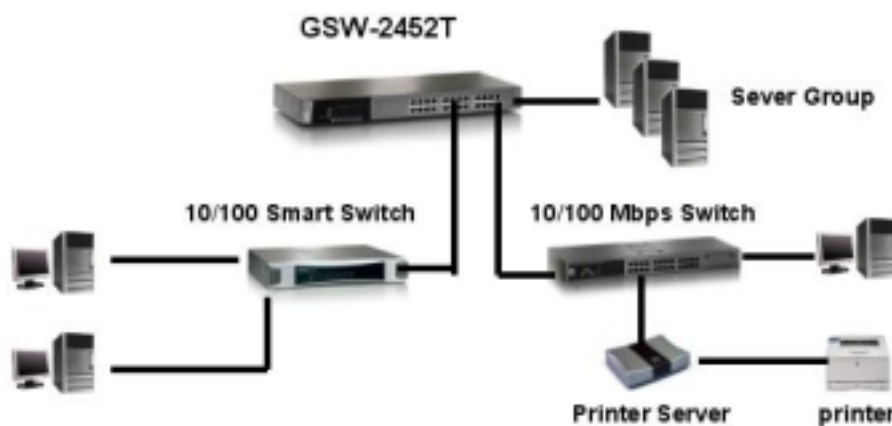
- Complies with IEEE 802.3ab, IEEE 802.3 and IEEE 802.3u standard
- 48Gbps internal switching bandwidth
- Supports Auto-negotiation on all ports
- Supports Auto MDI/MDIX
- Store –and-forward switching ensures error-free transmission
- Wire-speed packet filtering and forwarding rate
- Supports Jumbo Frame (Up to 9K bytes)
- Full duplex IEEE 802.3x flow control
- Half-duplex back pressure flow control
- Supports Plug-and-Play, nothing to configure
- "At-a-glance" LEDs for port and system status monitoring
- 19", 1U rack-mountable size

# Datasheet\_GSW-2452T

## Technical Specification

- **Standards Compliance**
  - IEEE 802.3 (Ethernet)
  - IEEE 802.3u (Fast Ethernet)
  - IEEE 802.3ab (Gigabit Ethernet)
  - IEEE 802.3x Flow Control
- **Ports**
  - 24 x 10/100/1000 Base-T RJ-45 ports
- **Forwarding Mode**
  - Store and Forward
- **Cabling**
  - 10base-T: 2-pair UTP/STP Cat.3 or higher, Up to 100 m
  - 100Base-TX: 4-pair UTP/STP Cat. 5, Up to 100 m
  - 1000Base-TX: 4-pair UTP/STP Cat.5, Up to 100 m
- **MAC Address Table**
  - 8K entries
- **RAM Buffer**
  - 512KB
- **Flow Control**
  - Half Duplex: backpressure
  - Full Duplex: pause frame
- **Jumbo Frame**
  - 9KB
- **LEDs**
  - Per Device: Power
  - Per RJ-45 port: Speed(10/100/1000Mbps), Link/Act
- **Power Input**
  - 100~240VAC, 50/60Hz
- **Power Consumption**
  - 45 Watts (max)
- **Temperature**
  - Operating: 0~40° C (32~104° F)
  - Storage: -30~90° C (-22~194° F)
- **Humidity**
  - Operating: 10% ~ 90% non-condensing
  - Storage: 5%~90% non-condensing
- **Dimension**
  - 441mm(W) \* 196mm(D) \* 44mm(H)
- **EMI and Safety**
  - FCC, CE

## Product Diagram



GSW-2452 Diagram

## Ordering Information

- GSW-2452T: 24-Port Gigabit Switch