

## GSW-0508

### Great performance in a small package

LevelOne's GSW-0508 is a 4-port Gigabit switch that also has 1 SFP port. All ports offer speeds up to 1000 Mbps so it has never been easier to share large files and quickly access the internet. The small desktop footprint makes this stylish device the perfect fit for office administrators that wish to expand their network to remote offices, while also saving space.

### SFP = Small Form Pluggable

The added Small Form Pluggable port allows users to add fiber optic functionality to their network. Users can select any SFP transceiver offering exceptional network distances at Gigabit speeds. Both multi-mode and single-mode transceivers are compatible with GSW-0508.

### Smart, fast, and safe

With Nway auto-negotiation, the GSW-0508 automatically senses the fastest speeds by which connected devices communicate. This means all attached computers can take full advantage of the 1000 Mbps data transfer rates in a flexible, yet secure networking environment.

### Plug and play, you're on your way

Like all LevelOne networking devices, GSW-0508 is easy to install and use. No user configuration is required so all you need to do is connect your devices and your network is ready to go.

The SFP port is engineered with a simple click and lock mechanism that firmly holds the transceiver in place.



### Related Products



### 48-Port 10/100 Rackmount Switch + 2 Gigabit Ports + 1 SFP Port

GSW-5150



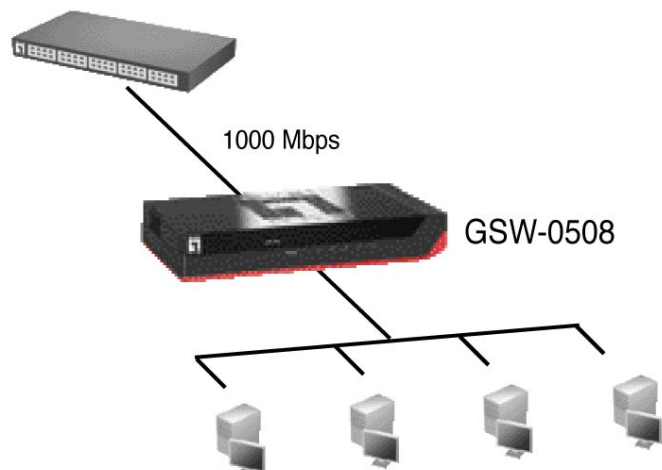
### Multi-mode SFP Transceiver

GVT-0300

## Key Features

- 4 10/100/1000 Mbps and 1 SFP port
- Large 10 G switching bandwidth
- Supports Auto-negotiation and Auto-MDI/MDI-X on all ports
- Supports full-duplex IEEE 802.3x flow control
- Store-and-forward switching architecture
- Complies with IEEE 802.3, 802.3u and 802.3ab, and 802.3z standards
- Wire-speed packet filtering and forwarding rate
- 1KB MAC Address and 104KB buffer memory
- Wall-Mount Kit

## Product Diagram



## GSW-0508

## Technical Specifications

**Physical Connections**

4 x 10/100/1000 Mbps RJ-45 N-way ports  
1 x SFP port (for fiber optical connections)

**NWay Protocol Support**

1000Mbps: Full/Half Duplex

**Switch Backplane**

10 Gbps

**Architecture**

Store-and-forward

**Mac Address**

1K MAC address table

**Jumbo Frame**

16KB Jumbo Frame

**IEEE Standards**

IEEE 802.3 10Base-T Ethernet  
IEEE 802.3u 100Base-TX Ethernet  
IEEE 802.3ab 1000Base-T Ethernet  
IEEE 802.3z 1000BaseLX/SX  
IEEE 802.3x Flow control and Back Pressure

**Power Supply**

External power adapter 12VDC/1A

**LED**

Power, Link/Acti

**Operating Environment**

Temperature: 0°C ~ 40°C  
Humidity: 10% ~ 90% (Non-condensing)  
Storage: 0°C ~ 40°C

**Dimensions**

154.5mm (W) x 85mm (D) x 26mm (H)

**Certification**

FCC Class A, CE

## Package Contents

[1] GSW-0508	[1] User Manual
[1] Power Adapter	[1] Wall-Mount Kit

## Ordering Information

GSW-0508: 4-Port TP + 1-Port SFP Gigabit Ethernet Switch



# 4-Port TP + 1-Port SFP Gigabit Ethernet Switch

Hardware  
Version 1.0

**GSW-0508**