



## 2-Bay Gigabit Network Storage



GNS-2000

H/W Version: 1

### 2-Bay Gigabit Network Storage, a powerful new multimedia server for the home or small office

Are you looking for an easy and cost-effective solution to greater storage capacity? With hard disk drives dropping in cost, now is the best time to pick up a NAS solution that will last. Instead of keeping all your files on a single PC, now it's easier than ever to share movies and music to all computers on the network.

### Network storage, and so much more

Just plug in up to 2 compatible Hard Disk Drives (not included) into the GNS-2000 and you'll have an optimal storage solution with network-wide data access. The built-in Gigabit Ethernet port makes sharing data across multiple computers fast and easy, even large high-definition files.

### Advanced Media Sharing

For storage and sharing, the 2-Bay Gigabit Network Storage Device from LevelOne NAS provides all the rich multimedia features that people expect from a high-performance NAS device: iTunes Server, BitTorrent Downloads, CIF/SMB sharing, FTP access, DNLA media server, low power-consumption, quiet operation, and much more. And with a pair of high capacity drives, you'll have plenty of space to share all your movies and music to every room in the house.



1. LED Indicators
2. Power Switch
3. Power Jack
4. Reset Button
5. USB Eject Button
6. USB x 2
7. LAN Port

### Key Features

- Two 3.5 inch SATA Disk Storage Drives
- Gigabit Ethernet (1000 Mbps) file transfer speeds
- Two High Speed USB 2.0 Host Ports for extra storage
- Supports HTTP, FTP and Bit-Torrent
- Share Files using FTP Server or Windows File Sharing / Samba
- Supports JBOD and RAID 0/1
- Built-in UPnP, Music Broadcast and iTunes Media Servers
- Support Printer Server, Photo Album
- Supports Windows 2000/XP/Vista/2008 server/7/ Linux/MAC OSX

### Relate Products



**FNS-1020**  
1-Bay Simple Network Storage



**GNS-4000**  
4-Bay SATA NAS

## Technical Specification

### Hardware Specification

**CPU:**

Marvell 88F5182, 500MHz

**Memory:**

64M Bytes SDRAM

**Flash:**

16M Bytes flash memory

**LAN:**

1x 10/100/1000 Mbps Auto-MDIX RJ45 Port  
Support Giga LAN, auto-negotiation, auto MDIX

**HDD:**

Supports two SATA II 3.5" HDD

**USB:**

Two USB 2.0 Host

**RAID:**

Support Soft Raid 0, 1 and LVM (JBOD)

**LED: 8 LED**

(Ready/Status, LAN, Disk Act, Disk Full, Disk 1, Disk 2, USB 1, USB2)

**Switch:**

Power on/off switch

**Power:**

12V/5A External Power Adapter

### Firmware Specification

**Operation System:**

Linux kernel: 2.6.12

**Networking TCP/IP:**

HTTP, HTTPS, FTP, FTPS

**File Sharing Protocol:**

CIFS/SMB over TCP/IP, NFS

**Network Client:**

Windows 98/ME/NT/2000/2003/XP/Vista/XP/2008 server /  
Windows 7, Mac OSX, Linux, Unix

**LAN:**

Jumbo frame setting (9000)

**File System:**

Journaling file system XFS (for internal HDD)

FAT16/32 (for USB device)

NTFS Read (for USB device)

**Disk Management:**

Format/Prepare internal HDD (for XFS)

Format/Prepare/Partition USB device (for FAT32, can  
partition up to 4 partitions)

Disk Scan (Manual/Schedule)

Disk S.M.A.R.T (Manual/Schedule)

Disk Usage (Status Bar)

HDD Standby Mode

Disk Full Alarm

**User Management:**

User account: 255

Disk Quota by user

Password authentication

**Group Management:**

Group account: 255

Group member management

Admin group for administrator

**Share Folder:**

Share folder: 255

Share folder access right management (by group)

**Log:**

System/Event Log

Disk Log

Language Support:

Unicode support for CIFS

Multiple language support for FTP/HTTP

System Function

E-Mail Alert

Date/Time/Daylight

NTP

**Vista Support:**

LLTD

DDNS:

Dynamic DNS

**Printer Server:**

Network printer sharing

IPP (Internet print protocol)

**Media Function:**

Media Server (UPnP/DLNA)

- Photo

- Audio

- Video

**iTunes Server:**

Music Broadcast

**Backup:**

Data backup without utility on PC

- Full Backup

- Incremental

- Synchronize

Server Backup/Client Backup (Schedule)

Driver Backup (Internal HDD vs. USB HDD)

UP to 10 backup jobs

**Recycle Bin:**

For each share folder

FTP

FTP

FTPS

**Download Manager:**

Bit Torrent (P2P) download

FTP download

HTTP download

**HDD format:**

Single Disk Mode

JBOD/LVM

RAID

Raid 0

Raid 1

Add the second HDD any time without format

Auto rebuilding

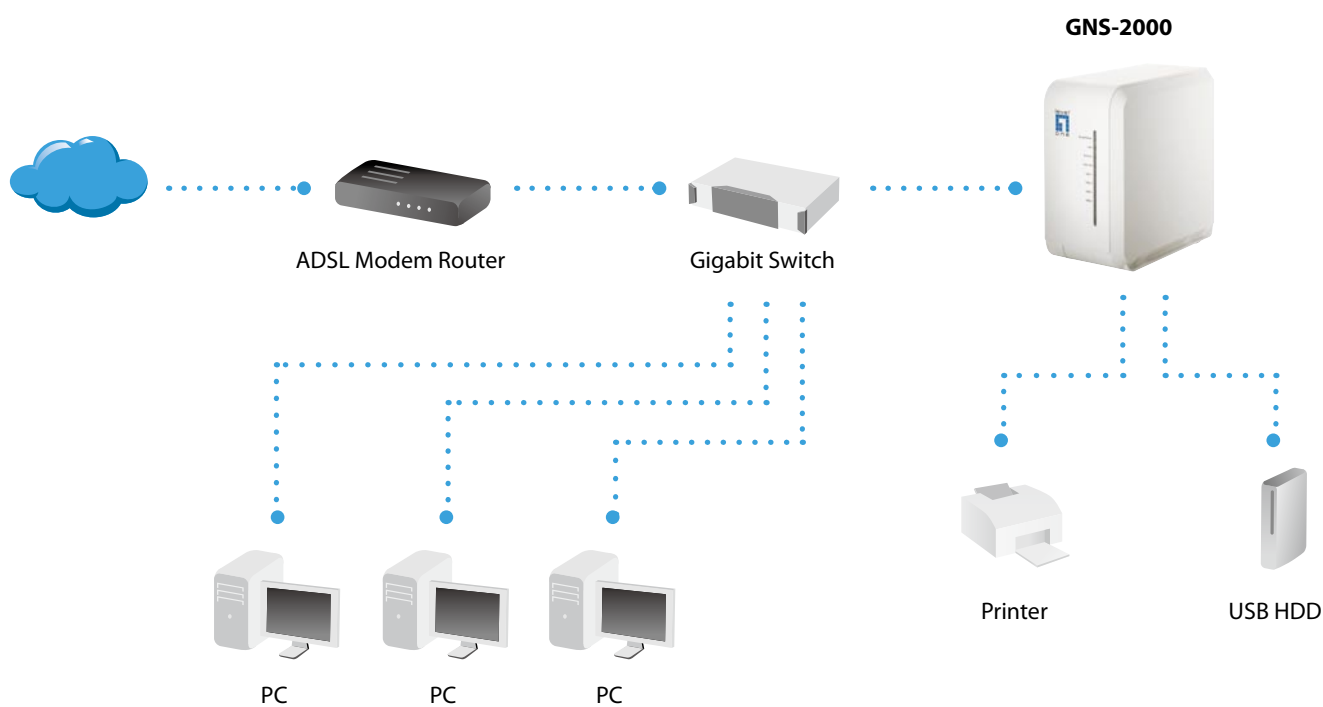
**Samba:**

Samba version: 3.0.22 or above

**Storage:**

FTP/Samba/Windows File Sharing Server

## Product Diagram



## Order Information

### Package Content

### **GNS-2000:** 2-Bay Gigabit Network Storage

GNS-2000  
Ethernet Cable  
Power Cord  
Quick Installation Guide  
CD Manual / Utility