

24-Port Fast Ethernet Switch

Product Overview

The FSW-2451 switch provides an ideal solution for small businesses that demand a reliable network switch that provides a high bandwidth interface between file servers and workgroups, departments and offices.

Advanced Networking Features

The LevelOne FSW-2451 is a wire-speed, non-blocking 24 port Fast Ethernet Unmanaged Switch with an internal power supply. It provides a network with an 8K MAC address table, 4.8Gbps backplane throughput, asymmetrical flow-control support for full-duplex network connectivity, auto-negotiation and Auto-MDIX.

The 24-port Fast Ethernet Switch utilizes packet-store-and forwarding switching for error-free data transmissions and IEEE802.3x backpressure flow control to control data flow between the sending and receiving nodes as well as to prevent any data packet loss.

Compact Design

The FSW-2451 is a compact designed network switch. Users can place the switch on any desktop area or mount it in a 19-inch server rack or cabinet by using the included rack-mounting accessory kit.

Quick Configuration and Easy Maintenance

The LevelOne FSW-2451 does not require any software configuration. It is Plug-and-Play enabled for quick set-up and immediate use within the Local Area Network.

The 24 port Faster Ethernet Switch is equipped with a full range of LEDs for instant error detection, networking monitoring and network troubleshooting.



FSW-2451

Key Features

- Provides 24 Fast Ethernet port connections
- Supports a total back plane of up to 4.8Gbps
- Wire-speed and non-blocking forwarding rate
- Supports Auto-negotiation on all ports
- Supports Auto MDI/MDIX on all ports
- Store-and-forward switching for error-free transmission
- Supports full-duplex IEEE802.1x flow control
- Supports half-duplex back pressure flow control
- Plug-and-Play enabled for easy setup and configuration
- Full LED display panel for error detection and network monitoring
- Accessory kit for mounting into a 19" server rack
- Internal power supply

Technical Specification

Network Interface

Standards

IEEE 802.3 10Base-T Ethernet
 IEEE 802.3u 100Base-TX Fast Ethernet
 IEEE 802.3x Flow Control and Back Pressure
 IEEE 802.3 N-Way Auto-negotiation

Network Interface

24x 10/100 Mbps RJ-45 ports

Network Cables

10Base-T: 2-pair UTP/STP Cat.3/4/5, Up to 100 m
 100Base-TX: 2-pair UTP/STP Cat. 5, Up to 100 m

Data Transfer Rate

Ethernet: 10Mbps (Half-duplex)
 Ethernet: 20Mbps (Full-duplex)
 Fast Ethernet: 100Mbps (Half-duplex)
 Fast Ethernet: 200Mbps (Full-duplex)

Switching Protocol

CSMA/CD

Switch Architecture

Store-and-Forward

Backplane Throughput

4.8Gbps

MAC Address Table

8K entries with Auto learning function

Memory

Packet Buffer: 160Kbytes

Status Indicators

Link Activity
 Collision Status
 Port duplex mode
 Power

Physical Specifications

Internal Power Supply

100 ~ 240V AC, 50/60Hz

Power Consumption

25 Watts (max)

Temperature

Operating: 0°C ~ 45°C
 Storage: -30°C ~ 60°C

Humidity

Operating: 10% ~ 90% (Non-condensing)
 Storage: 0% ~ 95% (Non-condensing)

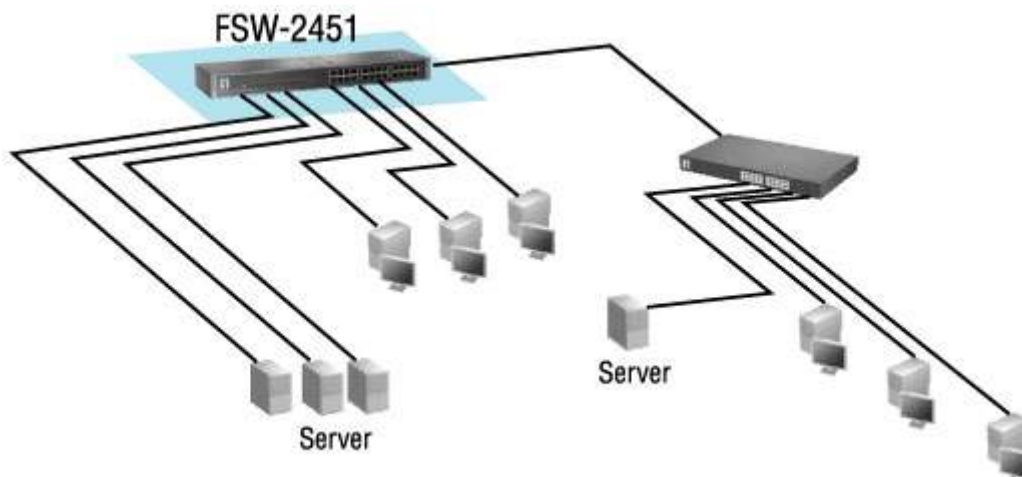
Dimension & Weight

125mm (L) x 440mm (W) x 44mm (H)
 1.39kg

Certifications

FCC Class A
 CE
 RoHS

Product Diagram



Order Information

FSW-2451: 24-Port Fast Ethernet Switch

Package Contents

- FSW-2451
- Power Cord
- Rack-mount Brackets
- User Manual