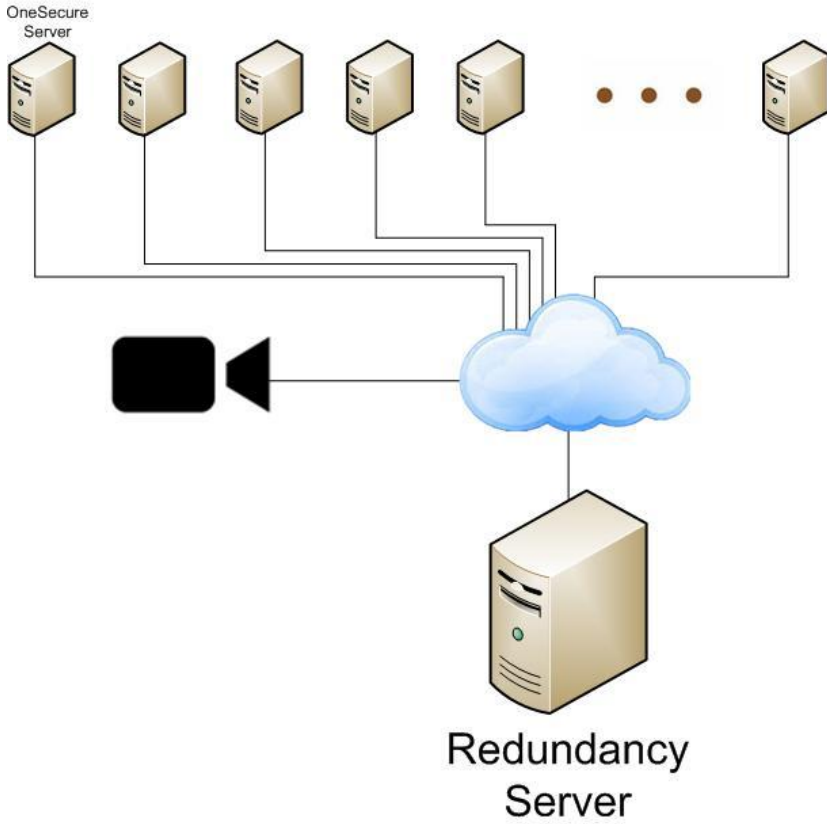


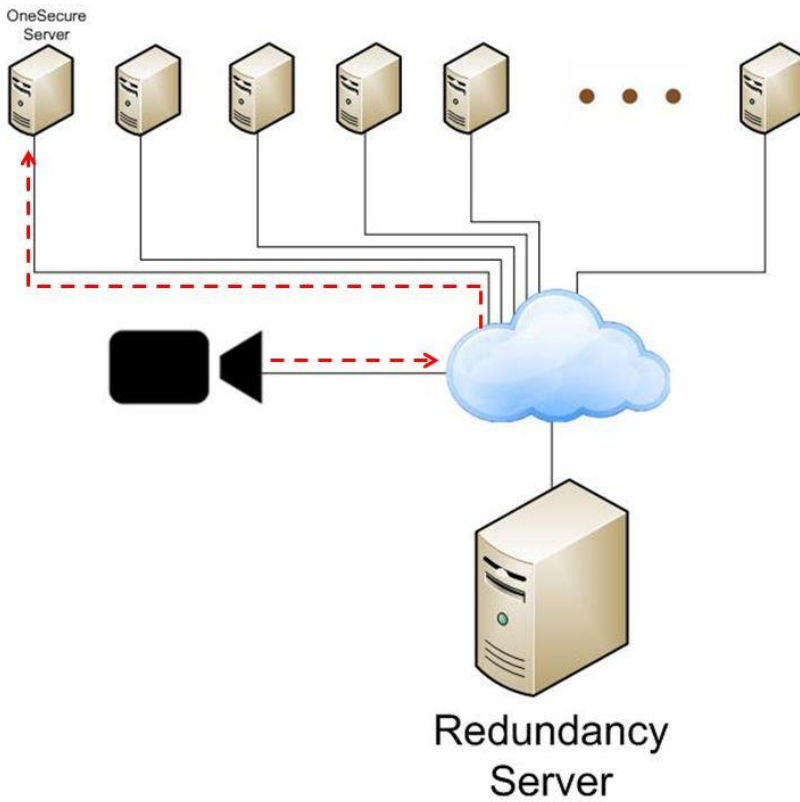
**One redundancy server can do backup for the most 16 OneSecure servers**

Redundancy server can support the most 16 OneSecure servers



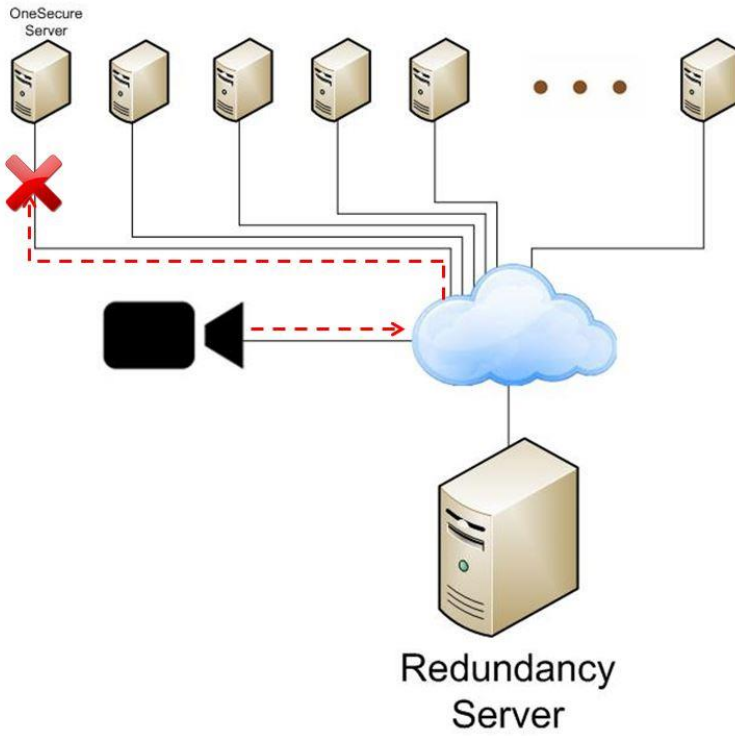
**Redundancy server can monitor if the connection of OneSecure is healthy**

Redundancy server can support the most 16 OneSecure servers



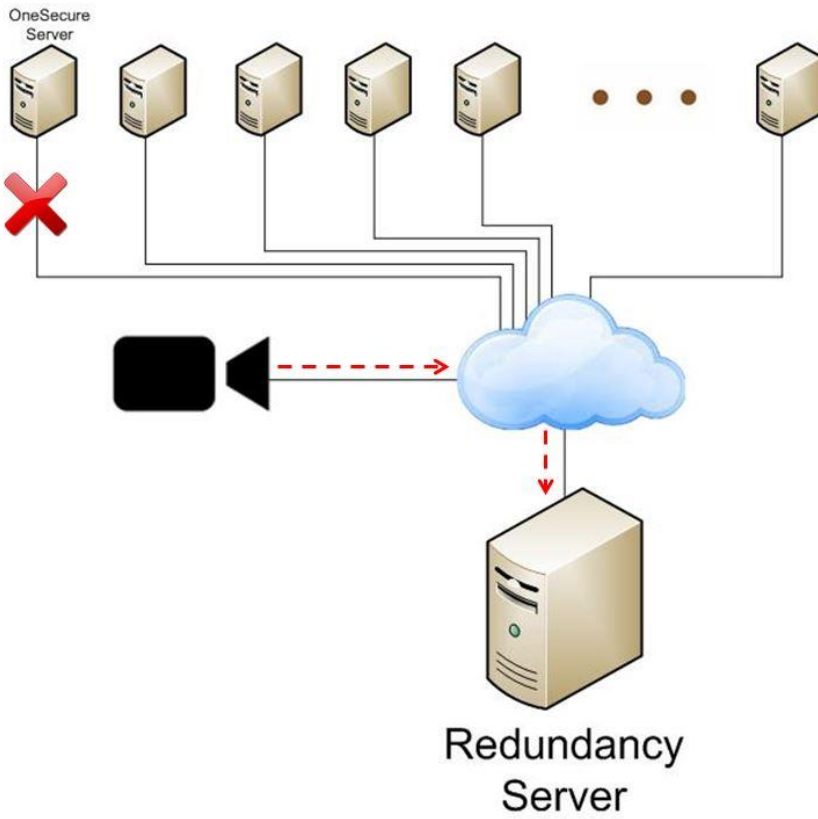
**If for any reason, the server network condition is bad**

Redundancy server can support the most 16 OneSecure servers

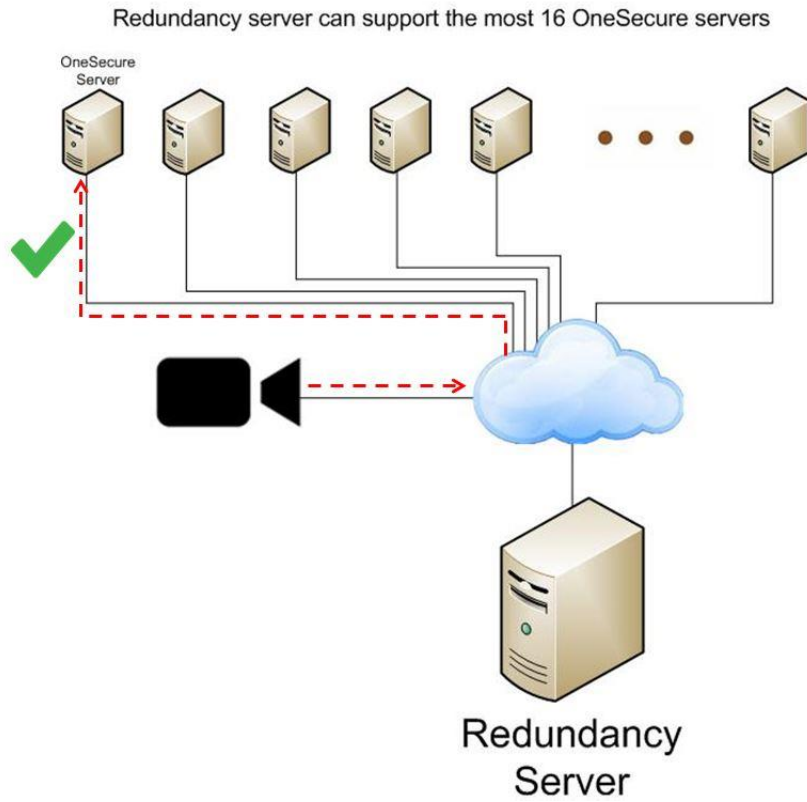


**Redundancy server will take charge of recording**

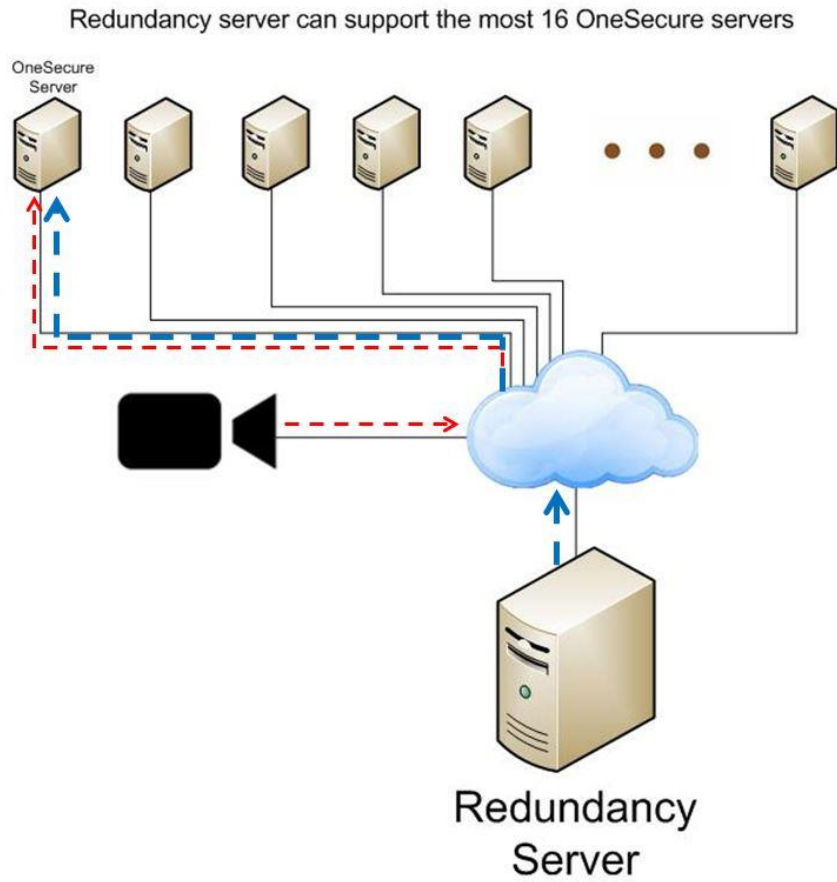
Redundancy server can support the most 16 OneSecure servers



Once redundancy server detects the server is back, it will give back the recording task

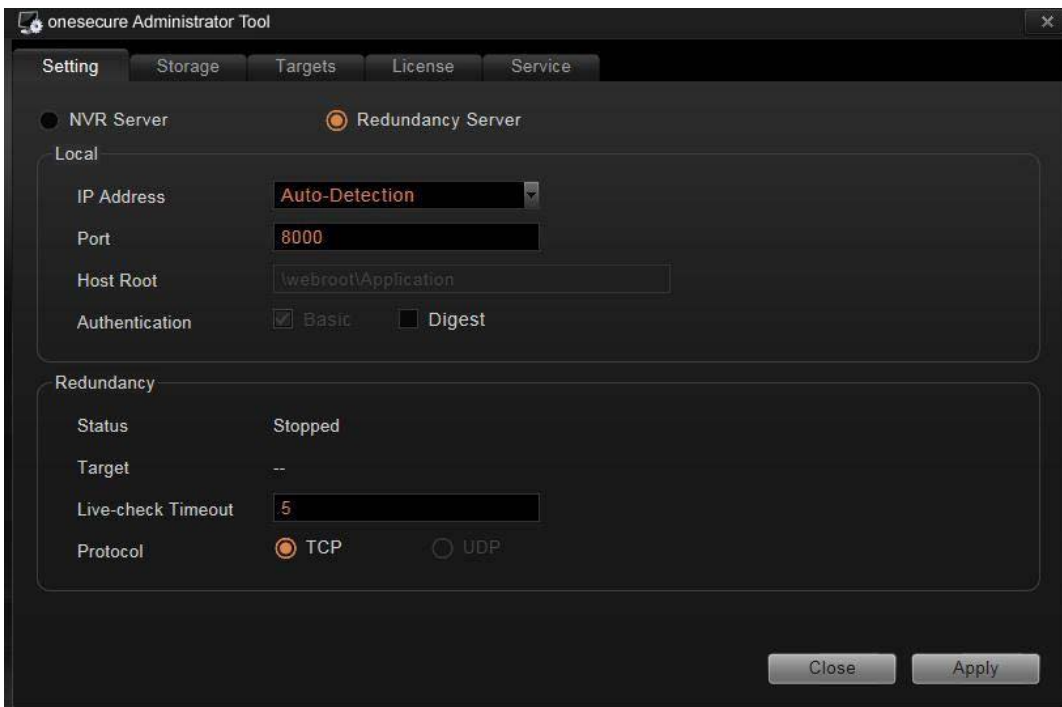
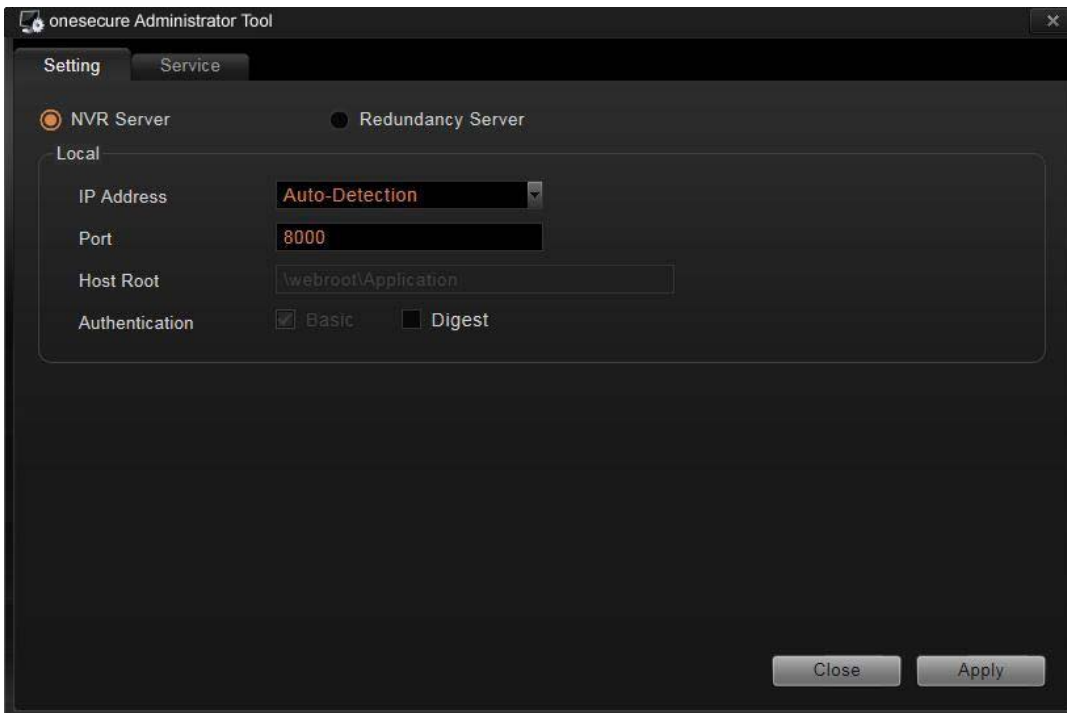


And, redundancy server will also feedback the recordings it just recorded

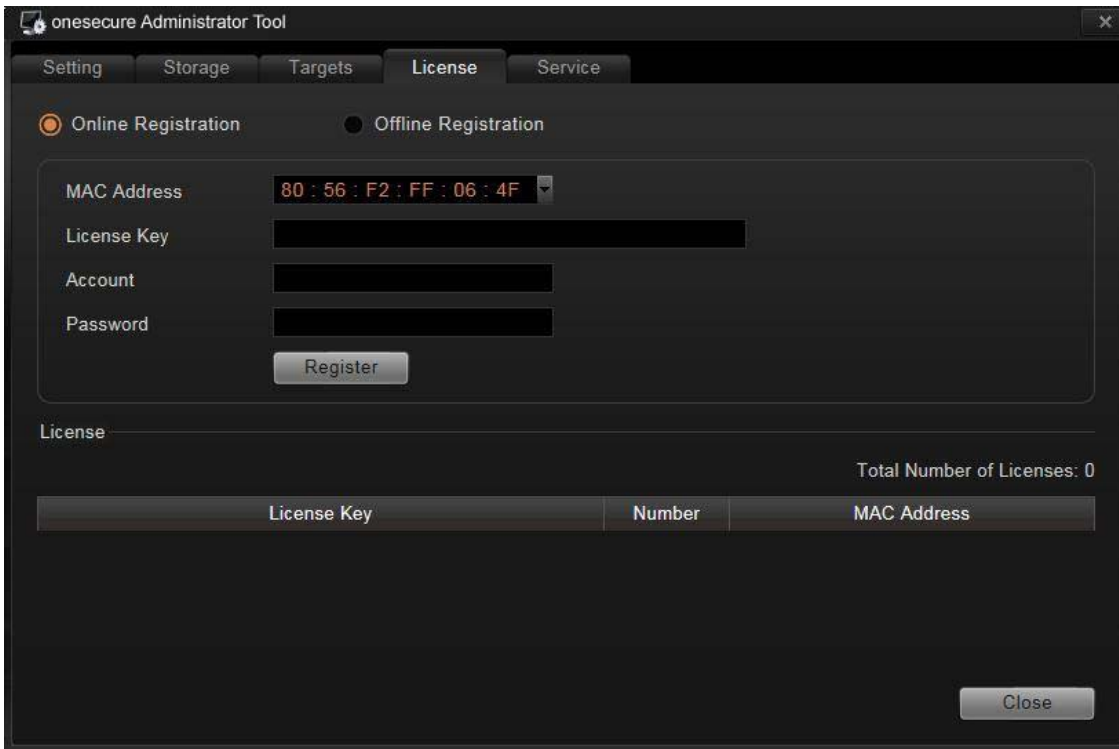


## Interface:

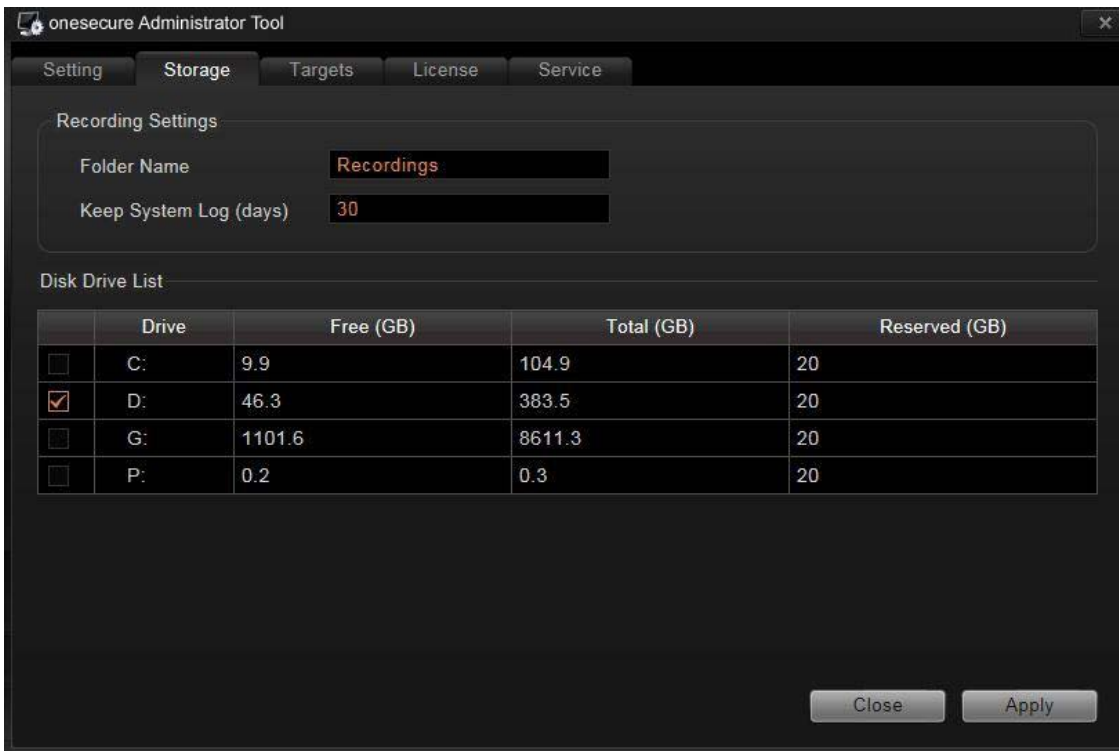
After installing OneSecure server, open Administrator Tool, you can decide if you want to use it as OneSecure server or Redundancy server, of course, you won't be able to be both at time same time:



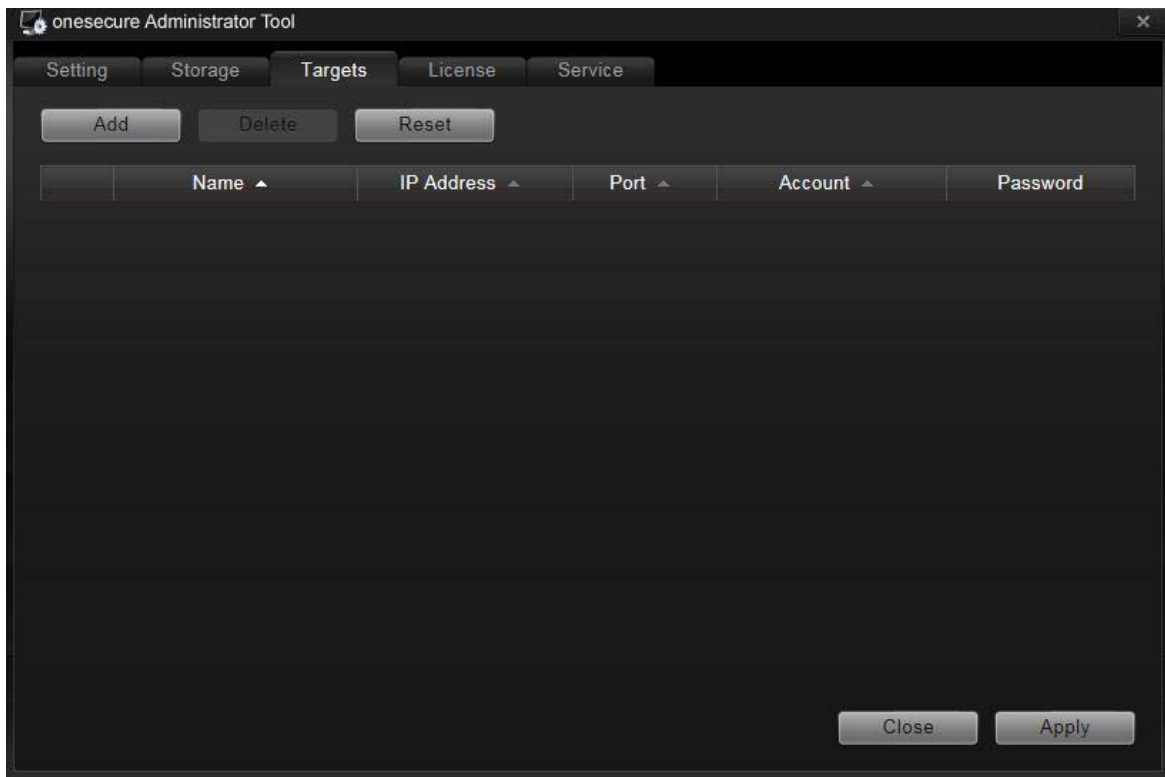
For Redundancy Server using, this is the only interface, so you can activate license on it



Select storage information



And add OneSecure servers which you want to do backup for, the most number is 16



**Q&A:**

**If two OneSecure servers fail at the same time, what will happen?**

One redundancy server can only do backup for one OneSecure server at the same time, so in this case, redundancy server will only do backup for the one who fails first.