



FCS-4044 Version: 1

! Power supply unit is to be ordered separately.

HUBBLE PTZ Dome IP Network Camera, 5-Megapixel, 802.3af PoE, 10X Optical Zoom, two- way audio, Indoor/Outdoor



1

1. Lens
2. Ethernet



2

3

4

3. Power Input
4. Digital Input / Output and Audio-In / Audio-Out

Key Features

- Built-in Micro SDHC/SDXC card slot for local storage
- Weatherproof IP66-rated housing
- 5-Megapixel high-definition resolution
-
- Features WDR (Wide Dynamic Range) to enhance visibility under extremely bright or dark environments
- Supports 350° pan, 180° tilt and 10X optical zoom
- Video compression: H.264, MJPEG
- Removable IR-cut filter for day and night surveillance
- Dual power support: 12V DC/PoE (IEEE 802.3af)
- Free surveillance and CMS (Central Management System) software packages with 64-channel license



Specifications

System Specifications

Standards & Protocols:

IEEE 802.3 10-BASE-T, Ethernet
IEEE 802.3u 100-BASE-TX, Fast Ethernet
IEEE 802.3af Power over Ethernet (PoE)
TCP, UDP, HTTP, HTTPS, DHCP, PPPoE, RTP, RTSP, IPv6, DNS, DDNS, NTP, ICMP, ARP, IGMP, SMTP, FTP, UPnP, SNMP, Bonjour

Image Sensor:

5-Megapixel 1/3.2" Progressive Scan CMOS

Lens:

Zoom, DC iris, Auto focus, f4.9-49mm, F1.8-3.0

Port:

1 x RJ-45 10/100 Mbps PoE port
1 x Line In
1 x Line Out
1 x Power terminal block
I/O terminal block (1 DI/1 DO)
1 x MicroSDHC/ MicroSDXC card slot

Button/Knob:

Reset Button

Indicator:

Power

IR Cut Filter:

Removable infrared-cut filter for day & night function

Shutter Time:

1/5 ~ 1/10,000 sec

Angle of View:

49.69 - 5.83°

Pan/Tilt/Zoom:

Pan range: -175° - 175° (without auto-flip)
Tilt range: 0° ~ 180° (with E-flip)
10x Optical Zoom

Video Compression:

H.264 / MJPEG

Resolution:

5M (2592x1944)

Output Video Format:

RAW

Audio Compression:

G.711

Power Input:

DC12V / 802.3af PoE

Power Consumption:

PoE Class 3 (IEEE802.3af) / 12.95 W (built-in heater and fan on), DC 12V (adapter not included) / 10.36 W (built-in heater and fan on)

Data Rate:

10/100Mbps

Storage Capacity:
SD/MicroSD memory card of up to 64GB

Features

General:

Backup: MicroSDHC /MicroSDXC card slot for local storage

Video:

Image Setting: - Adjustable image size, quality and bit rate
- Configurable brightness, sharpness, contrast, saturation, white balance and exposure
- AGC/AWB/AES
- Back Light Compensation (BLC)
- Wide Dynamic Range (WDR), Basic WDR (74 dB)
- 2D Noise Reduction (2DNR)
Streaming: Up to 2 video streams

Audio:

Streaming: 2-way audio
Input/Output: line input, line output

Performance

Frame Rate (fps):

15 fps at 2592 x 1944; 15 fps at 2048 x 1536; 30 fps at 1920 x 1080; 30 fps at 1280 x 720; 30 fps at 640 x 480; 15 fps at 320 x 240

Minimum illumination:

Color: 0.1 lux at F1.8
B/W: 0.05 lux at F1.8

Environment

Operating Temperature (°C):

Operating: -20°C ~ 50°C

Operating Humidity (Non-condensing):

Operating: 10% ~ 85%

Installation:

Wall/Ceiling Mount

Physical Specifications

Dimensions (W x D x H mm):

153 x 116 x 153 mm

Weight (g):

1263 g

Approval and Compliance

EMI/EMS:

CE, RoHS, FCC, ONVIF, IP67, NEMA 4X

Environmental Test:

Weather proof IP67-rated housing

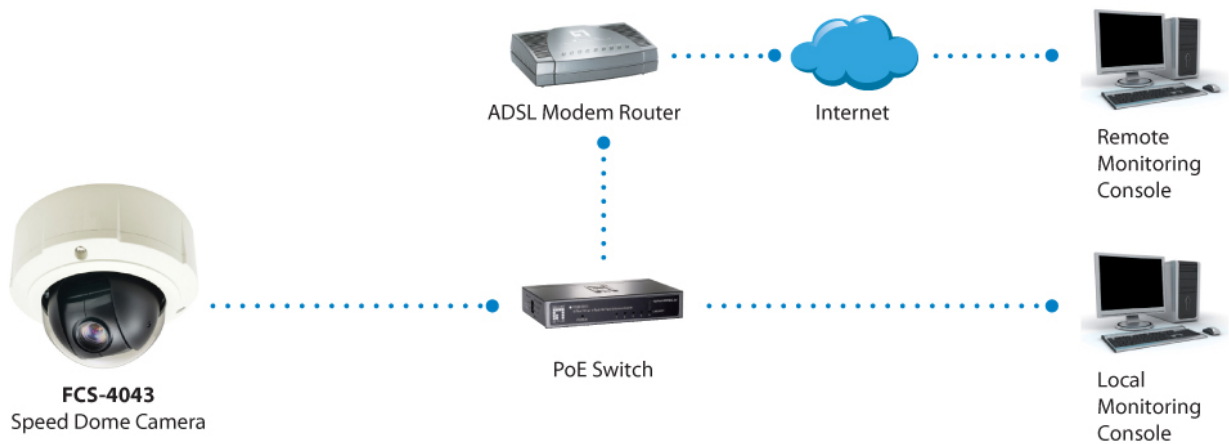
Others

Supported Browsers:

Microsoft Windows 8/7/Vista/XP



Diagram



Order Information

FCS-4044

Package Contents

FCS-4044
Screw Kit
Quick Installation Guide
Resource CD (User Manual, Utility, QIG)

Optional Accessory



CAS-2101
Pendant Cap



CAS-2102
Pendant Mount Bracket



CAS-2103
Pendant Mount Bracket



CAS-2104
Extension Tube



CAS-2314
Wall Mount Bracket



CAS-2402
Corner Mount Bracket



CAS-2503
Pole Mount Bracket, Clamping Range 5.25"-8.5"



CAS-2702
Outdoor Junction Box



CAS-3004
Flush Mount Bracket