



Access and AP Management Gateway



AMG-2001

H/W Version: 1

AMG-2001 Access and AP Management Gateway, with built-in 1,000 local accounts and 2,000 on-demand accounts, it is an ideal security solution for small-to-medium scaled network deployments, including enterprises, campuses, hotels, airport terminals, and MDUs/ MTUs. AMG-2001 integrated "secure access control", "visitor account provisioning", "flexible accounting and billing", and "centralized WLAN management" into one box to provides simplified manageability and instant mobility.

Business Networking Security

With AMG-2001, the network access of several users can be differentiated by service zone configurations. It provides Local, Site-to-Site and Remote VPN tunnels to secure information transmission for mobile workers and home-based teleworkers, as well as to increase the level of information security for enterprise network.

Characterized Access Profile for Particular Users

For places like school dormitories, apartments and hotels, AMG-2001 makes it easy to manage accounts

of network users and equally share bandwidth among them. With simple and user friendly setup, administrators can easily configure different access profiles for different users, making access policy more flexible. In addition, billing policy allows administrator to select the best suitable cost plan for each user.

Integration with Property Management System (PMS)

For hotels using Property Management System (PMS) such as Micros Fidelio/Opera, AMG-2001 integrated Internet access fees into the room bills, customers are able to purchase Internet service anytime at the front desk and/or in the room. With single account, hotel guest can access the Internet wired or wirelessly, and extend the Internet access without retype the password. AMG-2001 stands for the most cost-effective and easy-to-setup Internet Access Controller for hotels, it not only can managing and billing wired and wireless Internet services through modern IP network infrastructure, it also works for the application which combines traditional phone lines through DSLAM and DSL modems.



1. LED Indicator
2. WAN Port
3. LAN Port
4. Reset Button
5. Console Port
6. Power Socket
7. Wall Mount Hole

Key Features

- Simplified Operation and Reliable Internet Connection
- Powerful Network Security Capabilities
- Comprehensive User Management
- Centralized Access Point (AP) Management
- Flexible Accounting and Billing
- Support for Location-Based Hotspot Services and Customizable UAM Web Pages
- Property Management System (PMS) Integration for Hotel Applications

Related Products



AMG-2100
Gigabit Access and AP Management Gateway



AMG-2101
Gigabit Access and AP Management Gateway Plus

Technical Specifications

Networking

- NAT or Router mode
- Static IP, DHCP, PPPoE mode on WAN interfaces and PPTP (WAN 1 only)
- NAT:
 - (1) IP/Port destination redirection
 - (2) DMZ server mapping
 - (3) Virtual server mapping
 - (4) H.323 pass-through
- Built-in with DHCP Server and support DHCP relay
- Walled Garden
- Walled Garden Ad List to create Ad website links on user login portal page
- MAC-address and IP-address pass-through
- HTTP Proxy
- IP Plug-and-Play (IP PnP)
- Configurable static routes
- Contain built-in hardware-based VPN accelerator
- Dual uplinks, outbound load balancing and failover for more reliable Internet connection
- SIP pass-through NAT

Ethernet connection to external terminal servers

Security

- Local VPN (local termination of IPSec tunnels)
- PPTP VPN tunnels
- Site-to-site VPN tunnels
- VPN pass-through (IPSec and PPTP)
- Built-in DoS attack protection

Service Zones

- The network is divided into maximum 9 Service Zones, each defined by a pair of VLAN tag and ESSID
- Each service zone has its own (1) login portal page (2) authentication options (3) LAN interface IP address (4) DHCP address range
- Each service zone allows access to the selected groups
- Each service zone assigns a network policy to each user group

User Management

- 1,000 Local accounts and 2,000 On-demand accounts
- On-demand accounts for visitors
- Local user account roaming
- Authentication methods supported: Local and On-demand accounts, POP3, LDAP, RADIUS, Windows Domain, and SIP
- Single Sign-On for Windows Domain
- MAC address and user identity binding for local user authentication
- MAC Access Control List
- Users can be divided into user groups, each user group has its own network properties, including bandwidth, QoS, accessible service zones, and other privileges
- QoS and WMM traffic types: Voice, Video, Best Effort and Background
- Each group (role) may get different network policies in different service zones
- Max concurrent user session (TCP/UDP) limit
- A setting for user-idle-timeout
- Configurable user Black List
- Export/Import local users list to/from a text file

Accounting and Billing

- Billing plans for On-demand accounts
- On-line payment with credit card and PayPal account via external payment gateways (Authorize.Net, PayPal, and SecurePay)
- Enable session expiration control for On-demand accounts by time (hour) and data volume (MB)
- Detailed per-user network traffic history for both Local and On-demand user accounts
- RADIUS accounting
- RADIUS VSA implementation for volume-based session control using RADIUS server
- Automatic e-mail to report network traffic history

System Administration

- Web-based management user interface
- Customizable login and logout portal page
- SSH remote management
- Remote firmware upgrade
- NTP time synchronization
- Menu driven console management interface
- Utilities to backup and restore the system configuration

Monitoring and Reporting

- Status monitoring of on-line users
- IP-based monitoring of network devices
- Uplink (WAN) connection failure alert
- Syslog for diagnosis and troubleshooting
- User traffic history logging
- Traffic history report via email to administrator
- Users' session log can be sent to ftp or Syslog server

AP Management

- Number of managed APs: 12
- Centralized remote management via HTTP
- Auto discovery for managed APs
- Enable or disable APs easily via user interface
- Templates for managed APs
- Monitor managed AP for the system status, the number of associated clients, and RF information
- Upgrade managed APs centrally, including bulk upgrade
- Monitor 3rd party, non-integrated APs: 100

Hardware Specifications

- WAN Ports: 2 x 10BASE-T/100BASE-TX RJ-45
- LAN Ports: 8 x 10BASE-T/100BASE-TX RJ-45
- Console Port: 1 x RJ-11
- LED Indicators: 1 x Power, 1 x Status, 2 x WAN, 8 x LAN

Physical and Power

- Power Adapter: 100~240 VAC, 50~60 Hz
- Form Factor: Mini-desktop
- Dimensions (W x D x H): 243 mm x 150 mm x 45.5 mm
- Weight: 1.29 kg

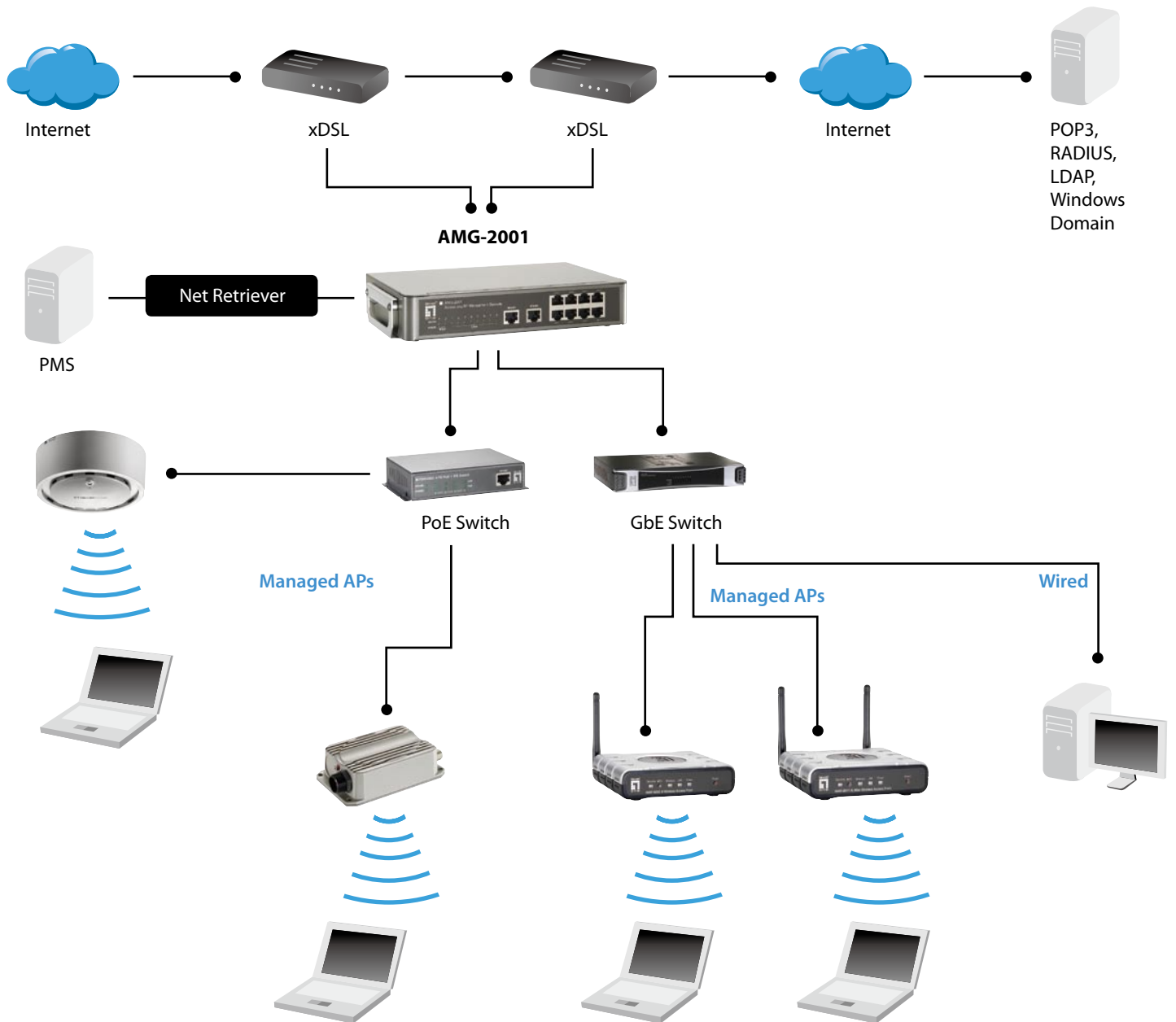
Environment

- Operating Temperature: 0 ~ 45 oC

Certifications

- CE, FCC
- RoHS compliant

Dimension Diagram



Order Information

Package Contents

AMG-2001: Access and AP Management Gateway

- AMG-2001 x 1
- CD-ROM (with User's Manual and QIG) x 1
- Quick Installation Guide (QIG) x 1
- Console Cable x 1
- Ethernet Cable x 1
- Power Adapter x 1



Managing Access Points



WAB-3003
108Mbps 11g Outdoor PoE AP



WAP-6002
150Mbps N Wireless Access Point



WAP-3101
108Mbps Ceiling Mount PoE
Wireless Access Point



WAP-6011
300Mbps N_Max Wireless Access
Point