

LevelOne

WBR-3408

*11g Wireless Broadband Router*

*(Roteador banda-larga sem fio- Wireless G)*

---

---

## ***Quick Installation Guide***

---

---

English

Português

# Table of Contents

English .....	3
Português .....	16

## Package Contents

- WBR-3408 11g Wireless Broadband Router
- Power Adapter
- Antenna x1
- RJ45 Ethernet LAN Cable
- Quick Installation Guide
- CD Manual

If any of the above items are missing, please contact your retailer or distributor.

## Before You Begin

Please note the default settings listed below.

### Default Settings

<b>IP Address</b>	<b>192.168.0.1</b>
<b>User / Password</b>	<b>admin / password</b>
<b>Wireless Mode</b>	<b>Enable</b>
<b>Wireless SSID</b>	<b>WBR-3408</b>
<b>Security</b>	<b>None</b>

This Quick Installation Guide only describes the most basic situations and settings. Please consult the User Manual on the CD for more details.

Please have your Internet Service Provider's username, password or other connection details ready.

## Installation

1. Please power off your ADSL / Cable modem by unplugging the power adapter.

2. Attach the included antenna.



3. Connect your broadband internet connection to the wireless router's WAN port.



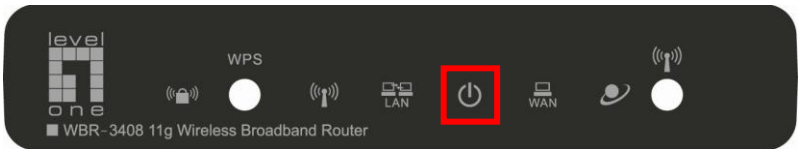
4. Connect the Computer LAN cable.



**5.** Plug in the Power Adapter.



**6.** Wait until the Power light remains on.  
This means the router is ready for use.



**7.** Power back on your ADSL / Cable modem by plugging in the power adapter.

**8.** Installation is now complete. You can now begin to configure the device.

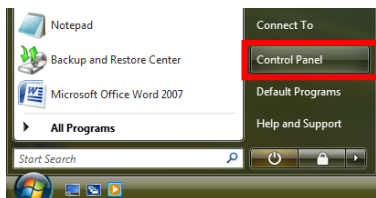
# Check Your Network Settings

## (Windows XP / Vista)

1. Click the **Start Button** and open **Control Panel**.



Windows XP

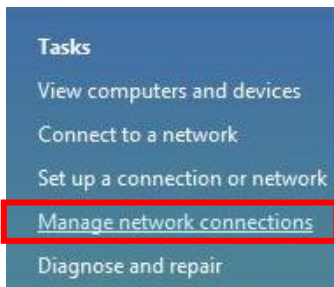


Windows Vista

2. Windows XP, double click **Network Connections**



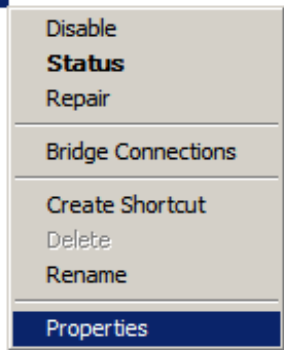
- Windows Vista, click **View Network Status and Tasks** then **Manage Network Connections**



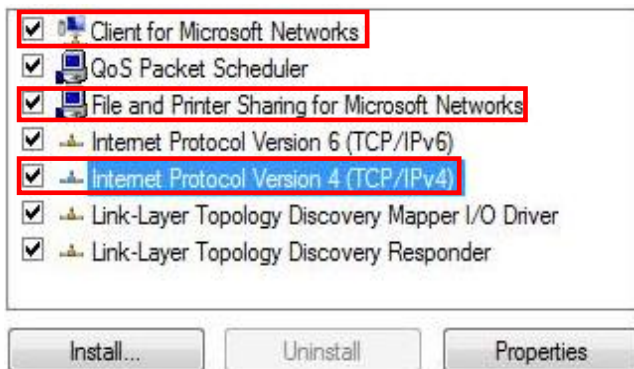
3. Right click on **Local Area Connection** and choose **Properties**.



**Note:** The name could be different due to different Network Interfaces.

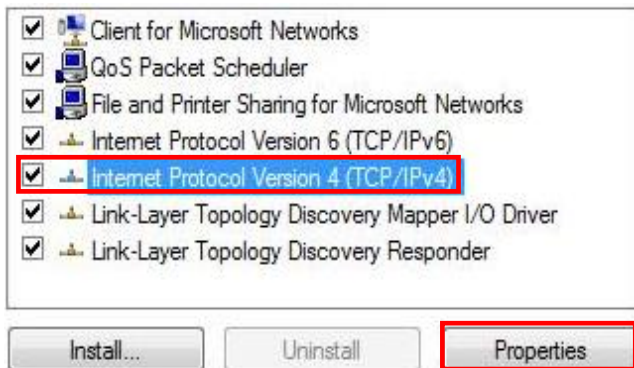


4. Check the **Client for Microsoft Networks**, **File and Printer Sharing**, and **Internet Protocol (TCP/IP)** is ticked. If not, please tick them.

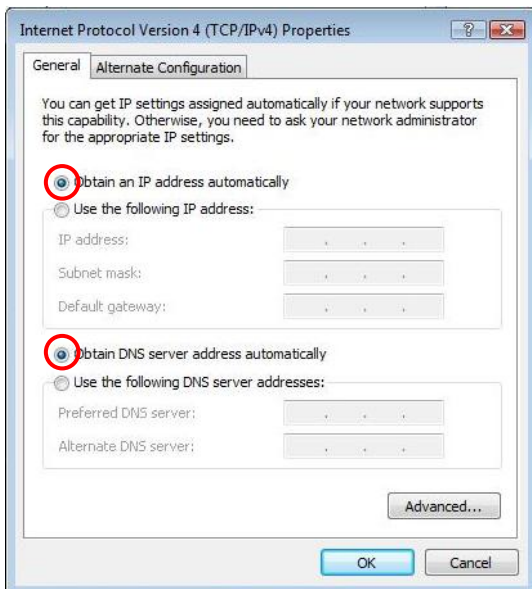




5. Select **Internet Protocol (TCP/IP)** and click [**Properties**]



6. Select these two options and click [**OK**].

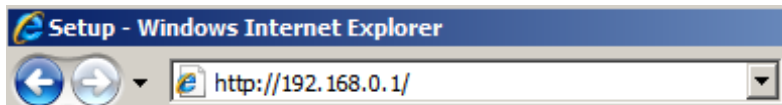


## Configuration

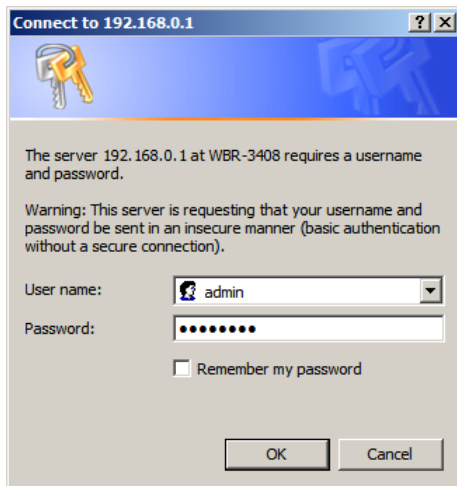
1. Shutdown and restart your computer.
2. Once restart is completed, start your WEB browser (Internet Explorer recommended).

In the *Address* box, enter the following:

**http://192.168.0.1**



3. Enter the Username and Password when prompted.

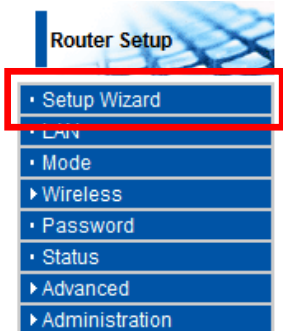


### Defaults

**Username:** admin

**Password:** password

4. You can select the language you want on the left drop down menu.
5. To set up the router, please click on the **Setup Wizard** on the left menu.



6. Please have your Internet Service Provider's Username, Password and other connection details ready.

Then follow the steps of the wizard to complete the setup.

A screenshot of a web browser window showing the "Setup Wizard - Internet Access" page. The page has a blue header bar with the title "Setup Wizard - Internet Access". Below the header, there is a white area with the text "Check the data provided by your ISP." and a small blue logo on the right. The main content area is titled "Connection Method" and contains the following text: "If your ISP requires a User Name and Password for Internet Access, select 'Login'. Otherwise, select 'No Login'." There are three radio button options: "Login:" with a dropdown menu showing "PPPoE", "No Login:" with a dropdown menu showing "Dynamic IP address", and "NAT disable" with an unchecked checkbox. At the bottom of the page, there are three buttons: "< Back", "Next >", and "Cancel".

7. To set wireless settings, please click **Wireless** and then **Options**.

## Router Setup

- Setup Wizard

- LAN

- Mode

- ▼ Wireless

- Options

- Schedule

- MAC Filter

- WPS

- WDS

- Password

- Status

- ▶ Advanced

- ▶ Administration

8. You can set your Wireless network name (SSID) and security encryption.

## Wireless

### ▼ Options

#### Region

Region:

#### Multi SSID

SSID :

SSID1 (Service Set Identifier)

Broadcast SSID

Isolation Within SSID

Security Setting: SSID1 : Disabled

#### Options

802.11 Mode:

Channel NO.

Extension Channel.

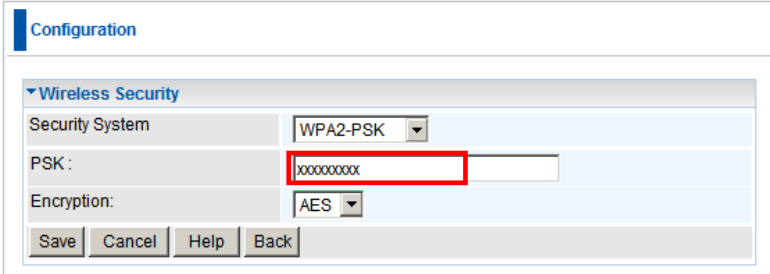
Isolation Between SSID

WMM support

Bandwidth:

- 9.** LevelOne recommends WPA2-PSK AES for maximum wireless security. Please ensure that the same network security settings are used on both the router and wireless client.

Please type your passkey in the PSK field.



The screenshot shows a configuration page with a blue header labeled "Configuration". Below the header is a section titled "Wireless Security" with a dropdown arrow. The settings are as follows:

Security System	WPA2-PSK
PSK :	XXXXXXXXXX
Encryption:	AES

At the bottom of the configuration area are four buttons: Save, Cancel, Help, and Back. The PSK field is highlighted with a red rectangular border.

## **Troubleshooting**

### ***1. I cannot connect to the wireless router to start configuration.***

Check that you have connected the cable correctly between the router's LAN port and your computer. Also check if your computer is set to obtain an IP Address via DHCP (see above).

### ***2. I cannot connect to the Internet.***

Try to turn off the router and your ADSL/Cable modem. Wait 30 seconds and then turn the devices back on. If you still have problems, then access the router's configuration page and check whether the router has obtained an Internet IP Address in the **Status** page.

If the above does not work, please contact your Internet Service Provider to check whether there are any problems with the connection or settings.

### **3. *I cannot connect to the wireless network.***

Check whether the SSID network name and wireless security are the same on both the client and router. If you still have problems, then power off and on your router and restart your computer.

Your last solution will be forced to reset the router to factory default settings.

Make sure your router's Power light is not blinking and remains ON. Then press and hold the WPS and WLAN buttons for more than 10 seconds until you see the Power light blink 2 times, then release the buttons. The router is now reset to factory defaults.

## **Pacote contém**

- Roteador WBR-3408 Roteador banda-larga sem fio - Wireless G
- Fonte de alimentação
- 1 x Antena
- Cabo de rede LAN Ethernet RJ45
- Guia de instalação rápida
- CD com manual

Se quaisquer dos itens acima listados estiverem faltantes, por favor, entre em contato com seu revendedor ou distribuidor.



## Antes de você começar

Por favor, considere os ajustes de fábrica listados abaixo.

### Ajustes de fábrica

<b>Endereço IP</b>	<b>192.168.0.1</b>
<b>Usuário / Senha</b>	<b>admin / password</b>
<b>Modo Wireless</b>	<b>Permitir</b>
<b>Wireless SSID</b>	<b>WBR-3408</b>
<b>Seguranca</b>	<b>Nenhum</b>

Este guia de instalação rápida apenas descreve as situações mais básicas e ajustes. Por favor, consulte o Manual do usuário no CD para mais detalhes.

Por favor, tenha o nome de usuário de seu provedor de serviço de internet, senha ou detalhes de outra conexão em mãos.

## Instalação

**1.** Por favor, desligue seu ADSL / Cable modem desconectando a fonte de alimentação.

**2.** Conecte a antena.



**3.** Conecte sua conexão à internet banda-larga na porta WAN do roteador.



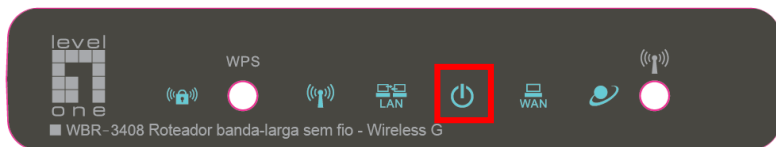
**4.** Conecte o cabo de rede do computador.



**5.** Ligue a fonte de alimentação.



**6.** Espere até que a luz de Power light permaneça on. Isto significa que o roteador está pronto para uso.



**7.** Ligue a fonte de alimentação no seu ADSL / Cable.

**8.** A instalação agora está completa. Você pode iniciar a configuração do equipamento.

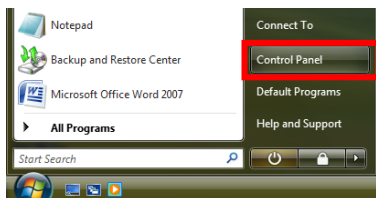
## Verifique seus ajustes de rede

### (Windows XP / Vista)

1. Clique o botão de **Iniciar** e abra o **Painel de Controle**.



Windows XP

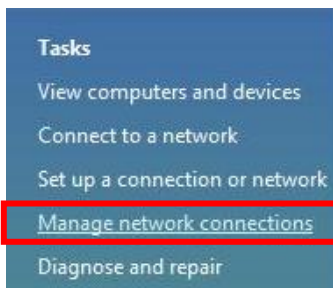


Windows Vista

2. Windows XP, duplo clique em **Conexões de rede**.



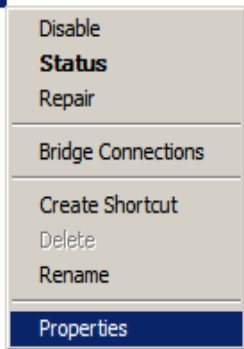
Windows Vista, clique, **Visualize status da rede e Tarefas** e então **Gerencie conexões de rede**.



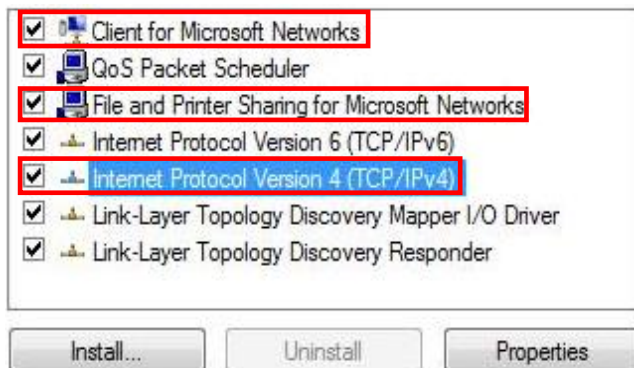
3. Clique direito **Conexões de rede local** e escolha **Propriedades**.



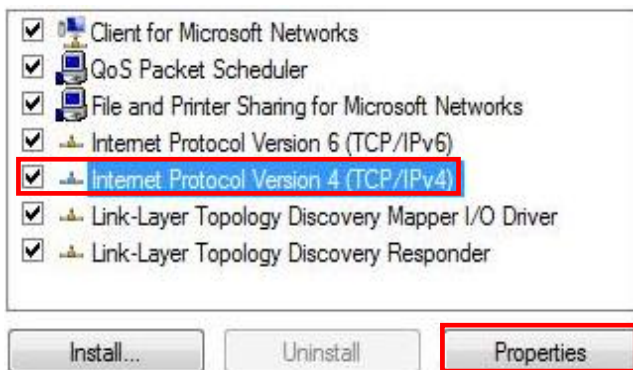
**Nota:** O nome deve ser diferente devido a diferentes interfaces de rede.



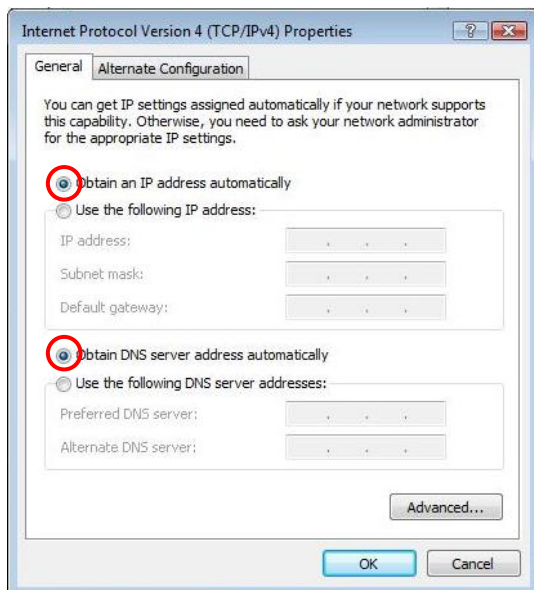
4. Verifique o **Cliente para Redes Microsoft**, **Arquivo e Compartilhamento de impressoras** e **Protocolo de Internet (TCP/IP)** estão marcados, caso não, por favor, marque.



5. Selecione **Protocolo de Internet (TCP/IP)** e clique [**Propriedade**]



6. Selecione estas duas opções e clique [**OK**].

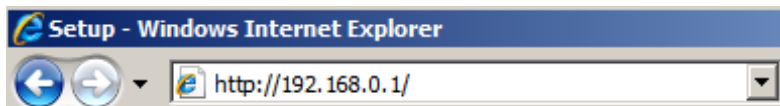


## Configuração

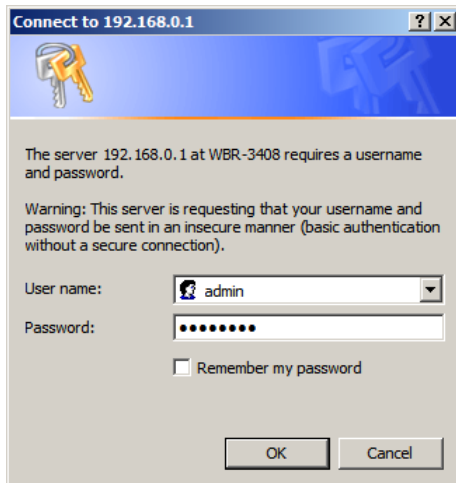
1. Desligue e reinicie seu computador.
2. Uma vez reiniciado, inicie seu navegador WEB (recomendamos Internet Explorer).

Na caixa de endereço, entre com:

**http://192.168.0.1**



3. Entre nome do usuário e senha.



### Pré-estabelecido

**Nome do usuário:**

admin

**Senha:**

password

4. Você pode selecionar a linguagem desejada no lado esquerdo do menu.
5. Para iniciar o roteador, por favor, clique no **Setup Wizard** no lado esquerdo do menu.



6. Por favor, tenha em mãos o nome de usuário do seu provedor de serviços de internet, senha e outros detalhes de conexões. Então siga os passos do wizard para completar o setup.

A screenshot of a web browser window titled 'Setup Wizard - Internet Access'. The page has a blue header bar with the title. Below the header, there is a text prompt: 'Check the data provided by your ISP.' followed by a small blue logo consisting of a grid of squares. The main content area is titled 'Connection Method' and contains the following text: 'If your ISP requires a User Name and Password for Internet Access, select "Login". Otherwise, select "No Login".' There are three radio button options: 'Login:' with a dropdown menu showing 'PPPoE'; 'No Login:' with a dropdown menu showing 'Dynamic IP address'; and 'NAT disable' with an unchecked checkbox. At the bottom of the form, there are three buttons: '< Back', 'Next >', and 'Cancel'.



7. Para configurar os ajustes wireless, por favor, clique **Wireless** e então **Opções**.

## Router Setup

• Setup Wizard

• LAN

• Mode

▼ Wireless

• Options

• Schedule

• MAC Filter

• WPS

• WDS

• Password

• Status

▶ Advanced

▶ Administration

8. Você pode ajustar seu nome de rede wireless (SSID) e encriptação de segurança.

### Wireless

#### ▼ Options

##### Region

Region:

##### Multi SSID

SSID :

SSID1 (Service Set Identifier)

Broadcast SSID

Isolation Within SSID

**Security Setting:** SSID1 :Disabled

##### Options

802.11 Mode:

Channel NO.

Extension Channel.

Isolation Between SSID

WMM support

Bandwidth:

- 9.** LevelOne recomenda para o máximo de segurança WPA2-PSK AES. Por favor, permita que os ajustes da mesma segurança de rede sejam usados tanto no roteador quanto no cliente wireless.

Por favor, digite a chave no campo PSK.

Configuration

Wireless Security

Security System: WPA2-PSK

PSK: xxxxxxxx

Encryption: AES

Save Cancel Help Back

## Solução de problemas

### **1. *Eu não consigo conectar o roteador wireless para iniciar a configuração.***

Verifique se você conectou o cabo corretamente entre a porta LAN do roteador e seu computador. Verifique também se o computador está ajustado para obter um endereço IP via DHCP (veja acima).

### **2. *Eu não consigo conectar à internet.***

Tente desligar seu roteador e o ADSL/Cable modem. Espere 30 segundos e ligue novamente os equipamentos. Se os problemas persistirem, então acesse a página de configuração do roteador e verifique se o roteador obteve um endereço de internet IP na página de **Status**.

Se o descrito acima não funcionar, por favor, contate seu provedor de acesso a internet para verificar se existem problemas com a conexão e ajustes.

### **3. *Eu não consigo conectar na rede wireless.***

Verifique se o SSID da rede e segurança wireless são os mesmos no cliente e roteador. Se os problemas persistirem, então, desligue e ligue seu roteador e reinicie o computador. .

Esta última ação irá forçar o reset no roteador voltando aos ajustes de fábrica.

Esteja certo que a luz de POWER do roteador não esteja piscando e permaneça no ON. Então, pressione e mantenha os botões WPS e WLAN por mais de 10 segundos até que você veja a luz de POWER piscar por duas vezes, então libere os botões. O roteador agora está nos ajustes de fábrica.