



# IES-0881

4 x 802.3af + 4 FE + 2 GE Combo Managed Switch -40 to 75C, Desktop

## Quick Installation Guide

### Default Setting

IP	192.168.10.1
Login	root
Password	[blank]
Console	115200, n, 8, 1

v1.00 - 1206

## Overview

LevelOne IES-0881 Industry Ethernet Switch provides 4 PoE ports of 10/100Base-TX plus 4 ports of 10/100Base-TX Ethernet plus 2 ports of Gigabit Combo SFP to enable high speed network at mission-critical environment. The compact metal housing is designed for desktop space saving, plus the clearly visible status LEDs provide simple monitoring of port link activity. Moreover, the SFP slots support pluggable modules that enabling you to choose from a variety of transceivers.

### Resilient Ring Network

Supports Ring topology network providing simple installation and ultra fast network recovery performance, less than 15ms. Unlike much complex resilient topology, such as a redundant star, the Ring simplifies the network design and requires less cabling installation. In addition, fast network recovery time helps minimize system downtime.

### Management

Supports a variety of management features including: CLI via Console or Telnet; Graphic User Interface via Web Browser or Simple Network Management Protocol via SNMP tools. It provides better visibility and management of those critical assets.

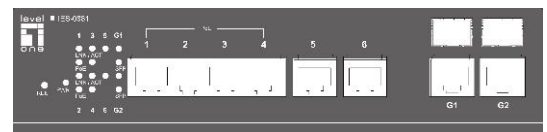
### Power over Ethernet

This switch is Power Sourcing Equipment (PSE), and it is fully complied with IEEE 802.3af PoE standard at maximum 15.4W power budget per port. It helps to save infrastructure wiring costs dramatically by eliminating electric wiring and less UPS needed.

## Features

- Meets NEMA TS1/TS2 Environmental requirements such as temperature, shock, and vibration for traffic control equipment.
- Meets EN61000-6-2 & EN61000-6-4 EMC Generic Standard Immunity for industrial environment.
- RS-232 console, Telnet, SNMP v1 & v2c & v3, RMON, Web Browser, and TFTP management.
- Supports Command Line Interface in RS-232 console.
- Supports 8192 MAC addresses. Provides 2M bits memory buffer.
- Supports IEEE802.3af Power over Ethernet (PoE) and IEEE802.3at PoE+ Power Sourcing Equipment (PSE).
- Supports IEEE802.3/802.3u/802.3ab/802.3z/802.3x. Auto-negotiation: 1000Mbps-full-duplex; 10/100Mbps-full/half-duplex; Auto MDI/MDIX.
- Provides up to two combo Gigabit ports. SFP socket for Gigabit fiber optic expansion.
- Supports digital diagnostics monitoring (DDM)/digital optical monitoring (DOM) functions according to the industry-standard SFF-8472.
- Store-and-forward mechanism. Full wire-speed forwarding rate.
- Power Supply: 47~57VDC Terminal Block power input.
- Operating voltage and Max. current consumption: 0.37A @ 48VDC, 0.32A @ 55VDC. Power consumption: 17.7W Max.
- -40°C to 75°C (-40°F to 167°F) operating temperature range.
- Tested for functional operation @ -40°C to 85°C (-40°F to 185°F).
- Hardened metal case

## LED Status



LED	Status	Description
PWR	Steady	Power On
	Off	Power Off
<b>10/100Base-TX</b>		
LNK/ACT	Steady	Network connection established
	Flashing	Transmitting or Receiving data
PoE	Steady	Power Device (PD) is connected
	Off	Power Device (PD) is disconnected
<b>10/100/1000Base-TX &amp; 1000Base-FX &amp; SFP</b>		
LNK/ACT	Steady	Network connection established
	Flashing	Transmitting or Receiving data
SFP	Steady	A valid connection established
	Off	No connection is being established

## Package Contents

- IES-0881
- Quick Installation Guide
- CD User Manual

# Power Input



Terminal Block	Power	+	47 – 57VDC
		-	Power Ground
		<b>Earth Ground</b>	

# Console Configuration

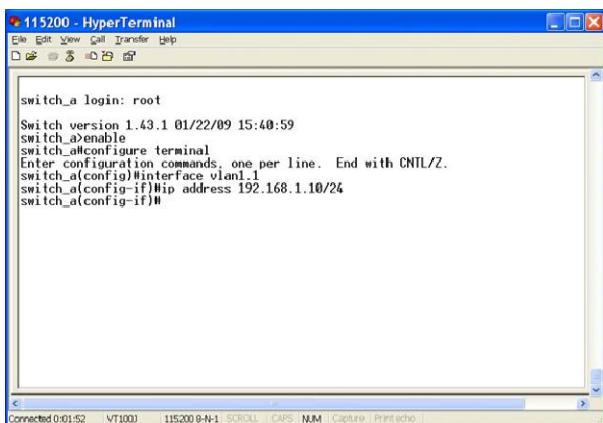
1. Connect to the switch console:
2. Connect the DB9 straight cable to the RS-232 serial port of the device and the RS-232 serial port of the terminal or computer running the terminal emulation application. Direct access to the administration console is achieved by directly connecting a terminal or a PC equipped with a terminal-emulation program (such as HyperTerminal) to the switch console port.
3. Configuration settings of the terminal-emulation program:
4. Baud rate: 115,200bps, Data bits: 8, Parity: none, Stop bit: 1, Flow control: none.
5. Press the "Enter" key. The Command Line Interface (CLI) screen should appear as below:
6. Logon to Exec Mode (View Mode):
7. At the "switch\_a login:" prompt just type in "root" and press <Enter> to logon to Exec Mode (or View Mode). And the "switch\_a>" prompt will show on the screen.



8. Logon to Privileged Exec Mode (Enable Mode):
9. At the "switch\_a>" prompt just type in "enable" and press <Enter> to logon to Privileged Exec Mode (or Enable Mode). And the "switch\_a#" prompt will show on the screen.
10. Logon to Configure Mode (Configure Terminal Mode):
11. At the "switch\_a#" prompt just type in "configure terminal" and press <Enter> to logon to Configure Mode (or Configure

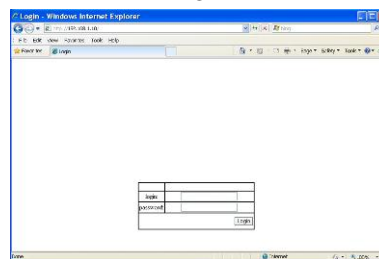
Terminal Mode). And the "switch\_a(config)#" prompt will show on the screen.

12. Set new IP address and subnet mask for Switch:
13. At the "switch\_a(config)#" prompt just type in "interface vlan1.1" and press <Enter> to logon to vlan 1 (vlan 1.1 means vlan 1). And the "switch\_a(config-if)#" prompt will show on the screen.
14. Command Syntax: "ip address A.B.C.D/M". "A.B.C.D" specifies IP address. "M" specifies IP subnet mask. "M"= 8: 255.0.0.0, 16:255.255.0.0, or 24: 255.255.255.0.
15. For example, At the "switch\_a(config-if)#" prompt just type in "ip address 192.168.1.10/24" and press <Enter> to set new IP address (192.168.1.10) and new IP subnet mask (255.255.255.0) for Switch

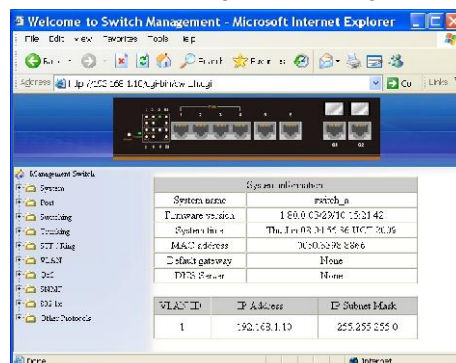


# Web Configuration

1. Login the switch:
2. Specify the default IP address (192.168.1.10) of the switch in the web browser. A login window will be shown as below:



3. Enter the factory default login ID: root.
4. Enter the factory default password (no password).
5. Then click on the "Login" button to log on to the switch.



**Note:** Please refer to User Manual for more detailed information