



LevelOne

FNS-1020

1-Bay Simple Network Storage

Quick Installation Guide

English	Português
Deutsch	Svenska
Français	Slovenščina
Español	繁體中文
Nederlands	简体中文
Dansk	한국어
Italiano	Русский
Ελληνικά	

Table of Contents

English	3
Deutsch	11
Français	19
Español	27
Nederlands	35
Dansk	43
Italiano	51
Ελληνικά	59
Português	67
Svenska	75
Slovenščina	83
繁體中文	91
简体中文	99
한국어	107
Русский	115

Default Settings

IP Address	192.168.0.254
Password	admin

This guide covers only the most common situations. All detail information is described in the user manual.

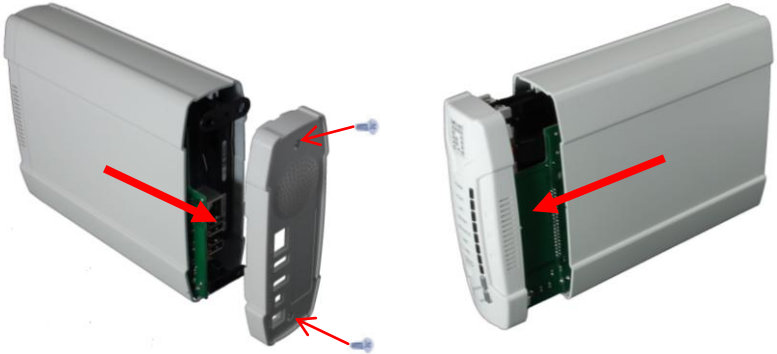
Package Contents

- FNS-1020 1-Bay Simple Network Storage
- Power Adapter (12VDC, 4A)
- RJ-45 LAN Ethernet Cable
- Desktop Stand and Rubber Feet
- Installation Screws
- CD-ROM with Manual / Configuration Utility
- Quick Installation Guide

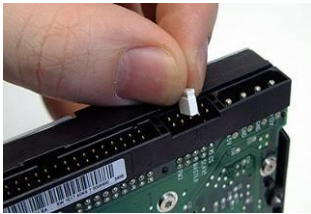
If any of the above items are missing, please contact your retailer or distributor.

Installation

1. Unfasten the two screws from the rear and remove the back panel.
2. Pull out front panel and inner tray.



3. Make sure the jumper on your hard drive is set to **Master**
4. Install your 3.5-inch IDE or SATA hard drive and connect the data and power cables.



* Consult the instructions on your hard drive as it differs from each manufacturer.

Then use the screws provided to fasten the hard drive.



5. Put on the front panel.
The arrow on the casing indicates **bottom front**.



6. Reassemble the back cover and fasten the two screws.

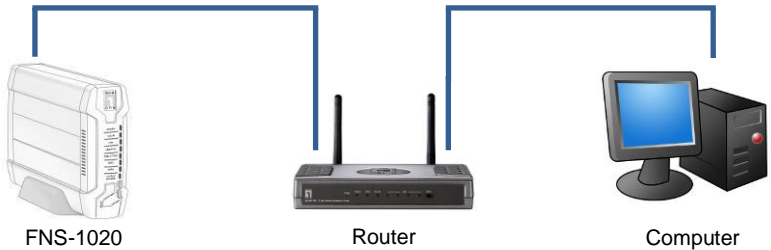


Connecting the Cables

1. Now connect the power adapter and network cable.



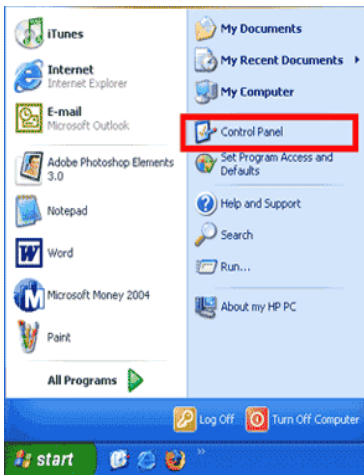
2. Connect the FNS-1020 to an Internet ready router.



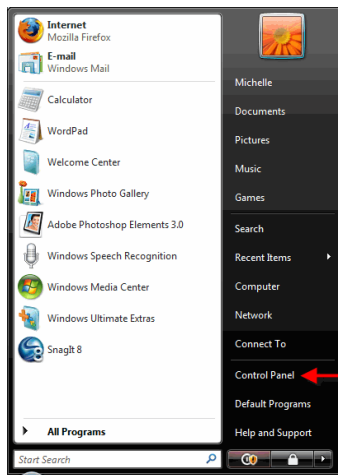
3. Installation is now complete. You can now power on the device and begin to configure the settings.

Check Network Settings (Windows XP / Vista)

1. Click Start button and open Control Panel.



Windows XP

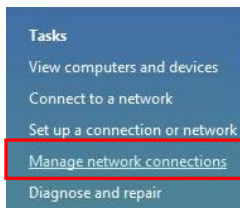


Windows Vista

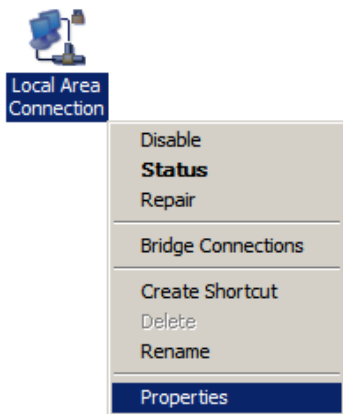
2. Windows XP, click [Network Connection]



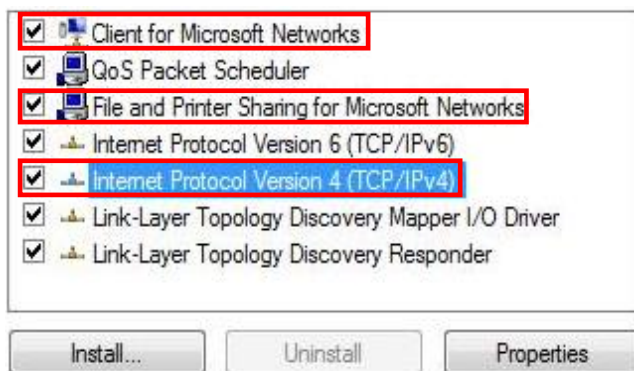
- Windows Vista, click [View Network Status and Tasks] then [Manage Network Connections]



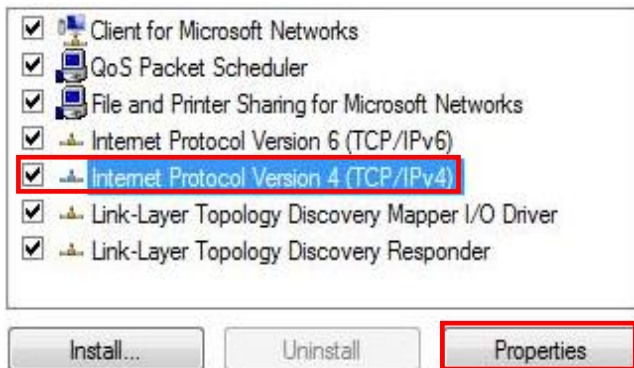
3. Right click on [**Local Area Connection**] and choose [**Properties**].



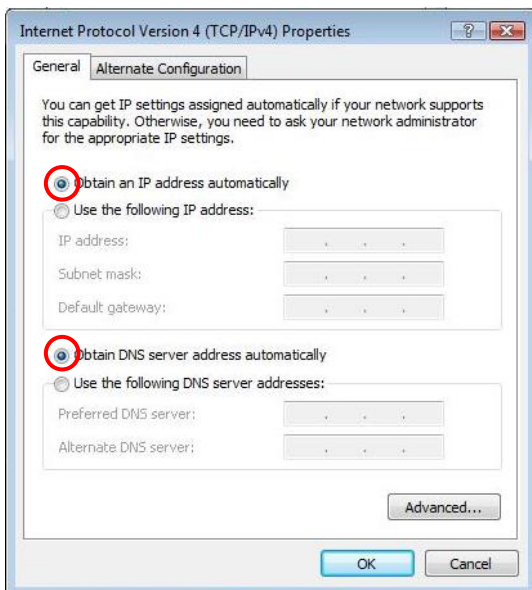
4. Check the “**Client for Microsoft Networks**”, “**File and Printer Sharing**”, and “**Internet Protocol (TCP/IP)**” is ticked. If not, please install them.



5. Select “**Internet Protocol (TCP/IP)**” and click [**Properties**]

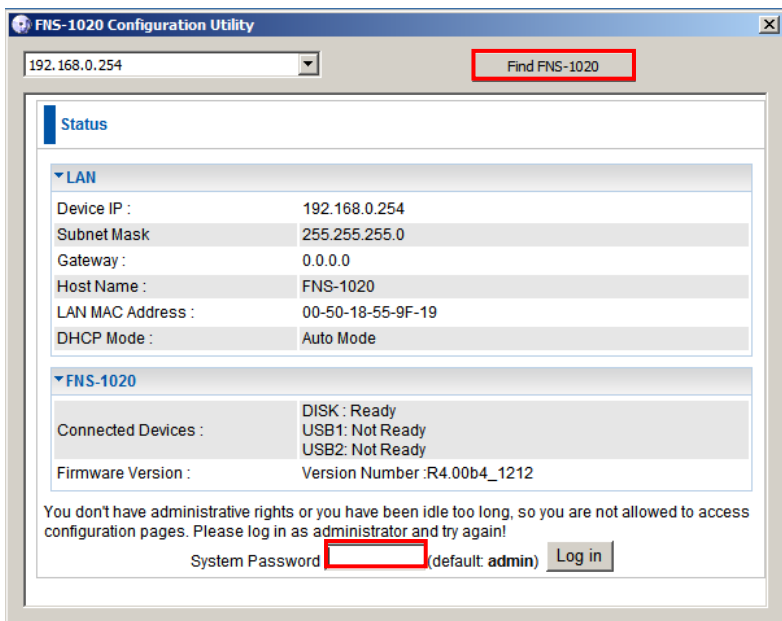


6. Select these two options and click [**OK**].



Configuration

1. Insert the included CD and install the **Utility**.
2. Use the Utility to find your FNS-1020.
3. Please enter password (**admin**).
4. Click **Wizard** to set up the network settings and hard drive configuration.



For more detailed configuration, please consult the User Manual on the included CD.

Packungsinhalt

- FNS-1020 Netzwerkspeicher mit einem Einschub
- Netzadapter 12 V DC, 4 A
- RJ-45-LAN-Ethernet-Kabel
- Tischfuß und GummifüÙe
- Montageschrauben
- CD-ROM mit Handbuch / Konfigurationsprogramm
- Kurzinstallationsanleitung

Falls Sie die oben genannten Teile nicht vollständig erhalten haben, wenden Sie sich an Ihren Fachhändler.

Installation

1. Lösen Sie die beiden Schrauben in der Rückwand und entfernen Sie die Rückwand.



2. Ziehen Sie die Frontplatte mitsamt Innenteil heraus.



3. Der Jumper am Festplattenlaufwerk muss auf **Master** gesetzt werden.



* Gebrauchsanweisung für das Festplattenlaufwerk beachten; die Vorgehensweise ist je nach Hersteller unterschiedlich.

4. Installieren Sie Ihr 3,5-Zoll IDE oder SATA-Festplattenlaufwerk und schließen Sie Daten- und Stromkabel an.

Danach das Festplattenlaufwerk mit den zugehörigen Schrauben befestigen.



5. Setzen Sie die Frontplatte ein.
Der Pfeil auf dem Gehäuse kennzeichnet die **Unterseite der Frontplatte**.



6. Setzen Sie die Rückwand ein und schrauben Sie sie fest (2 Schrauben).

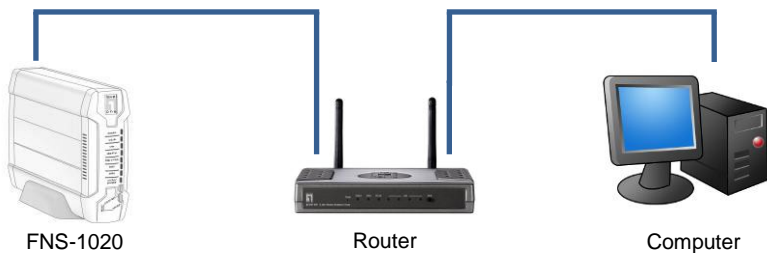


Anschluss der Kabel

1. Schließen Sie das Kabel zum Netzadapter und das Netzwerkabel an.



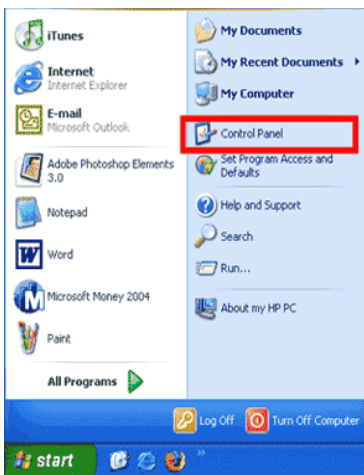
2. Schließen Sie das FNS-1020 an einem Internetfähigen Router an.



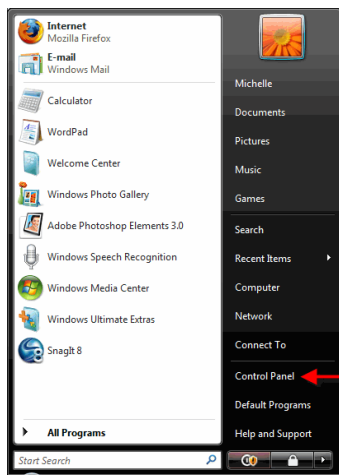
3. Die Installation ist jetzt abgeschlossen, und Sie können das Gerät einschalten und mit der Konfiguration beginnen.

Netzwerkeinstellungen überprüfen (Windows XP / Vista)

1. Klicken Sie auf die Start-Taste und öffnen Sie die Systemsteuerung.



Windows XP



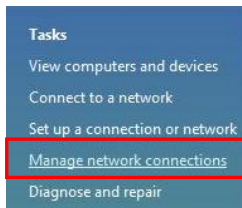
Windows Vista

2. Windows XP: klicken Sie auf **[Network Connection]** (**Netzwerkverbindung**)

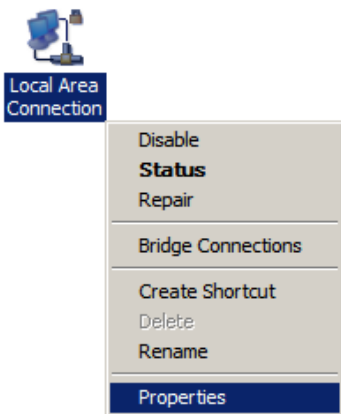


Windows Vista: klicken Sie auf **[View Network Status and Tasks]** (**Netzwerkstatus und Aufgaben anzeigen**)

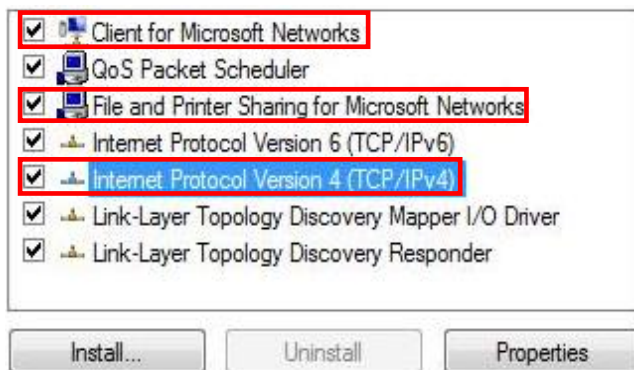
und dann **[Manage Network Connections]** (**Netzwerkverbindungen verwalten**)



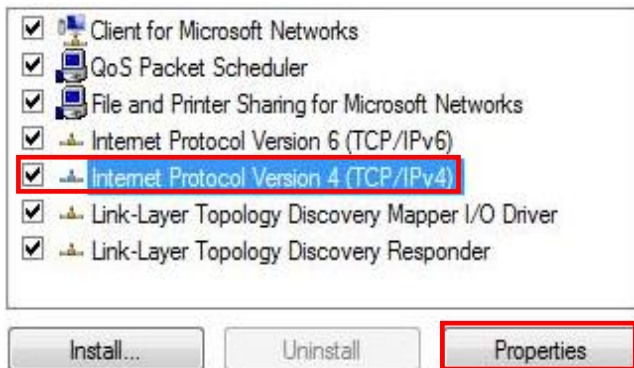
3. Klicken Sie mit der rechten Maustaste auf **[Local Area Connection]** (**LAN-Verbindung**) und wählen Sie **[Properties]** (**Eigenschaften**).



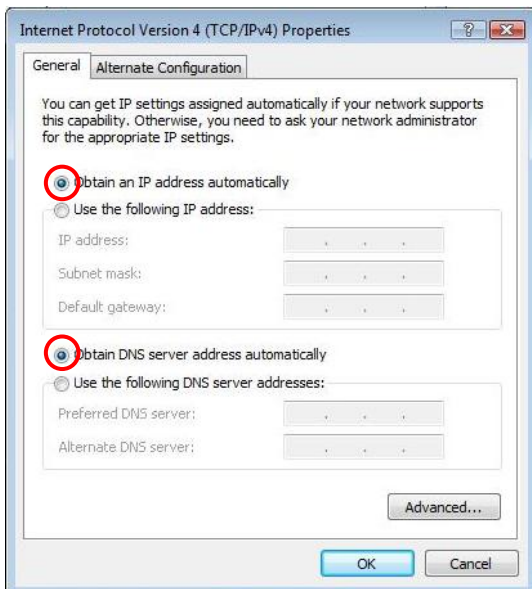
4. „Client for Microsoft Networks“ (Client für Microsoft-Netzwerke), „File and Printer Sharing“ (Gemeinsamer Zugriff auf Dateien und Drucker) und „Internet Protocol (TCP/IP)“ (Internetprotokoll (TCP/IP)) müssen markiert sein. Andernfalls bitte installieren.



5. Wählen Sie „**Internet Protocol (TCP/IP)**“ (**Internetprotokoll (TCP/IP)**) und klicken Sie auf [**Properties**] (**Eigenschaften**).



6. Wählen Sie diese beiden Optionen und klicken Sie auf [**OK**].



Konfiguration

1. Legen Sie die mitgelieferte CD ein und installieren Sie die **Utility (Dienstprogramm)**.
2. Suchen Sie mit Hilfe der Utility Ihr FNS-1020.
3. Geben Sie das Kennwort (**admin**) ein.
4. Klicken Sie auf **Wizard (Assistent)**, um die Netzwerkeinstellungen und das Festplattenlaufwerk einzurichten.

FNS-1020 Configuration Utility

192.168.0.254 Find FNS-1020

Status

LAN

Device IP :	192.168.0.254
Subnet Mask	255.255.255.0
Gateway :	0.0.0.0
Host Name :	FNS-1020
LAN MAC Address :	00-50-18-55-9F-19
DHCP Mode :	Auto Mode

FNS-1020

Connected Devices :	DISK : Ready USB1: Not Ready USB2: Not Ready
Firmware Version :	Version Number :R4.00b4_1212

You don't have administrative rights or you have been idle too long, so you are not allowed to access configuration pages. Please log in as administrator and try again!

System Password (default: admin) Log in

Ausführliche Informationen zur Konfiguration enthält das Benutzerhandbuch auf der zugehörigen CD.

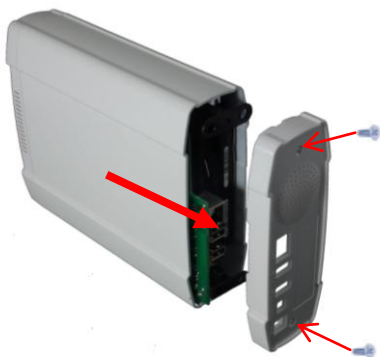
Contenu de l'emballage

- Stockage réseau simple 1 baie FNS-1020
- Alimentation (12 VCC, 4 A)
- Câble réseau Ethernet RJ45
- Support de bureau et pied caoutchouté
- Vis d'installation
- CD-Rom avec manuel / utilitaire de configuration
- Guide d'installation rapide

Si l'un des éléments ci-dessus venait à manquer, veuillez contacter votre détaillant ou distributeur.

Installation

1. Dévissez les deux vis à l'arrière et enlevez le panneau arrière.



2. Retirez le panneau frontal et le plateau intérieur.



3. Vérifiez que le cavalier sur votre disque dur est sur la position **Maître**



* Consultez les instructions sur votre disque dur car cela diffère selon les fabricants.

4. Installez votre disque dur IDE ou SATA 3,5" et connectez les câbles d'alimentation et de données.

Puis utilisez les vis fournies pour fixer le disque dur.



5. Installez le panneau frontal.
La flèche sur le boîtier indique le **bas de la face avant**.



6. Remettez en place le couvercle arrière et serrez les deux vis.

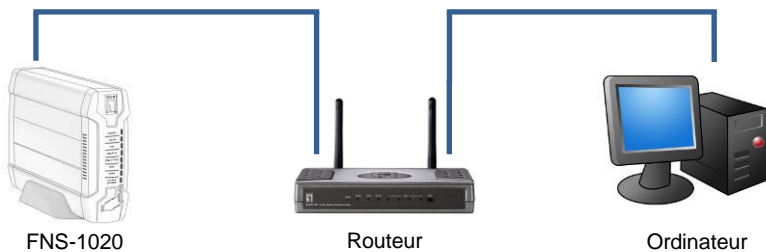


Connexion des câbles

1. Connectez à présent l'alimentation et le câble réseau.



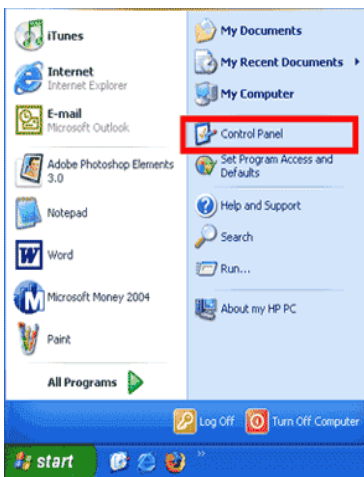
2. Connectez le FNS-1020 à un routeur avec Internet.



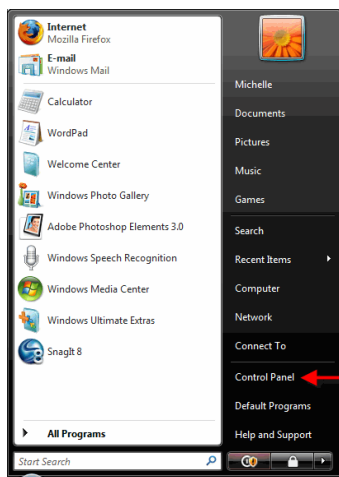
3. L'installation est maintenant terminée. Vous pouvez maintenant mettre votre appareil sous tension pour effectuer la configuration.

Vérifier les réglages réseau (Windows XP / Vista)

1. Cliquez sur Démarrer et ouvrez le panneau de configuration.



Windows XP

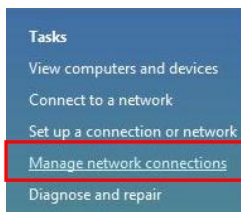


Windows Vista

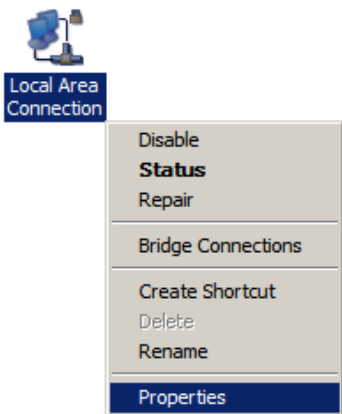
2. Sous Windows XP, cliquez sur **[Network Connection]** (**Connexions Réseau**)



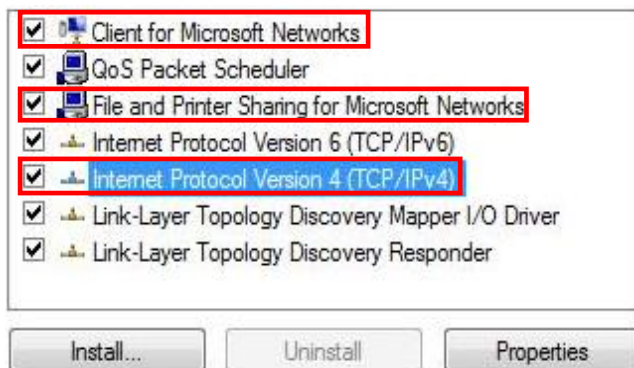
Sous Windows Vista, cliquez sur **[View Network Status and Tasks]** (**Afficher l'état et la gestion du réseau**) puis **[Manage Network Connections]** (**Gérer les connexions réseau**)



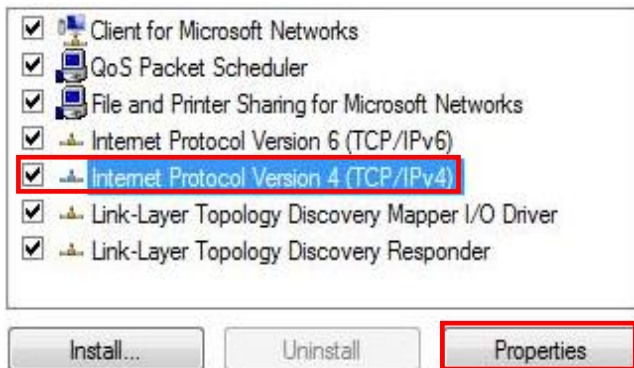
3. Faites un clic droit sur [Local Area Connection] (Connexion réseau local) et choisissez [Propriétés] (Propriétés).



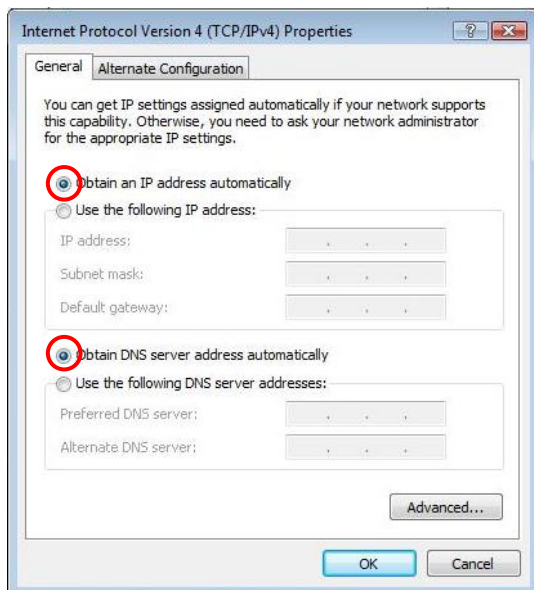
4. Vérifier que “Client for Microsoft Networks” (Client pour les réseaux Microsoft), “File and Printer Sharing” (Partage de fichiers et d’imprimantes) et “Internet Protocol (TCP/IP)” (Protocole Internet (TCP/IP)) sont cochés. Si ce n’est pas le cas, installez-les.



5. Sélectionnez “**Internet Protocol (TCP/IP)**” (Protocole Internet (TCP/IP)) et cliquez sur [Properties] (Propriétés)

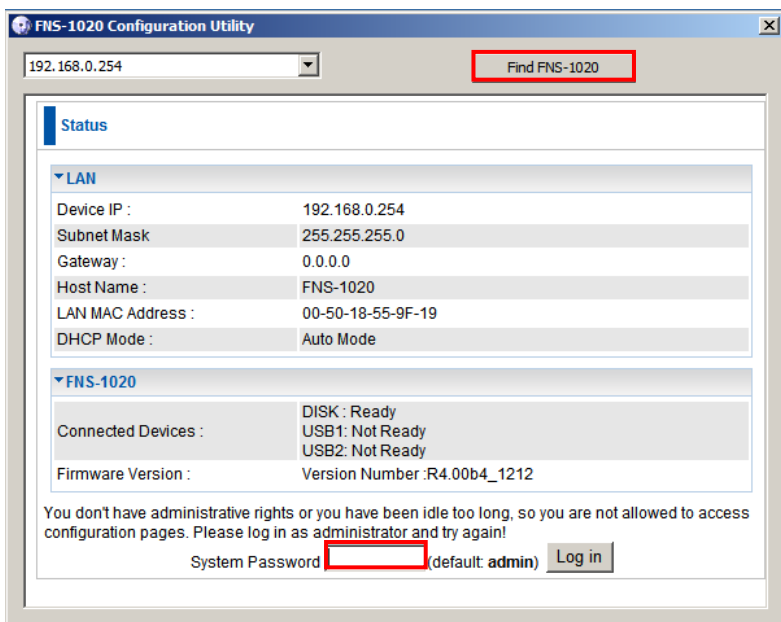


6. Sélectionnez ces deux options et cliquez sur [OK].



Configuration

1. Insérez le CD fourni et installez l'**Utility (utilitaire)**.
2. Utilisez l'utilitaire pour trouver votre FNS-1020.
3. Entrez le mot de passe (**admin**).
4. Cliquez sur **Wizard (Assistant)** pour effectuer les réglages réseau et la configuration du disque dur.



Pour des informations plus détaillées sur la configuration, veuillez consulter le manuel de l'utilisateur sur le CD fourni.

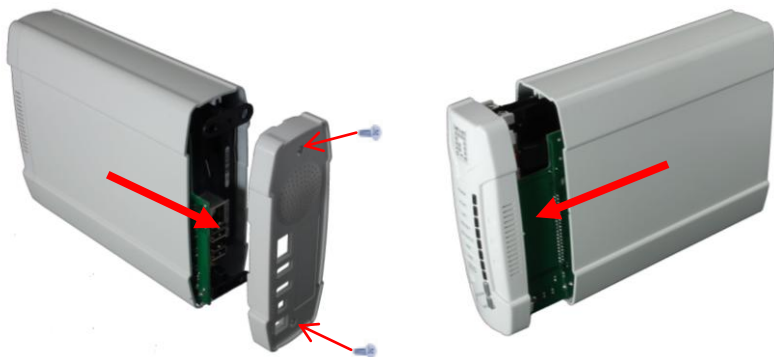
Contenido del paquete

- Dispositivo de almacenamiento en red sencillo de 1 bahía FNS-1020
- Adaptador de alimentación (12 VDC, 4 A)
- Cable Ethernet LAN RJ-45
- Soporte de sobremesa y patas de caucho
- Tornillos de instalación
- CD-ROM con manual / utilidad de configuración
- Guía de instalación rápida

Póngase en contacto con su distribuidor o proveedor inmediatamente si alguno de los artículos anteriores falta o se encuentra dañado.

Instalación

1. Desenrosque los dos tornillos de la parte posterior y extraiga el panel trasero.
2. Tire del panel delantero y de la bandeja interior.



3. Asegúrese de que el puente de su disco duro se encuentra colocado en la posición **Maestro**.
4. Instale su disco duro IDE o SATA de 3,5 pulgadas y conecte después los cables de datos y alimentación.



* Consulte las instrucciones de su disco duro, ya que podrían diferir según el fabricante.

Utilice entonces los tornillos suministrados para fijar el disco duro.



5. Instale el panel delantero.
La flecha de la carcasa indica la parte **delantera inferior**.



6. Vuelva a montar la cubierta trasera y apriete los dos tornillos.

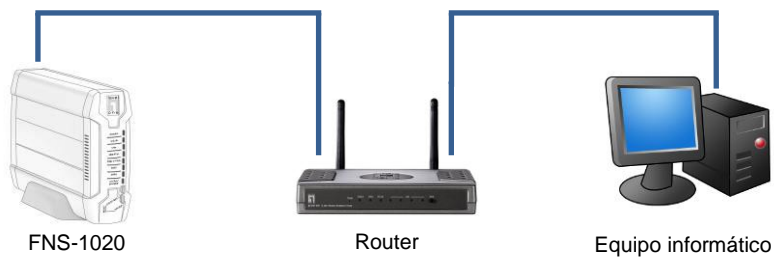


Conexión de los cables

1. Conecte ahora el adaptador de alimentación y el cable de red.



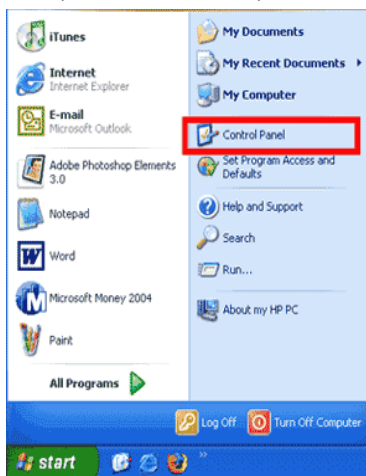
2. Conecte el dispositivo FNS-1020 a un router con conexión a Internet.



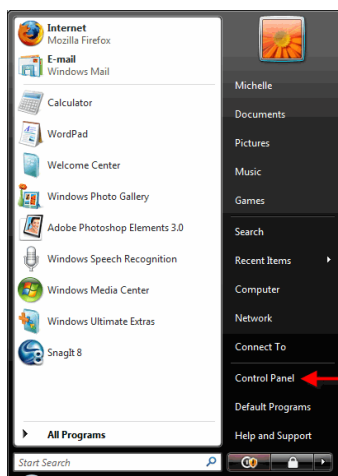
3. La instalación ha finalizado. Ahora puede encender el dispositivo y comenzar a configurar sus parámetros.

Comprobar la configuración de la red (Windows XP / Vista)

1. Haga clic en el botón Start (Inicio) y después en Control Panel (Panel de control).



Windows XP

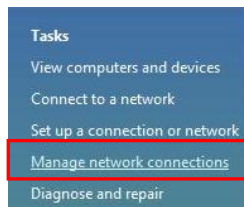


Windows Vista

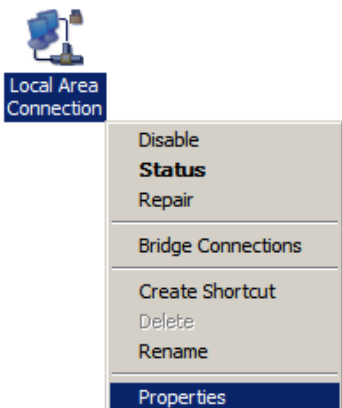
2. En Windows XP, haga clic en **[Network Connection]** (Conexión de red).



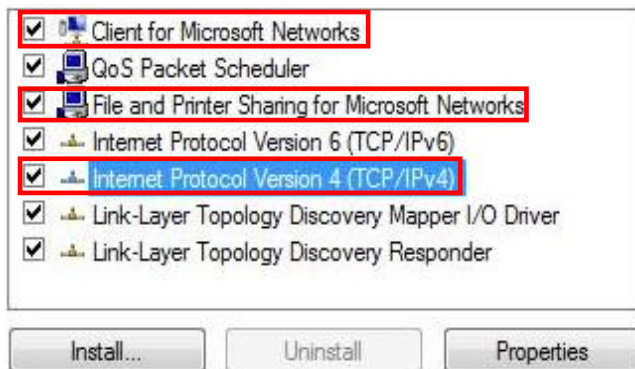
En Windows Vista, haga clic en **[View Network Status and Tasks]** (Ver el estado y las tareas de red) y después en **[Manage Network Connections]** (Administrar conexiones de red).



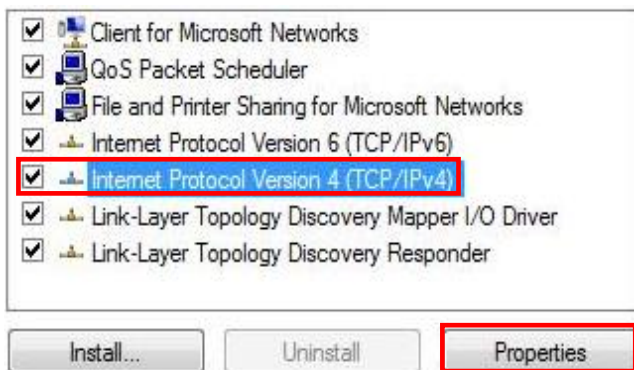
3. Haga clic con el botón secundario en **[Local Area Connection] (Conexión de área local)** y seleccione **[Properties] (Propiedades)**.



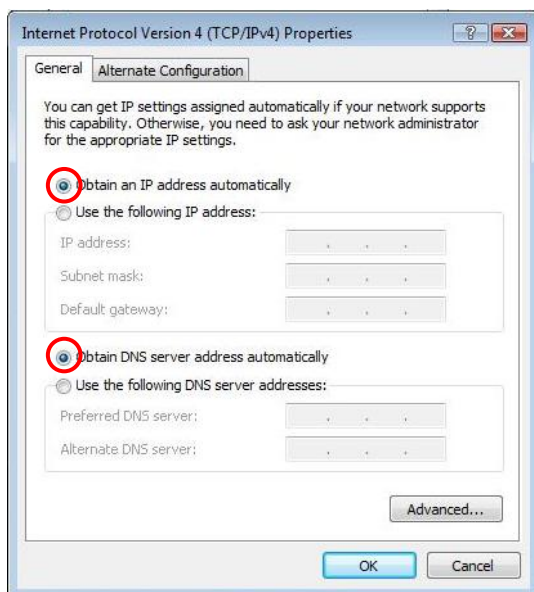
4. Compruebe que las opciones **“Client for Microsoft Networks” (Cliente para redes Microsoft)**, **“File and Printer Sharing” (Compartir archivos e impresoras)** e **“Internet Protocol (TCP/IP)” (Protocolo de Internet (TCP/IP))** se encuentren marcadas. De no ser así, instale los componentes correspondientes.



5. Seleccione **“Internet Protocol (TCP/IP)” (Protocolo de Internet (TCP/IP))** y haga clic en **[Properties] (Propiedades)**.

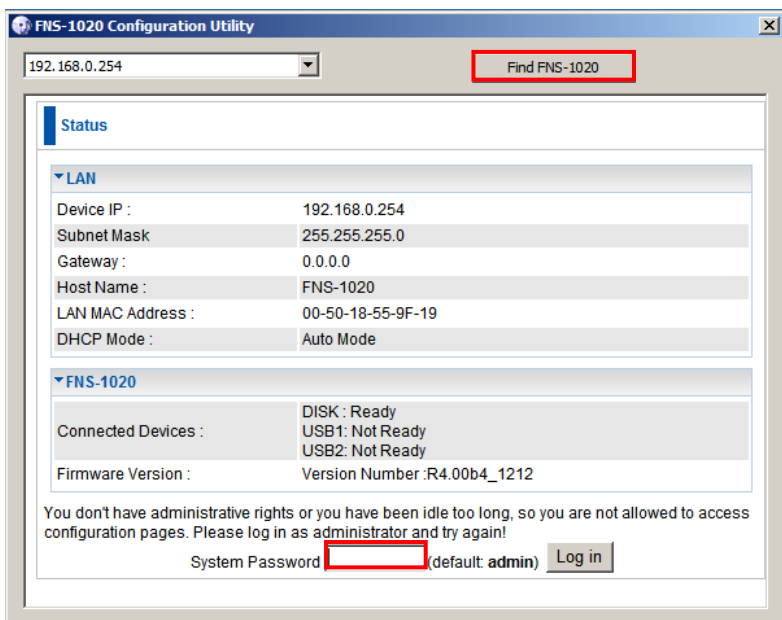


6. Seleccione las dos siguientes opciones y haga clic en **[OK] (Aceptar)**.



Configuración

1. Inserte el CD suministrado e instale la **Utility (Utilidad)**.
2. Utilice la Utilidad para buscar su FNS-1020.
3. Introduzca su contraseña (**admin**).
4. Haga clic en **Wizard (Asistente)** para configurar los parámetros de la red y el disco duro.



Si desea obtener más información acerca de la configuración, consulte el Manual de usuario que se incluye en el CD.

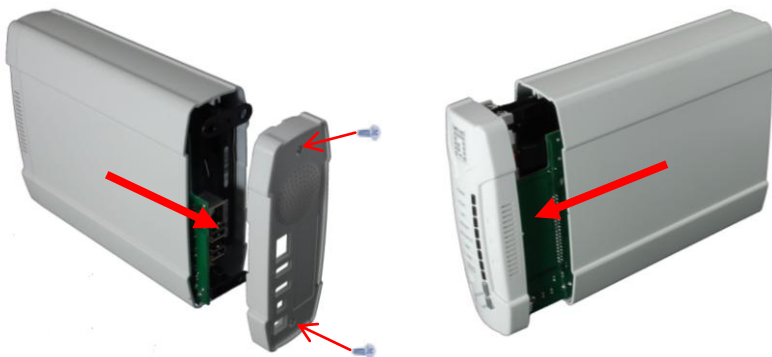
Inhoud verpakking

- FNS-1020 1-bay eenvoudige netwerkopslag
- Voedingsadapter (12VDC, 4A)
- RJ-45 LAN-ethernetkabel
- Bureauvoet en rubberen voetjes
- Installatieschroeven
- Cd-rom met handleiding / configuratiehulpprogramma
- Snelle installatiegids

Als een van de bovenstaande items ontbreekt, neem dan contact op met uw dealer of distributeur.

Installatie

1. Maak de twee schroeven op het achterpaneel los en verwijder het.
2. Trek het voorpaneel en de binnenlade uit.



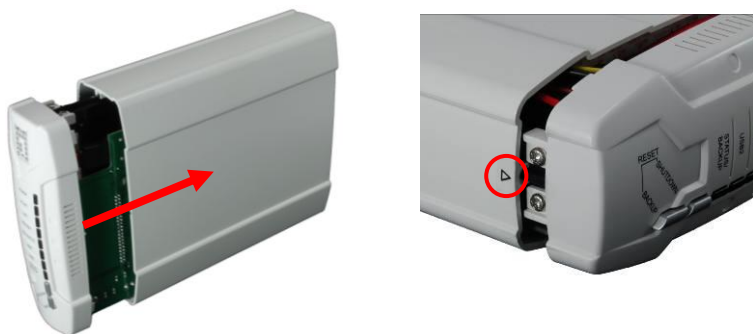
3. Controleer of de jumper op uw harde schijf is ingesteld op **Master**
4. Installeer uw 3,5" IDE of SATA harde schijf en sluit de gegevens- en voedingskabels aan. Gebruik daarna de bijgeleverde schroeven om de harde schijf vast te maken.



* Raadpleeg de instructies van uw harde schijf, omdat dit kan verschillen per fabrikant.



5. Plaats het voorpaneel terug.
De pijl op de behuizing geeft aan dat de **onderkant eerst** moet.



6. Plaats het achterpaneel terug en maak de twee schroeven vast.

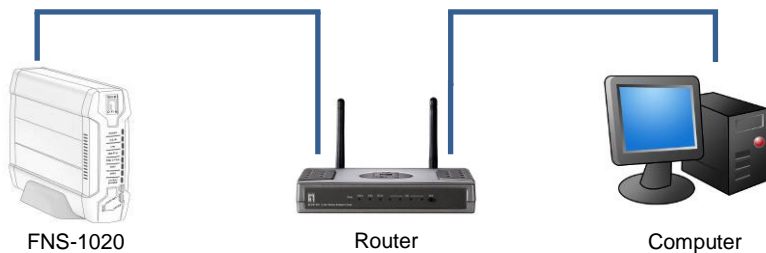


De kabels aansluiten

1. Sluit nu de voedingsadapter en netwerkkabel aan.



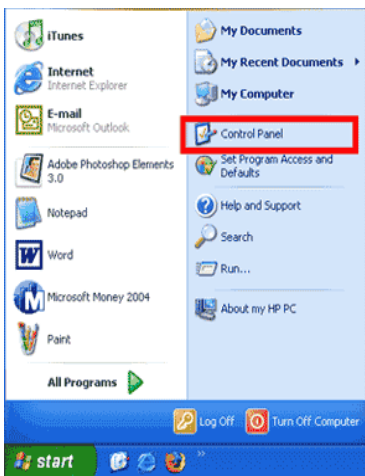
2. Sluit de FNS-1020 aan op een router met internetverbinding.



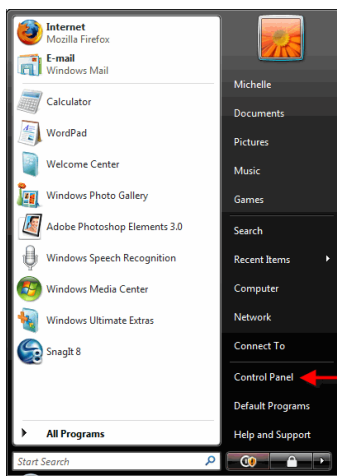
3. De installatie is nu voltooid. U kunt het apparaat inschakelen en beginnen met het configureren.

Netwerkinstellingen controleren (Windows XP / Vista)

1. Klik op de knop Start en open het Configuratiescherm.



Windows XP

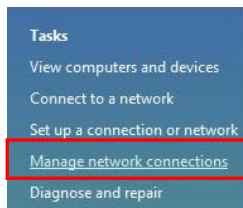


Windows Vista

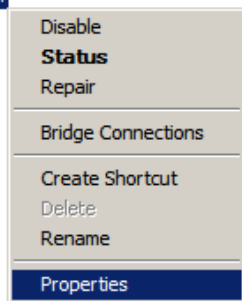
2. Klik in Windows XP, op **[Network Connection]** (**Netwerkverbinding**)



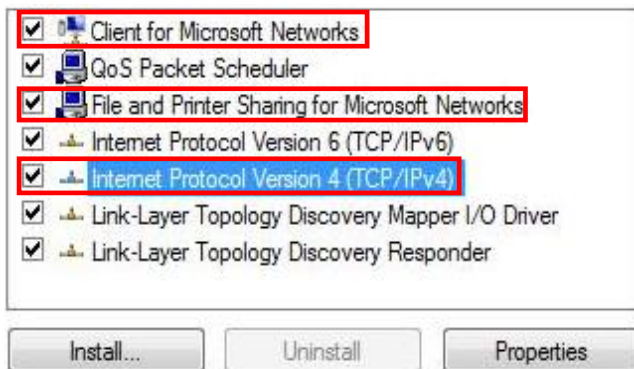
Klik in Windows Vista op **[View Network Status and Tasks]** (**Netwerkstatus en taken weergeven**) en daarna op **[Manage Network Connections]** (**Netwerkverbindingen beheren**)



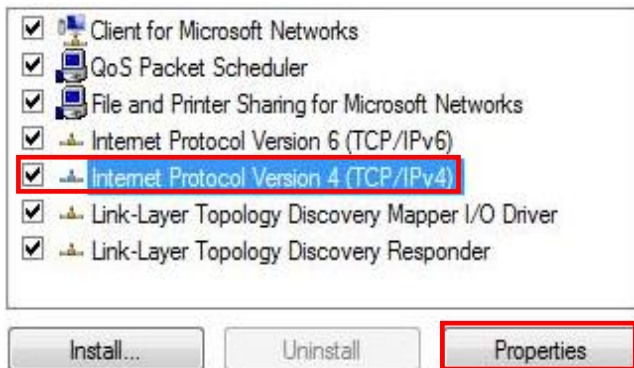
3. Klik met de rechtermuisknop op [Local Area Connection] (LAN-verbinding) en selecteer [Properties] (Eigenschappen).



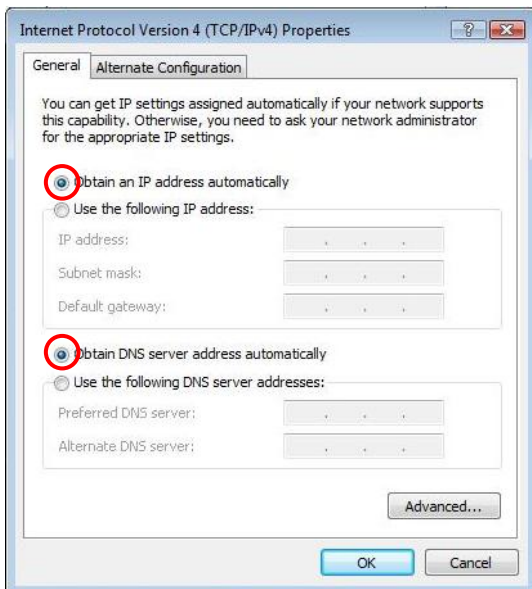
4. Controleer of “Client for Microsoft Networks” (Client voor Microsoft-netwerken), “File and Printer Sharing” (Bestands- en printerdeling) en “Internet Protocol (TCP/IP)” (Internet-protocol (TCP/IP)) zijn ingeschakeld. Installeer deze opties als dat niet het geval is.



5. Selecteer “**Internet Protocol (TCP/IP)**” (**Internet-protocol (TCP/IP)**) en klik op [**Properties**] (**Eigenschappen**)

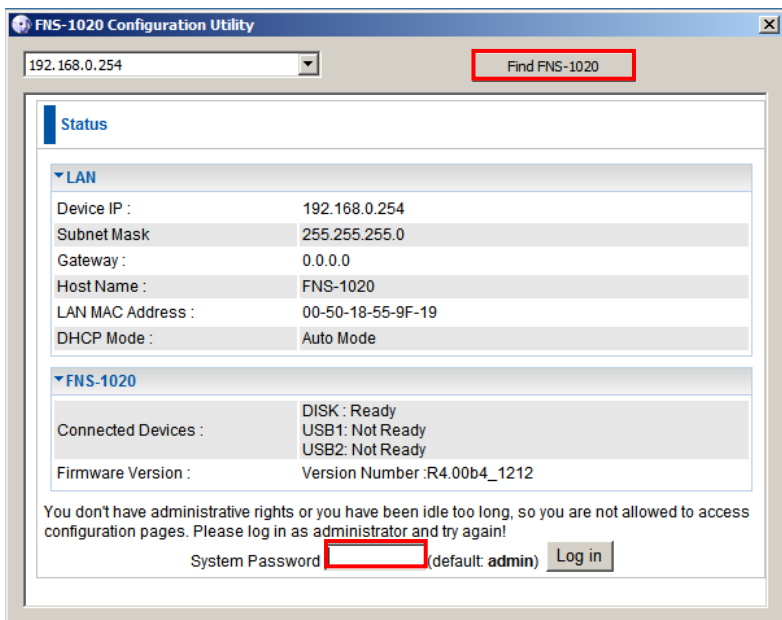


6. Selecteer deze twee opties en klik op [**OK**].



Configuratie

1. Plaats de bijgeleverde cd en installeer het **Utility (Hulpprogramma)**.
2. Gebruik het hulpprogramma om uw FNS-1020 te zoeken.
3. Voer het wachtwoord in (**admin**).
4. Klik op **Wizard** om de netwerkinstellingen en de harde schijf te configureren.



Raadpleeg de handleiding op de bijgeleverde cd voor een meer gedetailleerde configuratie.

Pakkeindhold

- FNS-1020 1-Bås Enkel Netværkslagring
- Strømadapter (12VDC, 4A)
- RJ-45 LAN Ethernet-kabel
- Skrivebordsstander og gummifødder
- Skruer til installation
- CD-ROM med brugervejledning / konfigurationsprogram
- Kvikinstallations-guide

Hvis noget af ovennævnte mangler, bedes du venligst kontakte din forhandler eller distributør.

Installation

1. Løsn de to skruer på bagsiden og fjern bagpanelet.



2. Træk forpanelet og den indvendige bakke ud.



3. Kontroller, at bøjlen på harddiskdrevet står på **Master**



* Se instruktionerne på harddiskdrevet, da det kan afvige producenterne imellem.

4. Installer 3,5" IDE eller SATA harddiskdrevet og forbind data- og strøm-kablerne.

Fastgør derefter harddiskdrevet med de medfølgende skruer.



5. Sæt forpanelet på plads igen.
Pilen på huset angiver **forside nederst**.



6. Set bagpanelet på plads igen og stram de to skruer.

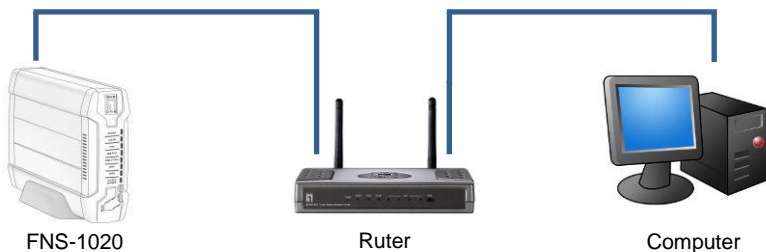


Tilslutning af kabler

1. Tilslut strømadapter og netværkskabel.



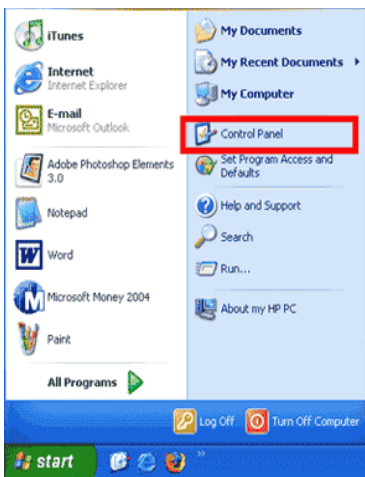
2. Forbind FNS-1020 til en internet-forberedt ruter.



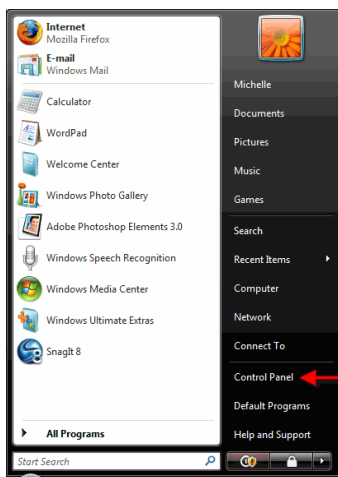
3. Installationen er nu fuldført. Du kan nu tænde for enheden og begynde at konfigurere indstillingerne.

Tjek netværksindstillinger (Windows XP / Vista)

1. Klik på startknappen og åbn kontrolpanelet.



Windows XP

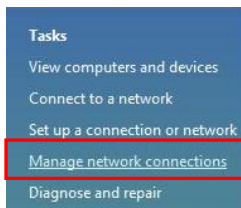


Windows Vista

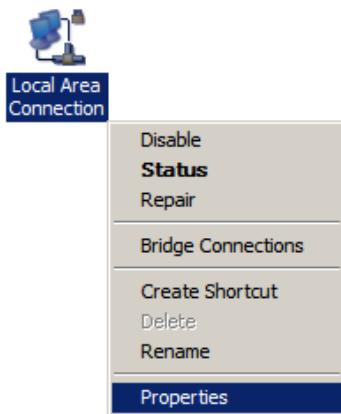
2. Windows XP, klik på **[Network Connection]** (**Netværksforbindelse**)



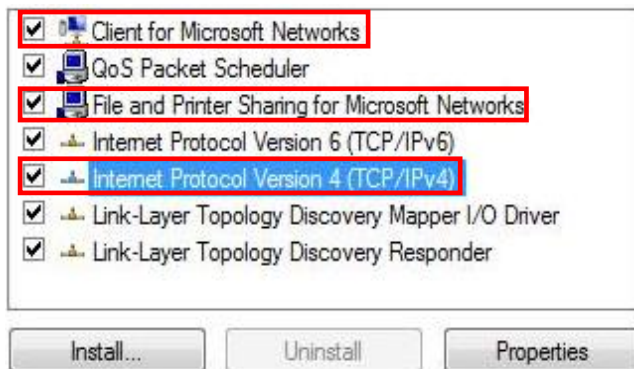
Windows Vista, klik på **[View Network Status and Tasks]** (**Se netværksstatus og opgaver**) og derefter på **[Manage Network Connections]** (**Styr netværksforbindelser**)



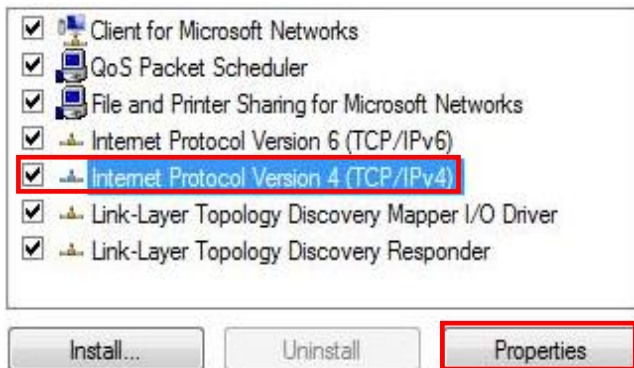
3. Højreklik på [Local Area Connection] (Lokalområdeforbindelse) og vælg [Properties] (Egenskaber).



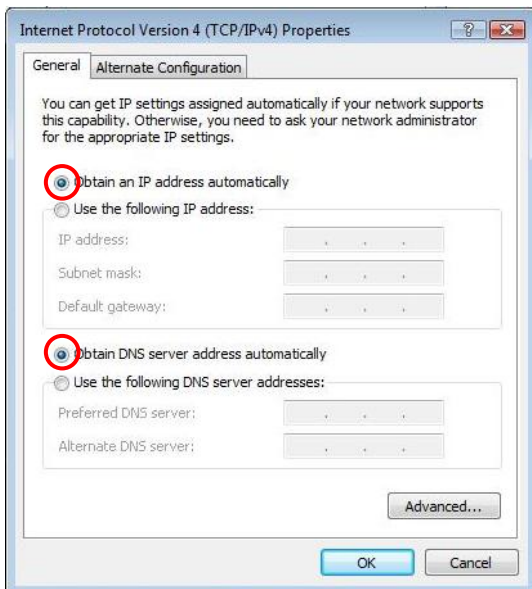
4. Kontroller, at “Client for Microsoft Networks” (Klient til Microsoft netværk), “File and Printer Sharing” (Fil- og printerdeling) og “Internet Protocol (TCP/IP)” (Internet-protokol (TCP/IP)) er afmærket. Hvis ikke, installer det.



5. Vælg “**Internet Protocol (TCP/IP)**” (**Internet-protokol (TCP/IP)**) og klik på [**Properties**] (**Egenskaber**)

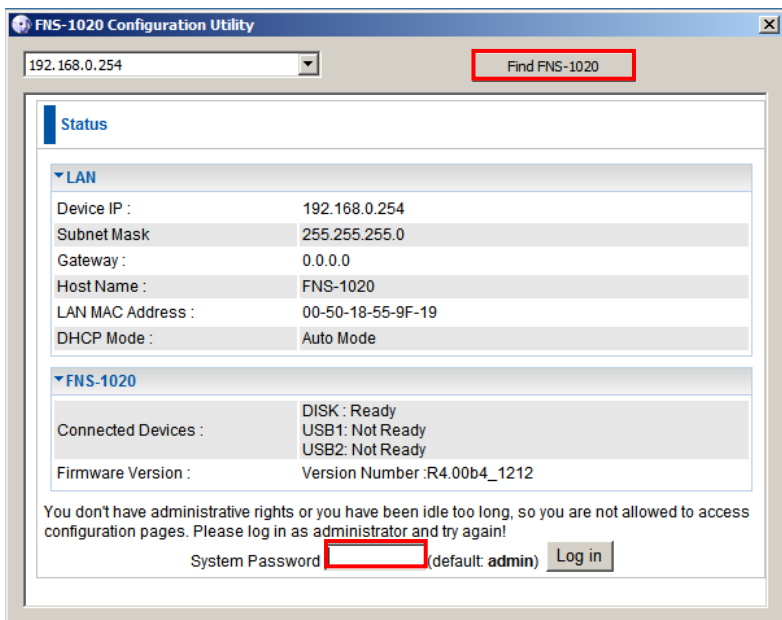


6. Vælg disse to funktioner og klik på [**OK**].



Konfiguration

1. Anbring den medfølgende cd og installer **Utility (Hjælpeprogram)**.
2. Brug hjælpeprogrammet til at finde FNS-1020.
3. Indtast adgangskode (**admin**).
4. Klik på **Wizard (Guide)** for at foretage netværksindstillingerne og konfigurationen af harddiskdrevet.



For yderligere oplysninger vedrørende konfiguration, se venligst brugervejledningen på den medfølgende cd.

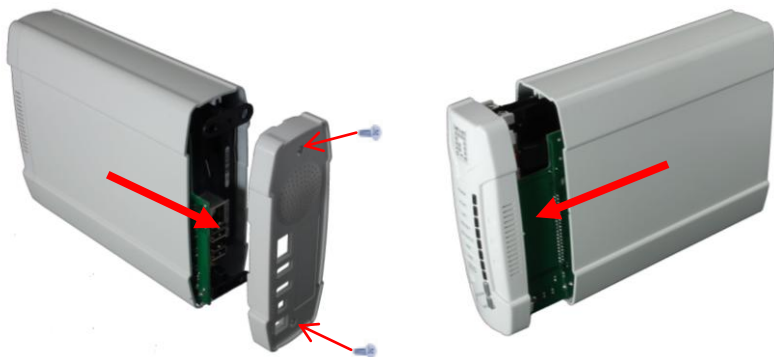
Contenuti della confezione

- FNS-1020 storage di rete con 1 slot
- Alimentatore (12V CC, 4A)
- Cavo Ethernet RJ-45 LAN
- Base da tavolo e piedini di gomma
- Viti per l'installazione
- CD-ROM con Manuale / Utility di configurazione
- Guida rapida all'installazione

Mettersi in contatto con il rivenditore o distributore se manca uno qualsiasi degli elementi sopra indicati.

Installazione

1. Allentare le due viti sul retro e rimuovere il pannello posteriore.
2. Estrarre il pannello posteriore ed il cassetto interno.



3. Assicurarsi che il jumper del disco rigido sia impostato su **Master**
4. Installare l'unità disco IDE o SATA 3,5 pollici e collegare il cavo dati e d'alimentazione. Poi usare le viti in dotazione per fissare il disco rigido.



* Consultare le istruzioni del disco rigido poiché sono diverse per ciascun produttore.



5. Rimettere il pannello frontale.
La freccia sulla copertura indica la parte **inferiore frontale**.



6. Rimontare la copertura posteriore e stringere le due viti.

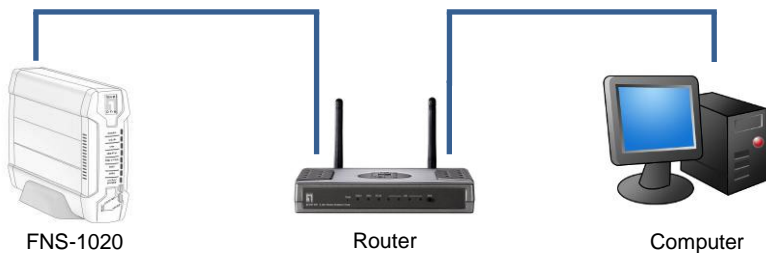


Collegamento dei cavi

1. Collegare l'alimentatore ed il cavo di rete.



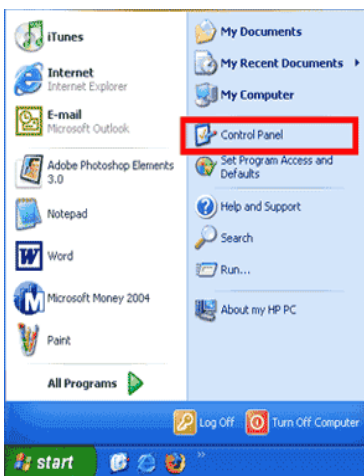
2. Collegare FNS-1020 ad un router con collegamento ad Internet.



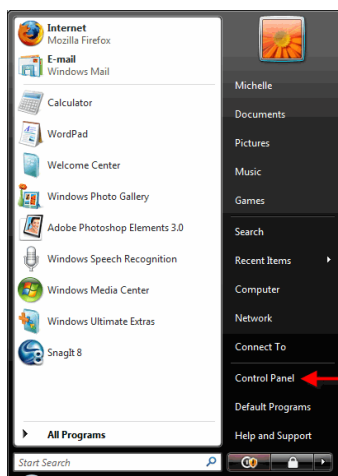
3. L'installazione è completata. Adesso si può accendere l'unità ed iniziare a configurare le impostazioni.

Controllo delle impostazioni di rete (Windows XP / Vista)

1. Fare clic sul tasto Start ed aprire il Pannello di controllo.



Windows XP



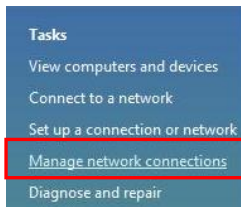
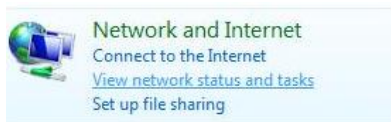
Windows Vista

2. Windows XP, fare clic su [Connessione di rete]

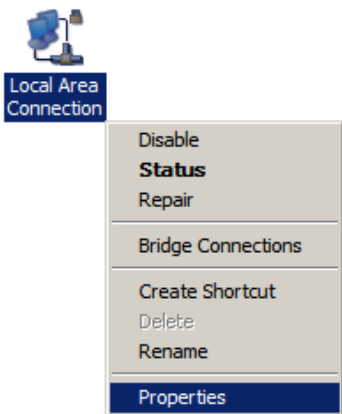


Windows Vista, fare clic su [Visualizza stato della rete e attività]

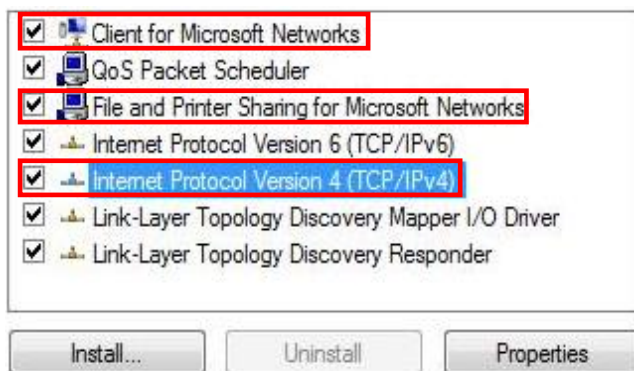
E successivamente [Gestisci connessioni di rete]



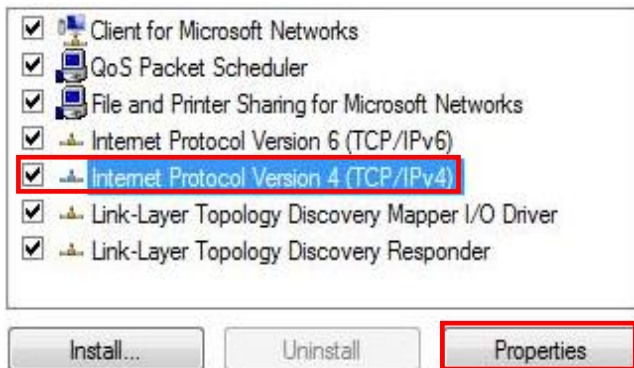
3. Fare clic col tasto destro del mouse su [**Connessione alla rete locale**] e selezionare [**Proprietà**].



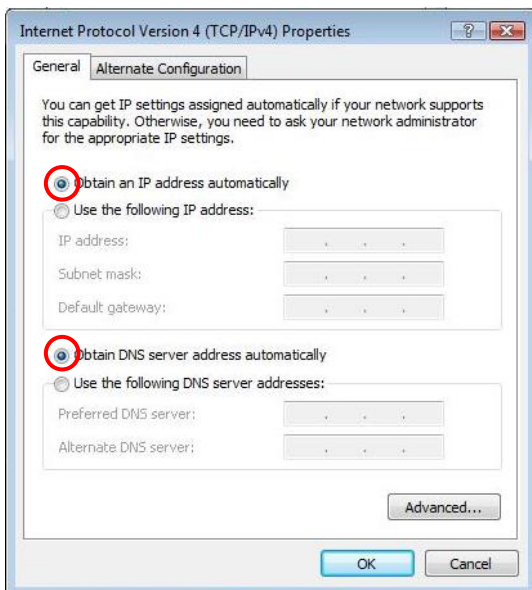
4. Verificare che “**Client per reti Microsoft**”, “**Condivisione file e stampanti**” e “**Protocollo Internet TCP/IP**” siano selezionate. In caso contrario, eseguire l’installazione.



5. Selezionare “**Protocollo Internet TCP/IP**” e fare clic su **[Proprietà]**

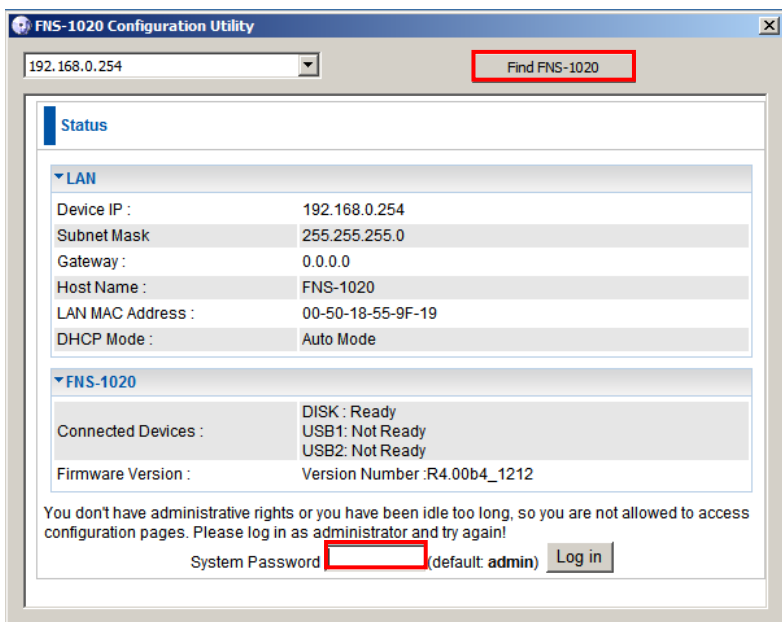


6. Selezionare queste due opzioni e fare clic su **[OK]**.



Configurazione

1. Inserire il CD in dotazione ed installare il software.
2. Utilizzare il software per rilevare FNS-1020.
3. Inserire la password (**admin**).
4. Fare clic su **Wizard (Procedura guidata)** per configurare le impostazioni di rete e il disco rigido.



Per altre informazioni dettagliate, consultare il Manuale d'uso contenuto nel CD fornito in dotazione.

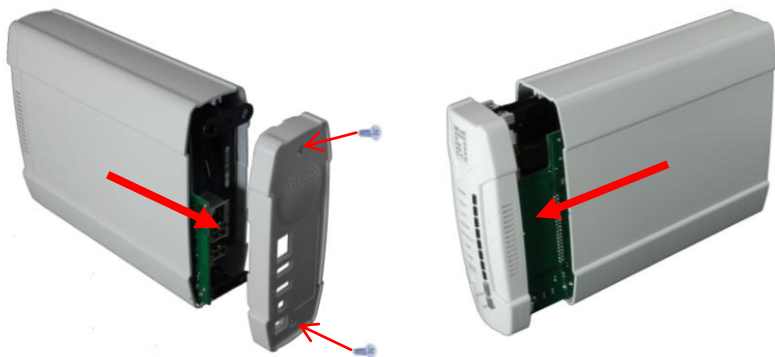
Περιεχόμενα Συσκευασίας

- FNS-1020 1-Bay (Δικτυακό μέσο αποθήκευσης για ένα δίσκο)
- Προσαρμογέας τροφοδοτικού (12VDC, 4A)
- RJ-45 LAN Καλώδιο Ethernet
- Επιτραπέζια βάση
- Βίδες συναρμολόγησης
- CD-ROM με εγχειρίδιο / Βοηθητικό πρόγραμμα ρύθμισης
- Οδηγός Γρήγορης Εγκατάστασης

Εάν κάποιος από τα παραπάνω αντικείμενα λείπει, επικοινωνήστε με τον έμπορο ή τον διανομέα.

Εγκατάσταση

1. Ξεβιδώστε τις δύο βίδες από το πίσω μέρος και αφαιρέστε το πίσω μέρος.
2. Τραβήξτε το μπροστινό μέρος κρατώντας το μεσαίο σταθερό.



3. Βεβαιωθείτε ότι το Jumper στη μονάδα σκληρού δίσκου έχει οριστεί σαν **Master**.
4. Εγκαταστήστε τον δίσκο IDE 3,5" ή τον SATA και συνδέστε τα καλώδια δεδομένων και τροφοδοσίας. Κατόπιν χρησιμοποιήστε τις βίδες που περιλαμβάνονται στη συσκευασία για να στερεώσετε τον σκληρό δίσκο.



* Συμβουλευτείτε τις οδηγίες για τον σκληρό σας δίσκο καθώς διαφέρει για κάθε κατασκευαστή.



5. Τοποθετήστε το μπροστινό μέρος.
Το βέλος στο περίβλημα υποδεικνύει το **μπροστά κάτω**.



6. Συναρμολογήστε το πίσω κάλυμμα και συνδέστε τις δύο βίδες.



Σύνδεση των καλωδίων

1. Συνδέστε το τροφοδοτικό και το καλώδιο δικτύου.



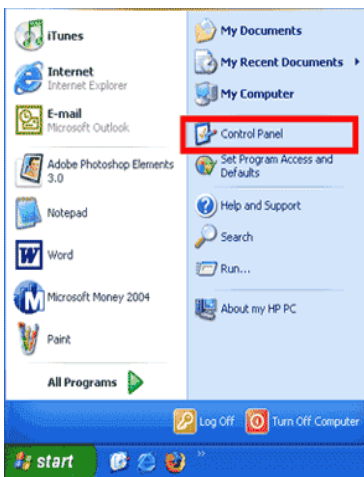
2. Συνδέστε το FNS-1020 σε έναν εγκατεστημένο Δρομολογητή (Router) στο δίκτυό σας..



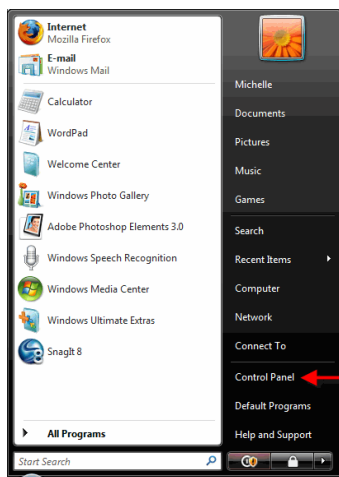
3. Η εγκατάσταση έχει πλέον ολοκληρωθεί. Μπορείτε τώρα να ενεργοποιήσετε τη συσκευή και ξεκινήσετε να διαμορφώνετε τις ρυθμίσεις.

Έλεγχος των ρυθμίσεων (Windows XP / Vista)

1. Πατήστε το πλήκτρο Έναρξης και ανοίξτε τον Πίνακα Ελέγχου.



Windows XP

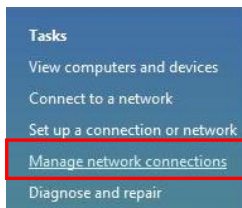


Windows Vista

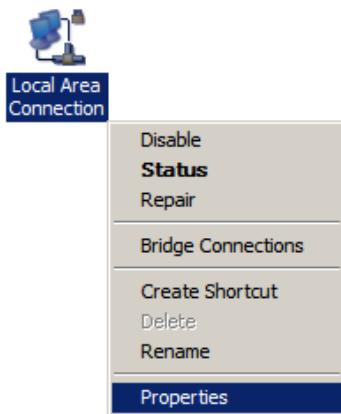
2. Για Windows XP, πατήστε [**Network Connection**] (Σύνδεση)



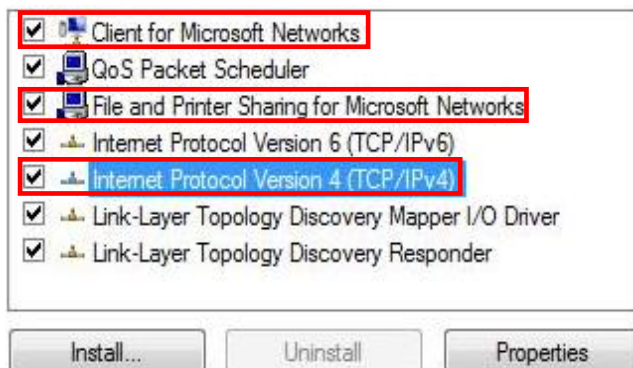
Για Windows Vista, πατήστε [**View Network Status and Tasks**] (Προβολή Κατάστασης και Εργασιών δικτύου) κατόπιν [**Manage Network Connections**] (Διαχείριση συνδέσεων δικτύου)



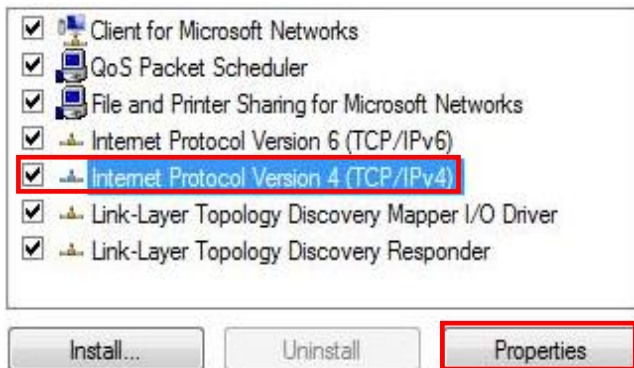
3. Κάντε δεξί κλικ στο [Local Area Connection] (Σύνδεση τοπικού δικτύου) και επιλέξτε [Properties] (Ιδιότητες).



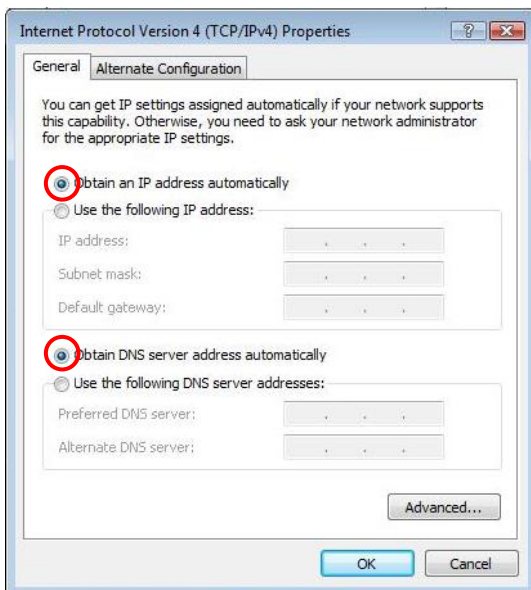
4. Επιλέξτε το “Client for Microsoft Networks” (Πελάτης για Δίκτυα Microsoft), “File and Printer Sharing” (Κοινή χρήση αρχείου και εκτυπωτή) και επιλέξτε το “Internet Protocol (TCP/IP)” (Πρωτόκολλο διαδικτύου (TCP/IP)). Εάν όχι, εγκαταστήστε τα.



5. Επιλέξτε “Internet Protocol (TCP/IP)” (Πρωτόκολλο διαδικτύου (TCP/IP)) και κάντε κλικ [Properties] (Ιδιότητες)

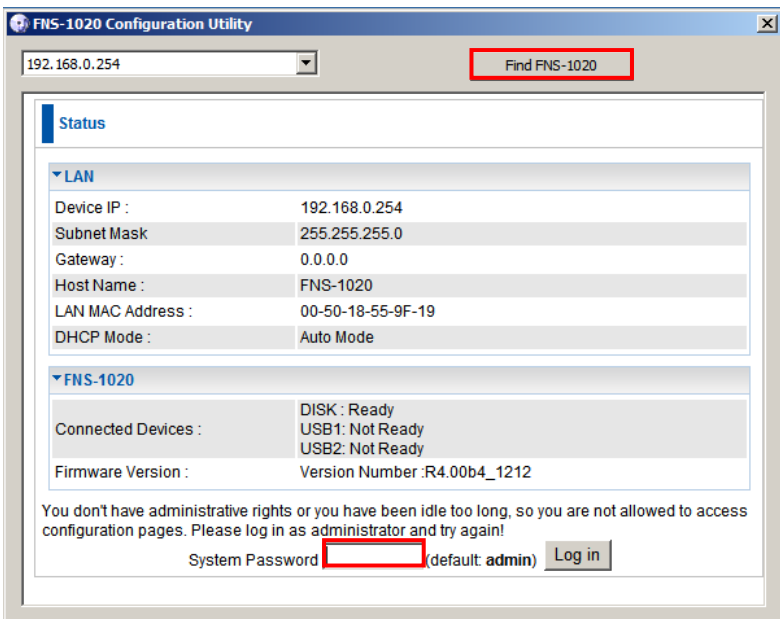


6. Επιλέξτε αυτές τις δύο επιλογές και κάντε κλικ [OK].



Διαμόρφωση

1. Εισάγετε το CD που συμπεριλαμβάνεται στη συσκευασία και εγκαταστήστε το **Utility (Βοηθητικό πρόγραμμα)**.
2. Χρησιμοποιήστε το Βοηθητικό πρόγραμμα για να βρείτε το FNS-1020 σας.
3. Εισάγετε τον κωδικό πρόσβασης ((**admin**)).
4. Κάντε κλικ στο **Wizard (Οδηγός)** για να εγκαταστήσετε τις ρυθμίσεις του δικτύου και τη διαμόρφωση του σκληρού δίσκου.



Για πιο λεπτομερή διαμόρφωση, συμβουλευτείτε το Εγχειρίδιο χρήσης στο CD που περιλαμβάνεται στη συσκευασία.

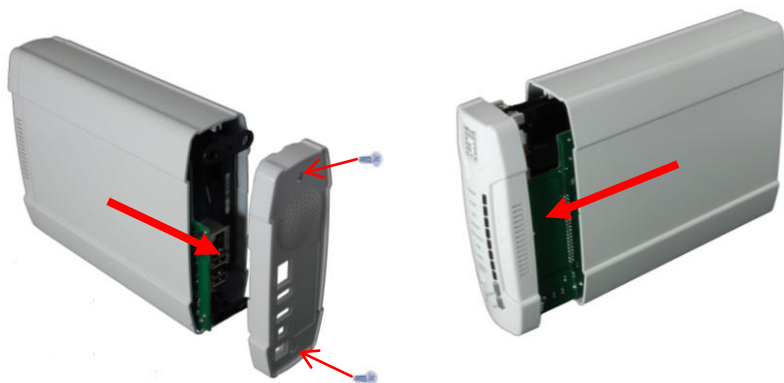
Conteúdo da embalagem

- Armazenagem de rede simples FNS-1020 1-Bay
- Adaptador de alimentação (12VDC, 4A)
- Cabo Ethernet RJ-45 LAN
- Pés de borracha e suporte de área de trabalho
- Parafusos de instalação
- CD-ROM com utilitário de configuração / manual
- Guia de instalação rápida

Se qualquer item acima não for encontrado entre em contato com seu fornecedor ou distribuidor.

Instalação

1. Desaperte os dois parafusos da parte de trás e remova o painel de trás.
2. Retire o painel e bandeja interna.



3. Verifique se o jumper no seu disco rígido está configurado para **Master**.



* Consulte as instruções no seu disco rígido uma vez que difere de cada fabricante.

4. Instale seu disco rígido IDE ou SATA de 3,5" e conecte os cabos de alimentação e de dados.

Use depois os parafusos fornecidos para prender o disco rígido.



5. Coloque o painel frontal.
A seta na caixa indica **frontal inferior**.



6. Monte novamente a tampa de trás e aperte os dois parafusos.

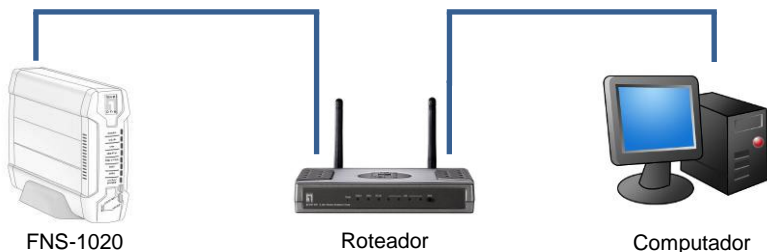


Conexão dos cabos

1. Conecte agora o adaptador de alimentação e o cabo de rede.



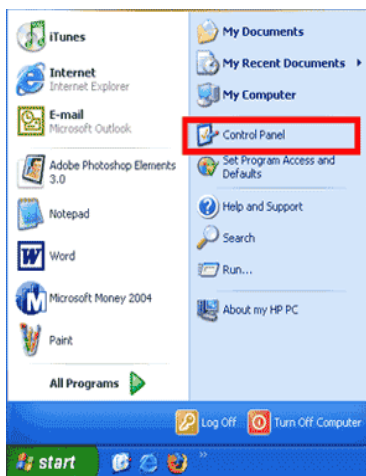
2. Conecte o FNS-1020 no roteador pronto de internet.



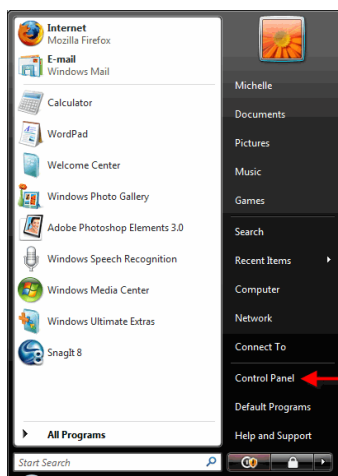
3. A instalação foi concluída agora. Você pode agora ligar o aparelho e começar a fazer as configurações.

Verificação das configurações de rede (Windows XP / Vista)

1. Clique no botão Start (Iniciar) e abra o painel de controle.



Windows XP

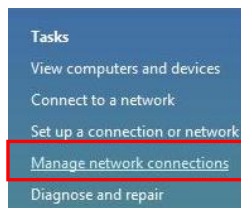
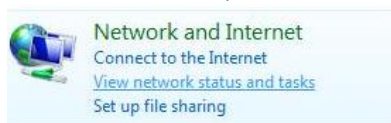


Windows Vista

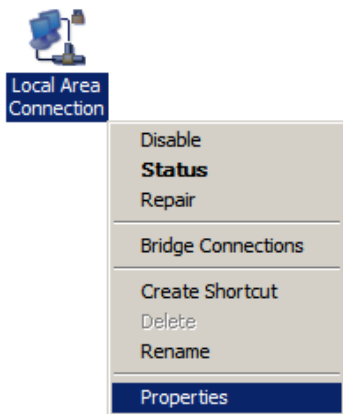
2. Windows XP, clique em [Network Connection] (Conexões de rede)



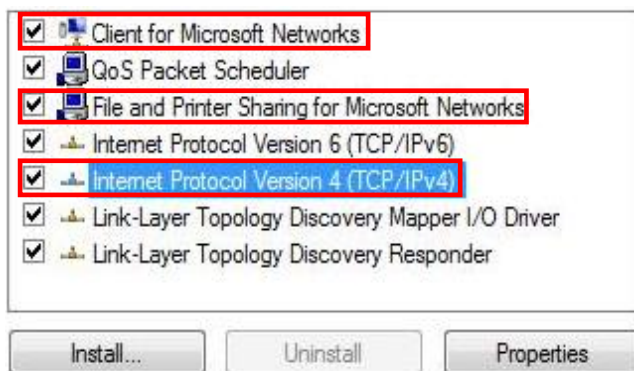
Windows Vista, clique em [View Network Status and Tasks] (Ver status de rede e tarefas)
E depois em [Manage Network Connections] (Gerenciar conexões de rede)



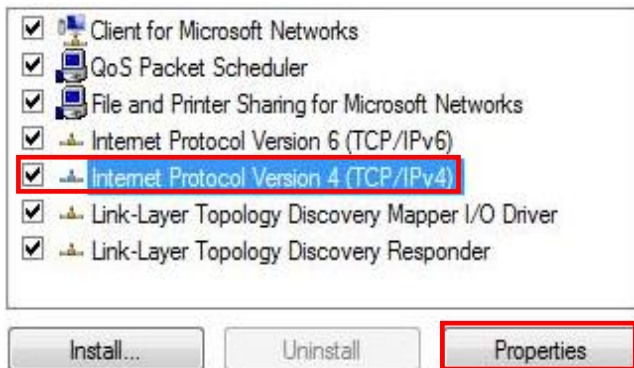
3. Clique à direita no [Local Area Connection] (Conexões de área local) e selecione [Properties] (Propriedades).



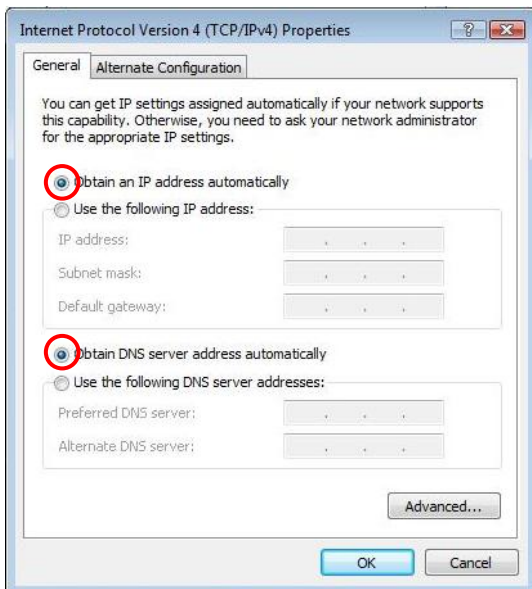
4. Selecione “Client for Microsoft Networks” (Cliente para redes Microsoft), “File and Printer Sharing” (Compartilhar arquivo e impressora) e “Internet Protocol (TCP/IP)” (Protocolo de internet (TCP/IP)) é marcado. Caso contrário, instale-os.



5. Selecione “**Internet Protocol (TCP/IP)**” (Protocolo de internet (TCP/IP)) e clique em [Properties] (Propriedades)

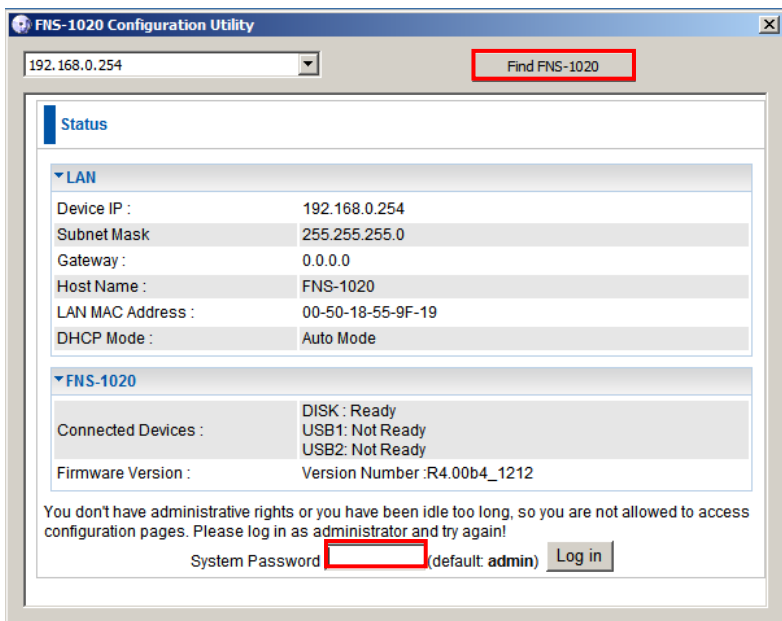


6. Selecione as duas opções e clique em [OK].



Configuração

1. Insira o CD incluído e instale o **Utility (Utilitário)**.
2. Use o utilitário para localizar seu FNS-1020.
3. Digite a senha (**admin**).
4. Clique em **Wizard (Assistente)** para fazer as configurações de rede e do disco rígido.



Para obter mais informações sobre a configuração consulte o manual de usuário no CD incluído.

Förpackningens innehåll

- FNS-1020 1-Bay enkel nätverkslagring
- Strömadapter (12VDC, 4A)
- RJ-45 LAN Ethernetkabel
- Skrivbordsställning och gummifötter
- Installationsskruvar
- CD-skiva med manual / konfigurationsverktyg
- Snabbinstallationsguide

Om någon av ovanstående poster saknas kontakta din återförsäljare eller distributör.

Installation

1. Lossa de två skruvarna på baksidan och ta bort bakpanelen.



2. Dra ut frontpanelen och inre brickan.



3. Se till att bygeln på hårddisken är inställd på **Master**



* Läs instruktionerna för din hårddisk eftersom de skiljer sig mellan olika tillverkare.

4. Installera din 3,5 tum IDE eller SATA hårddisk och anslut data- och strömkablarna.

Använd sedan de medföljande skruvarna för att fästa hårddisken.



5. Sätt tillbaka frontpanelen.
Pilen på höljet indikerar **underkant framsida**.



6. Sätt tillbaka bakstycket och fäst de två skruvarna.

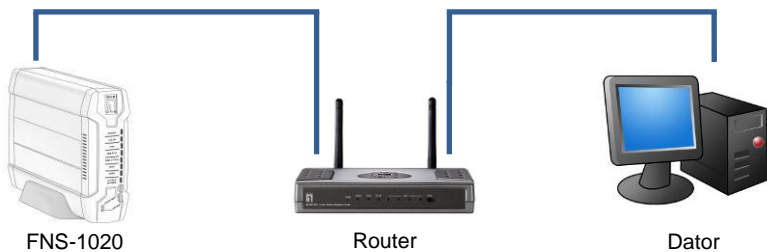


Ansluta kablarna

1. Anslut strömadaptern och nätverkskabeln.



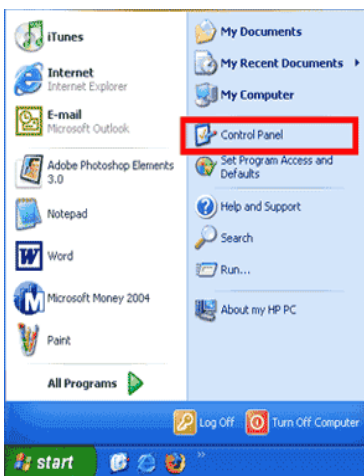
2. Anslut FNS-1020 till en internetredö router.



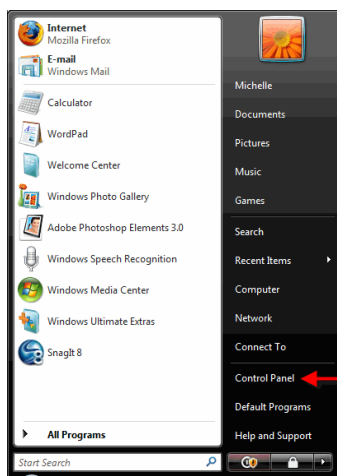
3. Installationen är nu klar. Du kan nu slå på enheten och börja konfigurera inställningarna.

Kontrollera nätverksinställningarna (Windows XP / Vista)

1. Klicka på Start-knappen för att öppna kontrollpanelen.



Windows XP

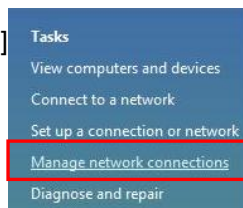
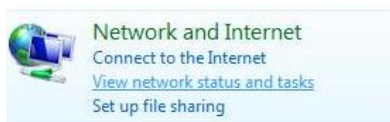


Windows Vista

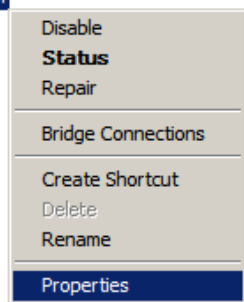
2. Windows XP, klicka på **[Network Connection]** (Nätverksanslutning)



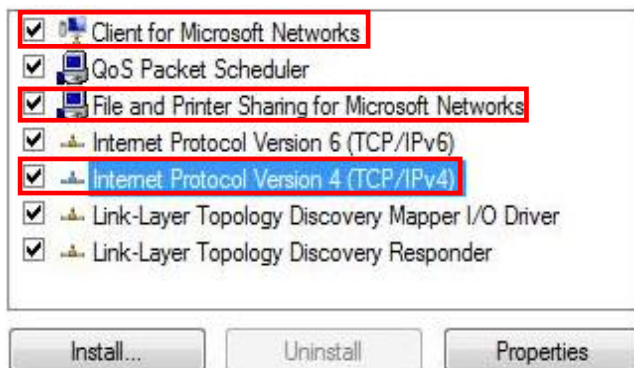
Windows Vista, klicka på **[View Network Status and Tasks]** (Visa nätverksstatus och åtgärder) sedan **[Manage Network Connections]** (Hantera nätverksanslutningar)



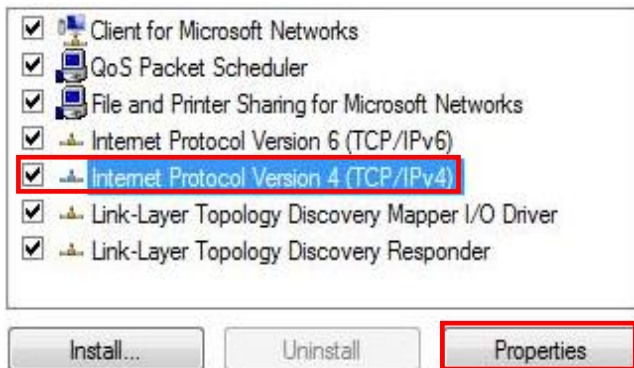
3. Högerklicka på [Local Area Connection] (Anslutning till lokalt nätverk) och välj [Properties] (Konfigurera).



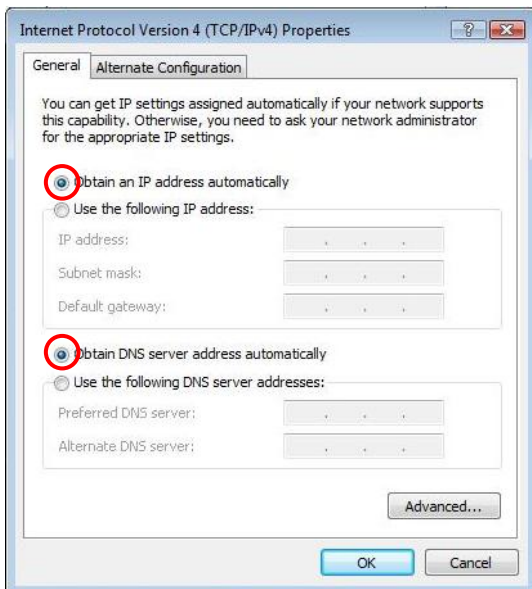
4. Markera "Client for Microsoft Networks" (Klient för Microsoft nätverk), "File and Printer Sharing" (Fil och skrivardelning) och "Internet Protocol (TCP/IP)" (Internetprotokoll (TCP/IP)) är markerat, om inte installera dem.



5. Välj ”Internet Protocol (TCP/IP)” (Internetprotokoll (TCP/IP)) och klicka på [Properties] (Egenskaper)

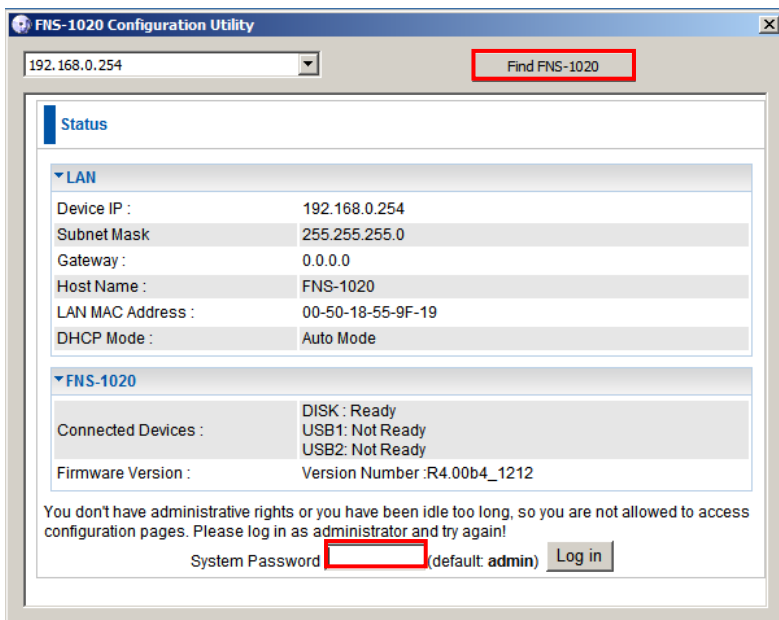


6. Välj dessa två alternativ och klicka på [OK].



Konfiguration

1. Mata in den medföljande CD-skivan och installera **Utility (Verktyget)**.
2. Använd verktyget för att hitta din FNS-1020.
3. Ange lösenordet (**admin**).
4. Klicka på **Wizard (Guiden)** för att ställa in nätverksinställningarna och hårdvarukonfigurationen.



För mer detaljerad konfiguration, konsultera Bruksanvisningen på den medföljande CD-skivan.

Vsebina paketa

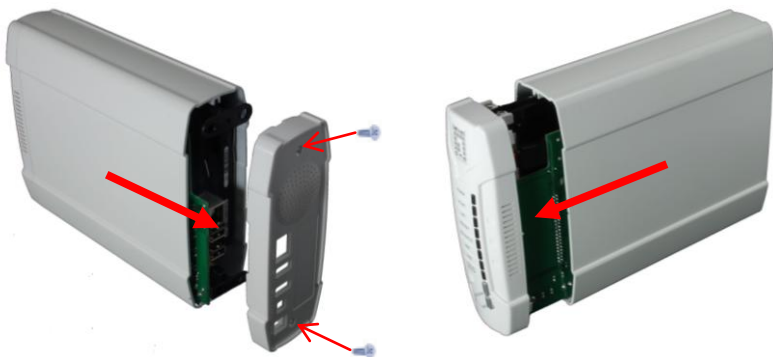
- FNS-1020 mrežna shramba za en disk
- Napajalni adapter (12 V DC, 4 A)
- RJ-45 mrežni kabel
- Namizno stojalo in gumijaste nožice
- Namestitveni vijaki
- CD-ROM medij z navodili / konfiguracijskimi orodji

Hitri namestitveni vodič

Če kateri od zgornjih elementov manjka, se prosimo posvetujte s trgovcem ali distributerjem.

Namestitev

1. Odvijte dva vijaka na zadnji strani in odstranite zadnjo ploščo.
2. Izvlecite sprednjo ploščo in notranji pladenj.



3. Prepričajte se, da je jahač na trdem disku nastavljen na **Master**.
4. Namestite 3,5 palčni IDE ali SATA trdi disk in povežite podatkovni ter napajalni kabel. Nato s priloženimi vijaki pritrdite trdi disk.



* Če se trdi disk razlikuje od prikazanega, si pomagajte z navodili za uporabo trdega diska.



5. Namestite na sprednjo ploščo.
Puščica na ohišju prikazuje spodnji del sprednje plošče.



6. Pritrdite zadnji pokrov in privijte vijake.



Priključevanje kablov

1. Sedaj priključite napajalni adapter in omrežni kabel.



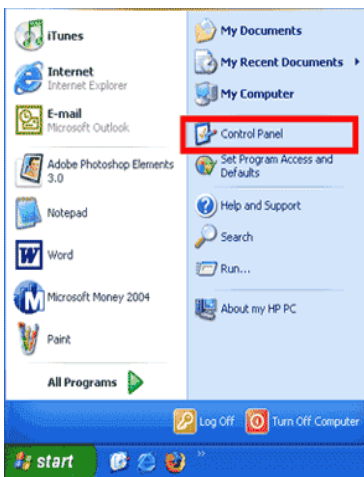
2. Priključite FNS-1020 na usmerjevalnik, ki je povezan v svetovni splet.



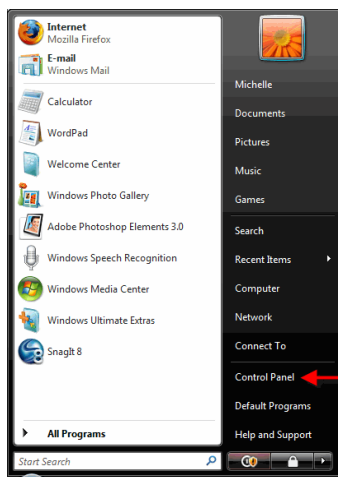
3. Namestitev je tako dokončana. Sedaj lahko vključite napravo in začnete s konfiguracijo nastavitvev.

Preverite omrežne nastavitve (Windows XP / Vista)

1. Kliknite gumb Start in odprite Control Panel (Nadzorno ploščo)



Windows XP

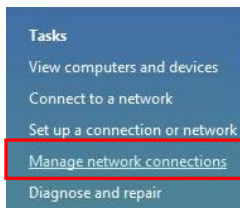


Windows Vista

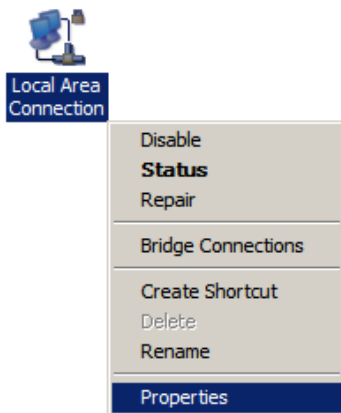
2. Windows XP, kliknite **[Network Connection]** (Omrežna povezava)



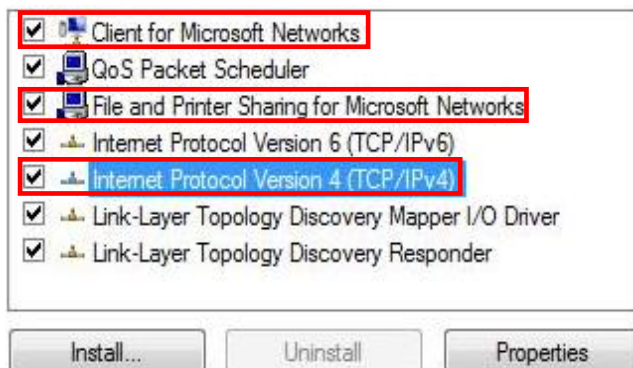
Windows Vista, kliknite **[View Network Status and Tasks]** (Oglej si stanje omrežja in naloge) nato pa **[Manage Network Connections]** (Upravljanje omrežnih povezav)



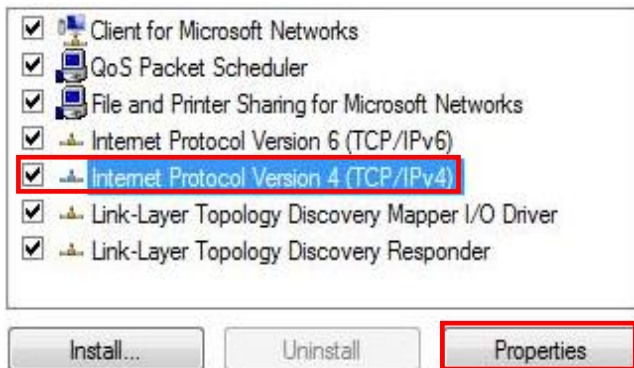
3. Desno-kliknite [**Local Area Connection**] (**Lokalna internetna povezava**) in izberite [**Properties**] (**Lastnosti**).



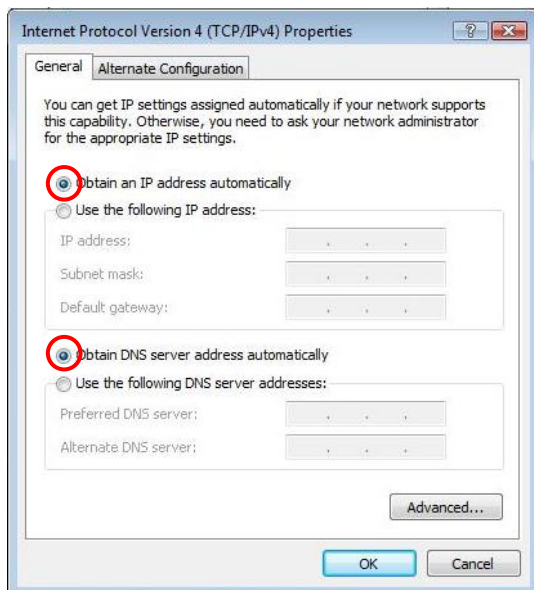
4. Preverite, ali so možnosti “**Client for Microsoft Networks**” (**Odjemalec za Microsoftovo omrežje**), “**File and Printer Sharing**” (**Skupna raba datotek in tiskalnikov**) ter “**Internet Protocol (TCP/IP)**” (**Internetni protocol (TCP/IP)**) odključane. Če niso, jih prosimi namestite.



5. Izberite “Internet Protocol (TCP/IP)” (Internetni protokol (TCP/IP)), nato kliknite “Properties”(Lastnosti).

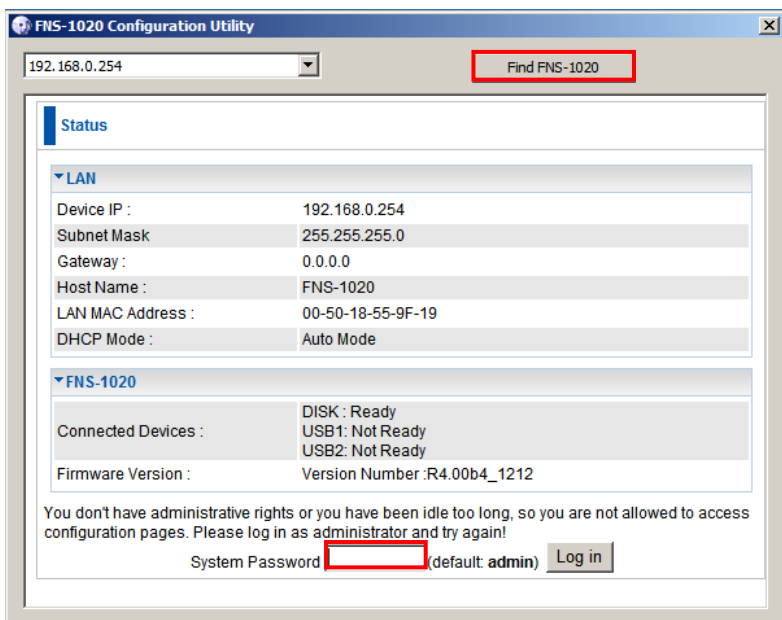


6. Izberite ti dve možnosti in kliknite [OK] (V rdeu).



Konfiguracija

1. Vstavite priloženi CD in namestite **Utility (Pripomoček)**.
2. Uporabite Utility (Pripomoček) in poiščite vaš FNS-1020.
3. Prosimo, vnesite geslo (**admin**).
4. Kliknite **Wizard (Čarovnik)** in nastavite omrežne nastavitve in konfiguracijo trdega diska.



Za podrobnejše informacije prosimo glejte uporabniški priročnik, ki se nahaja na CD-ju.

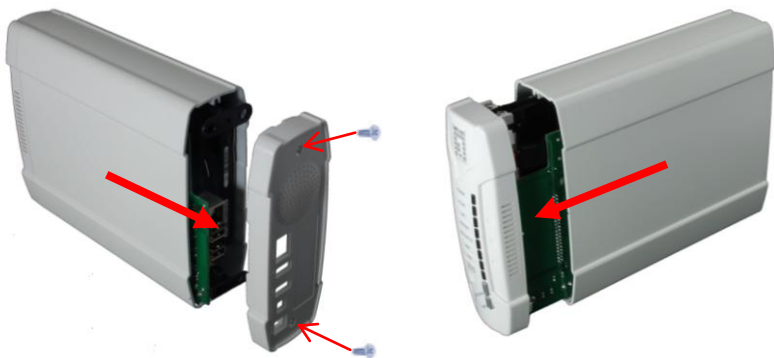
包裝內容物

- FNS-1020 1-Bay 簡易網路儲存伺服器
- 電源變壓器 (12VDC, 4A)
- RJ-45 LAN 乙太網路線
- 桌面底座及橡膠腳墊
- 安裝螺絲
- 手冊／設定公用程式光碟
- 快速安裝指南

若缺少上述任一項物品，請與您的零售商或經銷商聯絡。

安裝

1. 從背面鬆開兩枚螺絲，然後取下背蓋。
2. 拉出前面板與內部硬碟架。



3. 確定硬碟上的跳線設為 **Master**。
4. 安裝 3.5 吋 IDE 或 SATA 硬碟，並連接資料與電源線。然後請使用隨附的螺絲固定硬碟。



* 若製造商不同，請查閱硬碟隨附的說明書。



5. 裝回前面板。
外殼上的箭頭表示下前方向。



6. 重新裝回背蓋，並鎖緊兩枚螺絲。



接線

1. 現在請連接電源變壓器及網路線。



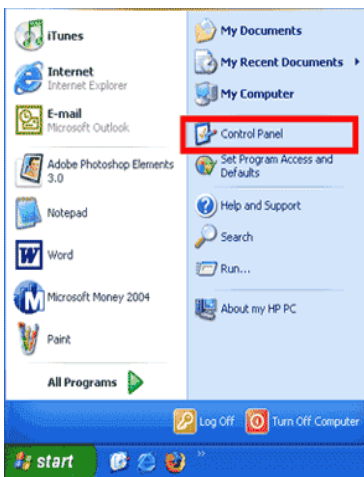
2. 將 FNS-1020 接上可連接網際網路的路由器。



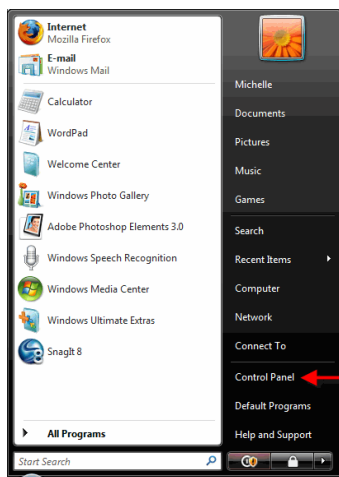
3. 安裝完成。現在即可開啓裝置電源並且進行設定。

檢查網路設定 (Windows XP / Vista)

1. 按一下開始按鈕，然後開啓控制台。



Windows XP



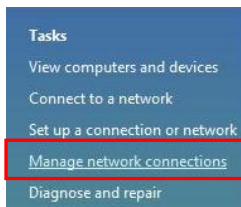
Windows Vista

2. 若您使用 Windows XP，請按一下 **[Network Connection]** (網路連線)

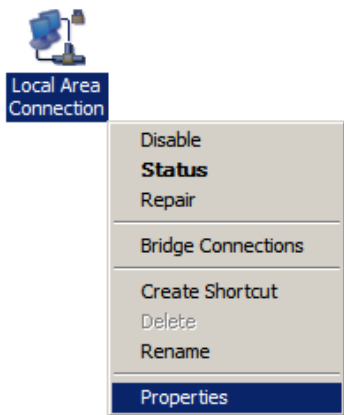


若您使用 Windows Vista，請按一下 **[View Network Status and Tasks]** (檢視網路狀態及工作)，然後再按一下

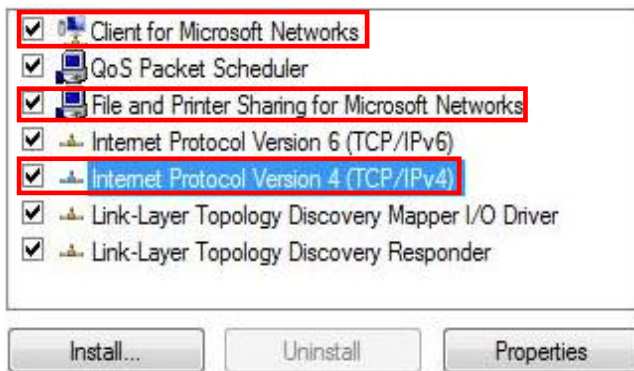
[Manage Network Connections] (管理網路連線)。



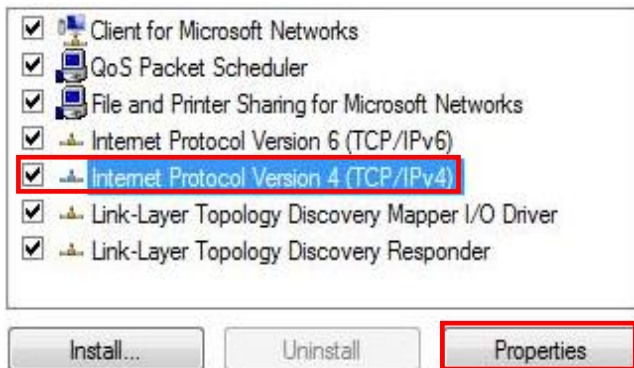
3. 在 [Local Area Connection] (區域連線) 上按滑鼠右鍵，然後選擇 [Properties] (內容)。



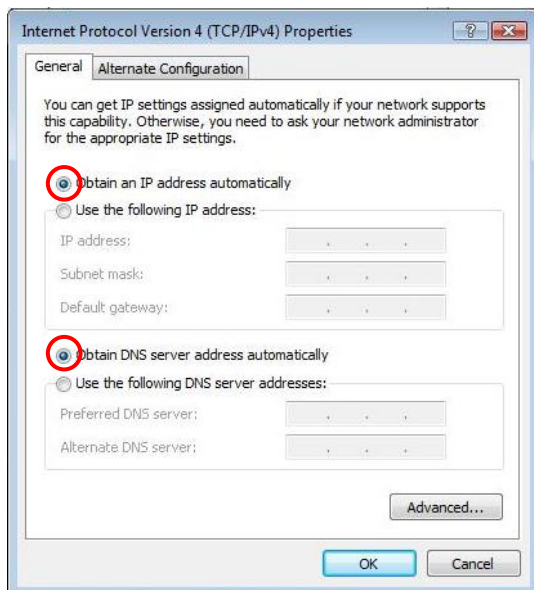
4. 檢查是否已點選 [Client for Microsoft Networks]、[File and Printer Sharing] 及 [Internet Protocol (TCP/IP)]。若無，請進行安裝。



5. 選取 [Internet Protocol (TCP/IP)] ，然後請按一下 [Properties] （內容）。

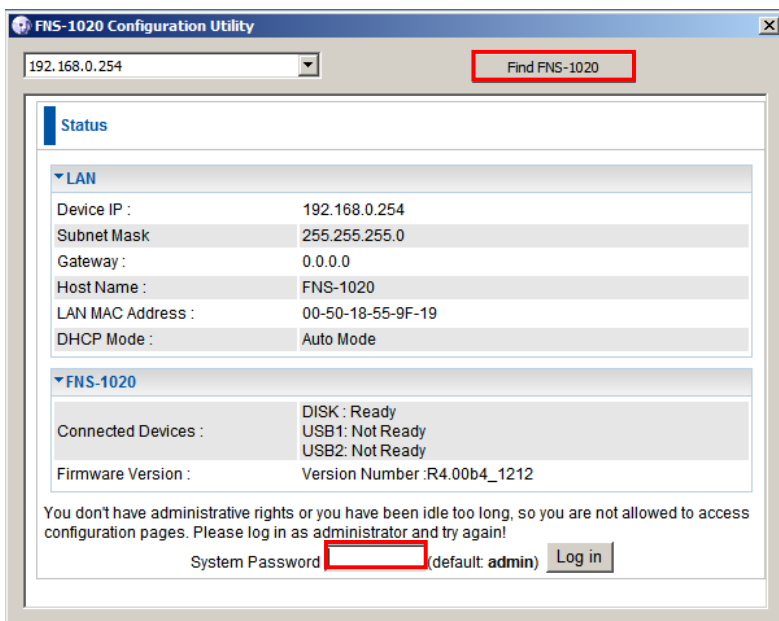


6. 選取這兩個選項，然後按一下 [OK] （確定）。



設定

1. 放入隨附的光碟，然後安裝 **Utility**（公用程式）。
2. 使用公用程式搜尋 **FNS-1020**。
3. 請輸入密碼（**admin**）。
4. 按一下 **Wizard**（**精靈**），進行網路設定與硬碟設定。



如需進行更詳細的設定，請參閱隨附光碟中的使用手冊。

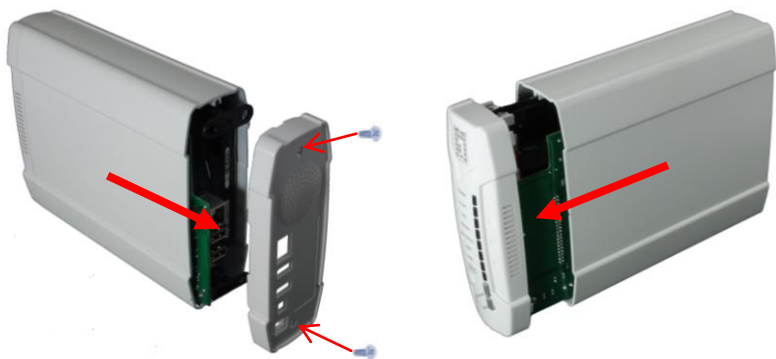
包装内容物

- FNS-1020 1-Bay 简易网络储存服务器
- 电源变压器 (12VDC, 4A)
- RJ-45 LAN 以太网网络线
- 桌面底座及橡胶脚垫
- 安装螺丝
- 手册 / 设定公用程序光盘
- 快速安装指南

若缺少上述任一项物品，请与您的零售商或经销商联络。

安装

1. 从背面松开两枚螺丝，然后取下背盖。
2. 拉出前面板与内部硬盘架。



3. 确定硬盘上的跳线设为 **Master**。
4. 安装 3.5 吋 IDE 或 SATA 硬盘，并连接数据与电源线。然后请使用随附的螺丝固定硬盘。



* 若制造商不同，请查阅硬盘随附的说明书。



5. 装回前面板。
外壳上的箭头表示下前方向。



6. 重新装回背盖，并锁紧两枚螺丝。



接线

1. 现在请连接电源变压器及网络线。



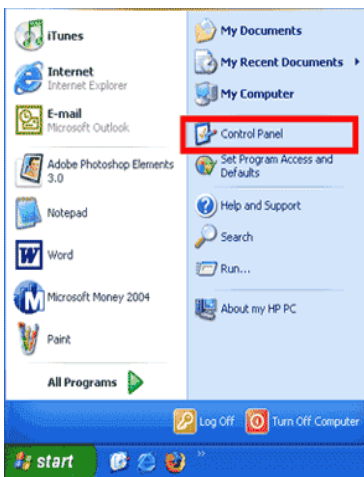
2. 将 FNS-1020 接上可连接因特网的路由器。



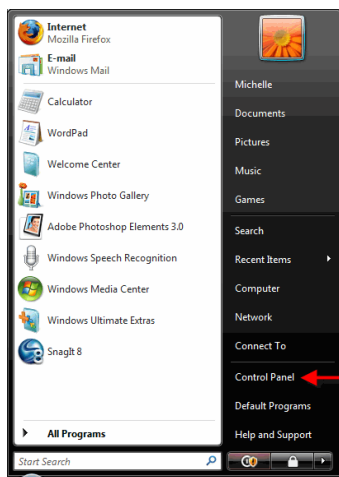
3. 安装完成。现在即可开启装置电源并且进行设定。

检查网络设定 (Windows XP / Vista)

1. 按一下开始按钮，然后开启控制台。



Windows XP



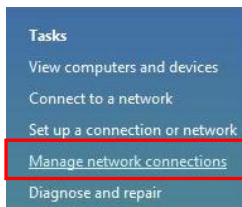
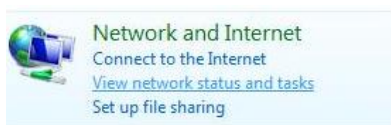
Windows Vista

2. 若您使用 Windows XP，请按一下 **[Network Connection]** (网络联机)

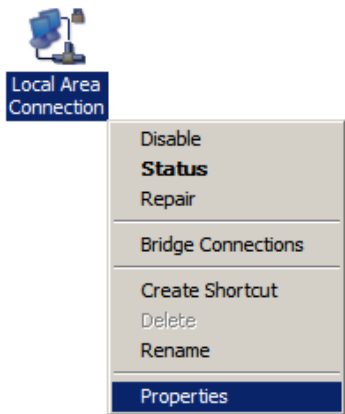


若您使用 Windows Vista，请按一下 **[View Network Status and Tasks]** (检视网络状态及工作)，然后再按一下

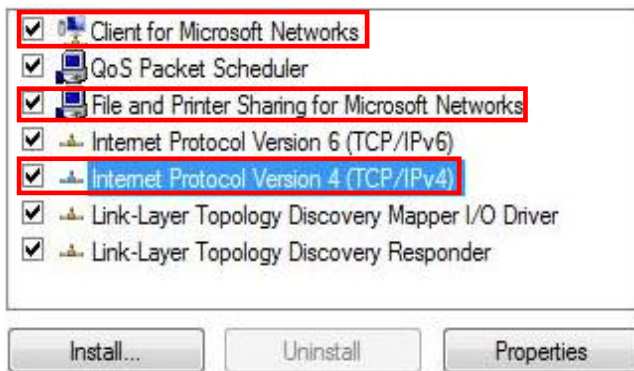
[Manage Network Connections] (管理网络联机)。



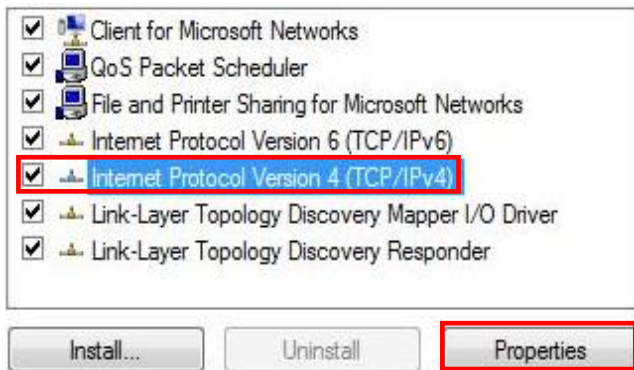
3. 在 [Local Area Connection] (区域联机) 上按鼠标右键，然后选择 [Properties] (内容)。



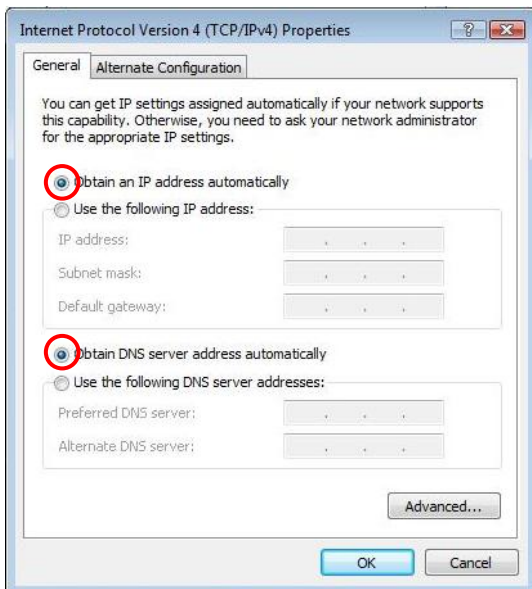
4. 检查是否已点选 [Client for Microsoft Networks]、[File and Printer Sharing] 及 [Internet Protocol (TCP/IP)]。若无，请进行安装。



5. 选取 **[Internet Protocol (TCP/IP)]**，然后
请按一下 **[Properties]**（内容）。

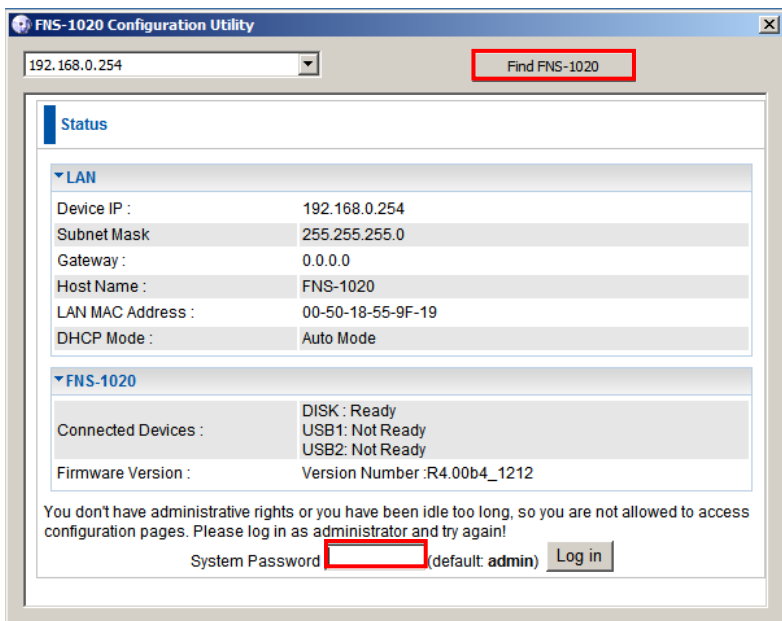


6. 选取这两个选项，然后按一下 **[OK]**（确定）。



设定

1. 放入随附的光盘，然后安装 **Utility**（公用程序）。
2. 使用公用程序搜寻 FNS-1020。
3. 请输入密码（**admin**）。
4. 按一下 **Wizard**（精灵），进行网络设定与硬盘设定。



如需进行更详细的设定，请参阅随附光盘中的使用手册。

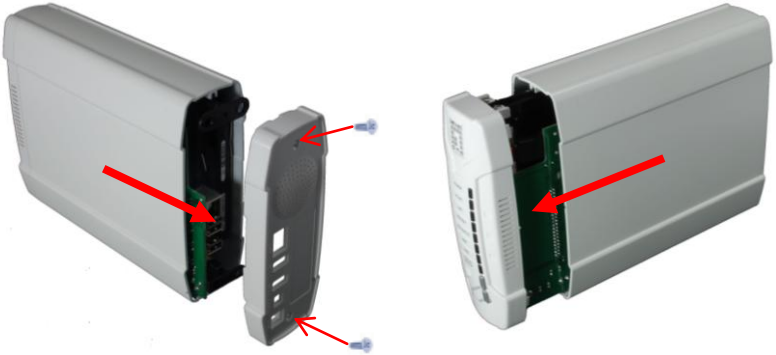
패키지 내용물

- FNS-1020 1-베이의 간편한 네트워크 스토리지
- 전원 어댑터(12VDC, 4A)
- RJ-45 LAN 이더넷 케이블
- 데스크톱 스탠드 및 고무 피트
- 설치용 나사
- 사용설명서와 구성 유틸리티가 들어 있는 CD-ROM
- 빠른 설치 설명서

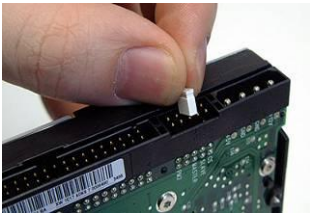
위의 내용물 중 누락된 항목이 있으면, 제품을 구입하신 판매점에 연락하십시오.

설치

1. 후면의 나사 2 개를 풀고 후면 패널을 제거합니다.
2. 전면 패널과 내부 트레이를 닫겨 꺼냅니다.



3. 하드 드라이브의 점퍼가 마스터로 설정되었는지 확인합니다.
4. 3.5 인치 IDE 또는 SATA 하드 드라이브를 설치하고 데이터 및 전원 케이블을 연결합니다. 그리고 나서 제공된 나사를 사용하여 하드 드라이브를 고정합니다.



* 하드 드라이브가 제조업체마다 다르기 때문에 하드 드라이브에 대한 설명서를 참조하십시오.



5. 전면 패널을 덮습니다.
케이스에 표시된 화살표가 전면 아래쪽을 가리켜야 합니다.



6. 다시 후면 커버를 맞춘 다음 2 개의 나사를 조입니다.



케이블 연결하기

1. 전원 어댑터와 네트워크 케이블을 연결합니다.



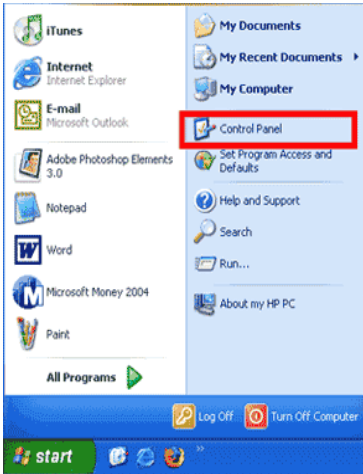
2. FNS-1020 를 인터넷 사용 가능 라우터에 연결합니다.



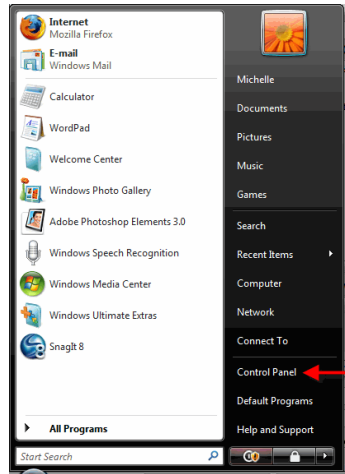
3. 설치가 완료되었습니다. 이제 장치의 전원을 켜고 설정을 구성할 수 있습니다.

네트워크 설정 확인(Windows XP / Vista)

1. 시작 버튼을 클릭하고 제어판을 엽니다.



Windows XP

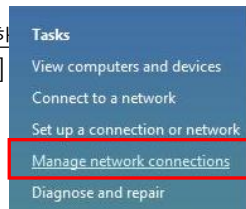
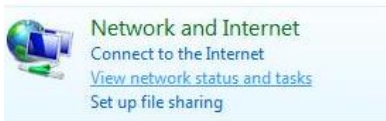


Windows Vista

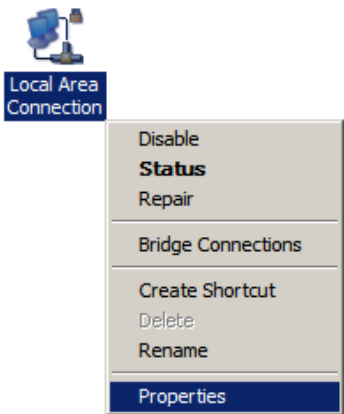
2. Windows XP 의 경우,
[**Network Connection**]
(네트워크 연결)을
클릭합니다.



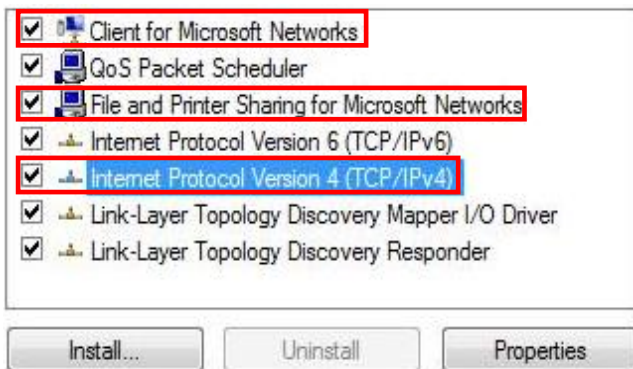
Windows Vista 의 경우,
[**View Network Status and Tasks**]
(네트워크 상태 및 작업 보기)를 클릭한
다음 [**Manage Network Connections**]
(네트워크 연결 관리)를 클릭합니다.



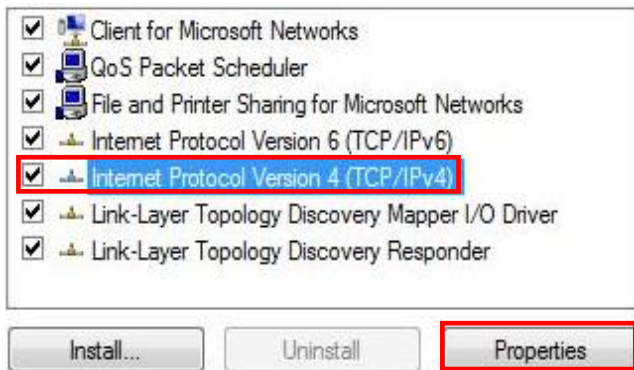
3. [Local Area Connection]
(로컬 영역 연결)을 마우스
오른쪽 버튼으로 클릭하고
[Properties] (속성)을
선택합니다.



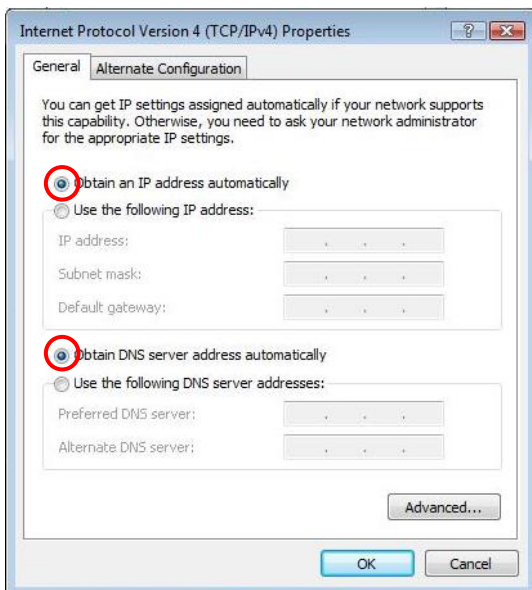
4. “Client for Microsoft Networks” (Microsoft 네트워크용 클라이언트), “File and Printer Sharing” (파일 및 프린터 공유), 그리고 “Internet Protocol (TCP/IP)” (인터넷 프로토콜(TCP/IP)) 가 선택되어 있는지 확인하고, 그렇지 않은 경우 이들을 설치합니다.



4. “Internet Protocol (TCP/IP)” (인터넷 프로토콜(TCP/IP)) 를 선택하고 [Properties] (속성)을 클릭합니다.

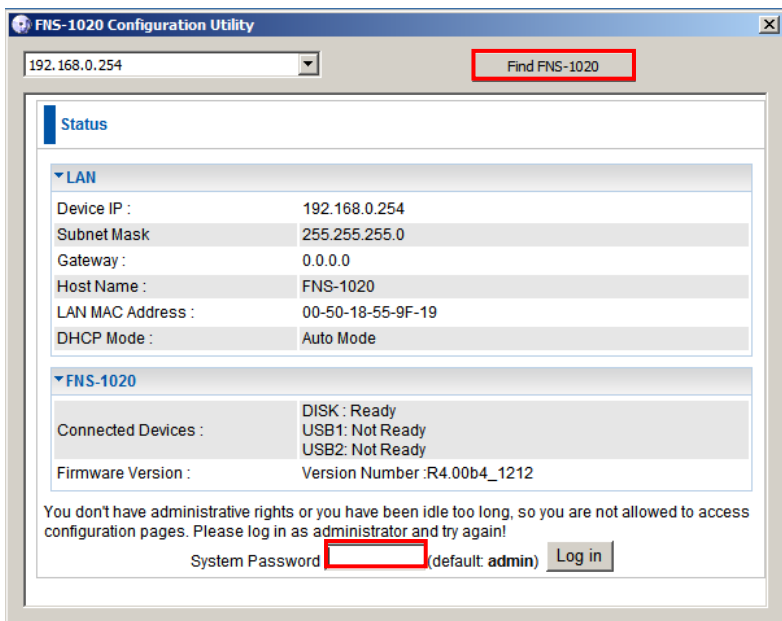


5. 2 개의 옵션을 선택한 다음 [OK] (확인)을 클릭합니다.



구성

1. 제공된 CD 를 넣고 **Utility (유틸리티)**를 설치합니다.
2. 유틸리티를 사용하여 FNS-1020 을 찾습니다.
3. 암호(**admin**)를 입력합니다.
4. **Wizard (마법사)**를 클릭하여 네트워크 설정 및 하드 드라이브 구성을 설정합니다.



자세한 내용은 제공된 CD 에 들어 있는 사용 설명서를 참조하십시오.

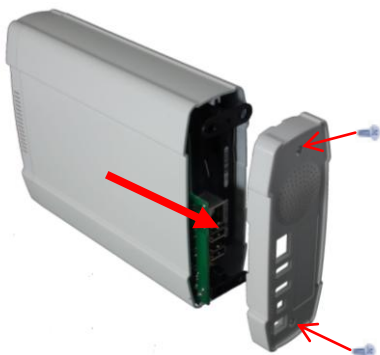
Комплект поставки

- Простое сетевое хранилище FNS-1020 с 1 отсеком
- Блок питания (12 В пост. тока, 4 А)
- Кабель ЛВС Ethernet RJ-45
- Настольная подставка и резиновые ножки
- Установочные винты
- Компакт-диск с руководством пользователя и программой настройки
- Краткое руководство по установке

Если какие либо из указанных предметов отсутствуют, обратитесь к продавцу прибора или дистрибьютору.

Установка

1. Отвинтите два винта на задней панели и снимите ее.
2. Извлеките переднюю панель с внутренним кронштейном.



3. Перемычку на жестком диске необходимо установить в положение «Master» (Ведущий).



* См. инструкции производителя по эксплуатации жесткого диска, поскольку они могут различаться.

4. Установите 3,5-дюймовый жесткий диск с интерфейсом IDE или SATA и подключите кабели данных и питания. Затем закрепите жесткий диск при помощи прилагающихся винтов.



5. Установите переднюю панель.
Стрелка на корпусе указывает переднюю часть нижней стороны.



6. Установите заднюю крышку и затяните два винта.

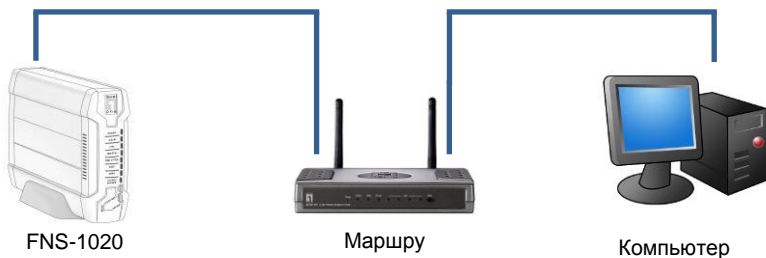


Подключение кабелей

1. Подключите блок питания и сетевой кабель.



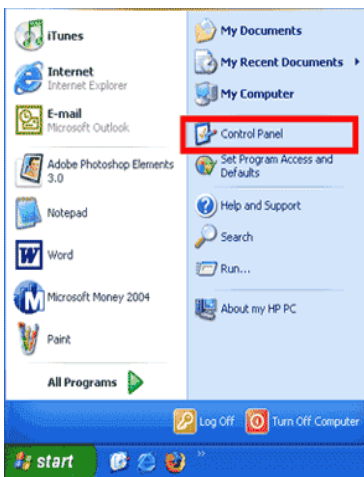
2. Подключите FNS-1020 к маршрутизатору, подключенному к Интернету.



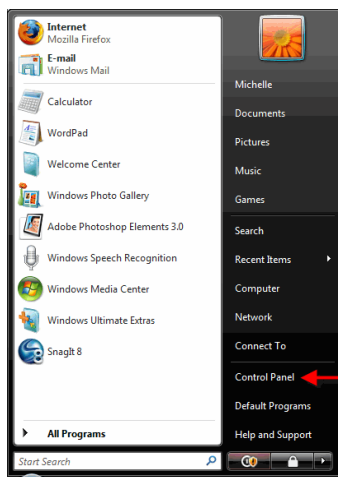
3. Процедура установки завершена. Теперь можно включить устройство и перейти к настройке параметров.

Проверьте настройки сети (Windows XP / Vista)

1. Нажмите кнопку «Пуск» и откройте Панель управления.



Windows XP

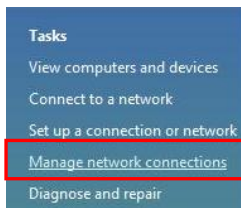
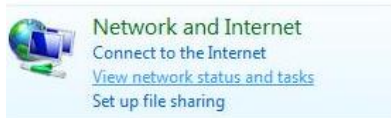


Windows Vista

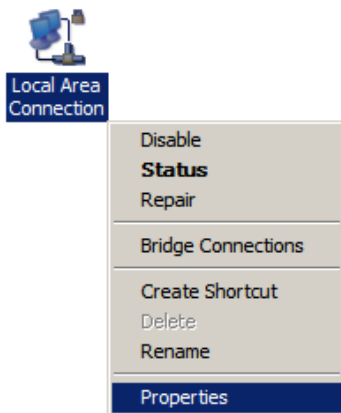
2. В ОС Windows XP нажмите **[Network Connection]** (Сетевые подключения)



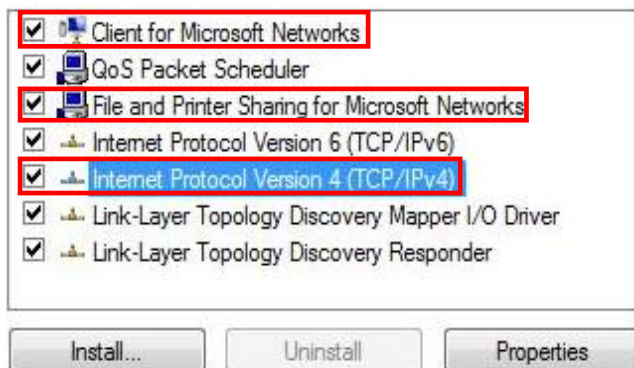
В ОС Windows Vista нажмите **[View Network Status and Tasks]** (Просмотр состояния сети и задачи),
затем нажмите **[Manage Network Connections]** (Управление сетевыми подключениями)



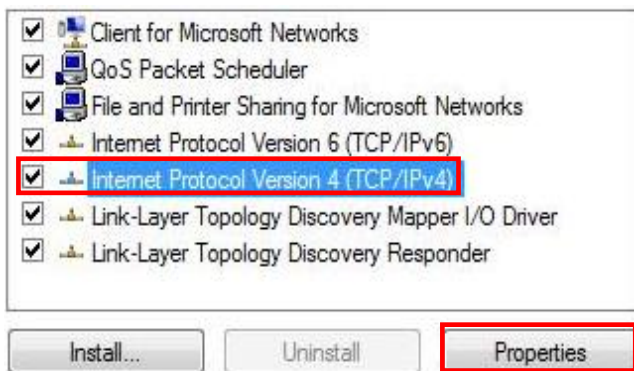
3. Щелкните правой кнопкой мыши значок [Local Area Connection] (Подключение по локальной сети) и выберите [Properties] (Свойства).



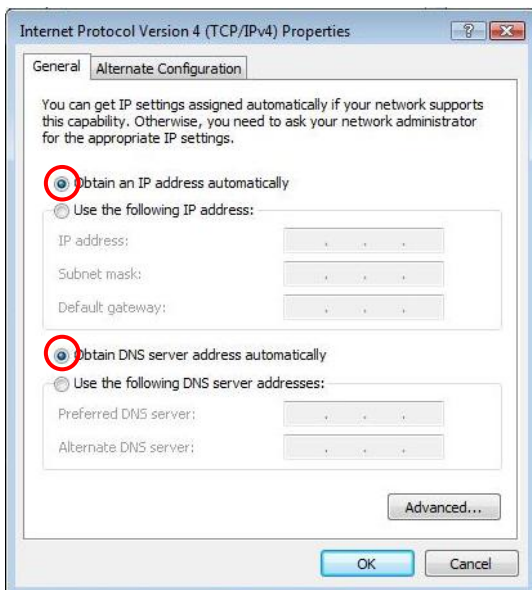
4. Убедитесь, что установлены флажки «Client for Microsoft Networks» (Клиент для сетей Microsoft), «File and Printer Sharing» (Служба доступа к файлам и принтерам сетей Microsoft), и «Internet Protocol (TCP/IP)» (Протокол Интернета (TCP/IP)). В противном случае установите их.



5. Выберите «**Internet Protocol (TCP/IP)**» (**Протокол Интернета (TCP/IP)**) и нажмите кнопку [**Properties**] (**Свойства**).

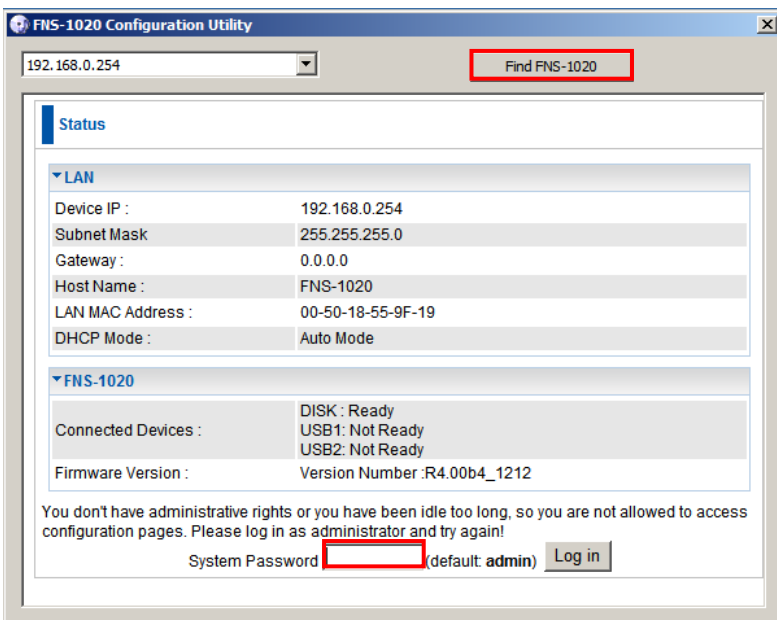


6. Выберите показанные ниже пункты и нажмите кнопку [**OK**].



Конфигурация

1. Поместите в дисковод входящий в комплект поставки компакт-диск и установите **Utility (служебную программу)**.
2. Используйте данную программу для поиска FNS-1020.
3. Введите пароль (**admin**).
4. Нажмите **«Wizard» (Мастер)** для настройки параметров сети и конфигурации жесткого диска.



Для получения более подробных сведений о настройке см. руководство пользователя, содержащееся на входящем в комплект поставки компакт-диске.