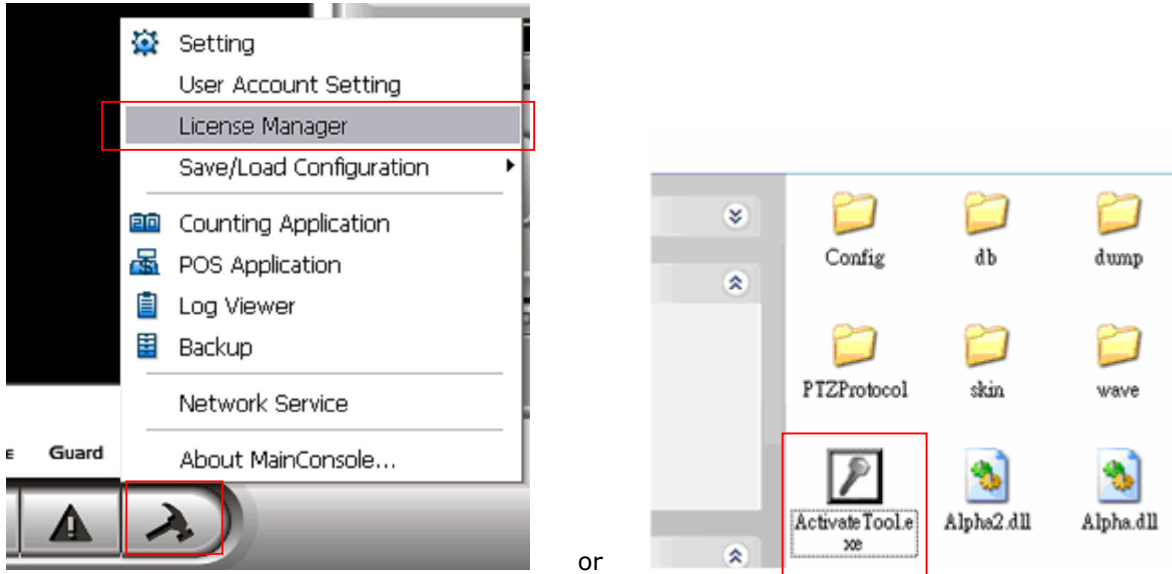


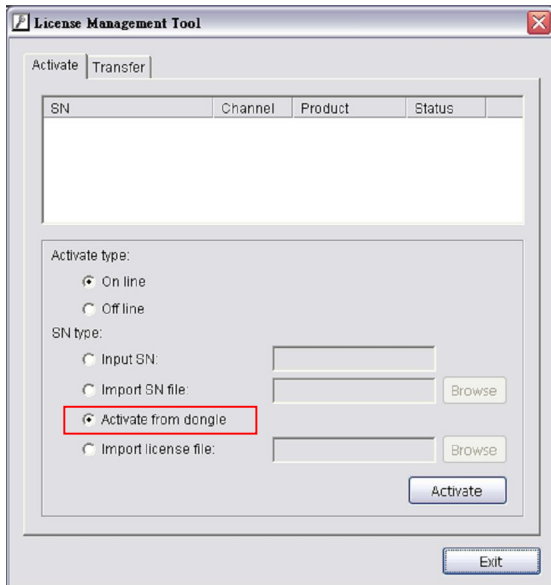
Start form IP CamSecure Pro v1.20 , the license verification type "active form USB dongle" will change to "input the SN" ,Please remember to change it when you running IP CamSecure Pro v1.20 or later version.

Notice: If not activate with new way, the IP CamSecure become a trail version for 30days.

Step 1: Execute "License Manager" Tool in configure menu or installation folders.

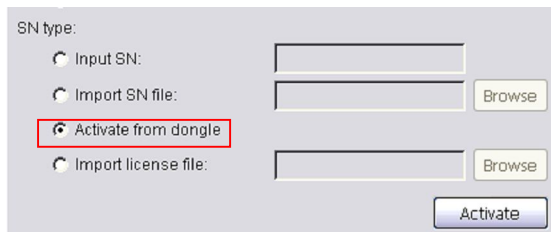


Step 2: The "License Management Tool" will appear.



Step 4: Select "On line" as Activate type.

Step 5: Select "Active from dongle" as SN type, and then click "Activate" button to activate.



Step 6: The System will auto restart MainConsole after Activated successfully.

Note: If success to activate the license from dongle, then dongle will no longer be valid again.

Note: the license code will bundle with PC's MAC address(recommend to use build-in Ethernet port), if want to change to another PC or Ethernet card, please open the "License Manager" , Select "SN", and then click "Transfer" button to transfer SN.