



LevelOne

User Manual

USB-0301

USB Fast Ethernet Adapter

ABOUT THIS MANUAL

This manual provides a beginner's introduction to installing, configuring and using the USB2.0 Ethernet Adapter. Information in this document has been carefully checked for accuracy; however, no guarantee is given to the correctness of the contents. The information in this document is subject to change without notice. The manufacturer makes no representations or warranties, either expressed or implied, with respect to the contents hereof and specifically disclaims any warranties, merchantability, or fitness for any particular purpose.

SAFETY INSTRUCTIONS

Always read the safety instructions carefully:

- Keep this User's Manual for future reference
- Keep this equipment away from humidity
- If any of the following situation arises, get the equipment checked by a service technician:
 - The equipment has been exposed to moisture.
 - The equipment has been dropped and damaged.
 - The equipment has obvious sign of breakage.
 - The equipment has not been working well or you cannot get it to work according to the User's Manual.

COPYRIGHT

This document contains proprietary information protected by copyright. All rights are reserved. No part of this publication or documentation accompanying this product may be reproduced in any form or by any means or used to make any derivative such as translation, transformation, or adaptation without permission of the manufacturer.

TRADEMARKS

All trademarks and registered trademarks are the property of their respective owners or companies.

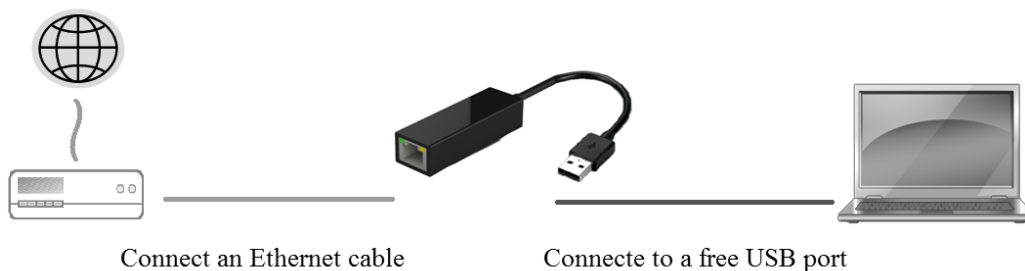
Table of Contents

1. Introduction	3
Features	3
System Requirements.....	4
Package Contents	4
2. Installation	5
On Windows Operating Systems	5
On Mac Operating Systems	8
Verifying the Driver Installation	8
on Windows® Operating Systems	8
on Mac® Operating Systems.....	9
4. Specifications.....	10
5. Regulatory Compliance	11
FCC Statement.....	11
CE	11
WEEE Information	11

1. Introduction

The USB2.0 Ethernet adapter design with small form factor, and simple plug-and-play Fast Ethernet network connection capability ,It is the easiest solution to enable your computer with network capability through an available USB 2.0 port without going through the hassles to install a network card. for desktops, notebook PC's, Ultra-Mobile PC's, docking stations ,digital-home appliances, and any embedded system using a standard USB port.

The USB2.0 Ethernet adapter implements a 10/100Mbps Ethernet LAN function based on IEEE802.3, and IEEE802.3u standards. The USB 2.0 Fast Ethernet Adapter is also compliant with USB Specification, Revision 2.0. It is fully compatible with a wide variety of Windows® operating systems



Features

- Compliant with USB 2.0 and USB 1.1 specifications
- IEEE 802.3 10BASE-T/100BASE-TX compatible
- IEEE 802.3 100BASE-FX compatible
- Supports IEEE 802.1Q VLAN tagging
- Supports IEEE 802.3az-2010 (EEE)
- Supports Crossover Detection & Auto-Correction
- Supports IPv4/ IPv6 packet Checksum Offload Engine(COE) to reduce CPU loading
- Supports full duplex operation with IEEE 802.3x flow control
- Support Wake-on-LAN Function via Link-change, Magic packet, MS wakeup frame
- Supports LPM (Link Power Management)

System Requirements

- One available USB port
- Windows® XP, Windows® 7, Windows® 8; Mac® OS X 10.5 and later

Package Contents

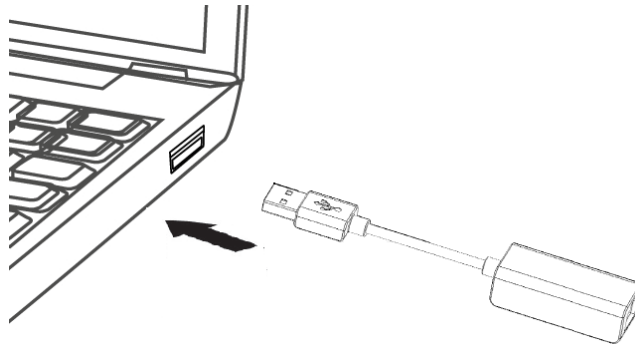
Before installation, please check the items of the package. The package should contain the following items:

- USB-0301
- User Manual

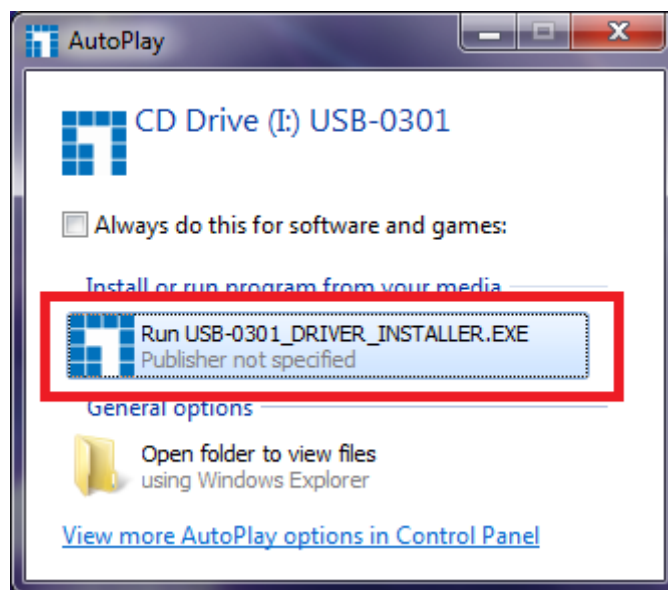
2. Installation

On Windows Operating Systems

Please **Connect the adapter first** and then follow the procedures below to install the driver



1. The installer program will run automatically when the adapter is connected, Please click on “ **Run Setup.EXE** ” to start the Driver install.

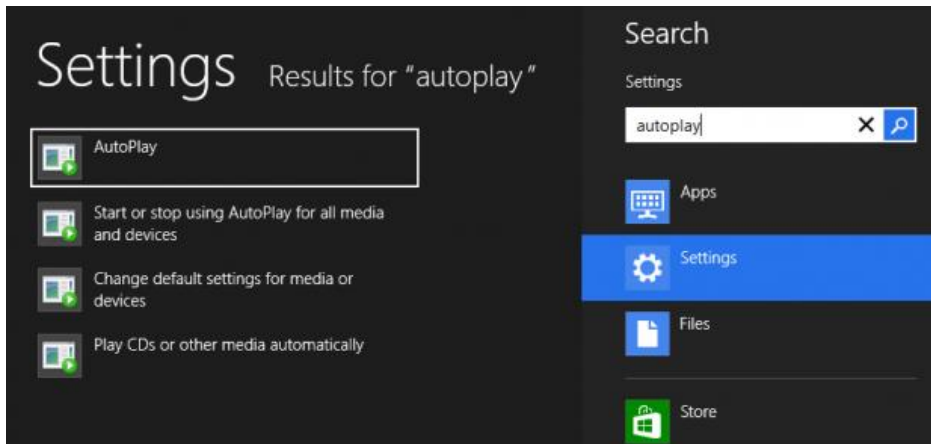


Notice :

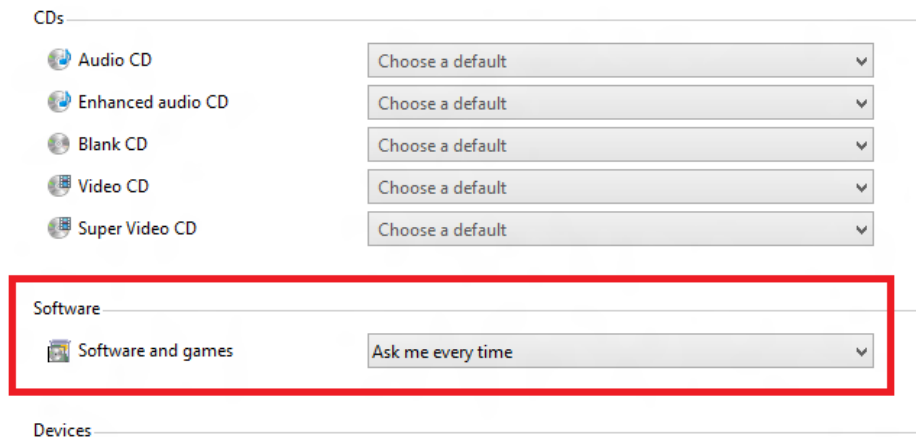
If the setup program didn't launch well , please check and change the autorun setting in your system by following steps :

For Windows 8 os :

- A. Open “Settings Search” by pressing **Windows + W** hotkey (if on a tablet, swipe from the right edge of your screen, tap “Search”, and tap “Settings”).
- B. Type “**autoplay**” and then choose “AutoPlay” from the results on the left.

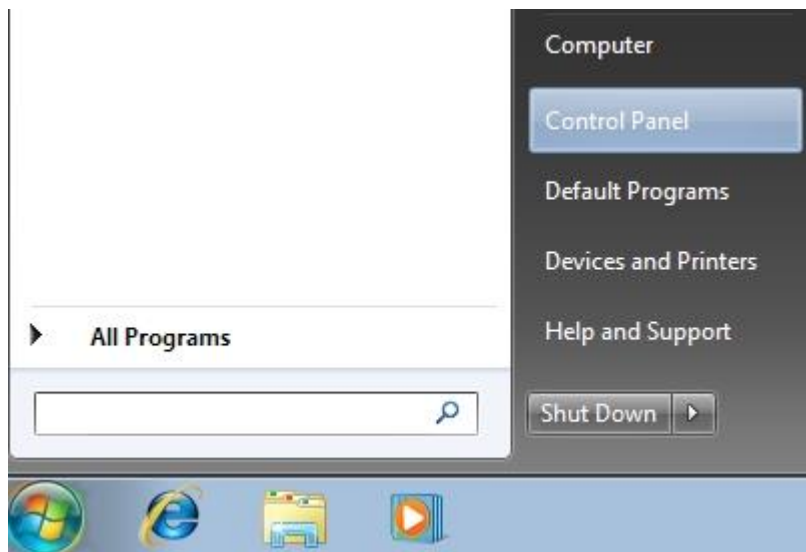


C. Scrolling down the screen , and select the **Software and games** item , then change the setting to “**Ask me every time**” , then click save to make the change effective .

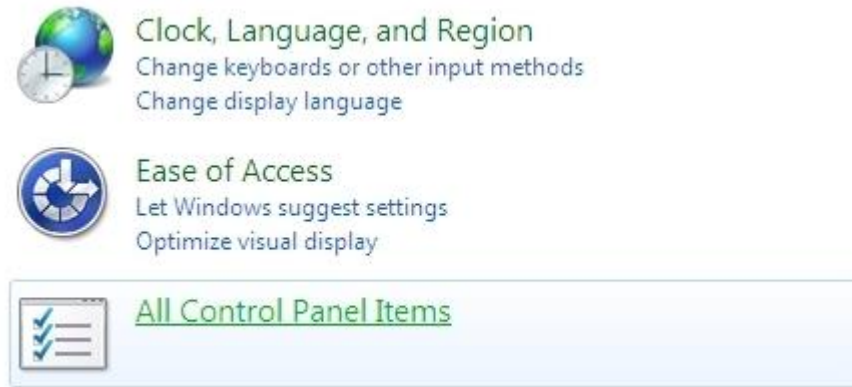


For Windows 7 os :

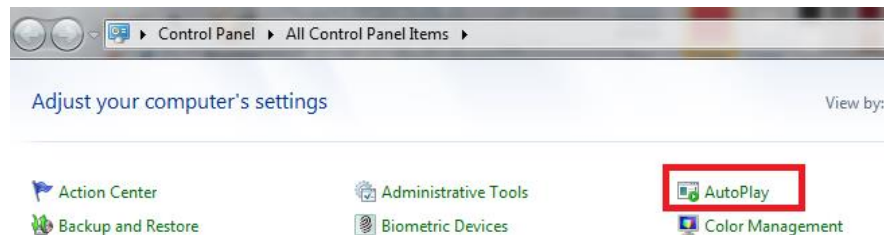
A. Click the Start button to view the Start Menu and then choose the Control Panel option.



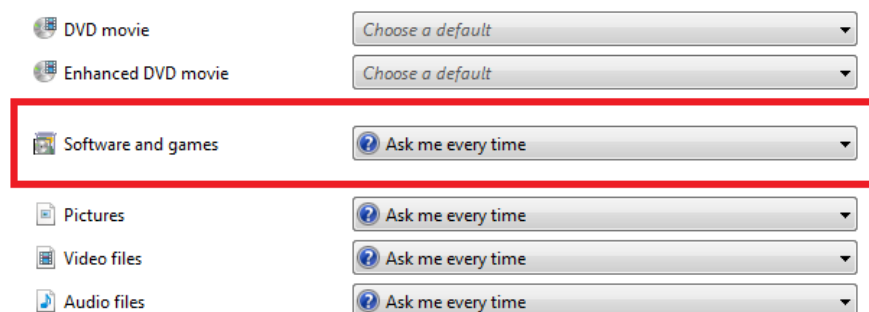
B. The Control Panel window opens up. Click on the All Control Panel Items.



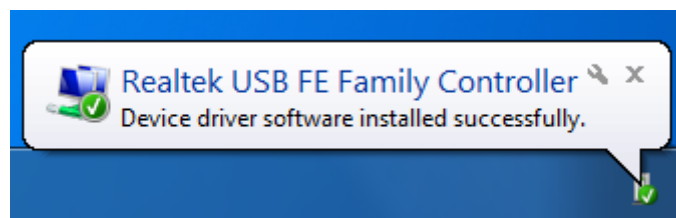
- C. Window shows all control panel items. Click on AutoPlay.



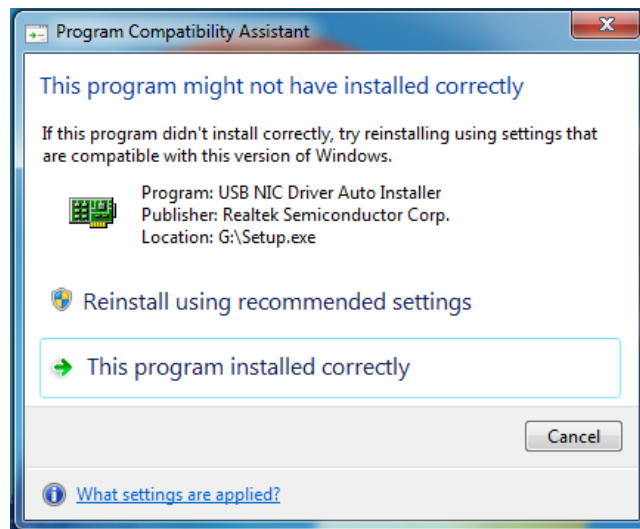
- D. Scrolling down the screen, and select the **Software and games** item, then change the setting to “**Ask me every time**”, then click save to make the change effective.



2. When the installation is done, a pop-up message will appear in the notification area indicating the installation is complete.



*Notice: you may encounter the Program Compatibility Assistant box will popup and prompt you to select , please select " **This Program Installed Correctly** " to complete the install.



On Mac Operating Systems

For Mac OS X, no additional driver installation is required. Simply plug the USB Ethernet adapter to the computer, the system will detect the new device and load the native driver and it's ready to use.

Now the installation is completed. You can connect the adapter to a network device by an Ethernet cable:

1. Connect an Ethernet cable to the Ethernet port on the adapter.
2. Connect the other end of the Ethernet cable to your network hub, switch or router.

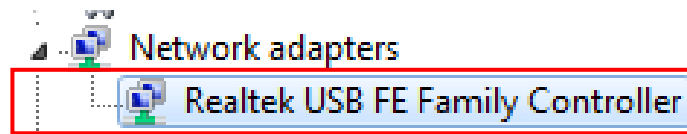
Verifying the Driver Installation

on Windows[®] Operating Systems

Once you finish the installation, you can open Windows[®] **Device Manager** to verify if your Ethernet Adapter is properly installed. To access the **Device Manager**:

- On Windows[®] **7**: Right-click **Computer** on the desktop and click **System Properties>Device Manager**
- On Windows[®] **XP**: Right-click **My Computer** on the desktop and click **Properties > (Hardware) > Device Manager**.

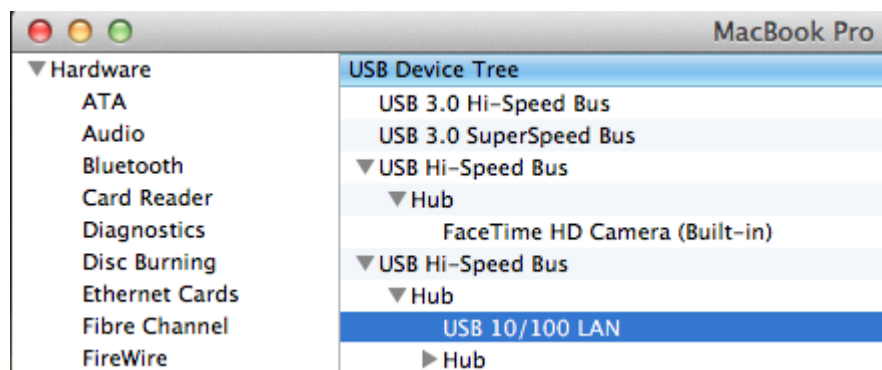
In the **Network adapters** group, an item named **Realtek USB FE Family Controller** should be displayed.



If there is a question or exclamation mark next to that item, then the driver is not properly installed. Please delete the item, select the **Delete the driver software for this device** option (if provided), unplug the adapter from your computer and then repeat the installation steps.

on Mac® Operating Systems

Plug USB Ethernet adapter onto the USB port of your Mac OSX system and add a new “USB Ethernet” network interface and then press the [Apply] button to take effect the new network interface.



4. Specifications

General	
Host Interface	USB 2.0 (1.1 compliant)
Operating System Support	<ul style="list-style-type: none"> ● Windows® XP, Windows® 7, Windows® 8 ● Mac® OS10.5 and later.
Ports and Connectors	
Upstream	1 x Upstream USB Standard Type A plug
Ethernet	1 x Ethernet Port (RJ-45 connector)
Power	
Power Mode	USB Bus -powered
Power Consumption	<ul style="list-style-type: none"> ● Operating Mode: 100 mA ● Suspend Mode : 1 mA
Physical Specifications	
Housing Material	ABS (Plastic)
Dimensions	<ul style="list-style-type: none"> ● Main body without cable: 50 mm (L) x 22 mm(W)x 14.7 mm (H) ● Main body without cable: 168 mm (L) x 22 mm(W)x 14.7 mm (H)
Weight	Approximately 36 g (including cable)
Environmental Specifications	
Operating Temperature	10-40°C
Storage Temperature	-10~80°C
Relative Humidity	< 85% non-condensing
Regulatory Compliances	
Safety, EMI	FCC, CE
RoHS	RoHS compliant

* Specification is subject to change without further notice.

5. Regulatory Compliance

FCC Statement

This device complies with Part 15 of the FCC Rules. Operation is subject to the following two conditions:

- (1) This device may not cause harmful interference, and
- (2) this device must accept any interference received, including interference that may cause undesired operation.

FCC Caution:

Any changes or modifications not expressly approved by the party responsible for compliance could void the user's authority to operate this equipment.

CE

This device complies with the following regulations:

EN 55 022: CLASS B

WEEE Information

For EU (European Union) member users:

According to the WEEE (Waste electrical and electronic equipment) Directive, do not dispose of this product as household waste or commercial waste. Waste electrical and electronic equipment should be appropriately collected and recycled as required by practices established for your country. For information on recycling of this product, please contact your local authorities, your household waste disposal service or the shop where you purchased the product.

