



PLI-4052
500Mbps Powerline Adapter
User Manual

V1.0_20170628

Table of Contents

Chapter 1 Introduction.....	2
1.1 Features	2
1.2 Security Warning.....	2
1.3 Package Contents	3
1.4 Environment.....	3
Chapter 2 External Component Description	4
2.1 Front Panel	4
2.2 Physical Interface	5
Chapter 3 Hardware Installation.....	6
3.1 Hardware Installation - Computer.....	6
3.2 Hardware Installation - Internet.....	7

Chapter 1 Introduction

Congratulations on your purchase of this outstanding Powerline Adapter. The device is 500Mbps Powerline Adapter, it turns you existing powerline into a high speed network with no need for wire or drilling. No configuration required, simply plug you adapters into you power sockets and you can establish infrastructure in a flash. With a speed of up to 500Mbps, it is a great choice for an easy to build multimedia entertainment network.

1.1 Features

- Data transfer rate up to 500Mbps over electrical wires, ideal for HD video streaming
- No new wires or drilling required, just using existing electrical wires
- Up to 300 meters range over the household power circuit for better performance through wall or across floors
- Power-Saving Mode automatically reduces power consumption by up to 85%
- LED indicators for monitoring Power, PLC, Ethernet

1.2 Security Warning

- Your Powerline Adapter should be placed in a safe and secure location. To ensure proper operation, please keep the unit away from water and other damaging elements. Please read user manual thoroughly before you install the device.
- Please follow all warnings and instructions marked on the product.
- Please do not try to open or repair the device yourself, it may expose you to dangerous high voltage and other risks.
- Do not place the device in a damp or humid location, i.e. a bathroom.
- Do not operation this product near water.
- Do not obstruct this product ventilation slots, as insufficient airflow may harm this product.
- The device should be placed in a sheltered and non-slip location within a temperature range of 0 to +40 Celsius degree.
- This product should never be placed near or over a radiator, or a heat register.
- Since the 500Mbps Powerline Adapter product sends data over the Powerline, it is recommended that you plug directly into wall socket (100V ~ 240V AC). Do not use an extension cord between this product and the AC power source.
- This product relies on the building's electrical installation for short-circuit (over current) protection.
- For pluggable equipment, the socket-outlet shall be installed near the equipment and shall be easily accessible.
- Unplug from the wall socket before cleaning. Use a damp cloth for cleaning. Do not use liquid cleaners or aerosol cleaners.

1.3 Package Contents

Please make sure you have the following in the box, if anything is missing, please contact your vendor.

- 500Mbps Powerline Adapter
- User Manual
- RJ-45 Network Cable
- Warranty Card

1.4 Environment




- Operating Temperature: 0°C~40°C
- Storage Temperature: -10°C~70°C
- Operating Humidity: 10%~90% non-condensing
- Storage humidity: 5%~90% non-condensing

Chapter 2 External Component Description

2.1 Front Panel

The front panel provides LED's for device status. Refer to the following table for the meaning of each feature.



LED	Color	Status	Indication
 Power LED	Green	On	Power is on.
		Blinking	System is in the process of password synchronization.
		Off	Power is off.
 Powerline LED	Red	Blinking	The device is transferring data.
	Green	On	The device is connected to a Powerline network.
Off		The device has not found any other compatible Powerline devices using the same encryption key.	
 Ethernet LED	Green	On	The Ethernet port is connected, but there is no data being transferred.
		Blinking	The Ethernet Port is transferring data.
		Off	The Ethernet port isn't connected.

2.2 Physical Interface

There are three physical interfaces on this Powerline Adapter.

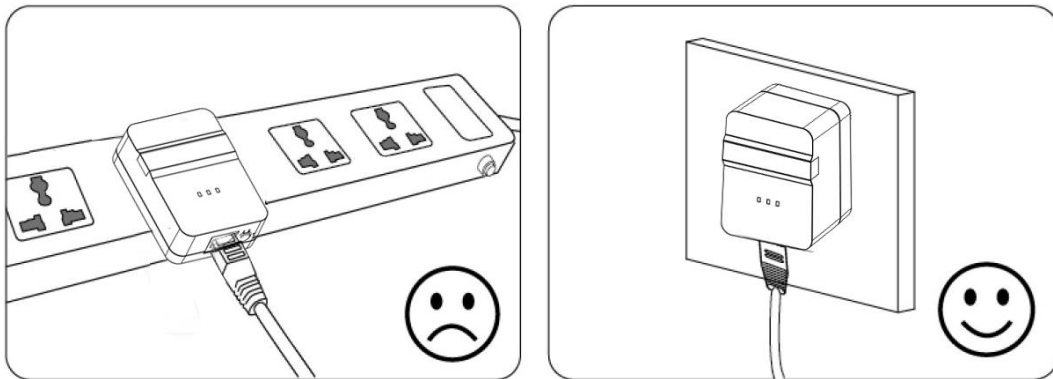


Interface	Description
Power Plug	A Power Plug for connecting the adapter to a 100V~240V AC power socket.
Ethernet Port	A 10/100Mbps Ethernet port for connecting the adapter to the PC or the broadband device with a network cable.
Pair Button	<p><i>Security:</i> Pair buttons are used to secure a powerline network. To secure your network, please follow the steps below. Firstly, plug in a new adapter, and press its pair button for 1 second; then plug in another adapter and press its pair button for 1 second as well. The two buttons should be pressed within 2 minutes of each other. After that, these two adapters will be finished connecting after a few minutes later.</p> <p><i>Reset:</i> Press the button for 5 seconds, then release to return the Powerline adapter to its factory default settings.</p>

Chapter 3 Hardware Installation

To ensure the optimum performance of the Powerline Adapter and significantly improve the transmission of the network, we recommend that you comply with the following connection rule:

Plug the Powerline Adapter directly into a wall socket but not the multiple sockets.



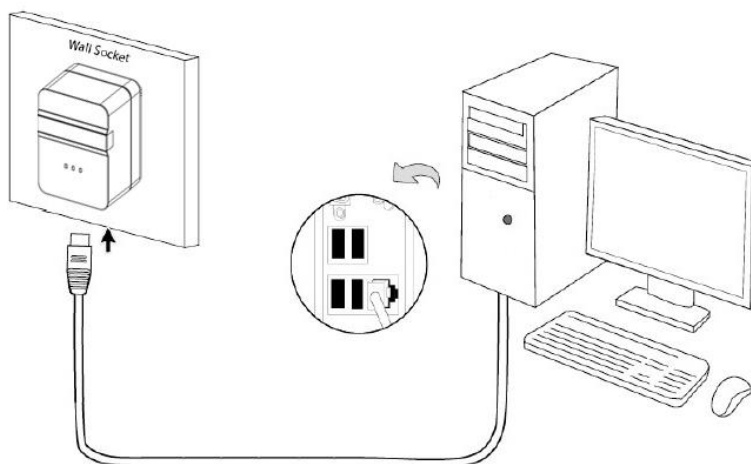
3.1 Hardware Installation - Computer

For those computers you wish to be networked by Powerline Adapter, each of the computers must be properly connected with a Powerline Adapter through an Ethernet (RJ-45) cable.

Following are the steps to properly connect the Powerline Adapter to your computer:

1. Use the supplied Category 5 Ethernet cable to connect Powerline Adatper and your PC's Ethernet port.
2. Plug the Powerline Adapter to power outlet.
3. The Power LED indicator will light on after plugging.

The hardware connection mechanism is show below:



3.2 Hardware Installation - Internet

This section describes how to connect the Powerline Adapter into your existing ADSL broadband connection via ADSL Ethernet port.

Follow the procedures described below to connect the Powerline Adapter to your ADSL broadband connection:

1. Connect the provided Ethernet (RJ-45) cable to the Powerline Adapter's Ethernet port.
2. Connect the other end of the Ethernet (RJ-45) cable to an available Ethernet port of your ADSL broadband Router.
3. Plug the Powerline Adapter into a wall socket next to the computer.
4. Turn on your computer.
5. For the first connection, press the Powerline Adapter's pair button for 1 second, then plug in another adapter and press its pair button for 1 seconds as well. The two buttons should be pressed within 2 minutes of each other. After that, these two adapters will be finished connecting after a few minutes later.
6. Check and confirm that the Power LED, Powerline LED(Green) and Ethernet LED on the Powerline Adapter are ON.
7. The Ethernet LED and Powerline LED(Red) indicator starts blinking when the data communication proceeds on Ethernet.

The hardware connection mechanism is shown below:

