



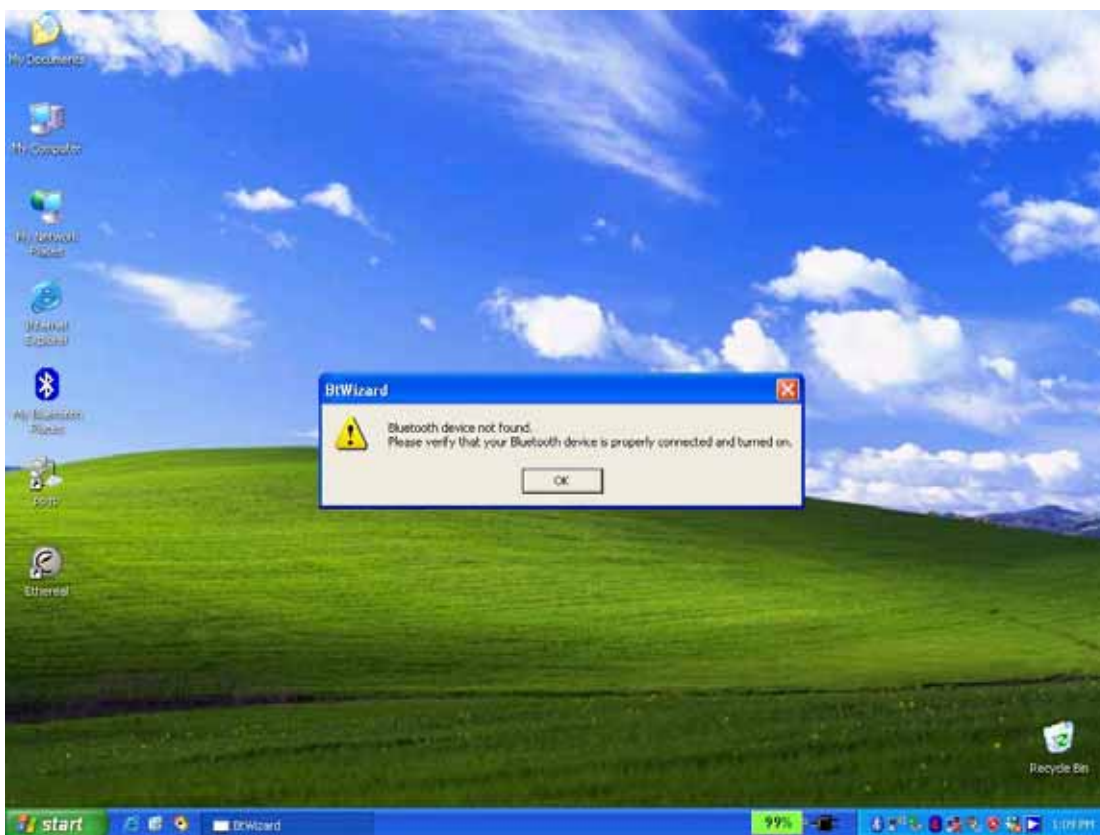
Tech Note

Digital Data Communications Asia Co., Ltd.
8F, No. 41, Lane 221, Gang-Chi Rd, Nei-Hu Dis., 114, Taipei, Taiwan
[Http://www.digital-data.net](http://www.digital-data.net) ; [Http://www.level1.com](http://www.level1.com)



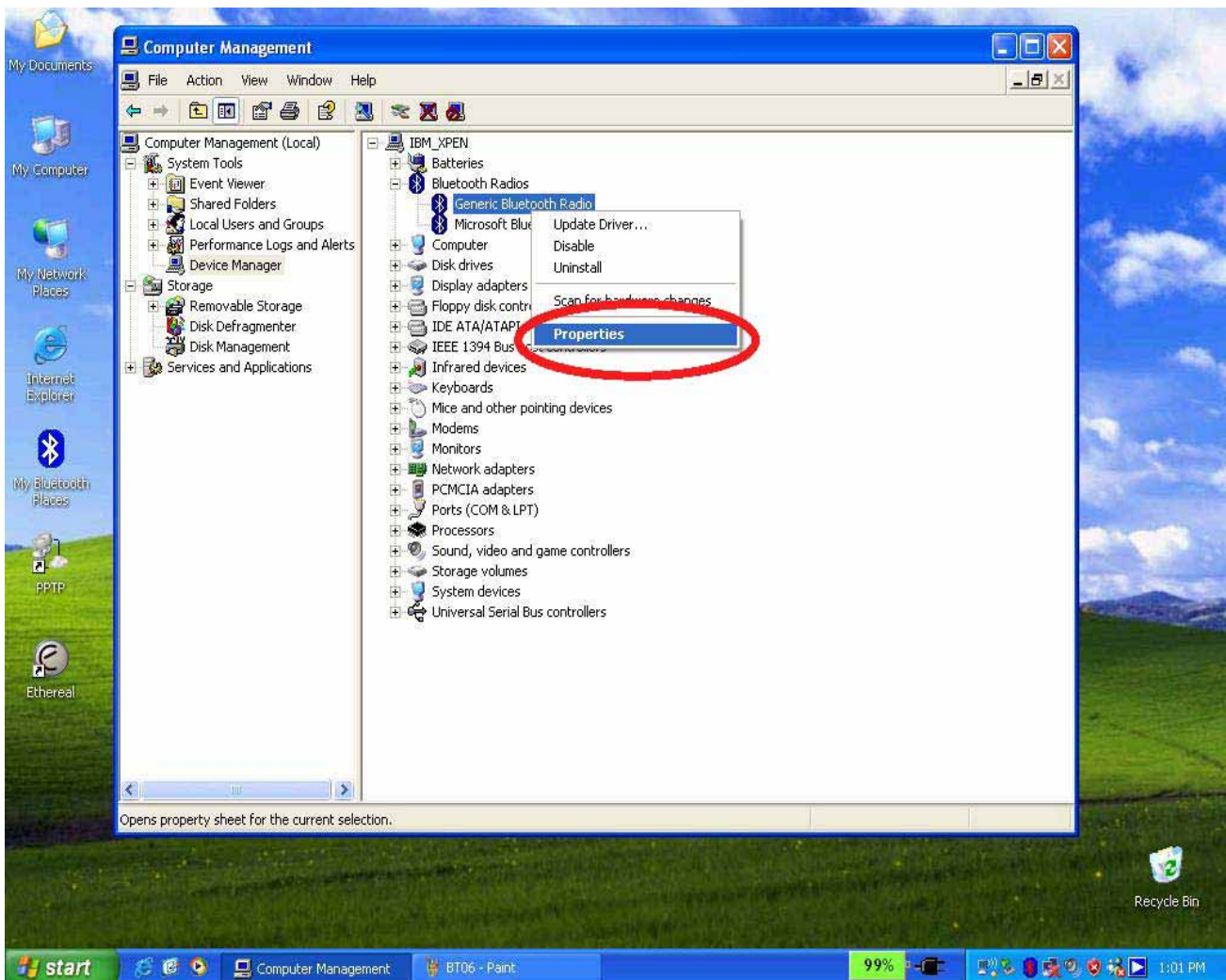
Subject: How to use your LevelOne Bluetooth Dongle with WidComm software in Windows XP SP2??

Problem: I can not use Widcomm software as below picture after upgrade Windows XP to SP2.

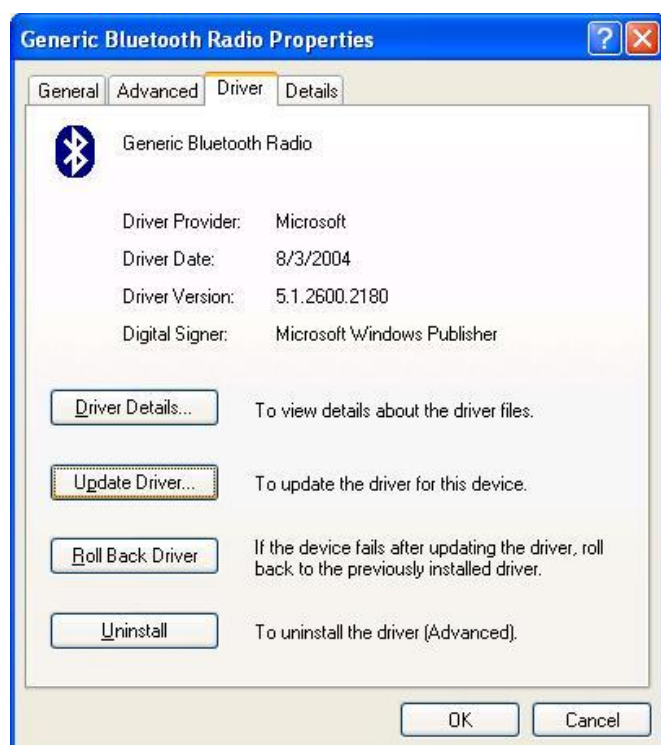


How:

1. Please go to “Device Manager”.
2. Select “Properties” of Bluetooth Radios-Generic Bluetooth Radio as below picture.



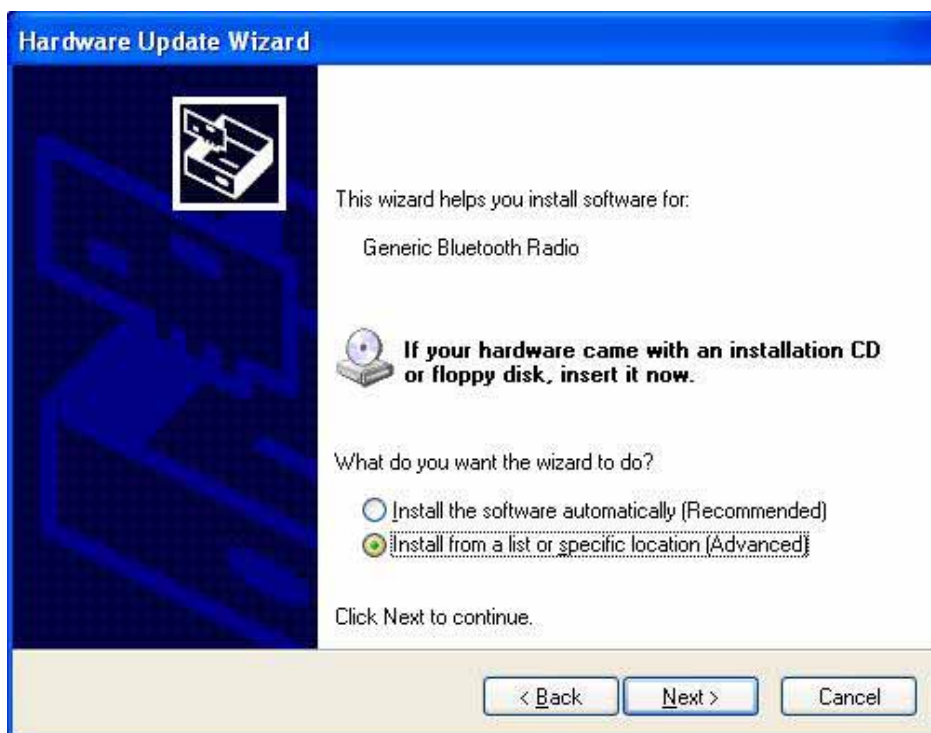
3. Select “Update Driver” Button.



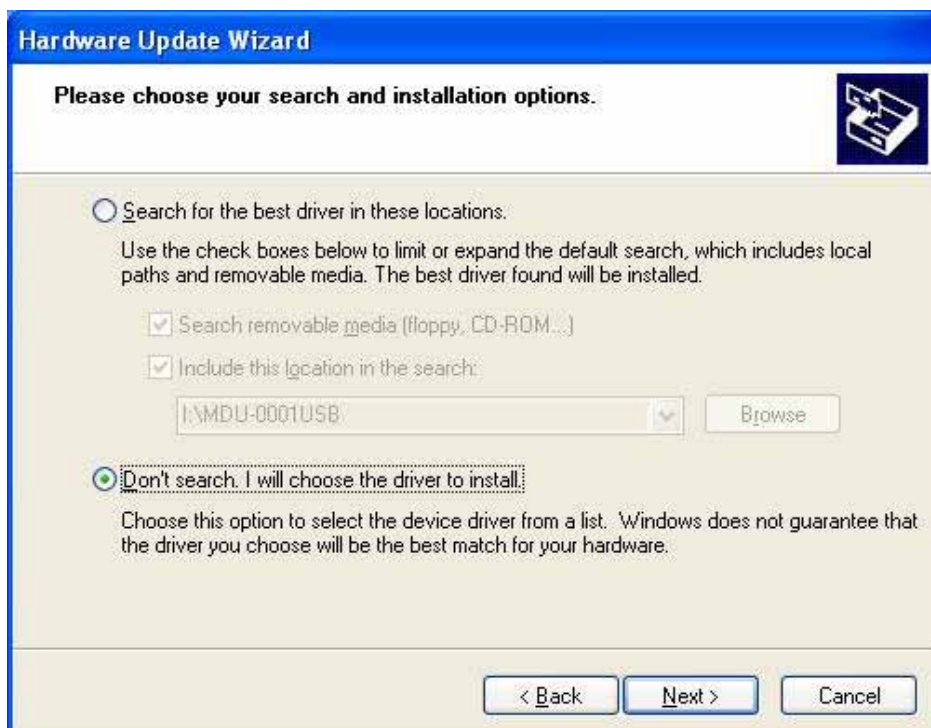
4. Please select “No, not this time”, then click “Next” button.



5. Select "Install from a list specific location(Advanced)" then click "Next" button.

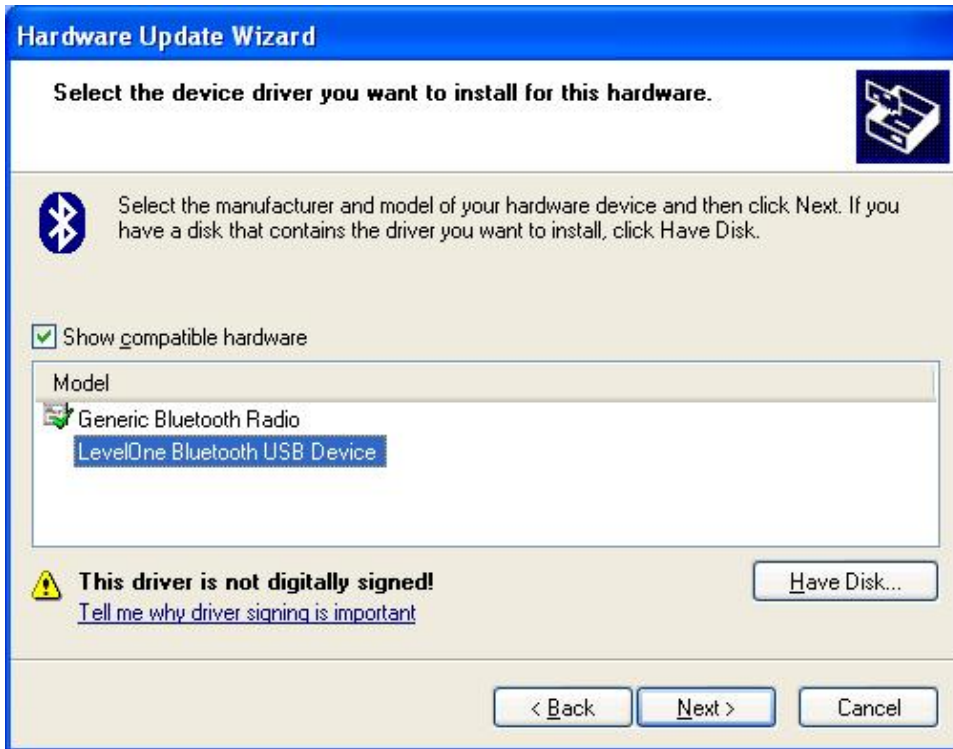


6. Select "Don't search, I will choose the driver to install." then click the "Next" Button.



7. Select “LevelOne Bluetooth USB Device” then click “Next” button.

(MDU-0001v4 and MDU-0005v2 will show “CSR Bluetooth device” in this selection”)



8. Click “Finish” button then you can start using Widcomm software.

