



LevelOne

GSW-2420

24-Port Gigabit Switch

User Manual

Version 1.0-0602

FCC Certifications



This Equipment has been tested and found to comply with the limits for a Class A digital device, pursuant to part 15 of the FCC Rules. These limits are designed to provide reasonable protection against harmful interference when the equipment is operated in a commercial environment. This equipment generates, uses, and can radiate radio frequency energy and, if not installed and used in accordance with the instruction manual, may cause harmful interference to radio communications.

Operation of this equipment in a residential area is likely to cause harmful interference in which case the user will be required to correct the interference at his own expense.

This device complies with Part 15 of the FCC Rules. Operation is subject to the following two conditions: (1) this device may not cause harmful interference, and (2) this device must accept any interference received; including interference that may cause undesired operation.

CE Mark Warning



This equipment complies with the requirements relating to electromagnetic compatibility, EN 55022 class A for ITE, the essential protection requirement of Council Directive 89/336/EEC on the approximation of the laws of the Member States relating to electromagnetic compatibility.

Company has an on-going policy of upgrading its products and it may be possible that information in this document is not up-to-date. Please check with your local distributors for the latest information. No part of this document can be copied or reproduced in any form without written consent from the company.

Trademarks:

All trade names and trademarks are the properties of their respective companies.

Copyright © 2006, All Rights Reserved.



Unpacking Information

Thank you for purchasing **GSW-2420 Gigabit Switch**. Before installation, please verify that your package contains the following items.

1. **One GSW-2420 24-Port Gigabit Switch**
2. **One AC power cord**
3. **Rack-mount brackets**
4. **Stackable kit**
5. **Manual CD**

Introduction

General Description

Easily boost your networking throughput, this product provides you 24 Gigabit ports that lead you to a real Gigabit connection. Users are now able to transfer large and high bandwidth-needed files faster and hence get a real efficiency improvement.

This product offers users with fast and reliable network. The store-and-forward architecture filters errors and forwards packets in a non-blocking environment. Flow control ensures the correctness of data transmitting. The 802.3x and backpressure flow control mechanisms work respectively for full and half duplex modes.

The switch features with easy installation and maintenance. It supports Nway auto-negotiation protocol that detects the networking speed (10/100/1000 Mbps) and the duplex modes (Full/Half) automatically. Auto-MDI/MDI-X function alleviates the effort to use crossover cables. Also, rich diagnostic LEDs are provided for users to get real-time information of the connection status.

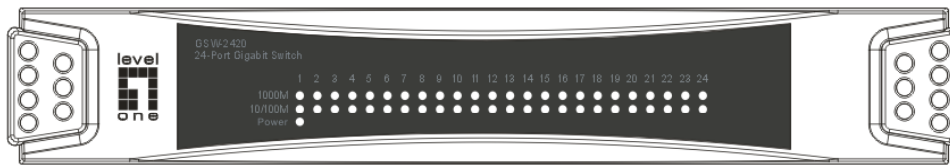
Key Features

- Complies with 10BASE-T specifications of the IEEE802.3 standard
- Complies with 100BASE-TX specifications of the IEEE802.3u standard
- Complies with 1000BASE-T specifications of the IEEE802.3ab standard
- 24 * 10/100/1000Mbps RJ-45 Nway ports
- Supports NWay protocol for speed (10/100/1000Mbps) and duplex mode (Half/Full) auto-detection
- Supports MDI/MDI-X auto crossover
- Supports full and half duplex operation on all ports
- Supports back-pressure (half duplex) and flow control (IEEE 802.3x)
- Wire-speed packet filtering and forwarding rate
- Store-and-forward architecture filters fragment & CRC error packets
- Supports 8K MAC address entries in whole system
- 500KBytes buffer memory
- Support 9K bytes Jumbo Frames
- Supports extensive LED indicators for network diagnostics

- Internal power adapter
- FCC,VCCI,CE Class A, Meet RoHS

The Front Panel

The front panel consists of LED indicators . For detailed LED definition, please refer to the next paragraph.



LEDs Definition

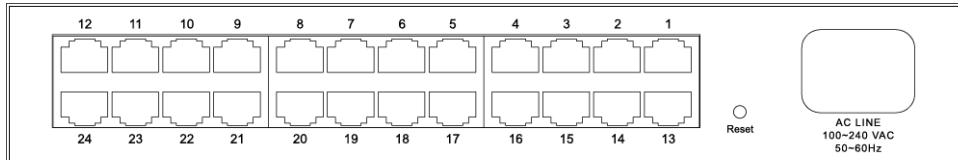
System LED

LED	Status	Operation
Power	Steady Green	The switch is powered on
	Off	The switch is powered off

Port LEDs

LED	Status	Operation
1000M	Steady Green	Valid port connection at 1000 Mbps
	Blinking Green	Valid port connection and there is data transmitting/ receiving
	Off	Port disconnected or the port is connected at 10 Mbps or 100 Mbps
10/ 100M	Steady Green	Valid port connection at 10/ 100 Mbps
	Blinking Green	Valid port connection and there is data transmitting/ receiving
	Off	Port disconnected or the port is connected at 1000 Mbps

The Rear Panel



Power Receptacle

To be compatible with the electric service standards around the world, the switch is designed to afford the power supply in the range from 100 to 240VAC, 50/60Hz. Please make sure that your outlet standard to be within this range.

To power on the switch, plug the female end of the power cord firmly into the receptacle of the switch and the other end into an electric service outlet. After the power cord installation, please check if the power LED is illuminated for a normal power status.

Installation

This switch can be placed on your desktop directly, or mounted in a rack. The installation is a snap. Users can use all the features of the switch with simply attaching the cables and turning the power on.

Before installing the switch, we strongly recommend:

1. The switch is placed with appropriate ventilation environment. A minimum 25mm space around the unit is recommended.
2. The switch and the relevant components are away from sources of electrical noise such as radios, transmitters and broadband amplifiers
3. The switch is away from environments beyond recommend moisture

Desktop Installation

1. Attach the provided robber feet to the bottom of the switch to keep the switch from slipping. The recommend position has been square-marked.
2. Install the switch on a level surface that can support the weight of the unit and the relevant components.
3. Plug the switch with the female end of the provided power cord and plug the male end to the power outlet.

Rack-mount Installation

Rack mounting facilitate to an orderly installation when series of networking devices being installed. The switch is supplied with rack mounting brackets and screws for rack mounting the unit.

Procedures to Rack-Mount the Switch in the rack:

1. Disconnect all the cables from the switch before continuing.
2. Place the unit the right way up on a hard, flat surface with the front facing you.
3. Locate a mounting bracket over the mounting holes on one side of the unit.
4. Insert the screws and fully tighten with a suitable screwdriver.
5. Repeat the two previous steps for the other side of the unit.
6. Insert the unit into the rack and secure with suitable screws (optional).
7. Reconnect all the cables.

Network Cables Installation

1. **Crossover or straight-through cable:** All the ports on the switch support Auto-MDI/MDI-X functionality. Both straight-through or crossover cables can be used to connect the switch with PCs as well as other devices like switches, hubs or router.
2. **Category 3,4,5 or 5e UTP/STP cable:** To make a valid connection and obtain the optimal performance. Appropriate cables corresponding to different transmitting/receiving speed is required. To choose a suitable cable, please refer to the following table.

Media	Speed	Wiring
10/100/1000Mbps copper	10Mbps	Category 3,4,5 Utp/STP
	100Mbps	Category 5 UTP/STP
	1000Mbps	Category 5,5e UTP/STP

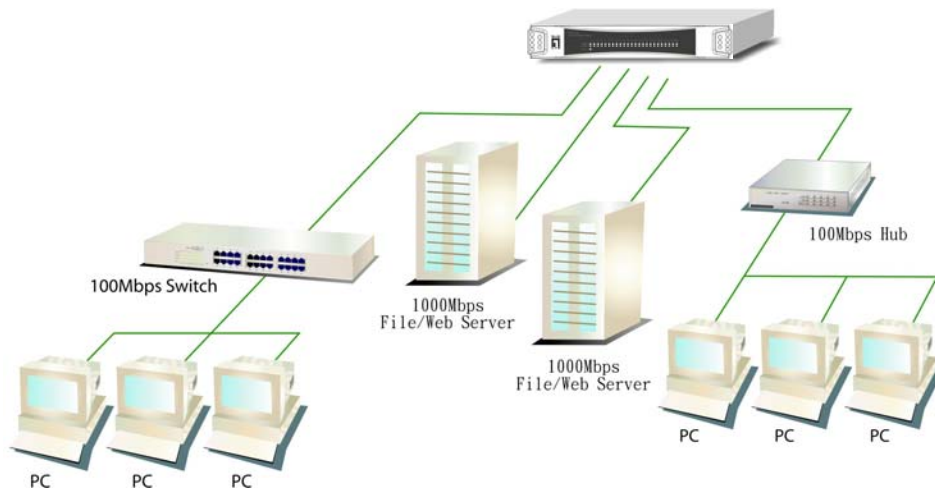
Port Operation

The auto-negotiation feature allows ports running at one of the following operation modes:

Media	Speed	Duplex Mode
10/100/1000Mbps(copper)	10Mbps	Full Duplex
		Half Duplex
	100Mbps	Full Duplex
		Half Duplex
	1000Mbps	Full Duplex

Backbone Network Application

This switch is ideal for boosting the throughput of backbone. For an application sample of network topology, please refer to the following chart.



Product Specifications

Standard	IEEE802.3 10BASE-T IEEE802.3u 100BASE-TX IEEE802.3x full-duplex flow control IEEE802.3ab 1000BASE-T
Interface	24*10/100/1000 Mbps auto MDI/MDI-X RJ-45 switching ports
Cable Connections	RJ-45 (10BASE-T): Category 3,4,5 UTP/STP RJ-45 (100BASE-TX): Category 5 UTP/STP RJ-45 (1000BASE-T): Category 5,5e or enhanced UTP/STP
Transmission Mode	10/100Mbps Full-duplex, Half-duplex 1000Mbps Full-duplex
LED indications	Power 24* 10/ 100M: Link/ACT 24* 1000M: Link/ACT
Memory	8K MAC entries 500K bytes Buffer Memory
Emission	FCC, CE, VCCI
Operating Temperature	0 ^o ~ 40 ^o C (32 ^o ~ 104 ^o F)
Operating Humidity	10% - 90%(non-condensing)
Power Supply	Internal power supply 100-240V/50-60 Hz universal input