



5/8 -Port w/ 1 Port PD Fast Ethernet Switch

User's Manual

FCC Warning

This device has been tested and found to comply with limits for a Class A digital device, pursuant to Part 15 of FCC Rules. These limits are designed to provide reasonable protection against harmful interference when the equipment is operated in a commercial environment. This equipment generates and radiates radio frequency energy and, if not installed and used in accordance with the user's manual, it may cause interference in which case users will be required to correct interference at their own expenses.

CE Warning

This is a Class A product. In a domestic environment, this product may cause radio interference in which case the user may be required to take adequate measures.

Introduction

This switch provides 5/8 ports 10/100M. It was designed for easy installation and high performance in an environment where traffic is on the network and the number of users increases continuously.

It builds Power Device (PD) feature on its port 5/8 and by using this port, it can get power source from other PSE ports through Cat. 5 cable

The small compact palm size was specifically designed for small to medium workgroups. It can be installed where space is limited; moreover, it provides smooth network migration and easy upgrade to network capacity.

Package Contents

Before you start to install this switch, please verify your package that contains the following items:

- One 5/8 port PoE Fast Ethernet Switch
- One User's Manual

Note: If any of these items is found missing or damaged, please contact your local supplier for replacement.

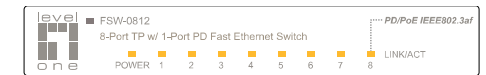
Key Features

- 5/8 Port 10/100M Switch (Auto-negotiation)
- Port 5/8 builds in IEEE 802.3af Power Device (PD) feature getting power source from other PSE ports
- Palm size with metal case
- Auto-learn of networking configurations
- Auto-detect full/half-duplex modes for any port
- Dedicated full-duplex 200Mbps bandwidth
- Store-and-Forward switching methods
- IEEE 802.3x flow control for full-duplex and back-pressure flow control for half-duplex
- Non-blocking & Non-head-of-line blocking full wire speed forwarding
- Auto-MDI/MDI-X function for any port
- Smart plug & play

Front Panel (LEDs)

LED Indicators of 5/8 Port with 1 Port PoE 10/100M Switch

LED	Status	Description
Power	On	Power is on.
	Off	Power is off.
LINK/ACT	On	Port is for connection.
	Off	No connection.
	Flashing	Data is transmitting or receiving



8 port switch

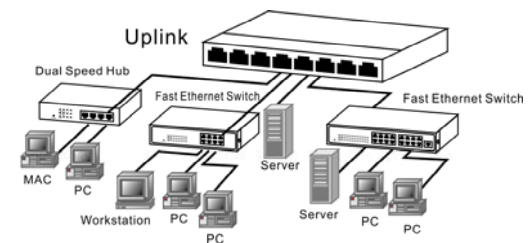


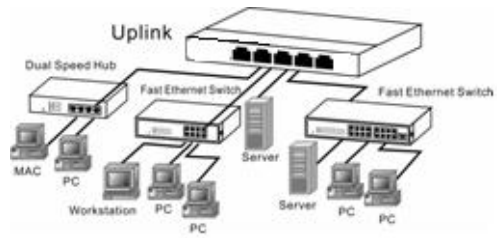
5 port switch

Rear Panel (Connections)

Switch/Hub to this 5/8 Port with 1 Port PoE Fast Ethernet Switch

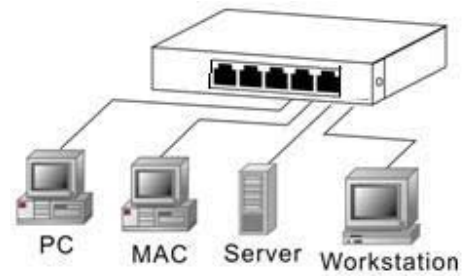
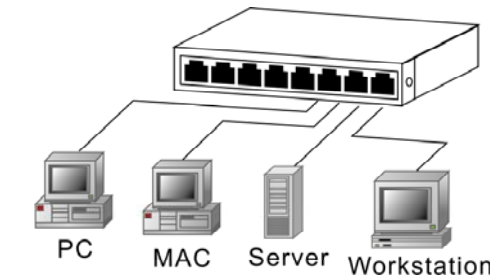
This switch provides automatic crossover detection functionality for any port. It is simple and friendly to up-link to another switch without crossover cable.





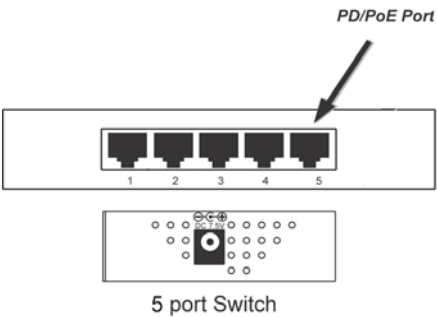
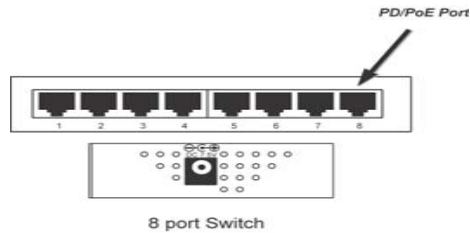
PC/Other devices to this 5/8 Port with 1 Port PoE Fast Ethernet Switch

Via a twisted pair cable straight through, this switch can be connected to PCs, servers and other network devices.



Power

Power is supplied through an external DC power adapter.



Technical Specifications

Standards	IEEE 802.3af IEEE 802.3 10 BaseT IEEE 802.3u 100BaseTX IEEE 802.3x Flow control
Features	Number of Ports: 5/8 10/100BaseT(X) with 1 PD/PoE Port MAC Address: 2K Buffer Memory: 1M bits Method: Store and Forward
Filtering/Forwarding Rates	100Mbps port – 148,800pps 10Mbps – 14,880pps
Transmission Media	10BaseT Cat. 3, 4, 5 UTP/STP 100BaseTX Cat. 5 UTP/STP
LED Indicators	Per Port: LINK/ACT Per Unit: Power
Power Supply	DC 7.5V/0.8A
Power Consumption	6 Watts (Max)
Dimensions	130 x 77 x 24 mm (L x W x H)
Weight	0.35 kg
Operating Temperature	0 to 55°C
Storage Temperature	-20 to 90°C
Humidity	10 to 90% RH (non-condensing)
Certifications	FCC Class A, CE