

# **LevelOne FCS-1010**

*P/T IP Camera*

## **Quick Installation Guide**



### **System Requirements**

- ◆ Windows 98, 98SE, Millennium Edition (ME), 2000 and XP operating systems
- ◆ PC with Pentium III 800MHz system or above is recommended
- ◆ Memory Size:128MB (256 is recommended)

#### **NOTE:**

**All the captured images of installation mentioned in this user's manual were based on Windows XP operating system. For installation on other Windows OS, e.g. Windows 98SE, all the procedures remains the same.**

**1**

## **LevelOne FCS-1010 Hardware Installation.**

Connect the Ethernet Cable..

Connect an Ethernet cable to the Ethernet connector located on the back panel of FCS-1010. And attach it to the network



Please use a cross-over Ethernet cable if you connect this camera directly to a PC.

## Attach the External Power Supply

Attach the external power supply to the DC power input connector. And connect it to an AC power outlet.



## Attach the AV cable(optional).

Connect the AV cable only if you wish to connect FCS-1010 to a TV set.

Attach the AV cable to the AV out connector .



Attach the yellow RCA connector to the "Video" connector on your TV.

Attach the white RCA connector to the "Audio" connector on your TV.



## 2

# Configuring your FCS-1010 with IP Installer

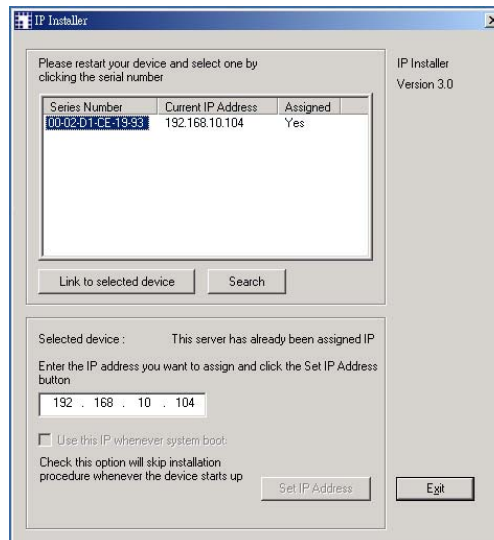
Insert the FCS-1010 CD into the CD-ROM drive.

Click on "IP Installer".

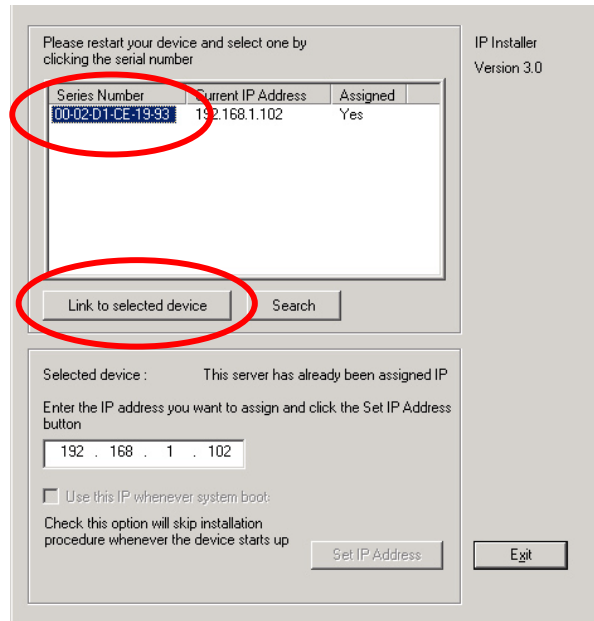


IP Installer screen shall show up.

The IP Installer will show a **MAC address** and an **IP Address** of available FCS-1010.



Highlight the MAC address and click "Link to selected device".



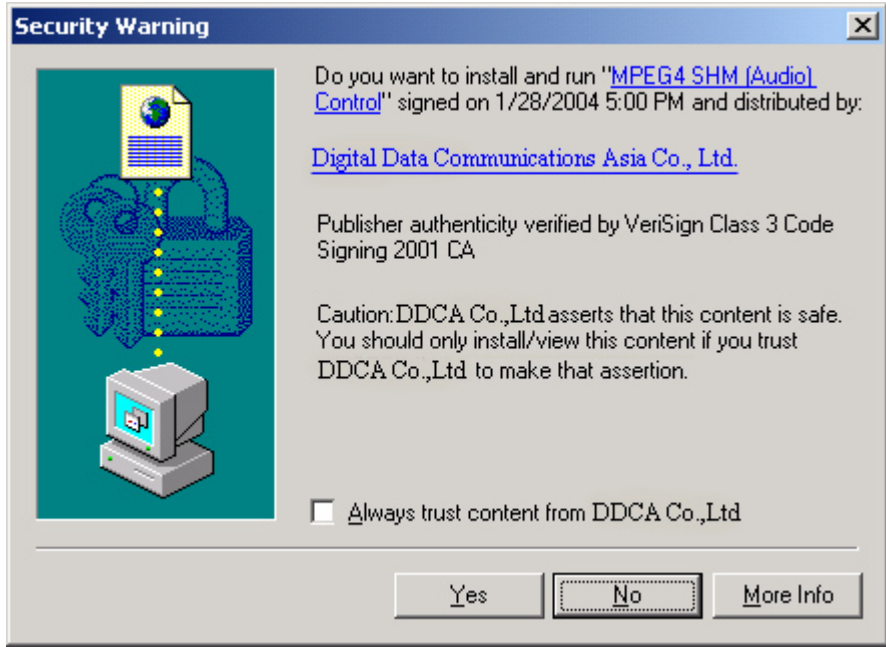
After successful linkage, the authentication window should pop up. **The default user name is "root".** **The default password is the MAC address** of your own FCS-1010, which marks at the bottom label of each device. Please enter the MAC address in capital letters.



3

### Viewing Your LevelOne FCS-1010

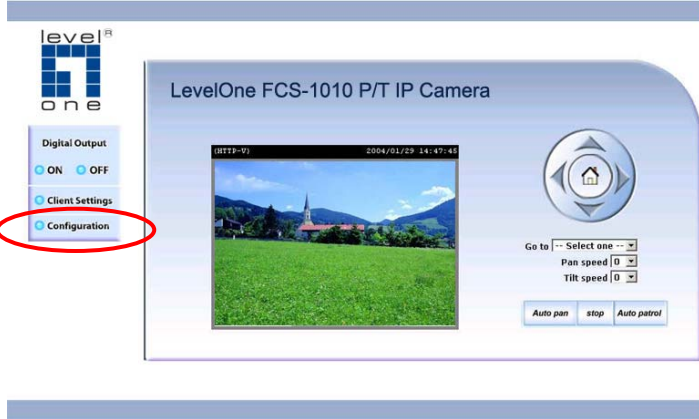
The following screen would appear automatically after successful login. Click "Yes" and proceed.



FCS-1010 should be active by now.

It is highly recommended that set a password for security purposes.

Click on **Configuration** for setting the password.



## Configuration Page

This is the page where you can change the basic settings of the FCS-1010.

Click on "**Security**" and set your password and add additional accounts to the FCS-1010 if necessary.

The screenshot shows the configuration interface for a LevelOne FCS-1010 P/T IP Camera. The browser address bar shows the URL. The page title is "LevelOne FCS-1010 P/T IP Camera Configuration". On the left, a navigation menu lists various settings: HOME, System, Security (highlighted with a red circle), Network, DDNS & UPnP, Audio/Video, Camera control, Motion detection, Application, View log file, View parameters, and Factory default. The main content area is titled "Security" and contains the following sections:

- Root password**: A note states "\* blank root password will disable user authentication". Below are two input fields for "Root password" and "Confirm password", followed by a "Save" button.
- Add user**: Includes input fields for "User name" and "User password", and two checkboxes: "Permission for I/O control" and "Permission for PT control". An "Add" button is located to the right of the second checkbox.
- Delete user**: Features a dropdown menu for "User name" (currently set to "-- no user --") and a "Delete" button.
- At the bottom, there are two checkboxes: "Allow 'demo' account to view" and "Allow more guests with snapshot mode". Below these is a "Snapshot interval" field set to "10" seconds, with a "Save" button.

Version : 0100e

**The basic installation and configuration of FCS-1010, P/T IP Camera, is now complete. Please refer to the user`s manual for further configuration.**