



# **Fixed Network Camera Hardware User Manual**

FCS-0051

Ver. 2014/05/05

# Table of Contents

## **Precautions** **3**

---

<b>Safety Instructions .....</b>	<b>5</b>
----------------------------------	----------

## **Introduction** **6**

---

<b>List of Models.....</b>	<b>6</b>
<b>Package Contents.....</b>	<b>6</b>
<b>Physical Description .....</b>	<b>7</b>
<b>Basic Connections .....</b>	<b>8</b>

## **Accessing the Camera** **9**

---

<b>Configure the IP Addresses .....</b>	<b>9</b>
Using DHCP Server to Assign IP Addresses.....	9
Using the Default Camera IP Address.....	11
<b>Access the Camera.....</b>	<b>13</b>

# Precautions

### **Read these instructions**

You should read all the safety and operating instructions before using this product.

### **Heed all warnings**

You must adhere to all the warnings on the product and in the instruction manual. Failure to follow the safety instruction given may directly endanger people, cause damage to the system or to other equipment.

### **Servicing**

Do not attempt to service this video device yourself as opening or removing covers may expose you to dangerous voltage or other hazards. Refer all servicing to qualified service personnel.

### **Trademarks**

All names used in this manual are probably registered trademarks of respective companies.

### **Liability**

Every reasonable care has been taken during the writing of this manual. Please inform your local office if you find any inaccuracies or omissions. We cannot be held responsible for any typographical or technical errors and reserve the right to make changes to the product and manuals without prior notice.

## Hardware Manual

### Federal Communications Commission Statement



This equipment has been tested and found to comply with the limits for a class B digital device, pursuant to Part 15 of the FCC Rules. These limits are designed to provide reasonable protection against harmful interference in a residential installation. This equipment generates, uses, and can radiate radio frequency energy and, if not installed and used in accordance with the instructions, may cause harmful interference to radio communications. However, there is no guarantee that interference will not occur in a particular installation. If this equipment does cause harmful interference to radio or television reception, which can be determined by turning the equipment off and on, the user is encouraged to try to correct the interference by one or more of the following measures:

- Reorient or relocate the receiving antenna.
- Increase the separation between the equipment and receiver.
- Connect the equipment into an outlet on a circuit different from that to which the receiver is connected.
- Consult the dealer or an experienced radio/TV technician for help.

**Warning:** Changes or modifications to the equipment that are not expressly approved by the responsible party for compliance could void the user's authority to operate the equipment.

### European Community Compliance Statement



This product has been tested and found to comply with the limits for Class B Information Technology Equipment according to European Standard EN 55022 and EN 55024. In a domestic environment, this product may cause radio interference in which cause the user may be required to take adequate measures.

## Safety Instructions

---

### **Don't open the housing of the product**

#### **Cleaning**

Disconnect this video product from the power supply before cleaning.

#### **Attachments**

Do not use attachments not recommended by the video product manufacturer as they may cause hazards.

#### **Water and Moisture**

Do not use this video product near water, for example, near a bathtub, washbowl, kitchen sink, or laundry tub, in a wet basement, or near a swimming pool and the like.

### **Don't use accessories not recommended by the manufacturer**

Only install this device in a dry place protected from weather

#### **Servicing**

Do not attempt to service this video product yourself as opening or removing covers may expose you to dangerous voltage or other hazards. Refer all servicing to qualified service personnel.

#### **Damage Requiring service**

Disconnect this video product from the power supply immediately and refer servicing to qualified service personnel under the following conditions.

- 1) When the power-supply cord or plug is damaged
- 2) If liquid has been spilled, or objects have fallen into the video product.
- 3) If the video product has been directly exposed to rain or water.
- 4) If the video product does not operate normally by following the operating Instructions in this manual. Adjust only those controls that are covered by the instruction manual, as an improper adjustment of other controls may result in damage, and will often require extensive work by a qualified technician to restore the video product to its normal operation.


#### **Safety Check**

Upon completion of any service or repairs to this video product, ask the service technician to perform safety checks to determine if the video product is in proper operating condition.





# Introduction

## List of Models

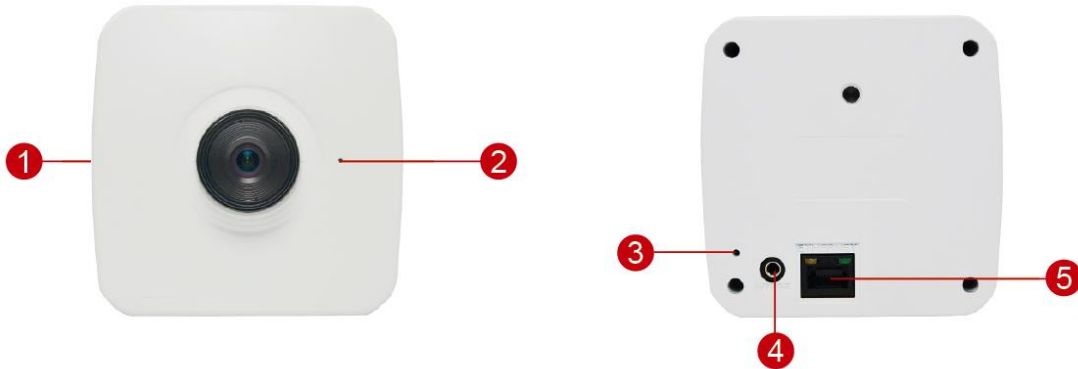
This hardware manual contains the following models:

FCS-0051		Fixed Network Camera, 5-Megapixel, PoE 802.3af, WDR
----------	---	---

## Package Contents

Camera	Bracket	Mounting Screw Kit
		
Quick Installation Guide		
		

## Physical Description

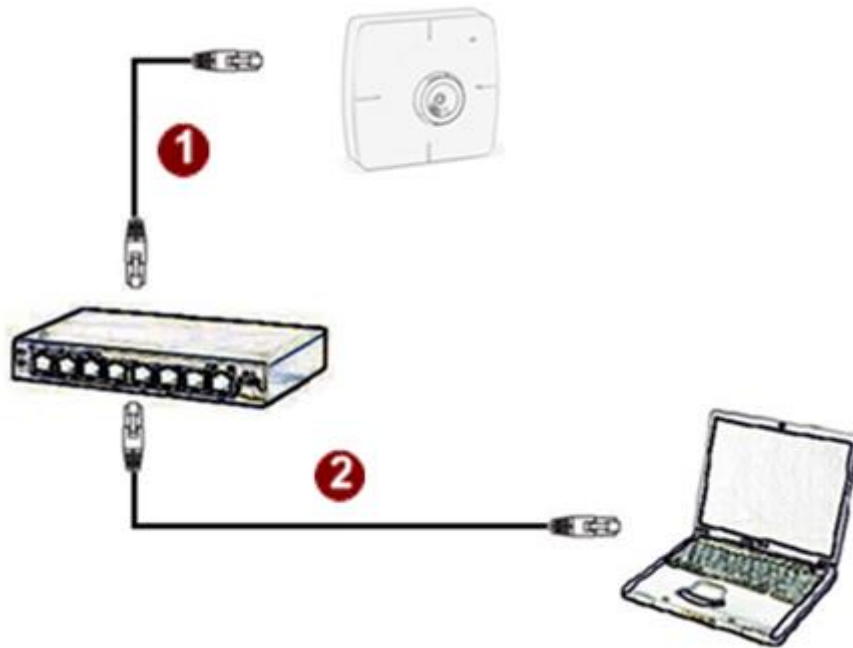


Item		Description
1	Memory Card Slot	Insert a memory card into this slot for local recording purposes. <b>NOTE:</b> Supports microSDHC and microSDXC cards.
2	Built-in Microphone	Connects to audio input devices, such as a microphone with built-in amplifier, etc. <b>NOTE:</b> The microphone must have a built-in amplifier. Connecting an ordinary microphone will dwarf sounds and will result in inaudible recording.
3	Audio Output	Connects to audio output devices, such as a speaker, etc.
4	Reset Button	The purpose of reset button is to restore the factory default settings of the camera, including administrator's password. <b>The reset button can be used for following purposes:</b> <ol style="list-style-type: none"> <li>1. The administrator's password has been forgotten and therefore the camera cannot be accessed.</li> <li>2. In case of IP address, mask, or allow/deny filter related issues, resulting with inability to modify these settings.</li> <li>3. In case of connectivity issues or abnormal video quality.</li> </ol> <b>How to do the reset?</b> Using a pointed object, such as a paper clip, press and hold the reset button for at least 5 seconds.
5	Ethernet Port	Connects to a network using a standard Ethernet cable.

## Basic Connections

---

Follow the procedures below to connect the IP device to the respective apparatuses.



**Please use a PoE (Power over Ethernet) supported switch or injector:**

- 1) Connect your IP Camera to the PoE Switch / Injector by CAT5 or CAT6 cables with RJ45 connector.
- 2) Connect your PoE Switch / Injector to PC with another CAT5 / CAT6 network cable.



# Accessing the Camera

## Configure the IP Addresses

---

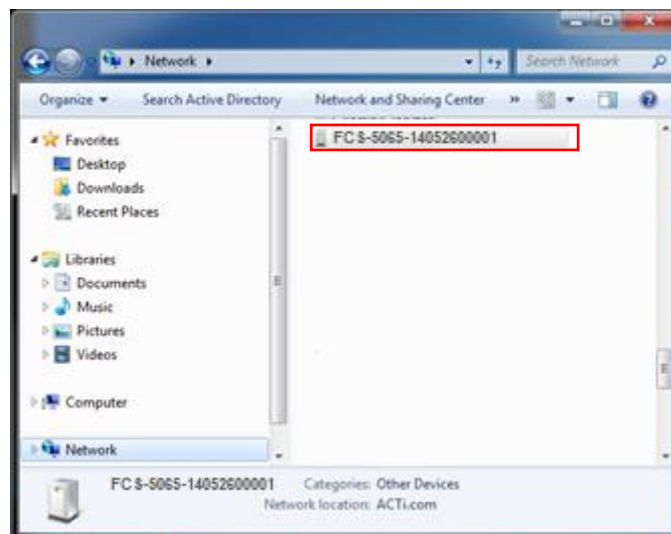
In order to be able to communicate with the camera from your PC, both the camera and the PC have to be within the same network segment. In most cases, it means that they both should have very similar IP addresses, where only the last number of the IP address is different from each other. There are 2 different approaches to IP Address management in Local Area Networks – by DHCP Server or Manually.

### Using DHCP Server to Assign IP Addresses

If you have connected the computer and the camera into the network that has a DHCP server running, then you do not need to configure the IP addresses at all – both the camera and the PC would request a unique IP address from DHCP server automatically. In such case, the camera will immediately be ready for the access from the PC. The user, however, might not know the IP address of the camera yet. It is necessary to know the IP address of the camera in order to be able to access it by using a Web browser.

**The quickest way to discover the cameras in the network** is to use the simplest network search, built in the Windows system – just by pressing the “Network” icon, all the cameras of the local area network will be discovered by Windows thanks to the UPnP function support of our cameras.

In the example below, we successfully found the camera that we had just connected to the network.



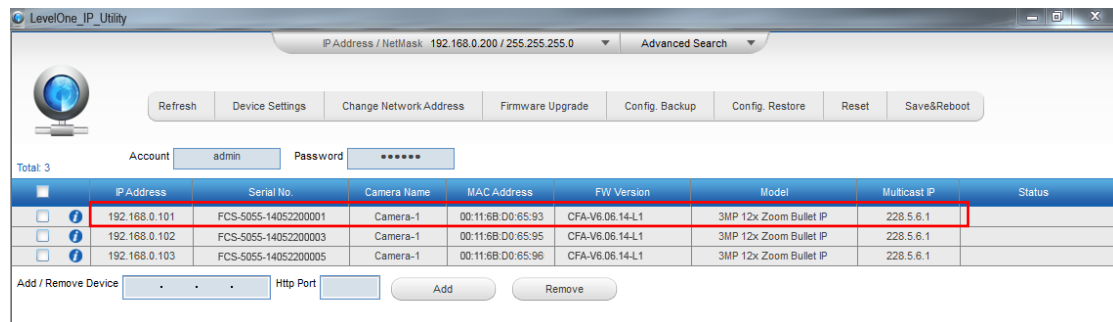
## Hardware Manual

By double-clicking with the left mouse on the camera model, it is possible to automatically launch the default browser of the PC with the IP address of the target camera filled in the address bar of the browser already.

If you work with our cameras regularly, then **there is even a better way to discover the cameras in the network** – by using **IP Utility**. The IP Utility is a light software tool that can not only discover the cameras, but also list lots of valuable information, such as IP and MAC addresses, serial numbers, firmware versions, etc, and allows quick configuration of multiple devices at the same time.

The IP Utility can be downloaded for free from our website.

With just one click, you can launch the IP Utility and there will be an instant report as follows:



The screenshot shows the LevelOne\_IP\_Utility application window. At the top, it displays the current IP Address / NetMask as 192.168.0.200 / 255.255.255.0 and an Advanced Search dropdown. Below this are several action buttons: Refresh, Device Settings, Change Network Address, Firmware Upgrade, Config. Backup, Config. Restore, Reset, and Save&Reboot. There are also input fields for Account (admin) and Password (\*\*\*\*\*). A table below shows a list of discovered cameras with 3 total entries. The first row is highlighted with a red border. Below the table are input fields for adding or removing devices, including an Http Port field and Add/Remove buttons.

	IP Address	Serial No.	Camera Name	MAC Address	FW Version	Model	Multicast IP	Status
<input type="checkbox"/>	192.168.0.101	FCS-5055-14052200001	Camera-1	00:11:6B:D0:65:93	CFA-V6.06.14-L1	3MP 12x Zoom Bullet IP	228.5.6.1	
<input type="checkbox"/>	192.168.0.102	FCS-5055-14052200003	Camera-1	00:11:6B:D0:65:95	CFA-V6.06.14-L1	3MP 12x Zoom Bullet IP	228.5.6.1	
<input type="checkbox"/>	192.168.0.103	FCS-5055-14052200005	Camera-1	00:11:6B:D0:65:96	CFA-V6.06.14-L1	3MP 12x Zoom Bullet IP	228.5.6.1	

You can quickly see the camera model in the list. Click on the IP address to automatically launch the default browser of the PC with the IP address of the target camera filled in the address bar of the browser already.

# Hardware Manual

## Using the Default Camera IP Address

If there is no DHCP server in the given network, the user may have to assign the IP addresses to both PC and camera manually to make sure they are in the same network segment.

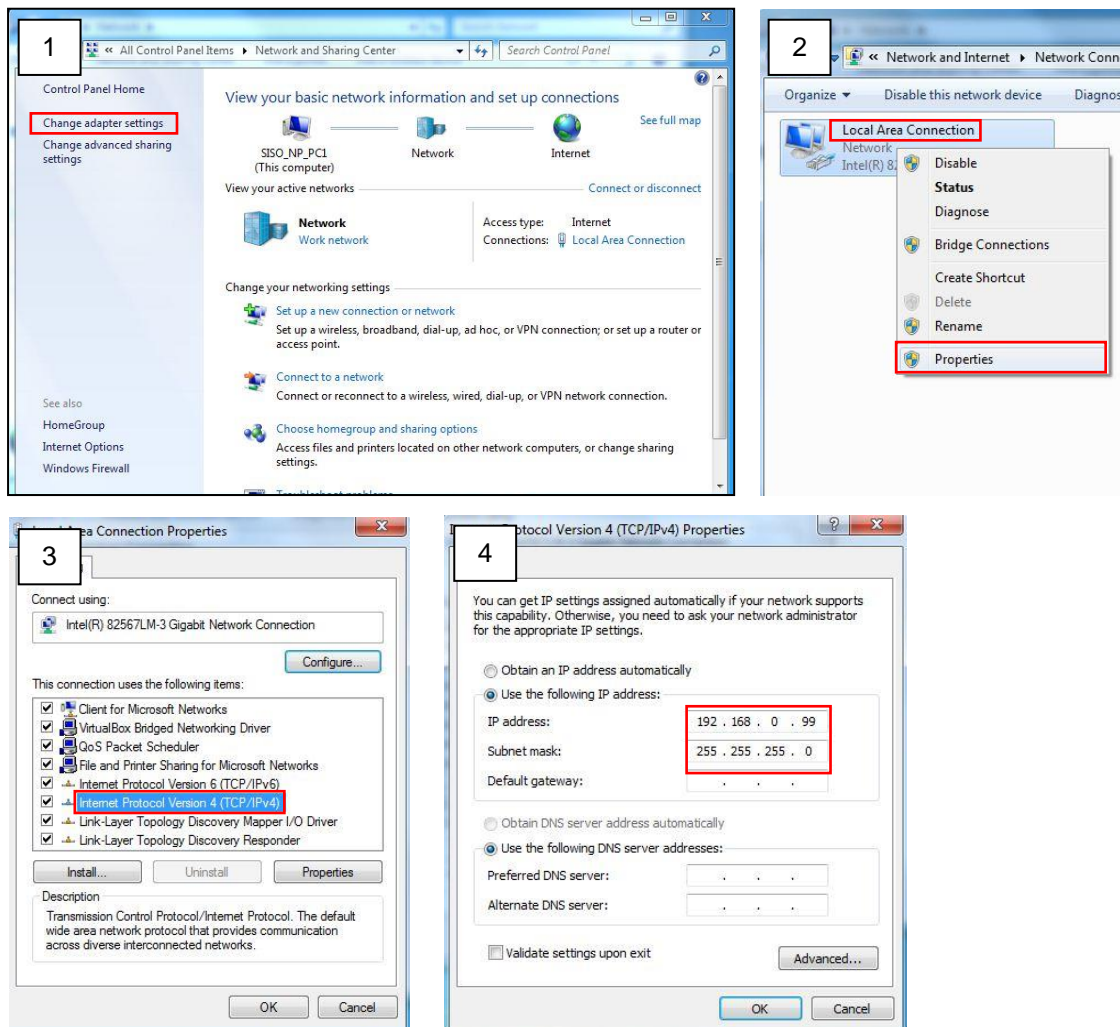
When the camera is plugged into network and it does not detect any DHCP services, it will automatically assign itself a default IP:

**192.168.0.100**

Whereas the default port number would be **80**. In order to access that camera, the IP address of the PC has to be configured to match the network segment of the camera.

## Manually adjust the IP address of the PC:

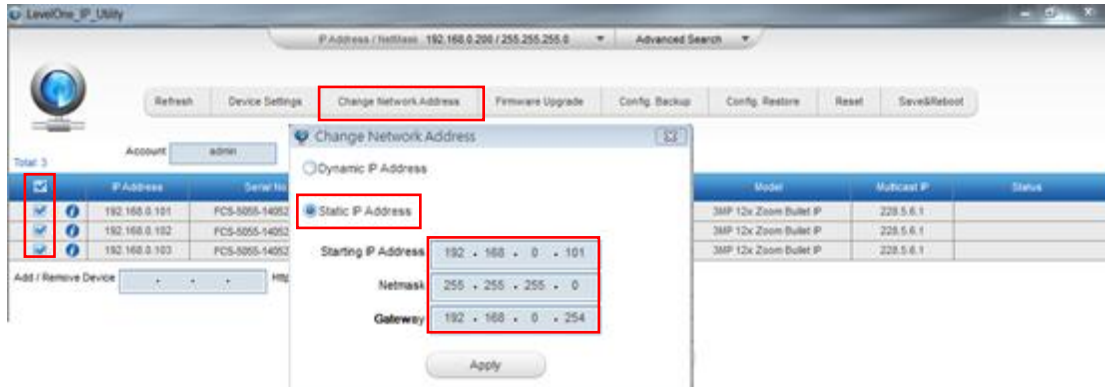
In the following example, based on Windows 7, we will configure the IP address to **192.168.0.99** and set Subnet Mask to **255.255.255.0** by using the steps below:



## Hardware Manual

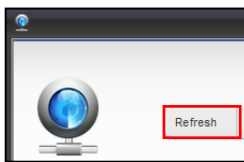
### Manually adjust the IP addresses of multiple cameras:

If there are more than 1 camera to be used in the same local area network and there is no DHCP server to assign unique IP addresses to each of them, all of the cameras would then have the initial IP address of **192.168.0.100**, which is not a proper situation for network devices – all the IP addresses have to be different from each other. The easiest way to assign cameras the IP addresses is by using **IP Utility**:



With the procedure shown above, all the cameras will have unique IP addresses, starting from 192.168.0.101. In case there are 20 cameras selected, the last one of the cameras would have the IP 192.168.0.120.

Later, by pressing the “Refresh” button of the IP Utility, you will be able to see the list of cameras with their new IP addresses.



Please note that it is also possible to change the IP addresses manually by using the Web browser. In such case, please plug in only one camera at a time, and change its IP address by using the Web browser before plugging in the next one. This way, the Web browser will not be confused about two devices having the same IP address at the same time.

## Access the Camera

Now that the camera and the PC are both having their unique IP addresses and are under the same network segment, it is possible to use the Web browser of the PC to access the camera.

You can use **any of the browsers** to access the camera, however, the full functionality is provided only for **Microsoft Internet Explorer**.

The browser functionality comparison:

Functionality	Internet Explorer	Other browsers
Live Video	Yes	Yes*
Live Video Area Resizable	Yes	No
PTZ Control	Yes	Yes
Capture the snapshot	Yes	Yes
Video overlay based configuration (Motion Detection regions, Privacy Mask regions)	Yes	No
All the other configurations	Yes	Yes

\* When using non-Internet Explorer browsers, free third-party software plug-ins must be installed to the PC first to be able to get the live video feed from the camera:

Browser	Required Plug-In
Safari	QuickTime ( <a href="http://www.apple.com/quicktime/download/">http://www.apple.com/quicktime/download/</a> )
Other non-Internet Explorer browsers	Basic VLC Media Player ( <a href="http://www.videolan.org">http://www.videolan.org</a> )

***Disclaimer Notice:** The camera manufacturer does not guarantee the compatibility of its cameras with QuickTime or VLC Player – since these are third party softwares. The third parties have the right to modify their utility any time which might affect the compatibility. In such cases, please use Internet Explorer browser instead.*

When using Internet Explorer browser, the ActiveX control for video stream management will be downloaded from the camera directly – the user just has to accept the use of such control when prompted so. No other third party utilities are required to be installed in such case.

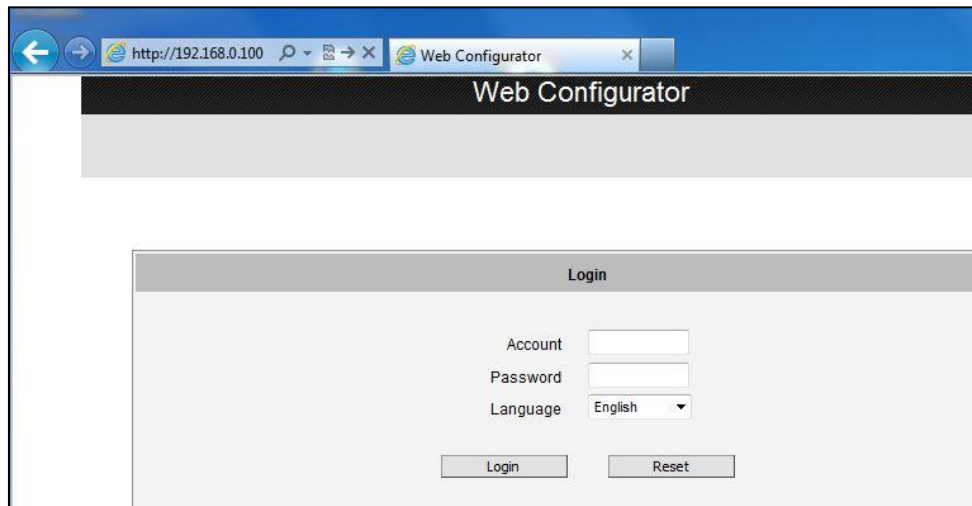
## Hardware Manual

The following examples in this manual are based on Internet Explorer browser in order to cover all functions of the camera.

Assuming that the camera's IP address is **192.168.0.100**, you can access it by opening the Web browser and typing the following address into Web browser's address bar:

**http://192.168.0.100**

Upon successful connection to the camera, the user interface called **Web Configurator** would appear together with the login page. The HTTP port number was not added behind the IP address since the default HTTP port of the camera is 80, which can be omitted from the address for convenience.



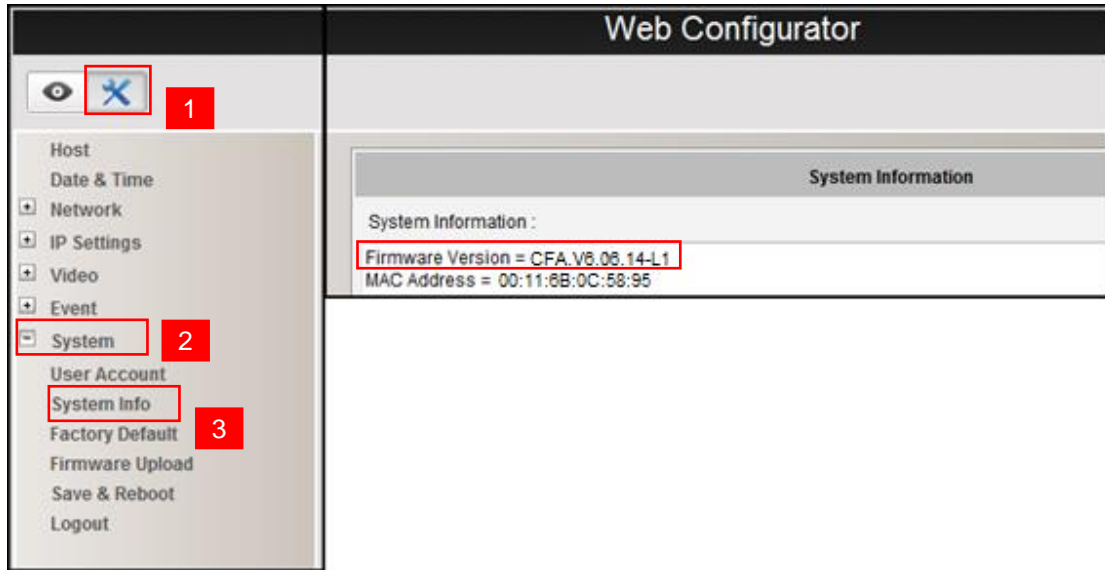
Before logging in, you need to know the factory default Account and Password of the camera.

Account: **Admin**

Password: **123456**

## Hardware Manual

To check the firmware version through the Web Configurator, access the **Setup** page and click **System > System Info**.



For further operations, please refer to the **Firmware User Manual**.