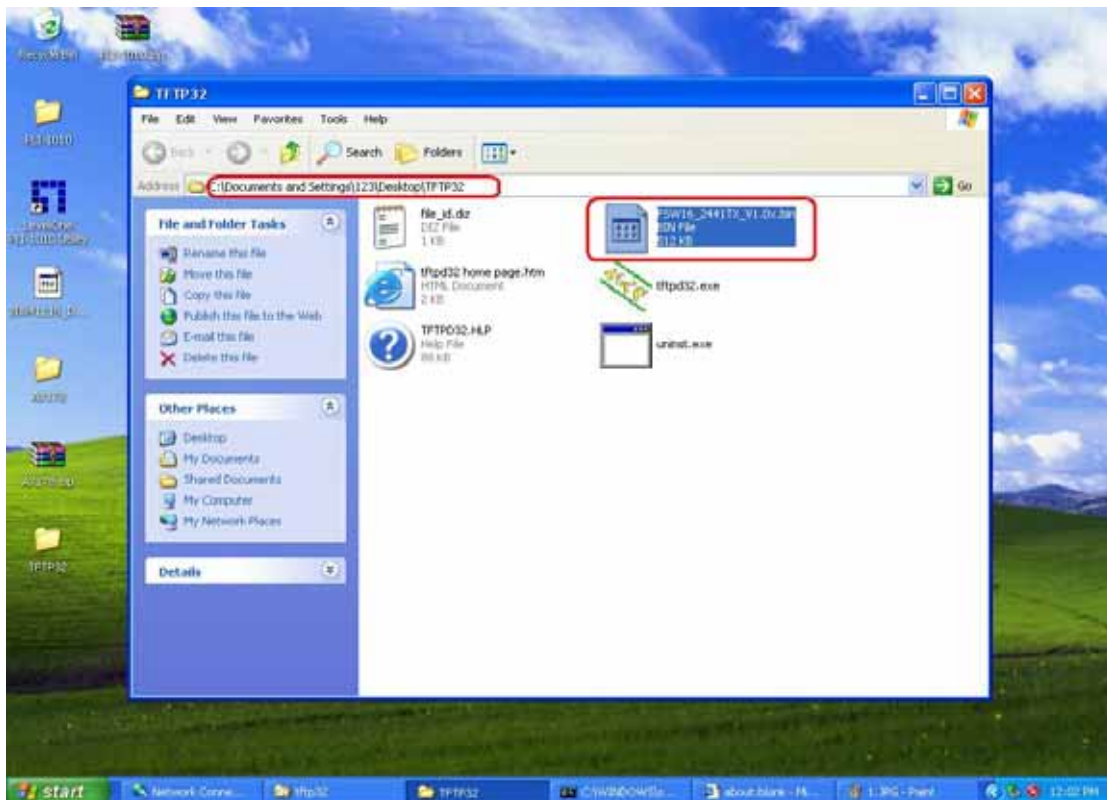


## FSW-1641/2441TX F/W update procedure

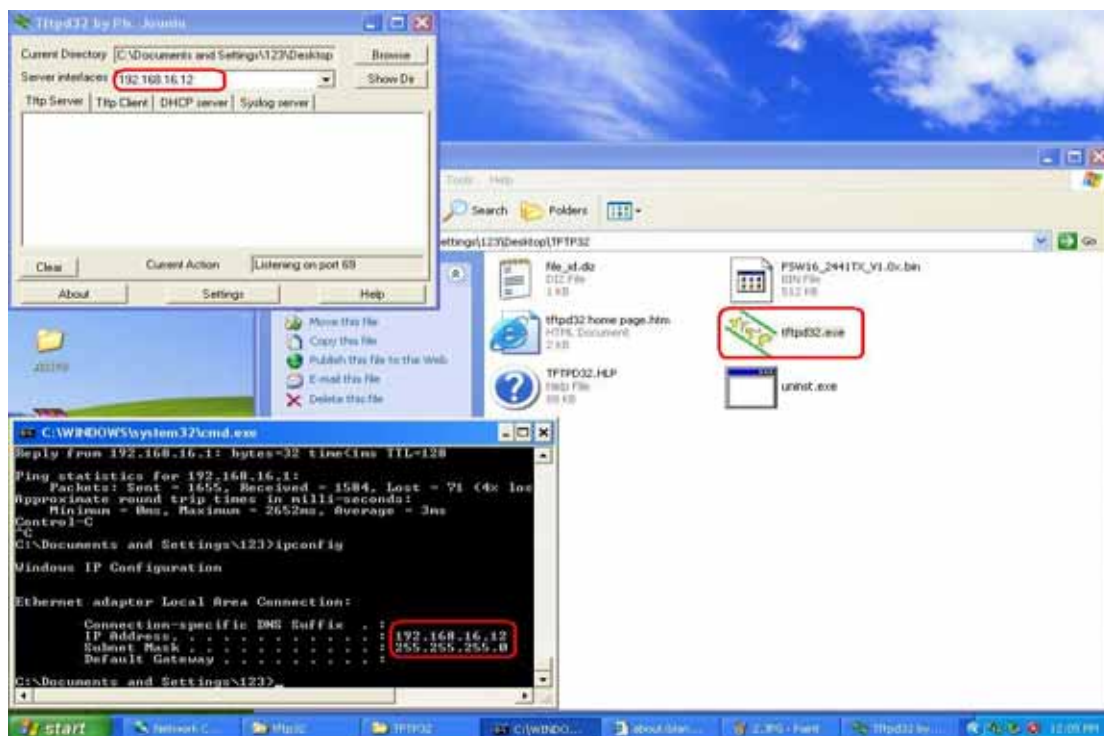
(1) Copy the TFTP32 folder to the desktop of Windows and set this PC's IP in same subnet as FSW-1641/2441TX you would like to update.



(2) Copy the F/W Bin file to TFTP32 folder



(3) Execute tfptd32.exe then the PC will be a TFTP server

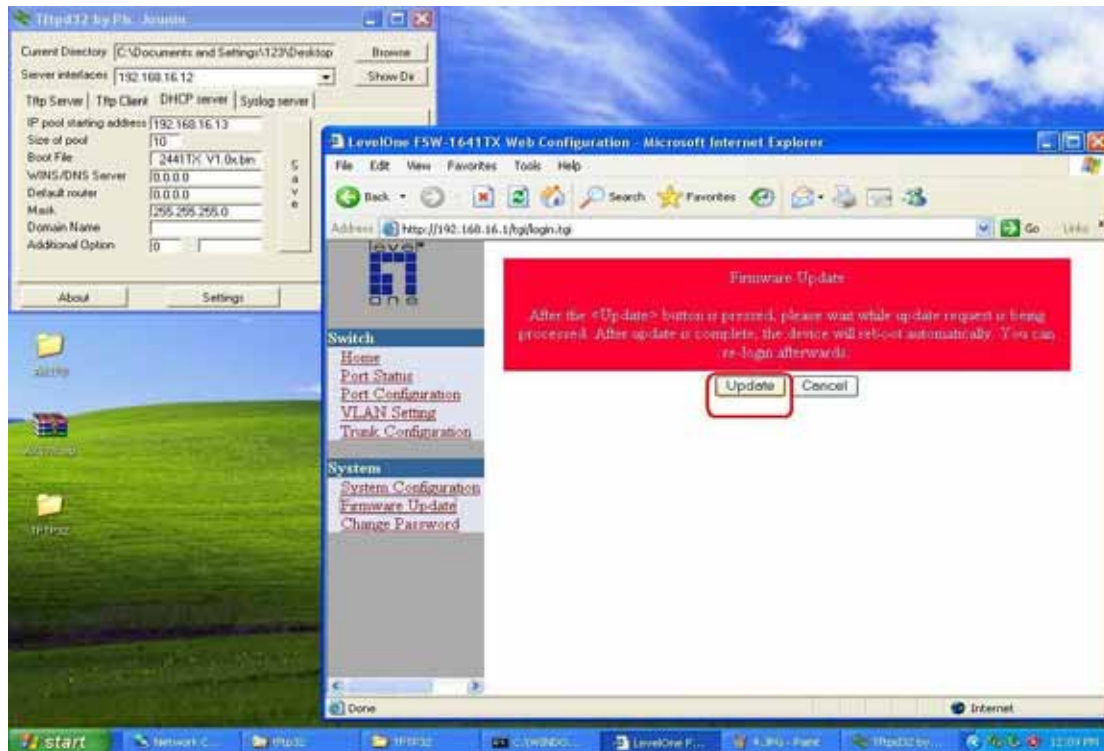


(4) Set TFTP DHCP server information:

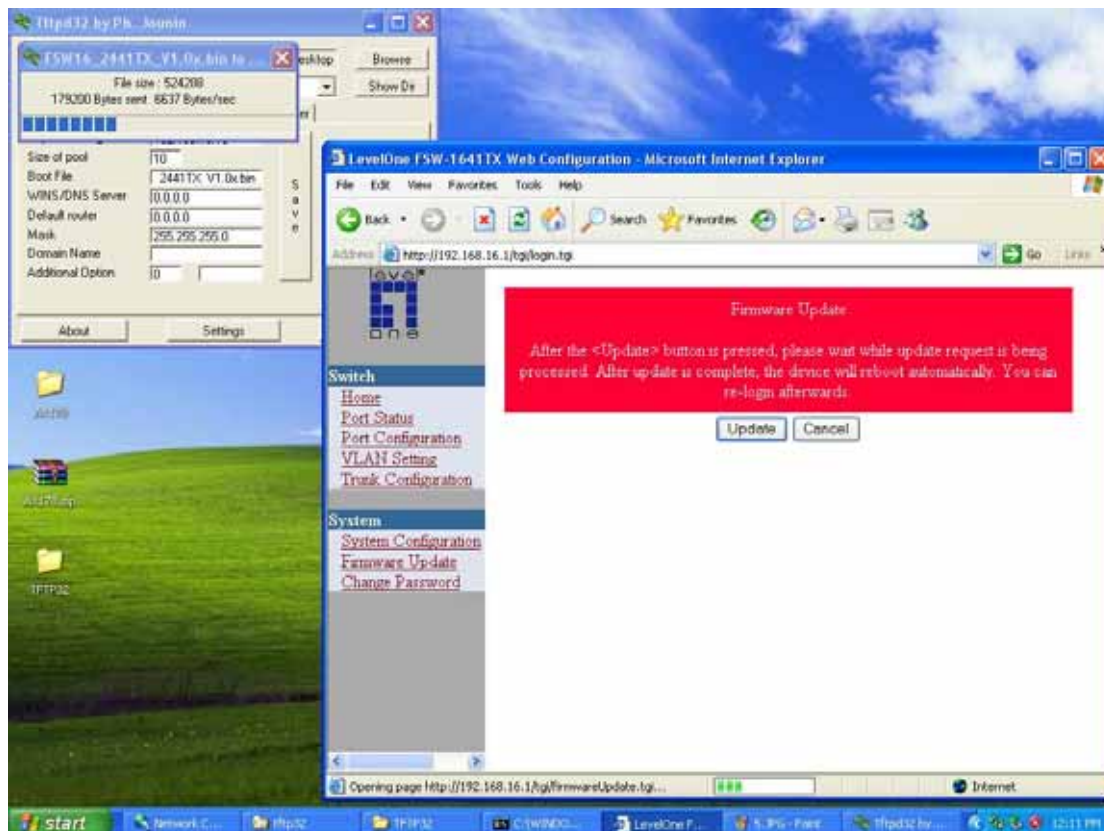
1. IP pool starting address → any free same subnet IP as TFTP server
2. Size of pool → any
3. Boot file → full file name of the F/W Bin file
4. Mask → same as TFTP server



(5) Login to the web management of FCS-1641/2441TX then check the Firmware Update page, click the “Update” button for F/W update.

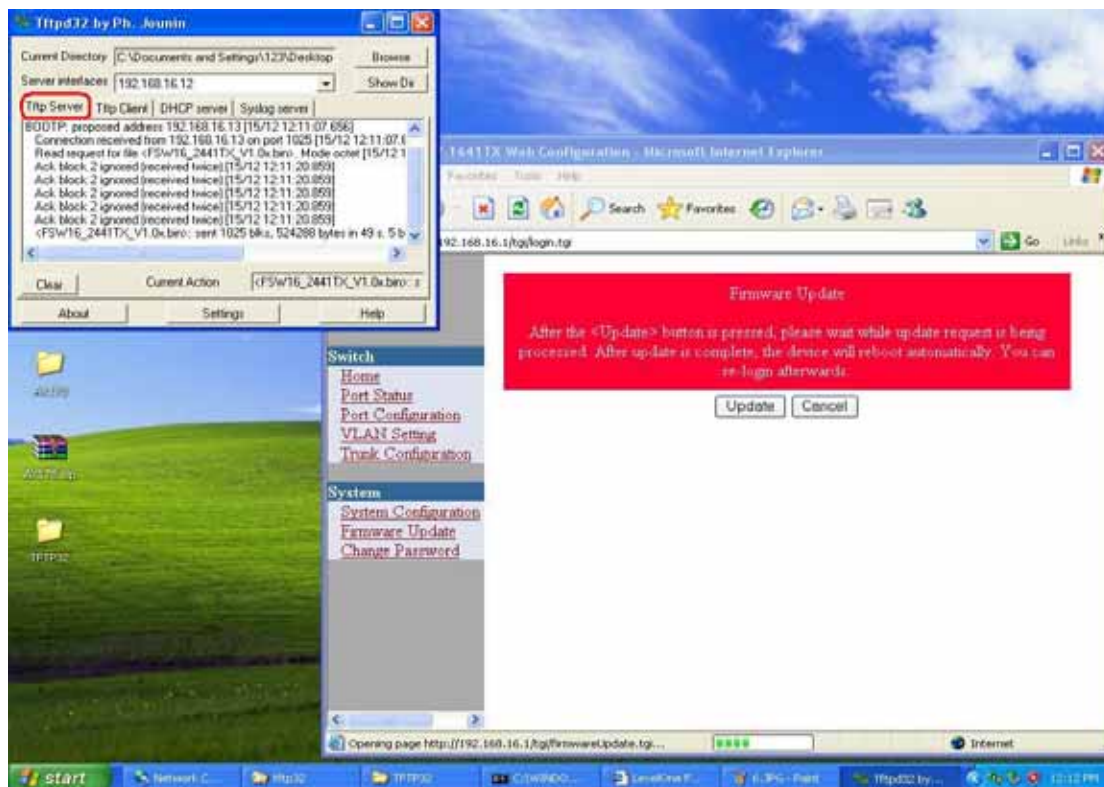


(6) FCS-1641/2441TX 's F/W is being updating.





(7) Click the TFTP server tab to make sure F/W Bin file has been transmitted to FCS-1641/2441TX completely then press the reset button of the switch 1 minute later.



(8) New F/W is updated successfully.

