

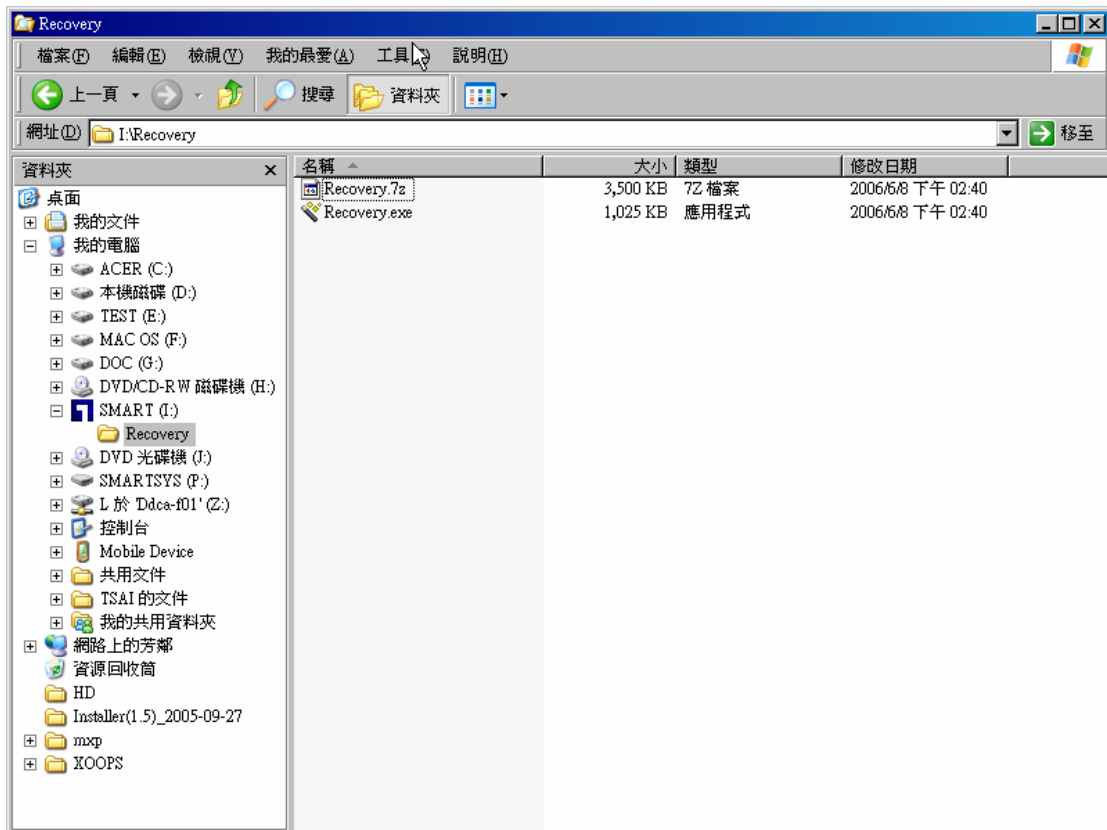
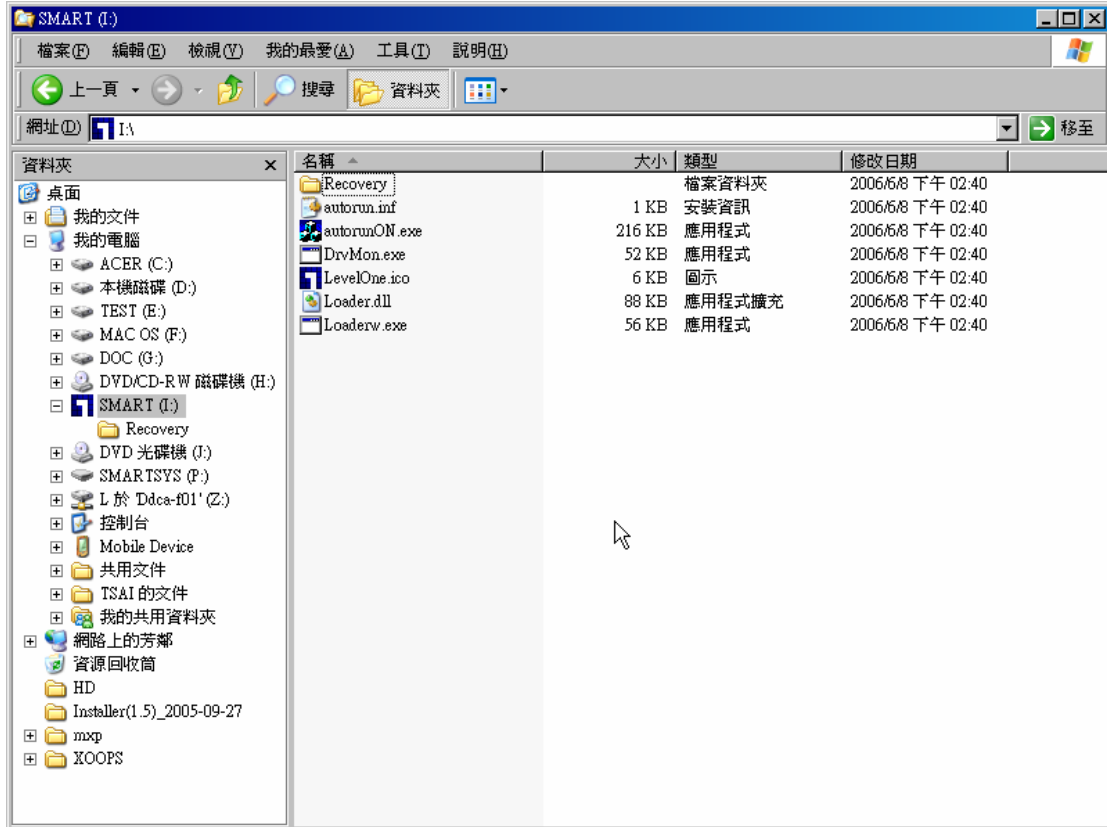


What should I do if I removed or format the System files of MUS-2500 accidentally?

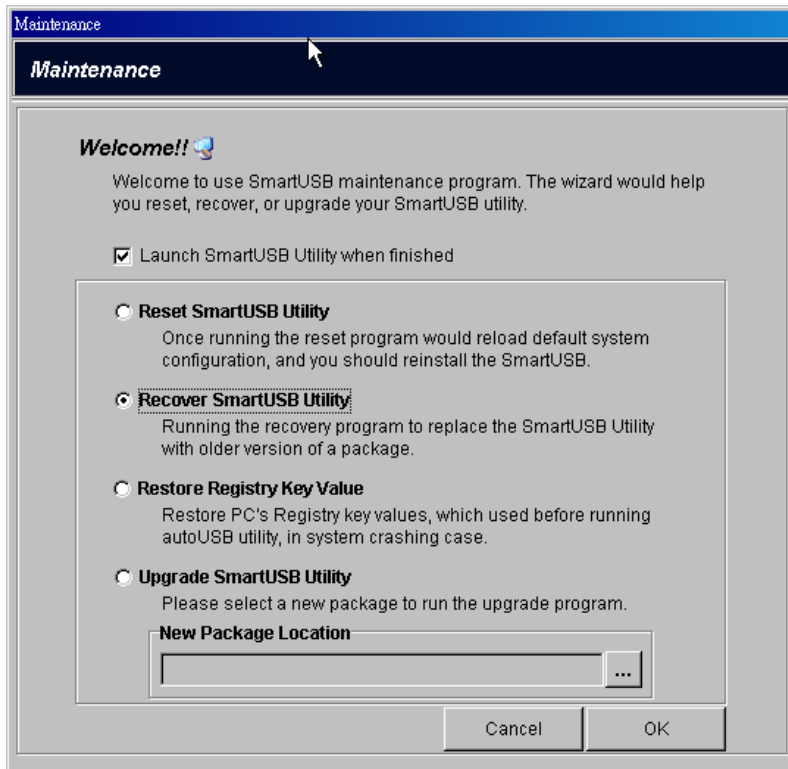
1. There should be a Smart drive and Smartsys drive once you plug in MUS-2500.

| 名稱 | 類型 | 大小總計 | 可用空間 | 註解 |
|---------------------|------------|---------|---------|--------|
| ACER (C:) | 本機磁碟 | 14.9 GB | 5.28 GB | |
| 本機磁碟 (D:) | 本機磁碟 | 4.99 GB | 4.81 GB | |
| TEST (E:) | 本機磁碟 | 4.99 GB | 1.09 GB | |
| MAC OS (F:) | 本機磁碟 | 4.99 GB | 795 MB | |
| DOC (G:) | 本機磁碟 | 25.8 GB | 3.24 GB | |
| DVD/CD-RW 磁碟機 (H:) | 光碟機 | | | |
| SMART (I:) | 光碟機 | 4.87 MB | 0 個位元組 | |
| DVD 光碟機 (J:) | 光碟機 | | | |
| SMARTSYS (P:) | 卸除式磁碟 | | | |
| L 於 'Ddca-f01' (Z:) | 已中斷連線的網路磁碟 | | | |
| Mobile Device | 系統資料夾 | | | |
| 共用文件 | 檔案資料夾 | | | |
| TSAI 的文件 | 檔案資料夾 | | | |
| 我的共用資料夾 | 系統資料夾 | | | 包含您與連絡 |

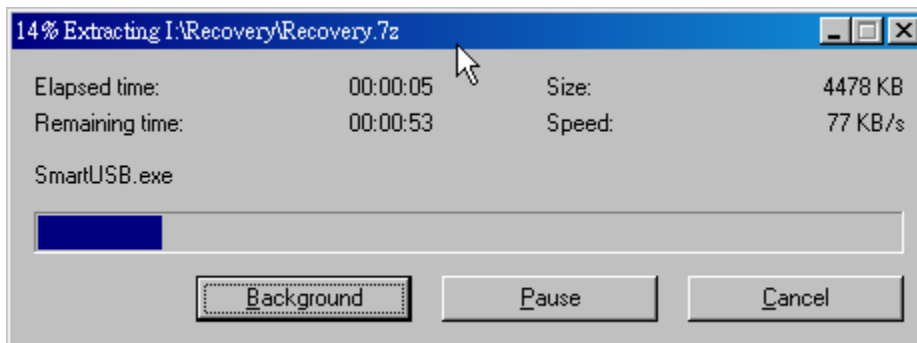
2. The Smart drive file can not be deleted, the Smartsys drive can be deleted or format.
3. In case you lost the file on Smartssy drive, please enter the Smart drive --> Recovery folder --> Click on Recovery.exe



4. Click on Restore SmartUSB Utility.



5. Recovering.



6. Recovered.

