

1. Connect the power supply to IP-KVM switch
2. Connect the null modem cable to IP-KVM switch serial port and PC serial port.
3. Use terminal software (e.g. hyper term or minicom) to connect to IP-KVM switch.  
(Set terminal software to 115200,8,N,1,none)
4. Hold reset button then plug in power and press < ESC > immediately.
5. You will see some device information and a '=>' prompt. Enter the command 'defaults' and press < Enter >(see figure.1):.

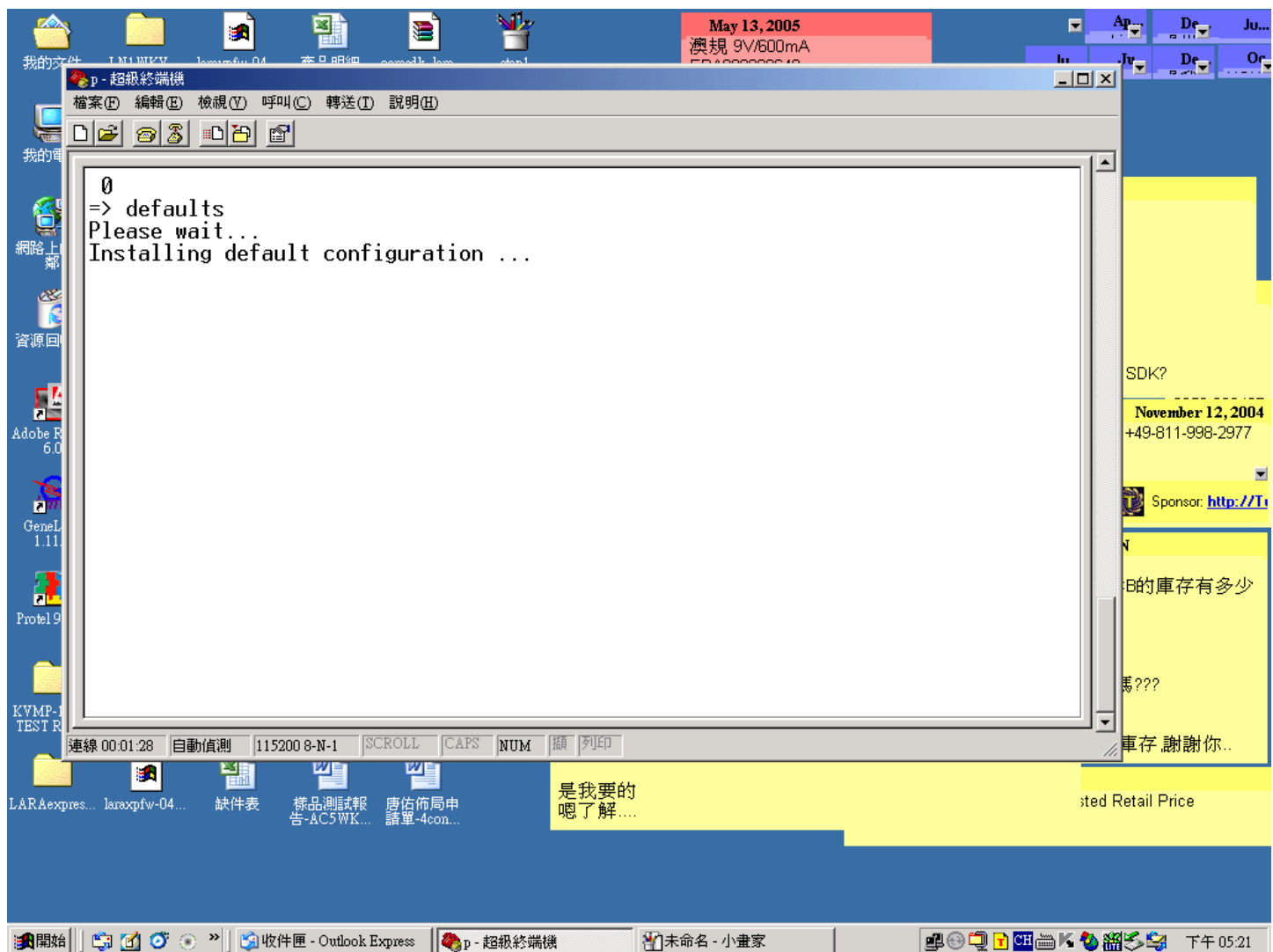


Figure 1

6. Wait a few minutes you will see information as below(see figure.2):

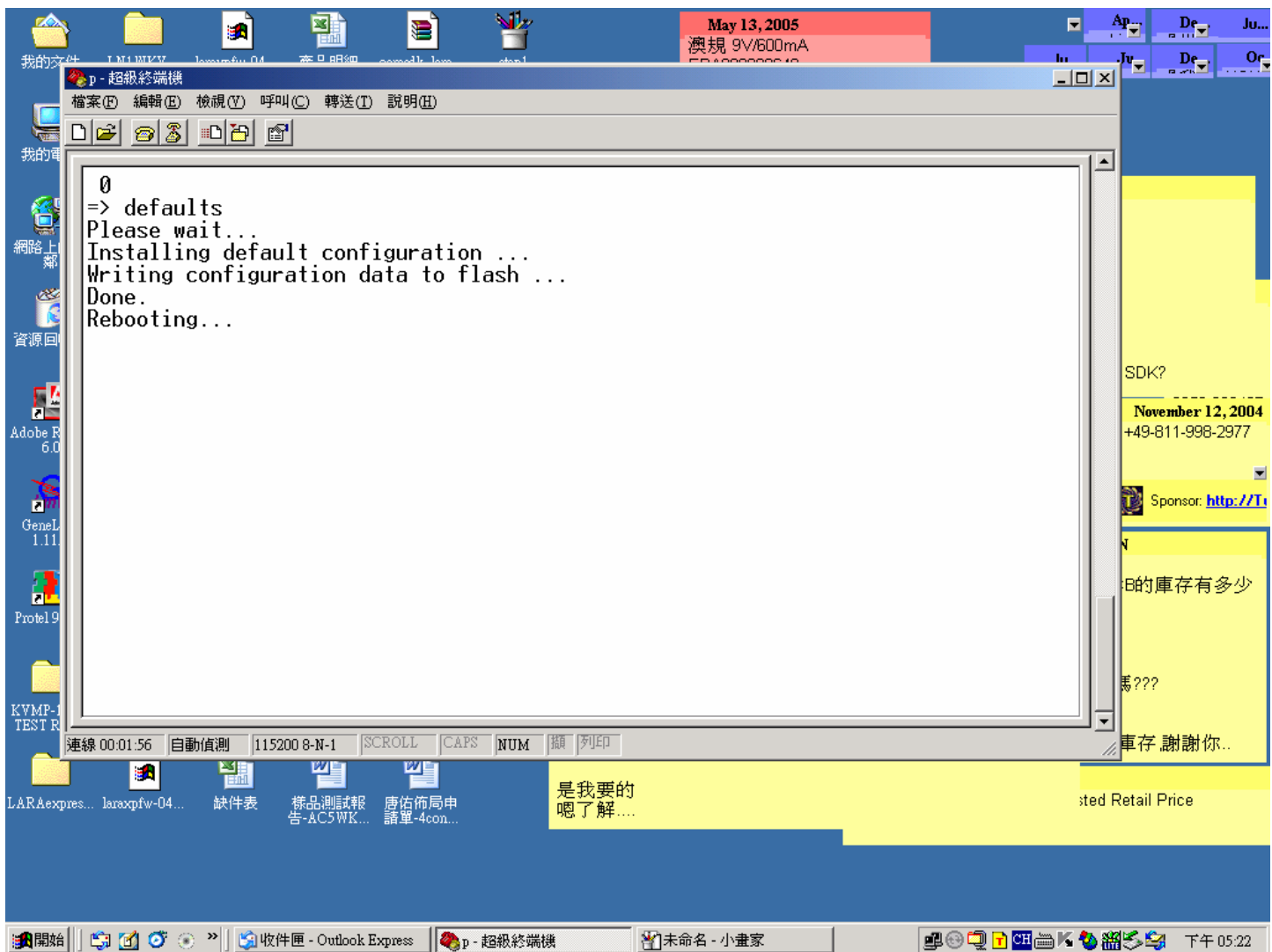


Figure 2

7. At the end of this procedure, you will see the message "Rebooting....."