



Level1 router IPSec VPN vs. FBR-2000 IPSec VPN

Level1 router is applicable to FBR-1407, FBR-1409TX, FBR-1417TX,
WBR-2401, WBR-3403TX, WBR-3404TX and WBR-3402

Information:

FBR-1417TX IPSec VPN:

WAN IP: 192.168.1.1

LAN IP: 192.168.123.254

LAN IP sub mask: 255.255.255.0

FBR-2000 IPSec VPN:

WAN IP: 192.168.1.2

LAN IP: 192.168.10.1

LAN IP sub mask: 255.255.255.0

Setup:

FBR-1417 IPSec VPN Configuration

1. FBR-1417TX VPN setting

Tunnel name : eg. 123

Method : IKE

Click on More

The screenshot shows the Level One Broadband Router Configuration web interface. The address bar displays <http://192.168.123.254/>. The page title is "Broadband Router Configuration" with the Level One logo. The navigation menu includes: Status/ Wizard/ Basic Setting/ Forwarding Rules/ Security Setting/ Advanced Setting/ Toolbox/ Logout. The "Security Setting" menu is expanded, showing: Packet Filters, Domain Filters, URL Blocking, MAC Control, VPN, and Miscellaneous. The "VPN Settings" section is active, showing a table with columns "Item" and "Setting". The "VPN" item is checked "Enable". The "Max. number of tunnels" is set to 5. Below this is a table with columns "ID", "Tunnel Name", and "Method".

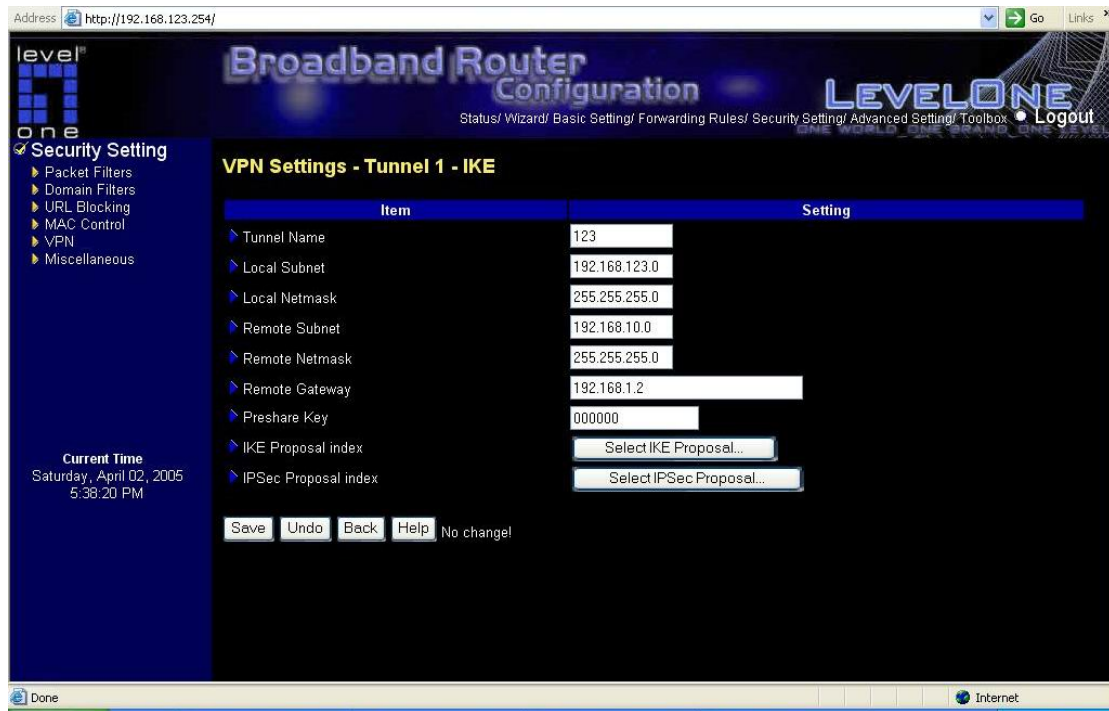
Item	Setting
VPN	<input checked="" type="checkbox"/> Enable
Max. number of tunnels	5

ID	Tunnel Name	Method
1	123	IKE <input type="button" value="More"/>
2		IKE <input type="button" value="More"/>
3		IKE <input type="button" value="More"/>
4		IKE <input type="button" value="More"/>
5		IKE <input type="button" value="More"/>

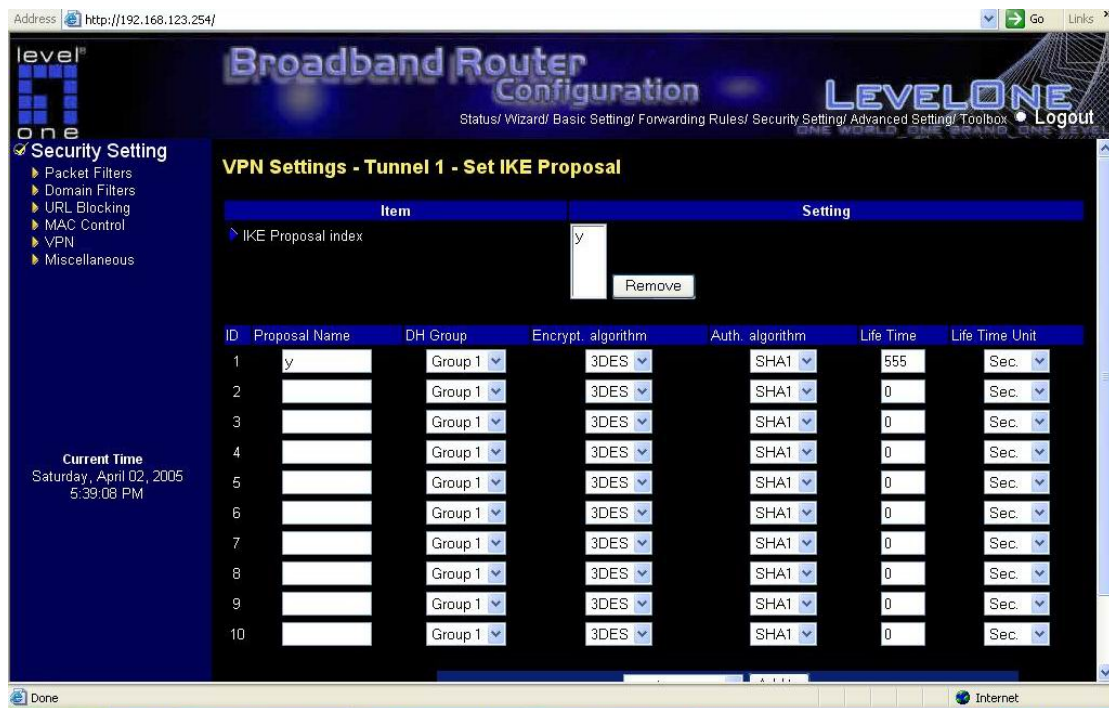
At the bottom of the VPN Settings section, there are buttons: << Previous, Next >>, Save, Undo, Dynamic VPN Settings..., L2TP Server Setting..., PPTP Server Setting..., and Help. The current time is displayed as Saturday, April 02, 2005, 5:37:34 PM.

2. Please configure as below

Click on Select IKE proposal



- Please configure IKE proposal as below. Save and Reboot.
Both FBR-1417TX and FBR-2000 need to have the same IKE proposal.



- Back to previous page, click on IPSec Proposal
Configure IPSec proposal as below, save and reboot.
Both FBR-1417TX and FBR-2000 need to have the same IPSec proposal.

Address <http://192.168.123.254/> Go Links »

level
one

Broadband Router Configuration
LEVELONE
Status/ Wizard/ Basic Setting/ Forwarding Rules/ Security Setting/ Advanced Setting/ Toolbox Logout

Security Setting

- Packet Filters
- Domain Filters
- URL Blocking
- MAC Control
- VPN
- Miscellaneous

Current Time
Saturday, April 02, 2005
5:39:50 PM

VPN Settings - Tunnel 1 - Set IPSec Proposal

Item Setting

IPSec Proposal index

t Remove

ID	Proposal Name	DH Group	Encap. protocol	Encrypt. algorithm	Auth. algorithm	Life Time	Life Time Unit
1	t	Group 1	ESP	3DES	SHA1	0	Sec.
2		None	ESP	3DES	None	0	Sec.
3		None	ESP	3DES	None	0	Sec.
4		None	ESP	3DES	None	0	Sec.
5		None	ESP	3DES	None	0	Sec.
6		None	ESP	3DES	None	0	Sec.
7		None	ESP	3DES	None	0	Sec.
8		None	ESP	3DES	None	0	Sec.
9		None	ESP	3DES	None	0	Sec.
10		None	ESP	3DES	None	0	Sec.

Done Internet

FBR-2000 IPSec VPN Configuration

5. IPSec Autokey for FBR-2000, Click New Entry

Address <http://192.168.10.1/> Go Links » Norton Internet Security

level
one

Multi-homing Router

IPSec Autokey

Name	Gateway IP	Destination Subnet	Algorithm	Status	Configure
123	192.168.1.1	192.168.123.0	HMAC_MD5	Connect	Disconnect Modify Remove

New Entry

Done Internet

6. Please configure FBR-2000 IPSec Autokey as below

Both FBR-1417TX and FBR-2000 need to have the same configuration.

level one Multi-homing Router IPsec Autokey

VPN Auto Keyed Tunnel

Name: 123

From Source: LAN DMZ

Use interface: WAN1 WAN2

Subnet / Mask: 192.168.10.0 / 255.255.255.0

To Destination:

Remote Gateway -- Fixed IP: 192.168.1.1

Subnet / Mask: 192.168.123.0 / 255.255.255.0

Remote Gateway -- Dynamic IP

Subnet / Mask: / 255.255.255.0

Remote Client -- Fixed IP or Dynamic IP

Authentication Method: Preshare

Preshared Key: 000000

Encapsulation:

ISAKMP Algorithm:

ENC Algorithm: 3DES

AUTH Algorithm: SHA1

Group: GROUP1

IPsec Algorithm:

Data Encryption + Authentication

ENC Algorithm: 3DES

AUTH Algorithm: SHA1

level one Multi-homing Router IPsec Autokey

ENC Algorithm: 3DES

AUTH Algorithm: SHA1

Group: GROUP1

IPsec Algorithm:

Data Encryption + Authentication

ENC Algorithm: 3DES

AUTH Algorithm: SHA1

Authentication Only

Perfect Forward Secrecy

IPsec Lifetime: 28800 Seconds

Keep alive IP:

Aggressive mode

My ID:

Peer ID:

GRE/IPsec

GRE Local IP:

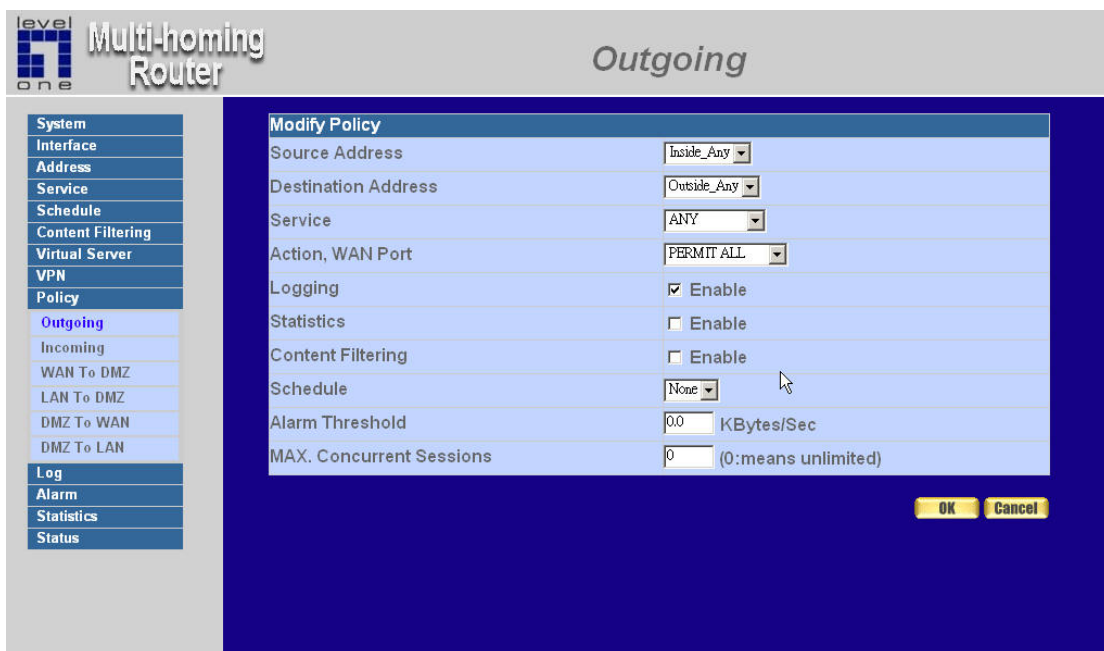
GRE Remote IP:

Schedule: None

Show remote Network Neighborhood

OK Cancel

7. Please remember to turn on the outgoing policy of FBR-2000.



- Ping Test from the computer (192.168.123.123) connected to FBR-1417 (192.168.1.1) to computer (192.168.10.3) connected to FBR-2000(192.168.1.2)

