

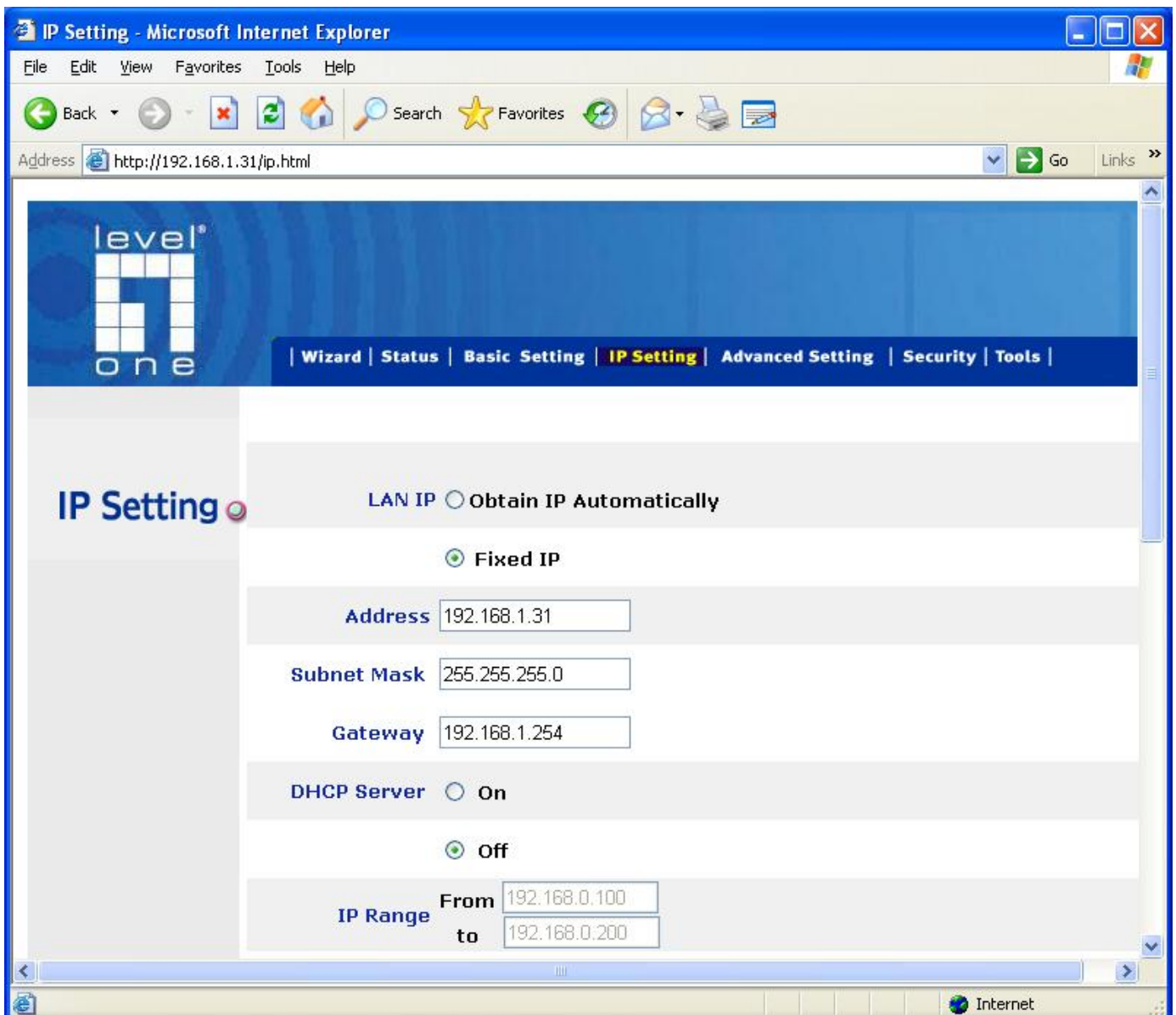


How to use WAP-3000 or WAP-3100 with AMG-2000?

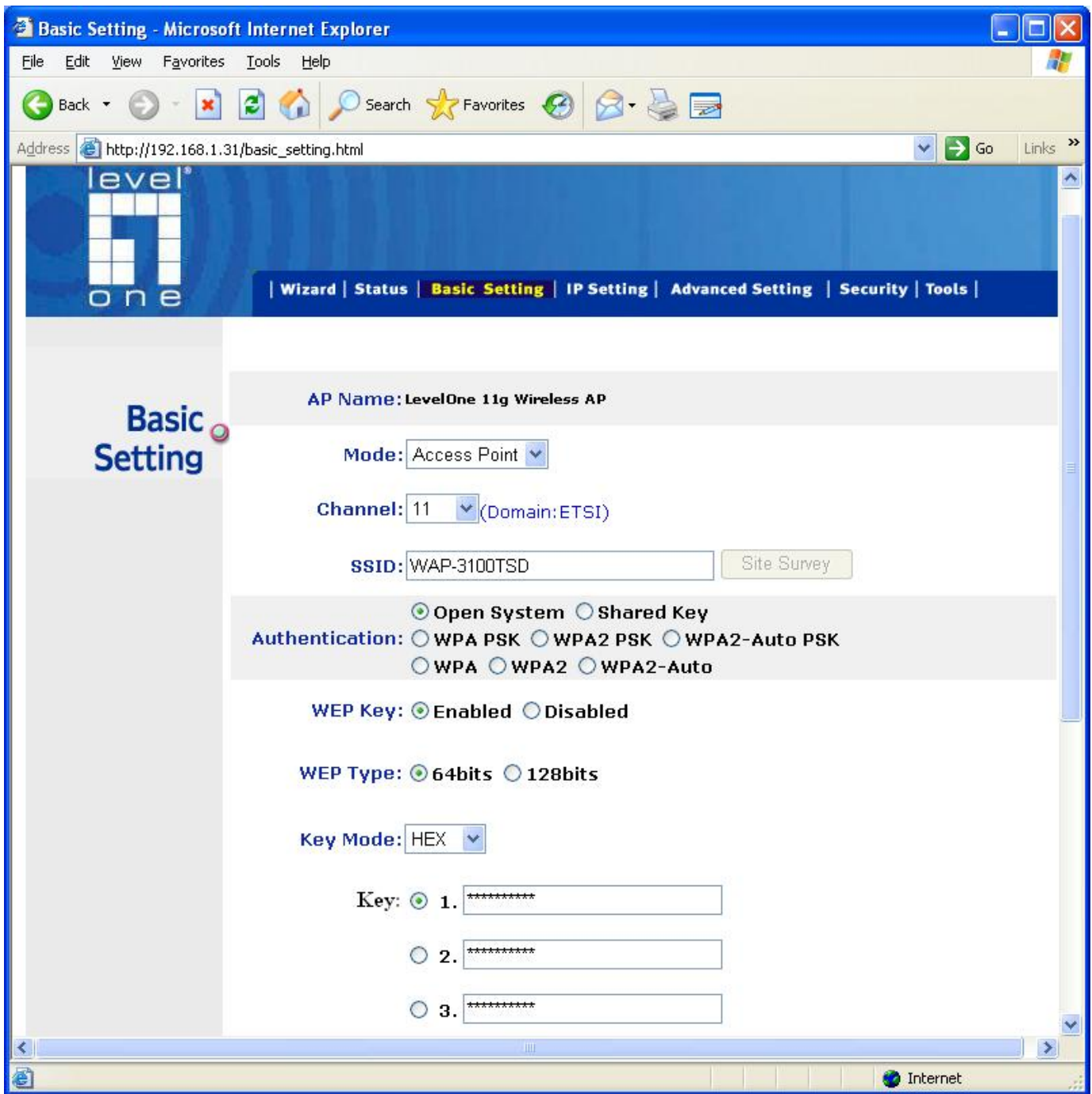
AMG-2000 is capable of manage up to 12 WAP-0005, WAP-0006 and WAP-0009 in it's AP management function. AMG-2000 can still work with other Access points in the market, only the APs can not be directly managed through AMG-2000's AP management. In another word, you will need to log in each AP and configure individually.

The example here is using LevelOne WAP-3000/3100.

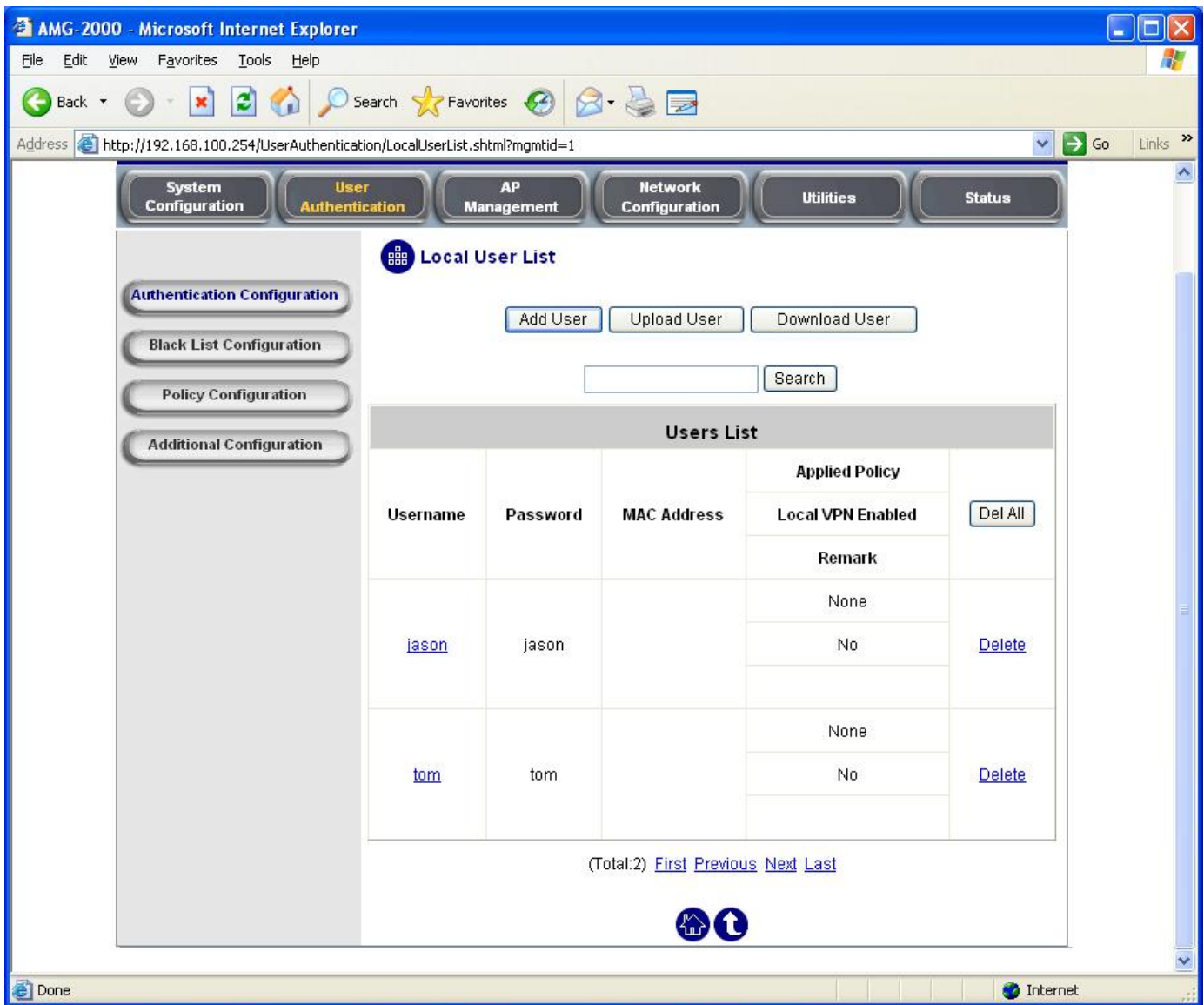
1. Please configure different fixed IP for your WAP-3000/3100.



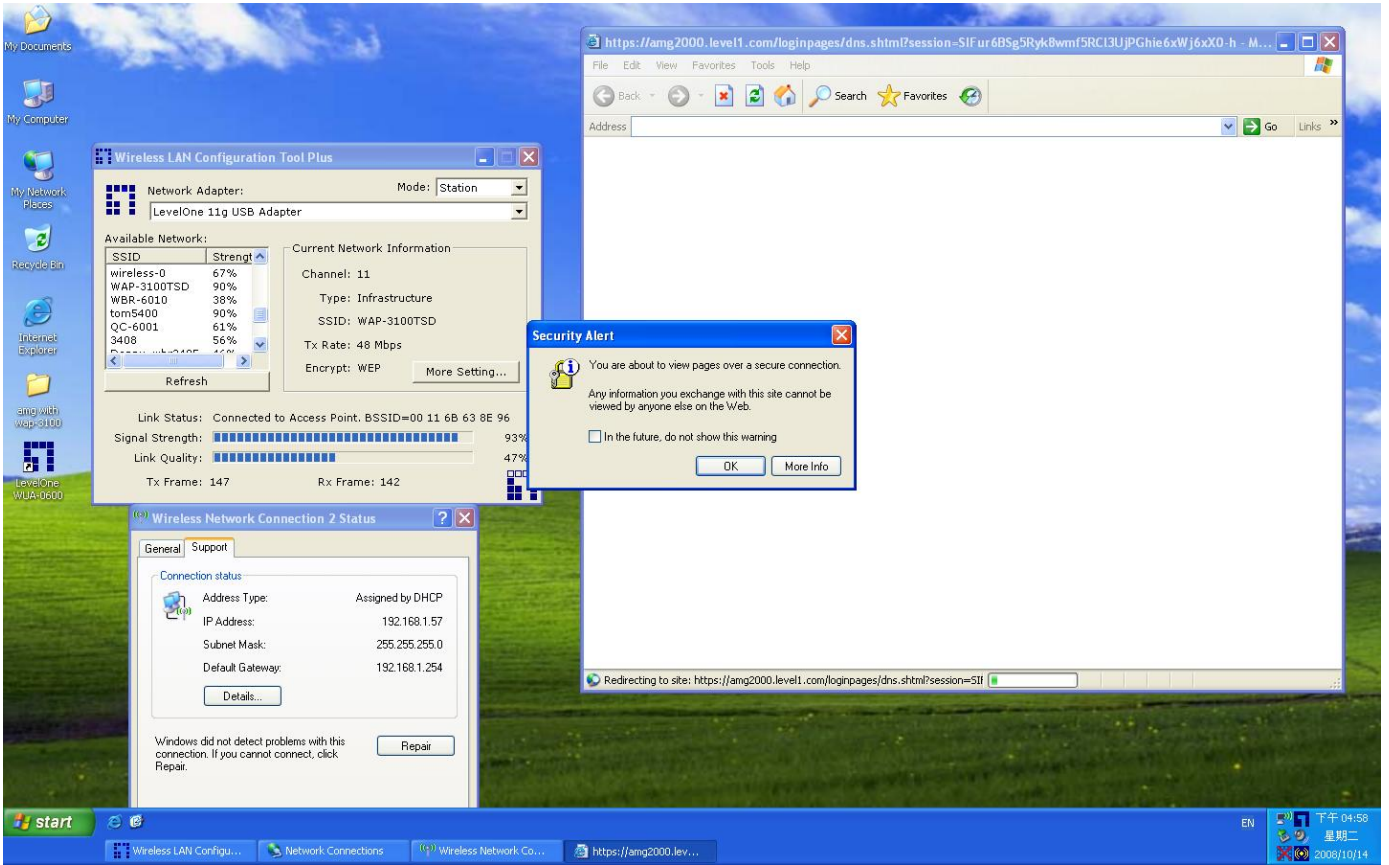
2. Please configure your WAP-3000/3100 with the same SSID, so Wireless client can roam between different AP.



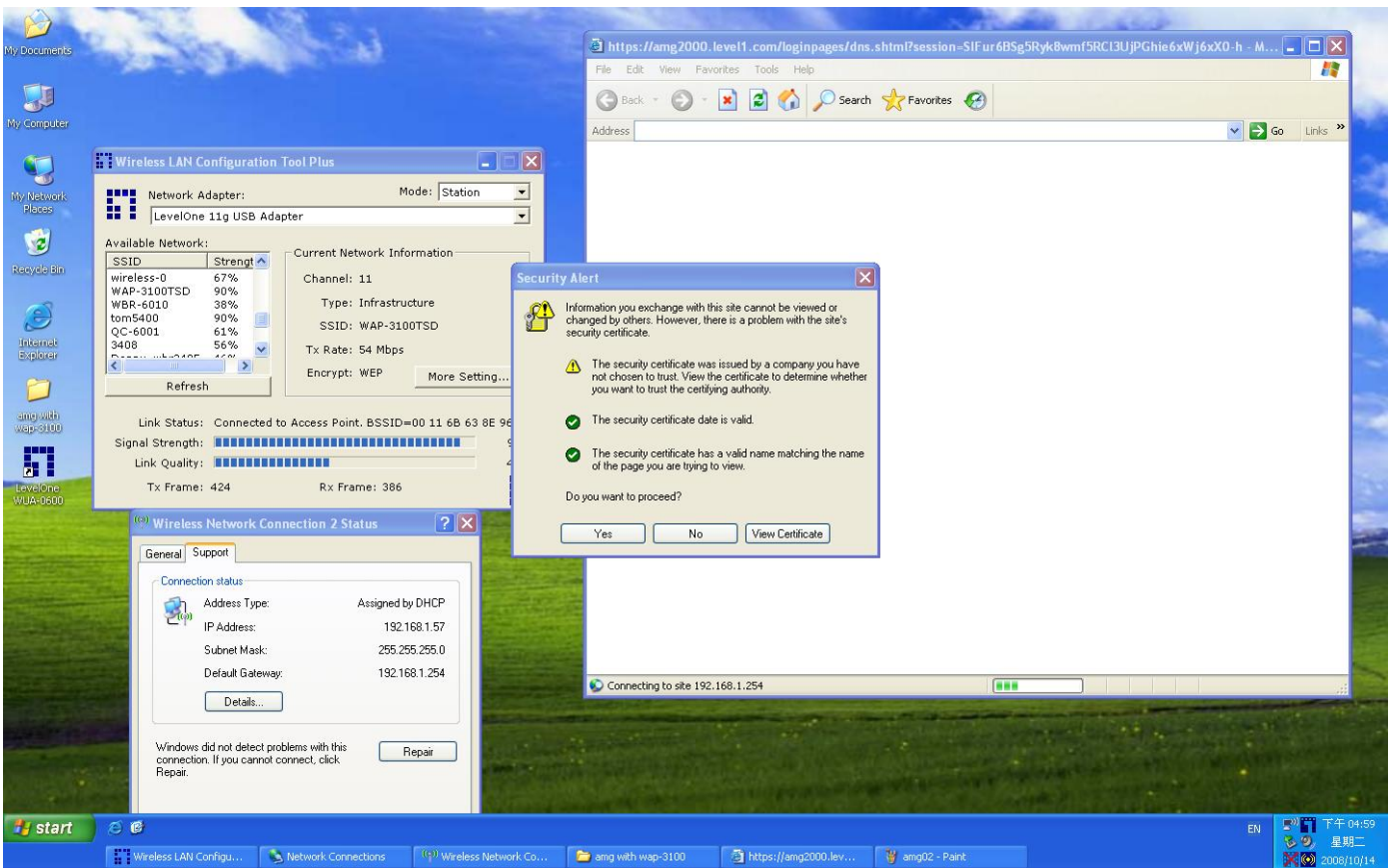
3. Please log into AMG-2000, add new user.



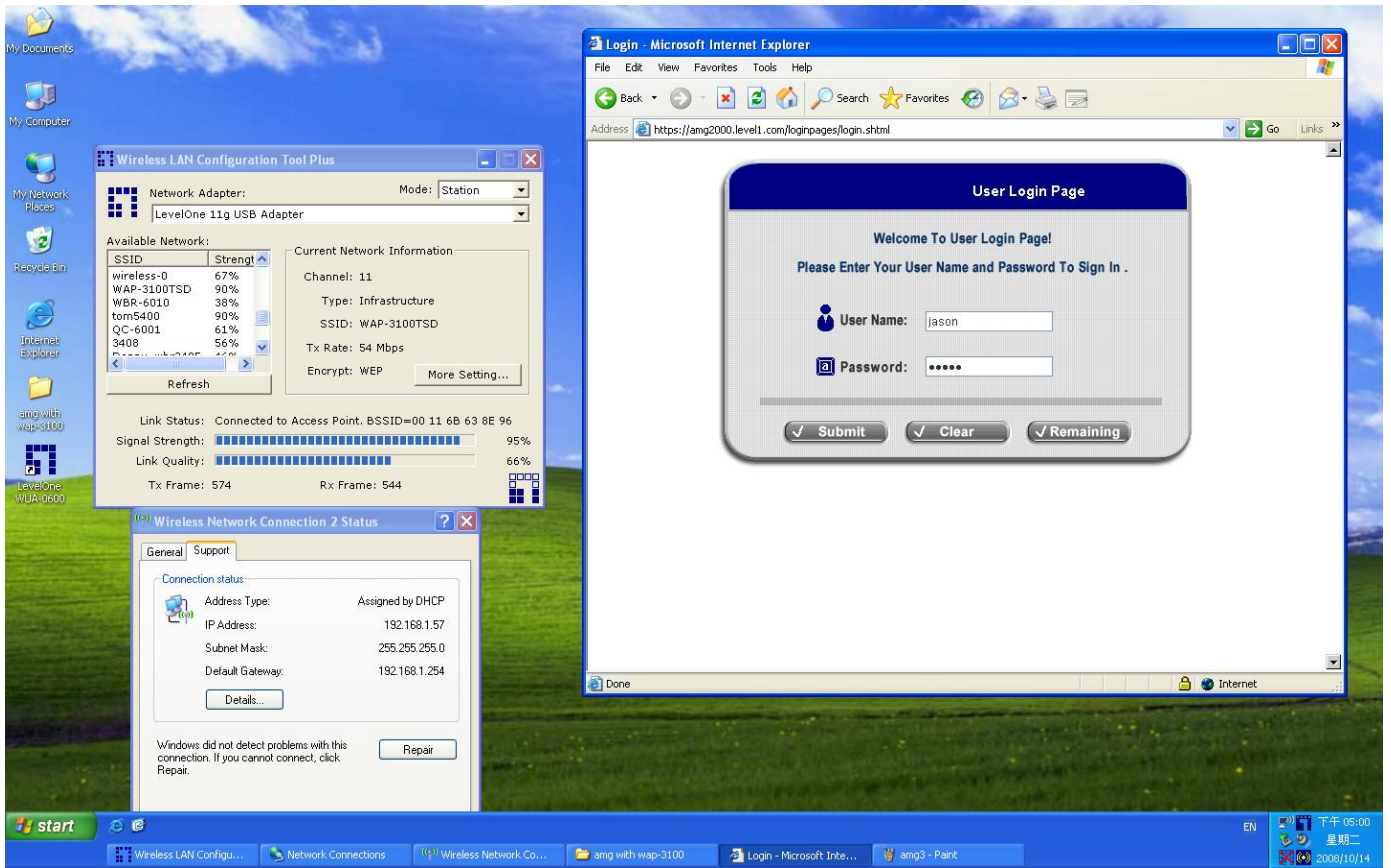
4. Search for the SSID you had configured in WAP-3000/3100, in this case WAP-3100TSD, associate to it.
5. When you open the web browser, you should see the screen as below.



6. When you open your web browser, Click on Yes.



7. Please enter your user name and password as configured in AMG-2000.



8. Login Successfully. You will now able to browse the internet.

