



How to use IP CamSecure Recording and Remote Playback

Please check whether your IP Cam Secure and Installation Wizard software version is the latest one. If not, Please download form our website.

<http://global.level1.com/technical.php>

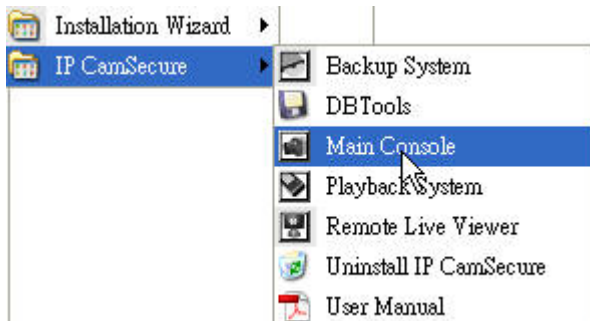
There are some devices examples for your reference.

- PC: windows XP IP:192.168.123.102
- WCS-2060 IP:192.168.123.173
- Router: WBR-3406 IP:192.168.123.254
- WBR-3406 WAN IP:219.81.163.247

1. Software Setting

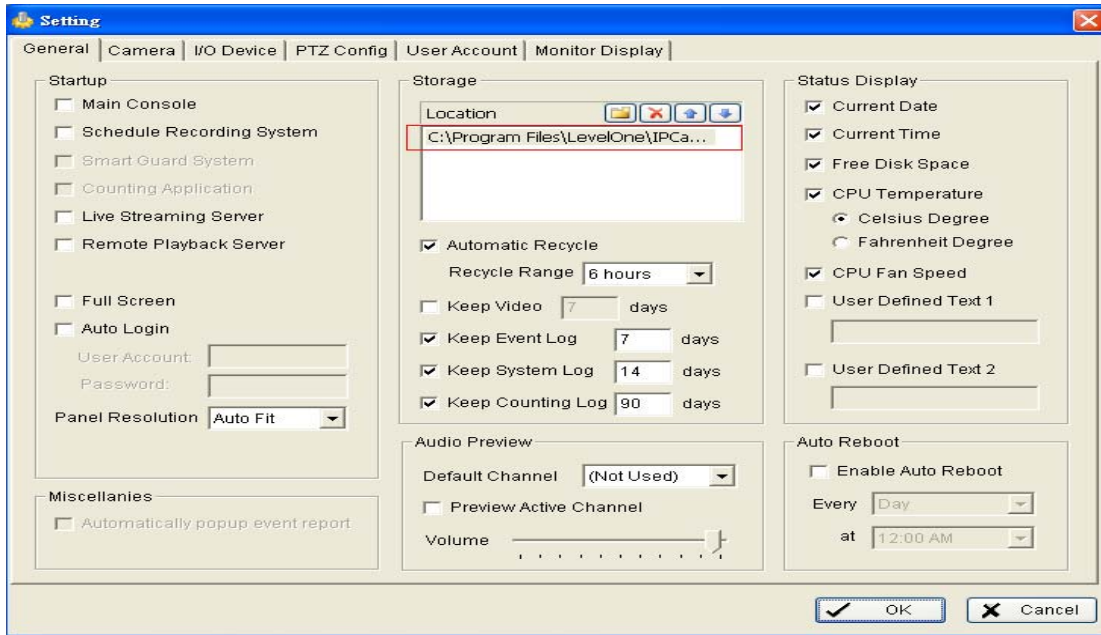
Please launch IP CamSecure > Main Console.

Please confirm your username and password.

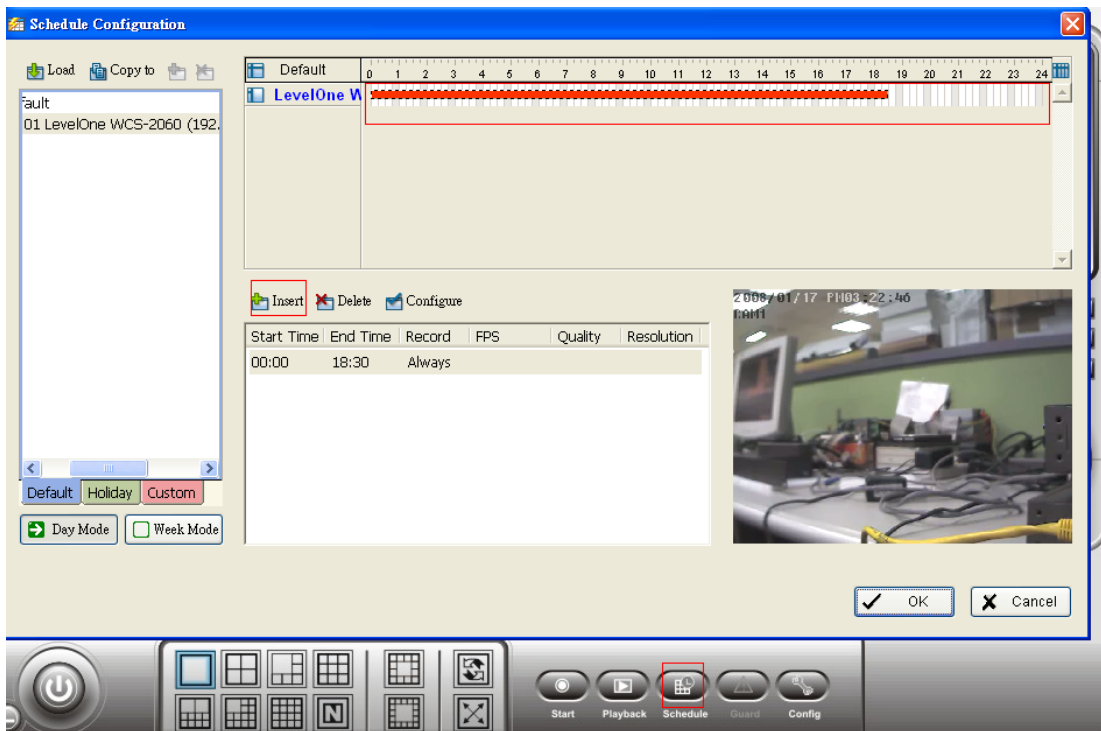


Please adding your cameras first before you process the steps below

2) Choose the path you want to save



3) Press the Schedule to set the time you want to record



4) After start recording, you will see a red spot and logo indicating light

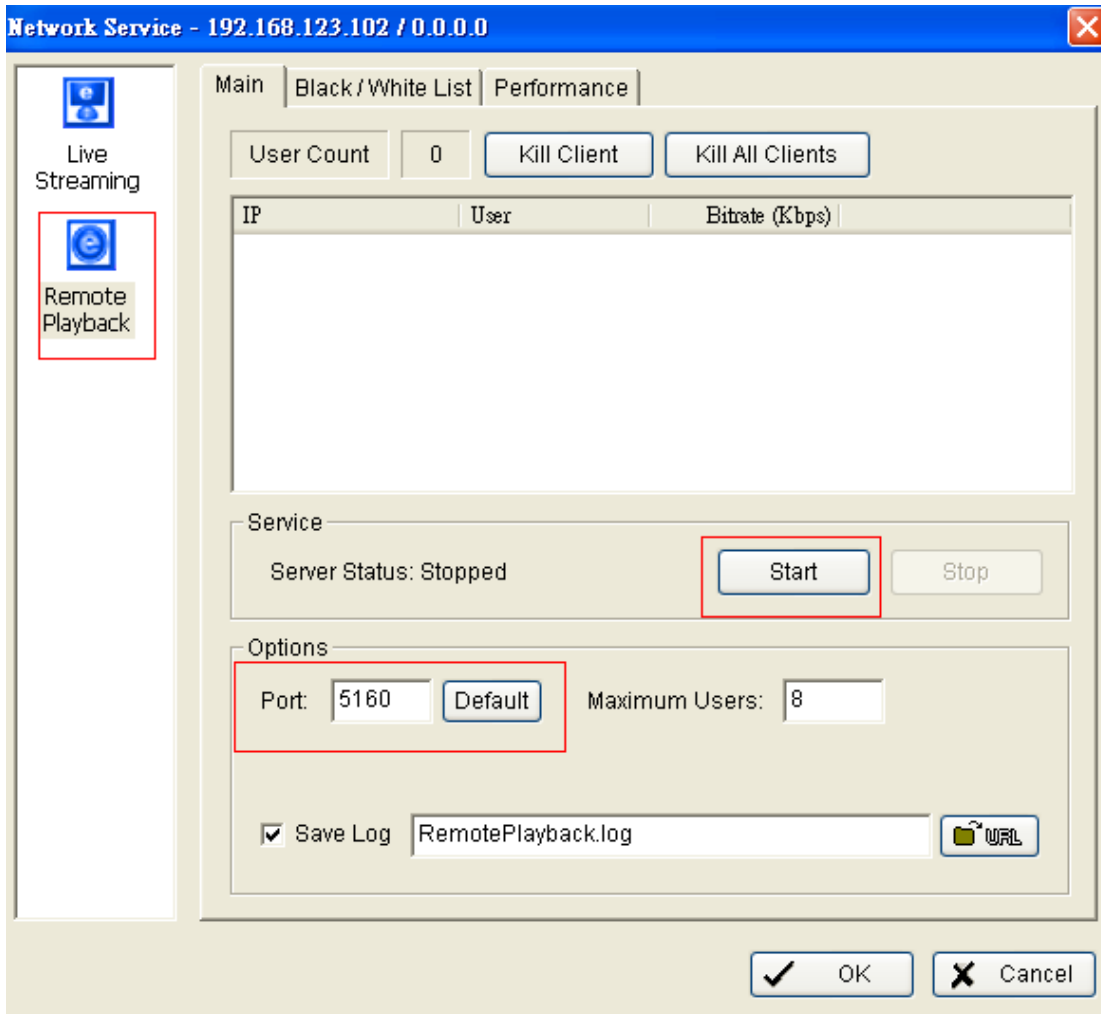


5) Please click Config > Network Service



6) Please refer to the picture below for playback setting. Make sure the port is not used for another device

Press Start the OK to finish setting

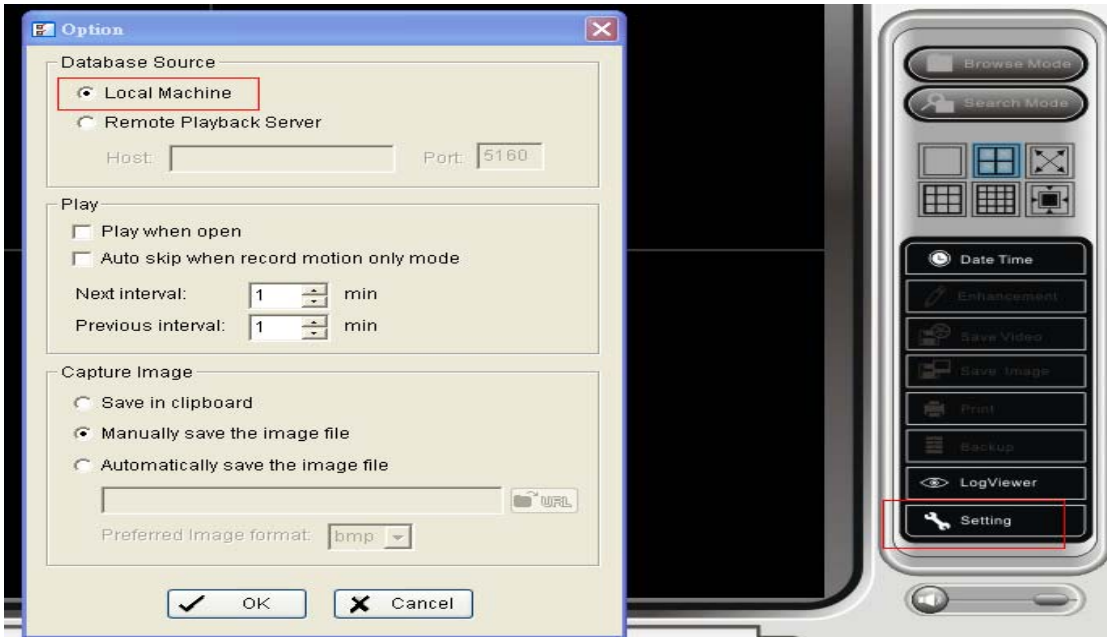


2. Playback on local machine

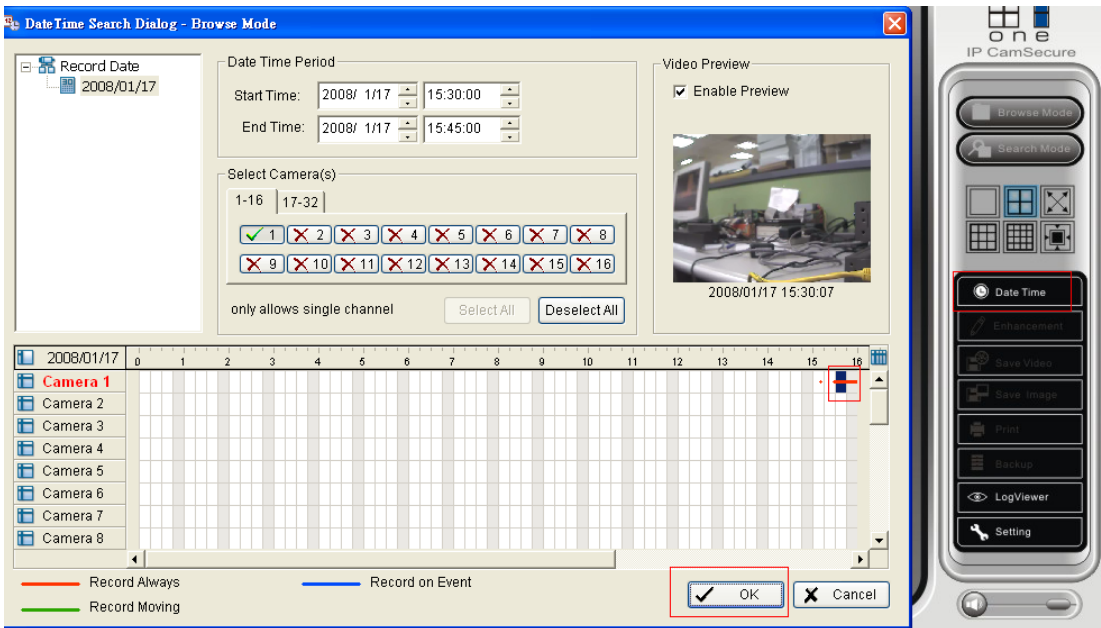
- 1) Please press Playback



- 2) Press Setting then check local machine from Database Source



3) Click Data Time to choose your playback time.



4) Local Machine Playback setting successful.

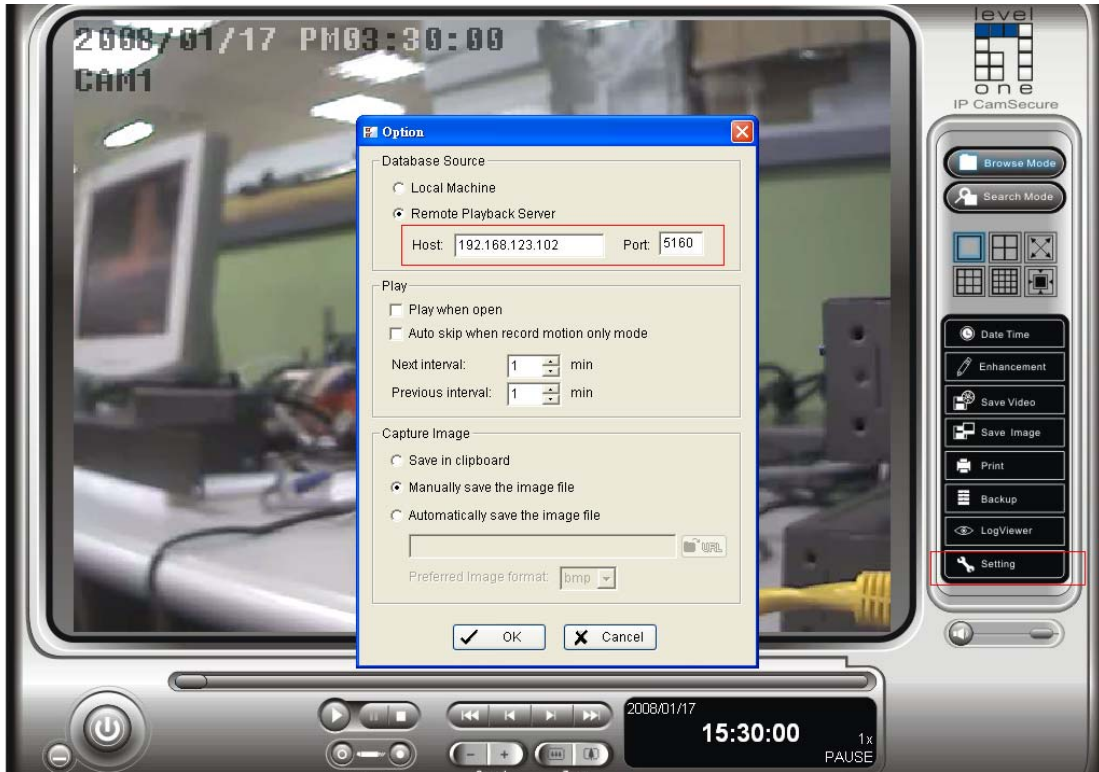


3. Remote Playback Server

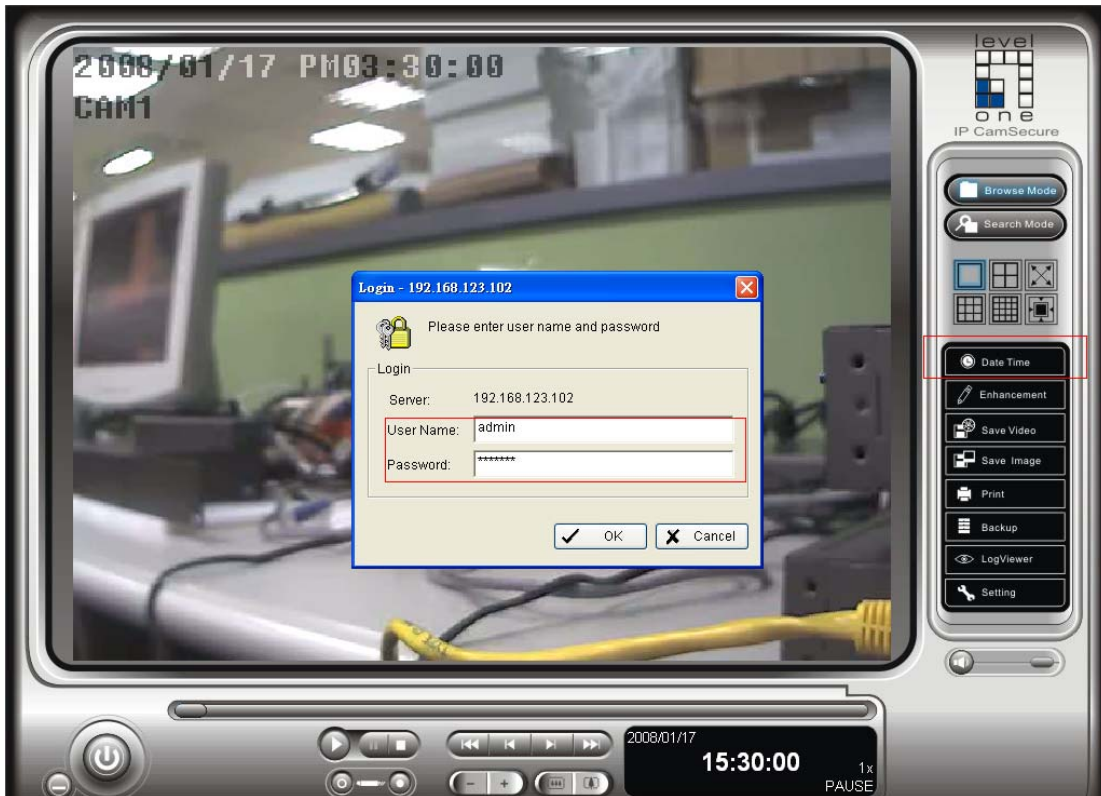
- 1) Please press Playback



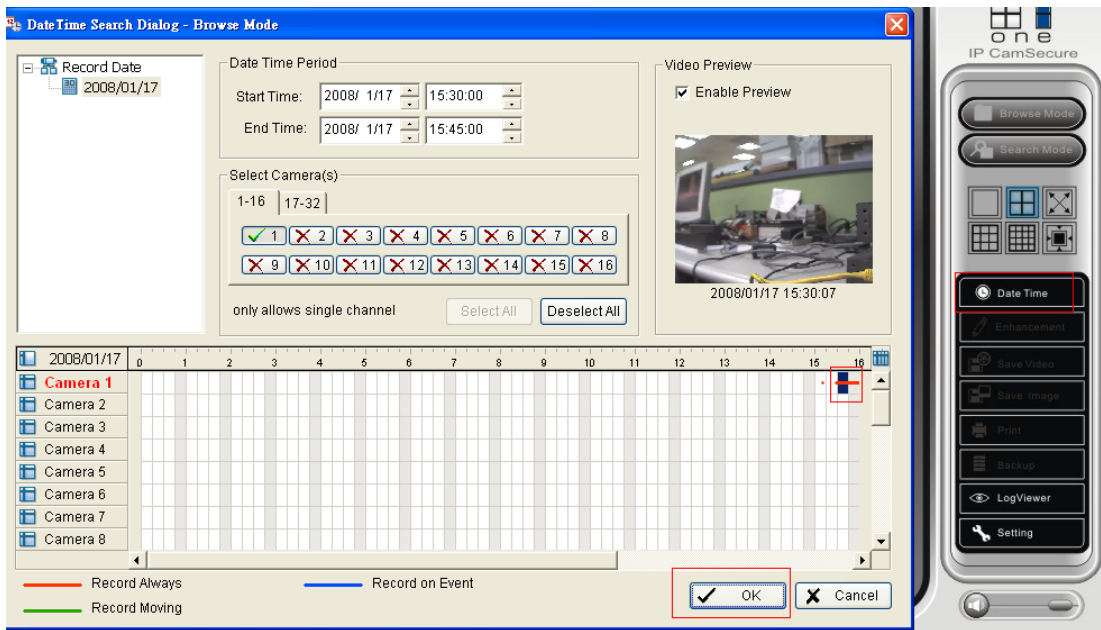
- 2) Press Setting then check Remote Playback Server from Database Source
Please fill out your local machine IP and Port



3) Press Date time and fill out UserName and Password of IP CamSecure



4) Click Data Time to choose your playback time.



5) Remote Playback Server setting successful.

