



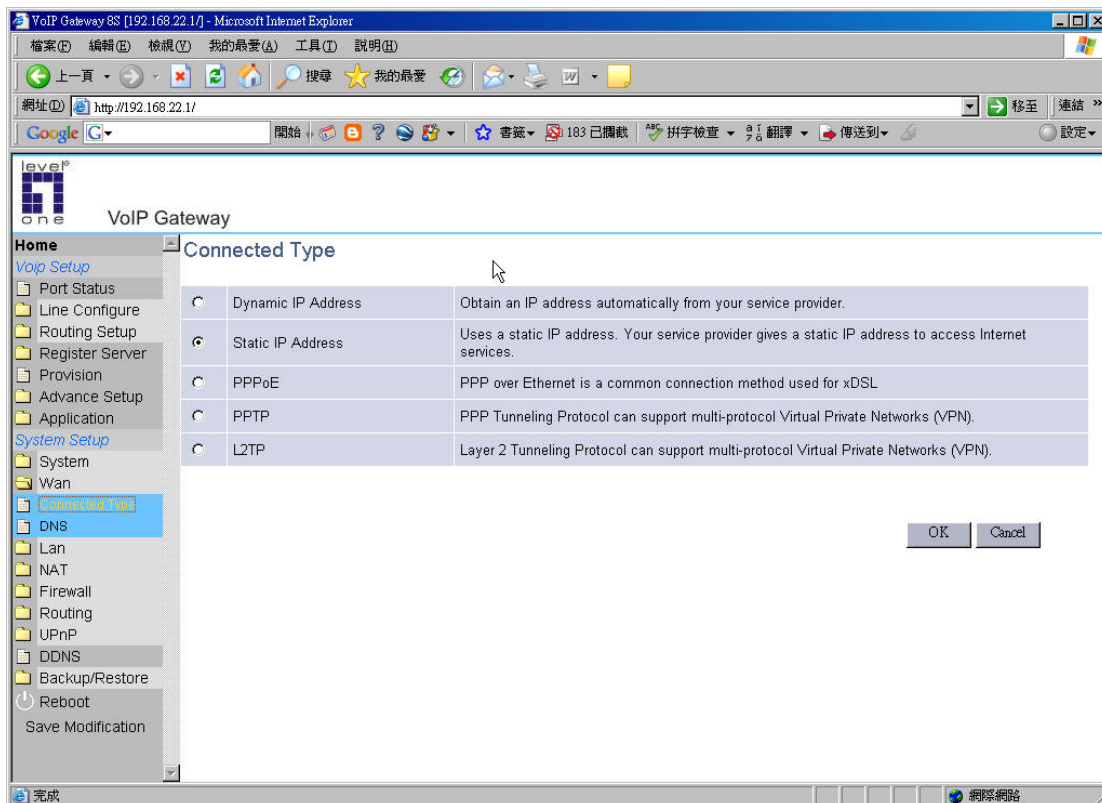
## How to make VOI-800x call to VOI-800x by Hotline

This document applies to VOI-8001, VOI-8002 and VOI-8003.

The Topology of 2 VOI-800x setup.



1. Please configure the WAN port of your VOI-800x first.



2. Please configure VOI-8001 as below.

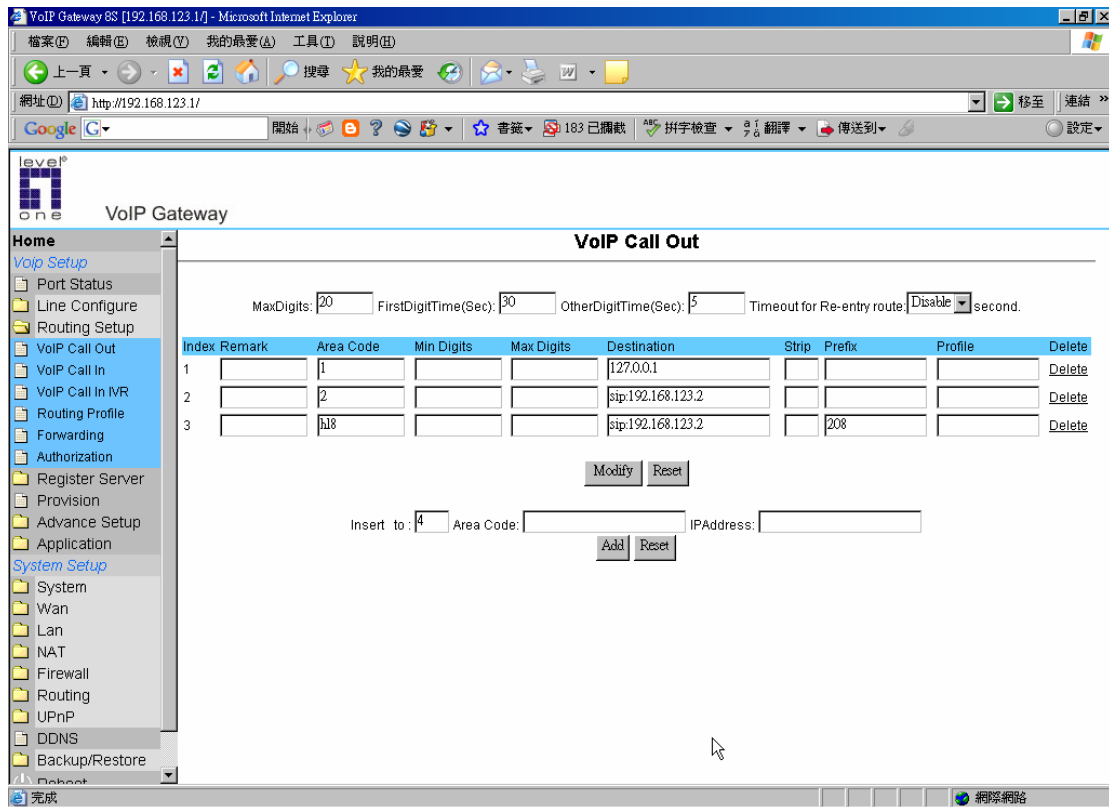
“Area Code” means which destination IP to dial to.

“Destination” means the remote VOI-800x IP address. Please specify to use SIP by putting sip: in front of IP address or h.323 by putting h323: in front of IP

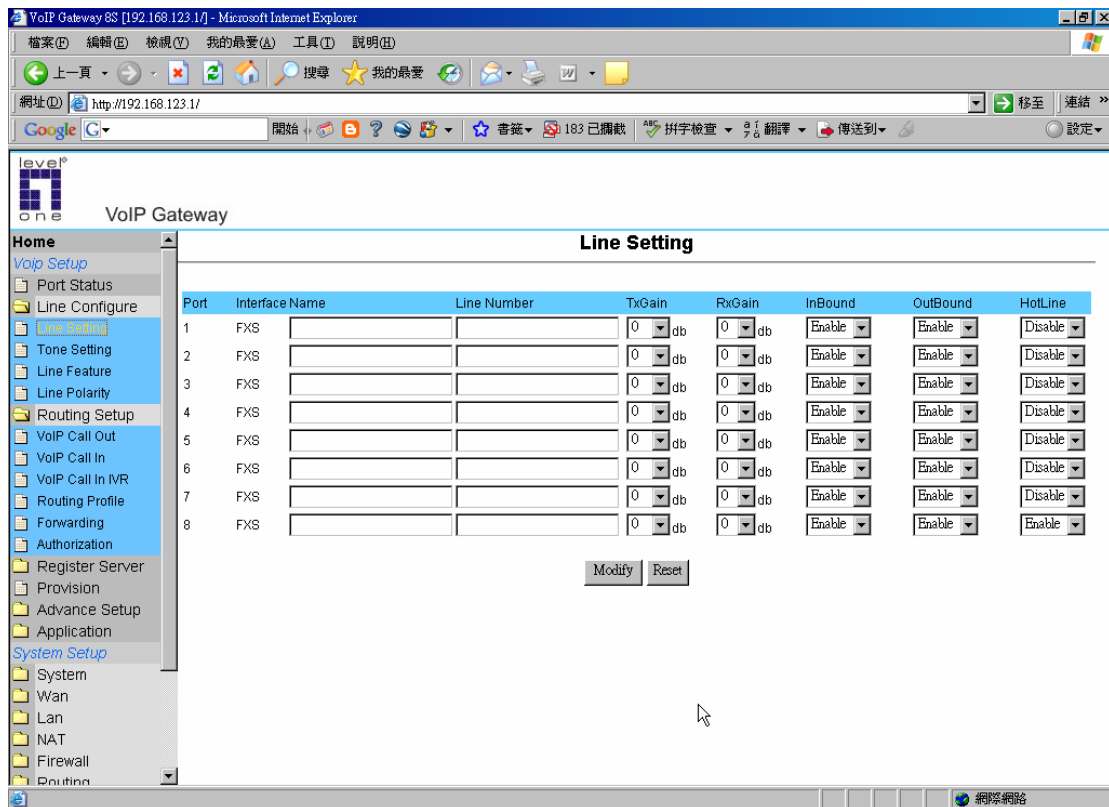
address.

For example, if you dial “1”, the destination will be 127.0.0.1 which is the local port on VOI-8001. If you dial “2” which will reach 192.168.123.2 by SIP protocol.

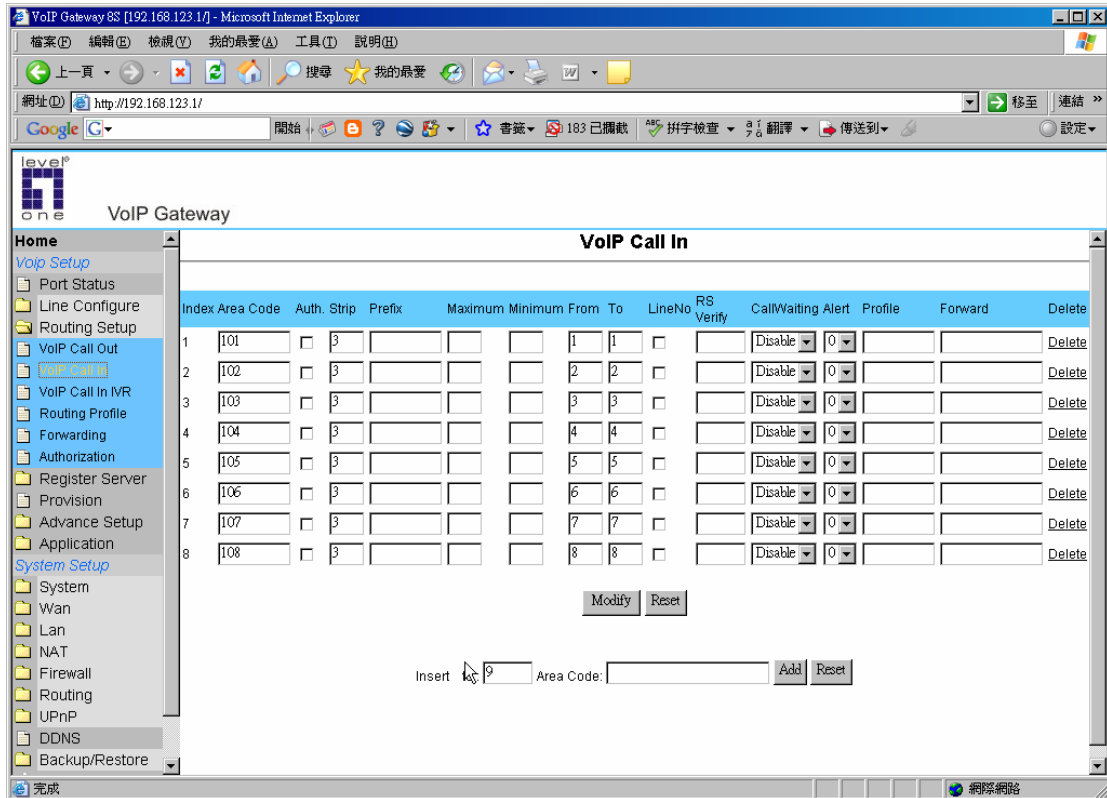
“hl8” is area code is short for Hotline port 8. It means once Port 8 unhook, it will automatically dial to 192.168.123.2 by SIP protocol and ring number 208.



3. Please configure the port you want to use for hotline. In this case, we configure Port 8 of VOI-8001.



- “Area code” represents the number assigned on each port.  
 “Strip” means the 3 digits will be removed.  
 “From” and “to” means the port will be ringed.

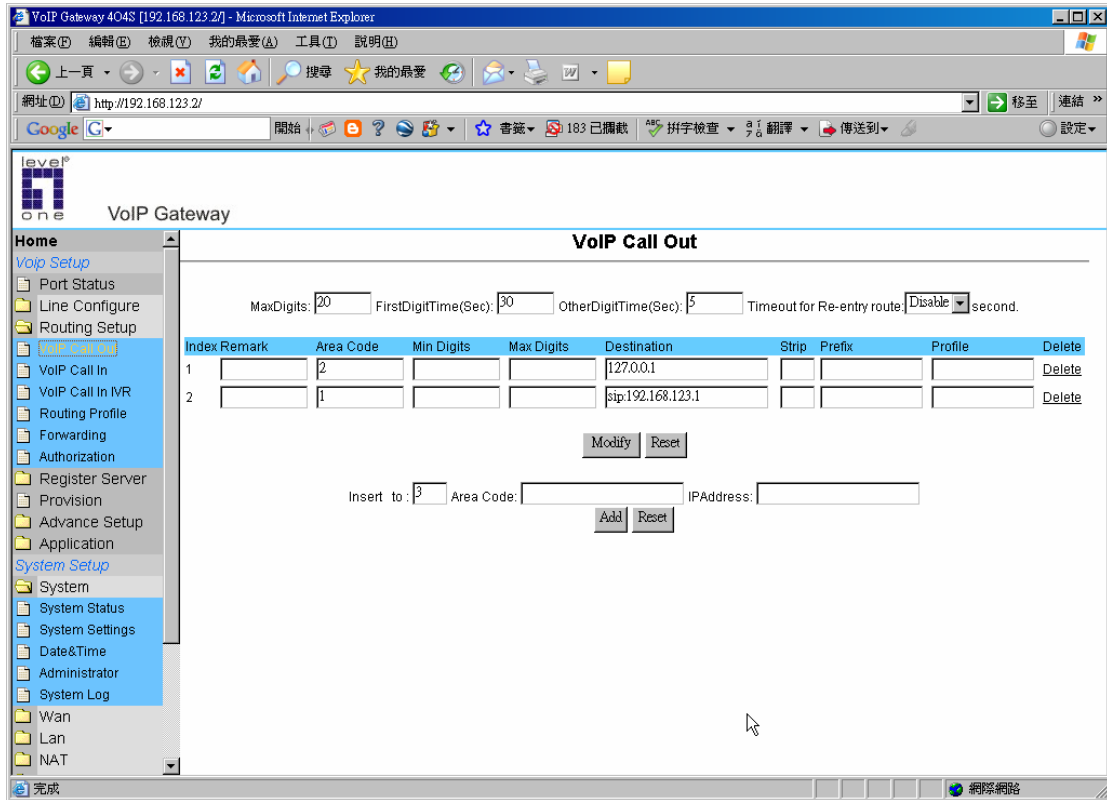


5. Please configure VOI-8003 as below.

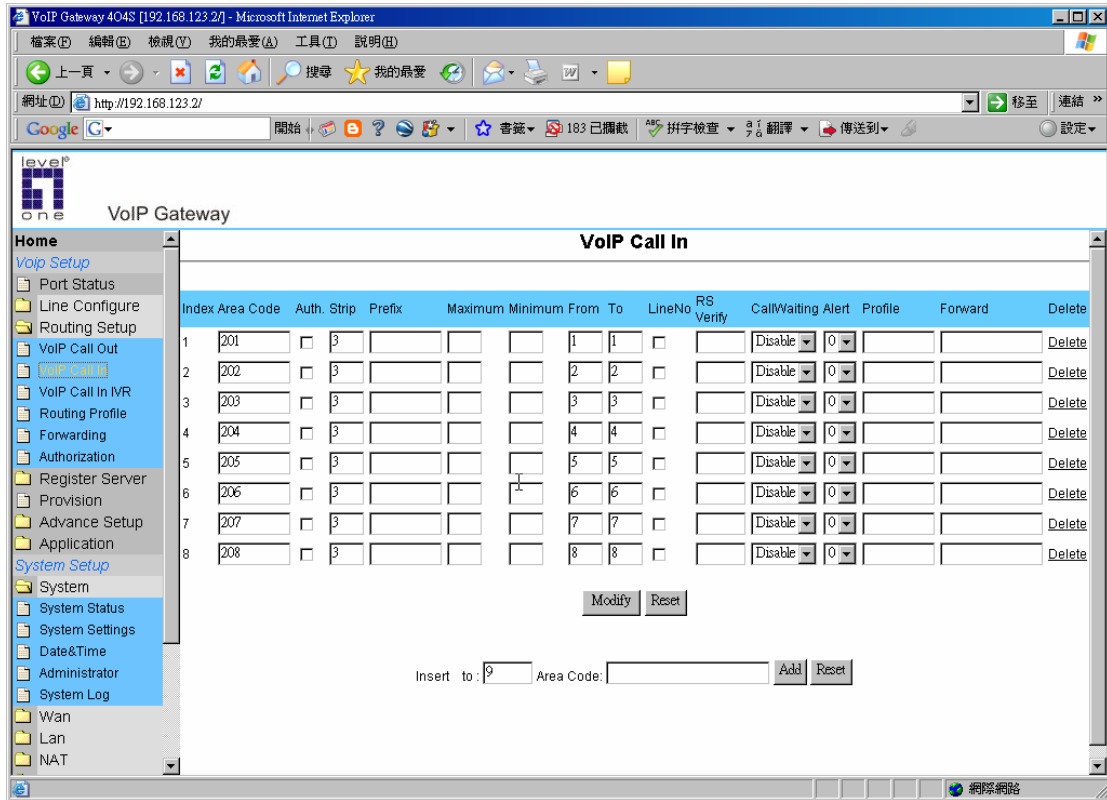
“Area Code” means which destination IP to dial to.

“Destination” means the remote VOI-800x IP address. Please specify to use SIP by putting sip: in front of IP address or h.323 by putting h323: in front of IP address.

For example, if you dial “2”, the destination will be 127.0.0.1 which is the local port on VOI-8003. If you dial “1” which will reach 192.168.123.1 by SIP protocol.



- “Area code” represents the number assigned on each port.  
 “Strip” means the 3 digits will be removed.  
 “From” and “to” means the port will be ringed.



7. You can unhook the phone on port 8 of VOI-8001 and it will automatically ring VOI-8003's port 8.
8. Please do not forget to "Save Modification" before reboot or power off.

VoIP Gateway 8S [192.168.22.1] - Microsoft Internet Explorer

檔案(F) 編輯(E) 檢視(V) 我的最愛(A) 工具(T) 說明(H)

網址(1) http://192.168.22.1/

Google

level one VoIP Gateway

- Routing Setup
  - VoIP Call Out
  - VoIP Call In
  - VoIP Call In IVR
  - Routing Profile
  - Forwarding
  - Authorization
- Register Server
  - Provision
  - Advance Setup
  - Application
- System Setup
  - System
  - Wan
  - Lan
  - NAT
  - Firewall
  - Routing
  - UPnP
  - DDNS
  - Backup/Restore
  - Configurations
  - Voip module

Save Modification

### Reboot System

Are you sure you have already [saved modification](#)?  
**Yes, Please click Reboot button!**

Reboot

網路網路