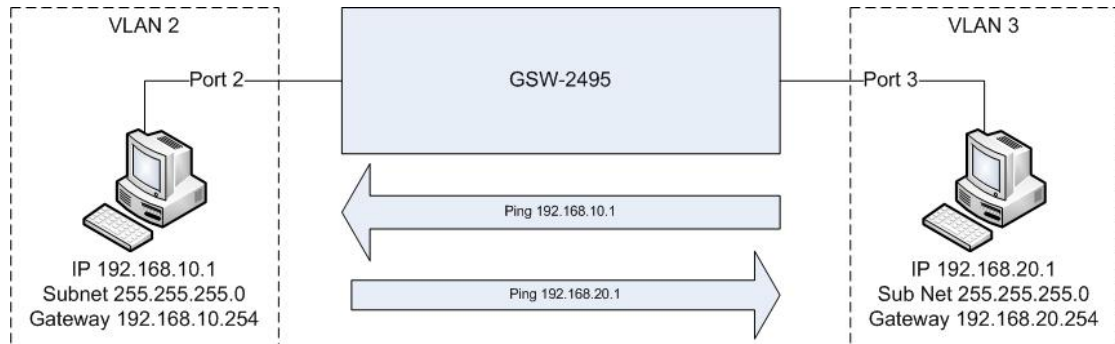


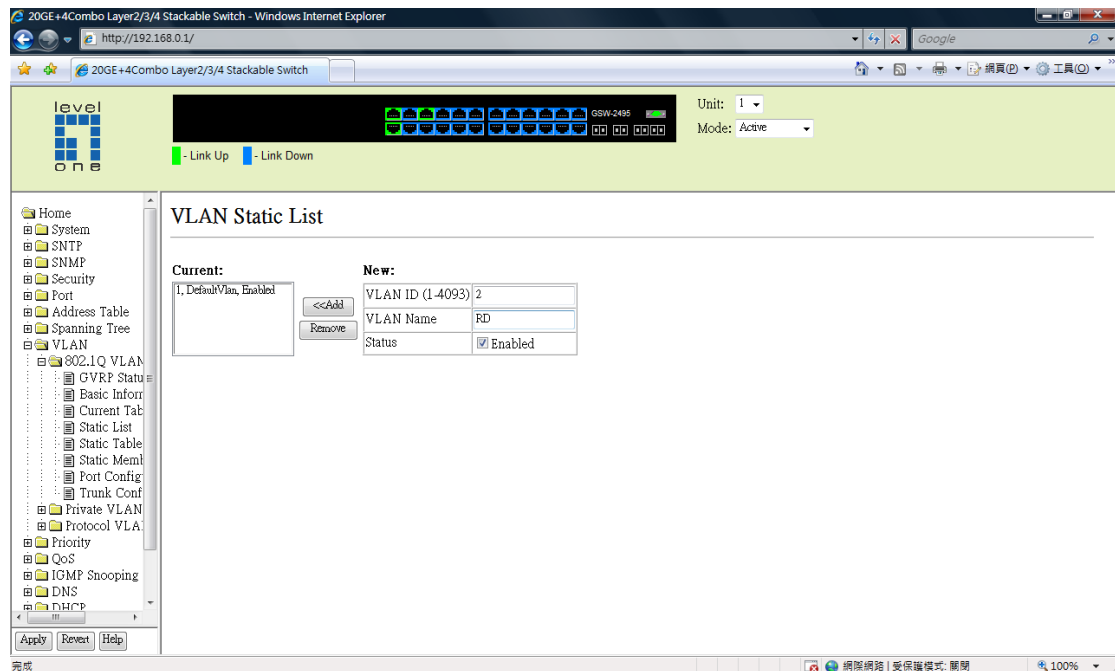
How to configure inter VLAN static routing on GSW-2495 ?

GSW-2595 is a Layer 3 switch, it's capable of doing Inter VLAN routing. In this example, we set up 2 VLANs and each VLAN has different subnet. In the end of configuration, two VLANs will be able to communicate with each other via static route.



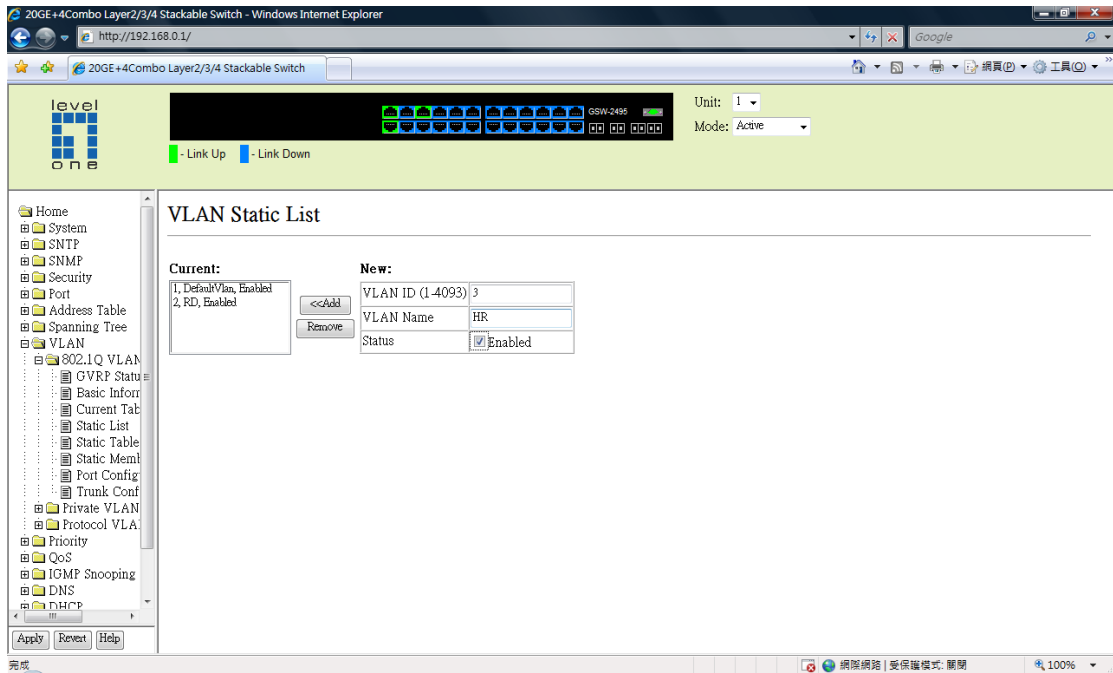
Configure VLAN

1. VLAN – Static list, please create VLAN 2, name your VLAN(in this example RD), and enable the status.

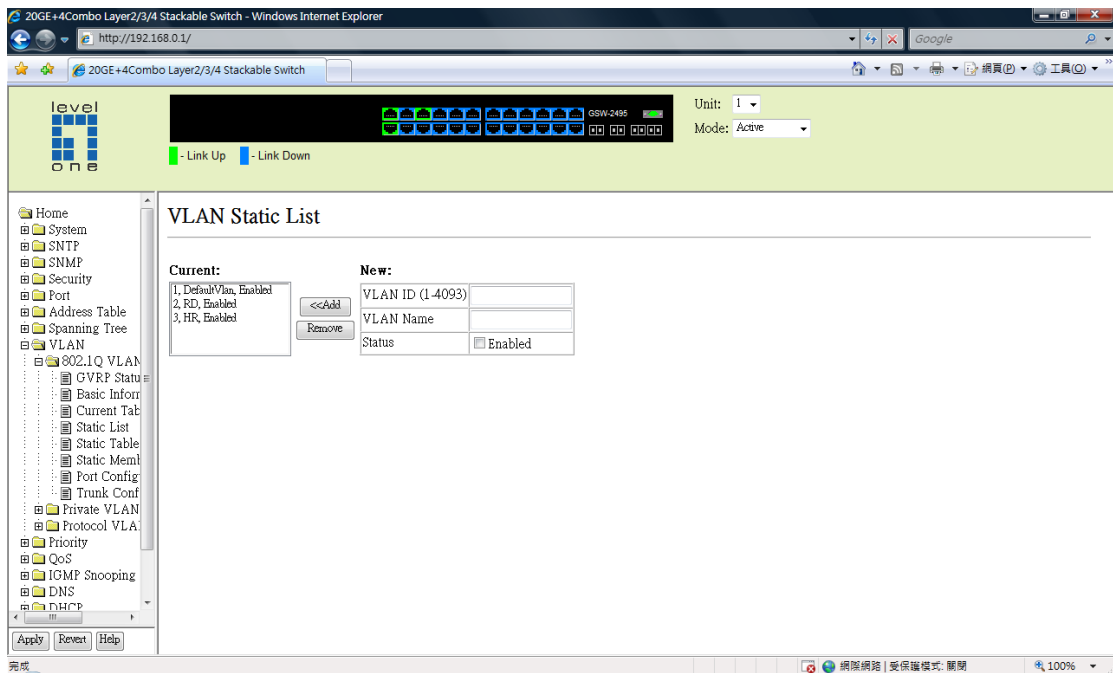


2. VLAN – Static list, please create VLAN 3, name your VLAN(in this example HR),

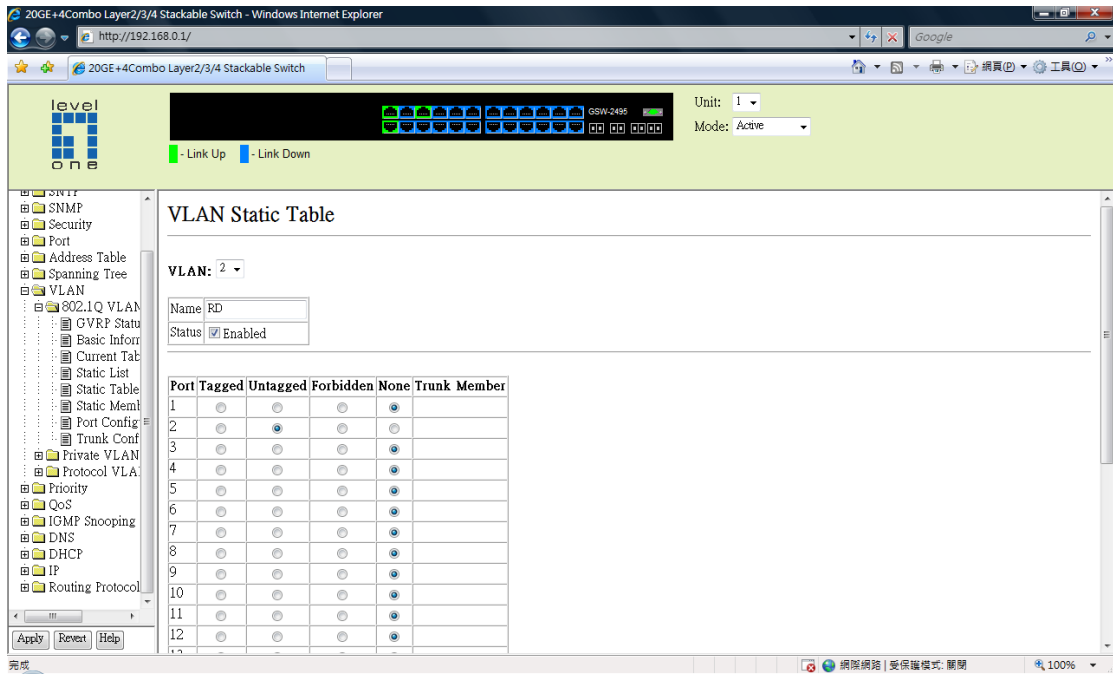
and enable the status.



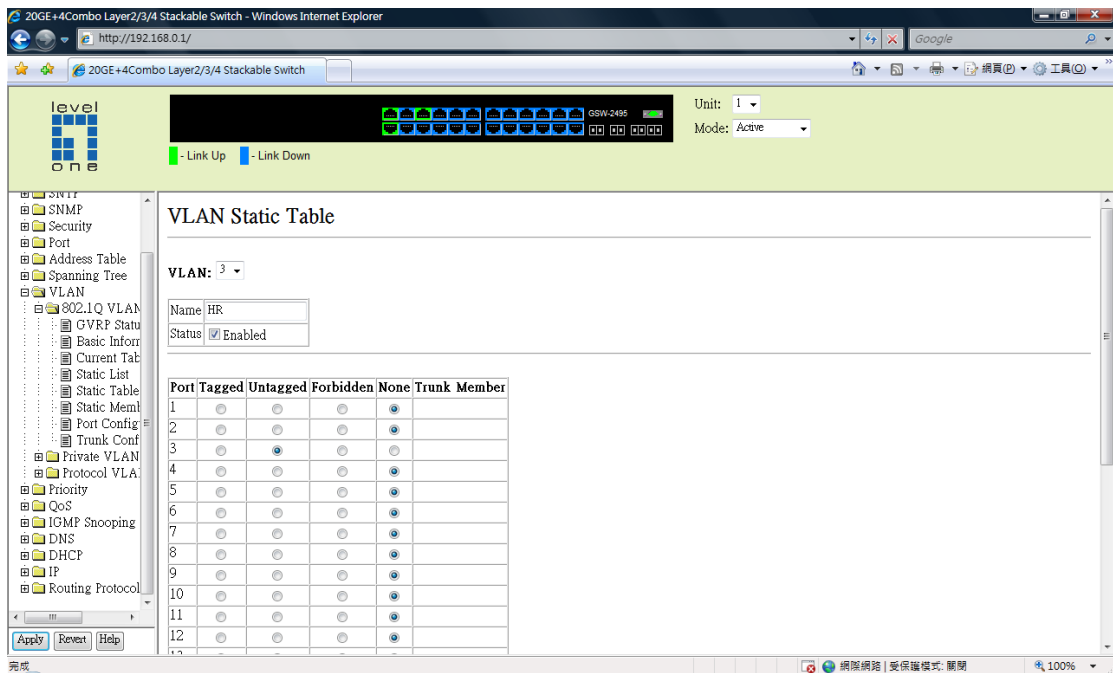
3. VLAN 2 / 3 are being created.



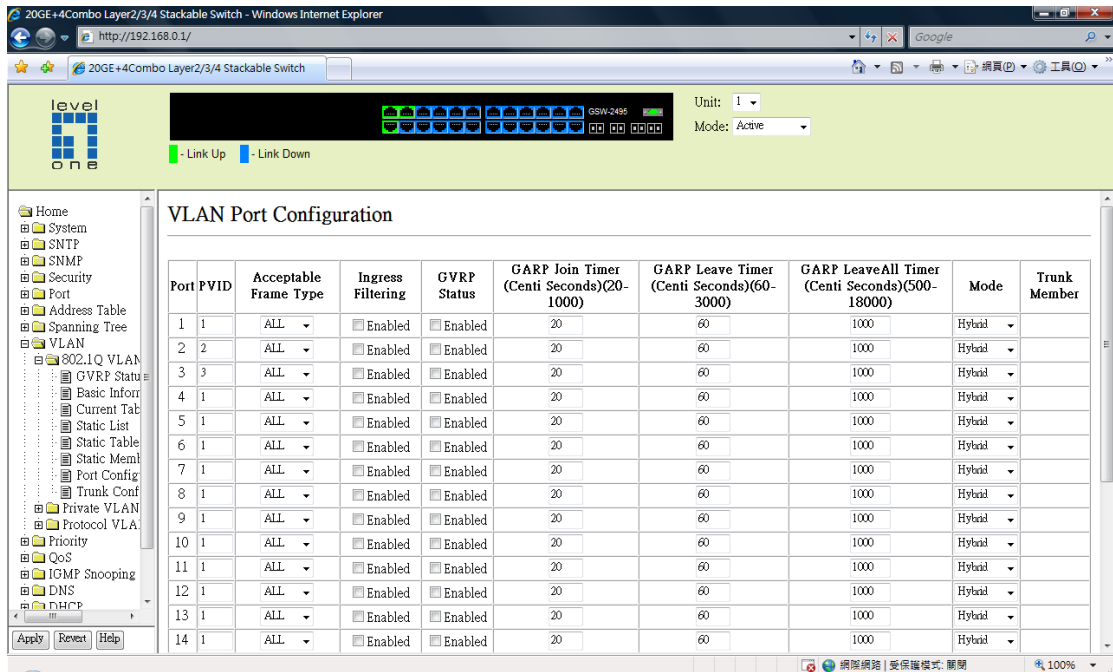
4. VLAN – Static Table, select VLAN 2, tick enable, place VLAN 2 into untagged port.



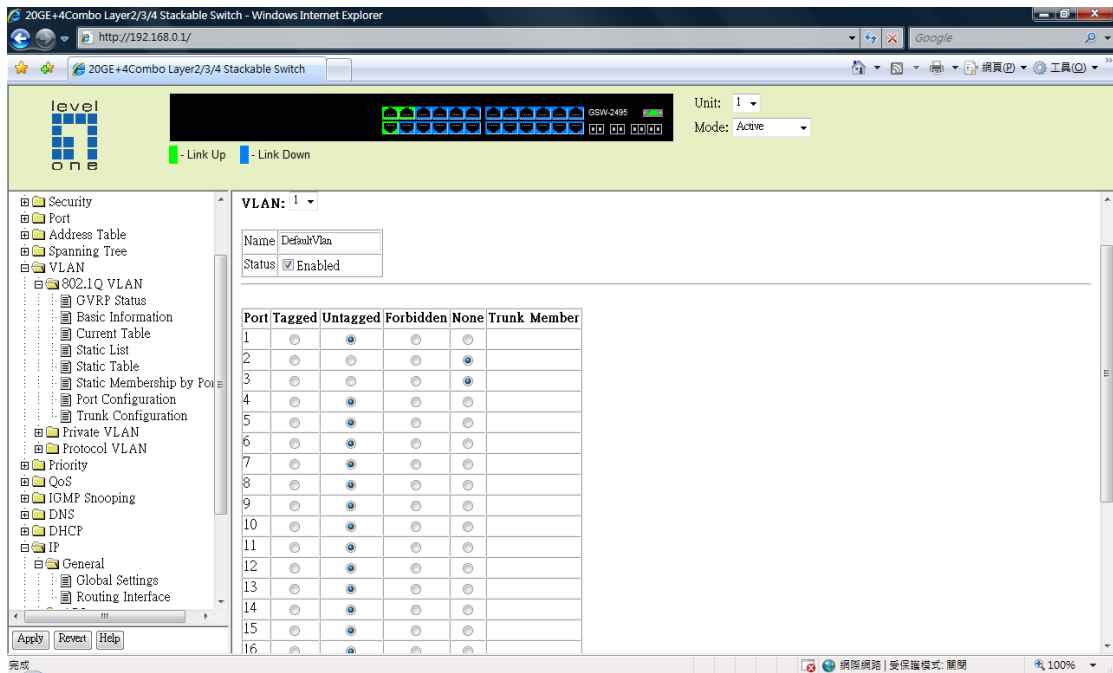
5. VLAN – Static Table, select VLAN 3, tick enable, place VLAN 3 into untagged port.



6. VLAN – Port Configuration, input PVID 2 for Port 2, PVID 3 for port 3.

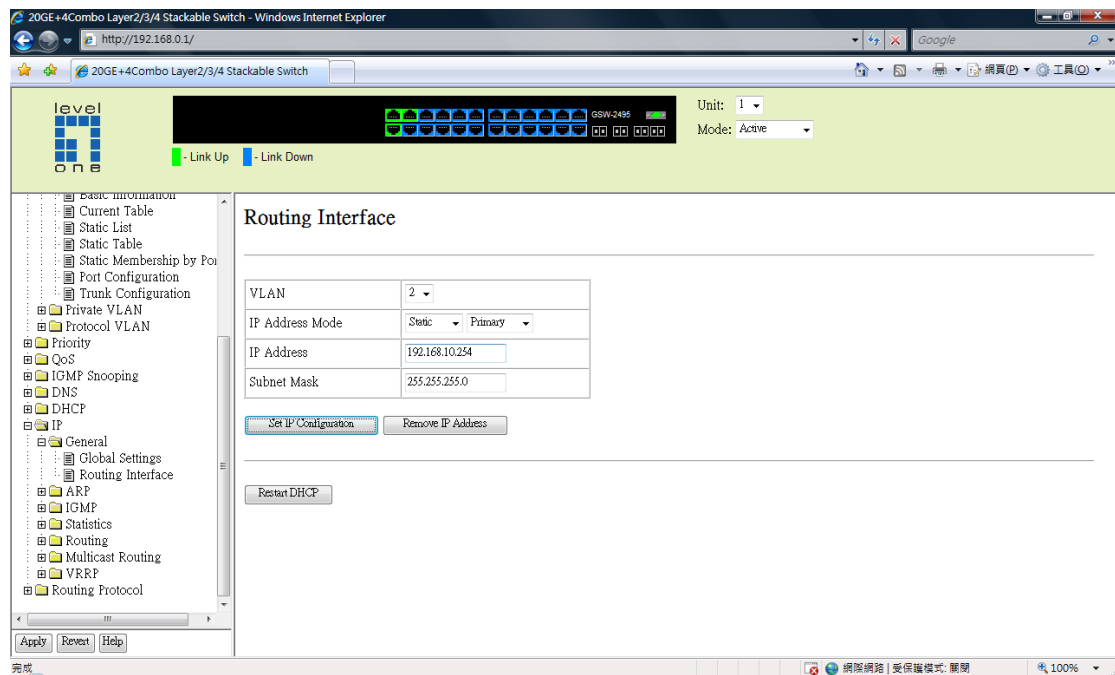


7. VLAN- VLAN Static table, move Port 2 and 3 to none. Port 2 and 3 will be removed from default VLAN 1.

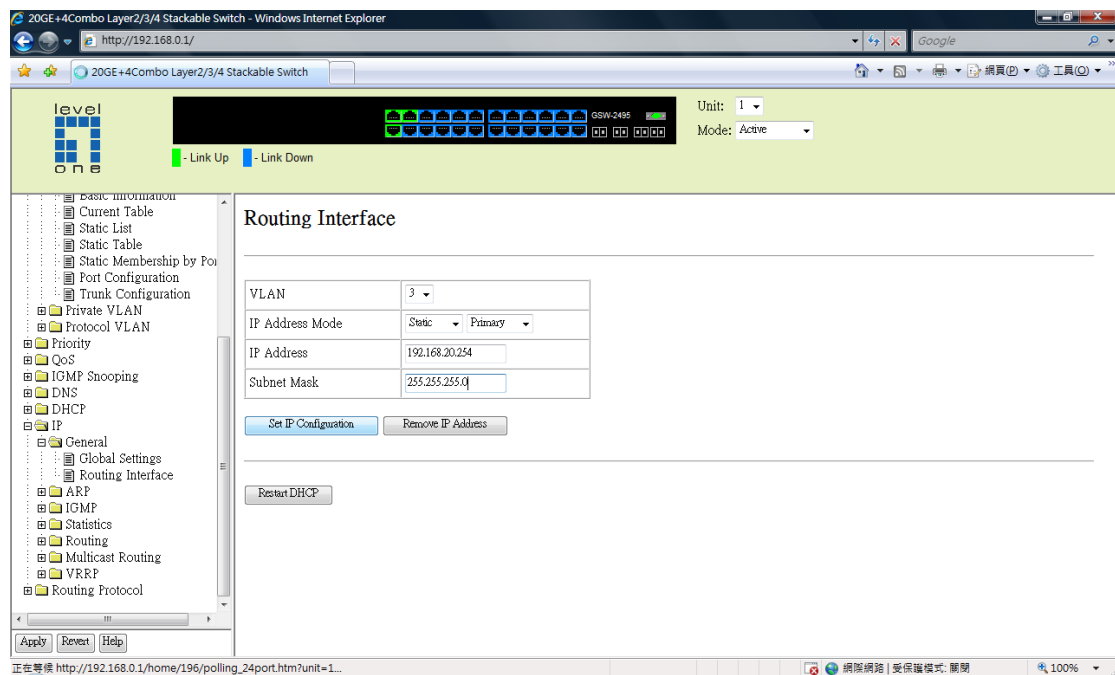


Configure Routing interface

8. IP – Routing Interface, select VLAN 2, enter the IP address 192.168.10.254 with subnet mask 255.255.255.0

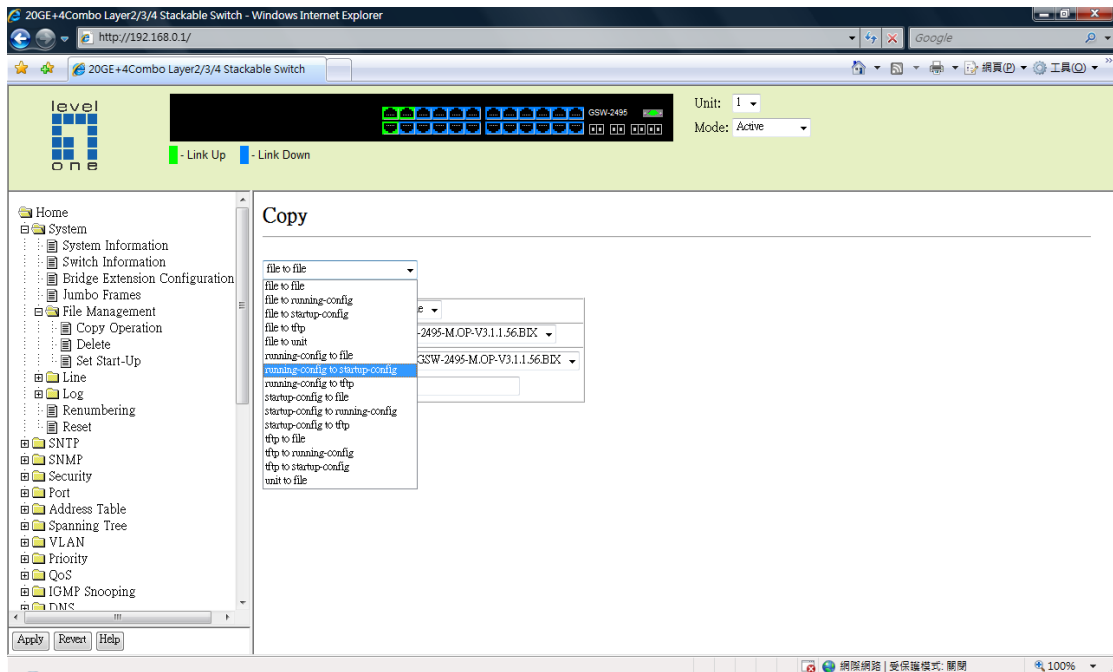


- IP – Routing Interface, select VLAN 3, enter the IP address 192.168.20.254 with subnet mask 255.255.255.0



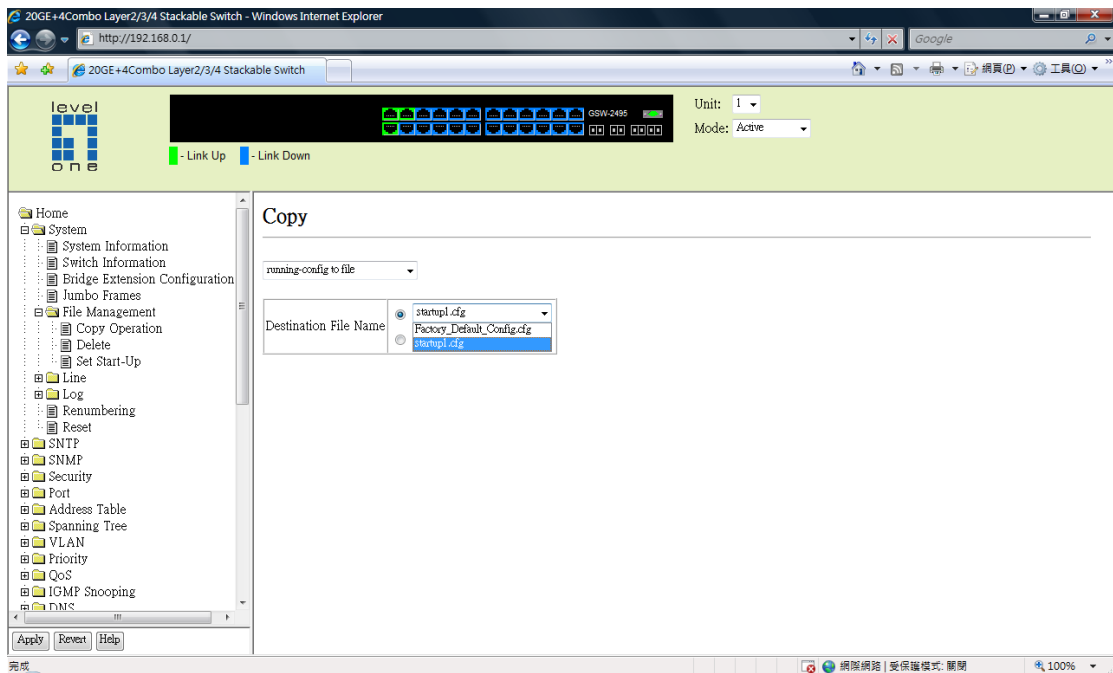
Save configuration

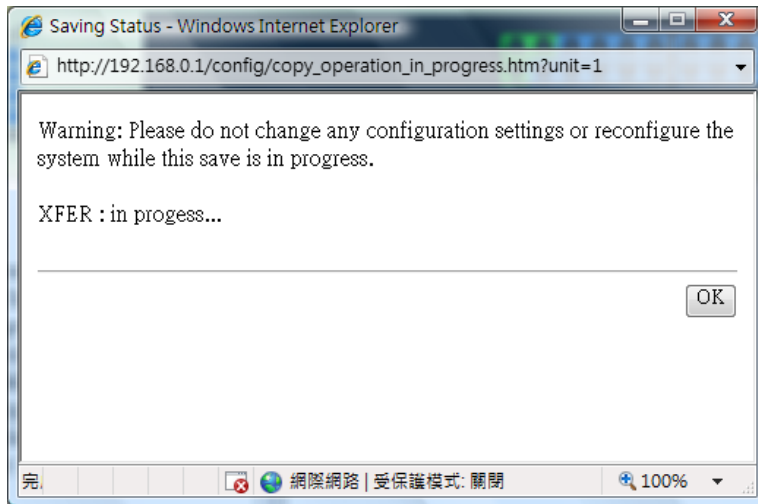
- System – File management – Copy Operation, select running-config to startup-config.



11. Select “startip1.cfg”.

12. Click on “Apply”.





Testing

13. You should be able to ping 192.168.10.1 from 192.168.20.1 and vice versa.