

How to configure IP Cam Secure to backup video ?

Scenario

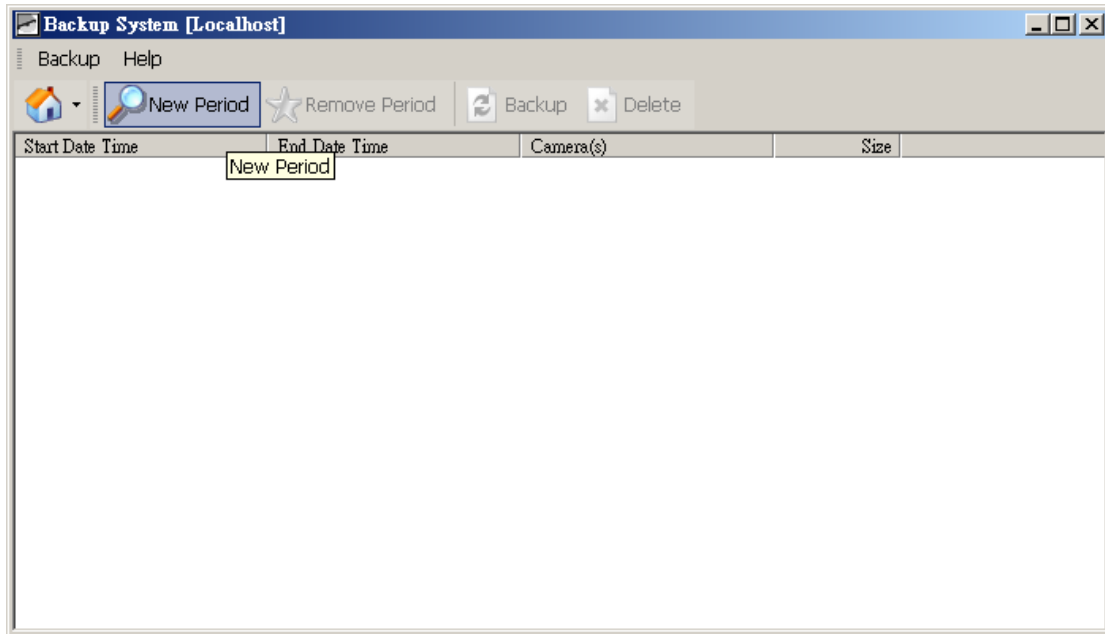
IP Cam Secure can backup any video data and view video via playback.exe which will also be saved in the backup folder.

Please follow those steps to backup your video record:

1.) Go to [Main Console]->[Config]->[Backup]

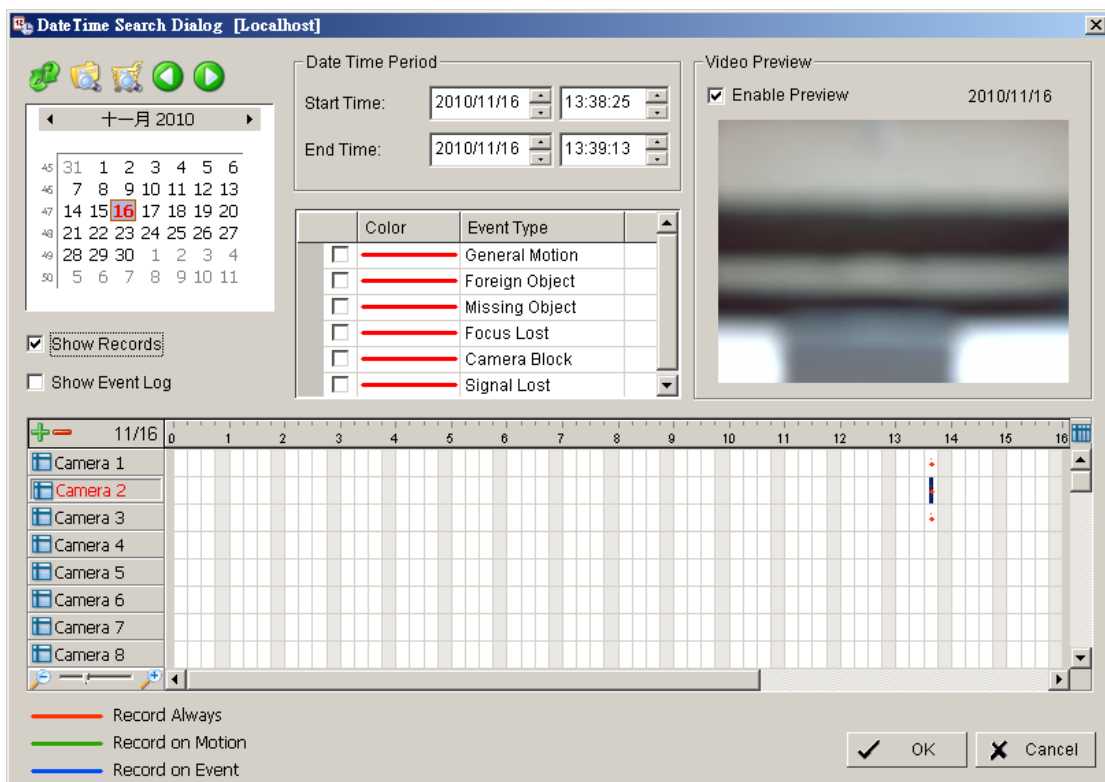


2.) Click on [New Period]

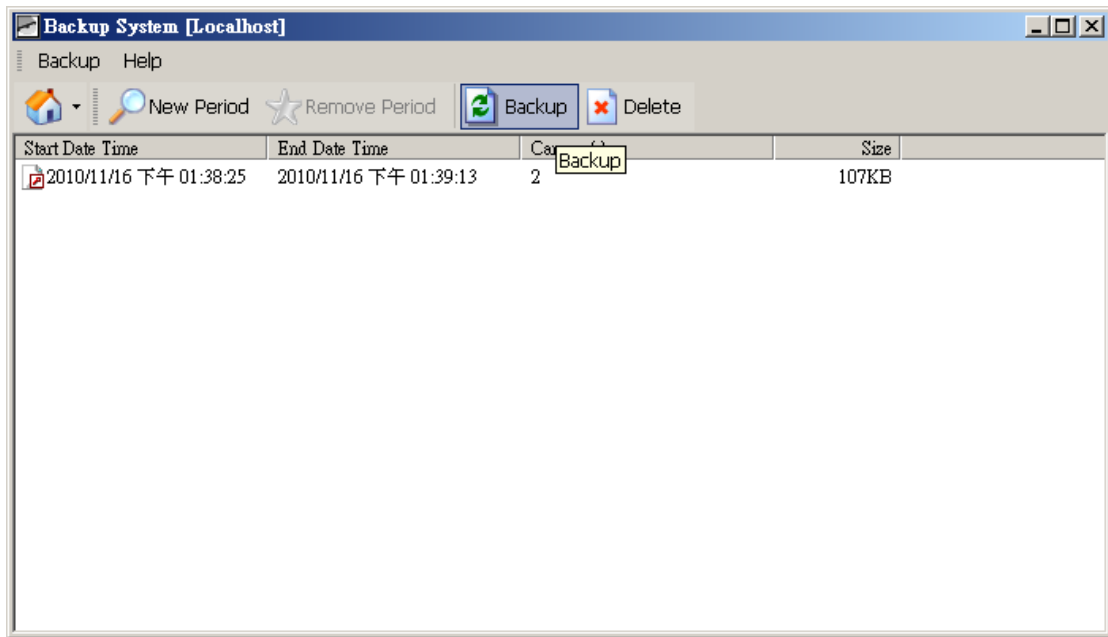


3.) Set start and end time for time period of preferred cameras

4.) Click [OK], and period will show

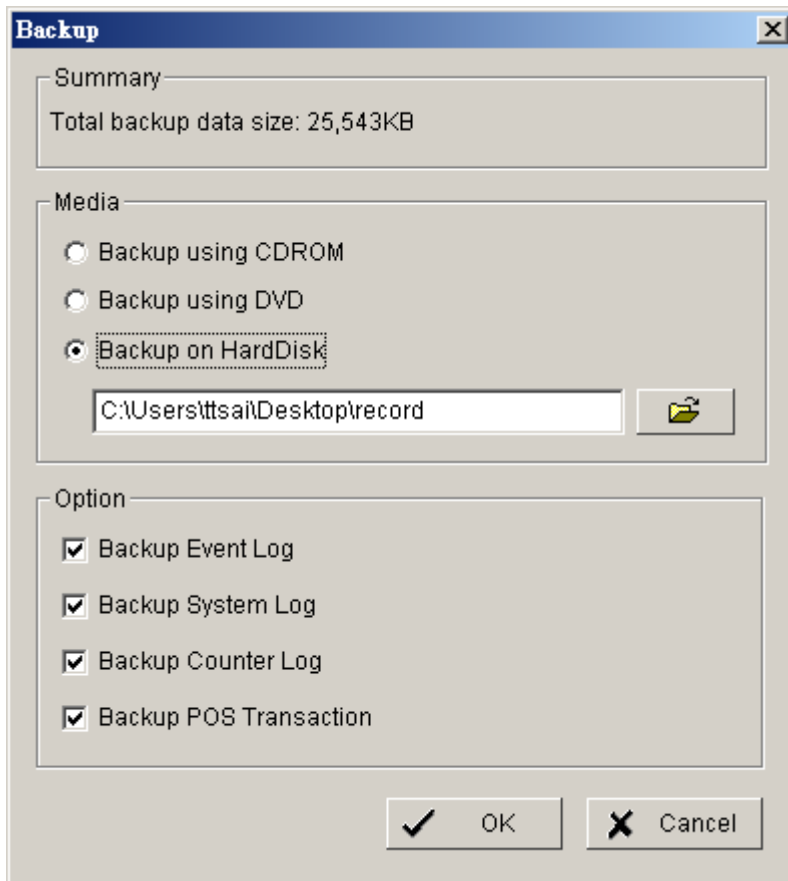


5.) Click [backup]



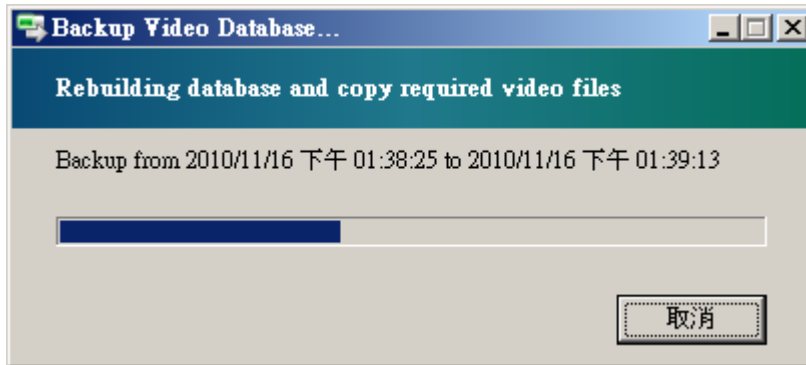
6.) Choose a location to backup media

Note: Multiple files will be generated, open a new folder is recommended.

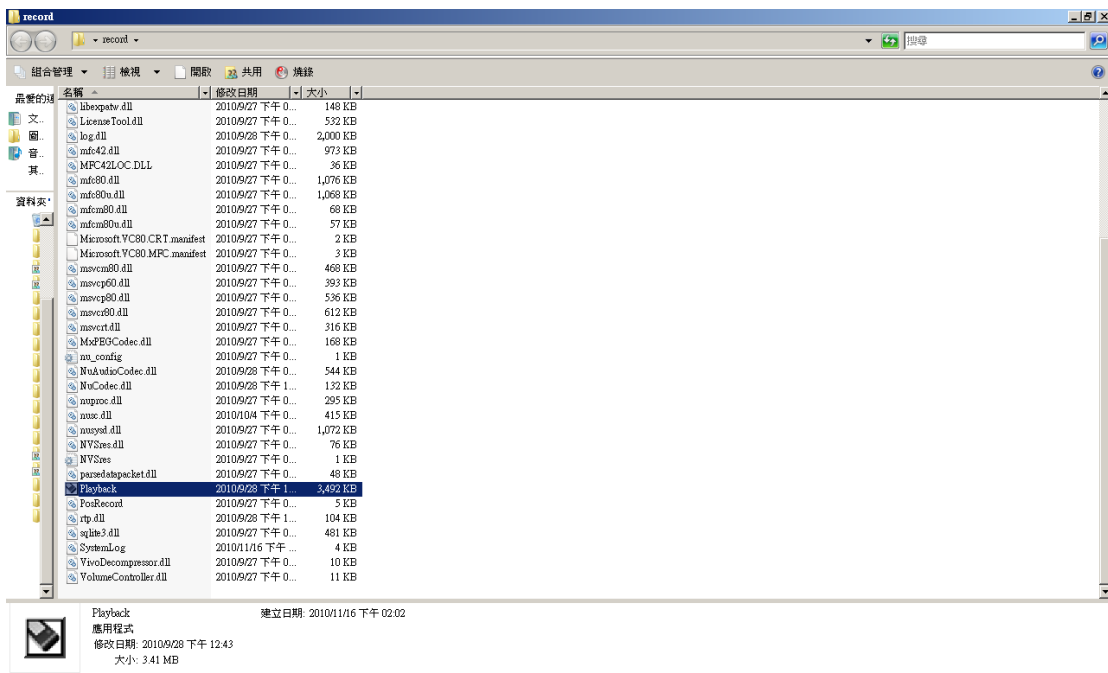


7.) Set option to backup log files.

8.) Click [OK] to execute backup



9.) After backup, you can find playback.exe in the exported folder and use it to review the video evidence



10.) In playback, you can click on [Open record].



11.) Select the period of time to playback, click on [OK].

