

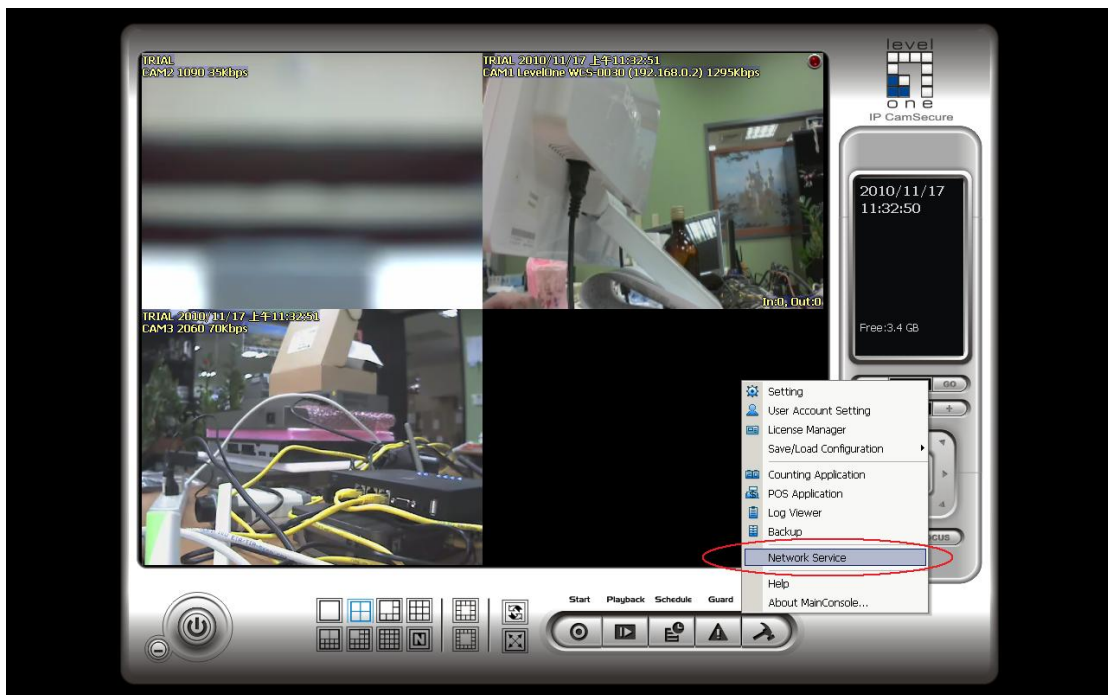
# How to configure IP Cam Secure Remote Playback ?

## Scenario

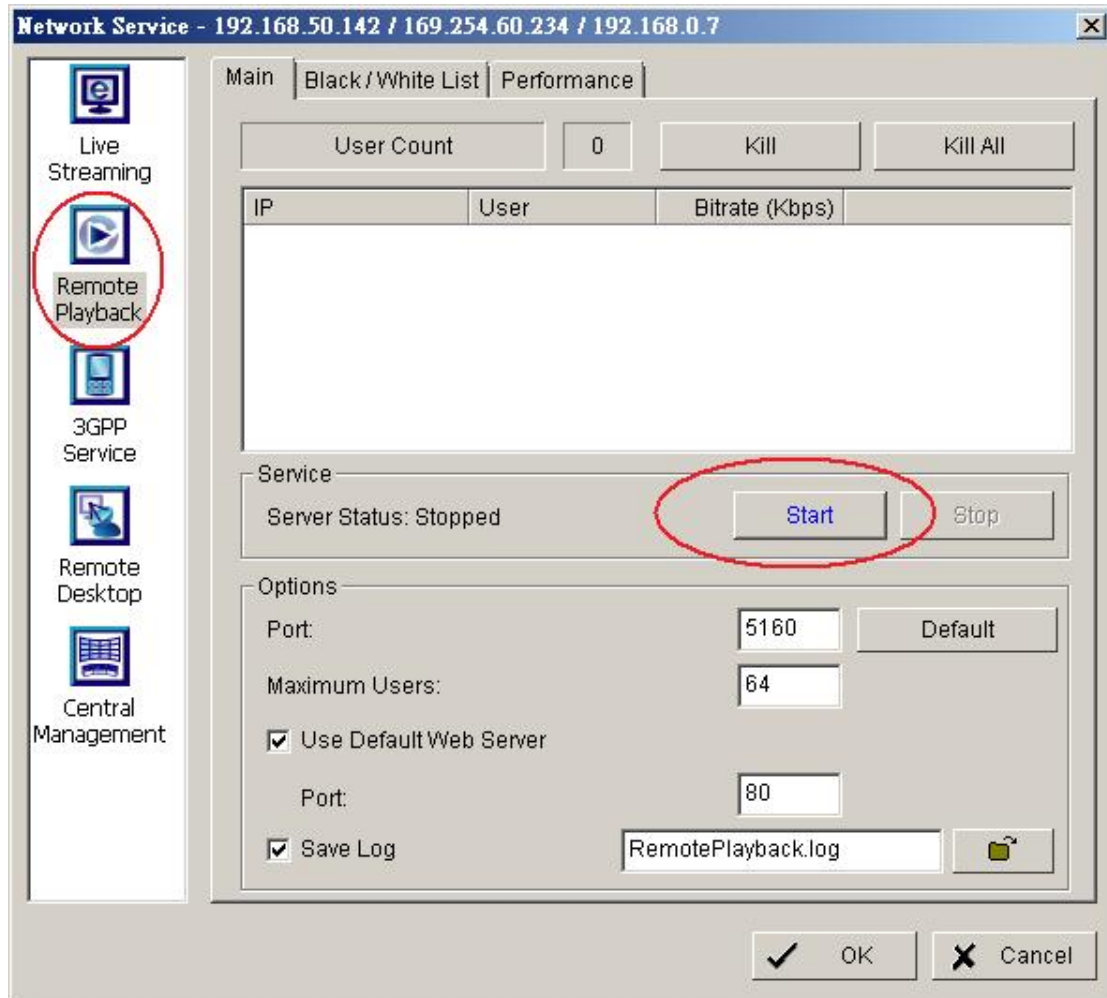
IP Cam Secure support playback video recording remotely using Playback system. For example here, IP Cam Secure recording stored on 192.168.0.7 can be playback on Playback system runs on 192.168.0.10.

### A. Enable Remote Playback server

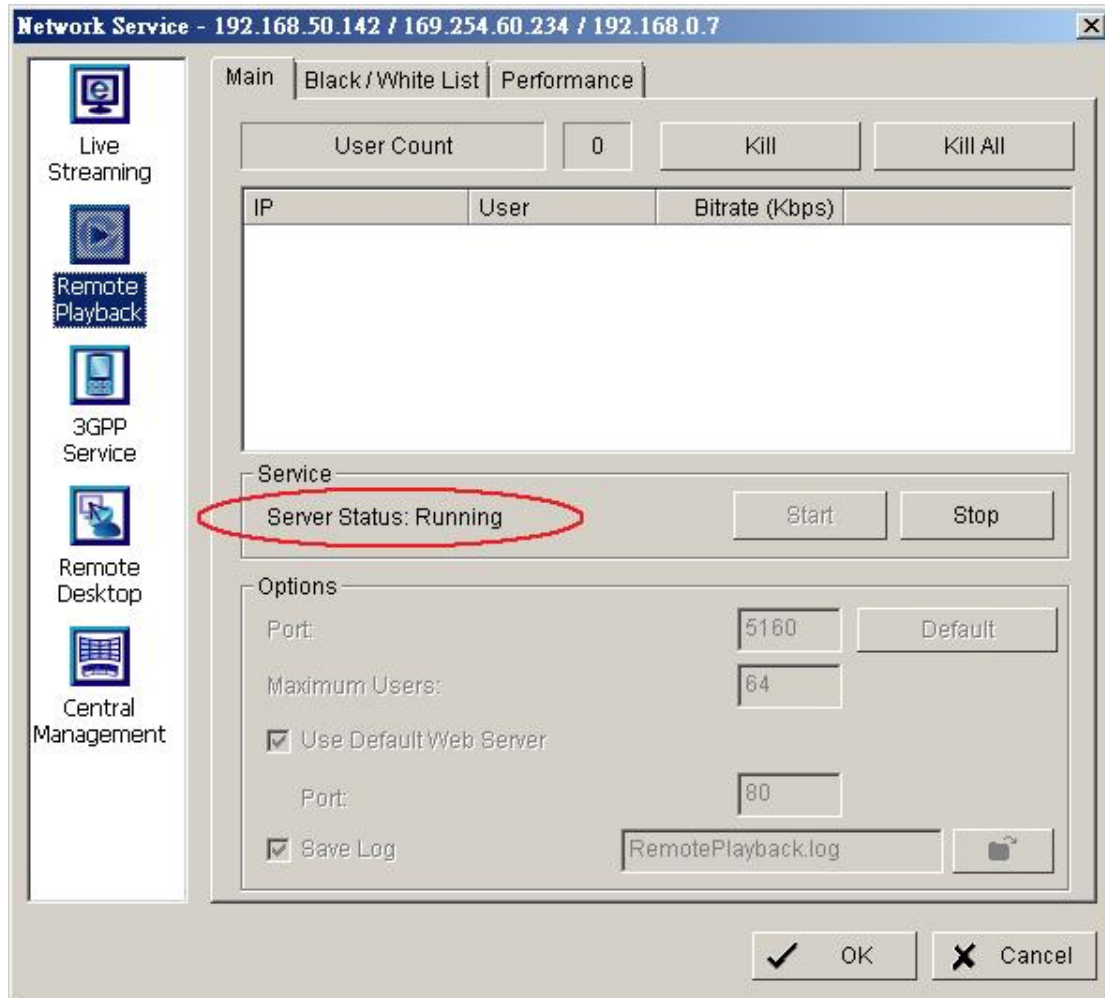
1. [Config] → [Network Service]



2. In the Remote Playback tab, click on "Start".



3. Please make sure the Server status is "Running" before click on OK to exit.



B. Configure the remote playback computer.

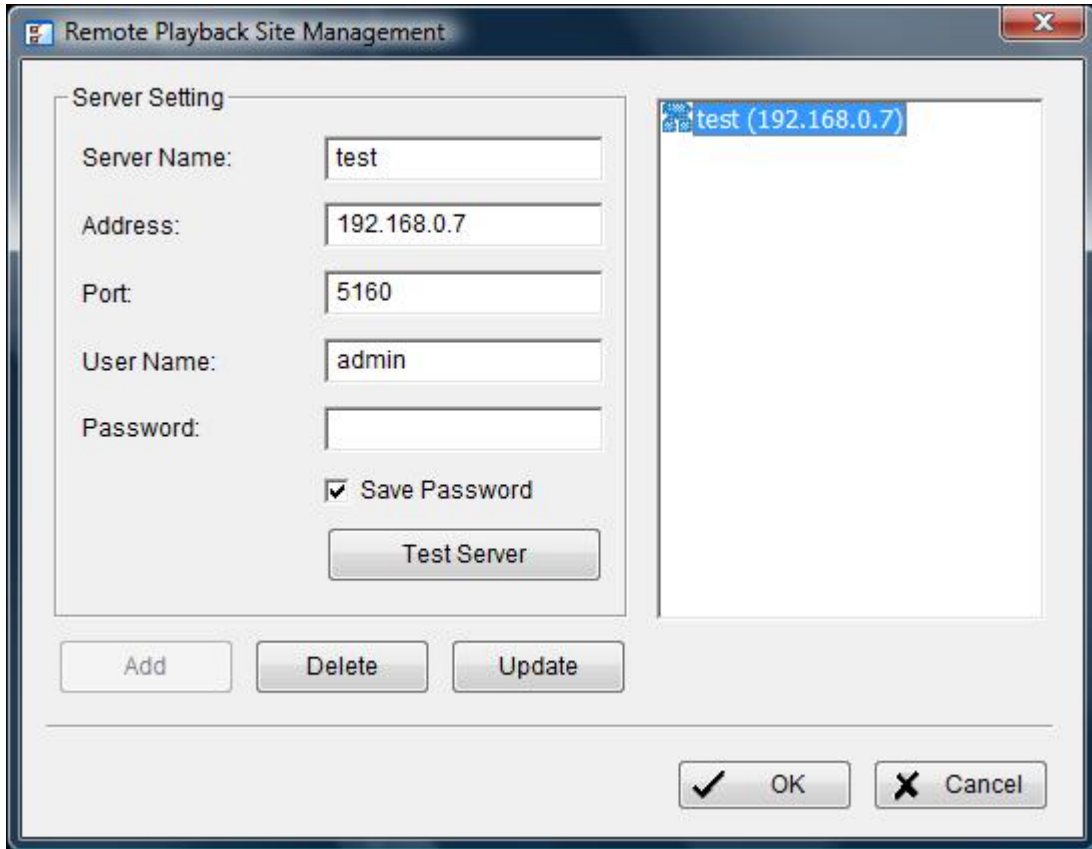
4. On the remote computer's Main console, click on [Playback].



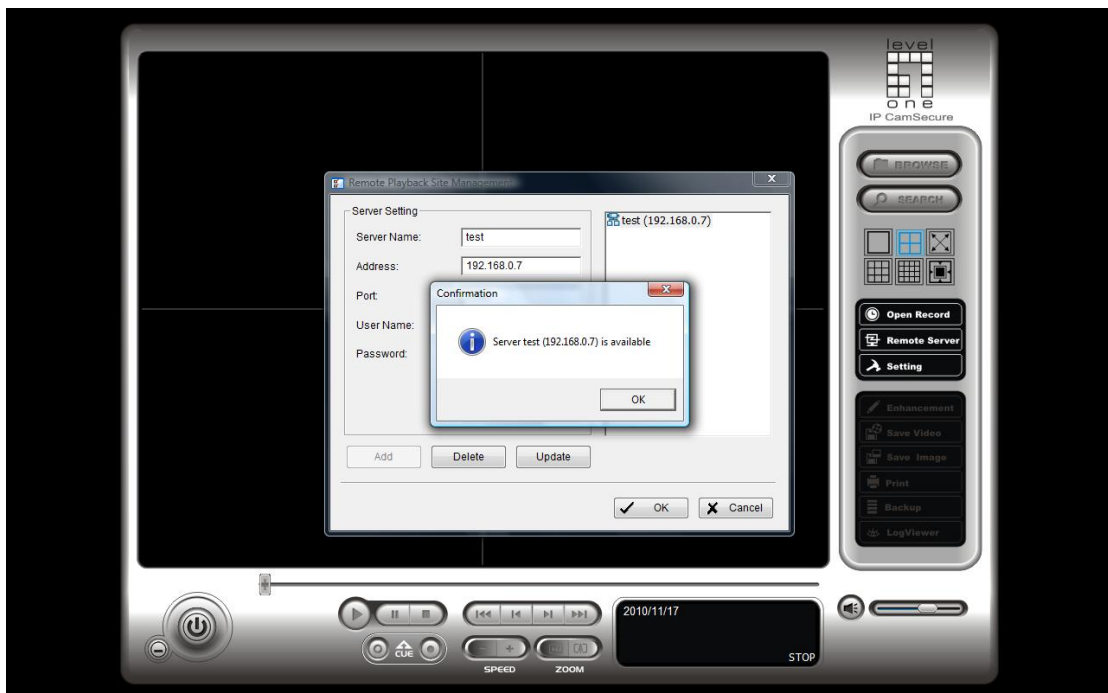
5. In the playback system, click on [Remote Server].



6. Please enter the remote server's IP address and login information. Here we use 192.168.0.7 as example.



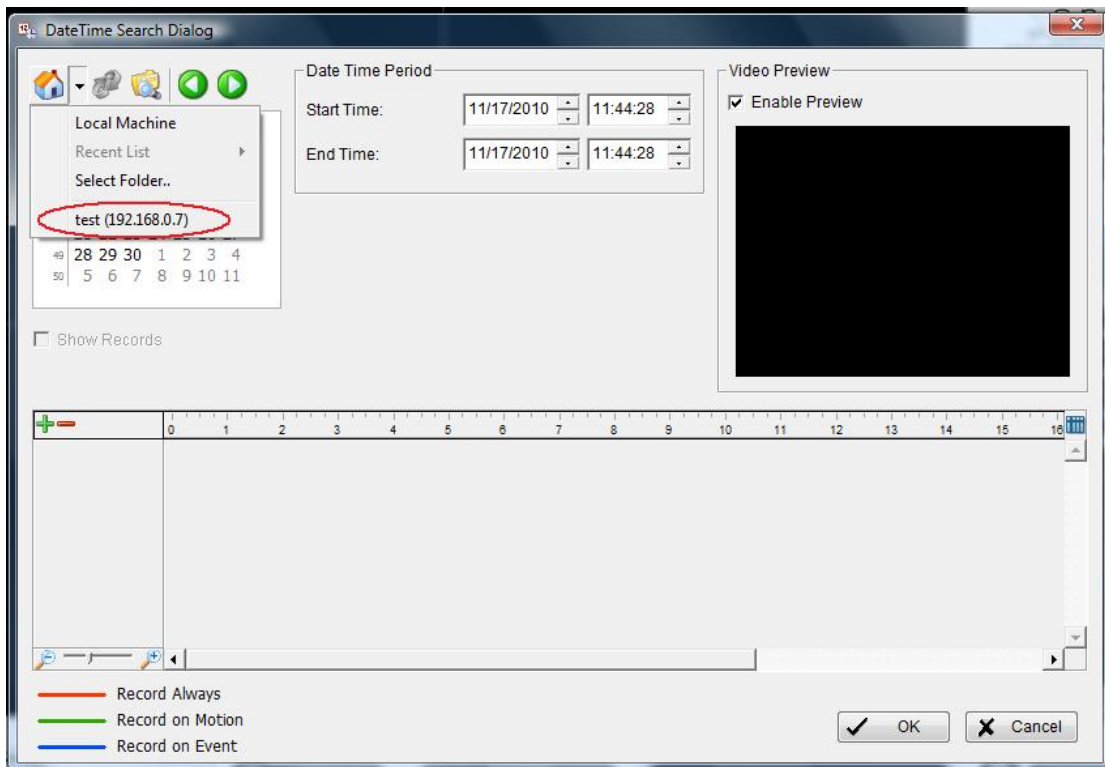
7. You can try the [Test server] button to verify the remote server. If you have remote playback configured properly as in “A” above. You should see as the snapshot below.



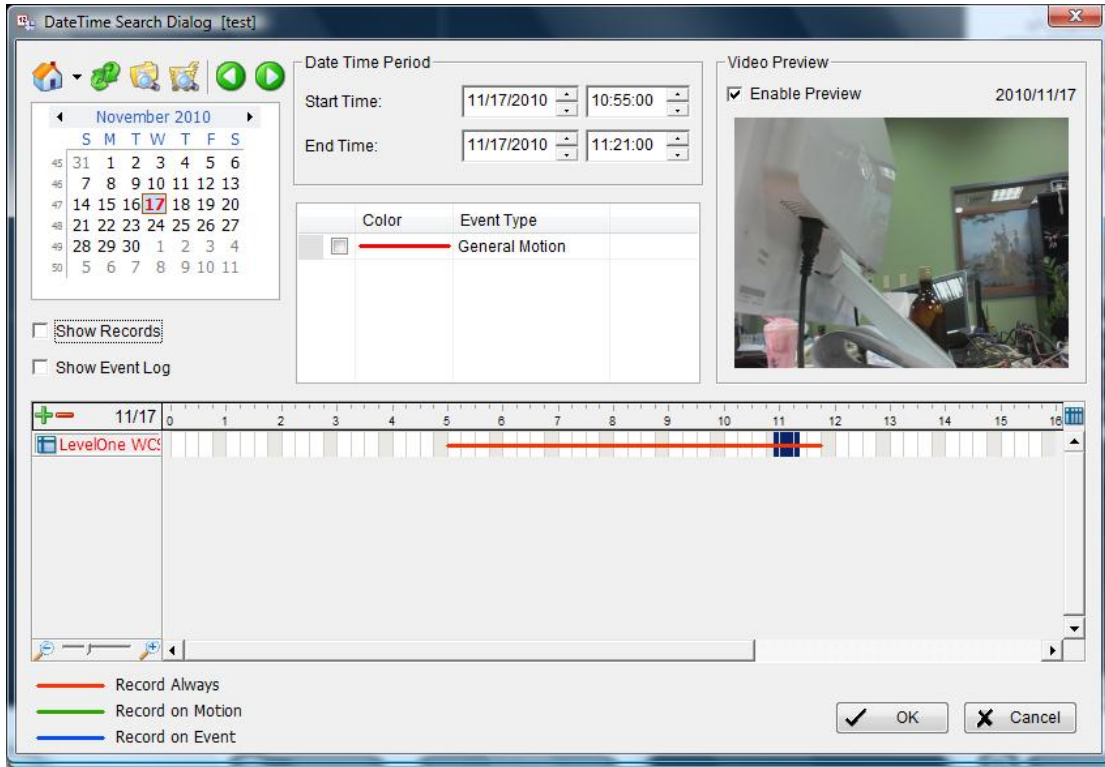
8. Click on [Open Record].



9. Please select the remote server as shown below.



10. Please select the period of time you would like to playback.



- Click on [OK], you should see the video footage being playback in playback system.

